

Slide 1

Slide notes: The Event Log report will list Pages that have been served to users. This is dependent on the Log being switched on at the Control settings.

IES Client v8.34 : My IES

Help Submit Quit Functions Commands

IES REPORTS AND QUERIES: - User Instructions

NAME: PORTAL EVENT LOGS

1: - CHOOSE VERSION [Versions](#)

Report Version: System Version: Web Apps Event Log

2: - CHOOSE SETTINGS

Format: report
OutPut: FILE
File Type: txt text file
Template: 04: Infolab
ReportHeader: Web Apps Event Log

3: - CHOOSE DATA SELECTOR [Change Selector](#)

Data Selector: vmplogs PORTAL PROCESSING LOGS

4: - TO e-MAIL THE RESULTS Priority: normal
 Despatch By E-Mail Mail Drive *

Mail To: Portal Event Logs
Mail Title: report by mail
Message Body: report by mail

5: - ADAPT DATA SELECTION (if prompts are present) [How to define MY CHOICE](#) [Restore Defaults](#)

Selection Tip	My Choice
1 Date >= ?	10/10/2011
2 Date <= ?	10/10/2011
3 Web Usercode = ?	[]

[Next](#) [Pre](#) [Add](#) [Ins](#) [Ed](#) [Del](#)

6: - Record Select:
 OPEN Records only
 CLOSED Records Only
 EITHER

7: - CHOOSE NEXT [Next](#)

Slide 2

Slide notes: We may select a date range of choice for the report.

IES Client v8.34 : My IES

Help Submit Quit Functions Commands

IES REPORTS AND QUERIES: - User Instructions

NAME: PORTAL EVENT LOGS

1: - CHOOSE VERSION [Versions](#)
 Report Version: System Version: Web Apps Event Log

2: - CHOOSE SETTINGS
 Format: report
 OutPut: FILE
 File Type: txt text file
 Template: 04: Infolab
 ReportHeader: Web Apps Event Log

3: - CHOOSE DATA SELECTOR [Change Selector](#)
 Data Selector: vmplogs PORTAL PROCESSING LOGS

4: - TO e-MAIL THE RESULTS Priority: normal
 Despatch By E-Mail Mail Drive *
 Mail To: Portal Event Logs
 Mail Title: report by mail
 Message Body: report by mail

5: - ADAPT DATA SELECTION (if prompts are present) [How to define MY CHOICE](#) [Restore Defaults](#)

Selection Tip	My Choice
1 Date >= ?	10/10/2011
2 Date <= ?	10/10/2011
3 Web Usercode = ?	[]

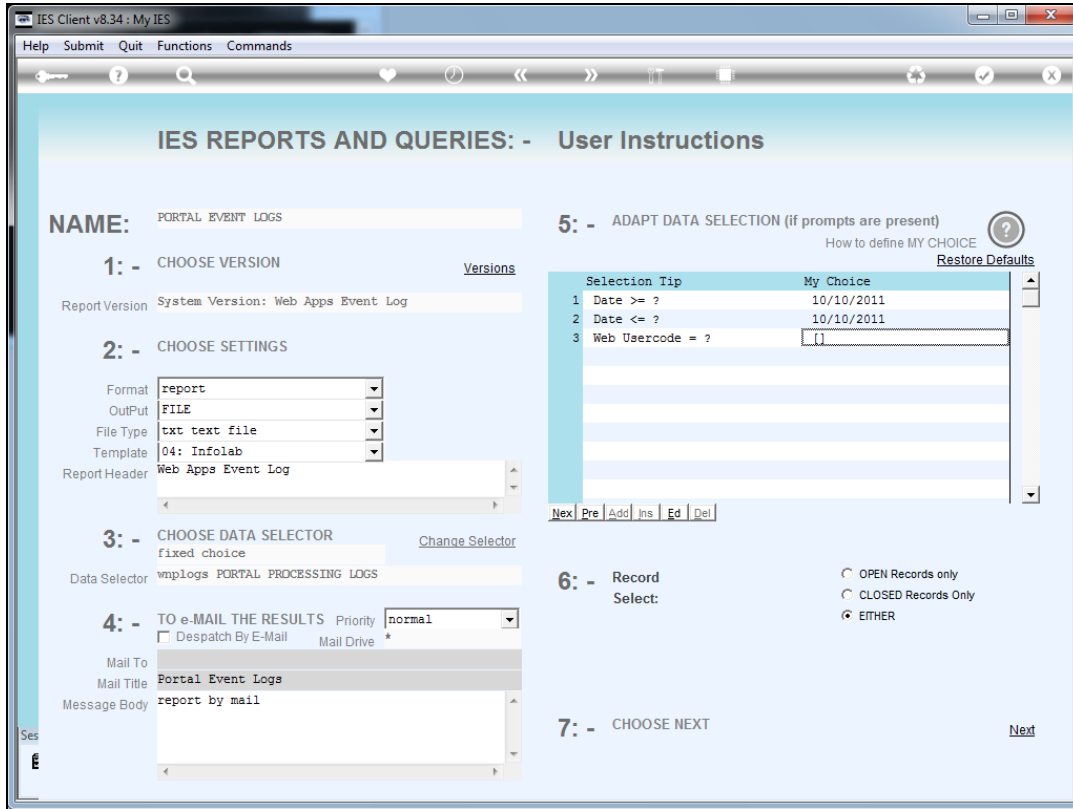
 Nex | Pre | Add | Ins | Ed | Del

6: - Record Select:
 OPEN Records only
 CLOSED Records Only
 EITHER

7: - CHOOSE NEXT [Next](#)

Slide 3

Slide notes: And we can also select a specific User if we wish.



Slide 4
Slide notes:

Q1598934739A - Notepad

File Edit Format View Help

Gummy Hoops Inc.

09:38:59 10 OCT 2011 page 1

Web Apps Event Log

Date On	Time On	Web	User	Page Key	Session Key	Datamart
10/10/2011	09:26	[*]		login	606bdd5eef2bd2bc282c0f1655be981dA	IESNET
10/10/2011	09:26	[*]		loginfail	606bdd5eef2bd2bc282c0f1655be981dA	INFOLAB
10/10/2011	09:26	[*]		loginfail	606bdd5eef2bd2bc282c0f1655be981dA	INFOLAB
10/10/2011	09:26	[*]		login	606bdd5eef2bd2bc282c0f1655be981dB	IESBUSINES
10/10/2011	09:28	[*]		login	606bdd5eef2bd2bc282c0f1655be981dC	IESBUSINES
10/10/2011	09:28	[*]		login	606bdd5eef2bd2bc282c0f1655be981dD	IESBUSINES
10/10/2011	09:28	[*]		loginfail	606bdd5eef2bd2bc282c0f1655be981dD	INFOLAB
10/10/2011	09:28	[*]		loginfail	606bdd5eef2bd2bc282c0f1655be981dD	INFOLAB
10/10/2011	09:28	[*]		login	606bdd5eef2bd2bc282c0f1655be981dE	IESBUSINES
10/10/2011	09:29	[*]		login	606bdd5eef2bd2bc282c0f1655be981dF	IESBUSINES
10/10/2011	09:29	[*]		loginfail	606bdd5eef2bd2bc282c0f1655be981dF	INFOLAB
10/10/2011	09:29	[*]		loginfail	606bdd5eef2bd2bc282c0f1655be981dF	INFOLAB
10/10/2011	09:29	[*]		loginblock	606bdd5eef2bd2bc282c0f1655be981dF	INFOLAB
10/10/2011	09:29	[*]		loginblock	606bdd5eef2bd2bc282c0f1655be981dF	INFOLAB
10/10/2011	09:29	[*]		login	606bdd5eef2bd2bc282c0f1655be981dG	INFOLAB
10/10/2011	09:29	[*]		loginfail	606bdd5eef2bd2bc282c0f1655be981dG	INFOLAB
10/10/2011	09:29	[*]		loginfail	606bdd5eef2bd2bc282c0f1655be981dG	INFOLAB
10/10/2011	09:28	[cindy]	Cindy Marlowe	noapps	606bdd5eef2bd2bc282c0f1655be981dB	IESBUSINES
10/10/2011	09:28	[cindy]	Cindy Marlowe	istate-sme-iesm	606bdd5eef2bd2bc282c0f1655be981dB	IESBUSINES
10/10/2011	09:28	[cindy]	Cindy Marlowe	logout	606bdd5eef2bd2bc282c0f1655be981dB	IESBUSINES
10/10/2011	09:30	[gor]	Gordon Roberts	iesmobile02	606bdd5eef2bd2bc282c0f1655be981dG	IESBUSINES
10/10/2011	09:30	[gor]	Gordon Roberts	iesmobile03	606bdd5eef2bd2bc282c0f1655be981dG	IESBUSINES
10/10/2011	09:30	[gor]	Gordon Roberts	iesmobile01	606bdd5eef2bd2bc282c0f1655be981dG	IESBUSINES
10/10/2011	09:30	[gor]	Gordon Roberts	logout	606bdd5eef2bd2bc282c0f1655be981dG	IESBUSINES
10/10/2011	09:26	[js]	John Smith	noapps	606bdd5eef2bd2bc282c0f1655be981dB	IESBUSINES
10/10/2011	09:27	[js]	John Smith	noapps	606bdd5eef2bd2bc282c0f1655be981dB	IESBUSINES
10/10/2011	09:27	[js]	John Smith	noapps	606bdd5eef2bd2bc282c0f1655be981dB	IESBUSINES
10/10/2011	09:28	[js]	John Smith	logout	606bdd5eef2bd2bc282c0f1655be981dB	IESBUSINES
10/10/2011	09:28	[js]	John Smith	noapps	606bdd5eef2bd2bc282c0f1655be981dC	IESBUSINES
10/10/2011	09:28	[js]	John Smith	logout	606bdd5eef2bd2bc282c0f1655be981dC	IESBUSINES
10/10/2011	09:29	[js]	John Smith	iesmobile02	606bdd5eef2bd2bc282c0f1655be981dE	IESBUSINES
10/10/2011	09:29	[js]	John Smith	iesmobile03	606bdd5eef2bd2bc282c0f1655be981dE	IESBUSINES
10/10/2011	09:29	[js]	John Smith	istate-sme-iesm	606bdd5eef2bd2bc282c0f1655be981dE	IESBUSINES
10/10/2011	09:29	[js]	John Smith	iesmobile01	606bdd5eef2bd2bc282c0f1655be981dE	IESBUSINES
10/10/2011	09:29	[js]	John Smith	logout	606bdd5eef2bd2bc282c0f1655be981dE	IESBUSINES

Slide 5

Slide notes: The Report includes failed attempts for unknown Users, as well as selected Users and Pages served to those Users in the selected date range.

Q1598934739A - Notepad

File Edit Format View Help

Gummy Hoops Inc.

09:38:59 10 OCT 2011 page 1

Web Apps Event Log

...Date On	Time On	Web	User.....	Page Key.....	Session Key.....	Datamart..
10/10/2011	09:26	[*]		login	606bdd5eef2bd2bc282c0f1655be981dA	IESNET
10/10/2011	09:26	[*]		loginfail	606bdd5eef2bd2bc282c0f1655be981dA	INFOLAB
10/10/2011	09:26	[*]		loginfail	606bdd5eef2bd2bc282c0f1655be981dA	INFOLAB
10/10/2011	09:26	[*]		login	606bdd5eef2bd2bc282c0f1655be981d8	IESBUSINES
10/10/2011	09:28	[*]		login	606bdd5eef2bd2bc282c0f1655be981dC	IESBUSINES
10/10/2011	09:28	[*]		login	606bdd5eef2bd2bc282c0f1655be981dD	IESBUSINES
10/10/2011	09:28	[*]		loginfail	606bdd5eef2bd2bc282c0f1655be981dD	INFOLAB
10/10/2011	09:28	[*]		loginfail	606bdd5eef2bd2bc282c0f1655be981dD	INFOLAB
10/10/2011	09:28	[*]		login	606bdd5eef2bd2bc282c0f1655be981dE	IESBUSINES
10/10/2011	09:29	[*]		login	606bdd5eef2bd2bc282c0f1655be981dF	IESBUSINES
10/10/2011	09:29	[*]		loginfail	606bdd5eef2bd2bc282c0f1655be981dF	INFOLAB
10/10/2011	09:29	[*]		loginfail	606bdd5eef2bd2bc282c0f1655be981dF	INFOLAB
10/10/2011	09:29	[*]		loginblock	606bdd5eef2bd2bc282c0f1655be981dF	INFOLAB
10/10/2011	09:29	[*]		loginblock	606bdd5eef2bd2bc282c0f1655be981dF	INFOLAB
10/10/2011	09:29	[*]		login	606bdd5eef2bd2bc282c0f1655be981dG	INFOLAB
10/10/2011	09:29	[*]		loginfail	606bdd5eef2bd2bc282c0f1655be981dG	INFOLAB
10/10/2011	09:29	[*]		loginfail	606bdd5eef2bd2bc282c0f1655be981dG	INFOLAB
10/10/2011	09:28	[cindy]	Cindy Marlowe	noapps	606bdd5eef2bd2bc282c0f1655be981dD	IESBUSINES
10/10/2011	09:28	[cindy]	Cindy Marlowe	!state-sme-iesm	606bdd5eef2bd2bc282c0f1655be981dD	IESBUSINES
10/10/2011	09:28	[cindy]	Cindy Marlowe	logout	606bdd5eef2bd2bc282c0f1655be981dD	IESBUSINES
10/10/2011	09:30	[gor]	Gordon Roberts	iesmobile02	606bdd5eef2bd2bc282c0f1655be981dG	IESBUSINES
10/10/2011	09:30	[gor]	Gordon Roberts	iesmobile03	606bdd5eef2bd2bc282c0f1655be981dG	IESBUSINES
10/10/2011	09:30	[gor]	Gordon Roberts	iesmobile01	606bdd5eef2bd2bc282c0f1655be981dG	IESBUSINES
10/10/2011	09:30	[gor]	Gordon Roberts	logout	606bdd5eef2bd2bc282c0f1655be981dG	IESBUSINES
10/10/2011	09:26	[js]	John Smith	noapps	606bdd5eef2bd2bc282c0f1655be981d8	IESBUSINES
10/10/2011	09:27	[js]	John Smith	noapps	606bdd5eef2bd2bc282c0f1655be981d8	IESBUSINES
10/10/2011	09:27	[js]	John Smith	noapps	606bdd5eef2bd2bc282c0f1655be981d8	IESBUSINES
10/10/2011	09:28	[js]	John Smith	logout	606bdd5eef2bd2bc282c0f1655be981d8	IESBUSINES
10/10/2011	09:28	[js]	John Smith	noapps	606bdd5eef2bd2bc282c0f1655be981dC	IESBUSINES
10/10/2011	09:28	[js]	John Smith	logout	606bdd5eef2bd2bc282c0f1655be981dC	IESBUSINES
10/10/2011	09:29	[js]	John Smith	iesmobile02	606bdd5eef2bd2bc282c0f1655be981dE	IESBUSINES
10/10/2011	09:29	[js]	John Smith	iesmobile03	606bdd5eef2bd2bc282c0f1655be981dE	IESBUSINES
10/10/2011	09:29	[js]	John Smith	!state-sme-iesm	606bdd5eef2bd2bc282c0f1655be981dE	IESBUSINES
10/10/2011	09:29	[js]	John Smith	iesmobile01	606bdd5eef2bd2bc282c0f1655be981dE	IESBUSINES
10/10/2011	09:29	[js]	John Smith	logout	606bdd5eef2bd2bc282c0f1655be981dE	IESBUSINES

Slide 6

Slide notes:

Q1598934739A - Notepad

File Edit Format View Help

Gummy Hoops Inc.

09:38:59 10 OCT 2011 page 1

Web Apps Event Log

Date On	Time On	Web User	Page Key	Session Key	Datamart
10/10/2011	09:26	[*]	login	606bdd5eef2bd2bc282c0f1655be981dA	IESNET
10/10/2011	09:26	[*]	loginfail	606bdd5eef2bd2bc282c0f1655be981dA	INFOLAB
10/10/2011	09:26	[*]	loginfail	606bdd5eef2bd2bc282c0f1655be981dA	INFOLAB
10/10/2011	09:26	[*]	login	606bdd5eef2bd2bc282c0f1655be981d8	IESBUSINES
10/10/2011	09:28	[*]	login	606bdd5eef2bd2bc282c0f1655be981dC	IESBUSINES
10/10/2011	09:28	[*]	login	606bdd5eef2bd2bc282c0f1655be981dD	IESBUSINES
10/10/2011	09:28	[*]	loginfail	606bdd5eef2bd2bc282c0f1655be981dD	INFOLAB
10/10/2011	09:28	[*]	loginfail	606bdd5eef2bd2bc282c0f1655be981dD	INFOLAB
10/10/2011	09:28	[*]	login	606bdd5eef2bd2bc282c0f1655be981dE	IESBUSINES
10/10/2011	09:29	[*]	login	606bdd5eef2bd2bc282c0f1655be981dF	IESBUSINES
10/10/2011	09:29	[*]	loginfail	606bdd5eef2bd2bc282c0f1655be981dF	INFOLAB
10/10/2011	09:29	[*]	loginfail	606bdd5eef2bd2bc282c0f1655be981dF	INFOLAB
10/10/2011	09:29	[*]	loginblock	606bdd5eef2bd2bc282c0f1655be981dF	INFOLAB
10/10/2011	09:29	[*]	loginblock	606bdd5eef2bd2bc282c0f1655be981dF	INFOLAB
10/10/2011	09:29	[*]	login	606bdd5eef2bd2bc282c0f1655be981dG	INFOLAB
10/10/2011	09:29	[*]	loginfail	606bdd5eef2bd2bc282c0f1655be981dG	INFOLAB
10/10/2011	09:29	[*]	loginfail	606bdd5eef2bd2bc282c0f1655be981dG	INFOLAB
10/10/2011	09:28	[cindy] Cindy Marlowe	noapps	606bdd5eef2bd2bc282c0f1655be981dD	IESBUSINES
10/10/2011	09:28	[cindy] Cindy Marlowe	istate-sme-iesm	606bdd5eef2bd2bc282c0f1655be981dD	IESBUSINES
10/10/2011	09:28	[cindy] Cindy Marlowe	logout	606bdd5eef2bd2bc282c0f1655be981dD	IESBUSINES
10/10/2011	09:30	[gor] Gordon Roberts	iesmobile02	606bdd5eef2bd2bc282c0f1655be981dG	IESBUSINES
10/10/2011	09:30	[gor] Gordon Roberts	iesmobile03	606bdd5eef2bd2bc282c0f1655be981dG	IESBUSINES
10/10/2011	09:30	[gor] Gordon Roberts	iesmobile01	606bdd5eef2bd2bc282c0f1655be981dG	IESBUSINES
10/10/2011	09:30	[gor] Gordon Roberts	logout	606bdd5eef2bd2bc282c0f1655be981dG	IESBUSINES
10/10/2011	09:26	[js] John Smith	noapps	606bdd5eef2bd2bc282c0f1655be981d8	IESBUSINES
10/10/2011	09:27	[js] John Smith	noapps	606bdd5eef2bd2bc282c0f1655be981d8	IESBUSINES
10/10/2011	09:27	[js] John Smith	noapps	606bdd5eef2bd2bc282c0f1655be981d8	IESBUSINES
10/10/2011	09:28	[js] John Smith	logout	606bdd5eef2bd2bc282c0f1655be981d8	IESBUSINES
10/10/2011	09:28	[js] John Smith	noapps	606bdd5eef2bd2bc282c0f1655be981dC	IESBUSINES
10/10/2011	09:28	[js] John Smith	logout	606bdd5eef2bd2bc282c0f1655be981dC	IESBUSINES
10/10/2011	09:29	[js] John Smith	iesmobile02	606bdd5eef2bd2bc282c0f1655be981dE	IESBUSINES
10/10/2011	09:29	[js] John Smith	iesmobile03	606bdd5eef2bd2bc282c0f1655be981dE	IESBUSINES
10/10/2011	09:29	[js] John Smith	istate-sme-iesm	606bdd5eef2bd2bc282c0f1655be981dE	IESBUSINES
10/10/2011	09:29	[js] John Smith	iesmobile01	606bdd5eef2bd2bc282c0f1655be981dE	IESBUSINES
10/10/2011	09:29	[js] John Smith	logout	606bdd5eef2bd2bc282c0f1655be981dE	IESBUSINES

Slide 7
Slide notes: