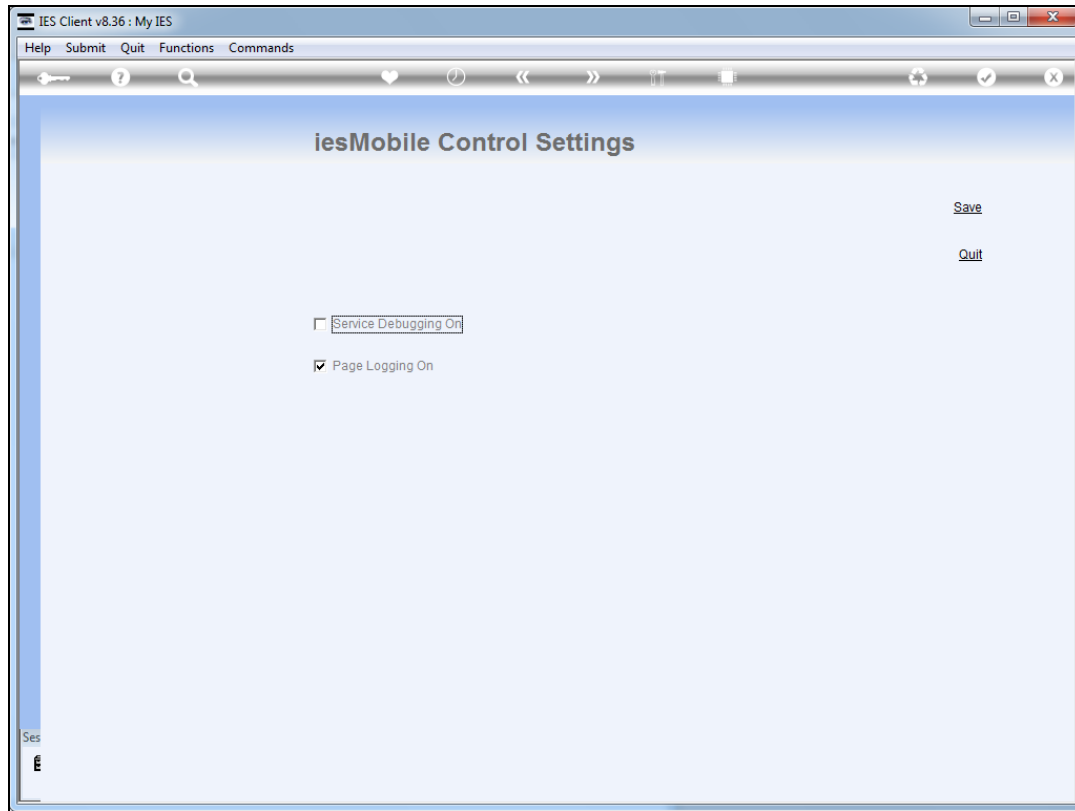


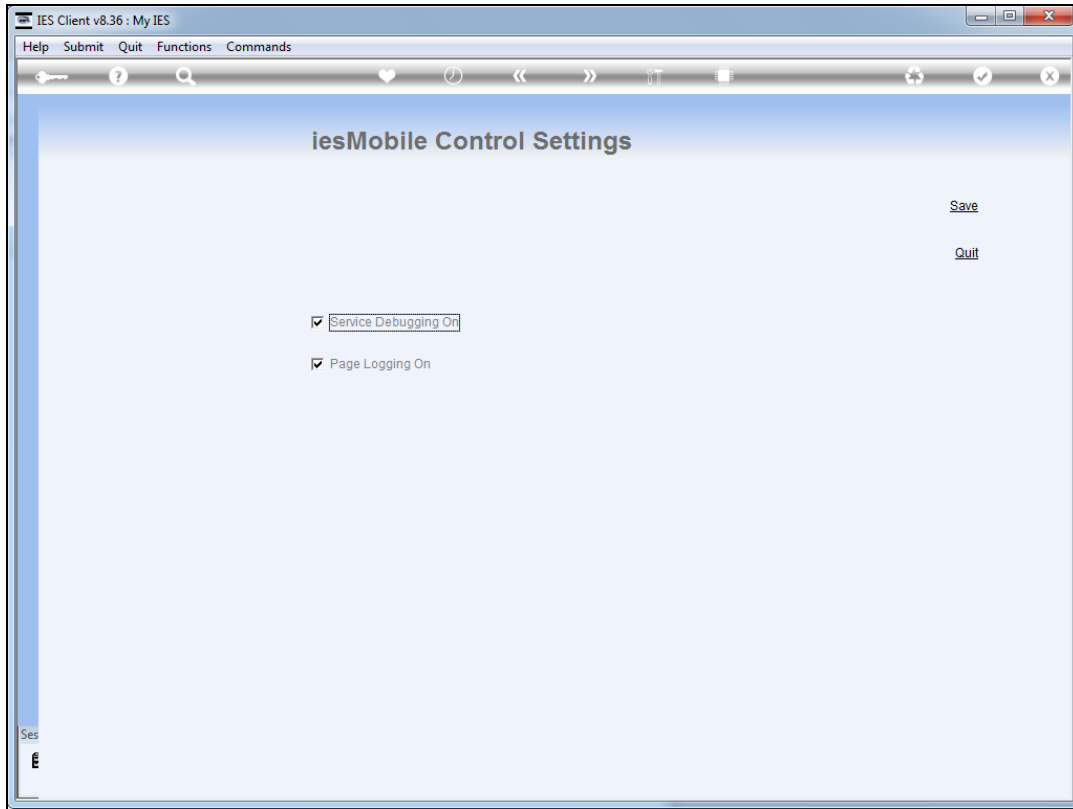
Slide 1

Slide notes: There are some internal control settings for iesMobile at the IES Server.

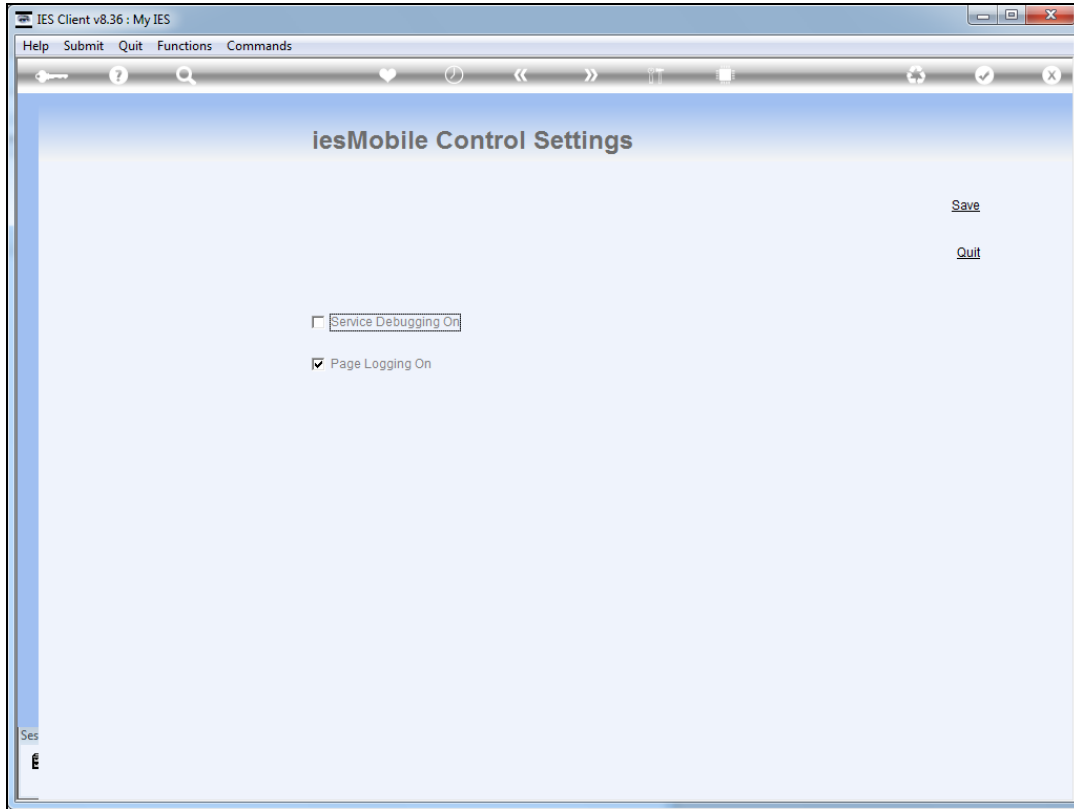


Slide 2

Slide notes: The first option is usually off, and provides command level debugging information for Developers when it is on, i.e. to debug when developing new work.

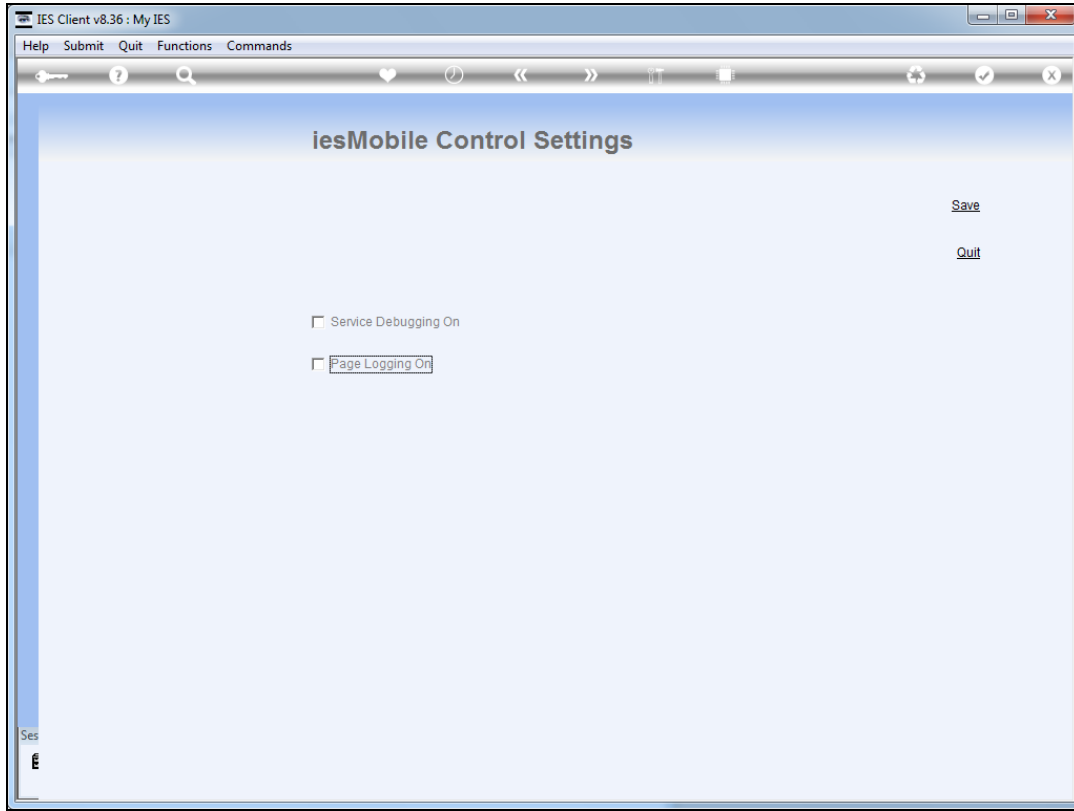


Slide 3
Slide notes:

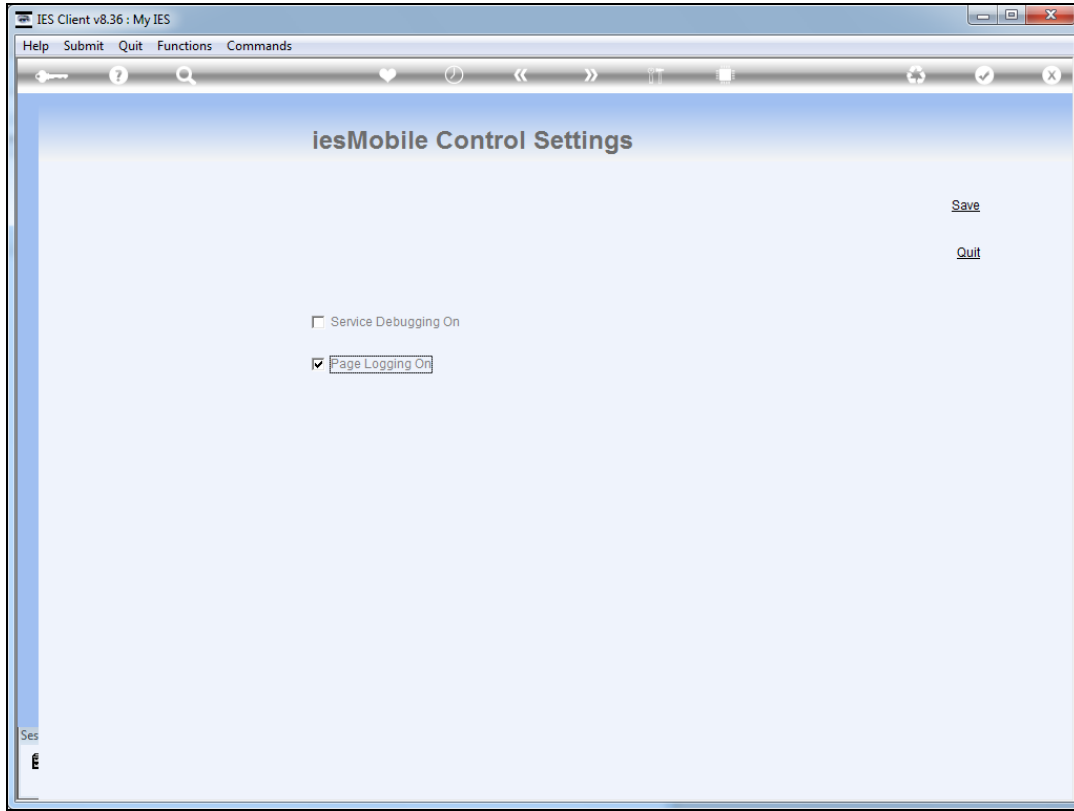


Slide 4

Slide notes: The 2nd option is usually on, and records detail of all Pages served to Users, in order that it may be reported on.



Slide 5
Slide notes:



Slide 6
Slide notes: