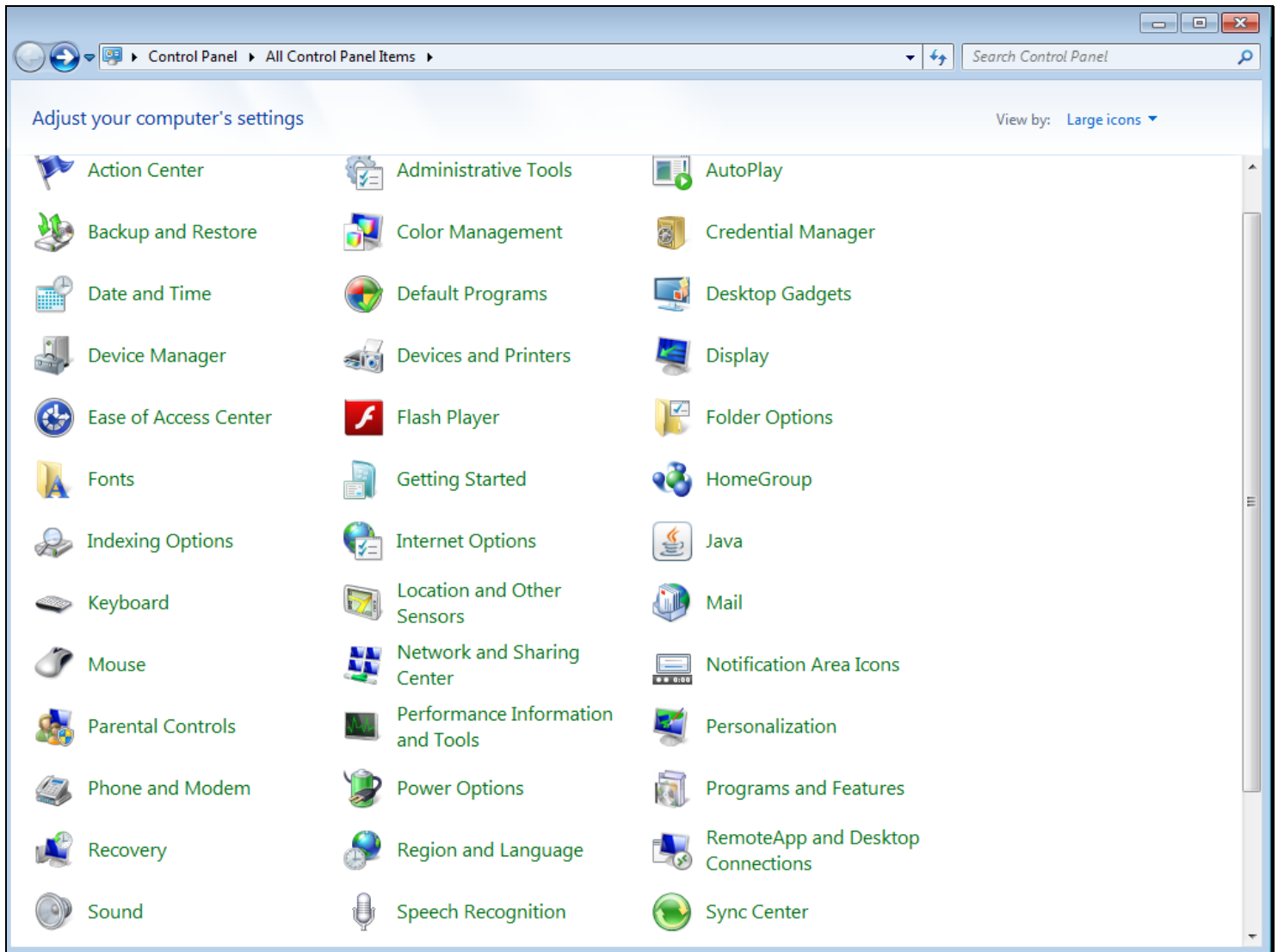


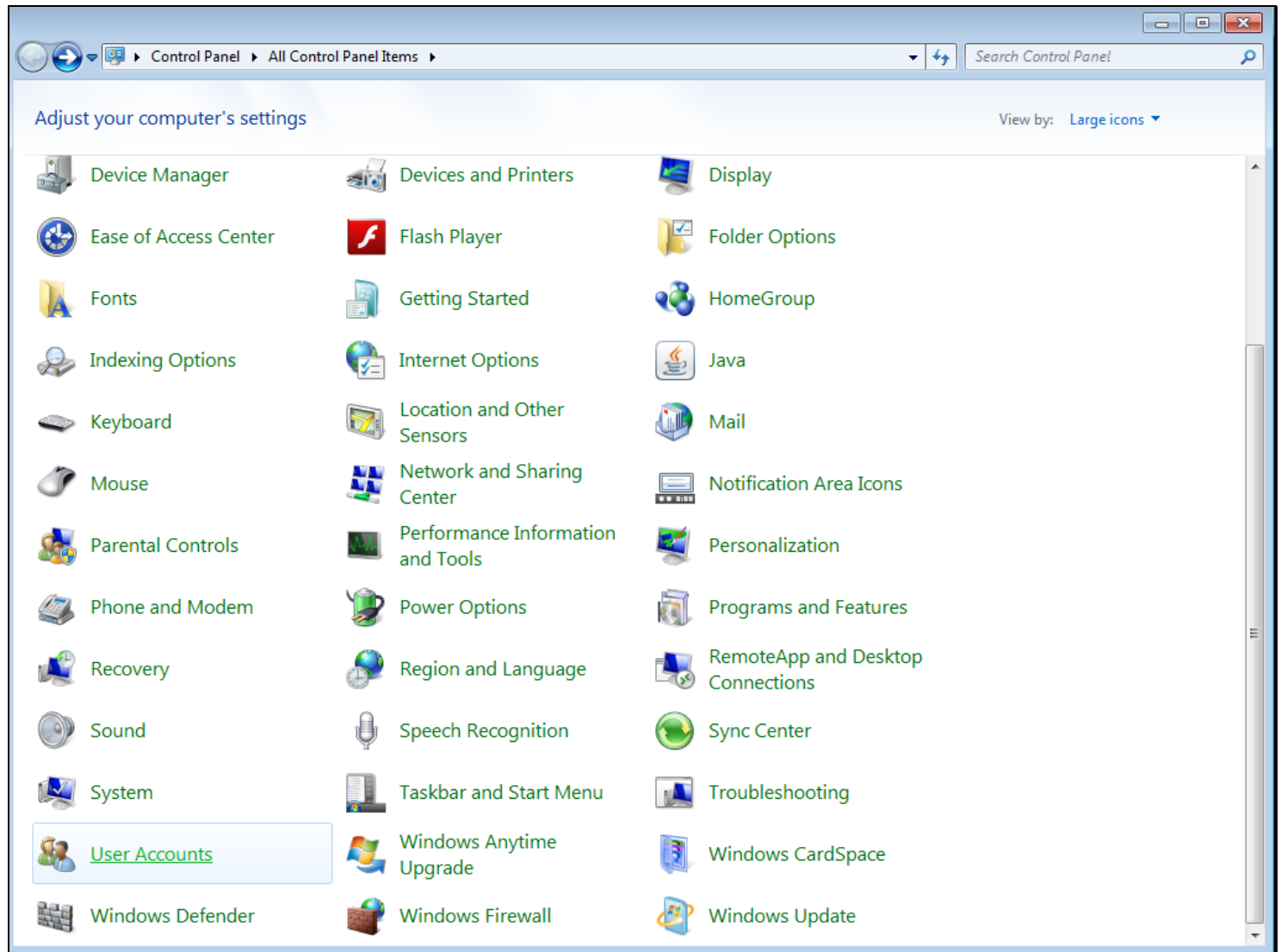
Slide 1 - Slide 1**Slide notes**

To ensure that the User logons and User access to shared folders work well, it is recommended to turn down the User Access Control on the Windows Server.

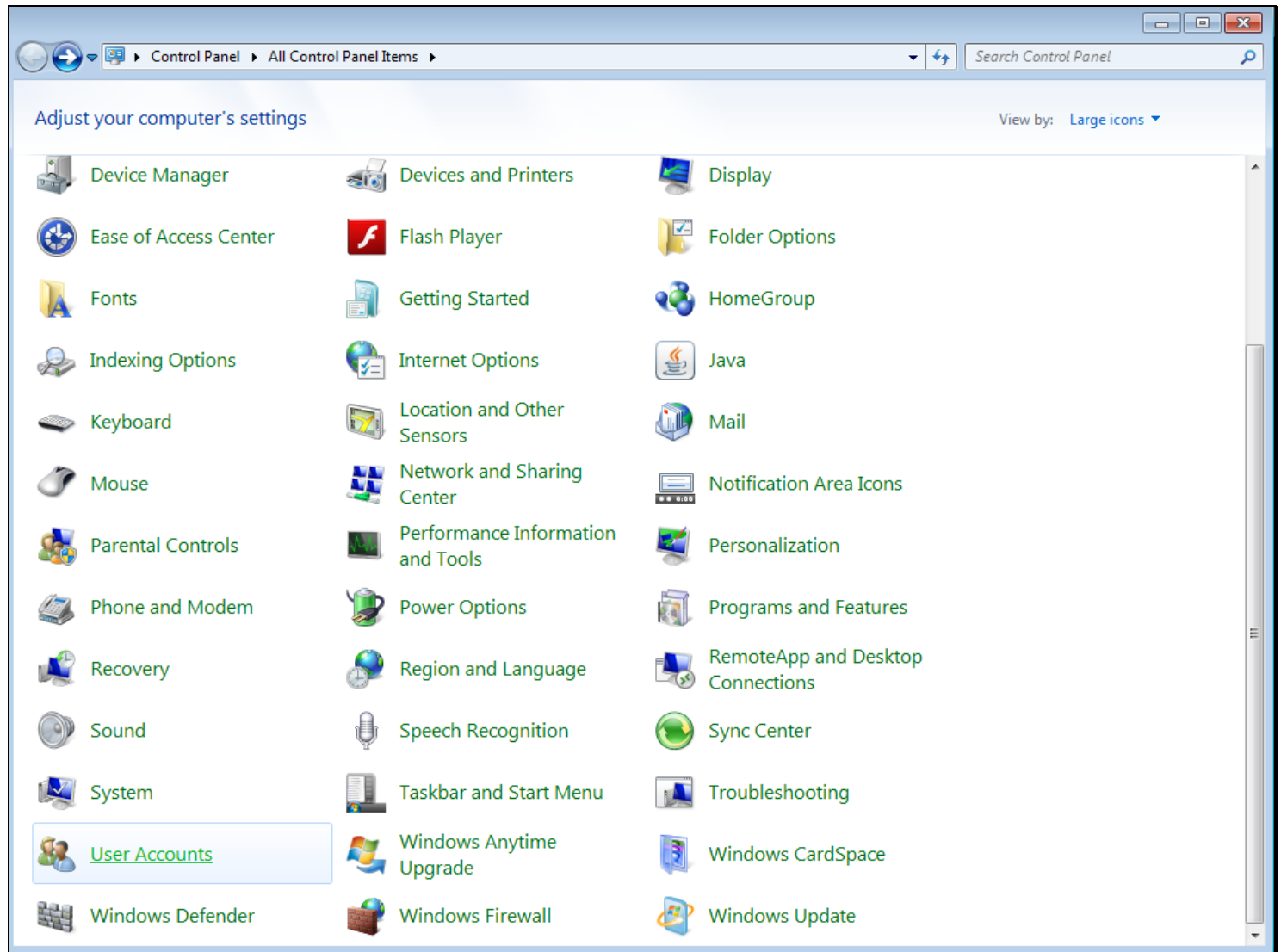
Slide 2 - Slide 2



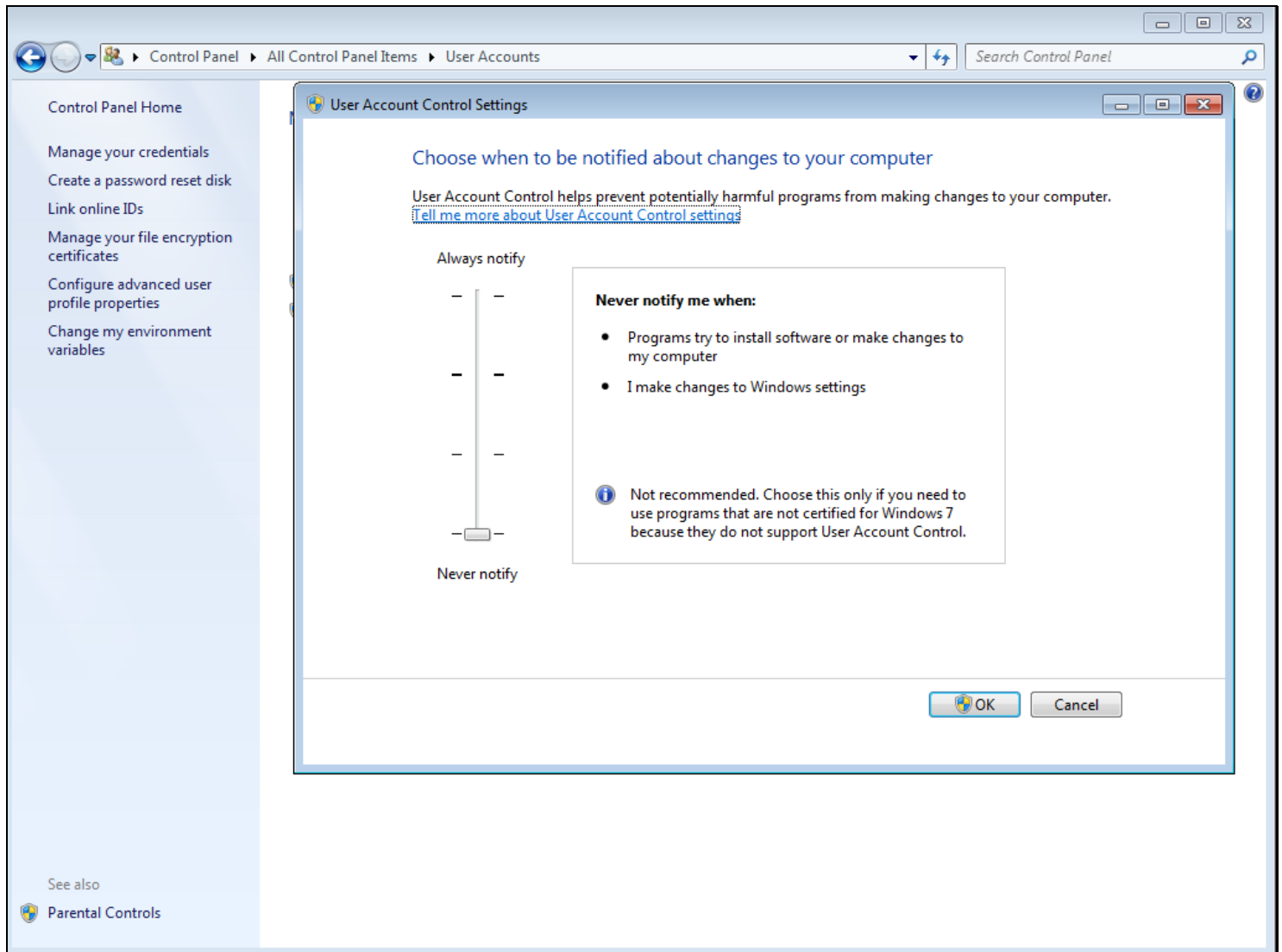
Slide notes

Slide 3 - Slide 3**Slide notes**

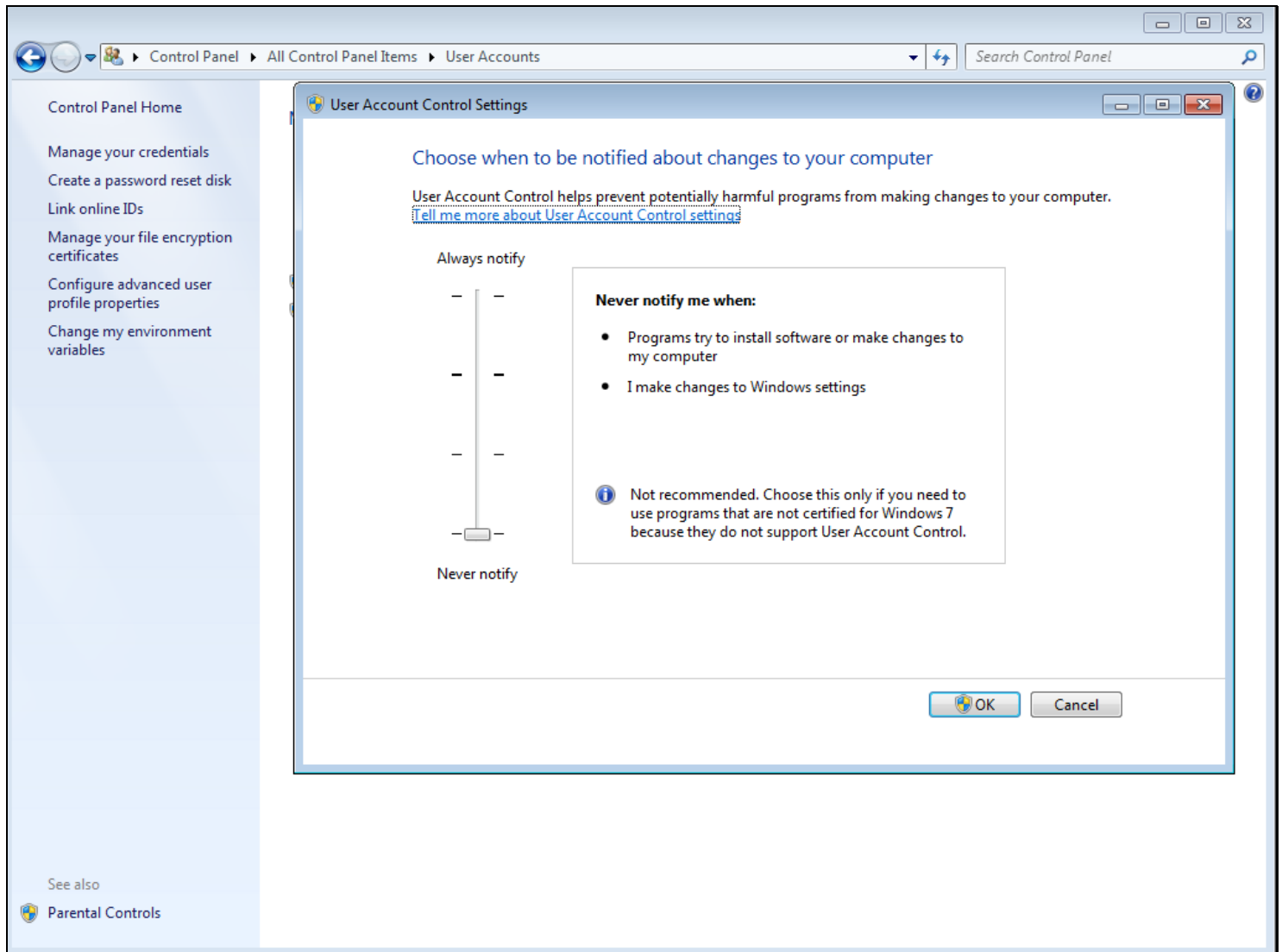
On this version of Windows, we can find it at User Accounts.

Slide 4 - Slide 4**Slide notes**

Slide 5 - Slide 5

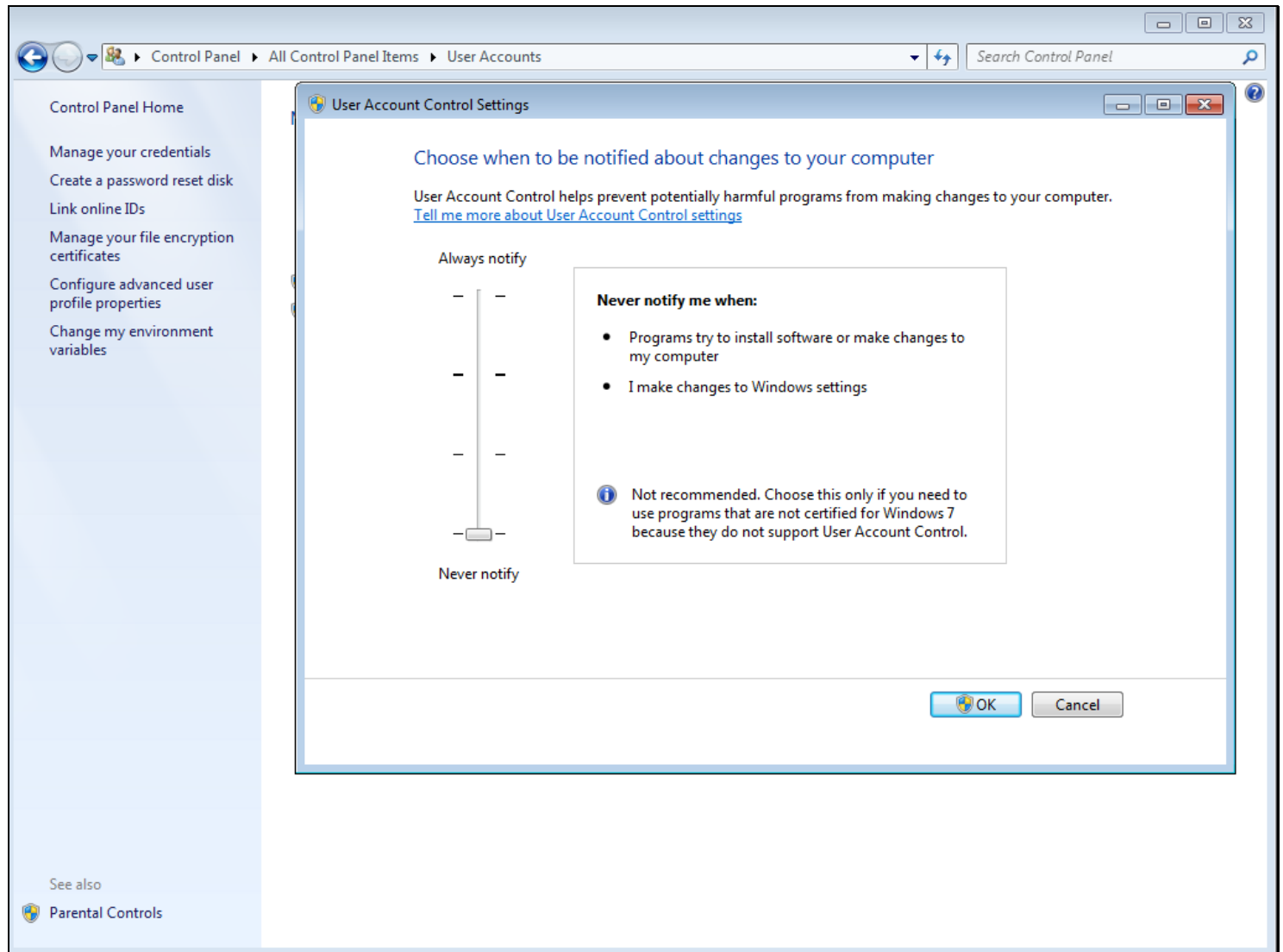


Slide notes

Slide 6 - Slide 6**Slide notes**

Just turn down the UAC.

Slide 7 - Slide 7



Slide notes