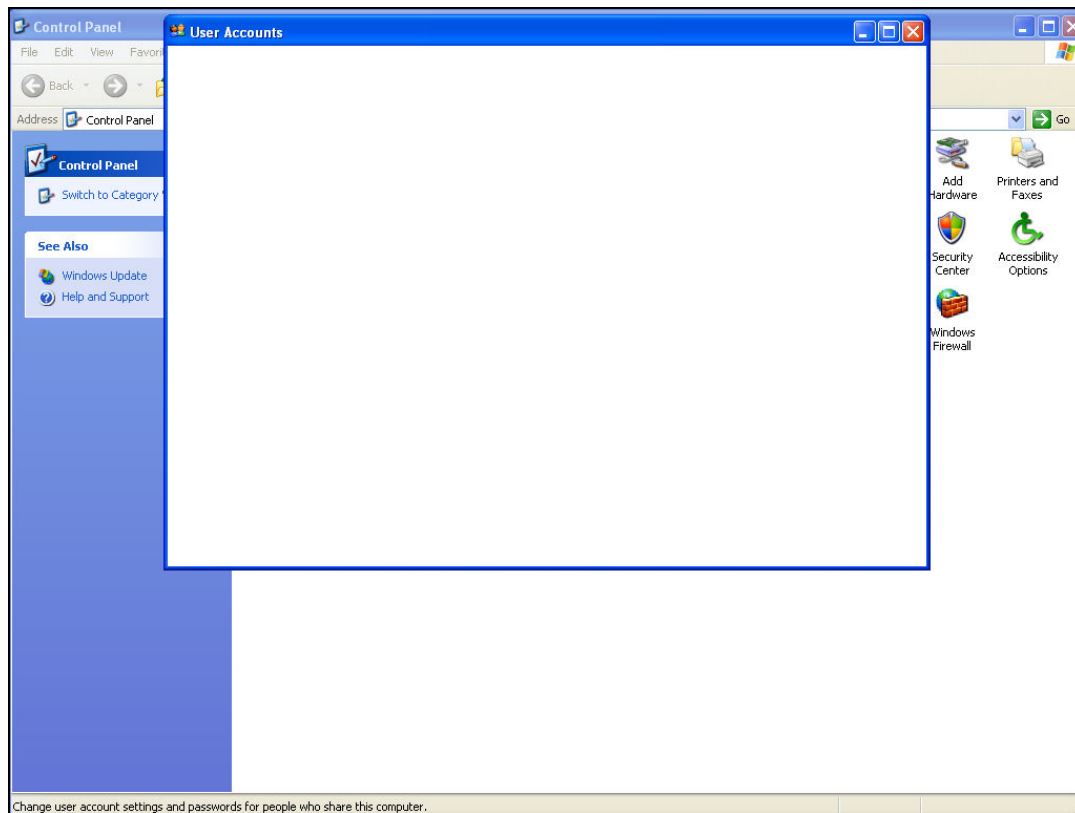


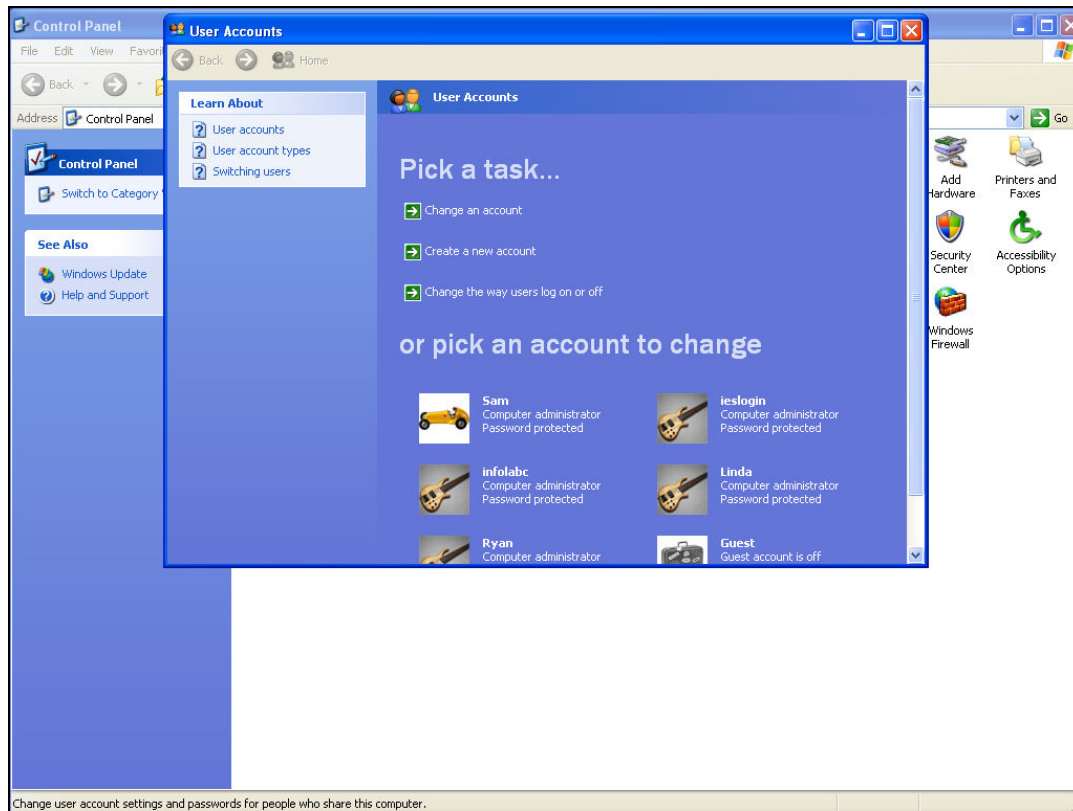
## Slide 1

Slide notes: When we choose to use the more secure login option with domain User "ieslogin", then we may remove the domain user "infolabc".



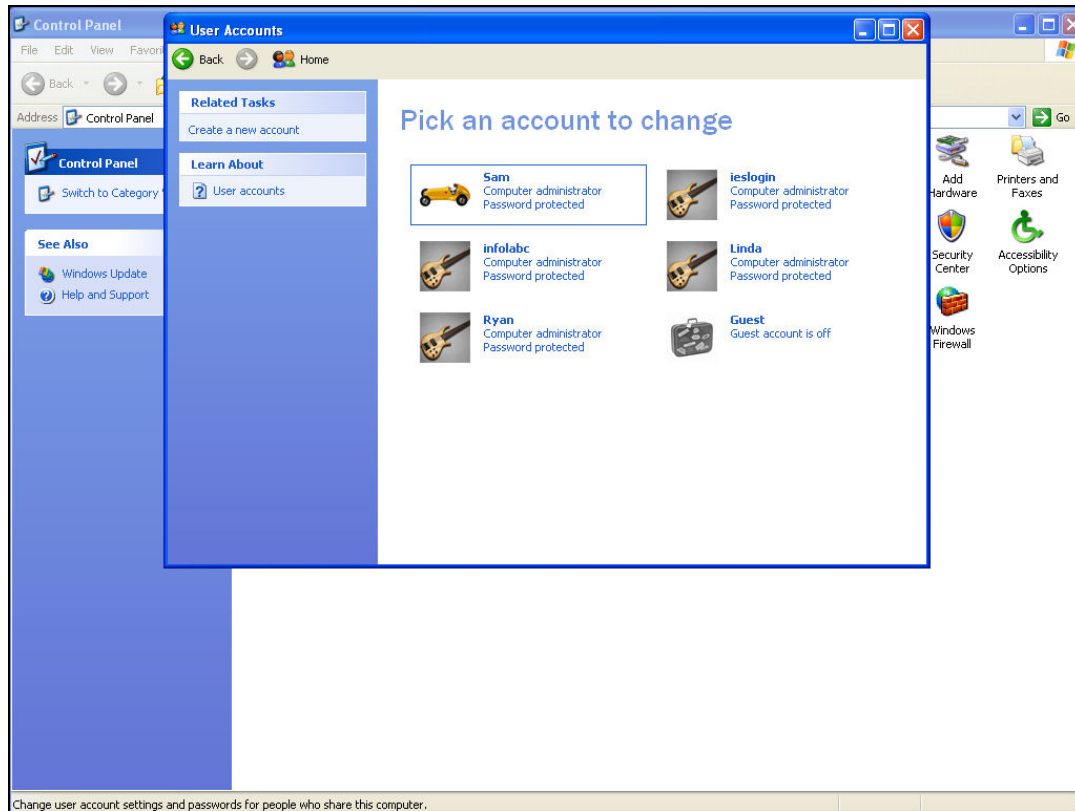
Slide 2

Slide notes:



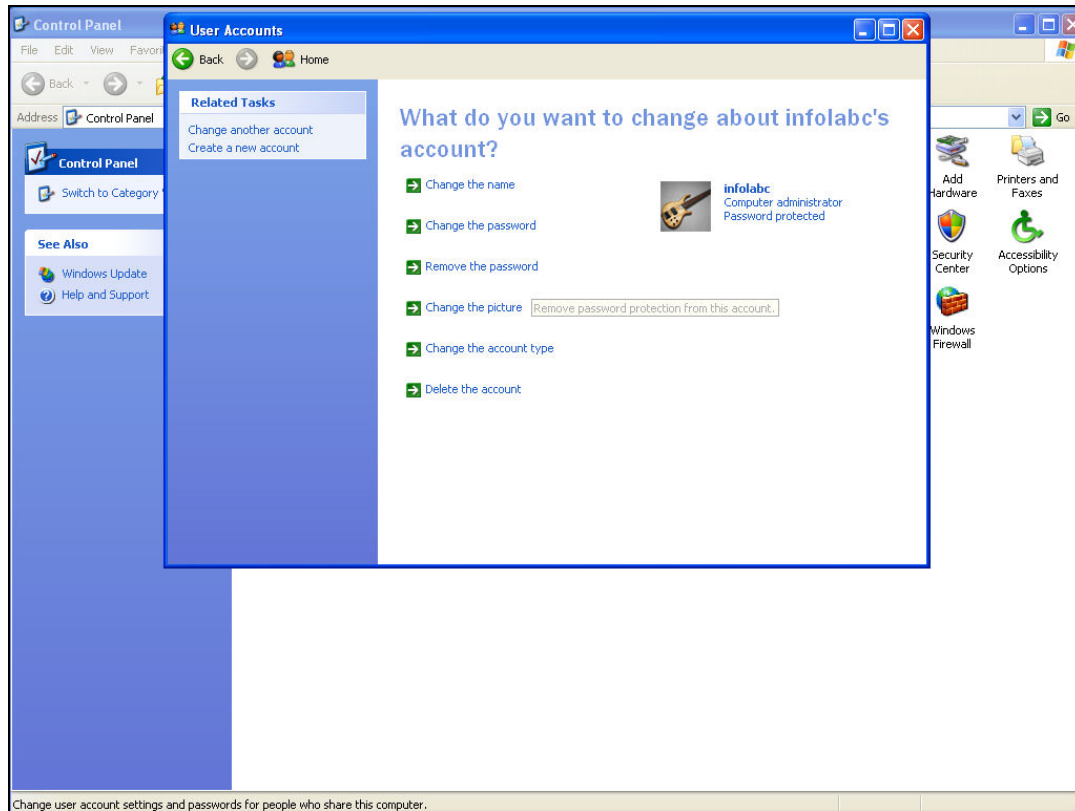
Slide 3

Slide notes: At User Accounts, we choose and remove user "infolabc".



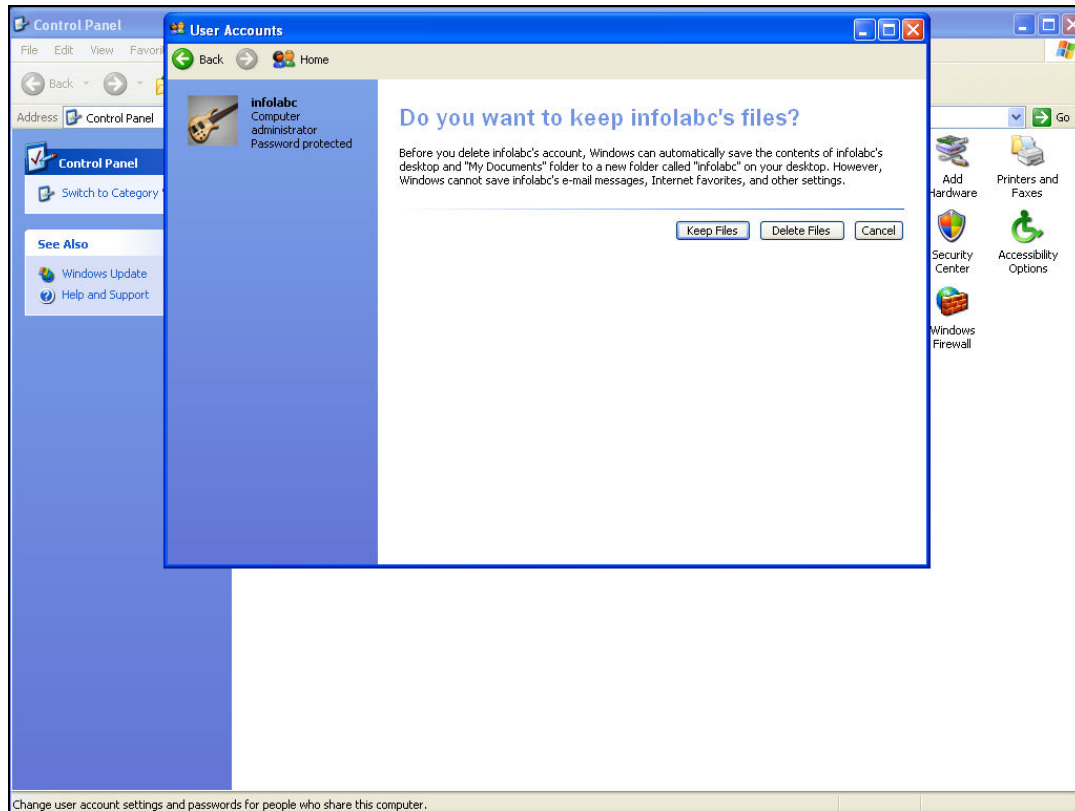
Slide 4

Slide notes:



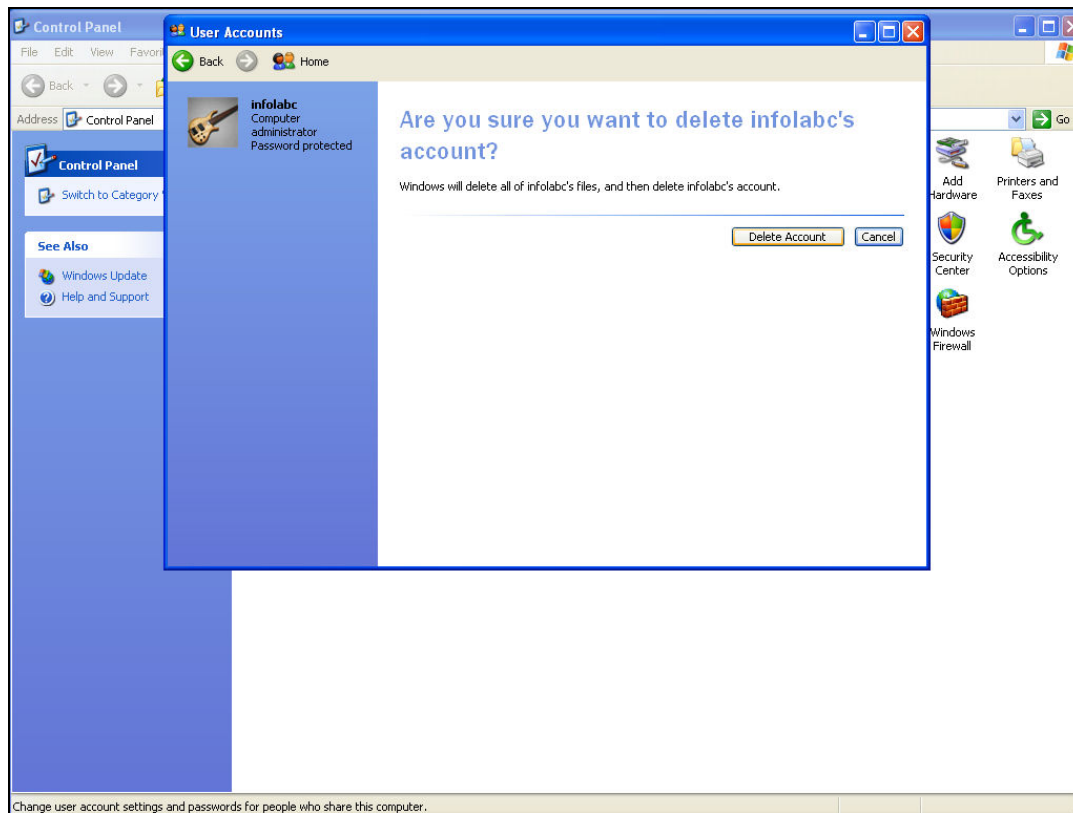
Slide 5

Slide notes:



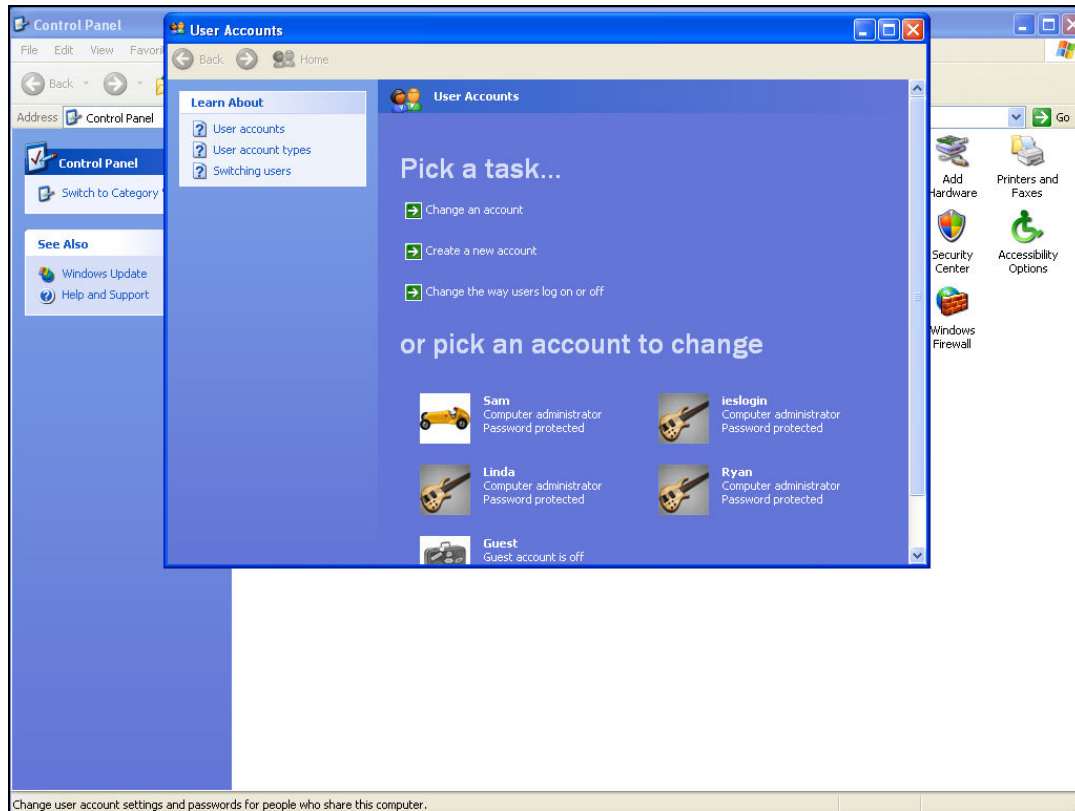
Slide 6

Slide notes:



Slide 7

Slide notes:



## Slide 8

Slide notes: Now there is no domain user "infolabc", and secure login is performed with user "ieslogin", for which the password is not generally known.