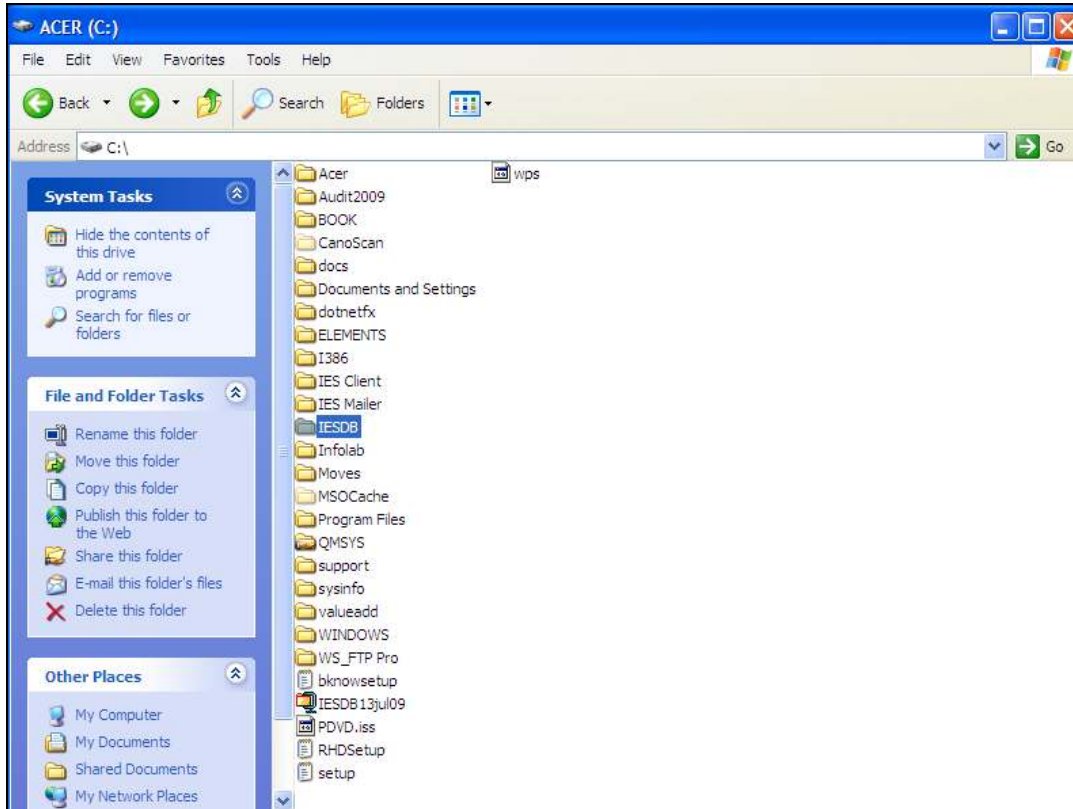
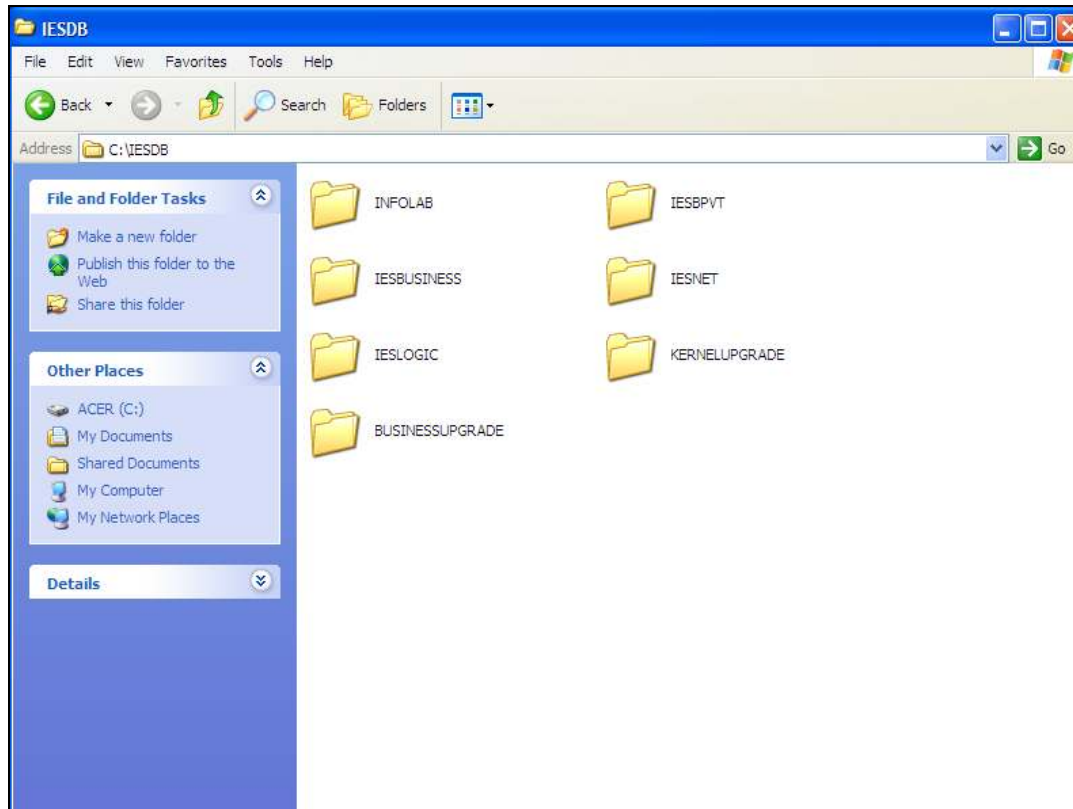


## Slide 1

Slide notes: After an upgrade, we may remove the KERNELUPGRADE and BUSINESSUPGRADE data from the Database.

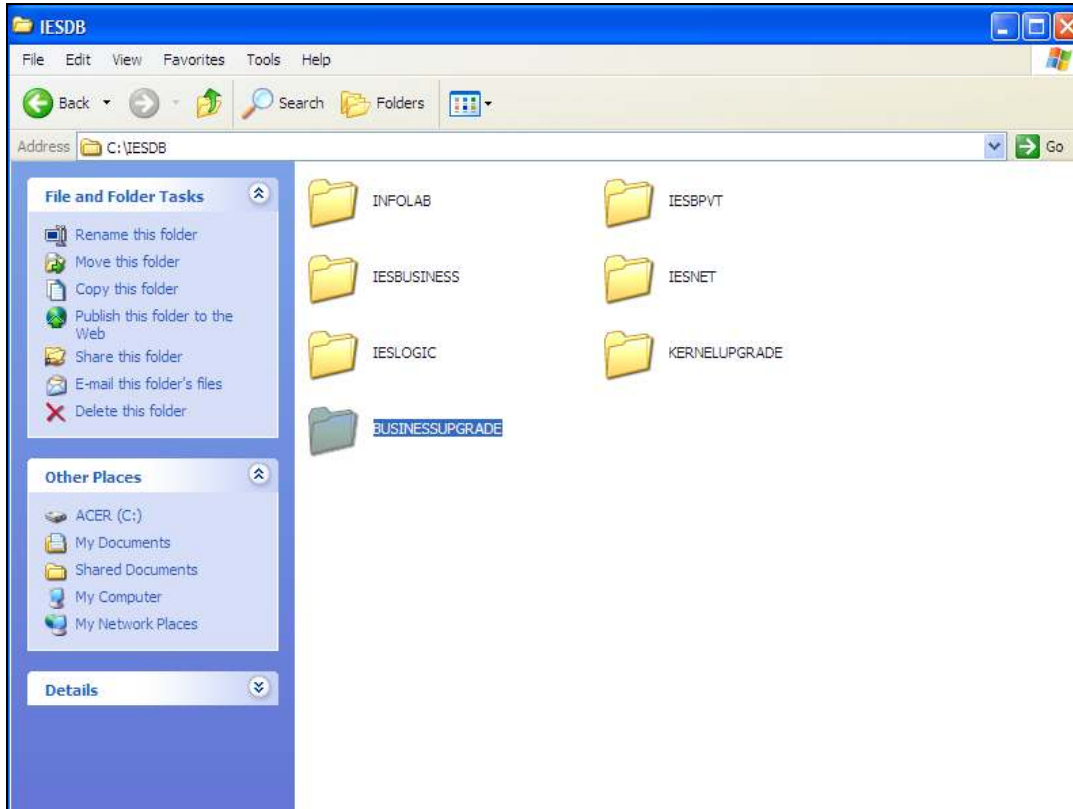


Slide 2  
Slide notes:



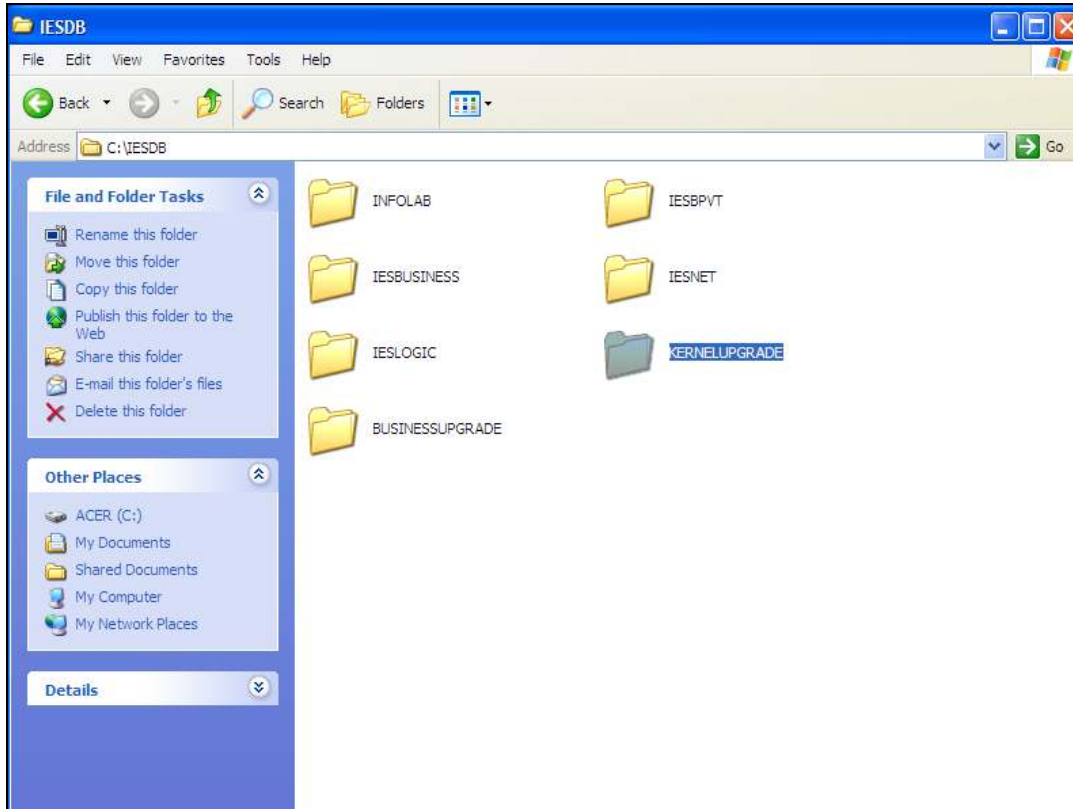
### Slide 3

Slide notes: If the Upgrade Datamarts remain in the IESDB folder, then they will be part of the daily backup, and increase the size of the backup. It is not necessary to keep these Datamarts, because they can be created at any time from the IESPACK if we should need them again. So they can just be deleted here, but there is no need to de-register them in QMSYS or IES.



Slide 4

Slide notes:



Slide 5  
Slide notes: