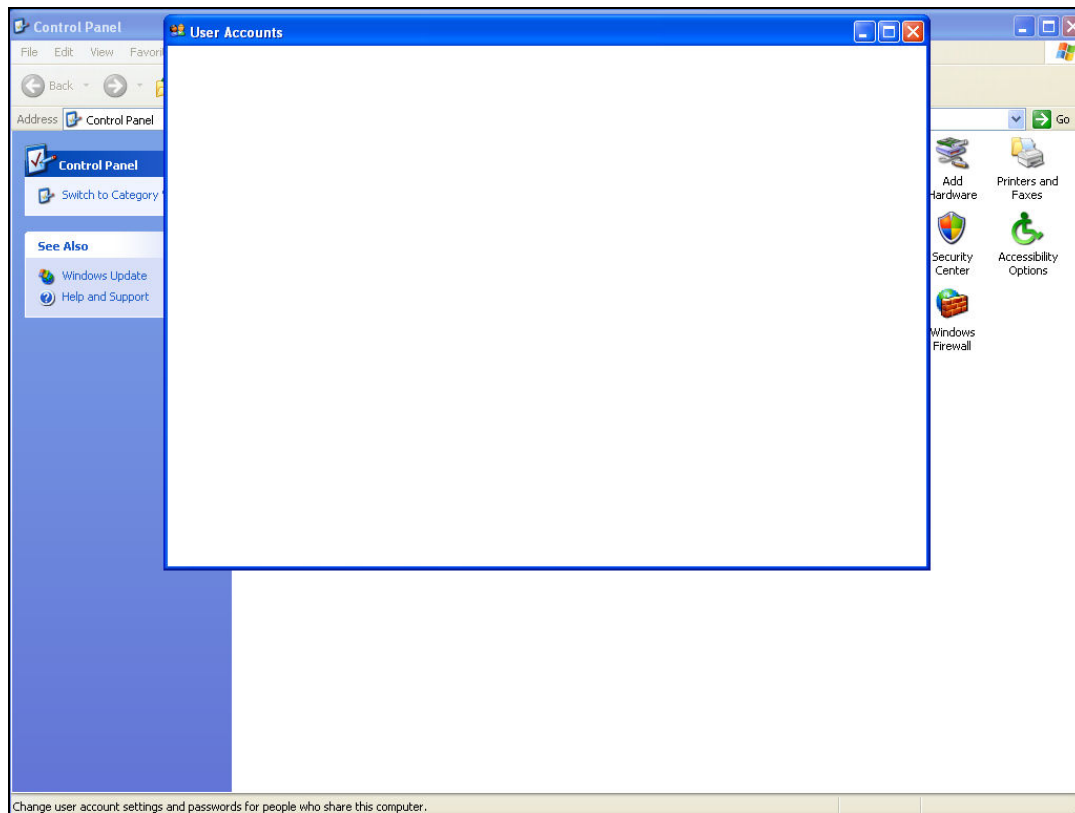




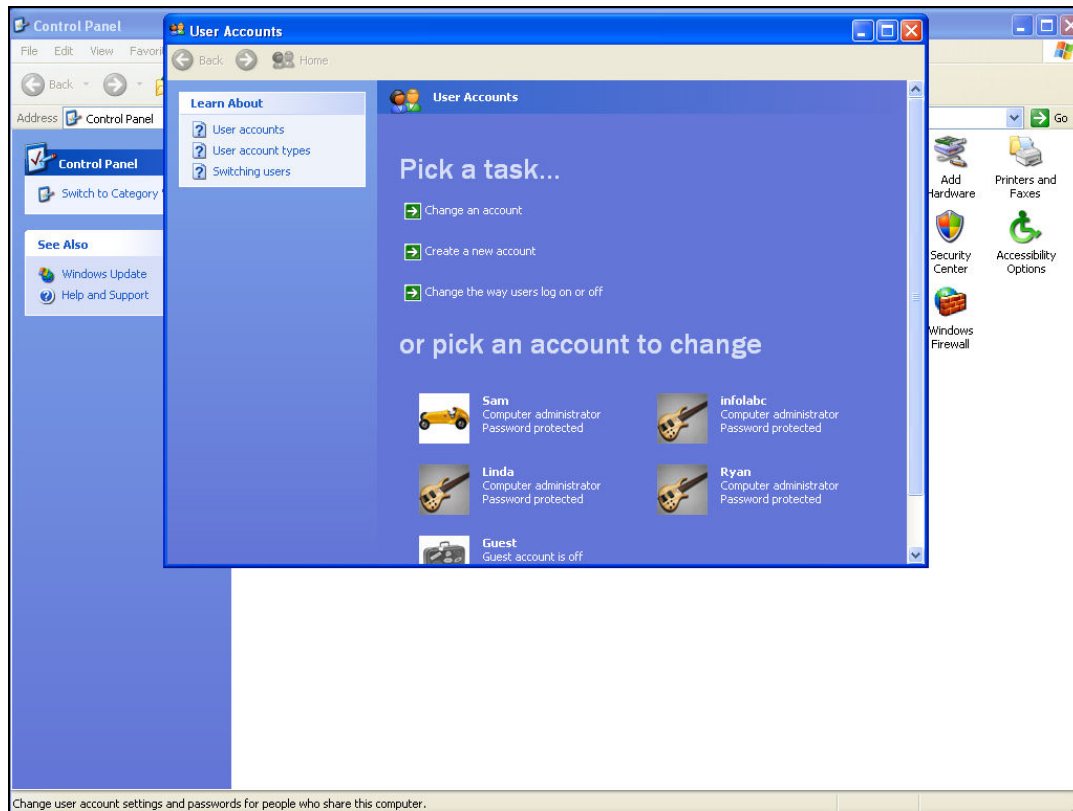
Slide 1

Slide notes: When we choose the more secure login option, we need to make a domain user called "ieslogin". It is essential that this User Code is created on the Server where the QM database is installed. Even if 'active directory' is used for authentication, we must ensure to make the User Account on the QM Server machine, and nowhere else.



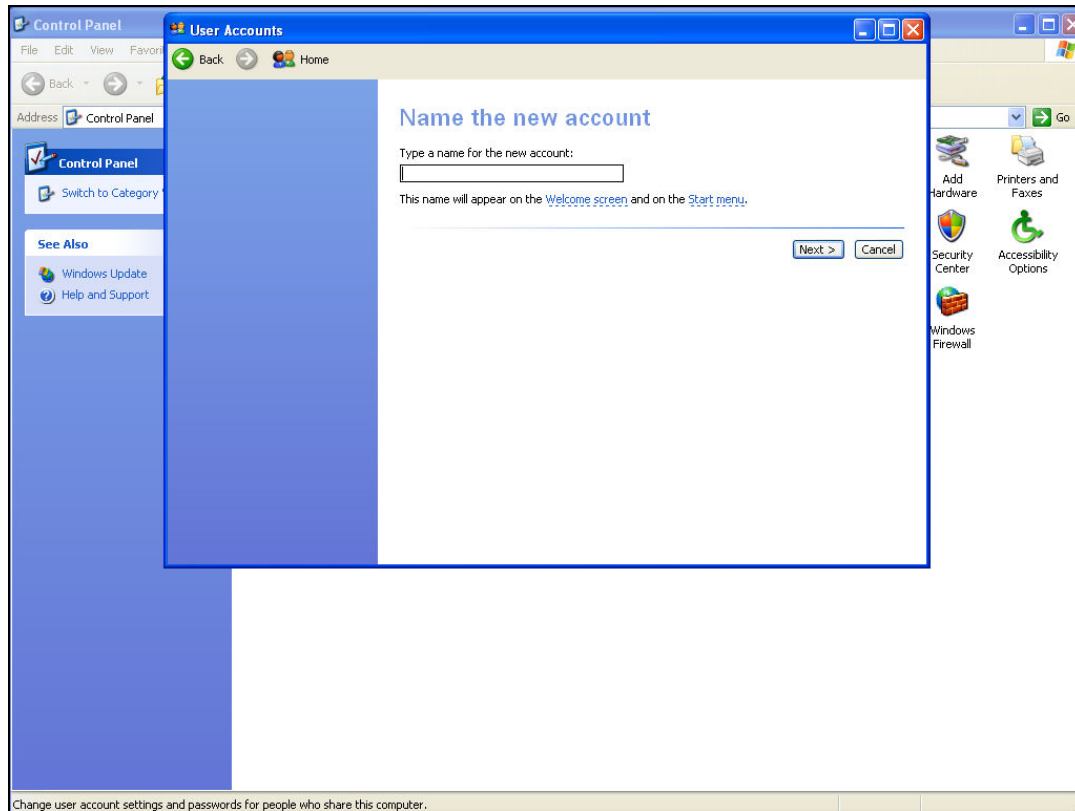
Slide 2

Slide notes:



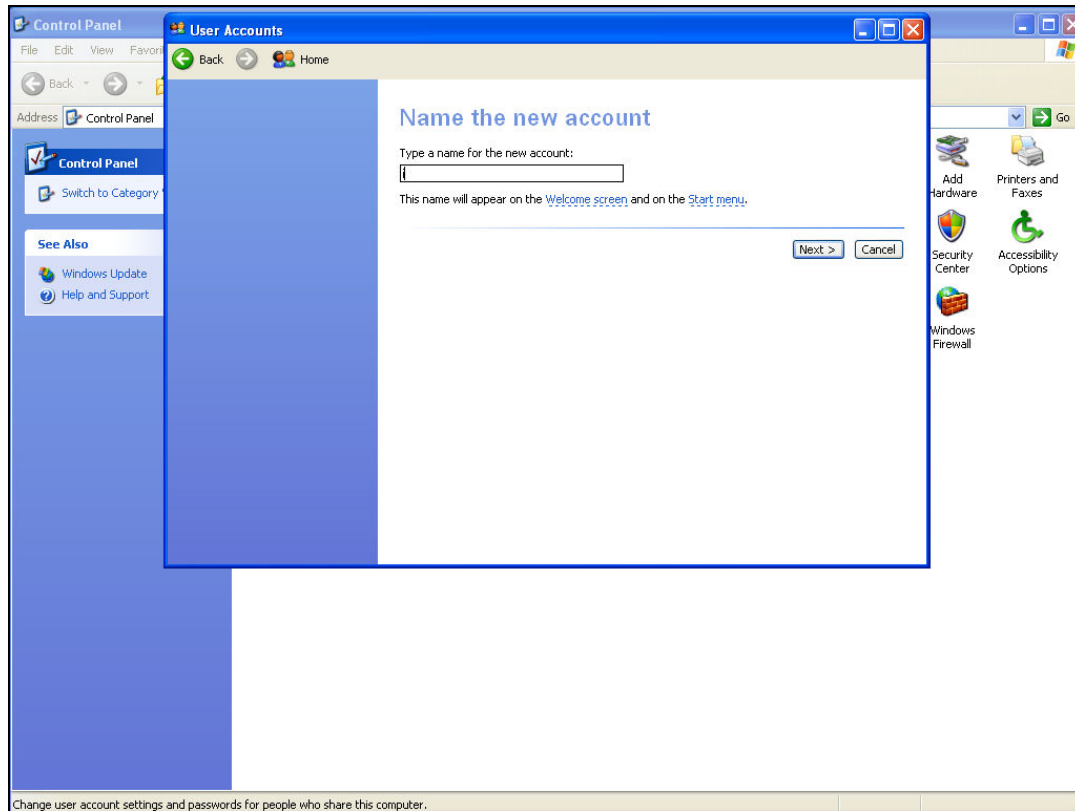
Slide 3

Slide notes:



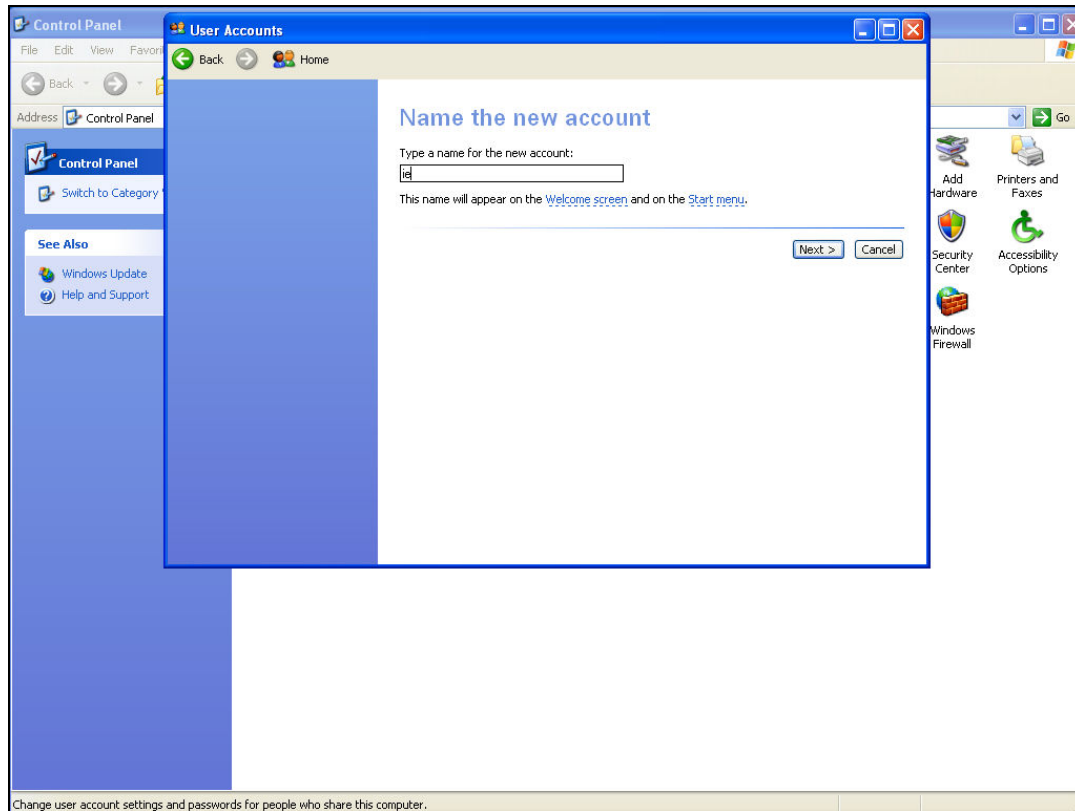
Slide 4

Slide notes:



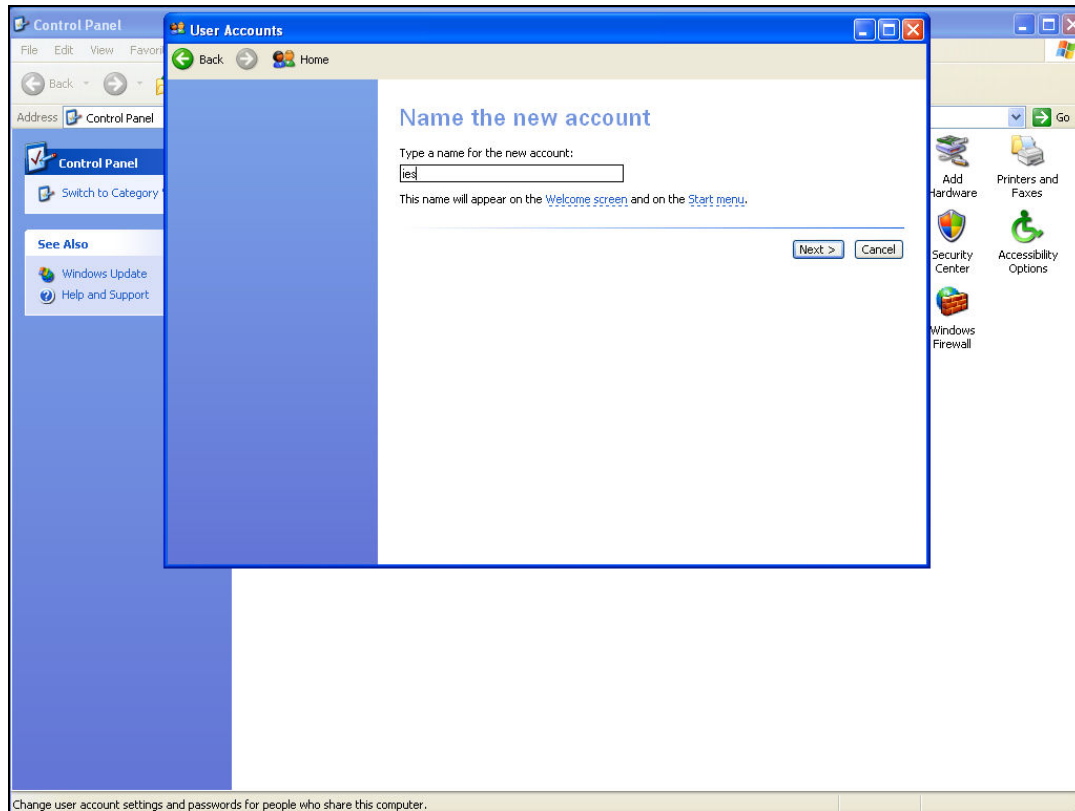
Slide 5

Slide notes:



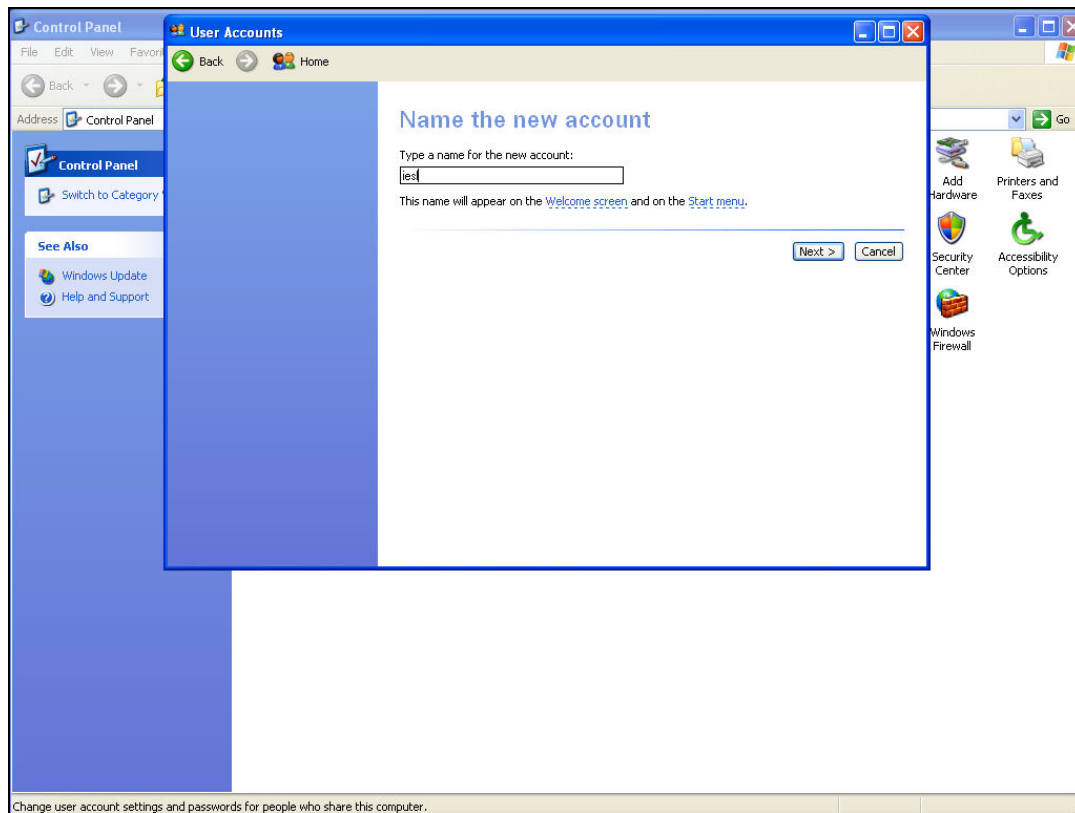
Slide 6

Slide notes:



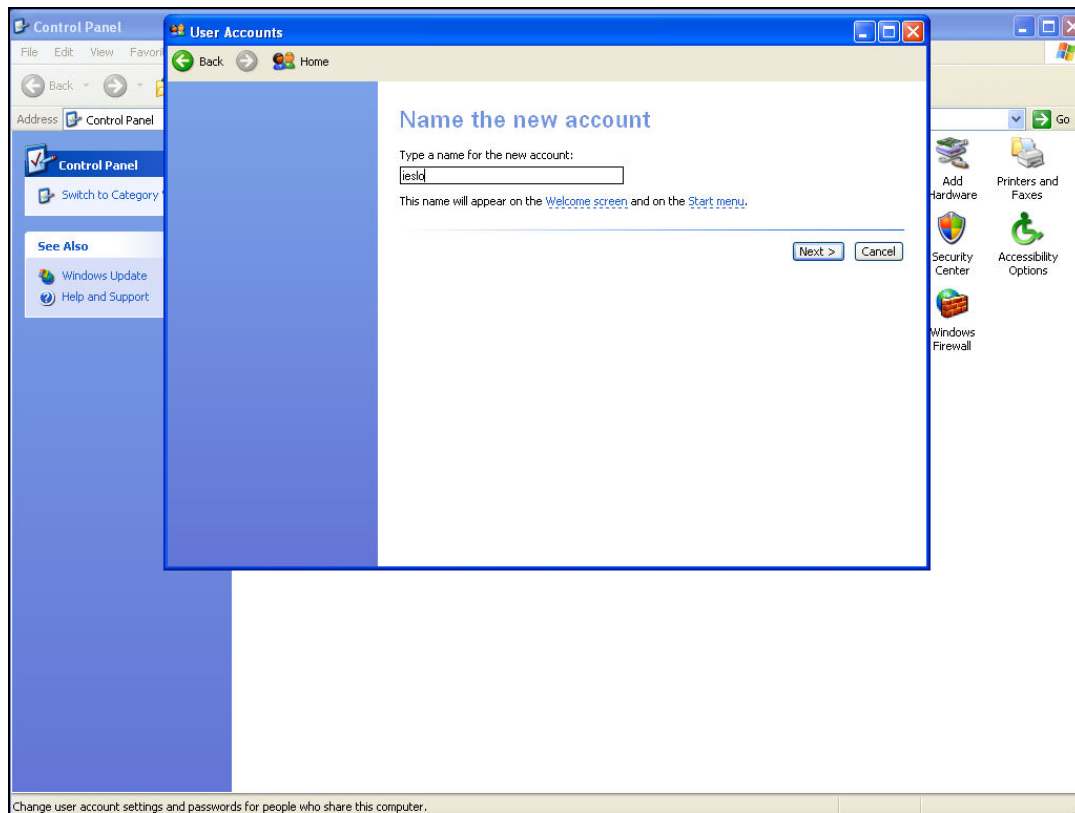
Slide 7

Slide notes:



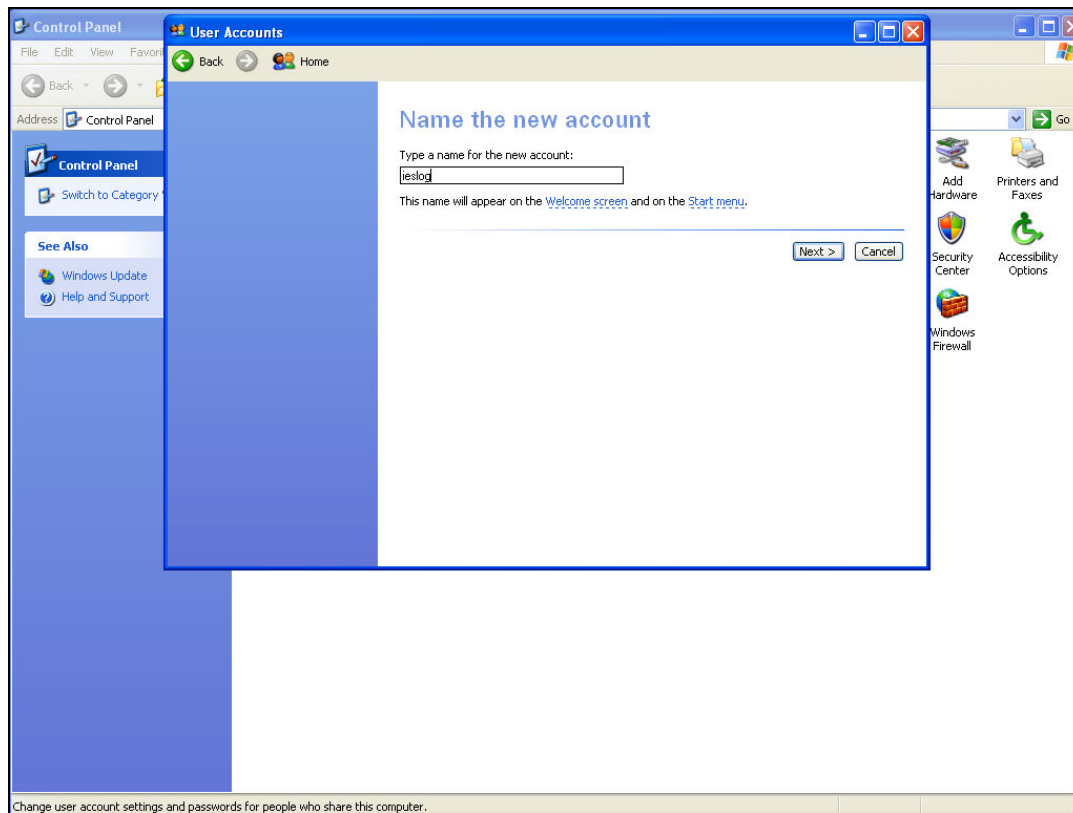
Slide 8

Slide notes:



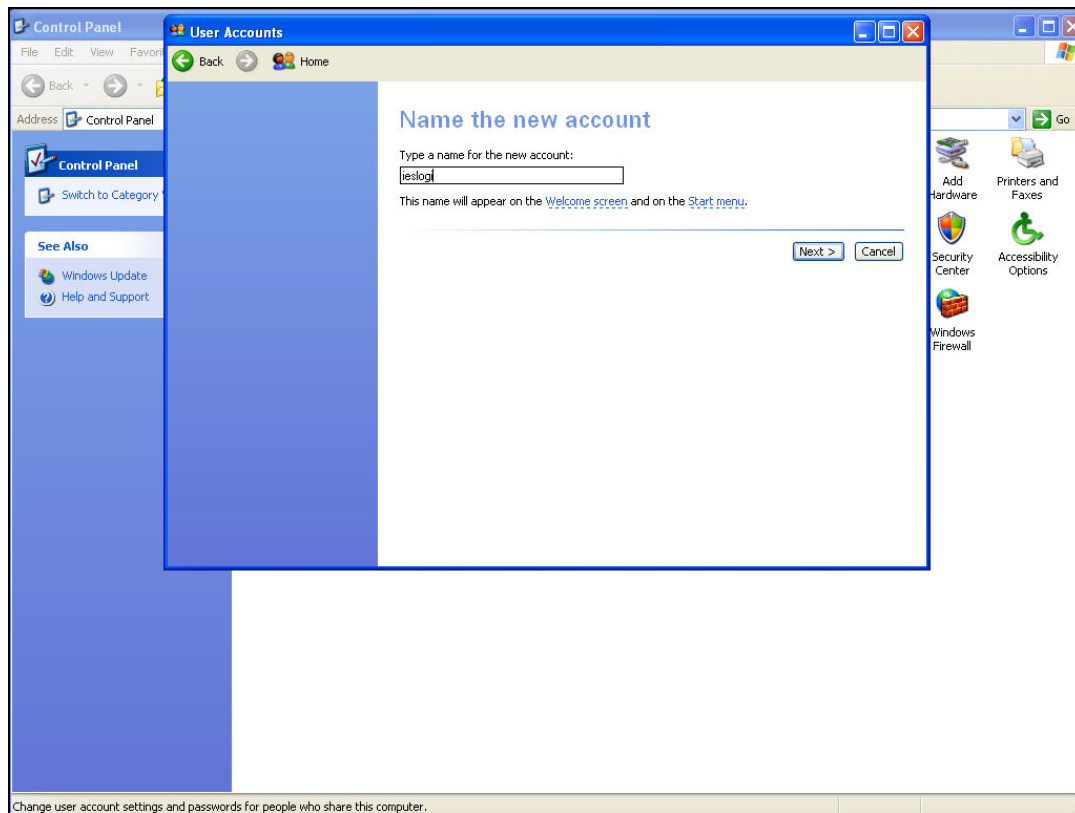
Slide 9

Slide notes:



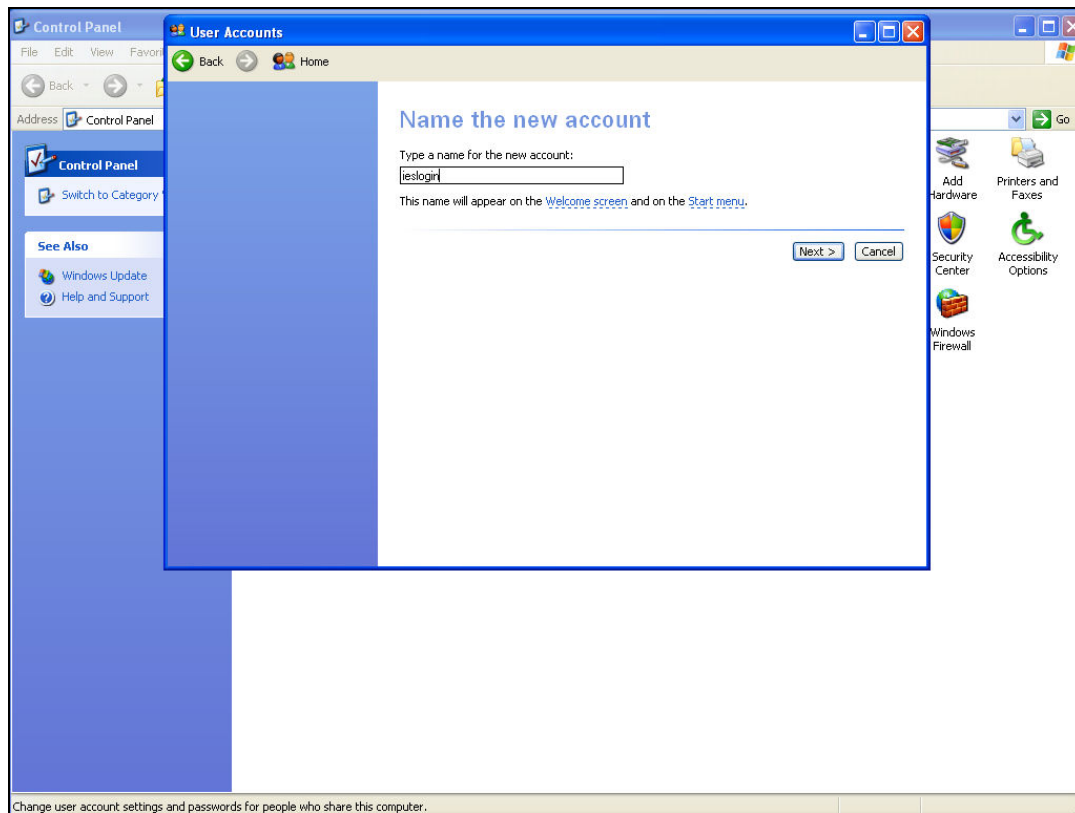
Slide 10

Slide notes:



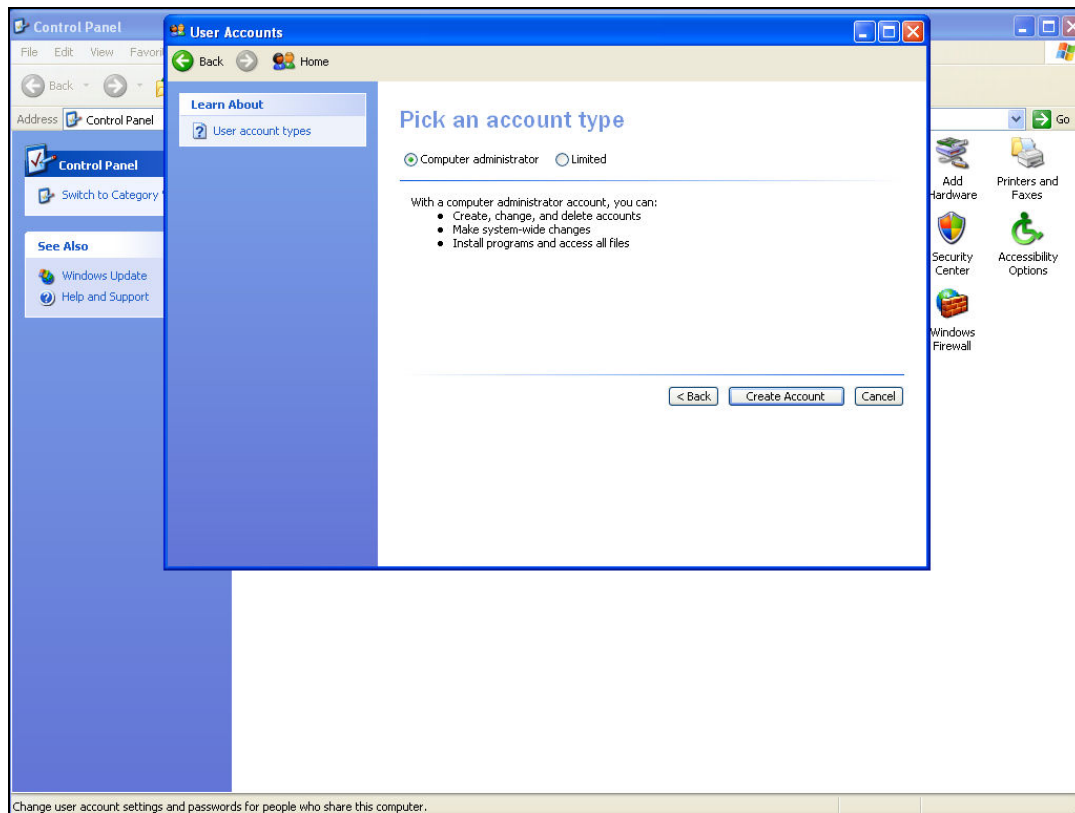
Slide 11

Slide notes:



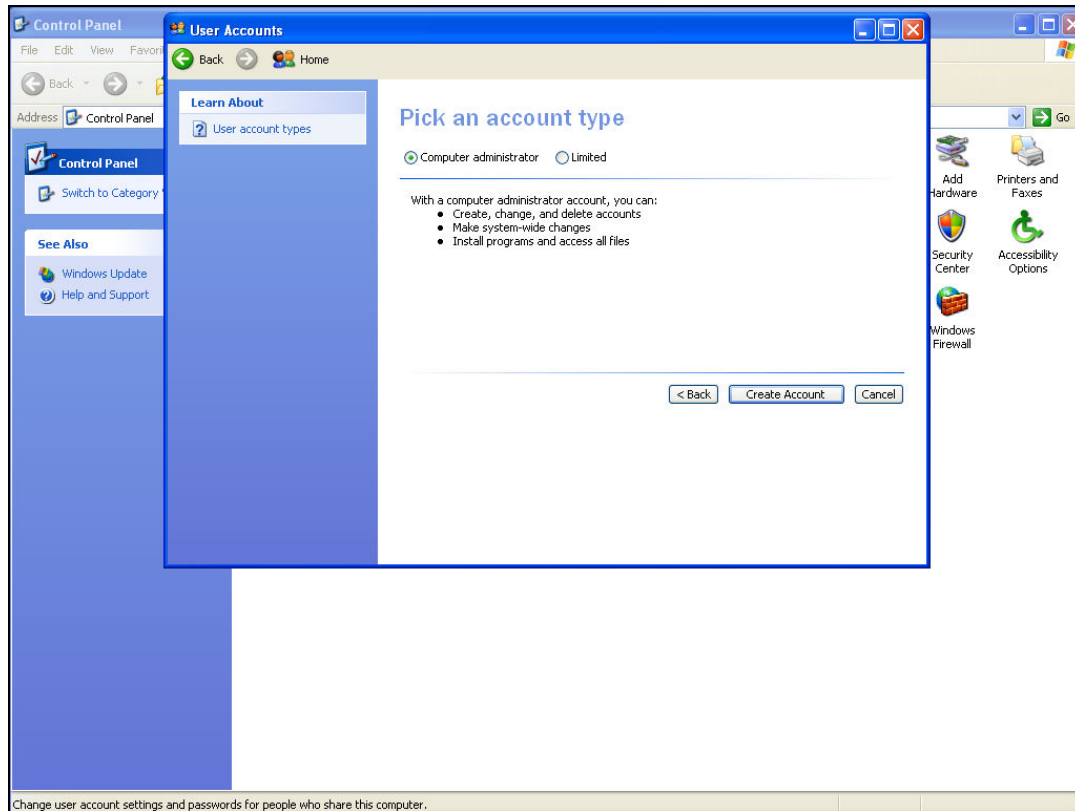
Slide 12

Slide notes:



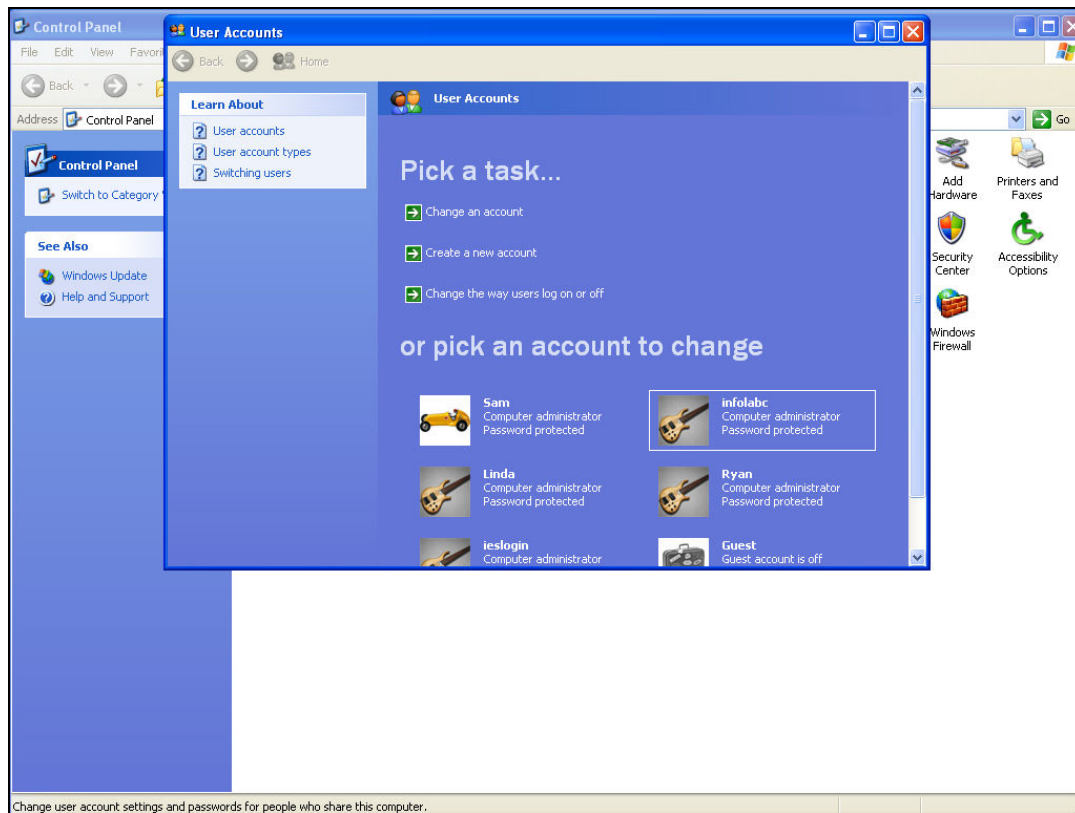
Slide 13

Slide notes: The User MUST be a Computer Administrator with full Administrator privileges.



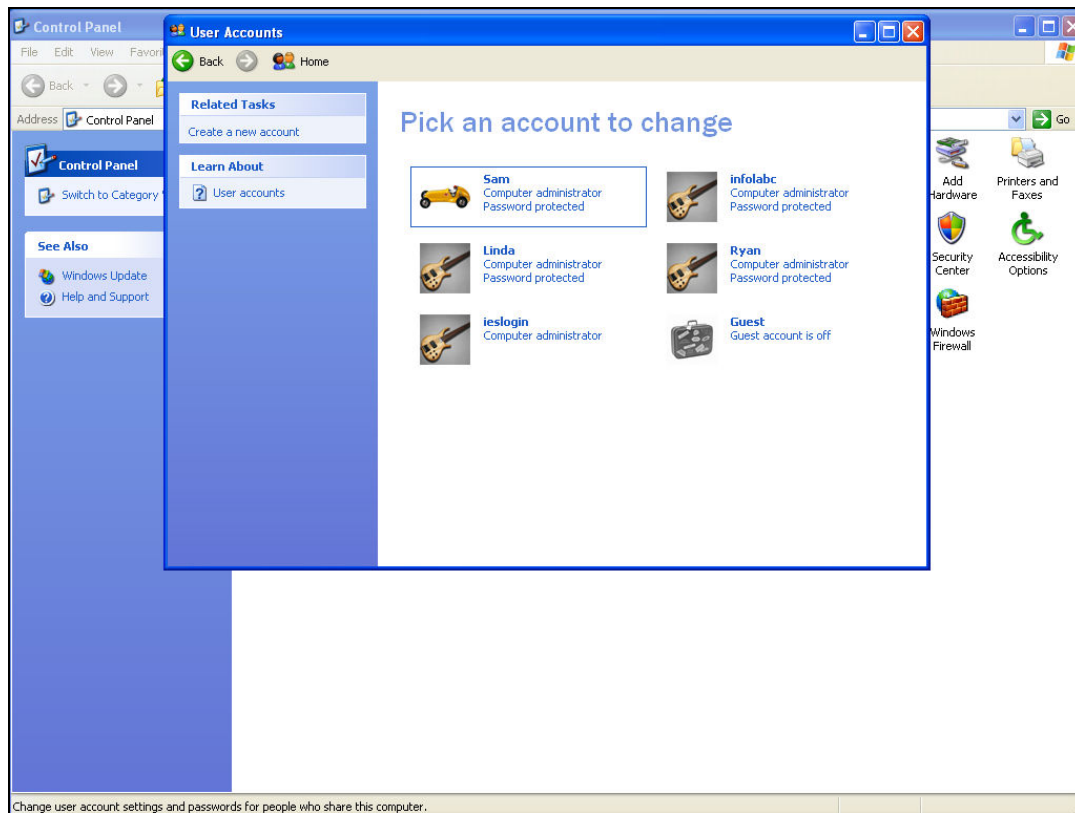
Slide 14

Slide notes:



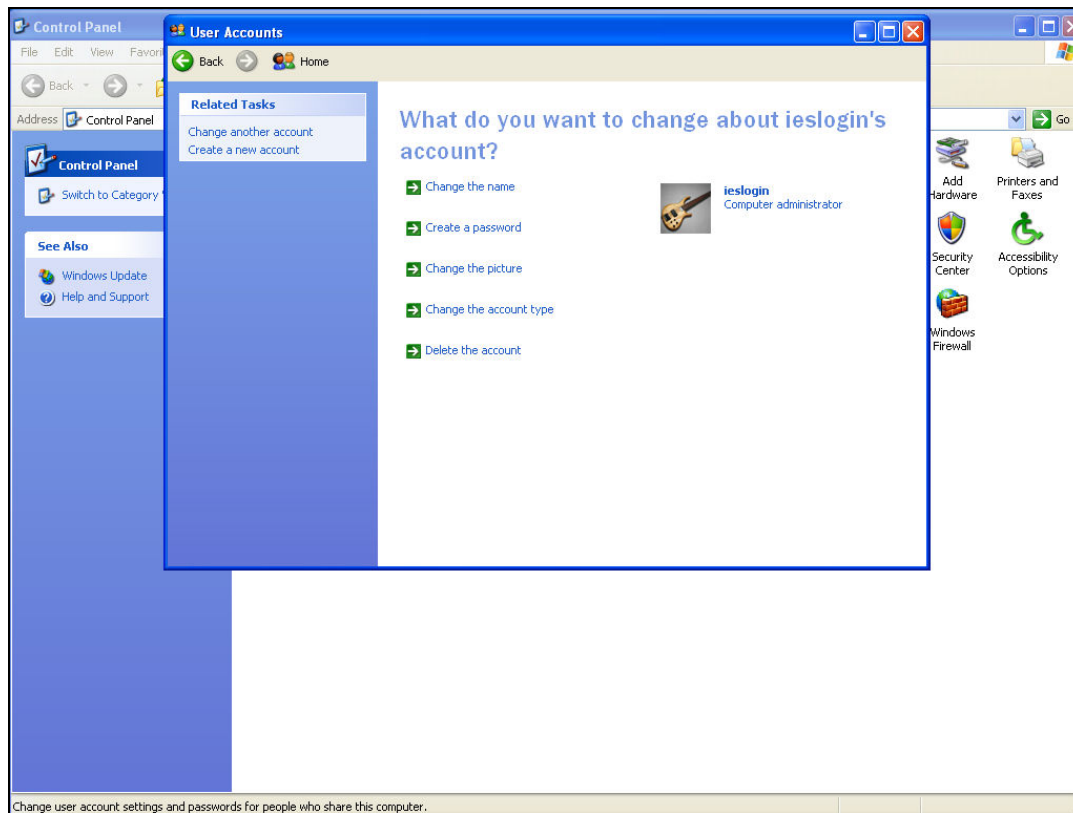
Slide 15

Slide notes:



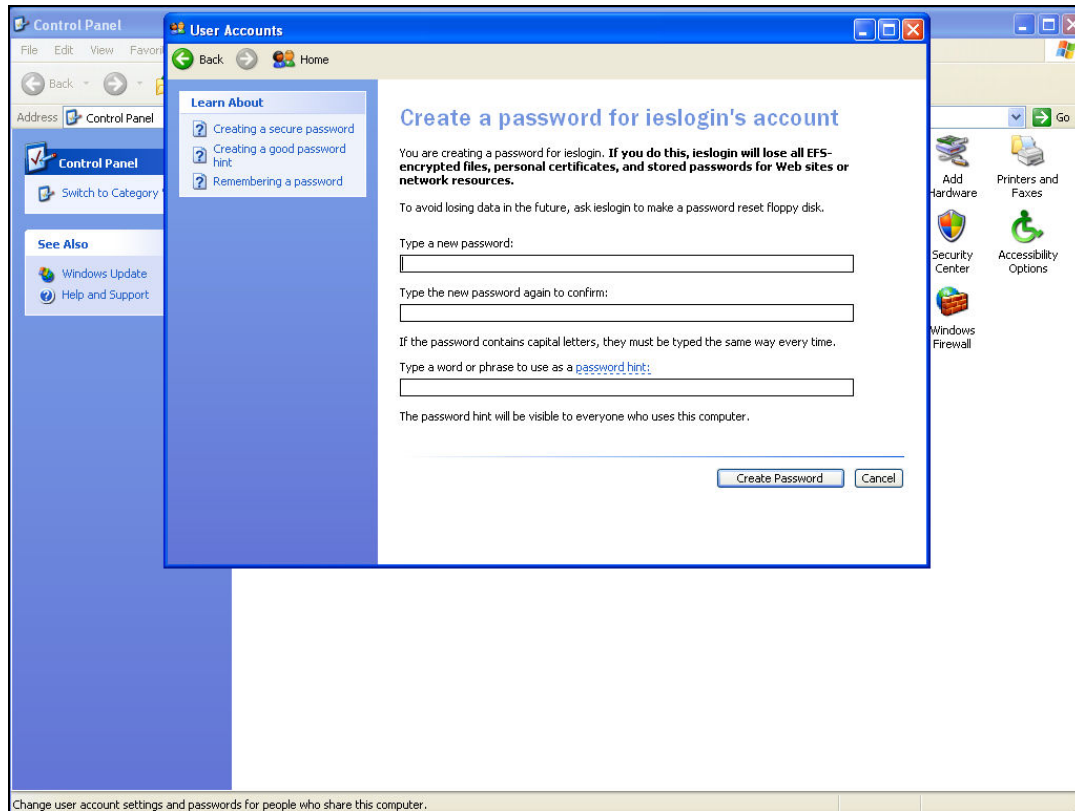
Slide 16

Slide notes: Next, we choose a password for this User Account.



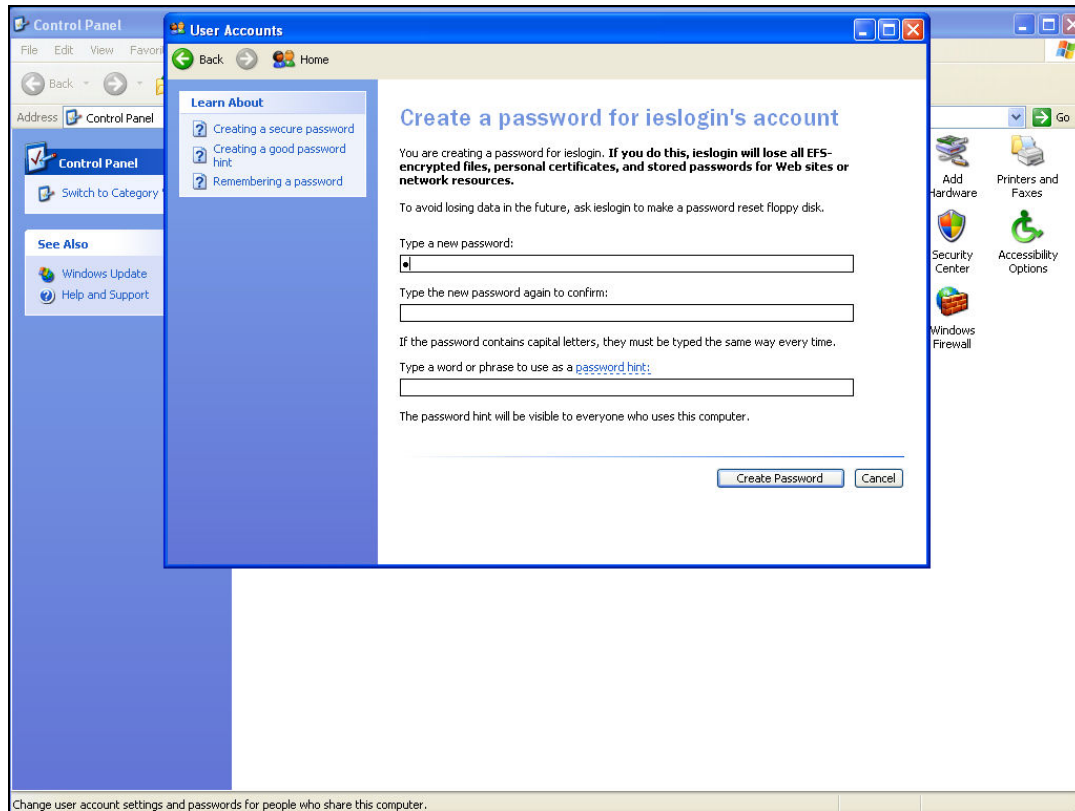
Slide 17

Slide notes:



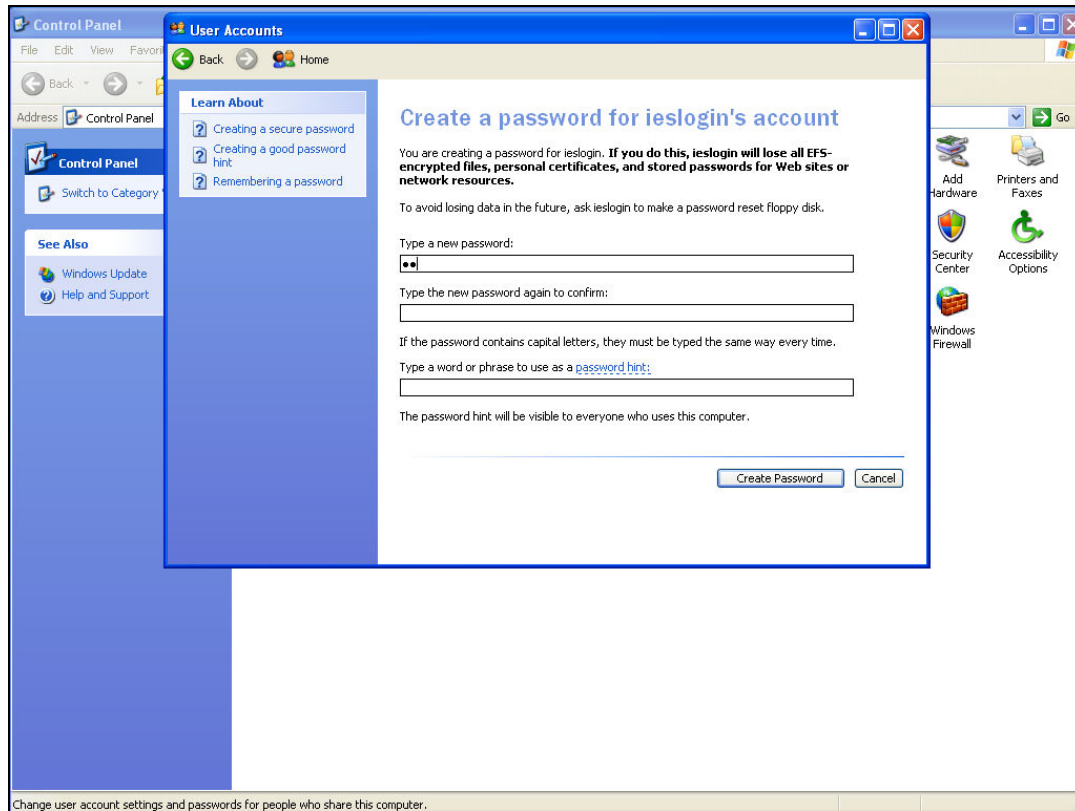
Slide 18

Slide notes:



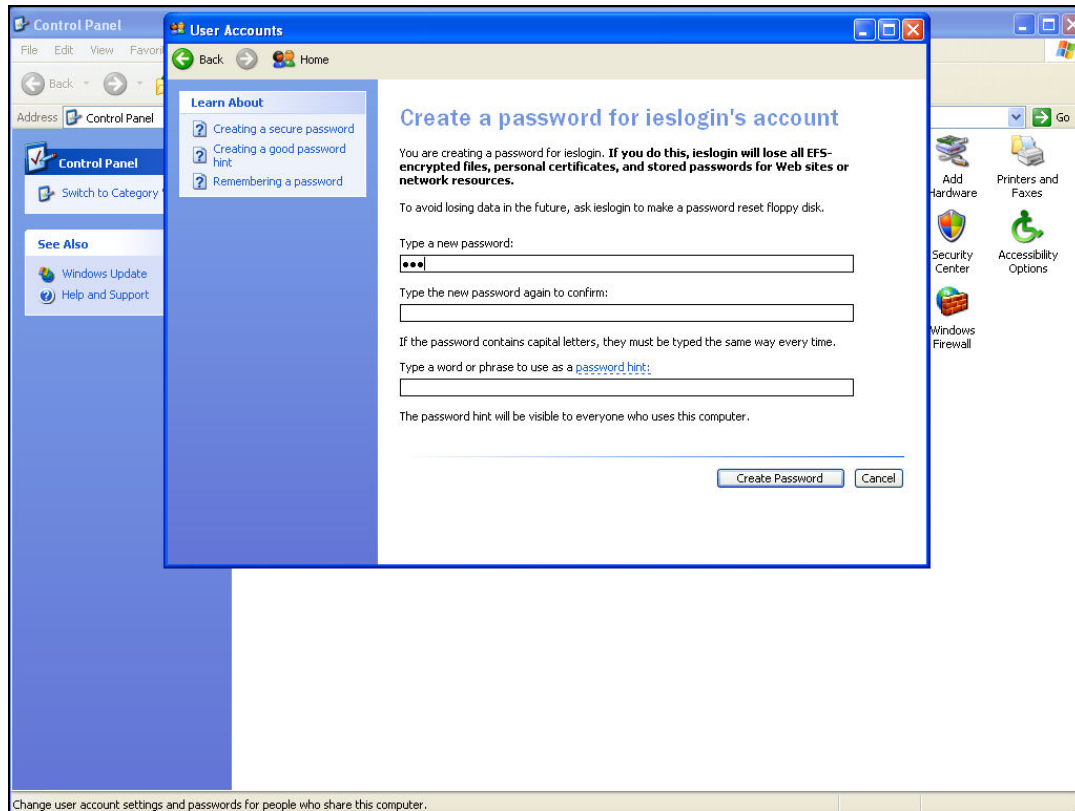
Slide 19

Slide notes: This password for "ieslogin" is a secret password known only to the Administrators of the QM Server machine. The password is restricted to alphanumeric characters, i.e. only alphabetic characters and number digits are allowed, otherwise IES will reject the password.



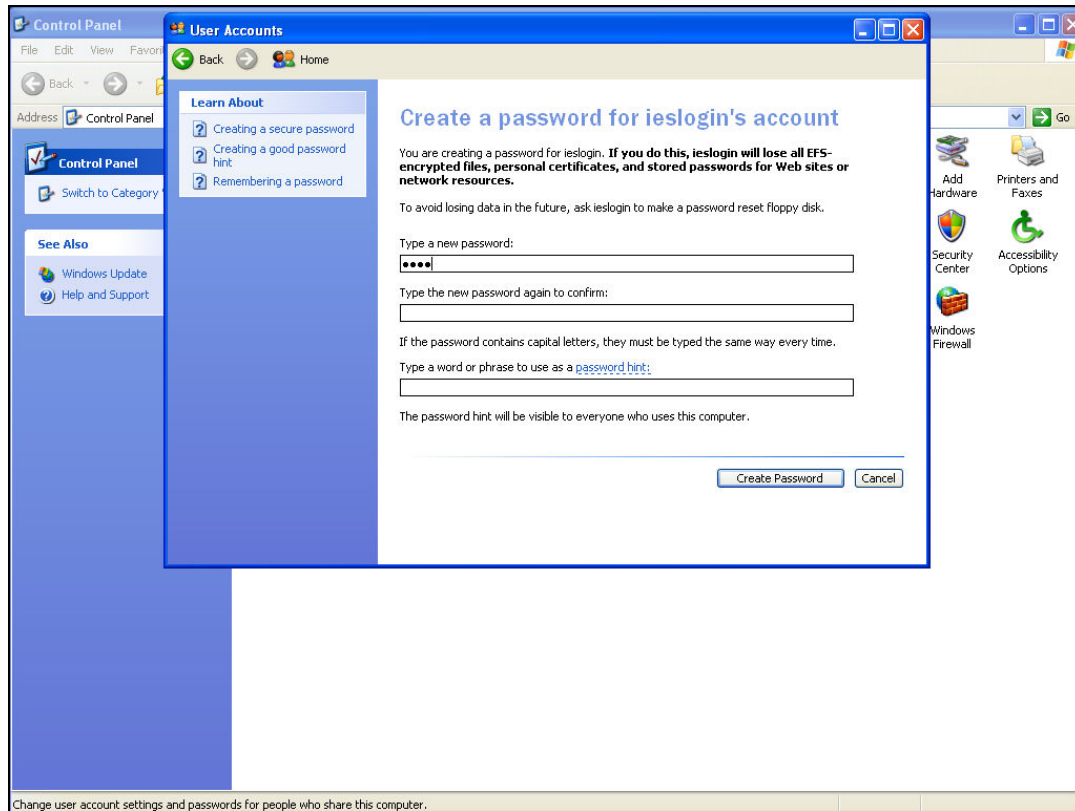
Slide 20

Slide notes:



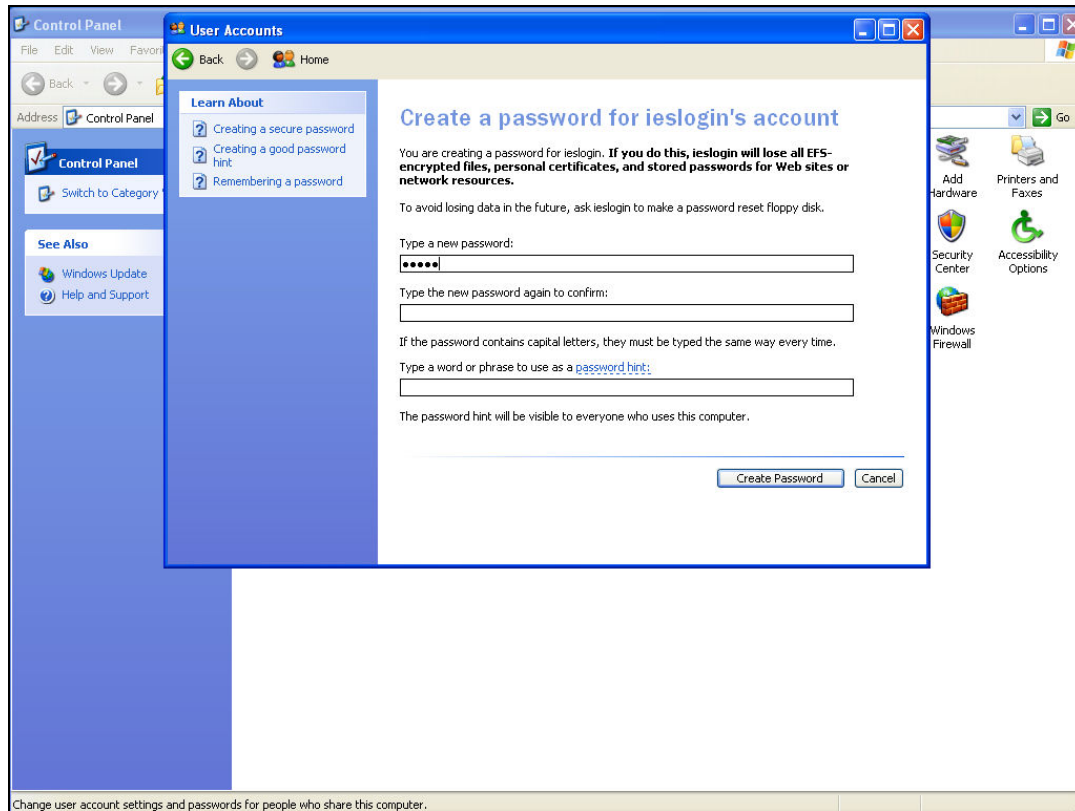
Slide 21

Slide notes:



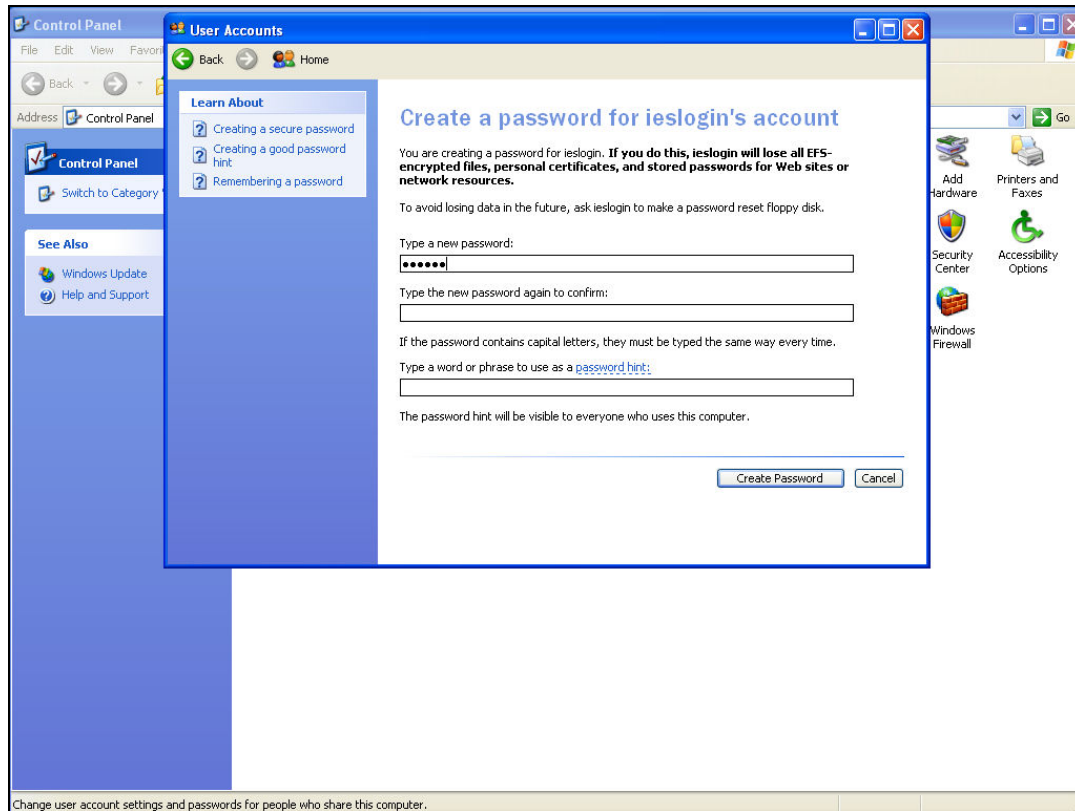
Slide 22

Slide notes:



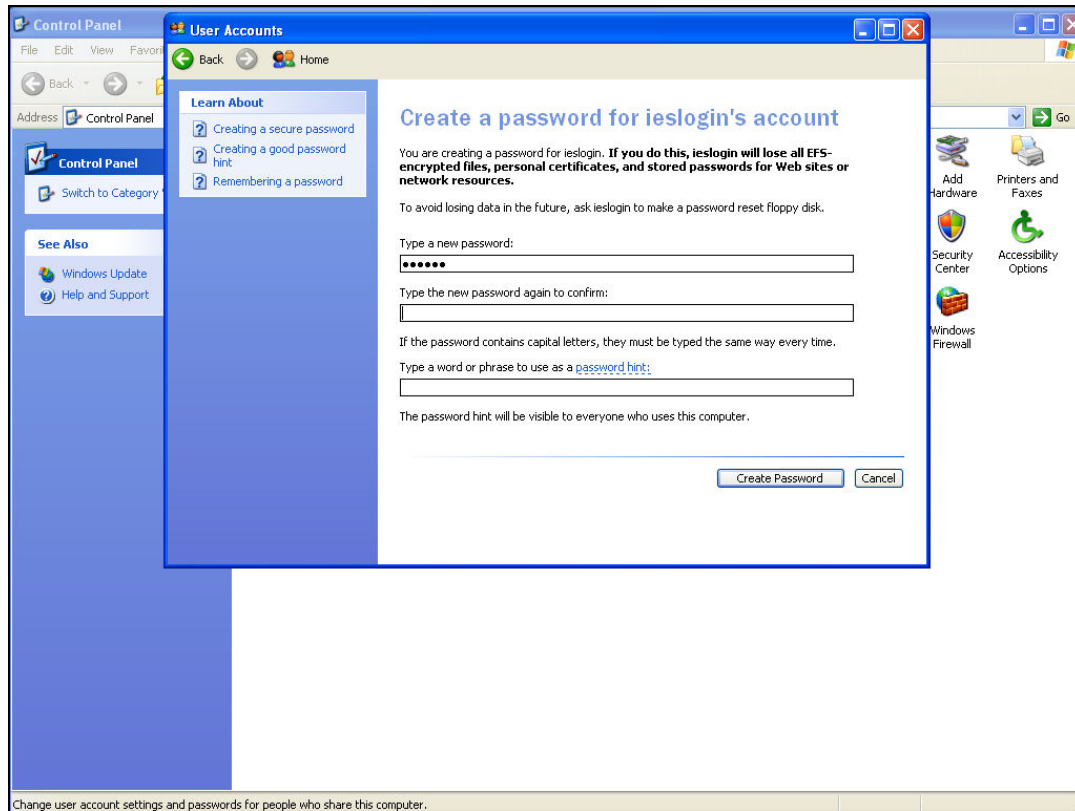
Slide 23

Slide notes:



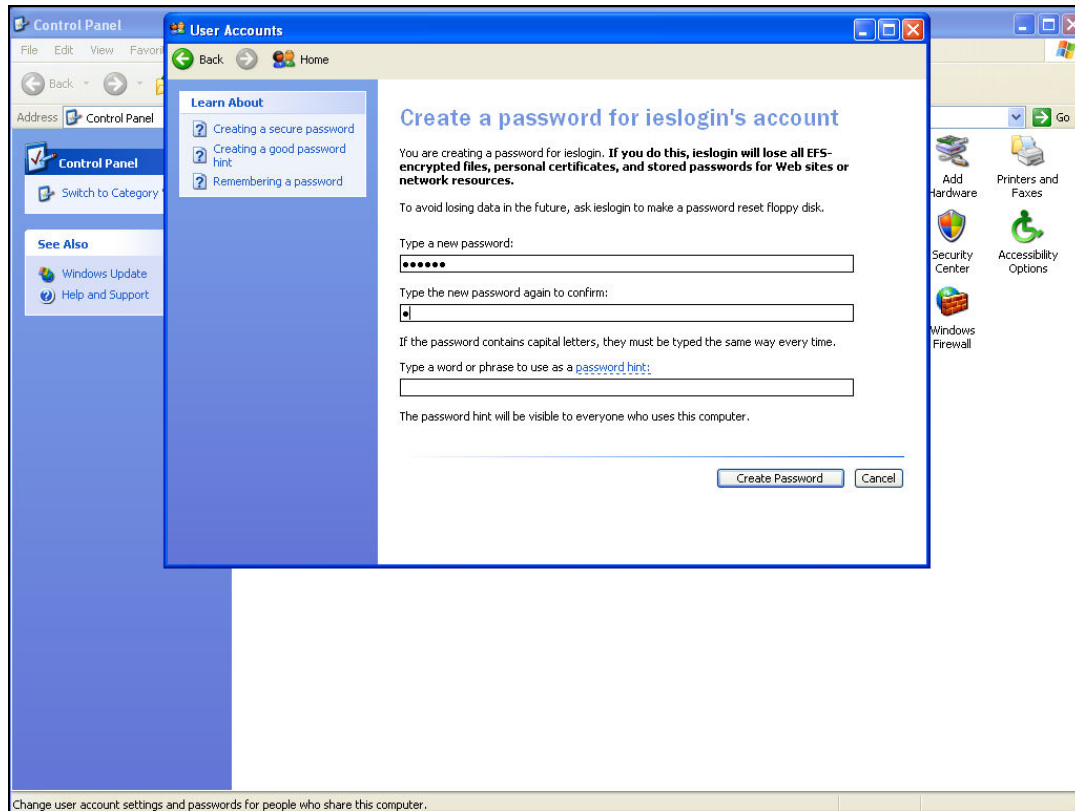
Slide 24

Slide notes:



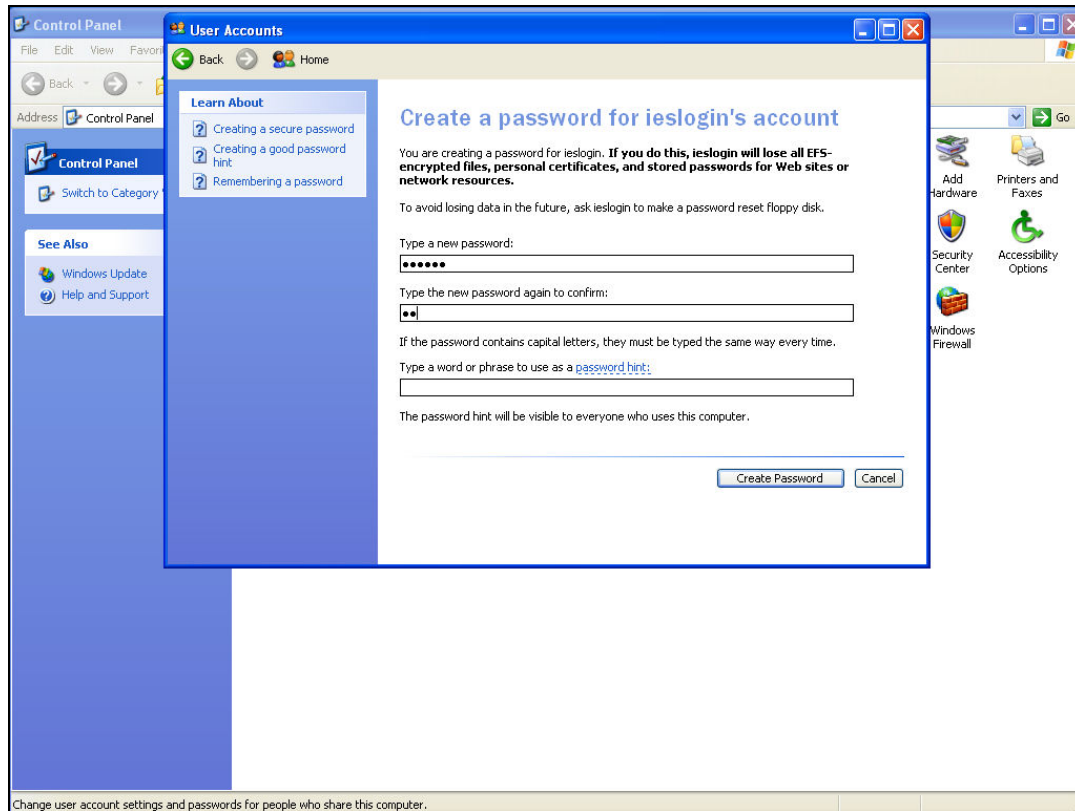
Slide 25

Slide notes:



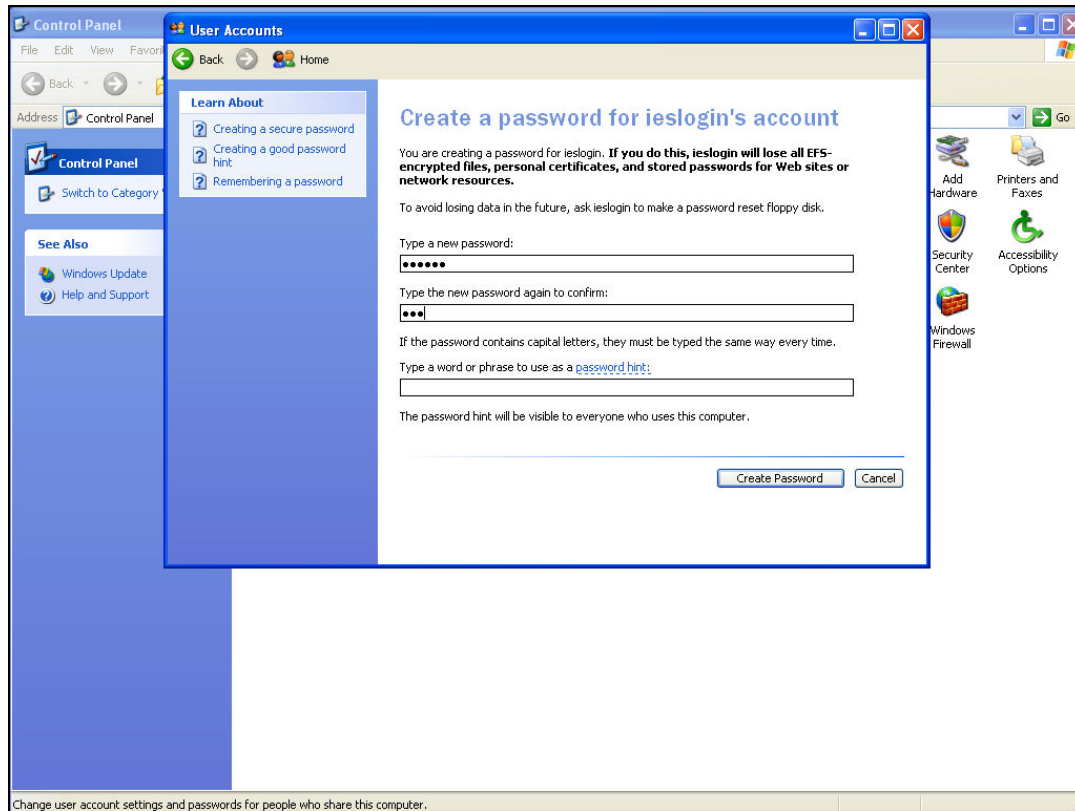
Slide 26

Slide notes:



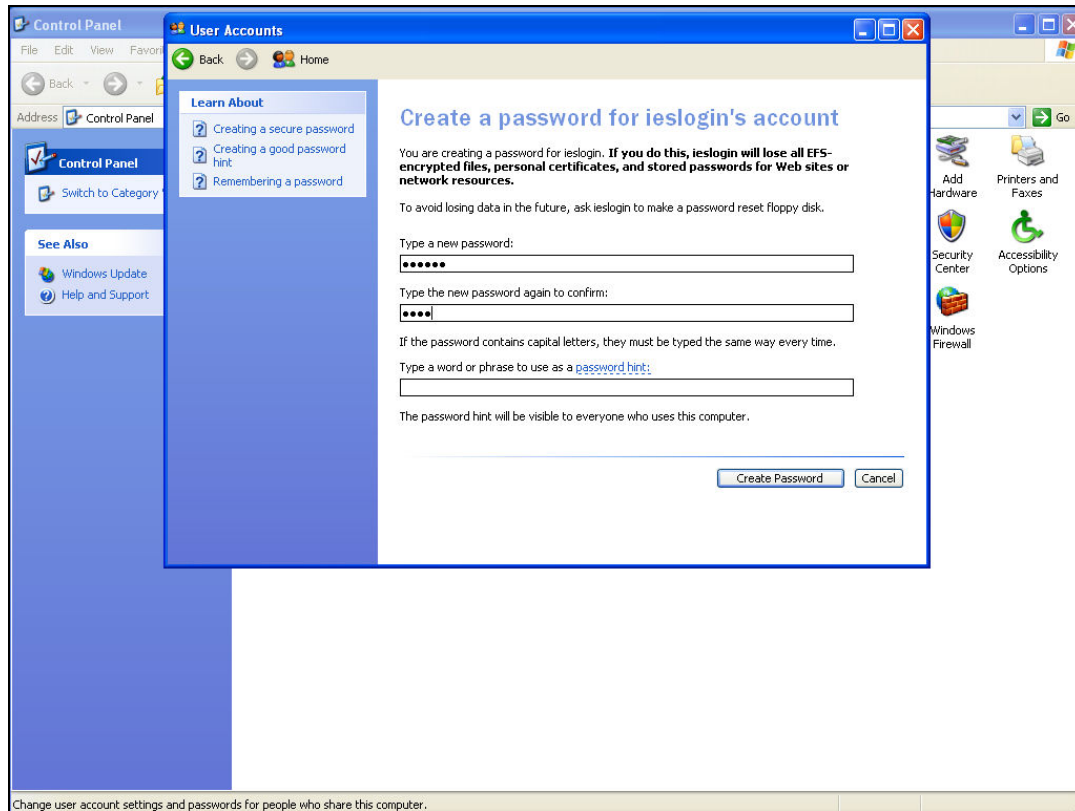
Slide 27

Slide notes:



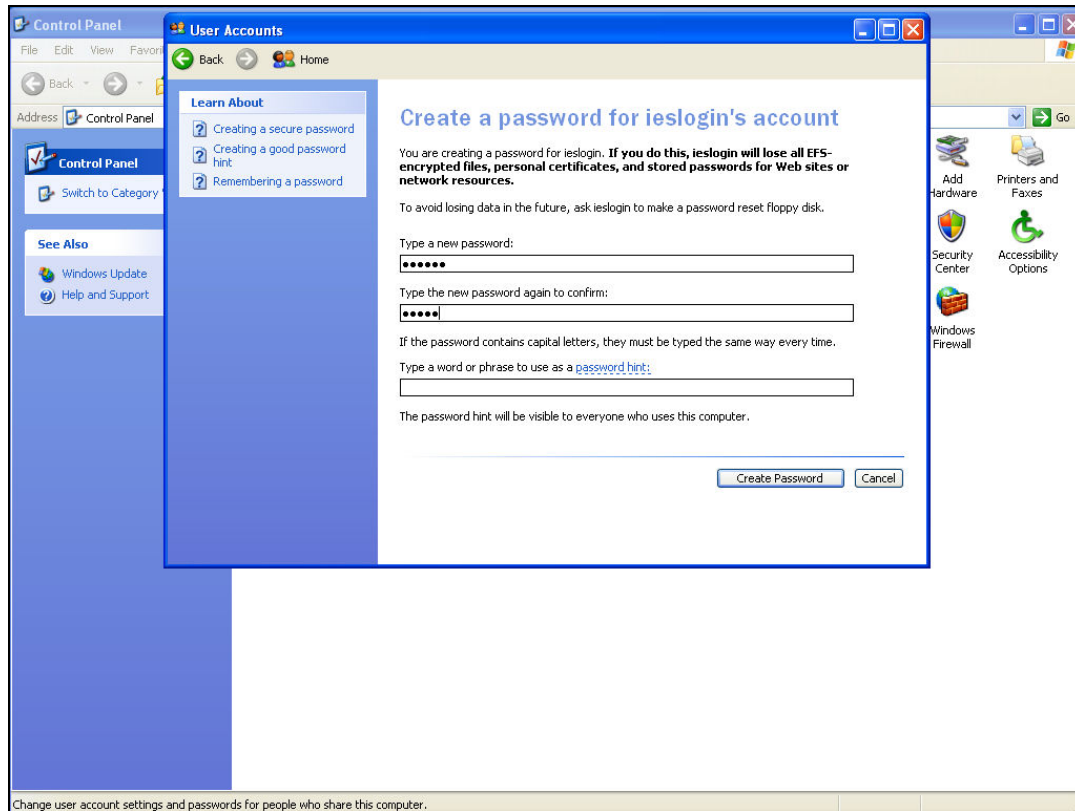
Slide 28

Slide notes:



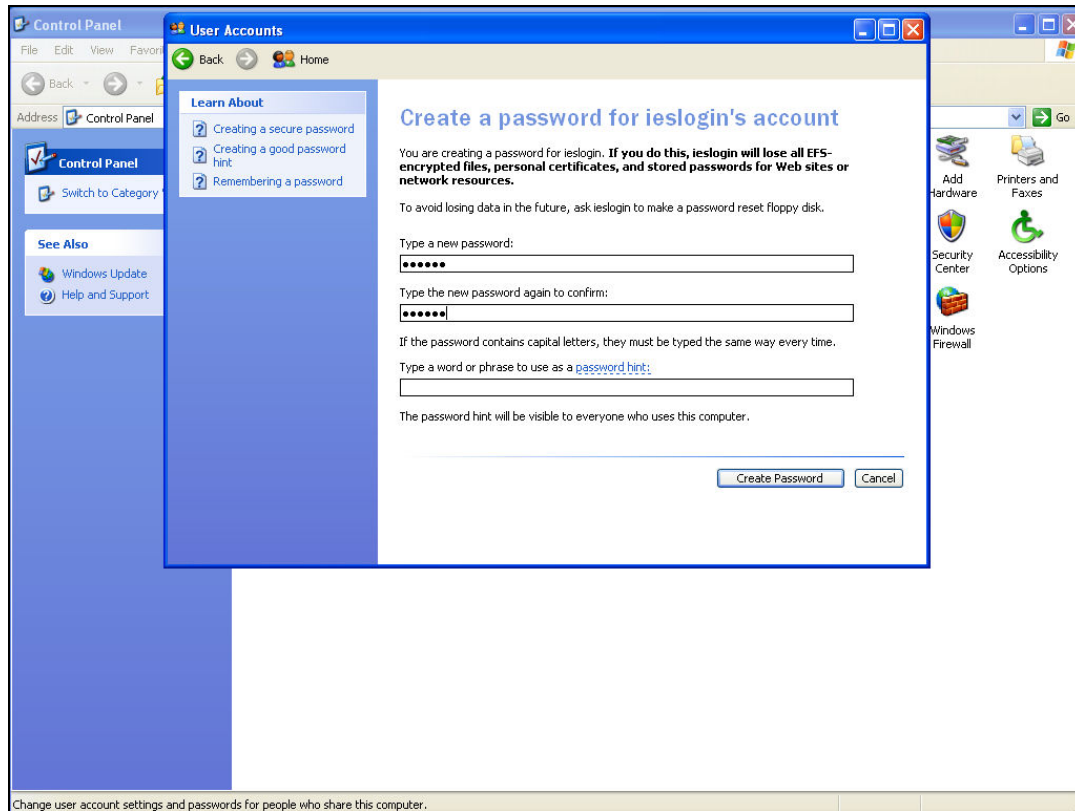
Slide 29

Slide notes:



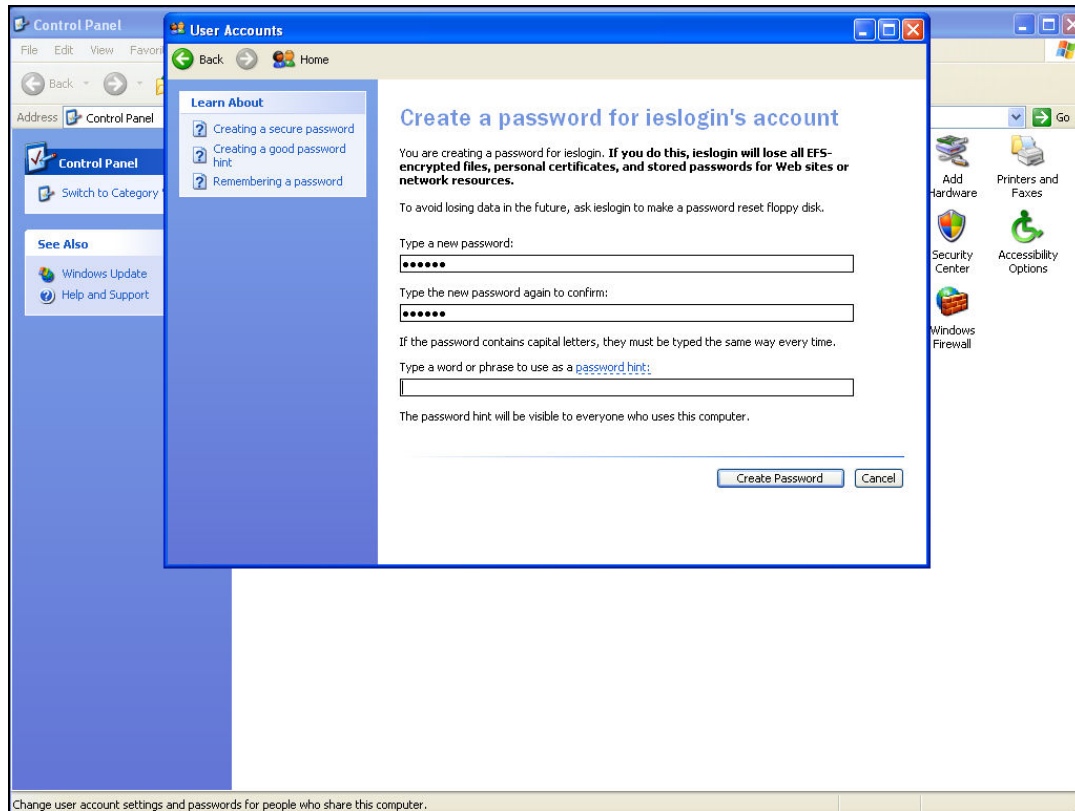
Slide 30

Slide notes:



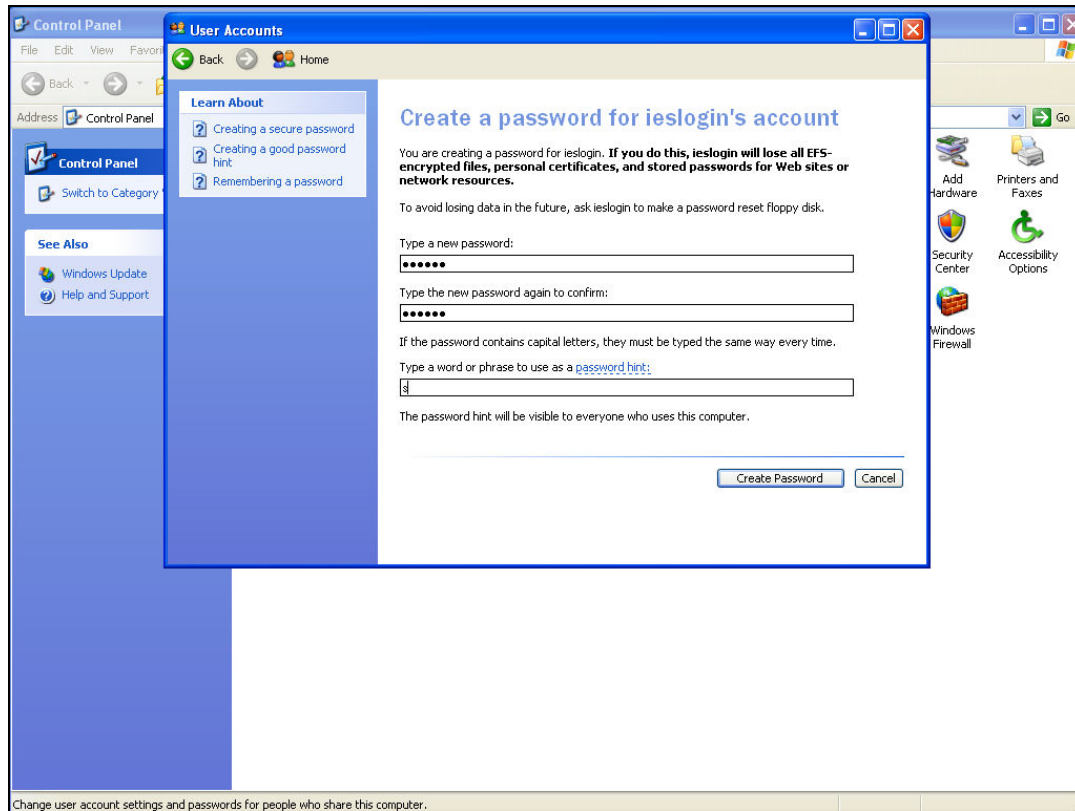
Slide 31

Slide notes:



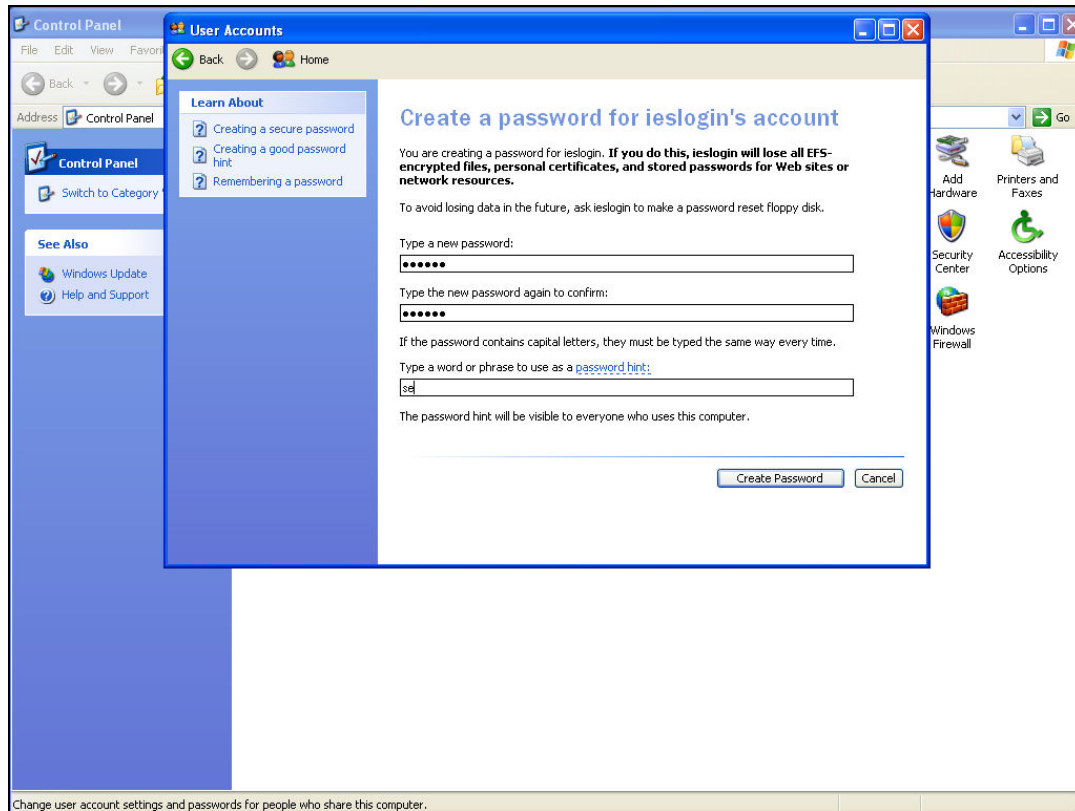
Slide 32

Slide notes:



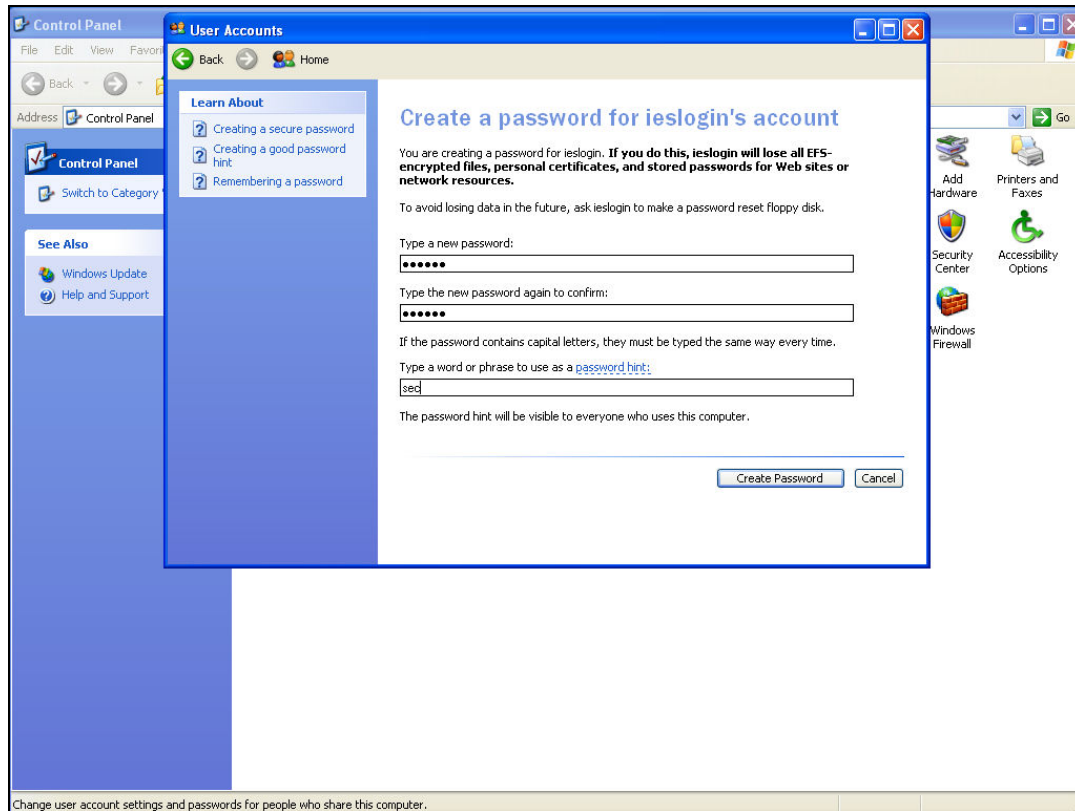
Slide 33

Slide notes:



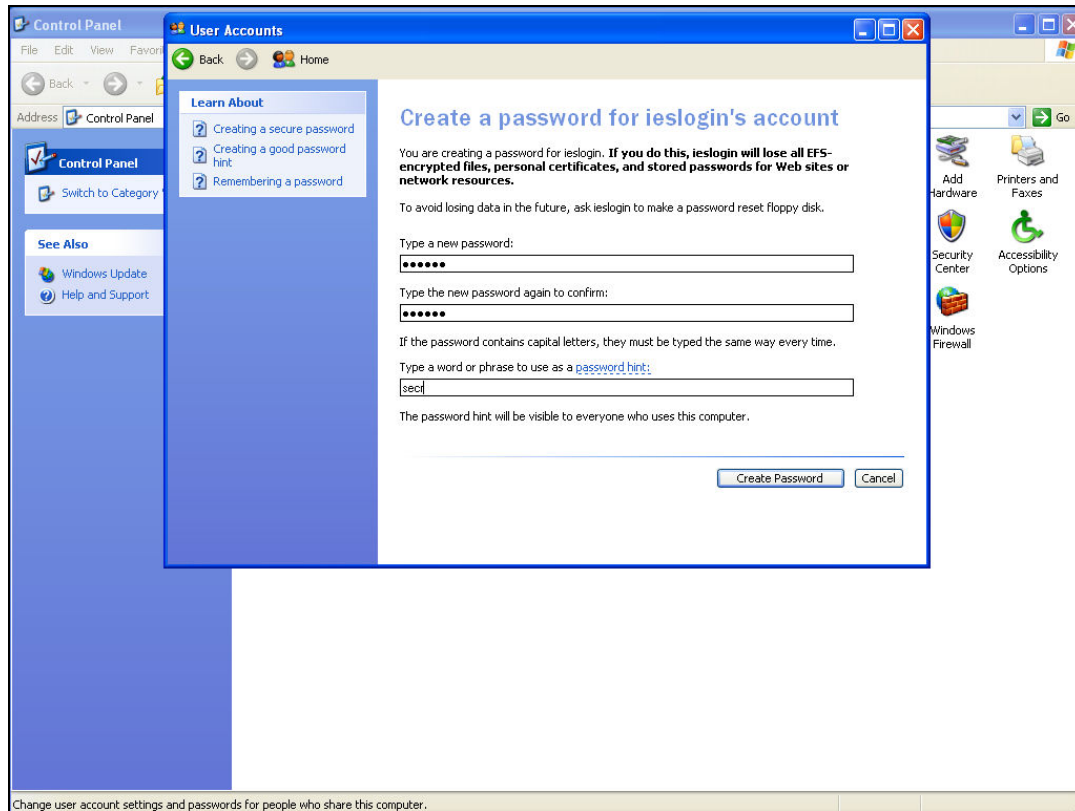
Slide 34

Slide notes:



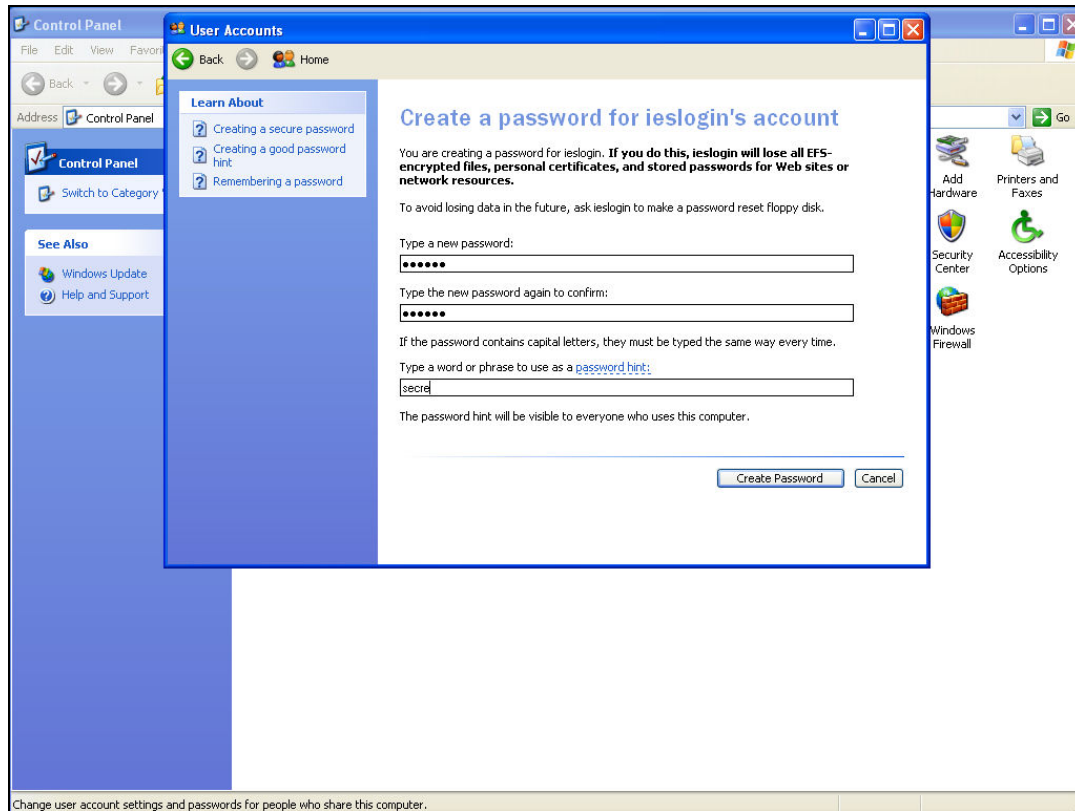
Slide 35

Slide notes:



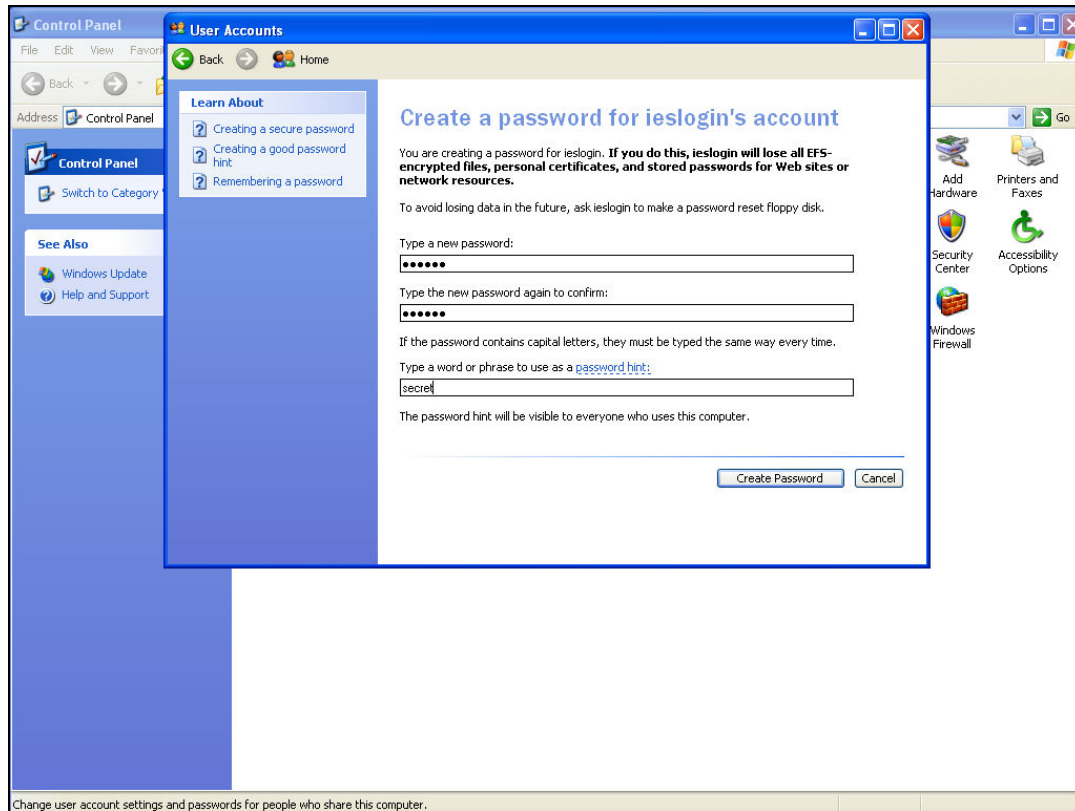
Slide 36

Slide notes:



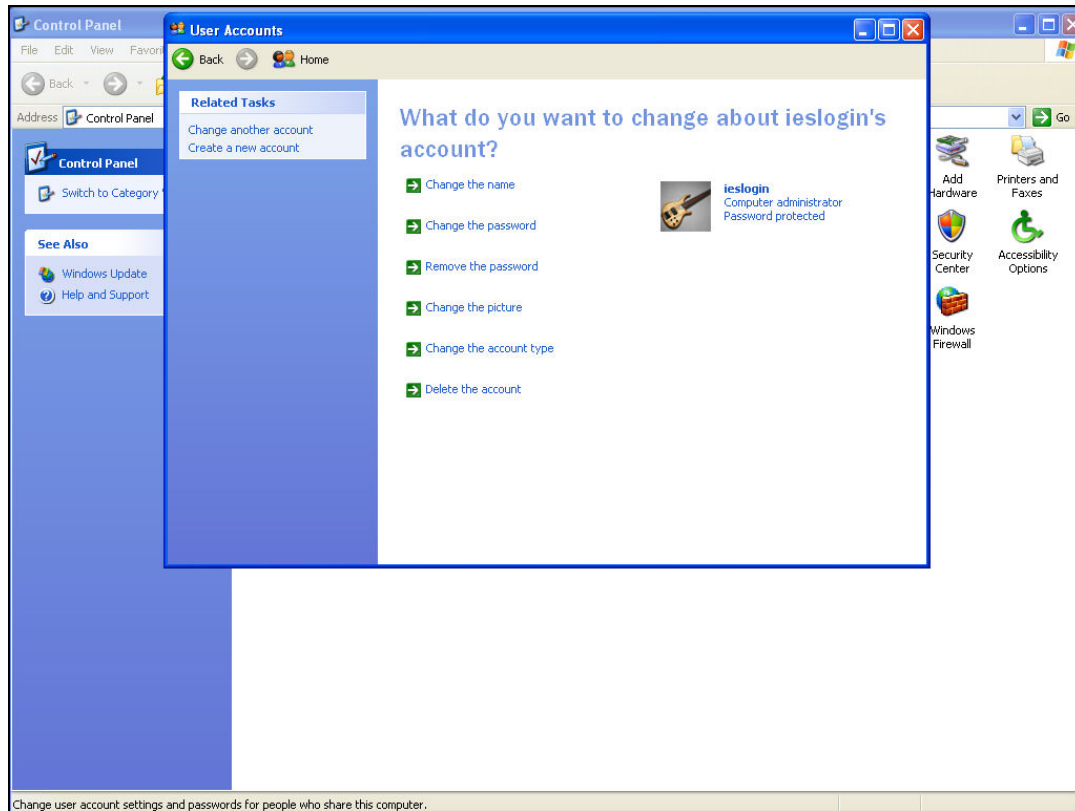
Slide 37

Slide notes: The password hint will of course be local. In our example we just say "secret".



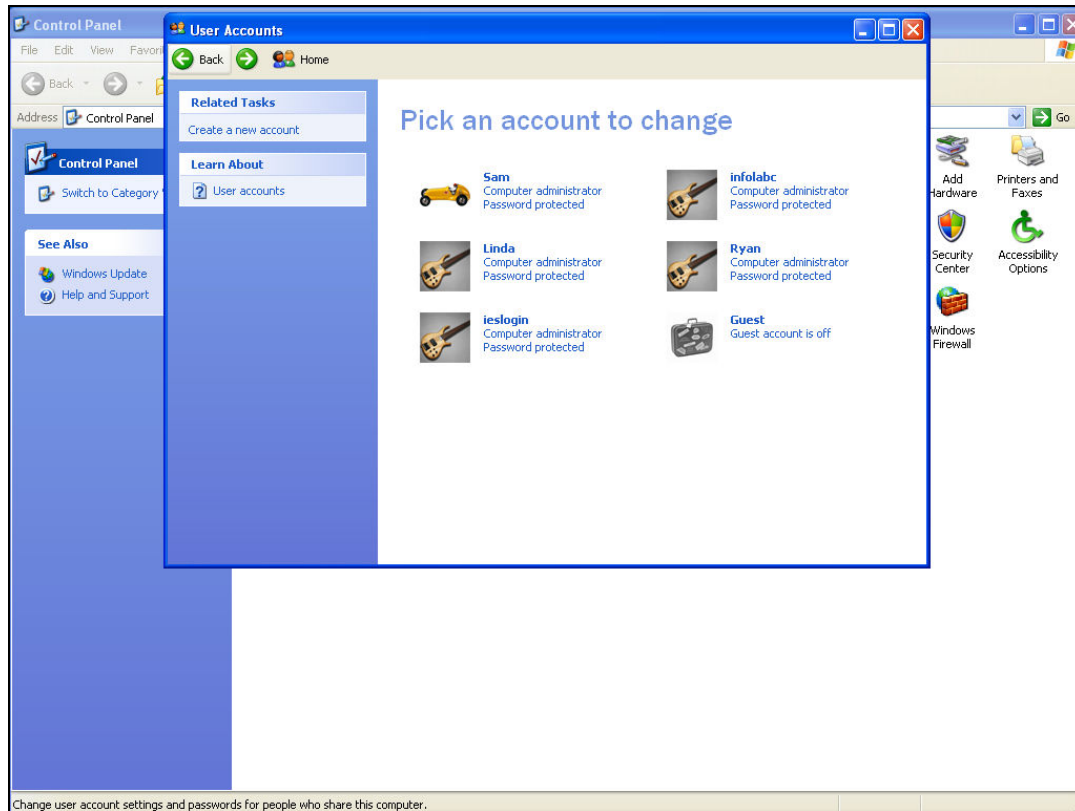
Slide 38

Slide notes:



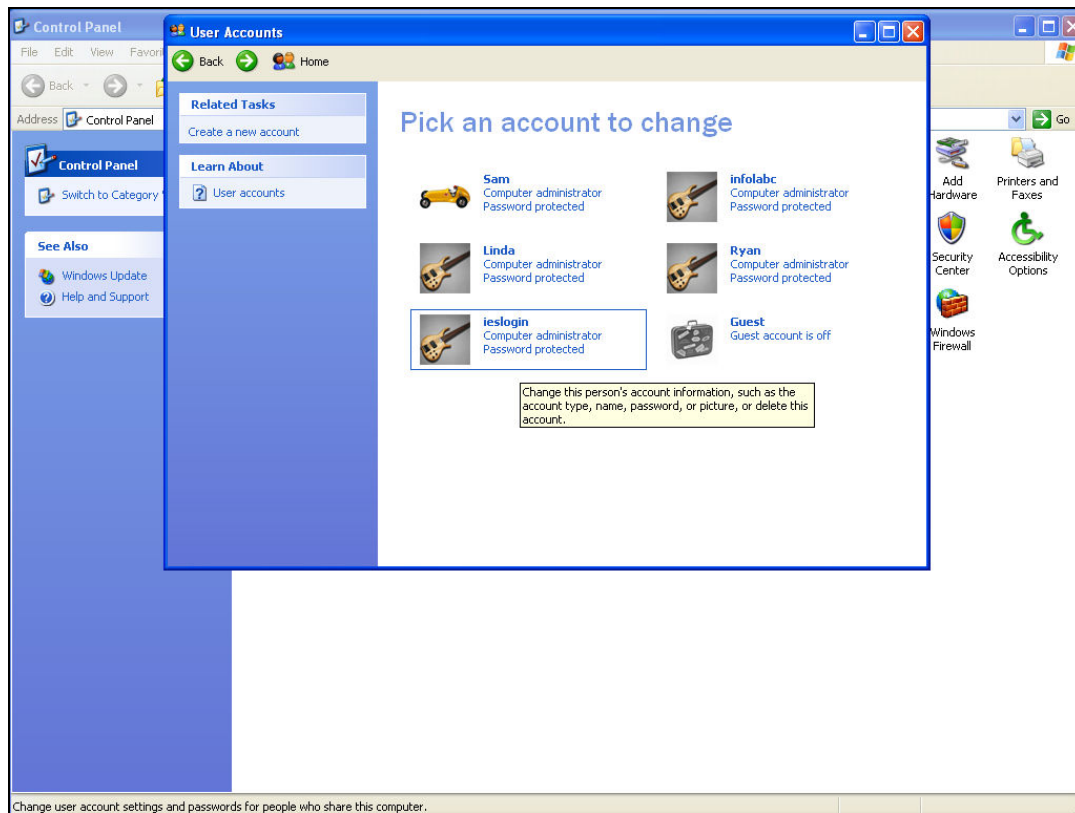
Slide 39

Slide notes:



Slide 40

Slide notes:



Slide 41

Slide notes: So we note that we now have a domain User Account called "ieslogin", with full Administrator privileges, specifically on the QM server machine, and nowhere else.