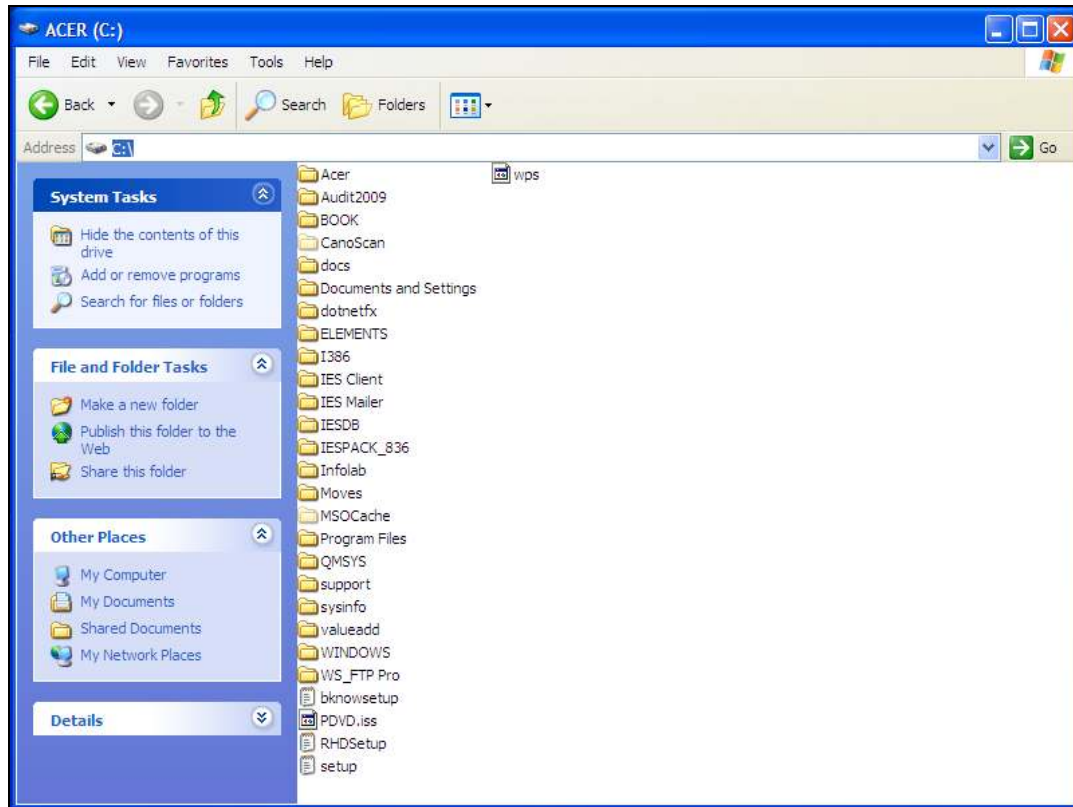


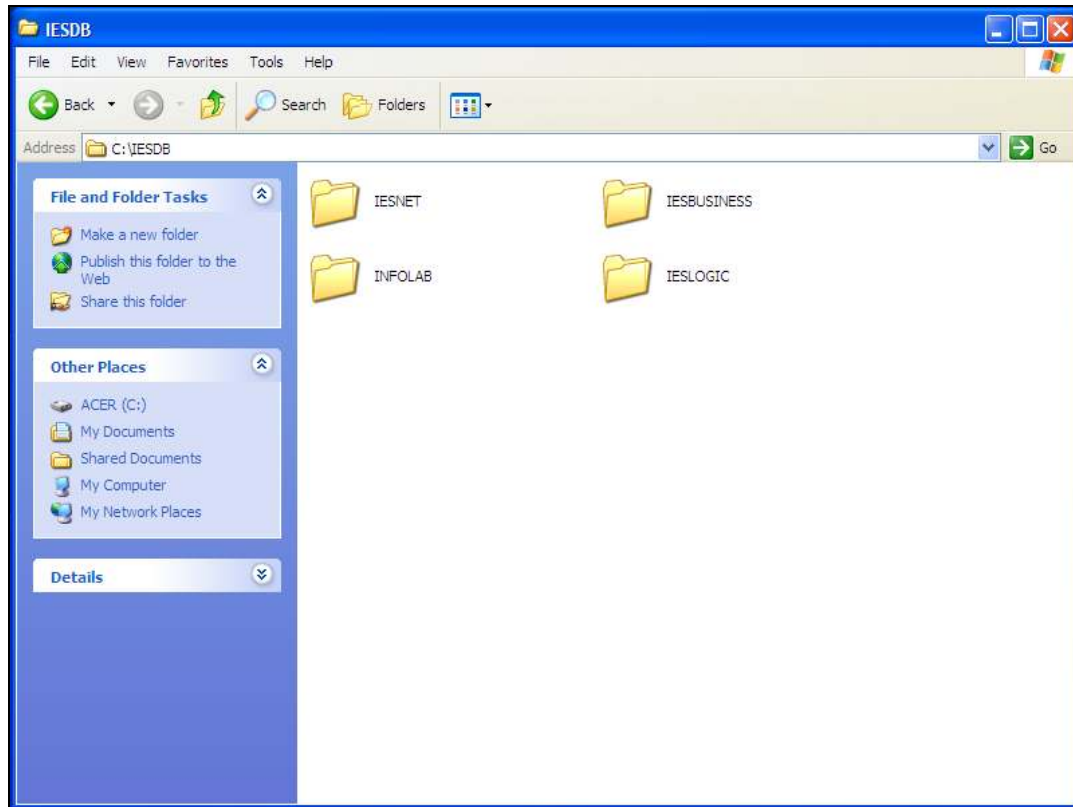
## Slide 1

Slide notes: In this tutorial, we set up the required sharing for the shared folders in the IES installation.



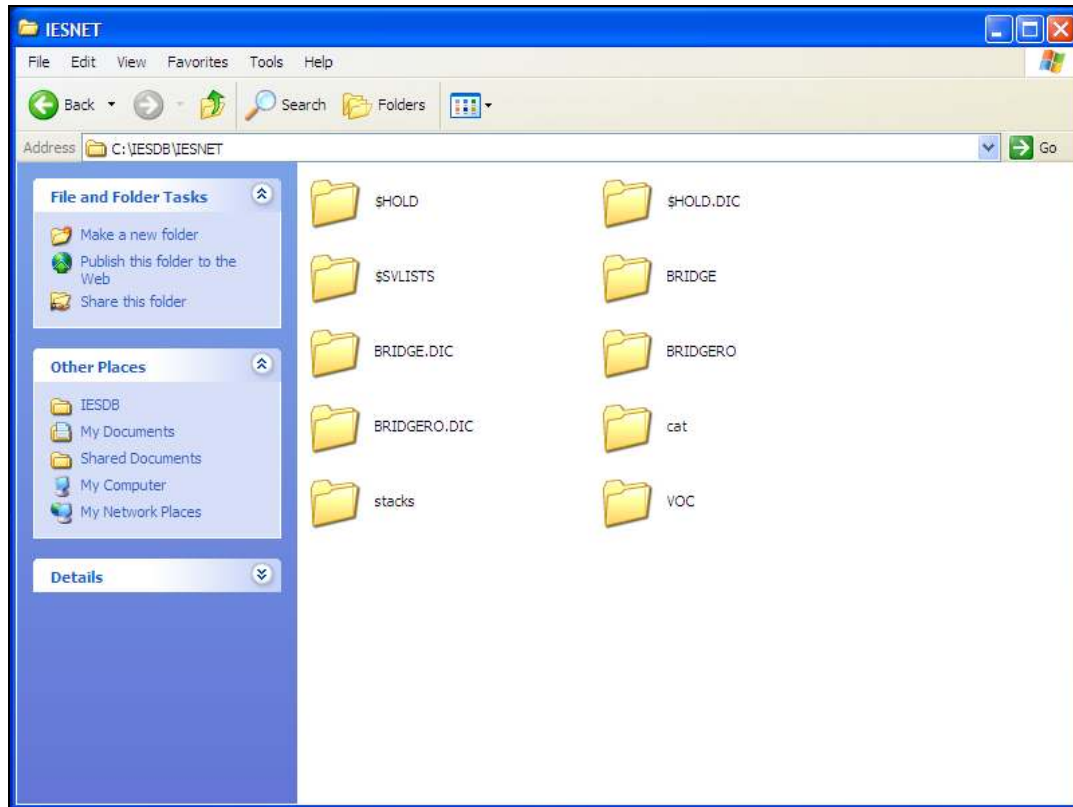
## Slide 2

Slide notes: In this case, the IES is installed on the "C" drive of the Server, and the Folders we need to share are in the IESDB folder.



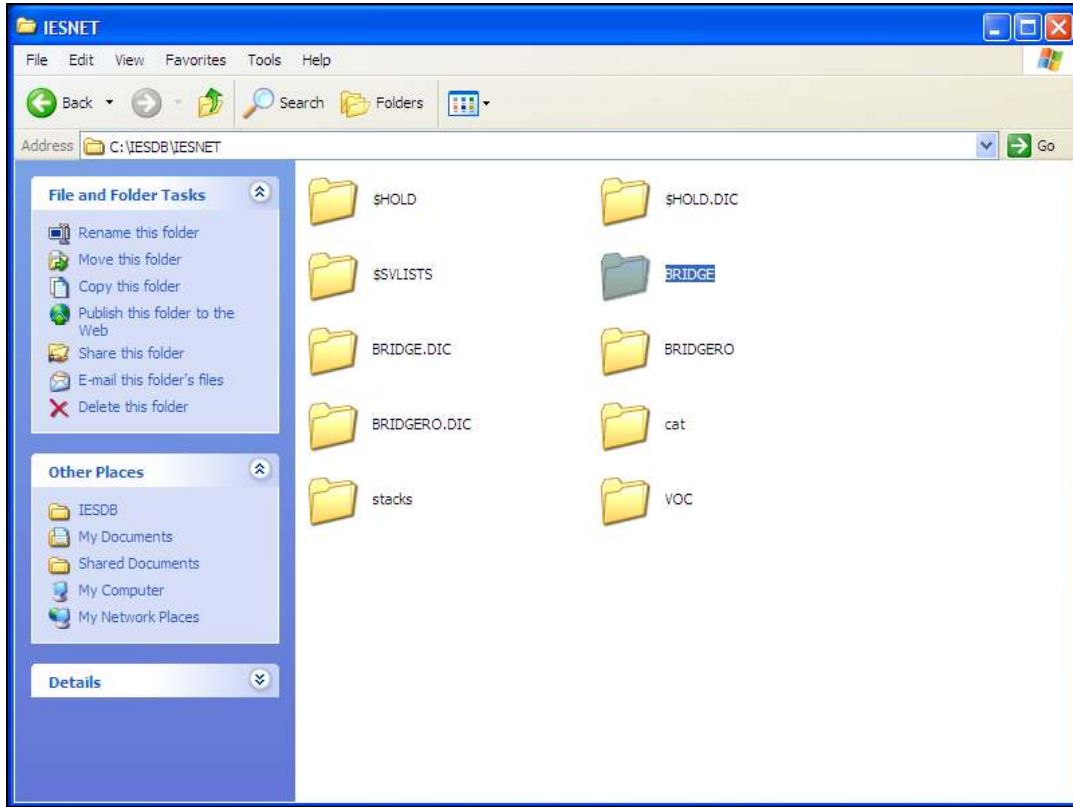
Slide 3

Slide notes: Next we open the IESNET Datamart.

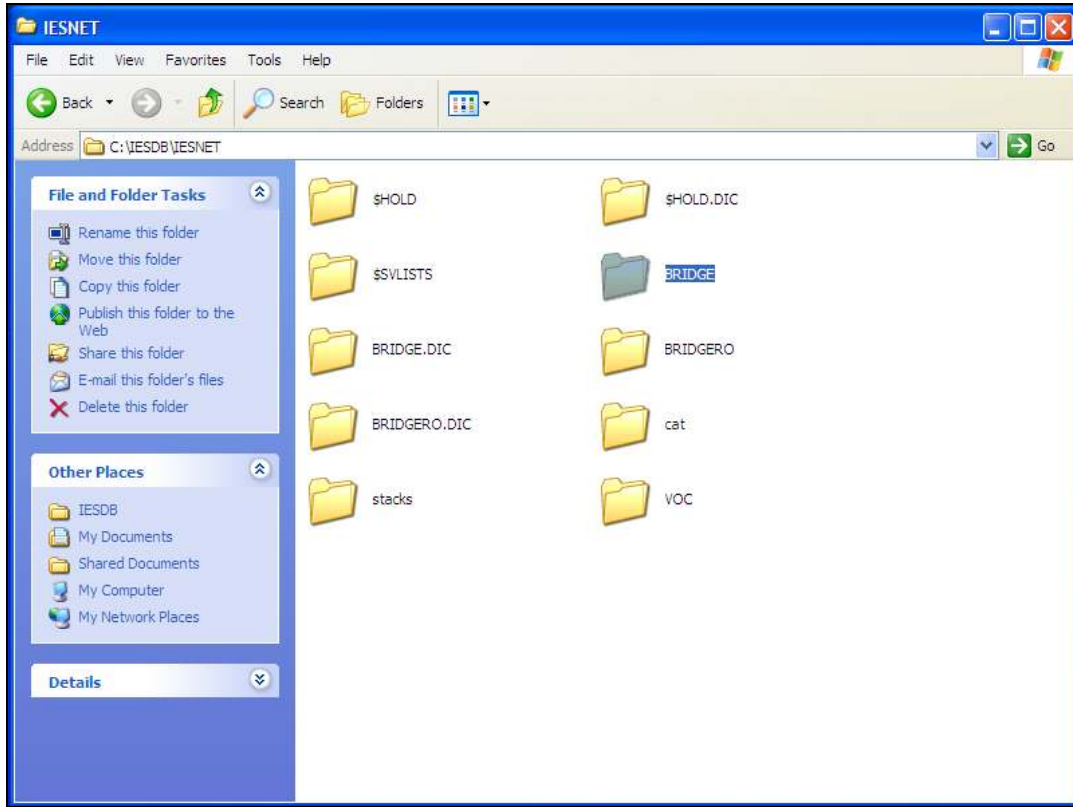


#### Slide 4

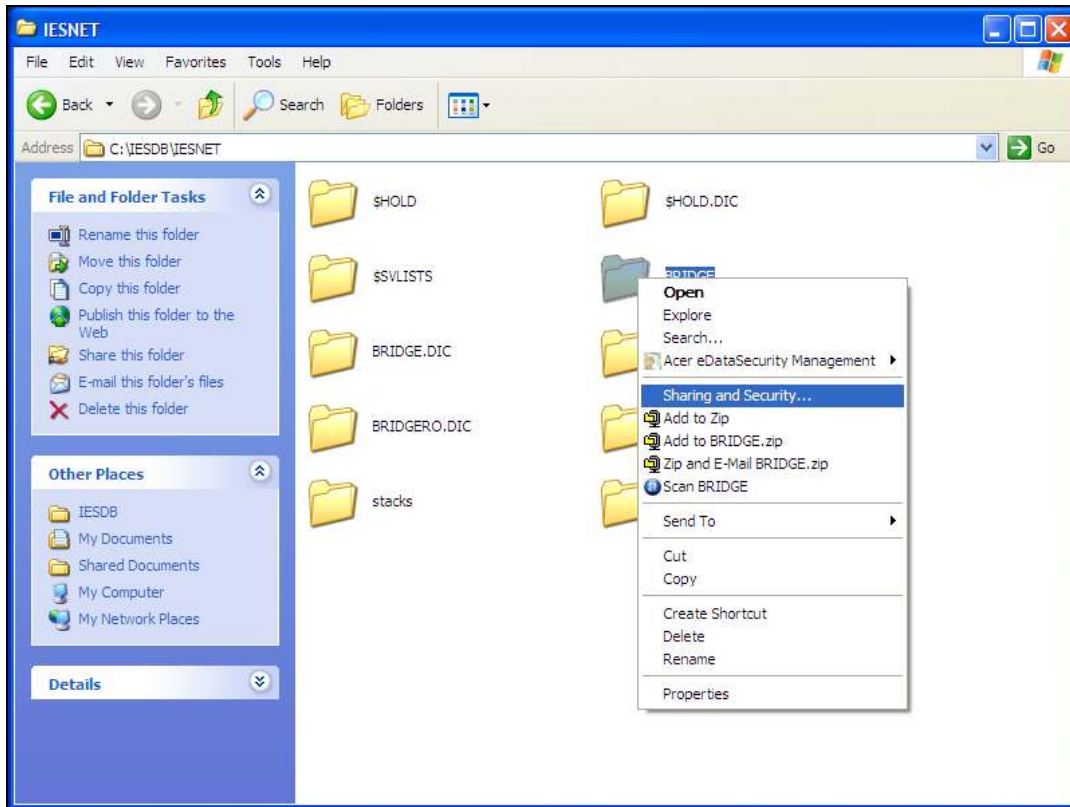
Slide notes: The BRIDGE folder shown here is used by all Users during Report execution, and must be fully shared, with full access.



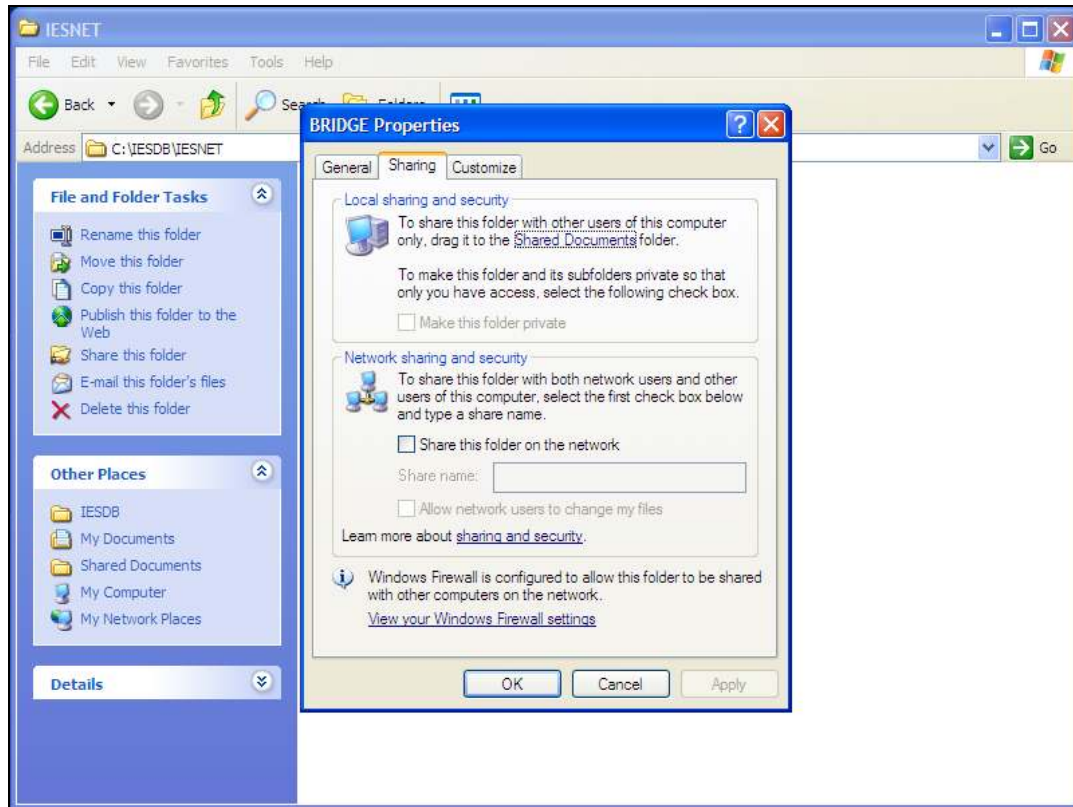
Slide 5  
Slide notes:



Slide 6  
Slide notes:

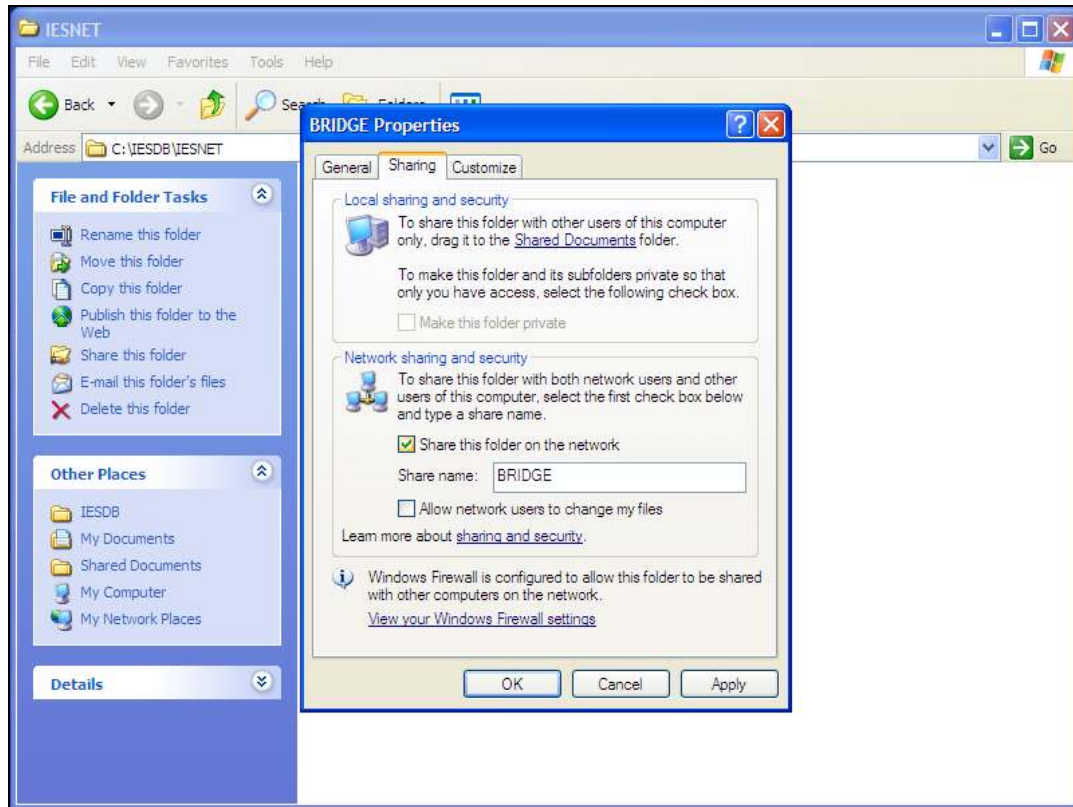


Slide 7  
Slide notes:



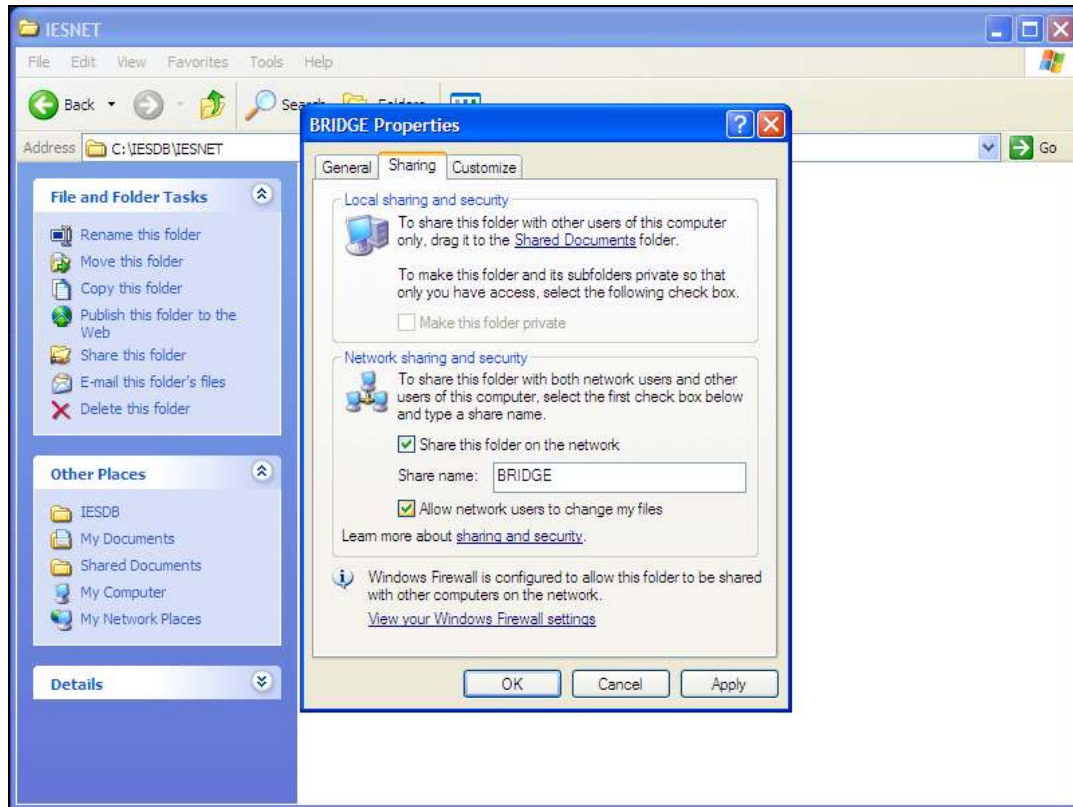
Slide 8  
Slide notes:





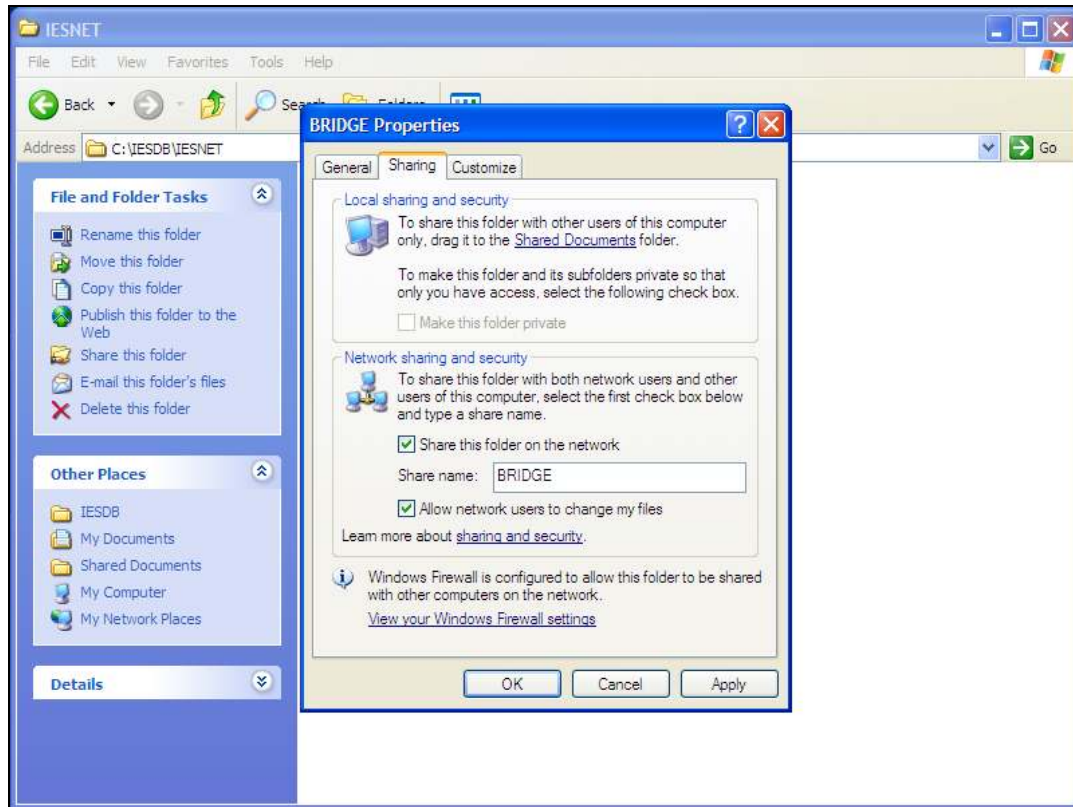
Slide 9

Slide notes:



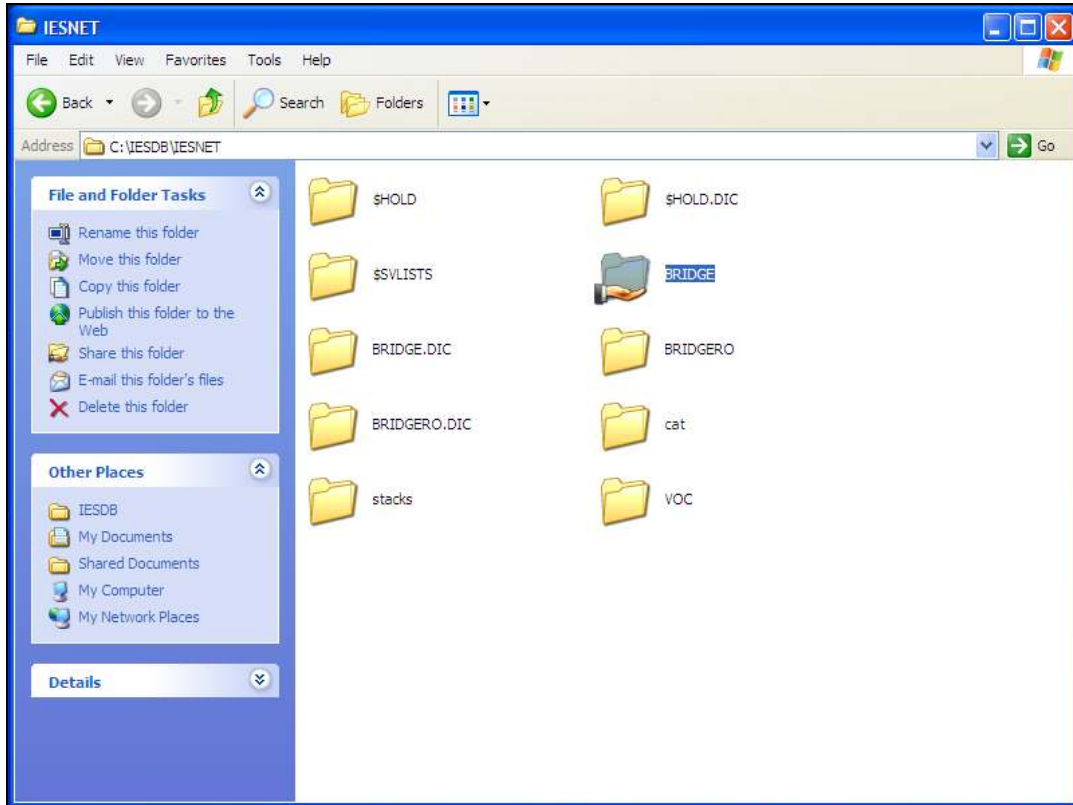
Slide 10

Slide notes: Network Users must be allowed to change the files.



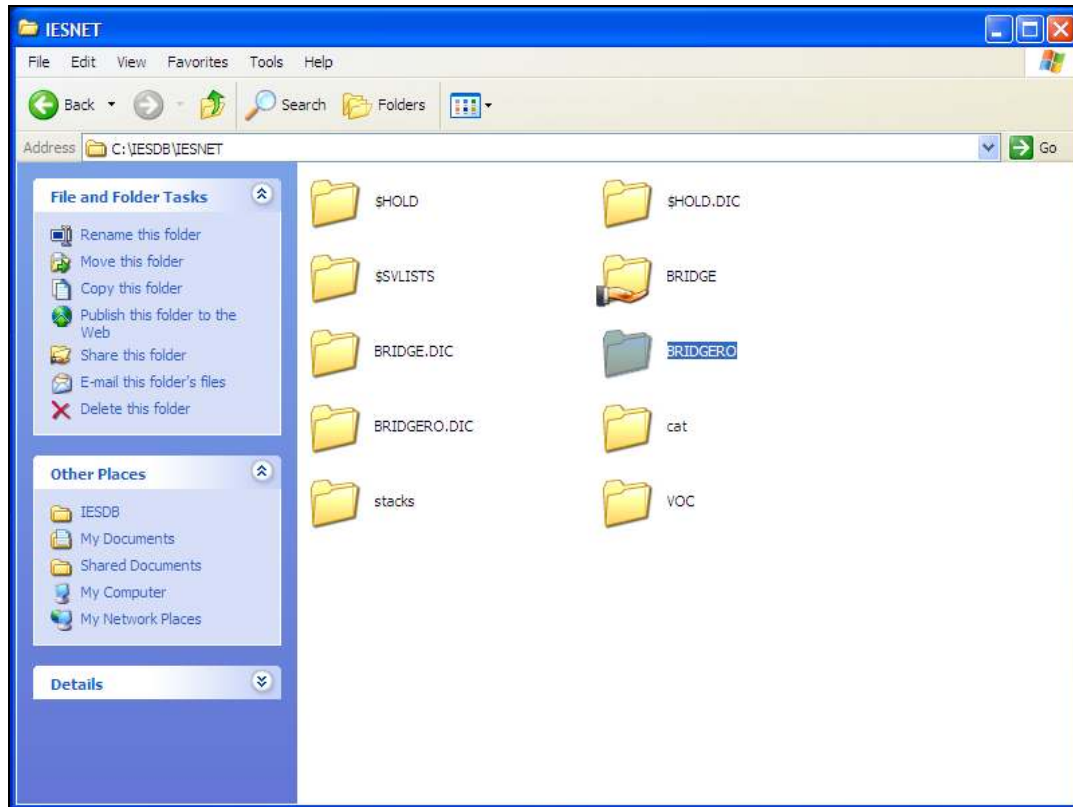
Slide 11

Slide notes: And the share name must be BRIDGE.



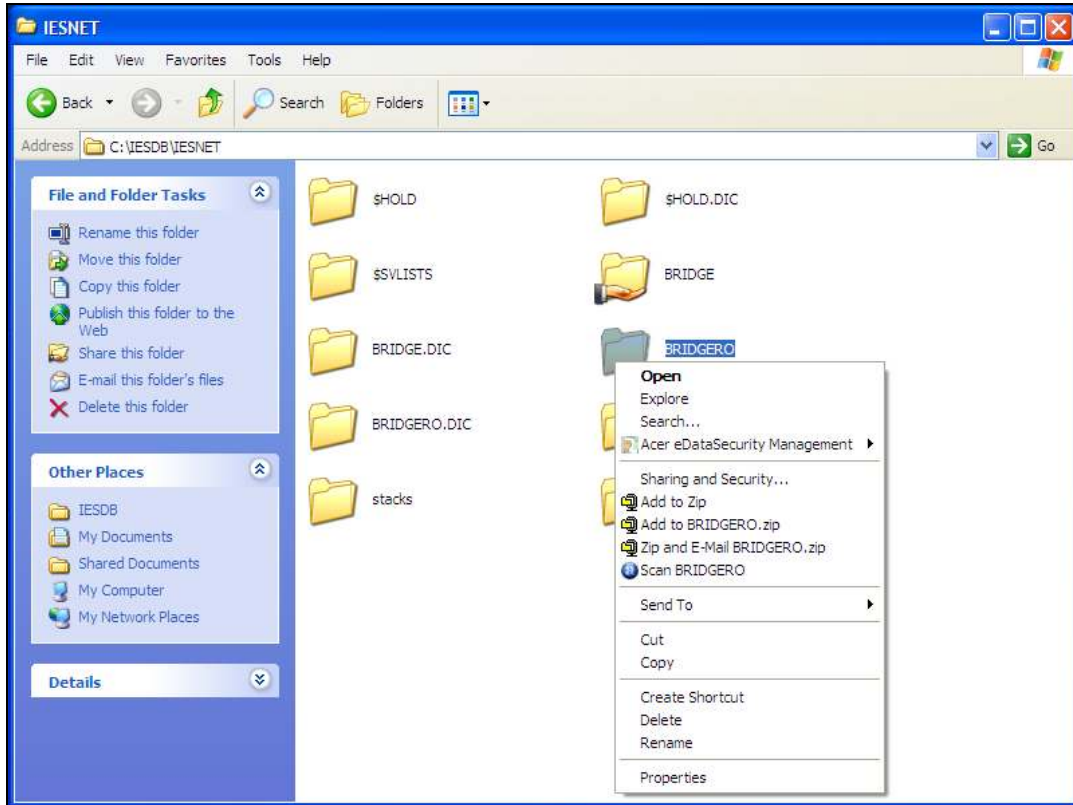
Slide 12

Slide notes:



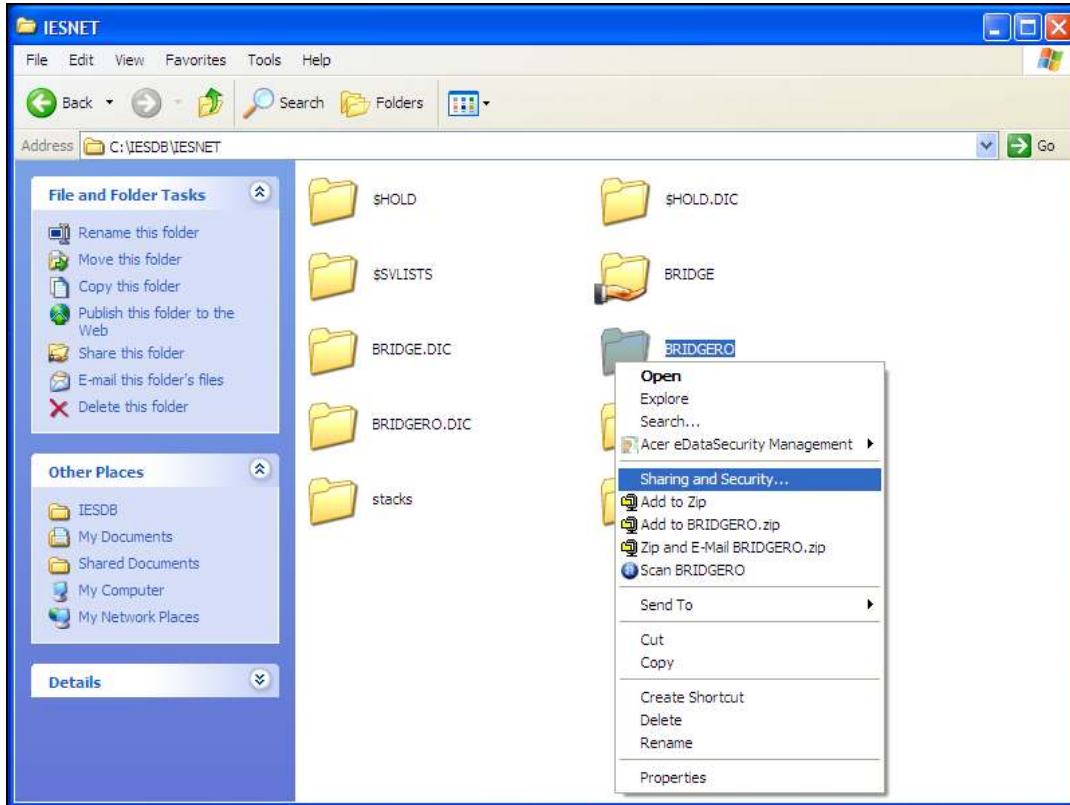
### Slide 13

Slide notes: The BRIDGERO folder is used for application images, like Stock, Personnel photos and other, and should be shared on a READ ONLY basis.



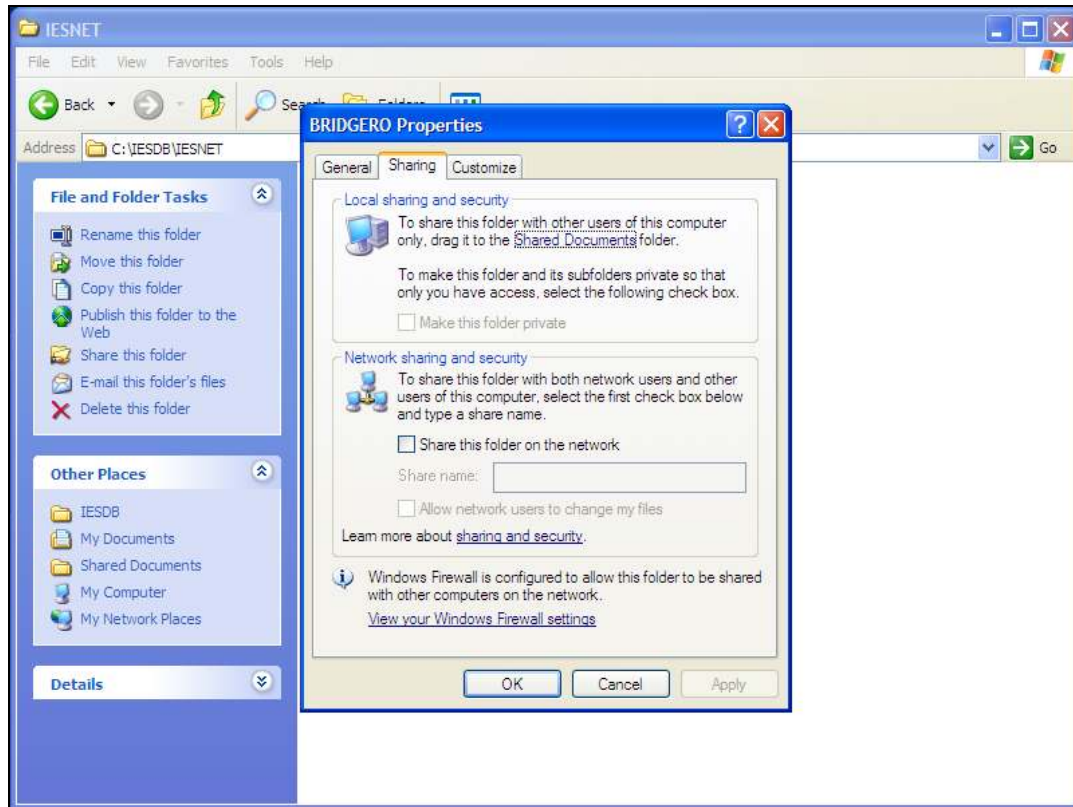
Slide 14

Slide notes:



Slide 15

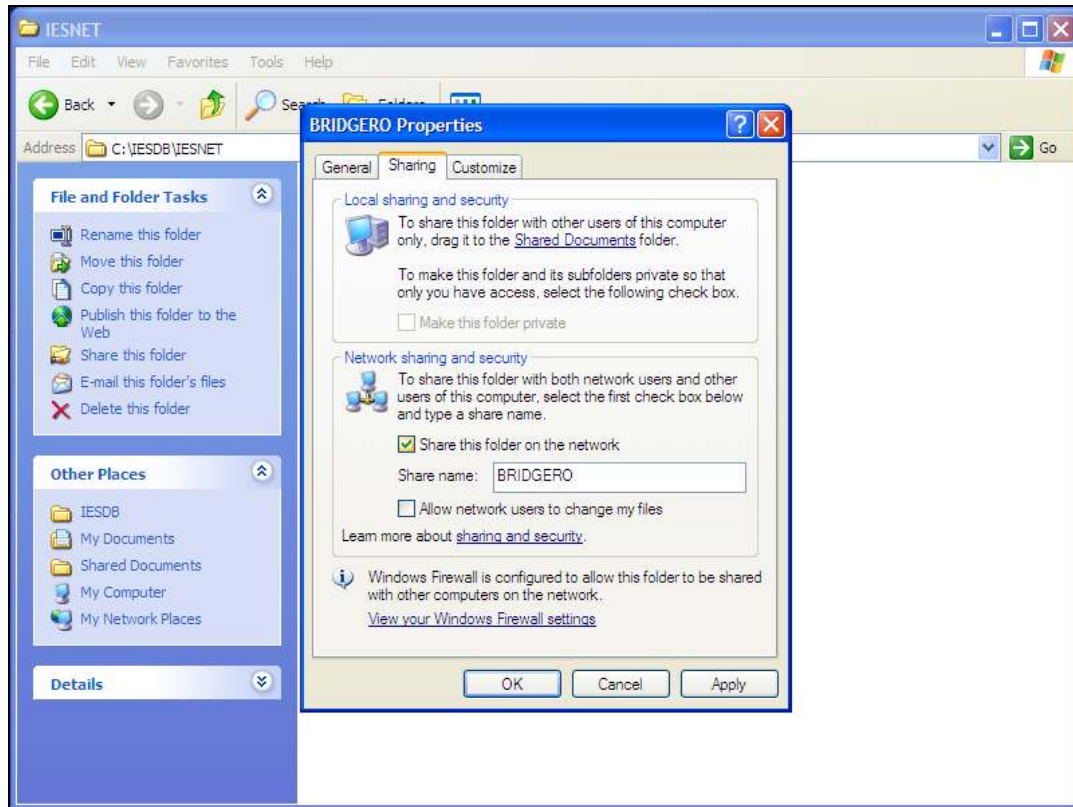
Slide notes:



Slide 16

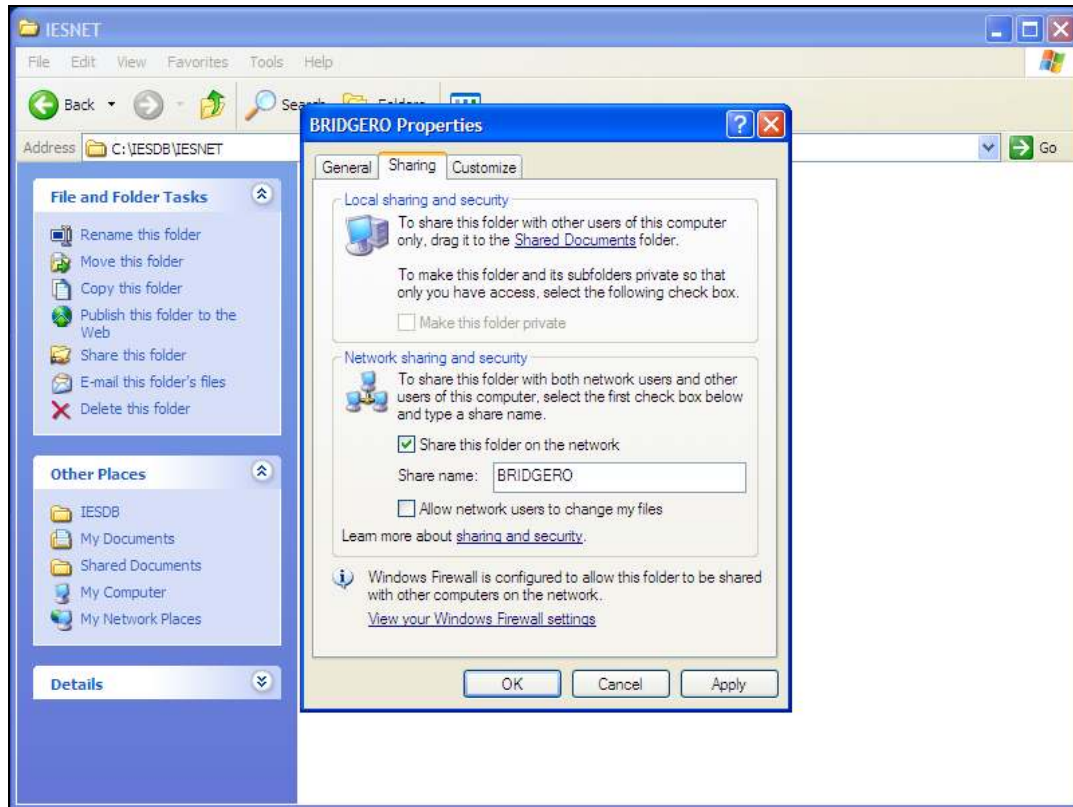
Slide notes:





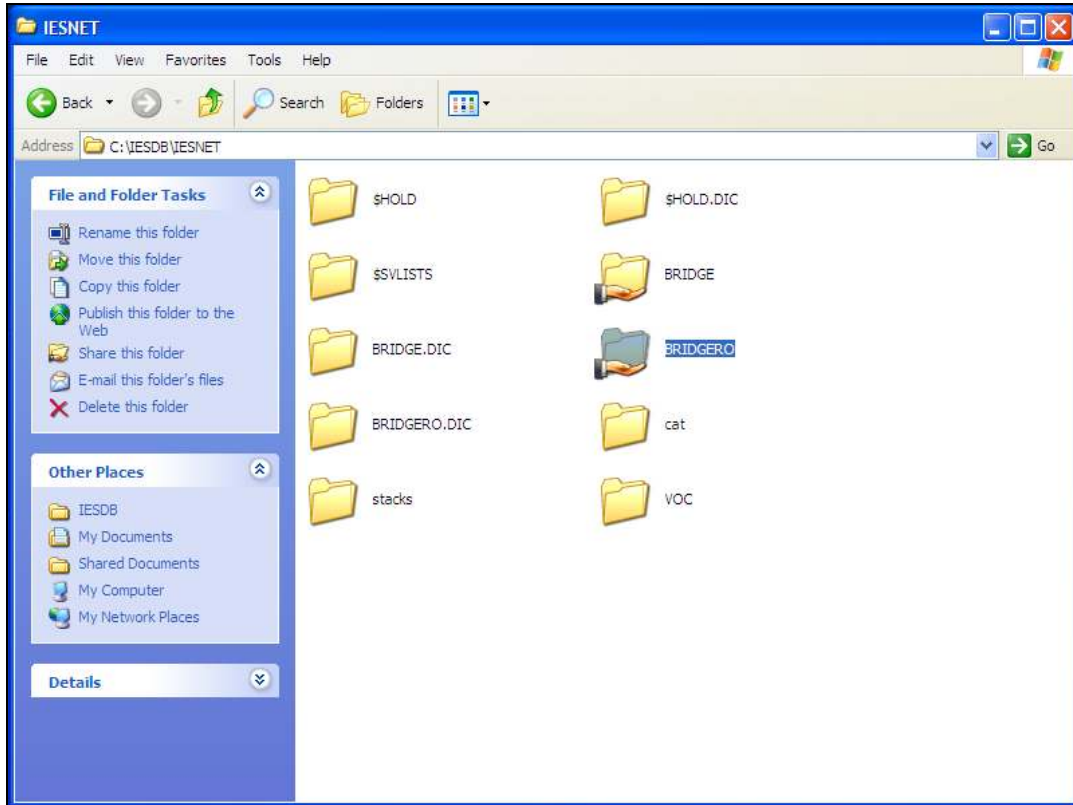
Slide 17

Slide notes: The share name must be BRIDGERO.

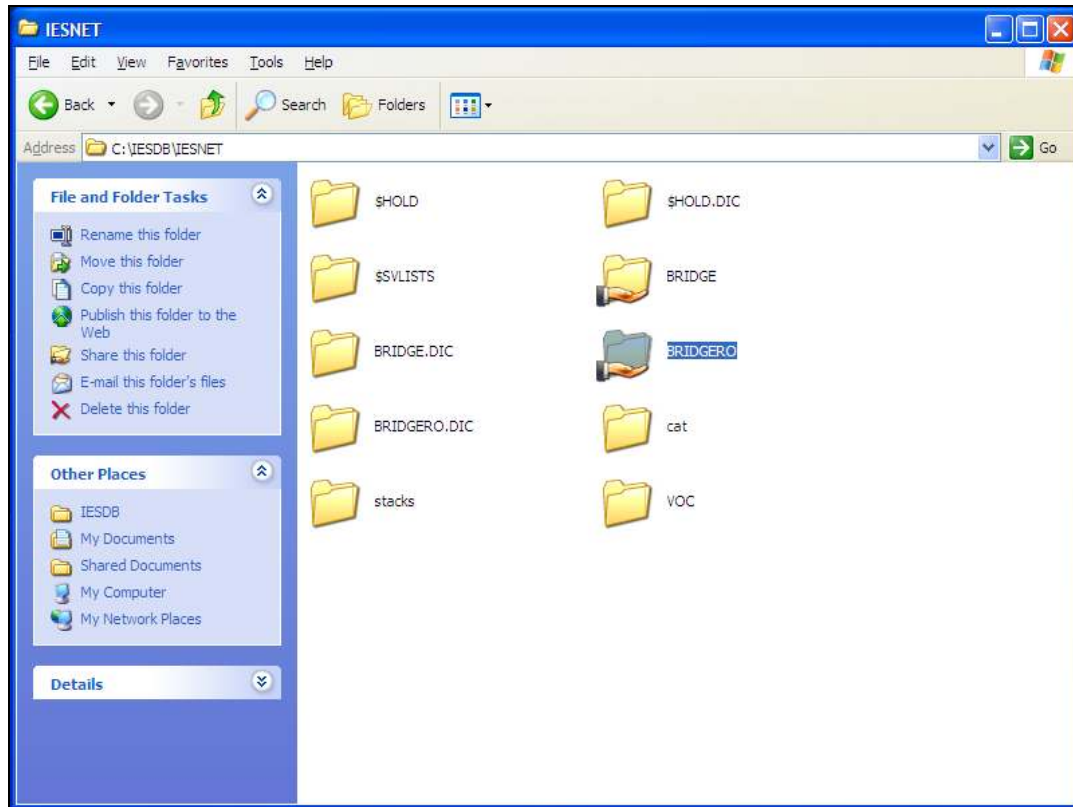


Slide 18

Slide notes:



Slide 19  
Slide notes:



Slide 20

Slide notes: The Sharing has now been properly set up.