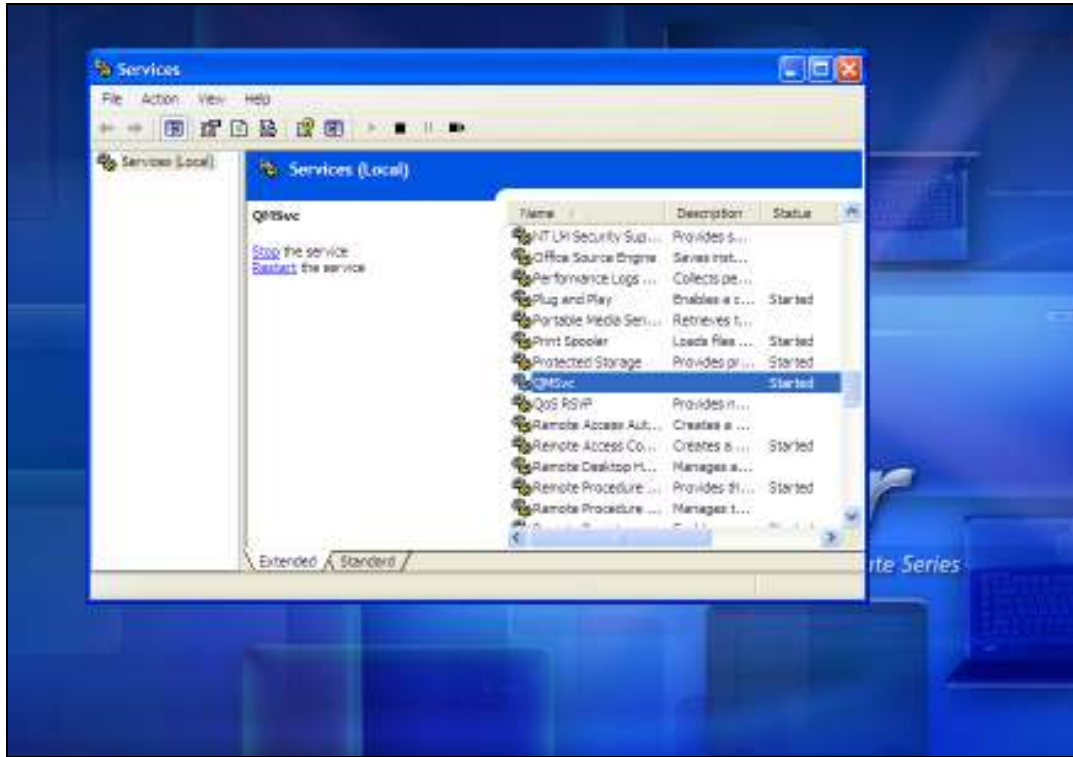


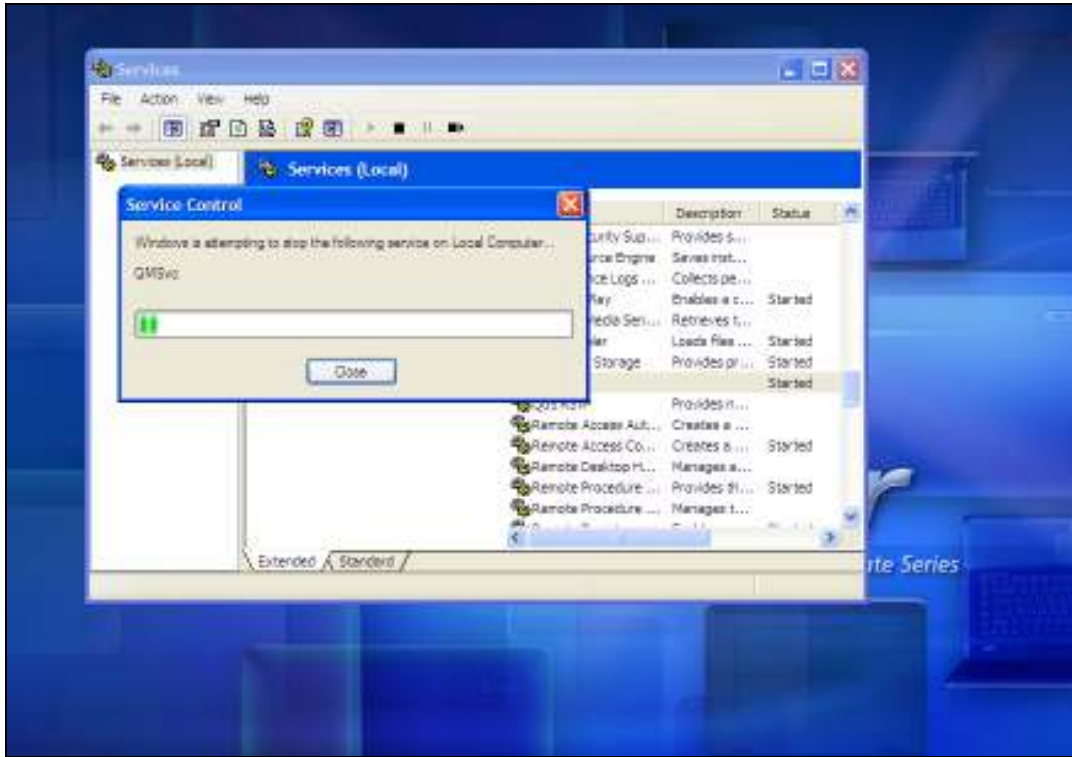
Slide 1

Slide notes: Whenever a procedure that we perform requires that the Database service be stopped (not running) or started (running), then we can just go to Services and stop or start the QMSvc. If this topic requires more explanation for you, then please see the tutorial for "QM Database Service, Start / Stop".



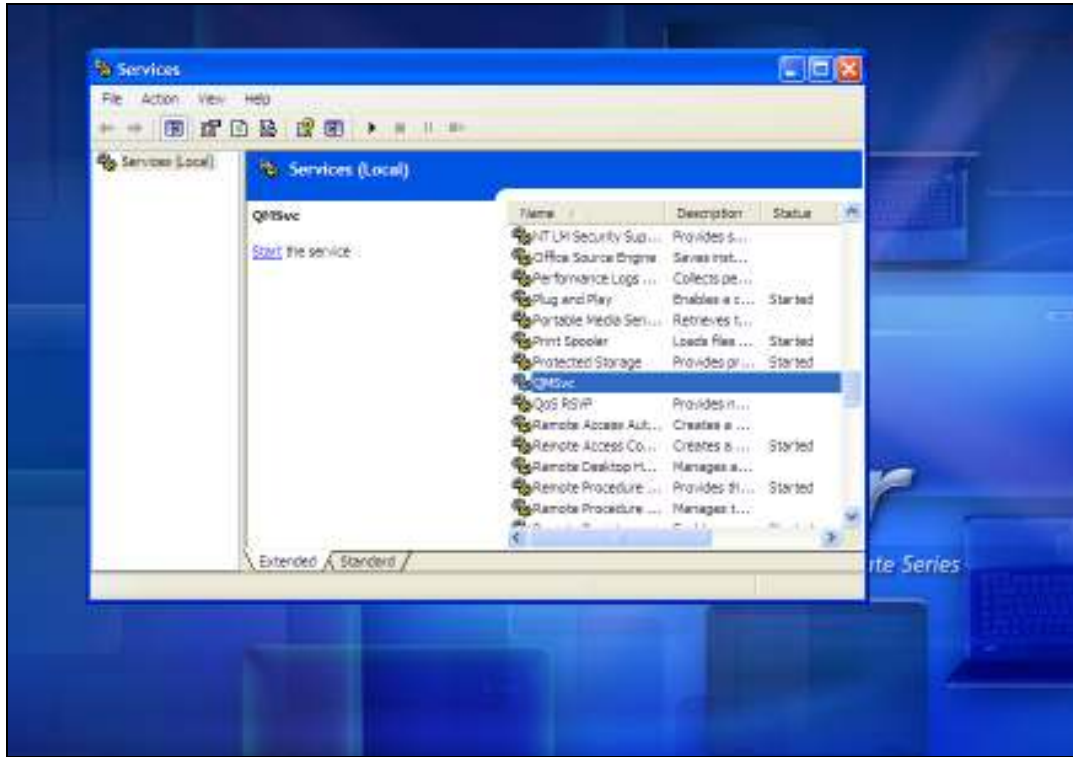
Slide 2

Slide notes: In this case, the service is currently running, and we can stop it.



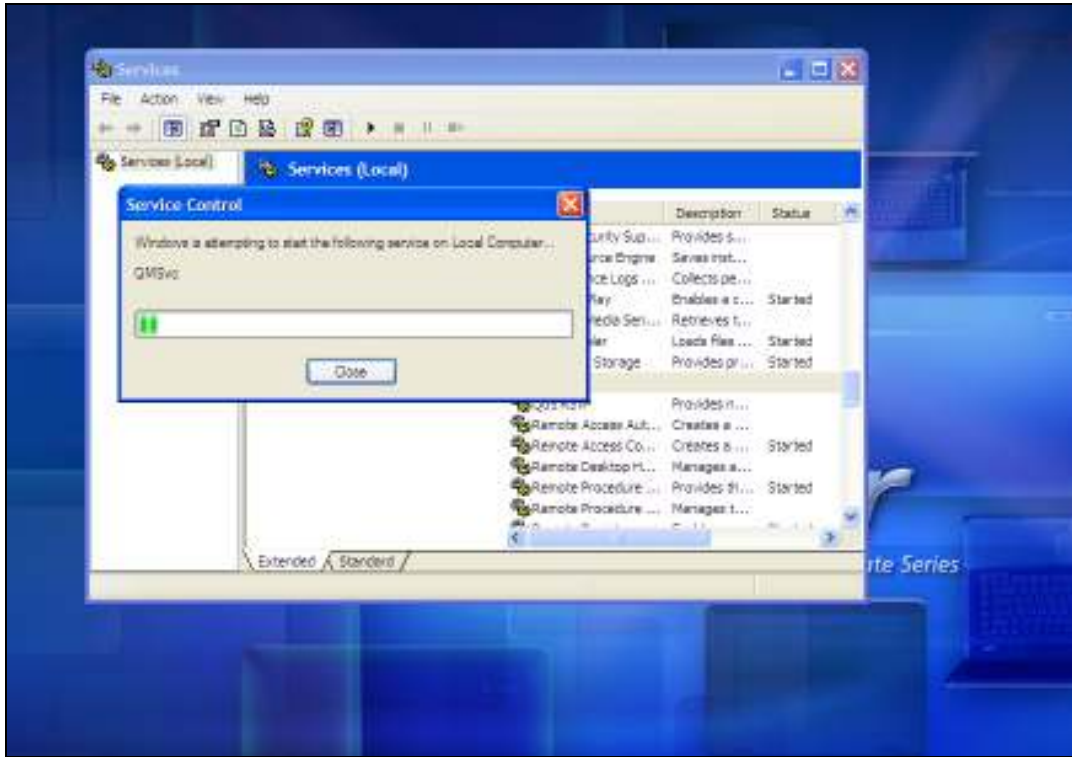
Slide 3

Slide notes:



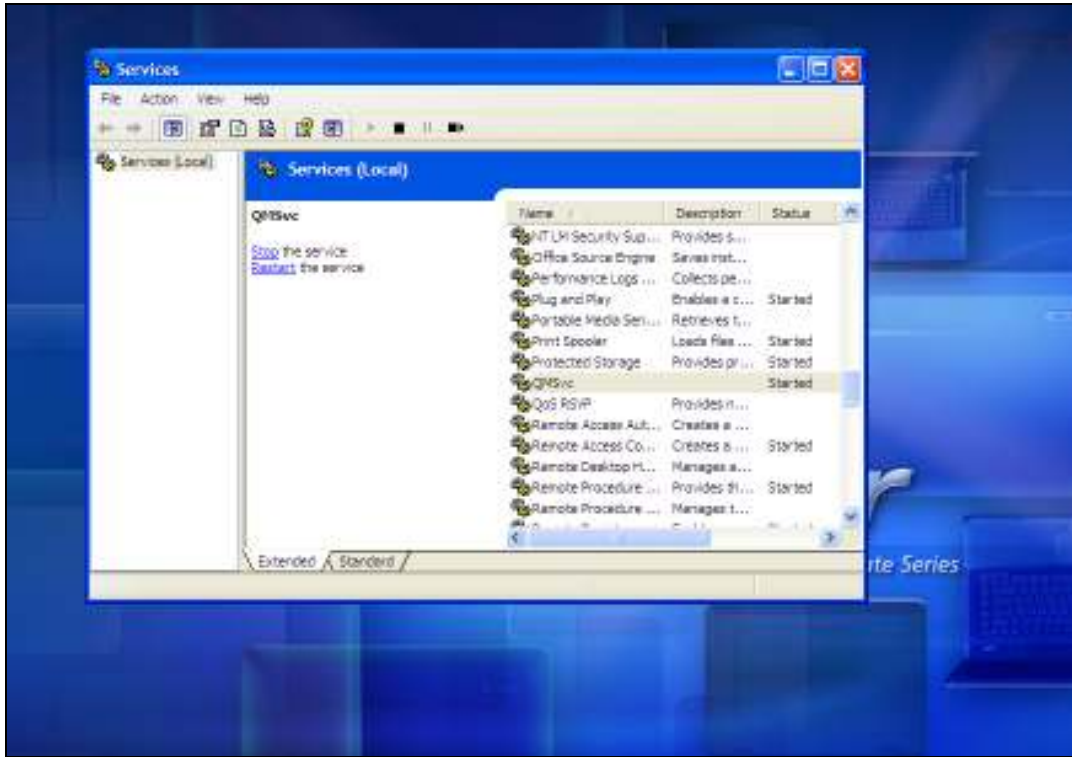
Slide 4

Slide notes: In this case, the service is stopped, and we can start it.



Slide 5

Slide notes:



Slide 6

Slide notes: