



Slide 1

Slide notes: When we 1st install IES, and also during any upgrade of IES, we must always perform the IESLOGIC setup routine.



Slide 2

Slide notes: We can use a Console Session and then log to the INFOLAB datamart.



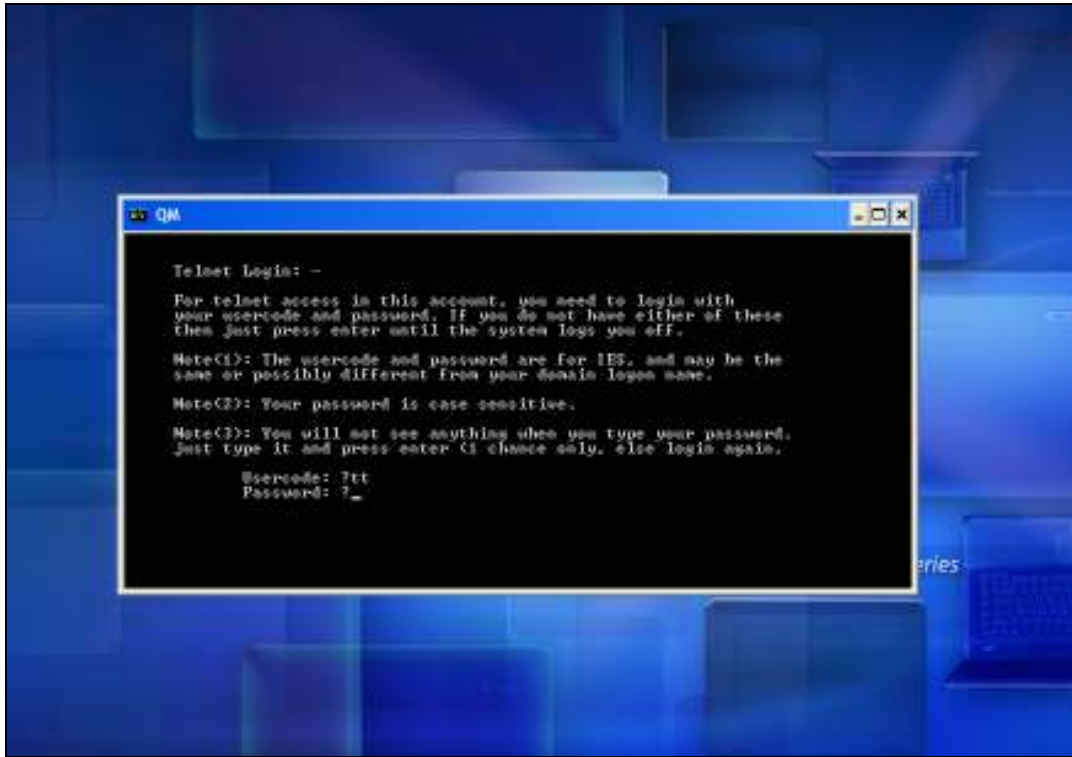
### Slide 3

Slide notes: In a brand new installation, before the IESLOGIC setup has ever been performed, we will not encounter a security gate, but in a system where IESLOGIC setup has already been performed before, the INFOLAB Datamart is protected and we need to log on with UserCode and Password credentials. The UserCode we use here may be 'dm' in a new system, with password = 'password' in lower case, or in a system where the 'dm' user has already been given a new password we will use that password or else we will be using a UserCode that has access to the TCL option in IES.



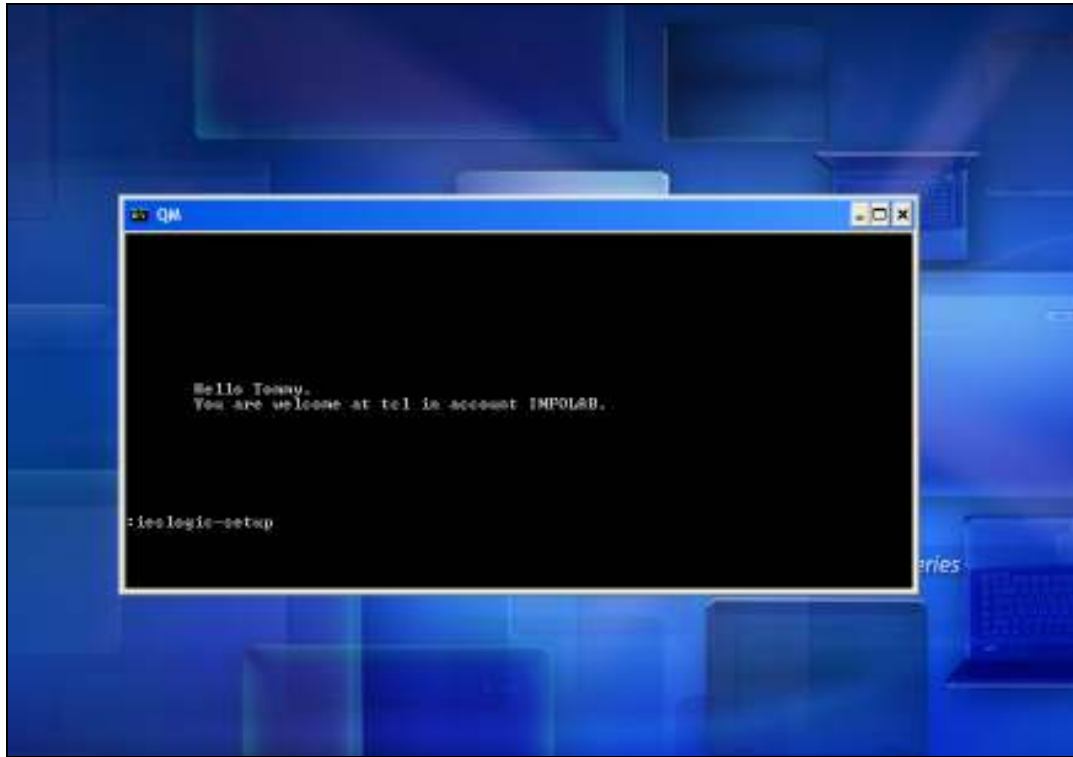
Slide 4

Slide notes:



Slide 5

Slide notes: Next, we issue the command 'ieslogic-setup' as shown here.



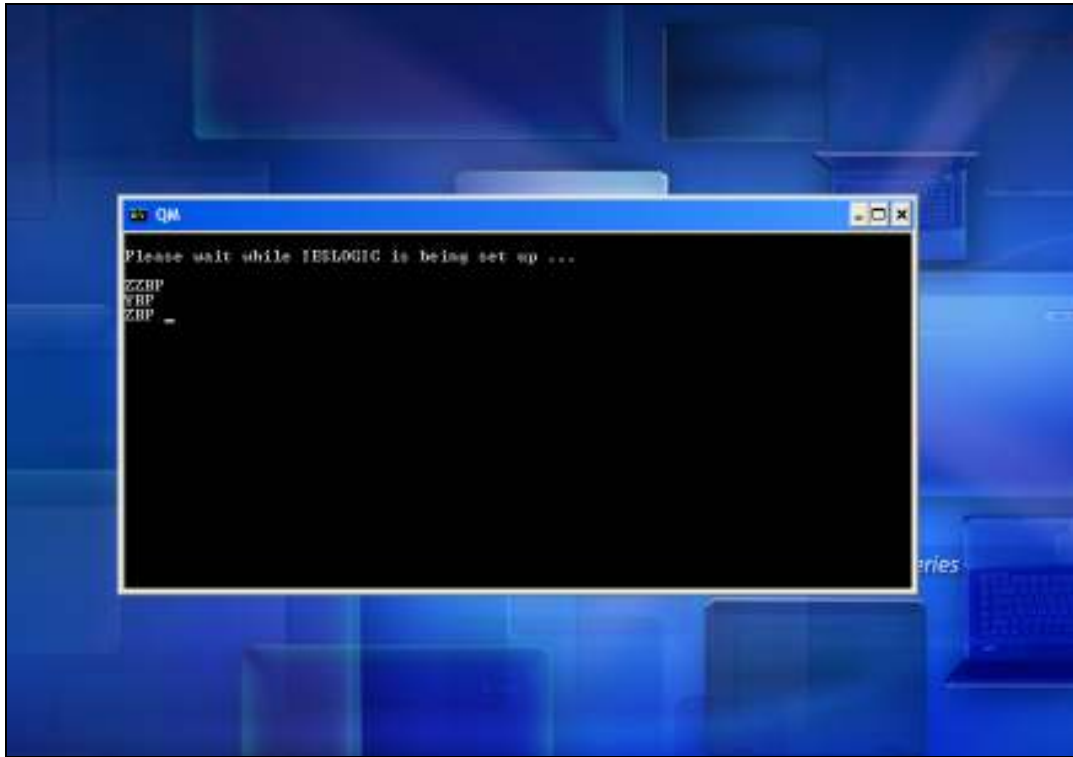
Slide 6

Slide notes:



Slide 7

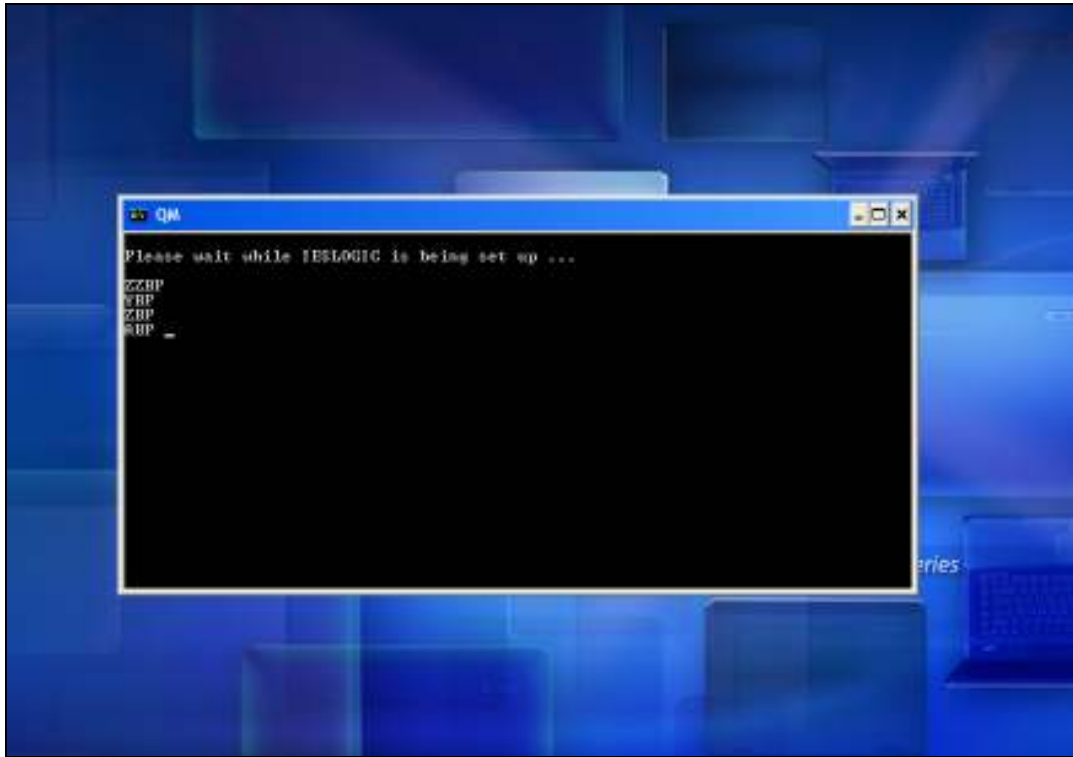
Slide notes: The system will now perform the IESLOGIC set up.



Slide 8

Slide notes:





Slide 9

Slide notes:



Slide 10

Slide notes:



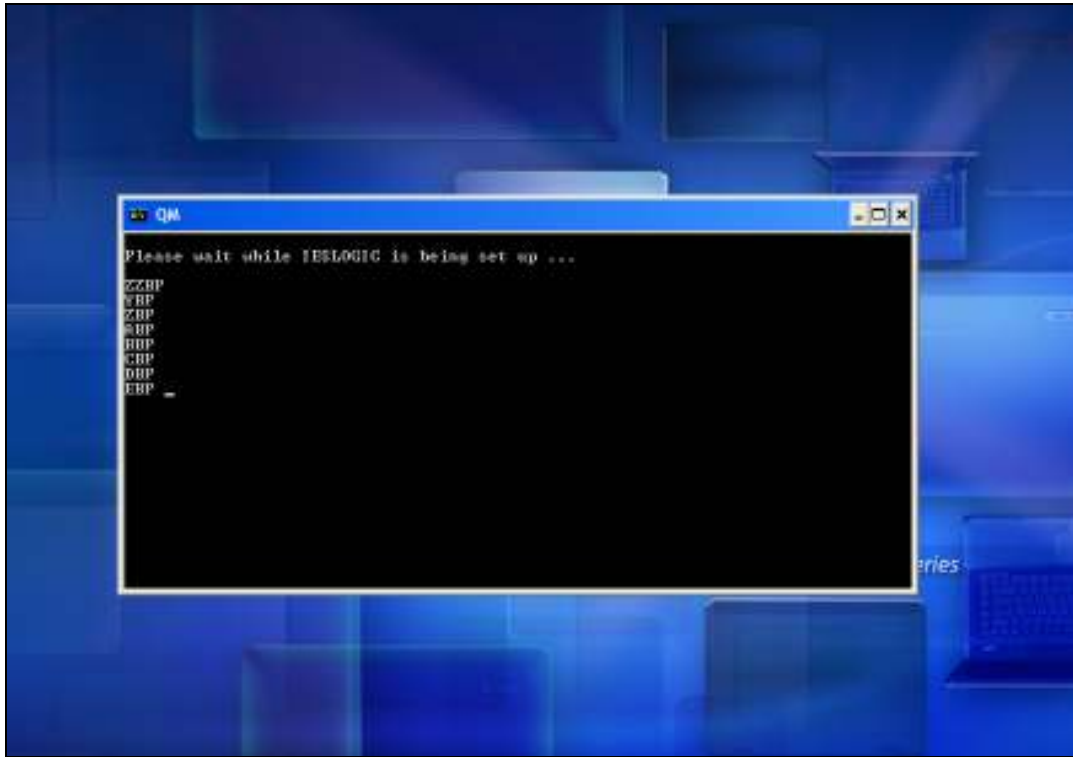
Slide 11

Slide notes:



Slide 12

Slide notes:



Slide 13

Slide notes:

A screenshot of a terminal window titled 'QM' on a blue desktop background. The terminal displays the following text:

```
Please wait while IESLOGIC is being set up ...  
ZZBP  
YBP  
ZBP  
ABP  
BDP  
CDP  
ODP  
EBP  
Finished ...  
:
```

Slide 14

Slide notes: When the 'finished' indicator appears, the process is complete and we can close the session with the 'off' command.