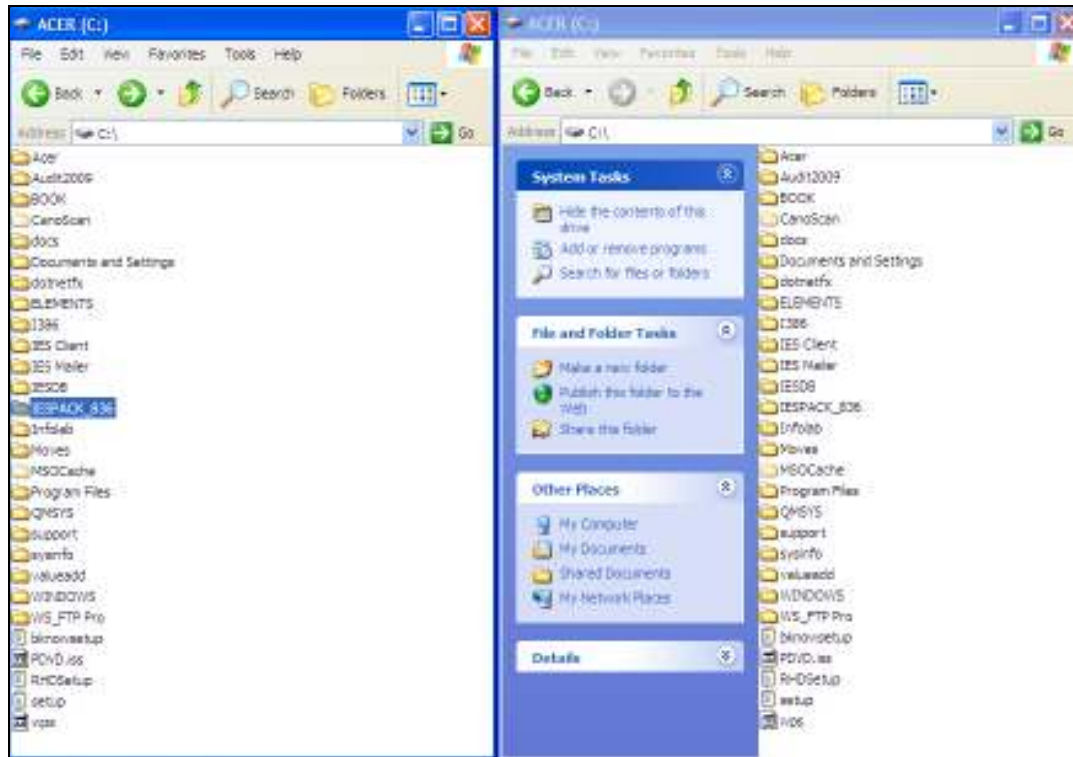


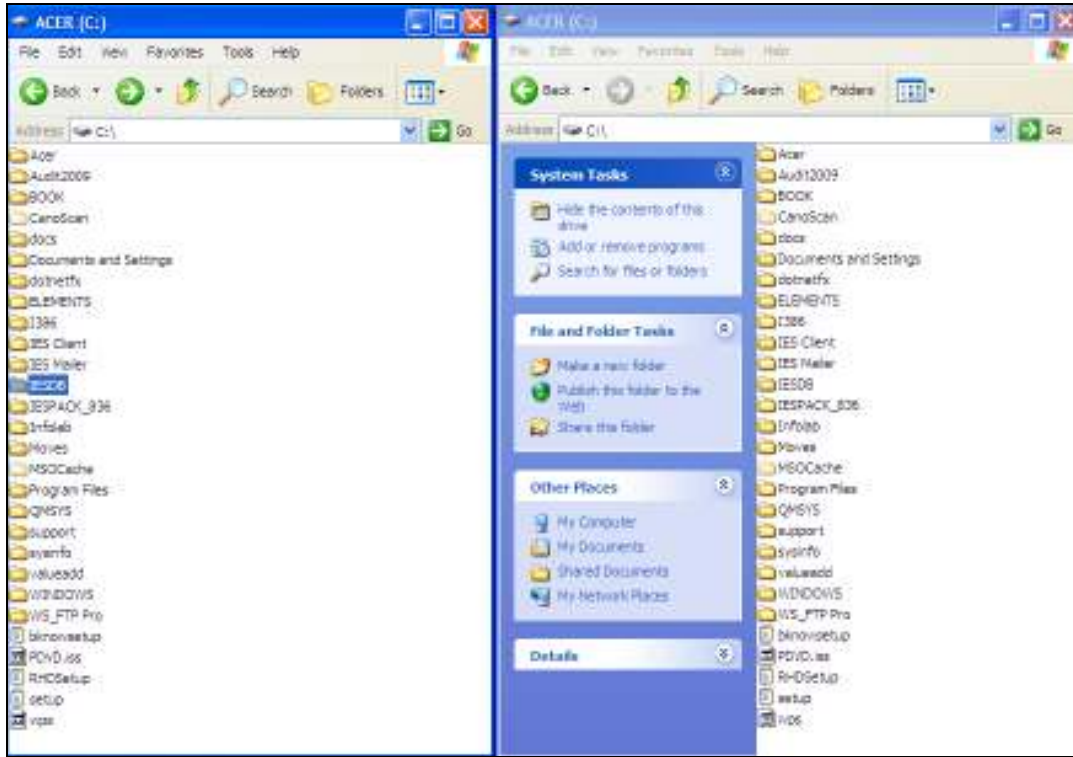
Slide 1

Slide notes: During a new installation of IES, after we have registered and created the initial IES Datamarts in the QMSYS account, and after we have created the IESDB folder, we will move the downloaded IES Datamarts from the IESPACK folder into the IESDB folder.



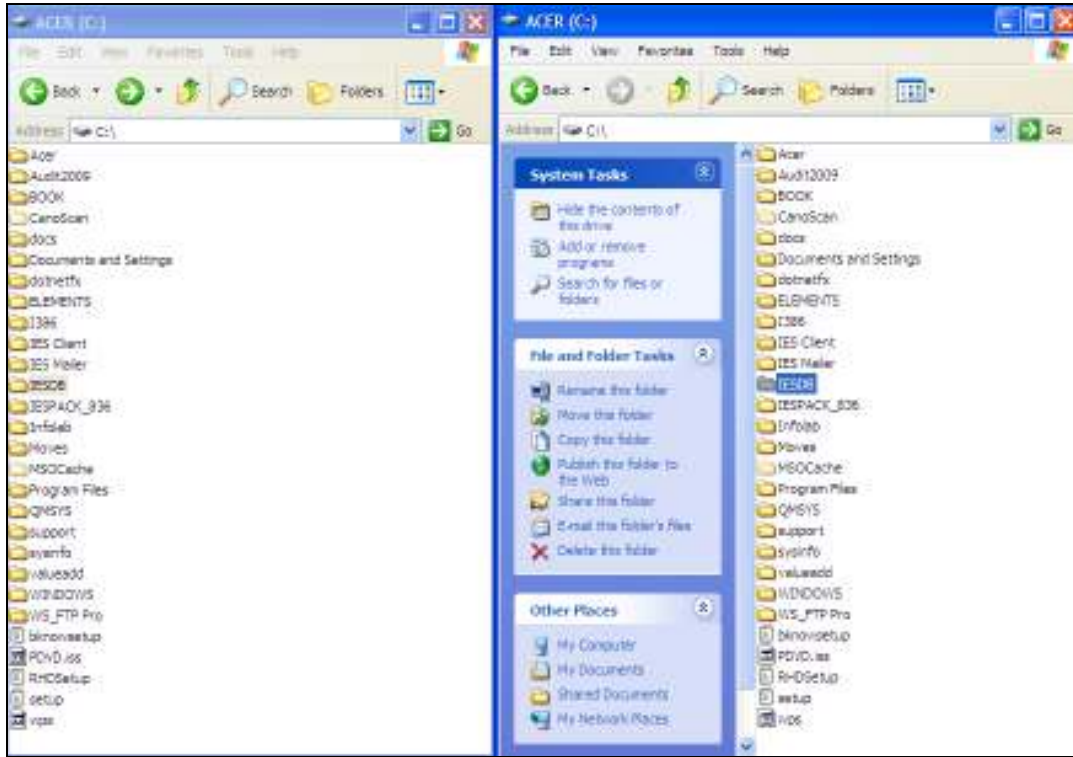
Slide 2

Slide notes: So here we see that the IESDB folder and the IESPACK folder for release 836 are both present.



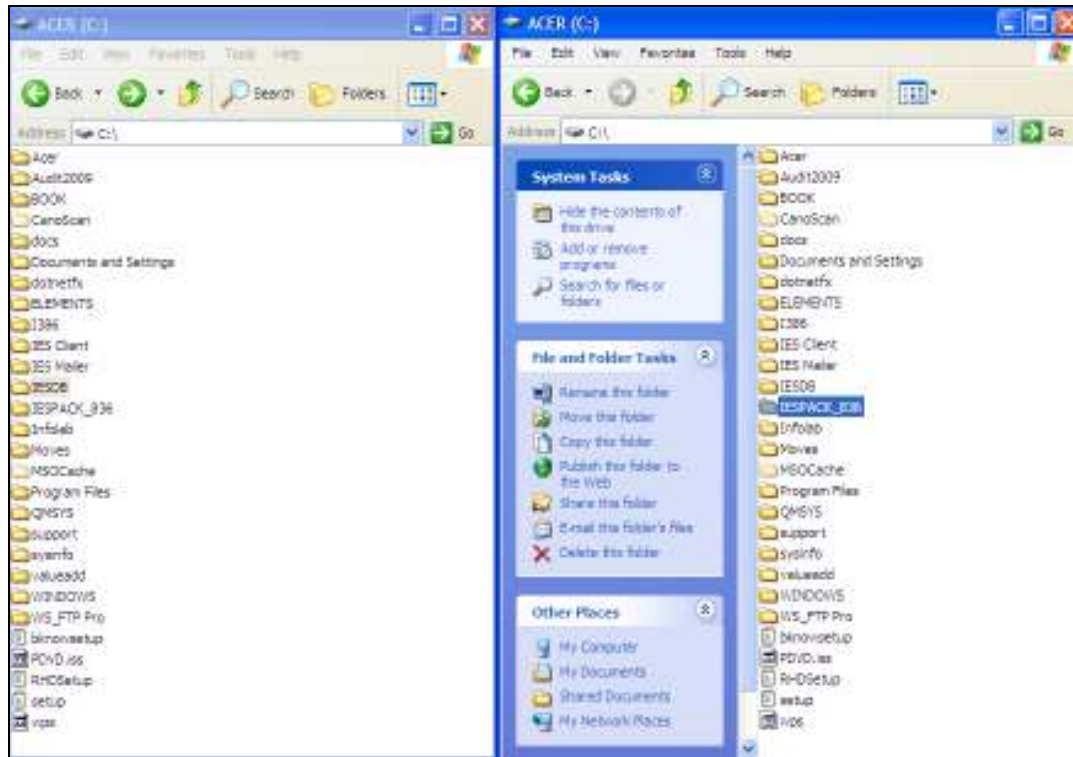
Slide 3

Slide notes:



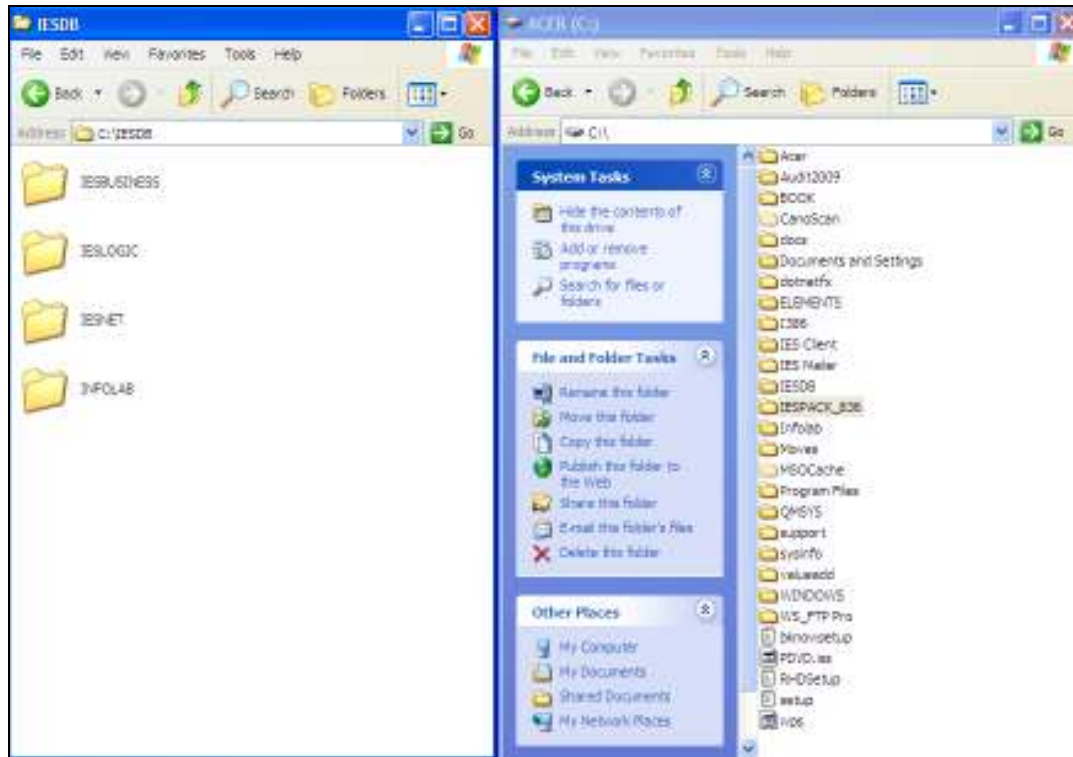
Slide 4

Slide notes:



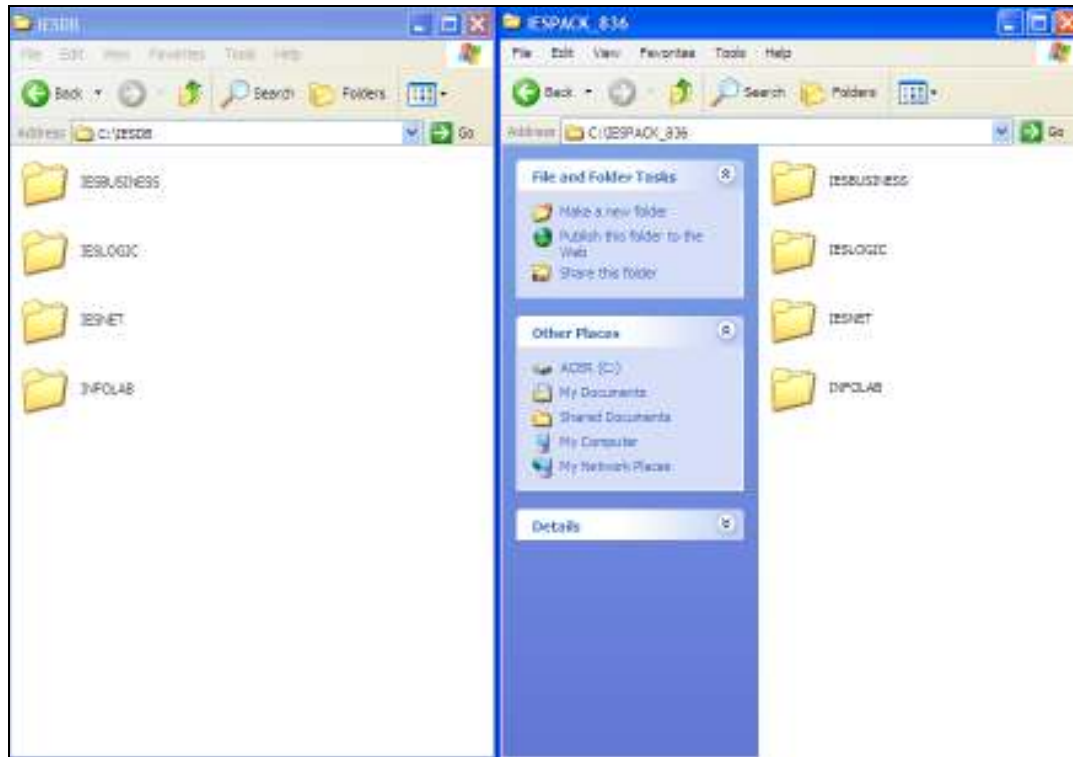
Slide 5

Slide notes: We are using 2 Explorer windows to show what we want to do here.



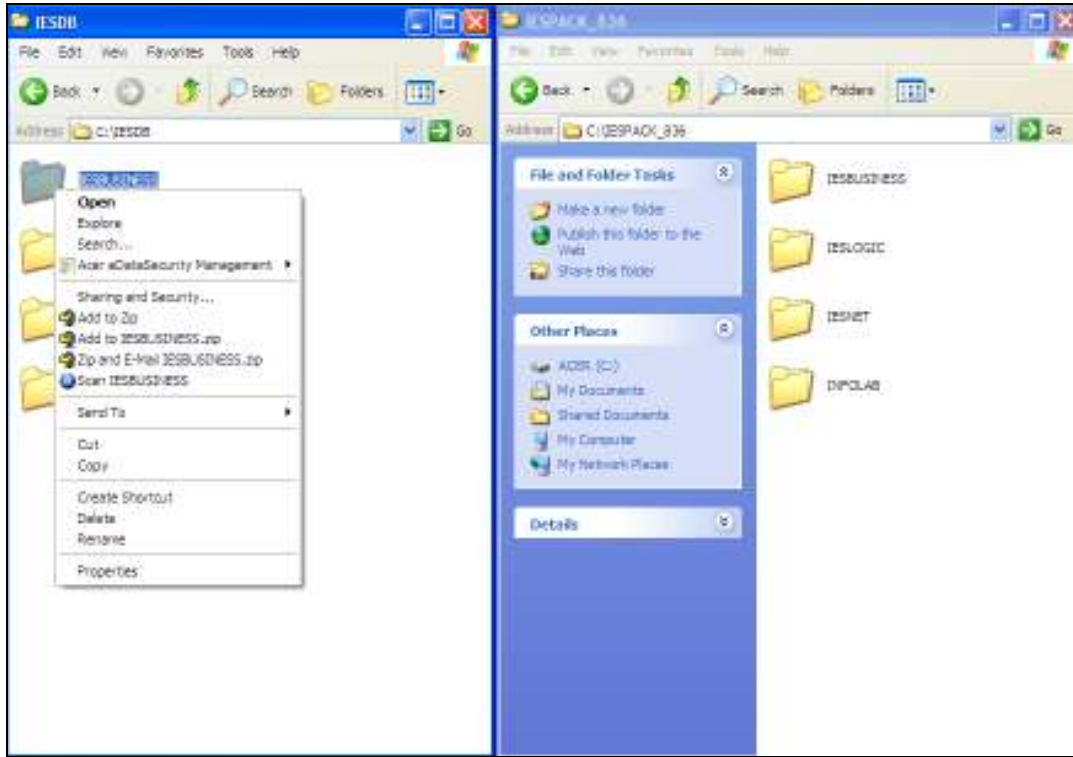
Slide 6

Slide notes: In the IESDB folder we currently have 4 Datamarts, but they are newly created and they are empty, i.e. without data.



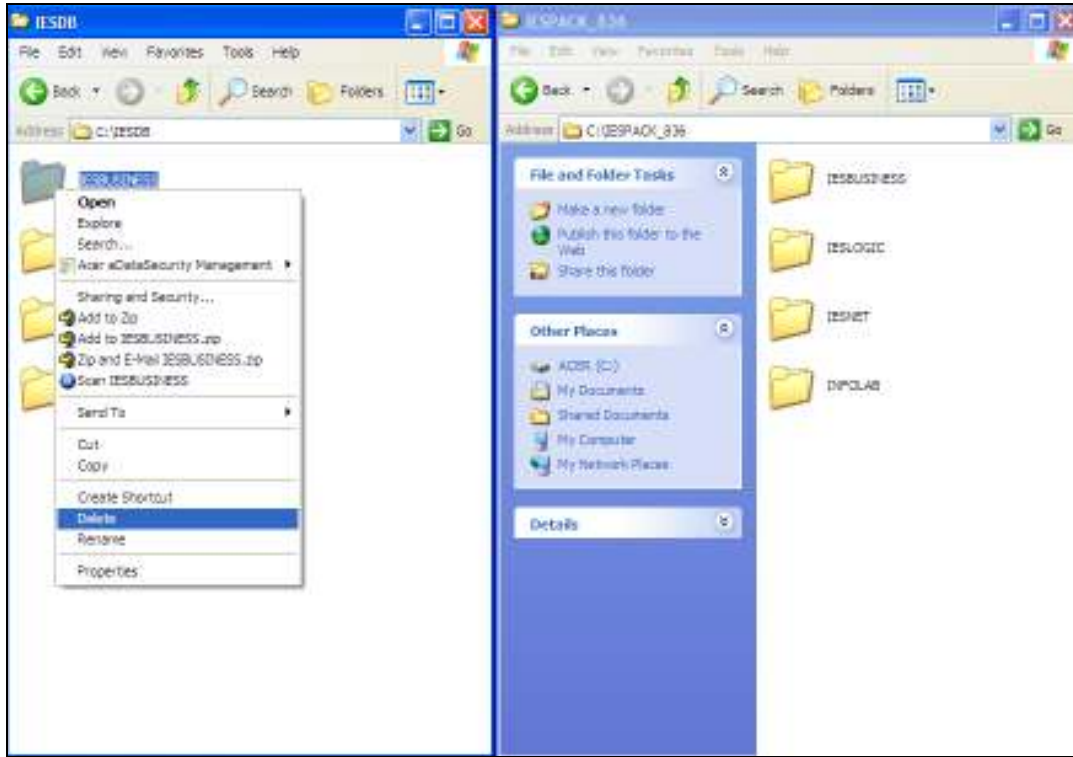
Slide 7

Slide notes: And in the IESPACK folder we have the same 4 Datamarts, but these are the Datamarts that contain data, and we wish to install these Datamarts by moving them into the IESDB folder.



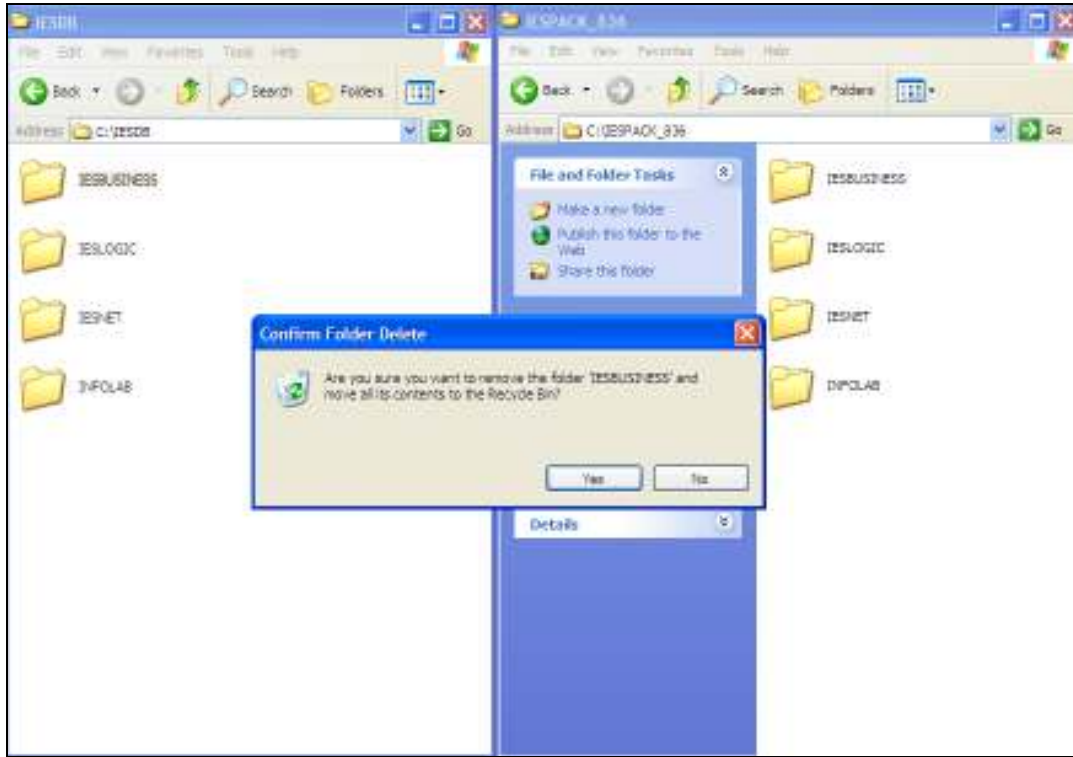
Slide 8

Slide notes: So we 1st delete and remove the empty Datamarts from the IESDB folder.



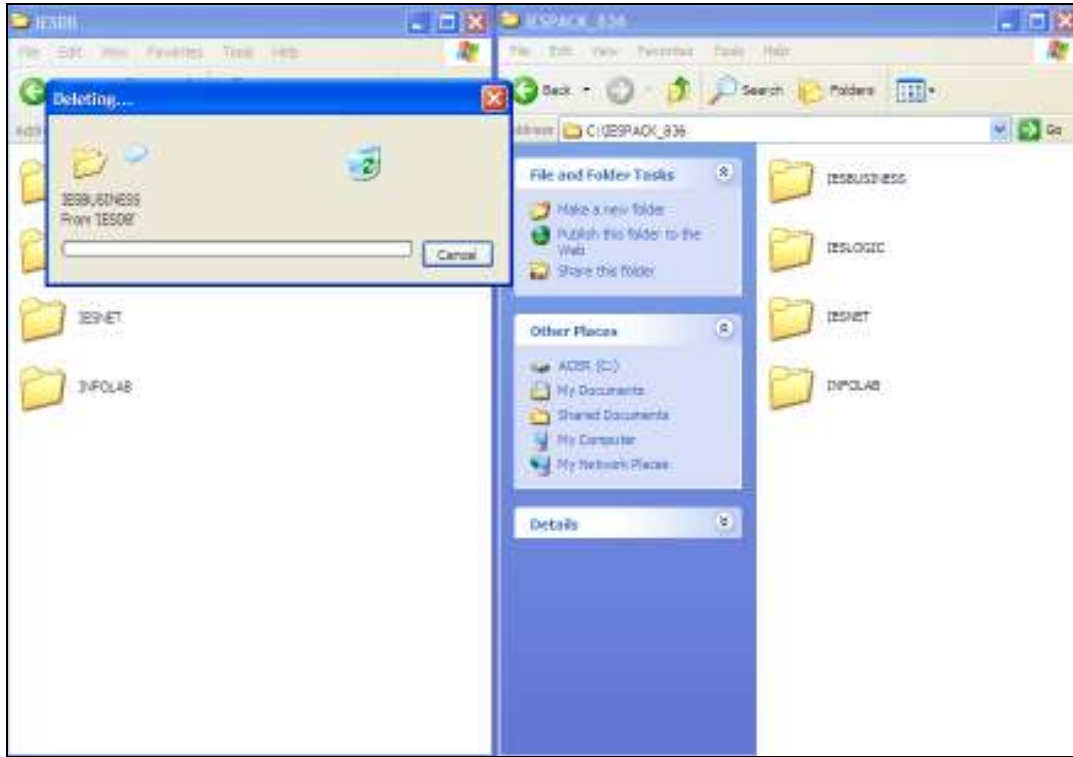
Slide 9

Slide notes:



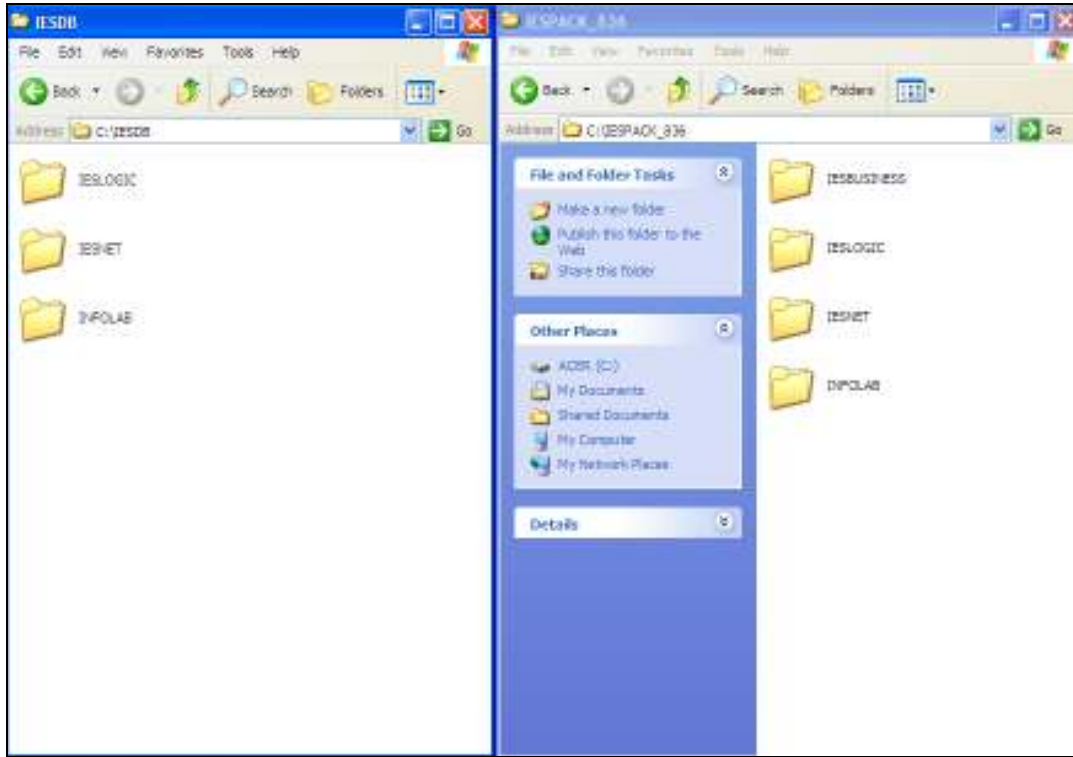
Slide 10

Slide notes:



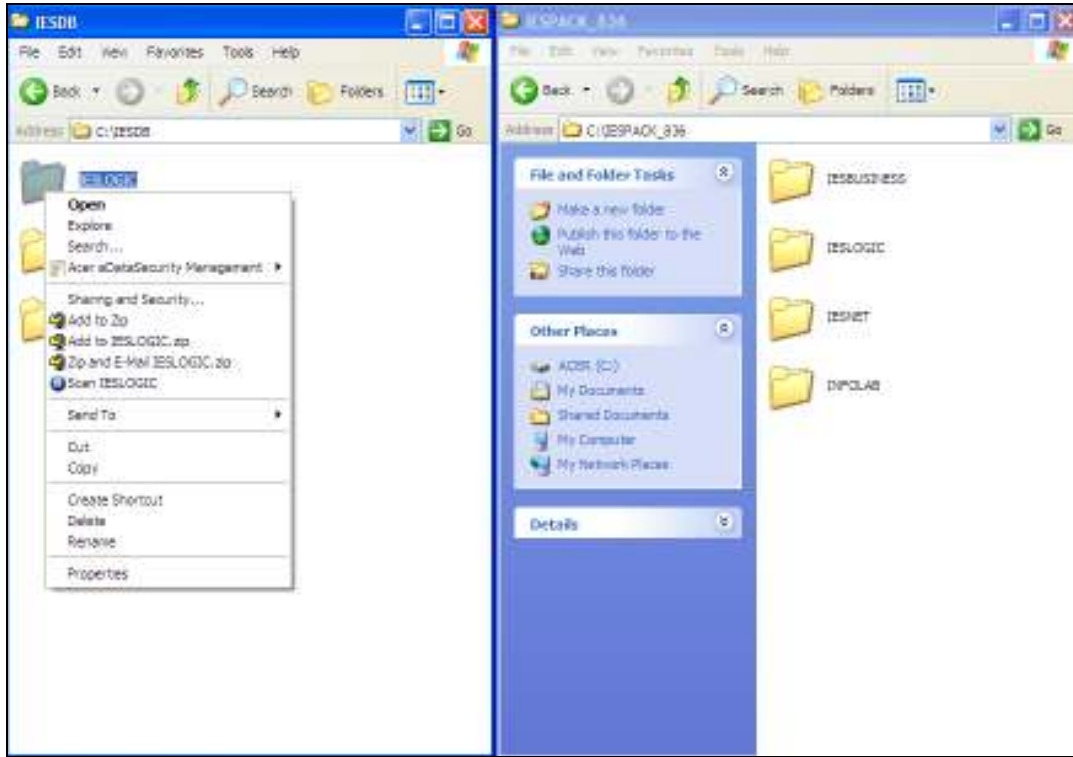
Slide 11

Slide notes:



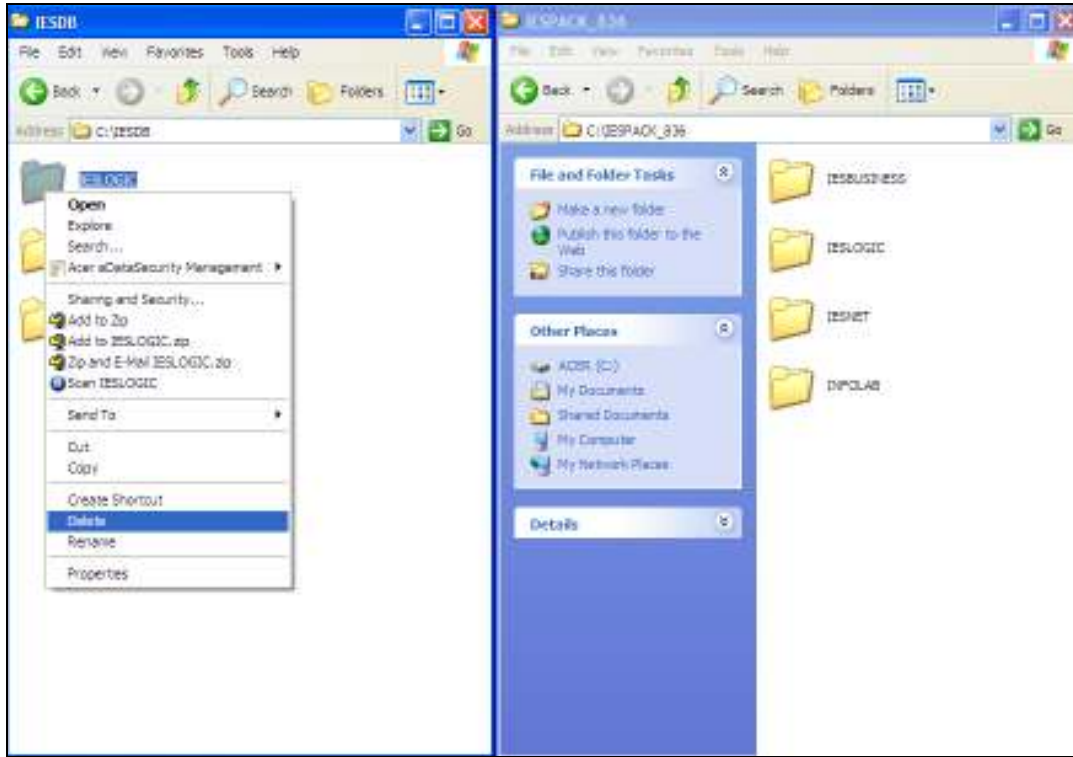
Slide 12

Slide notes:



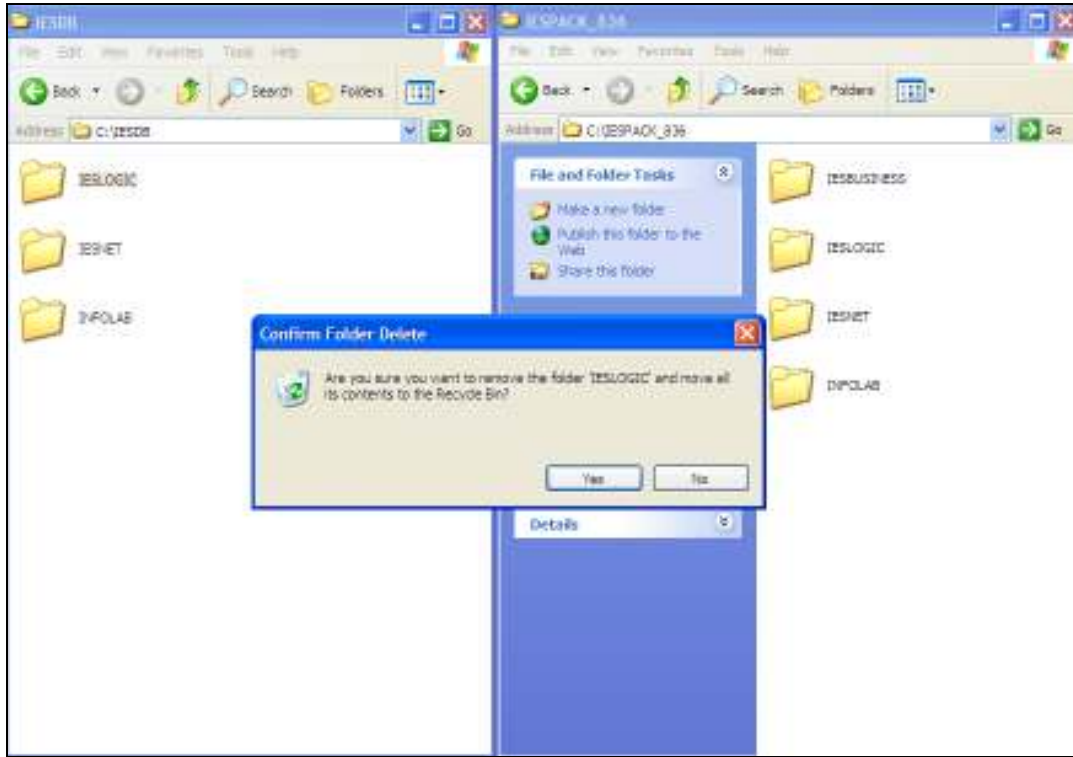
Slide 13

Slide notes:



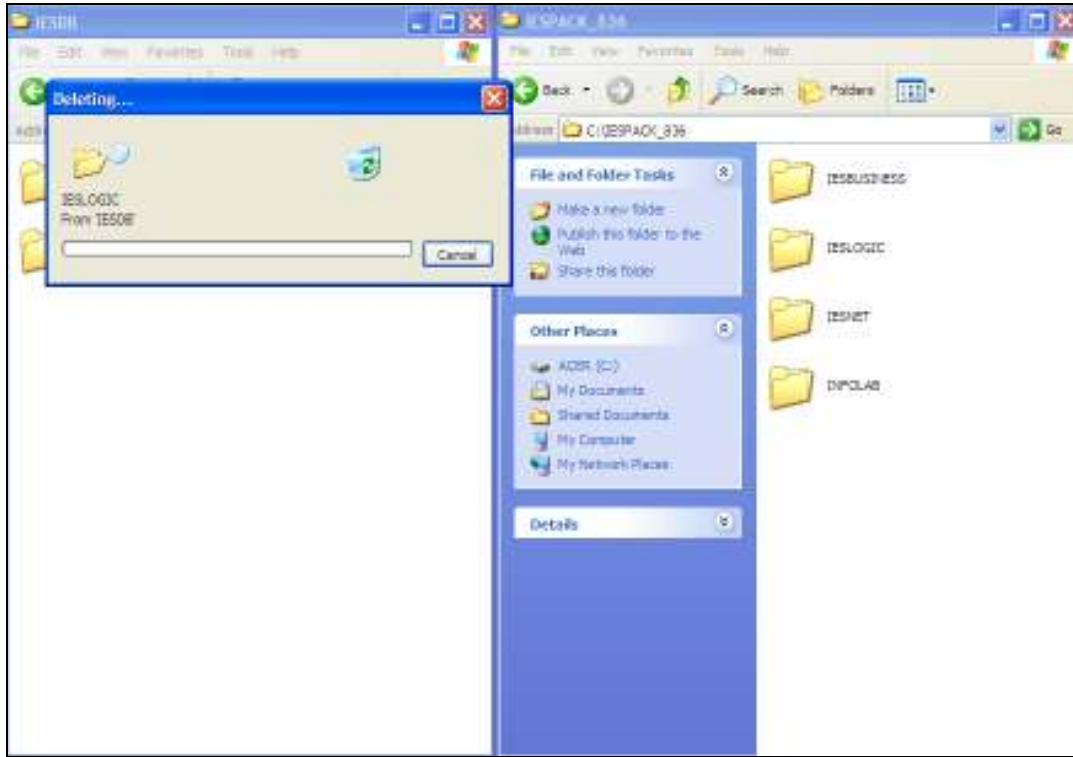
Slide 14

Slide notes:



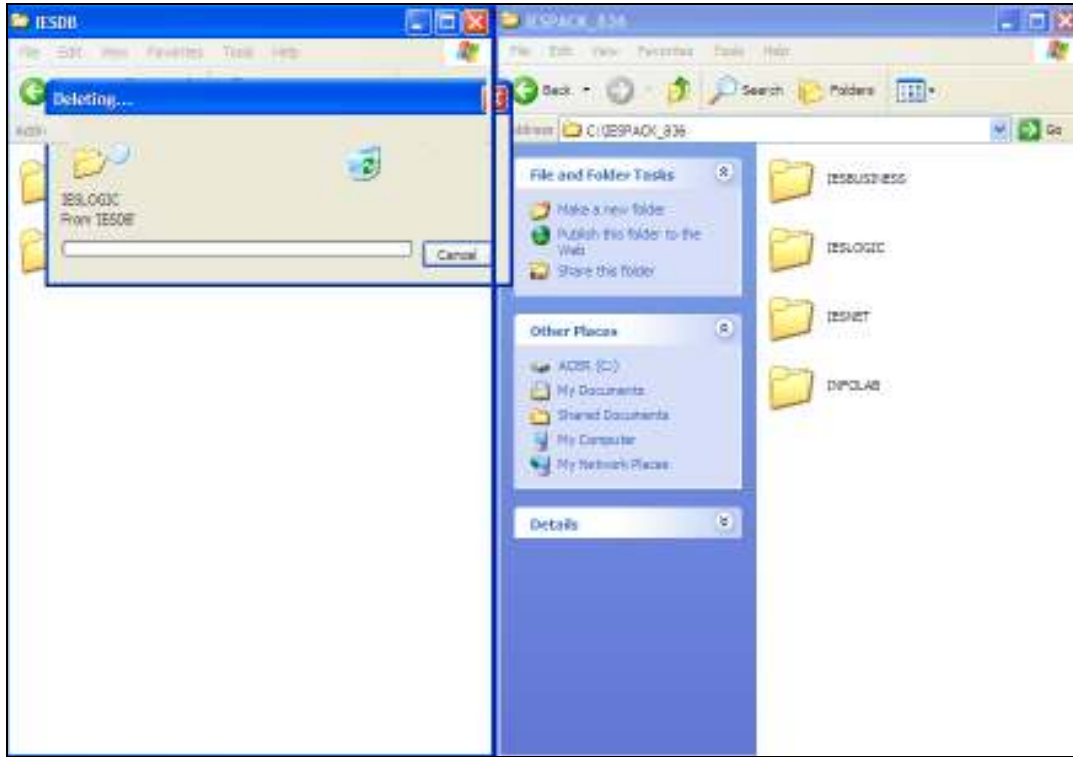
Slide 15

Slide notes:



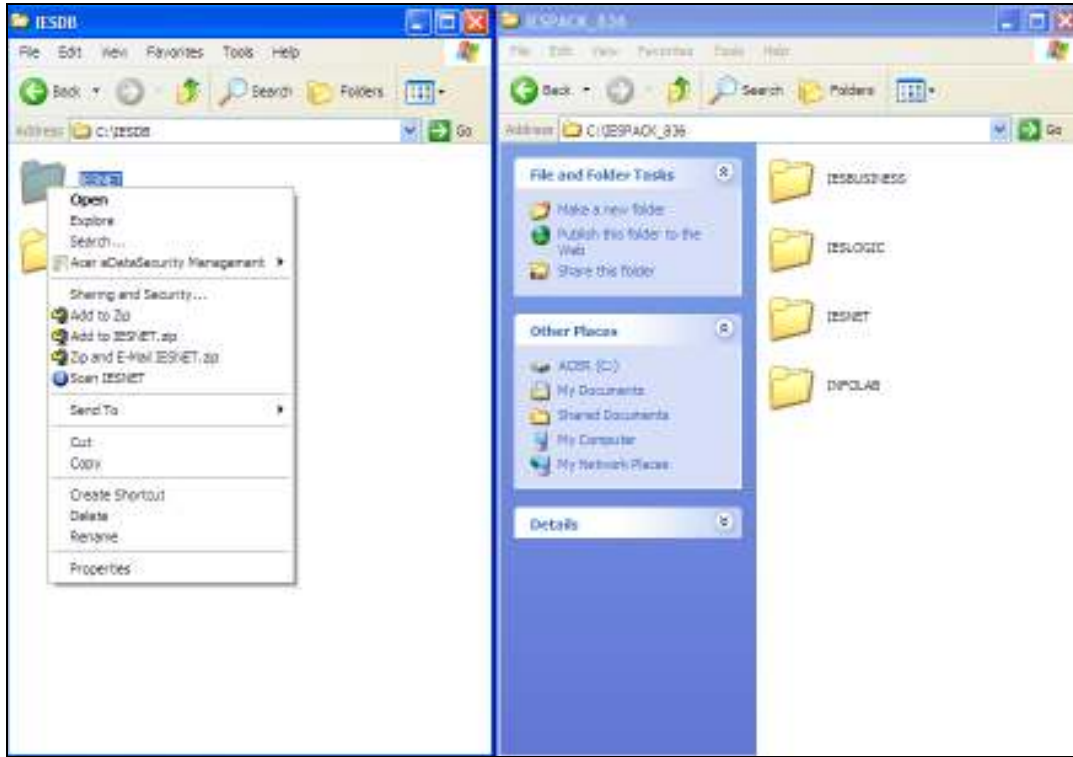
Slide 16

Slide notes:



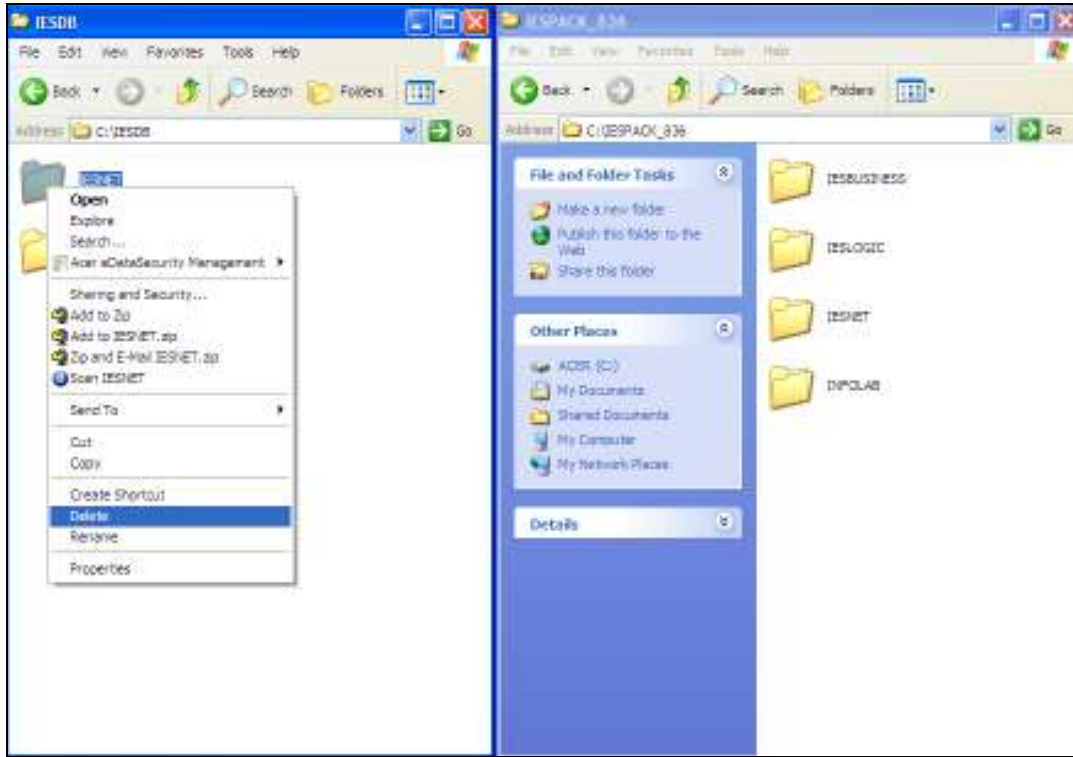
Slide 17

Slide notes:



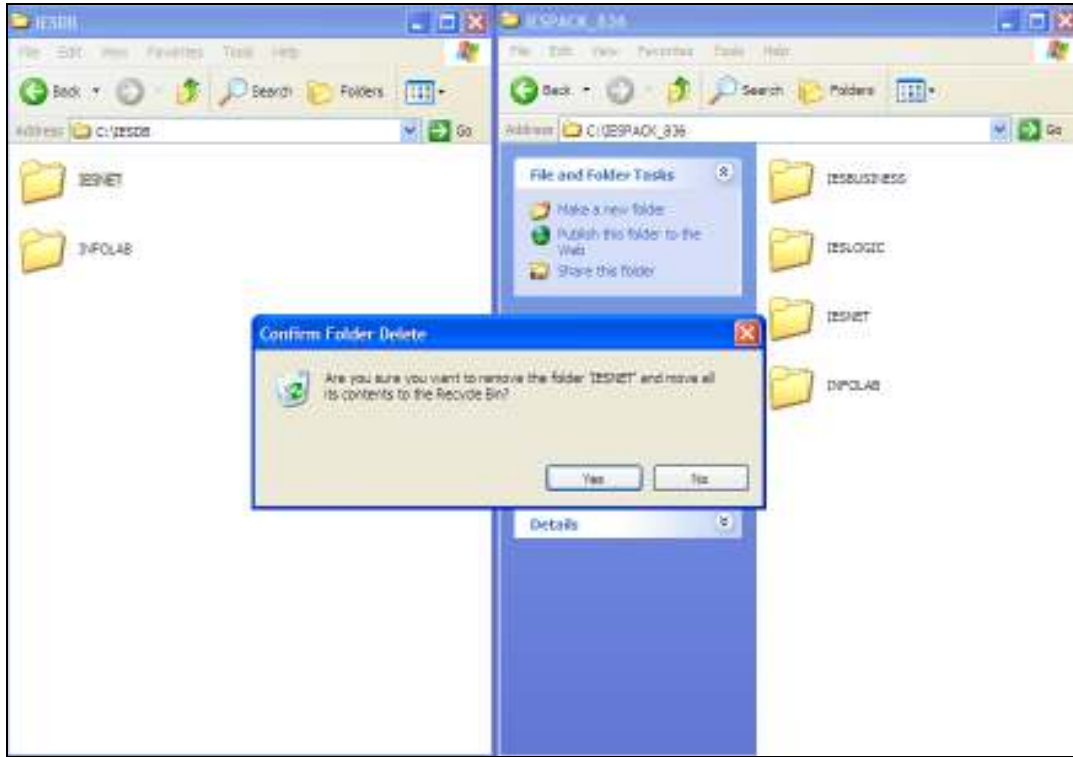
Slide 18

Slide notes:



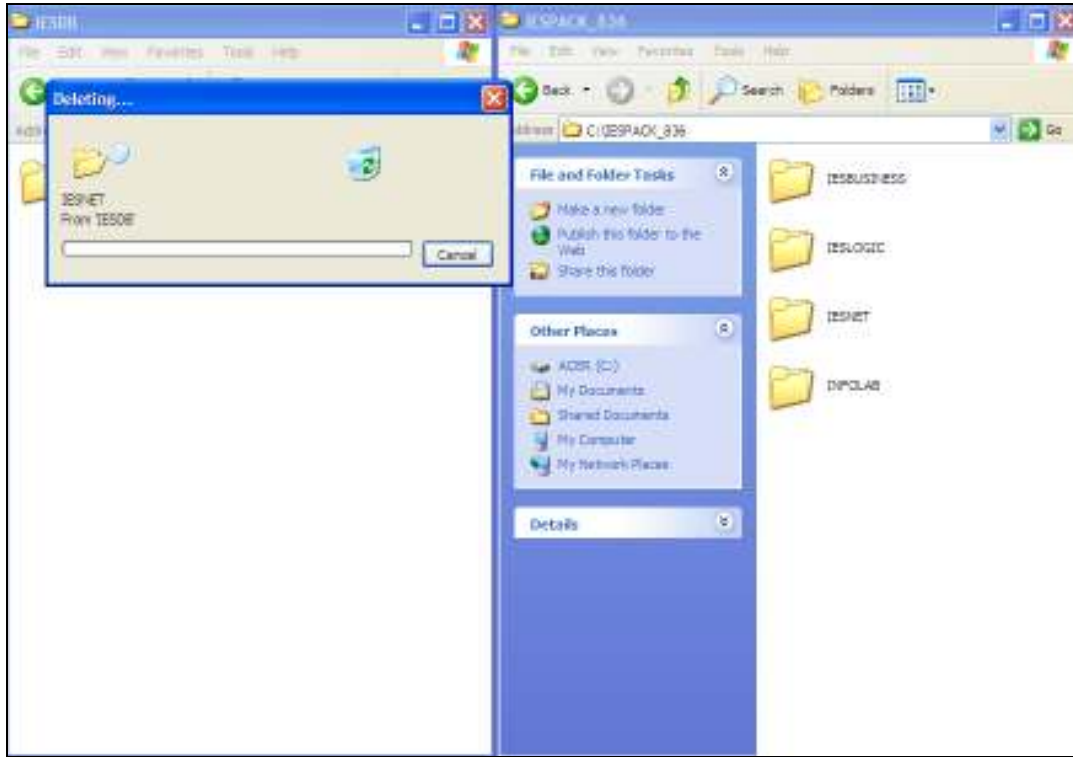
Slide 19

Slide notes:



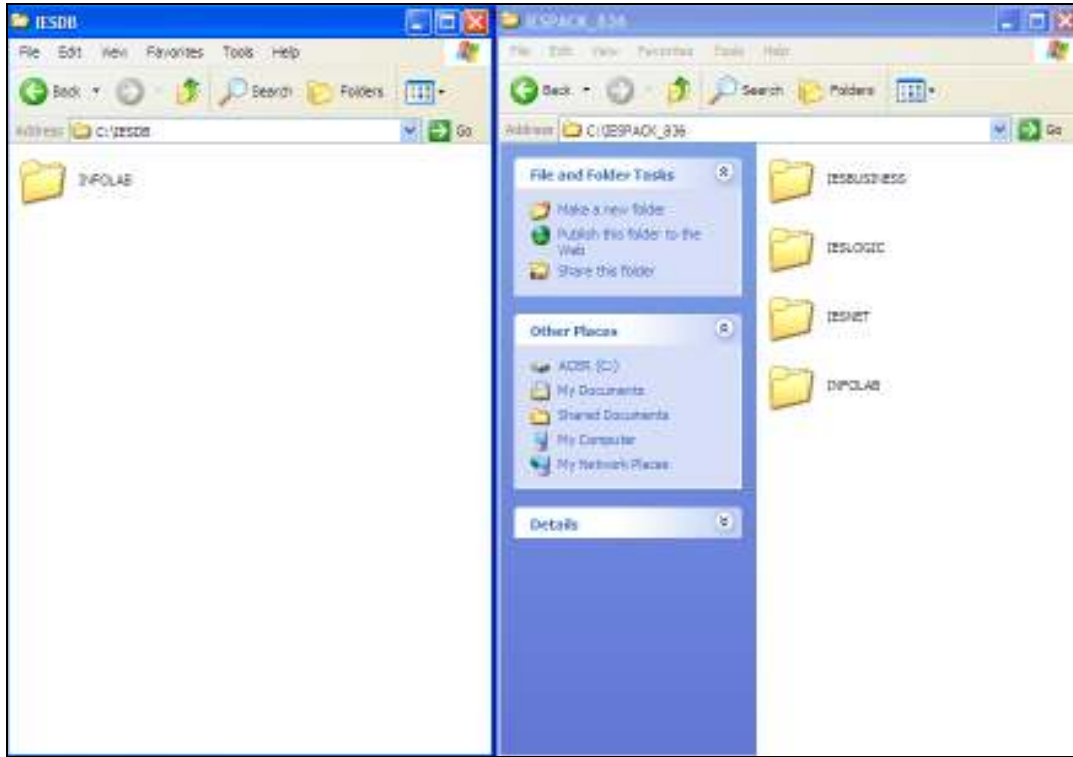
Slide 20

Slide notes:



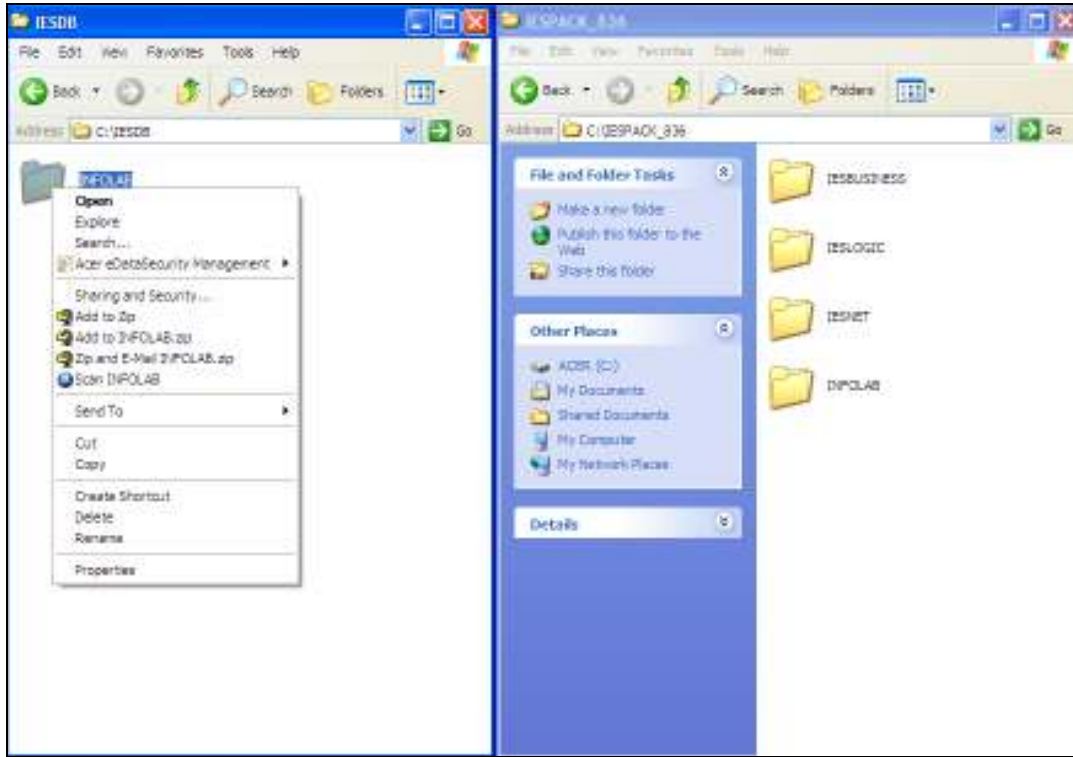
Slide 21

Slide notes:



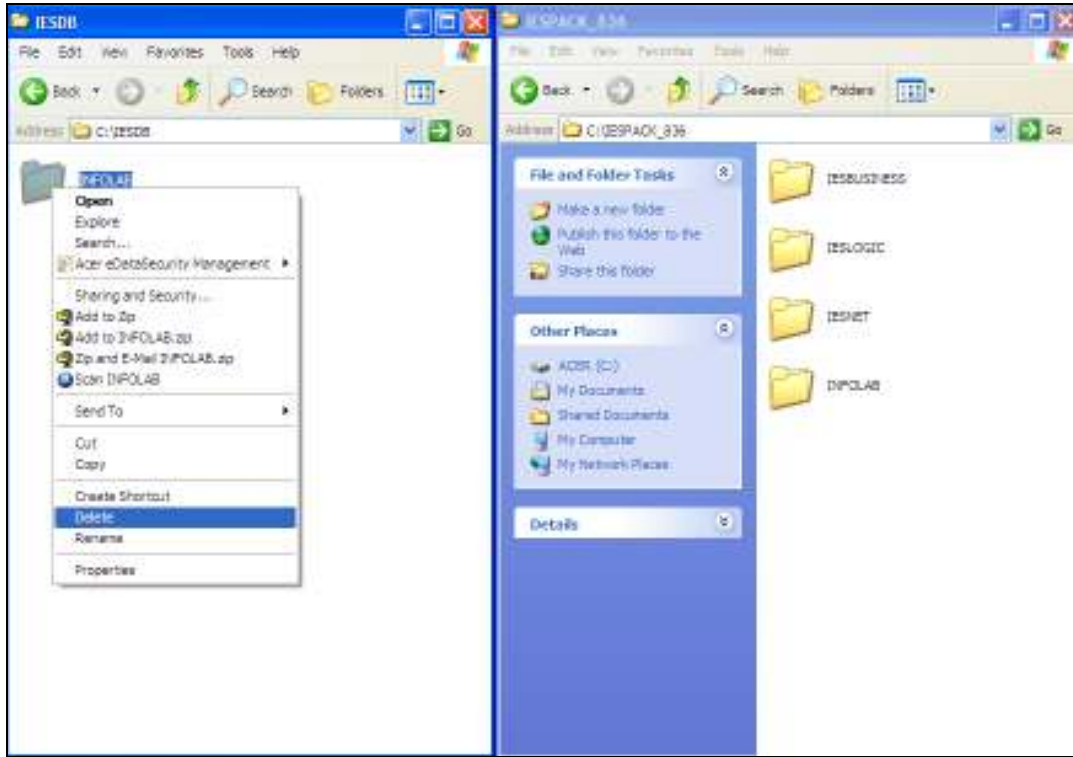
Slide 22

Slide notes:



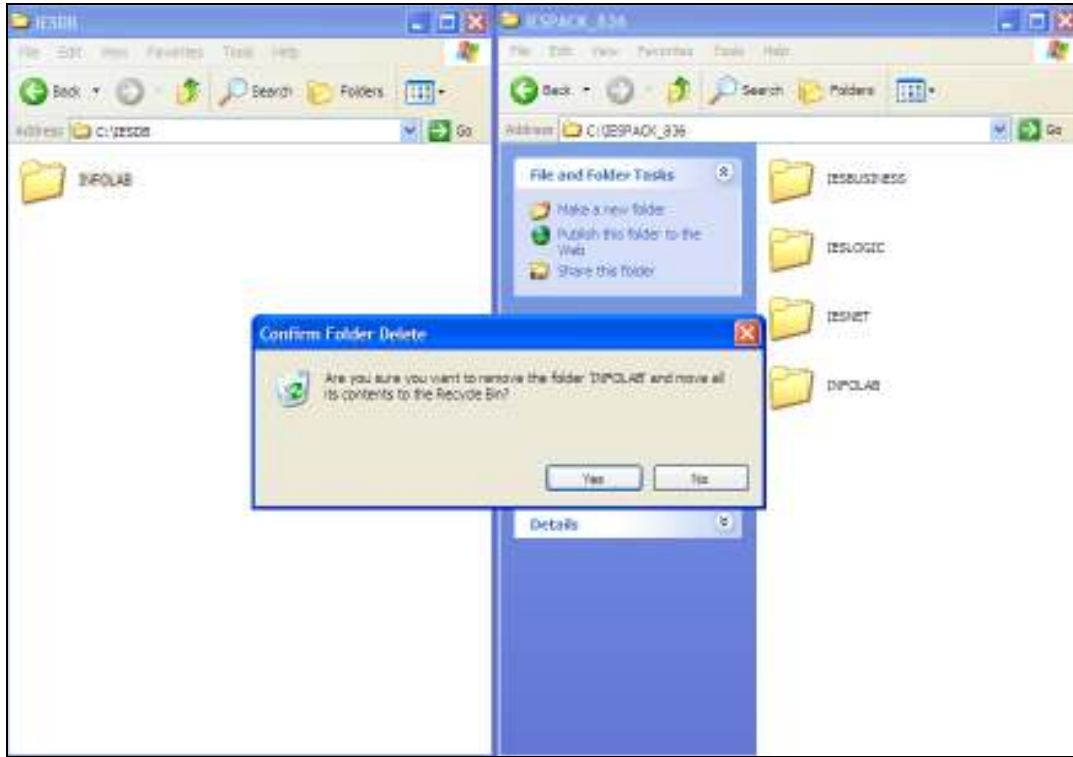
Slide 23

Slide notes:



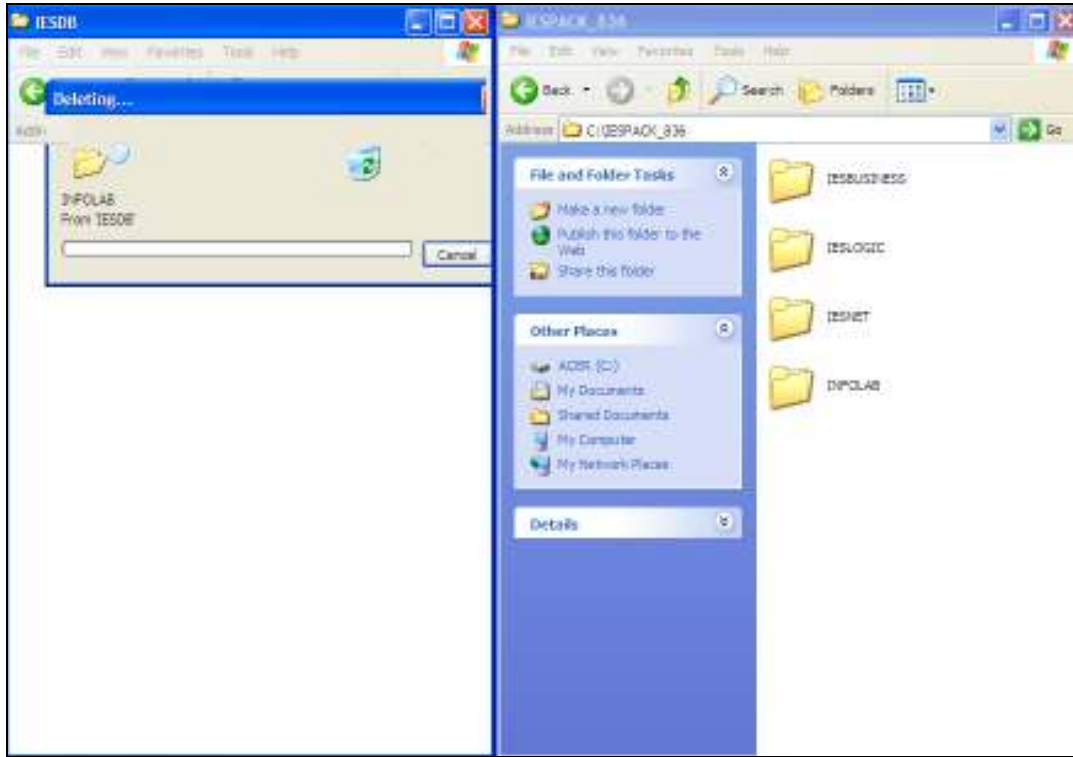
Slide 24

Slide notes:



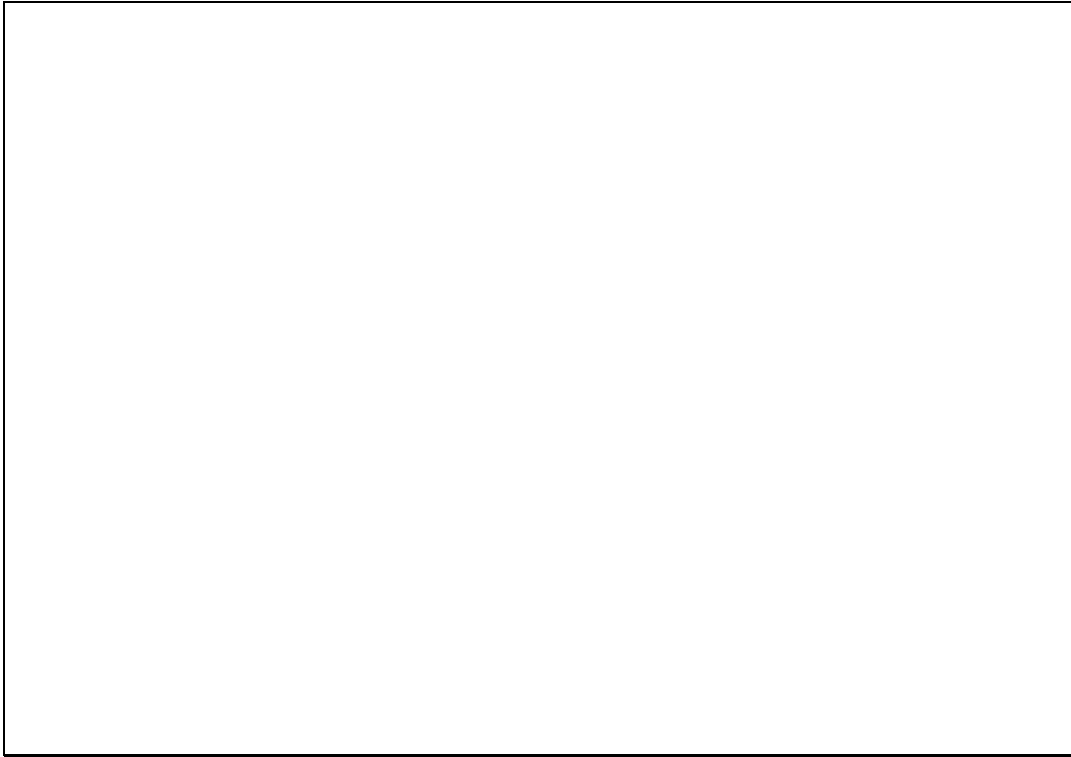
Slide 25

Slide notes:



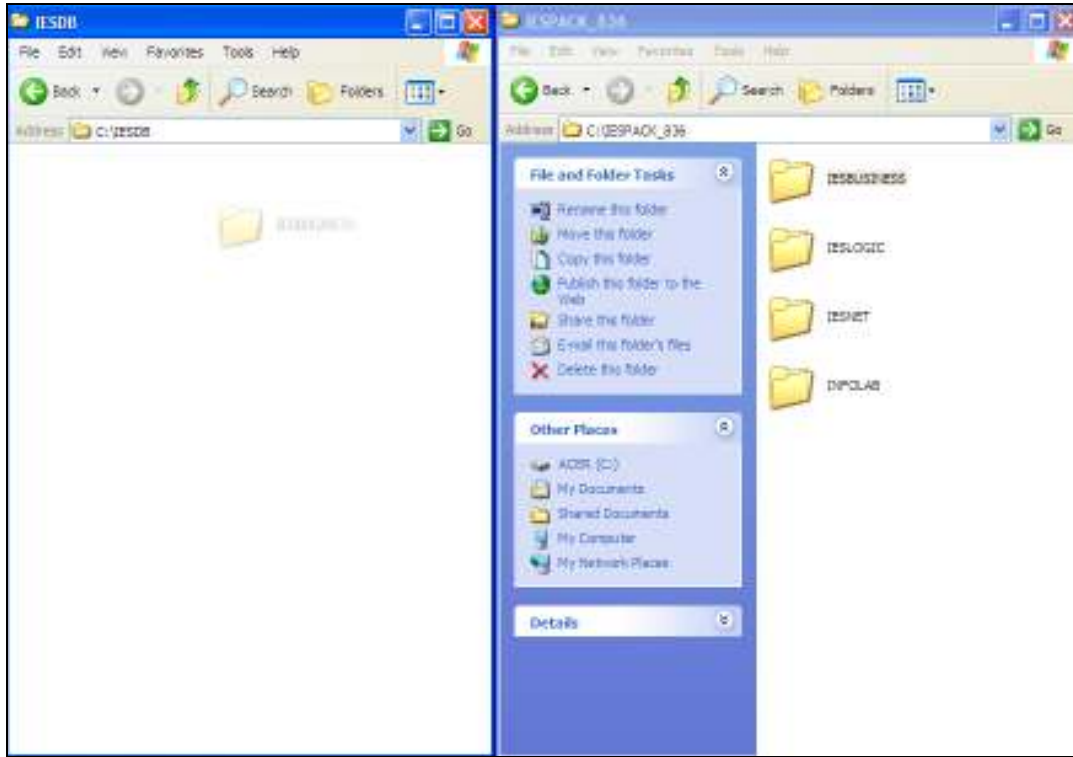
Slide 26

Slide notes:



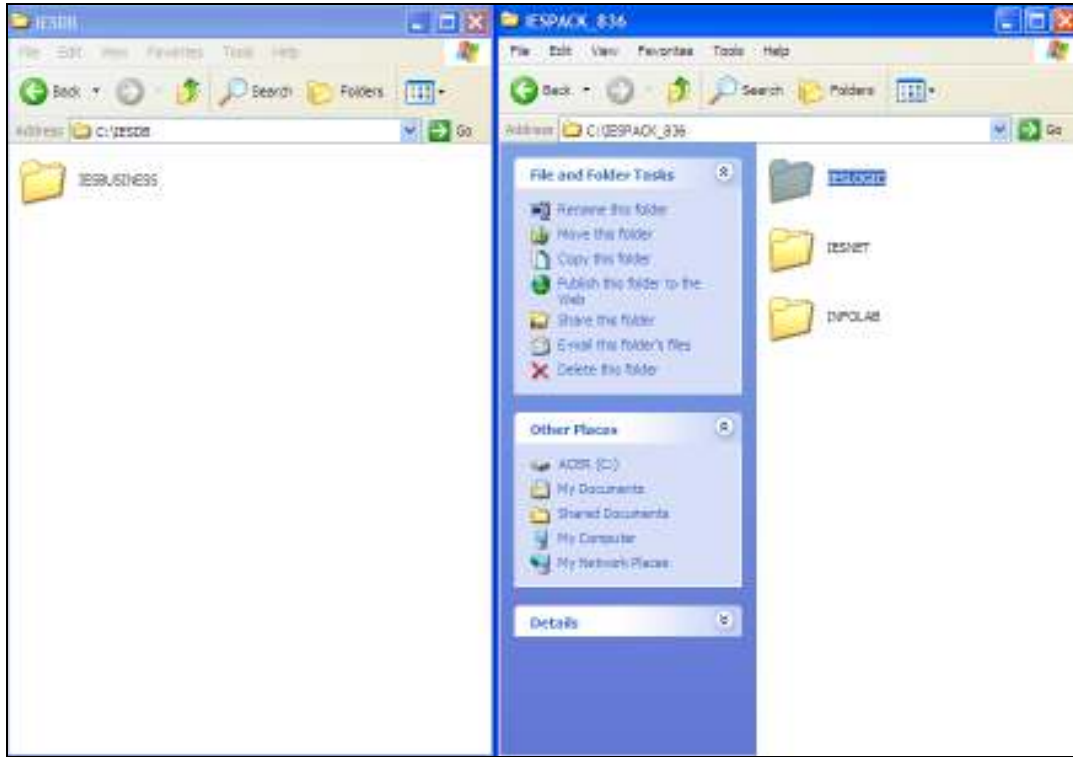
Slide 27

Slide notes: The IESDB folder is now empty, and we can simply drag the Datamarts across from the IESPACK folder.



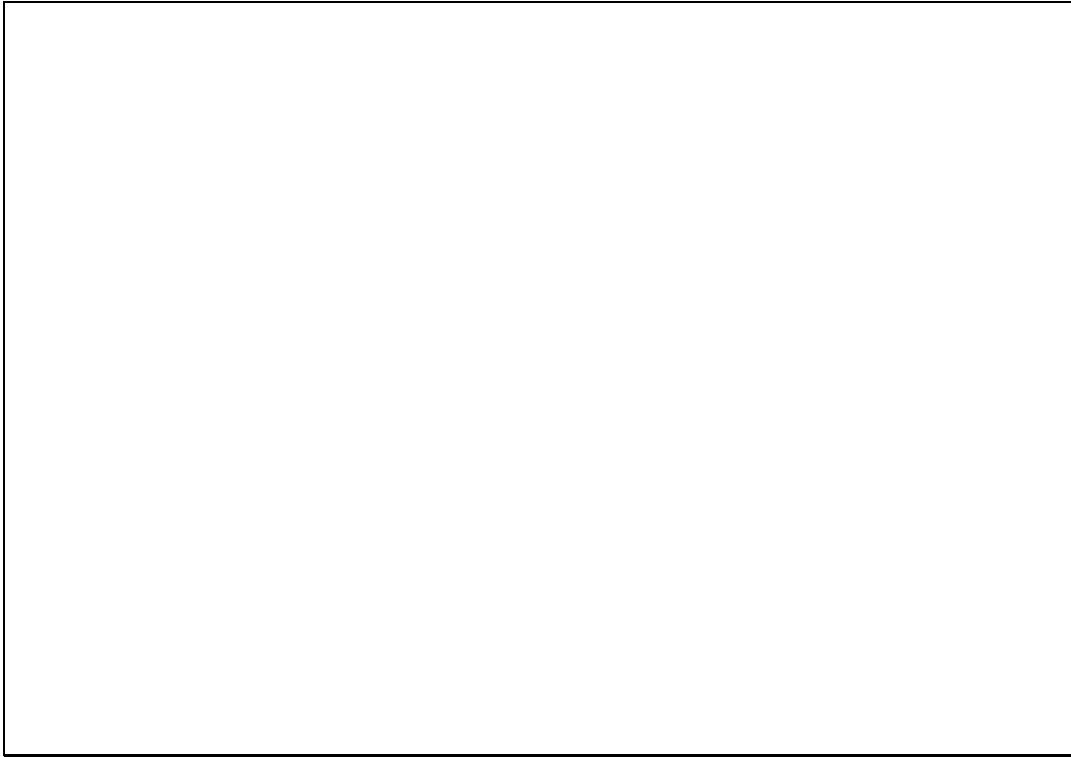
Slide 28

Slide notes:



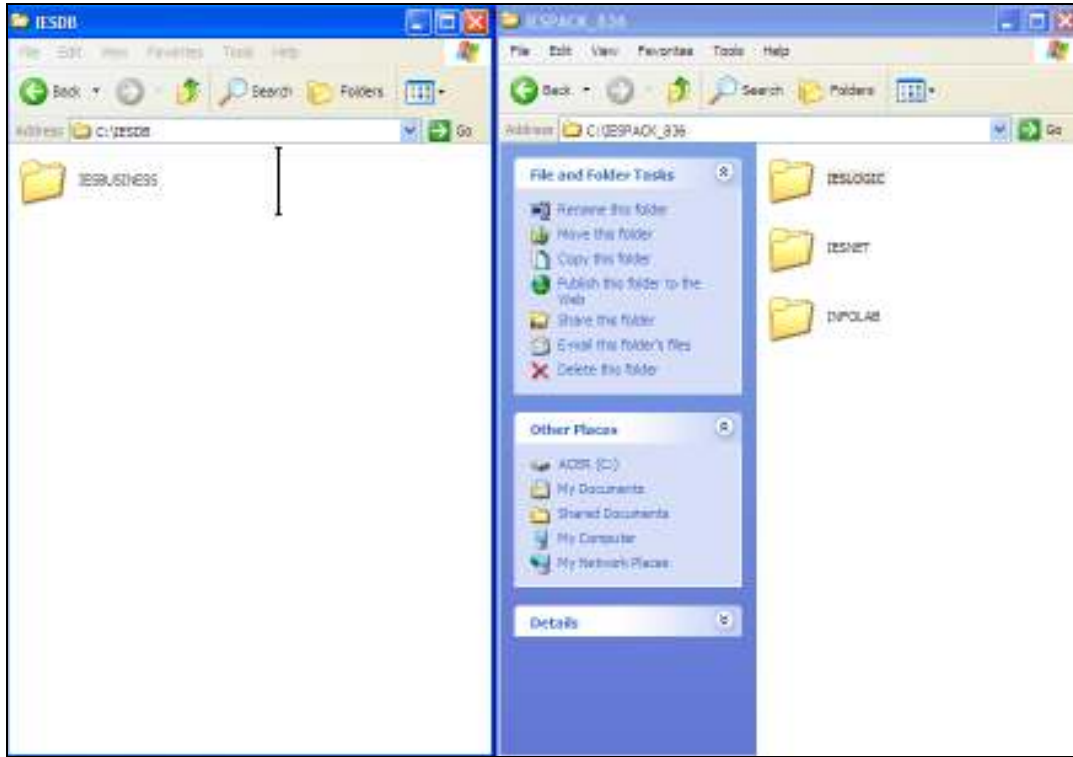
Slide 29

Slide notes:



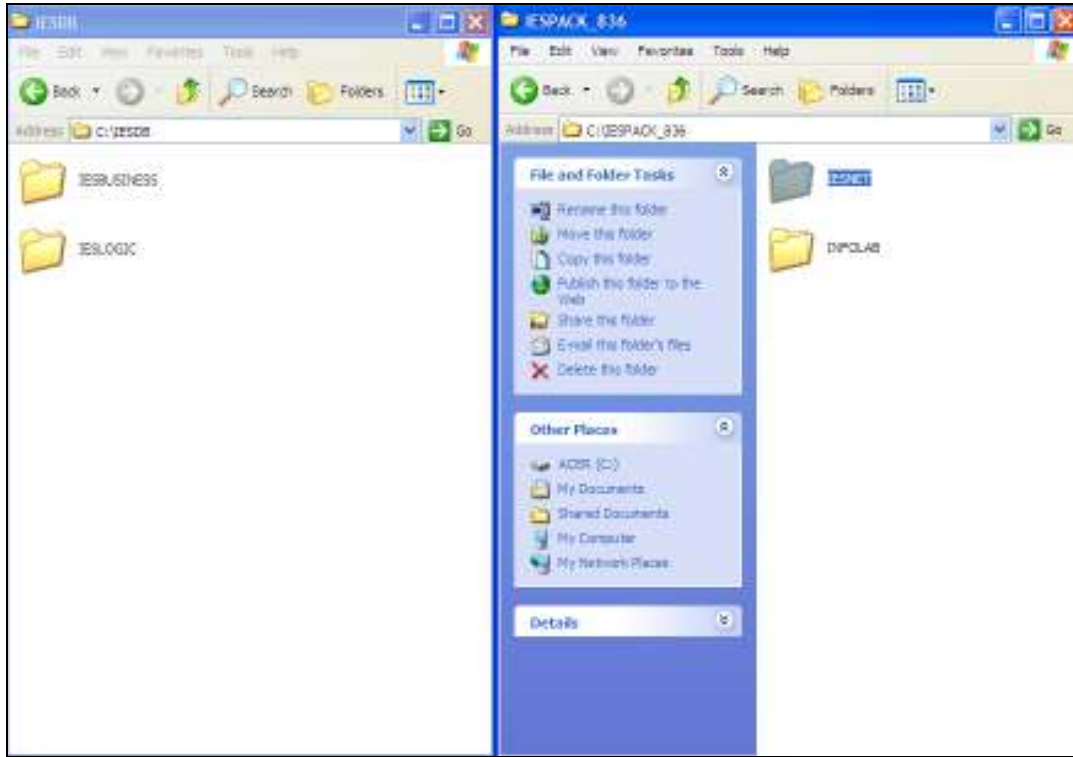
Slide 30

Slide notes:



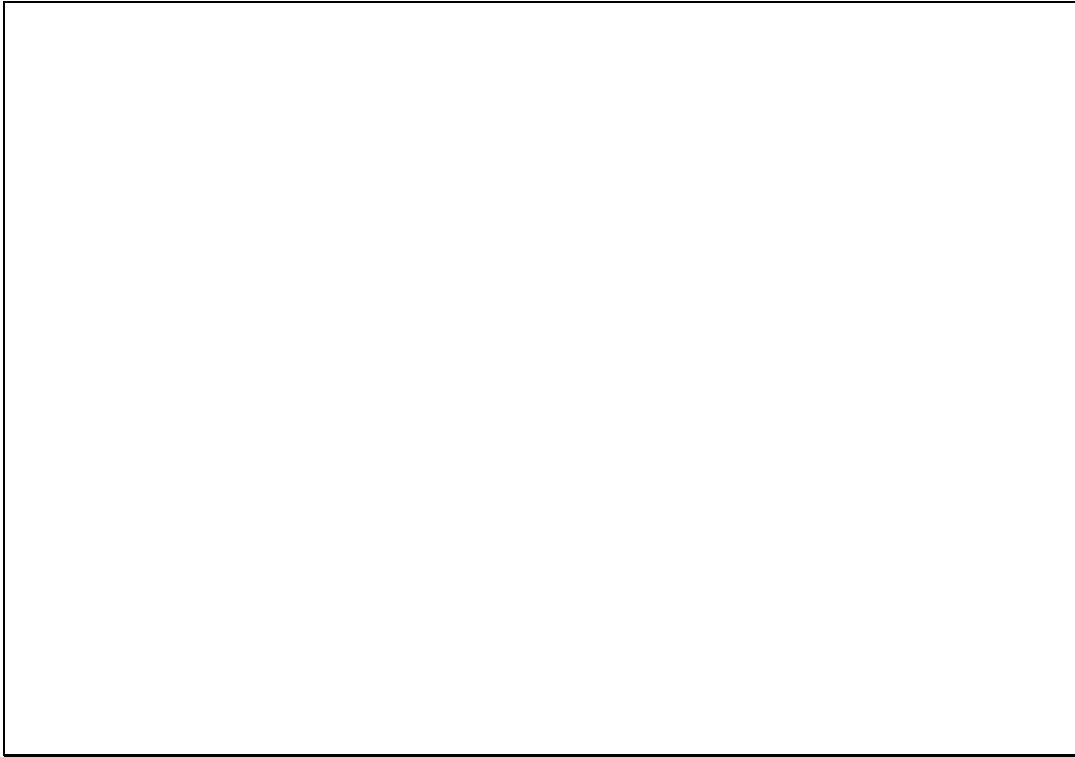
Slide 31

Slide notes:



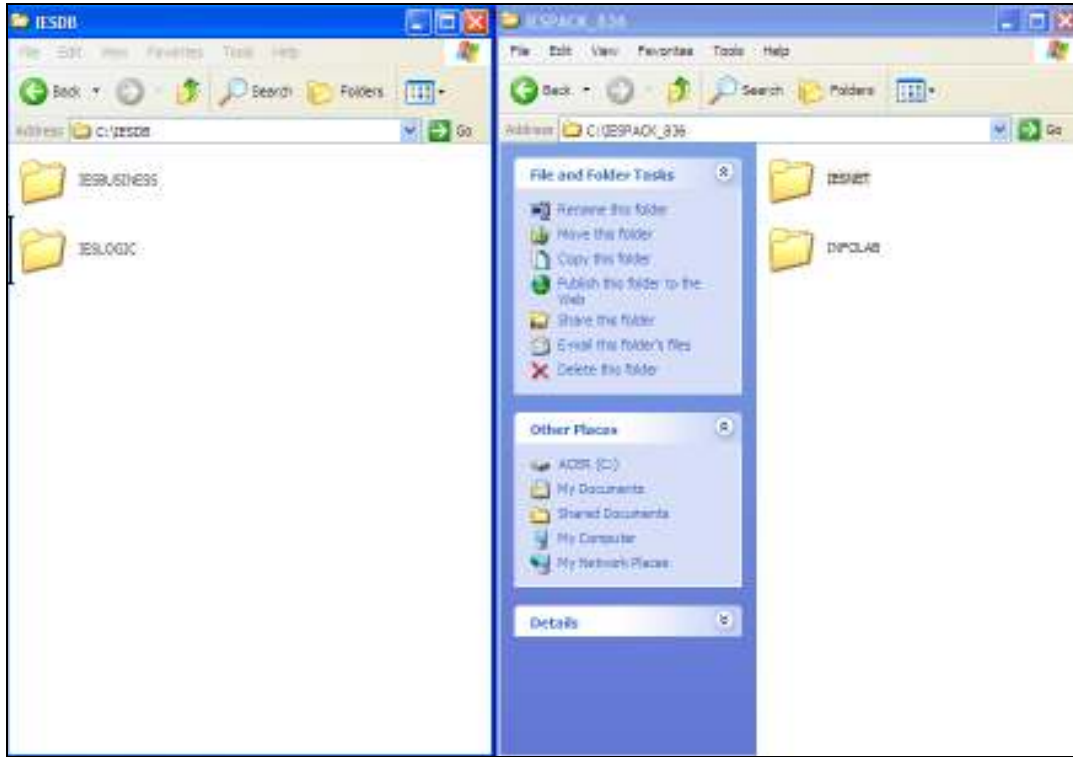
Slide 32

Slide notes:



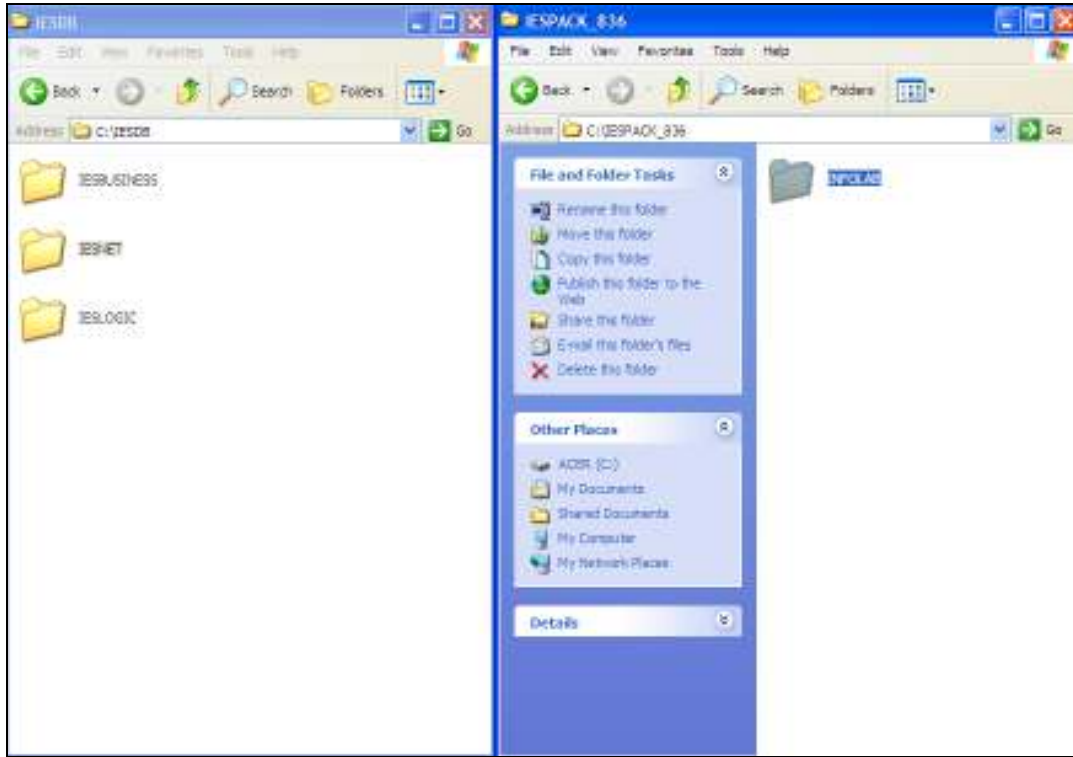
Slide 33

Slide notes:



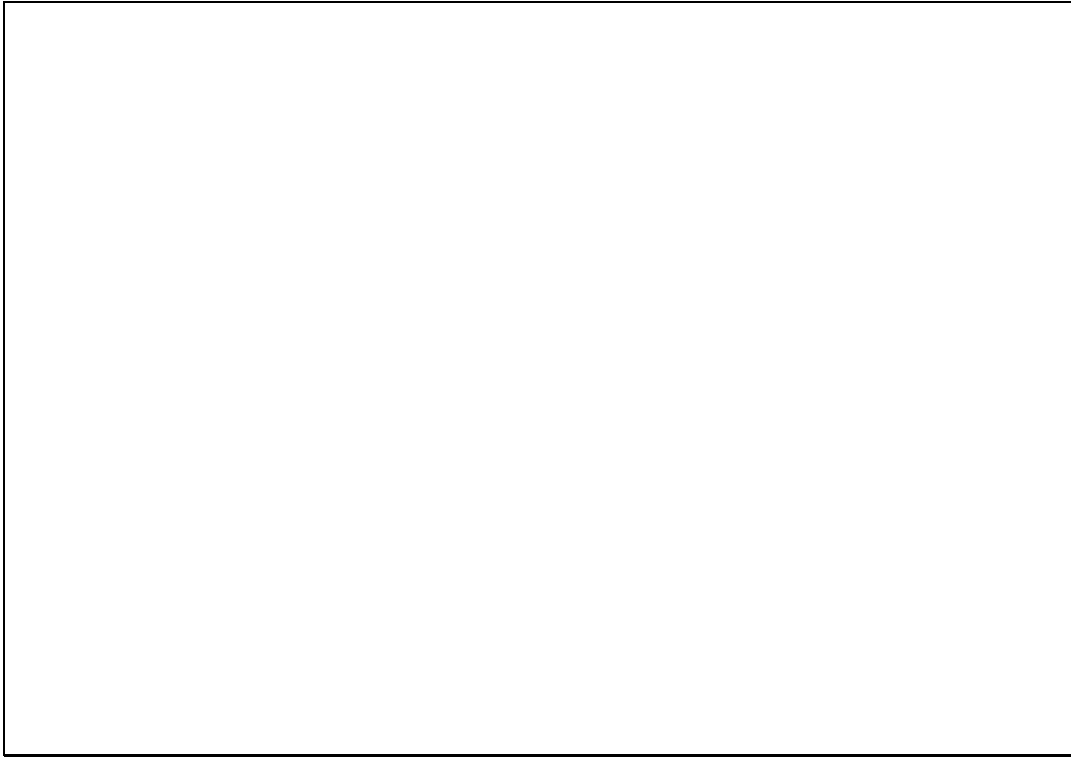
Slide 34

Slide notes:



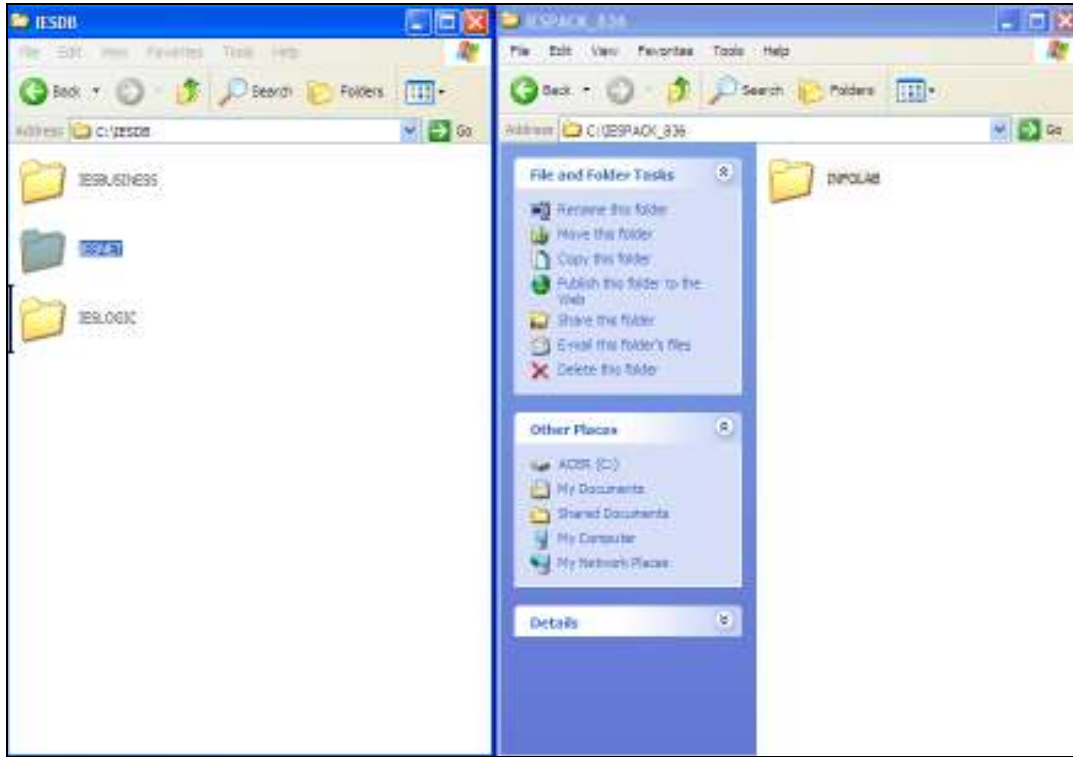
Slide 35

Slide notes:



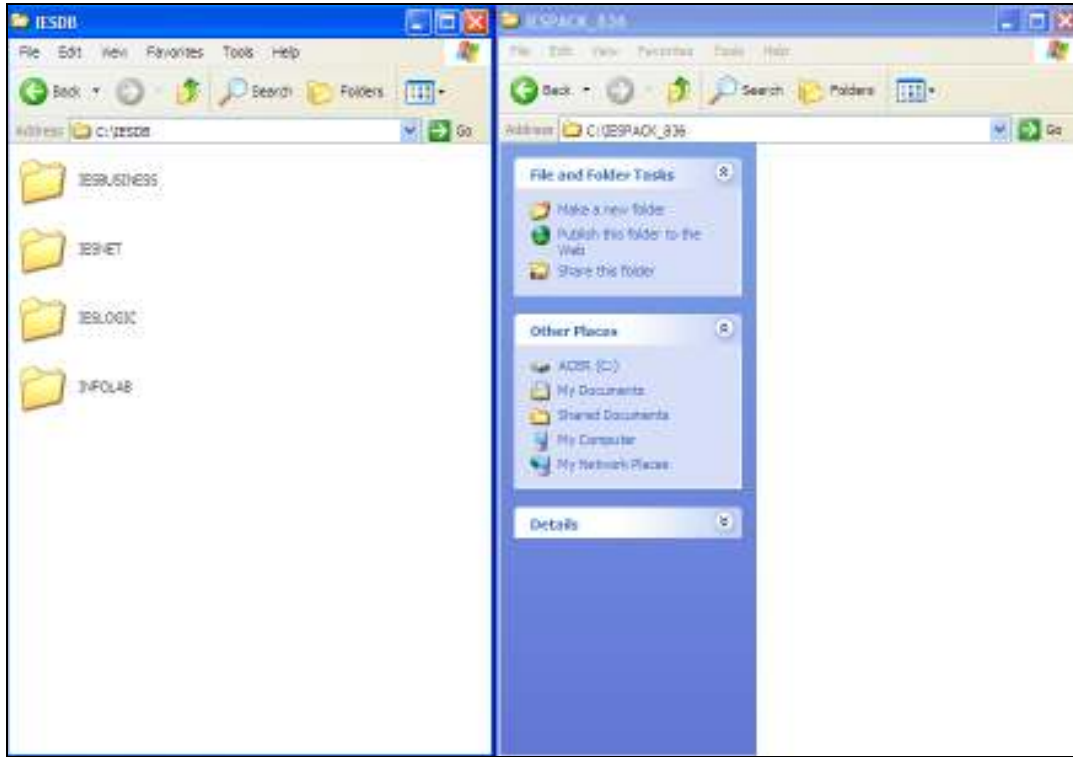
Slide 36

Slide notes:



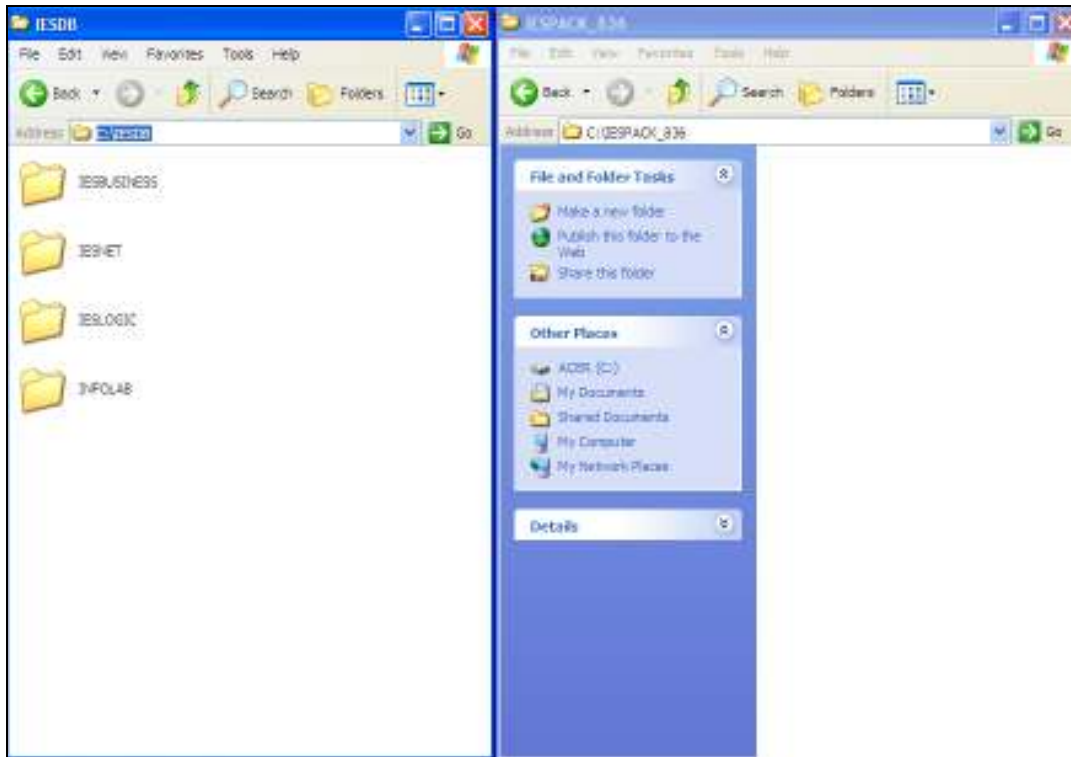
Slide 37

Slide notes:



Slide 38

Slide notes:



Slide 39

Slide notes: This is not the only way to do it, but it is an easy way to understand, and we have now populated the IESDB folder with the installation Datamarts from the IESPACK software download, exactly as we should for a 1st installation.