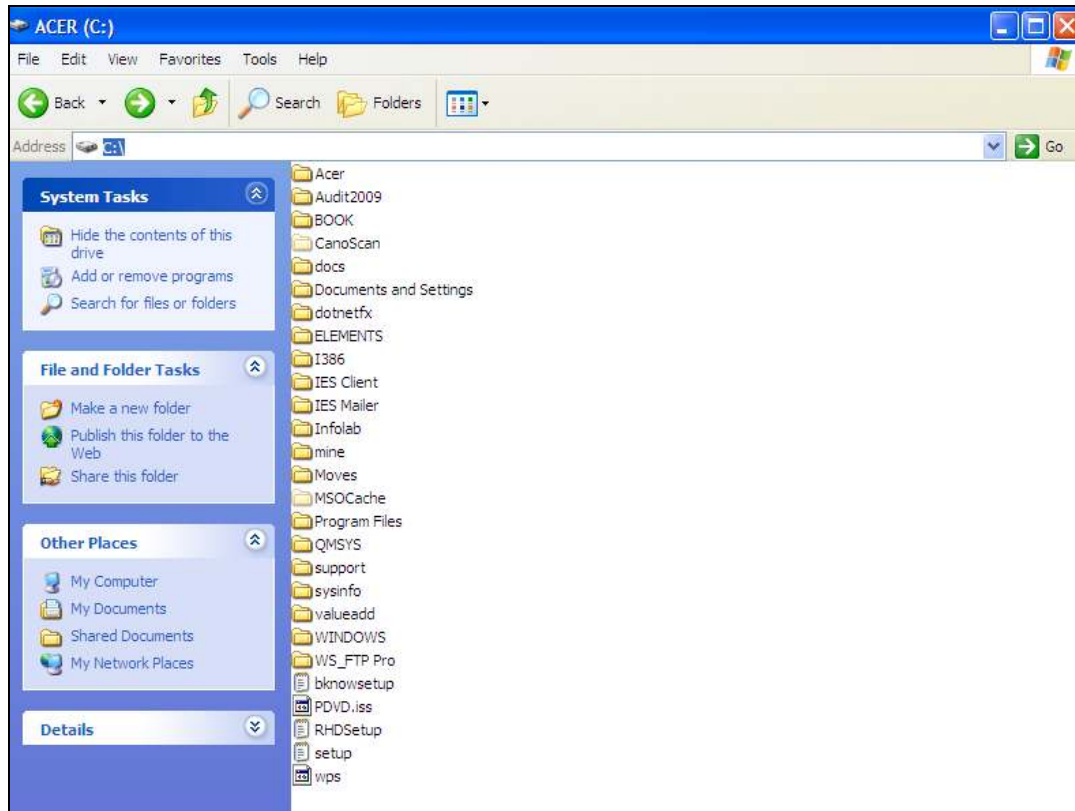


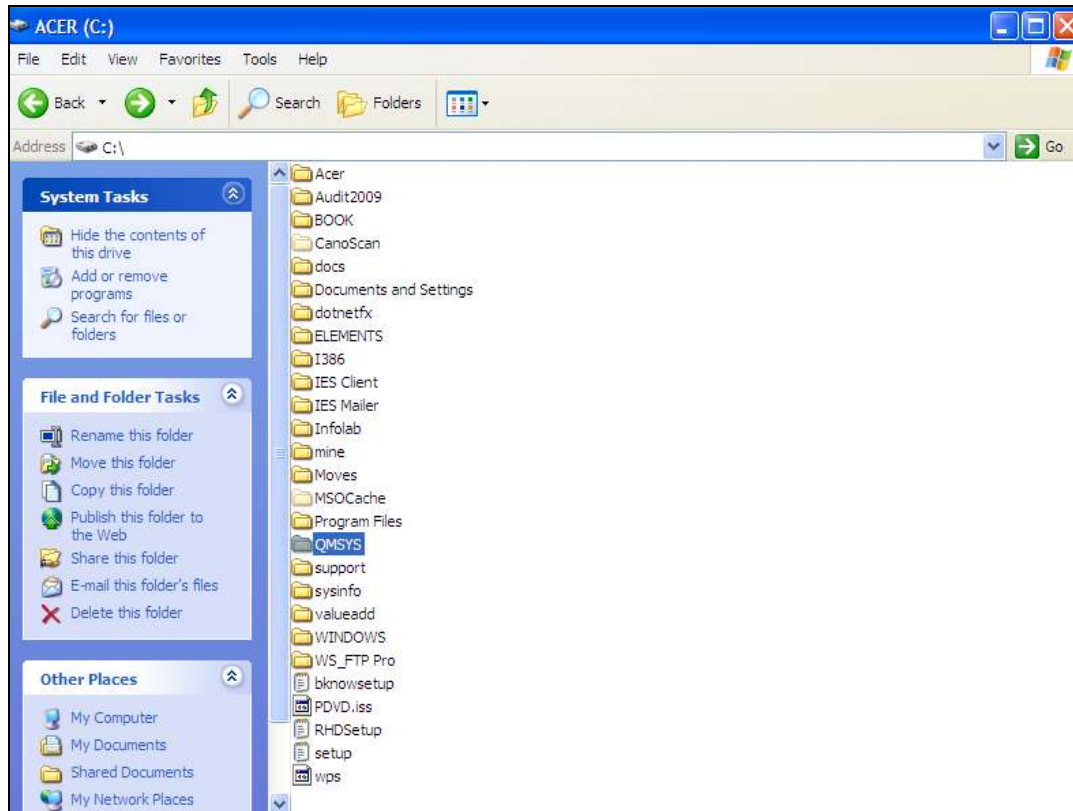
Slide 1

Slide notes: When we 1st install IES, we need to create the primary database folder called IESDB.



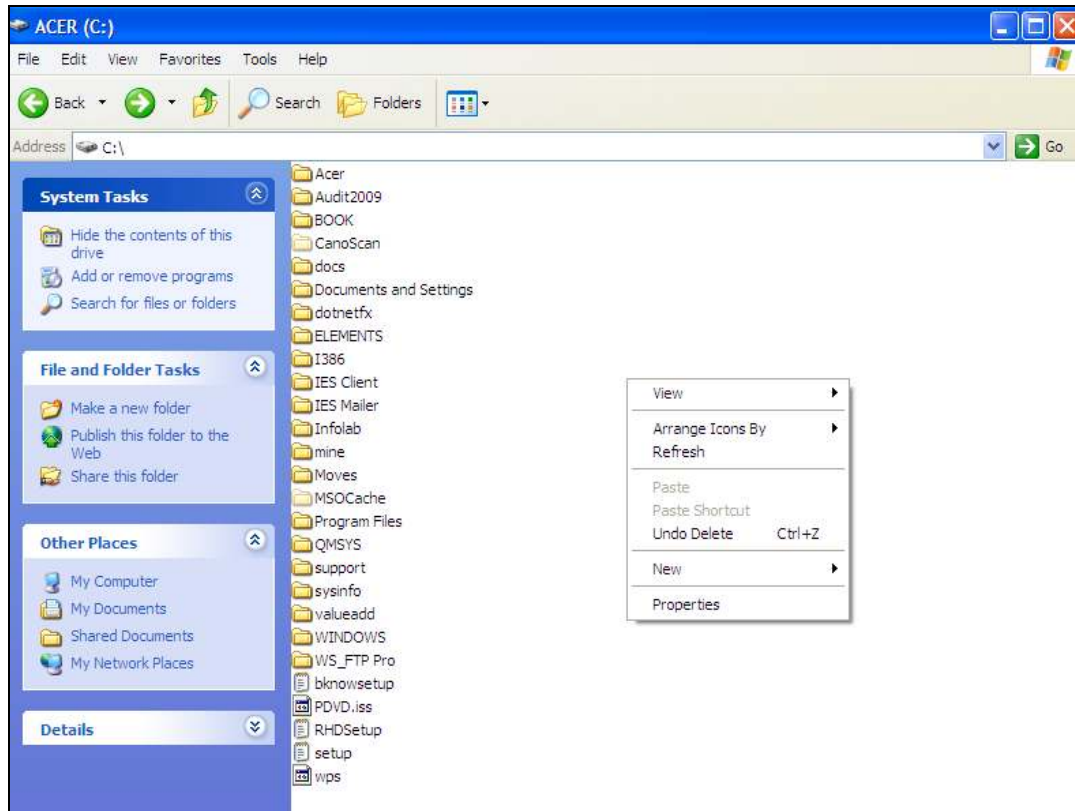
Slide 2

Slide notes: This folder is created on the same drive as our QM Database installation where the QMSYS folder can already be seen, and in this example it is on drive C.

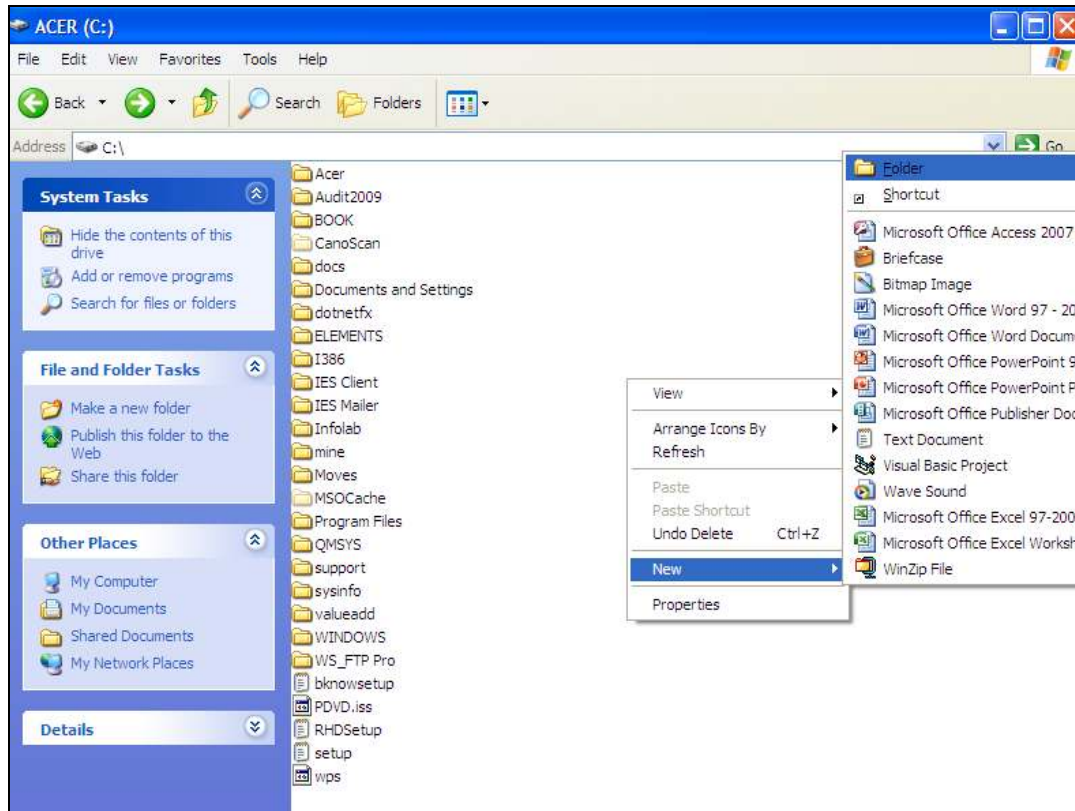


Slide 3

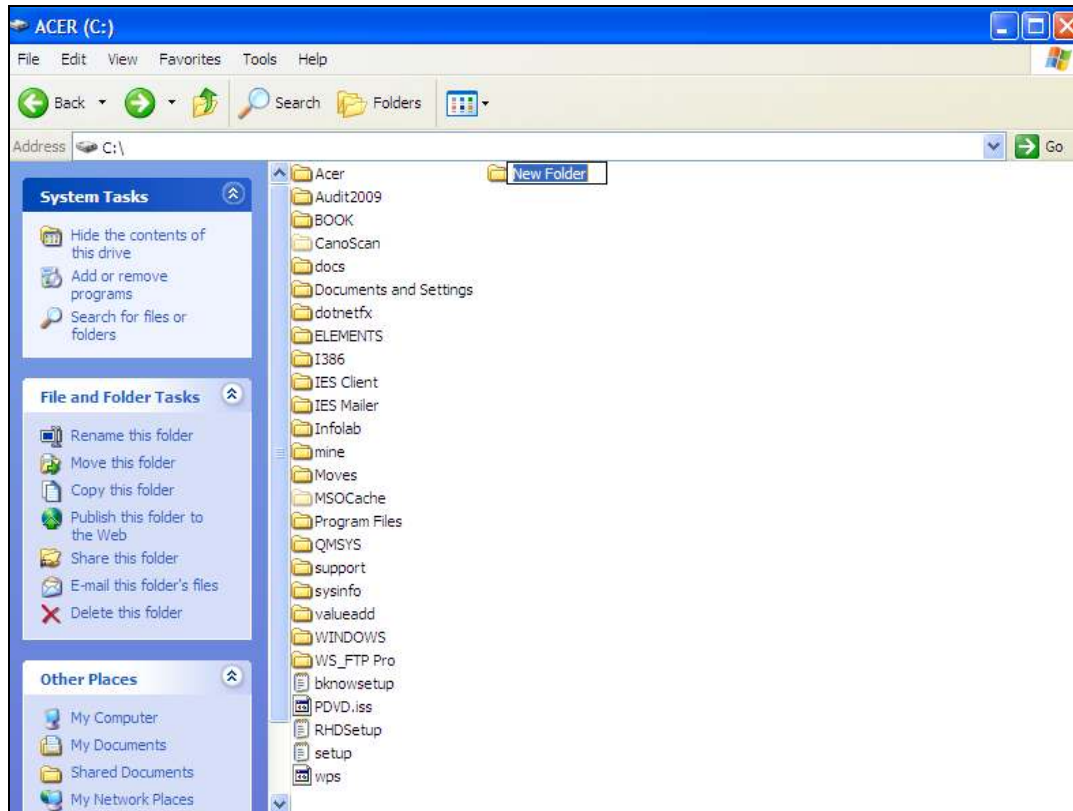
Slide notes: We can right-click and choose NEW.



Slide 4
Slide notes:

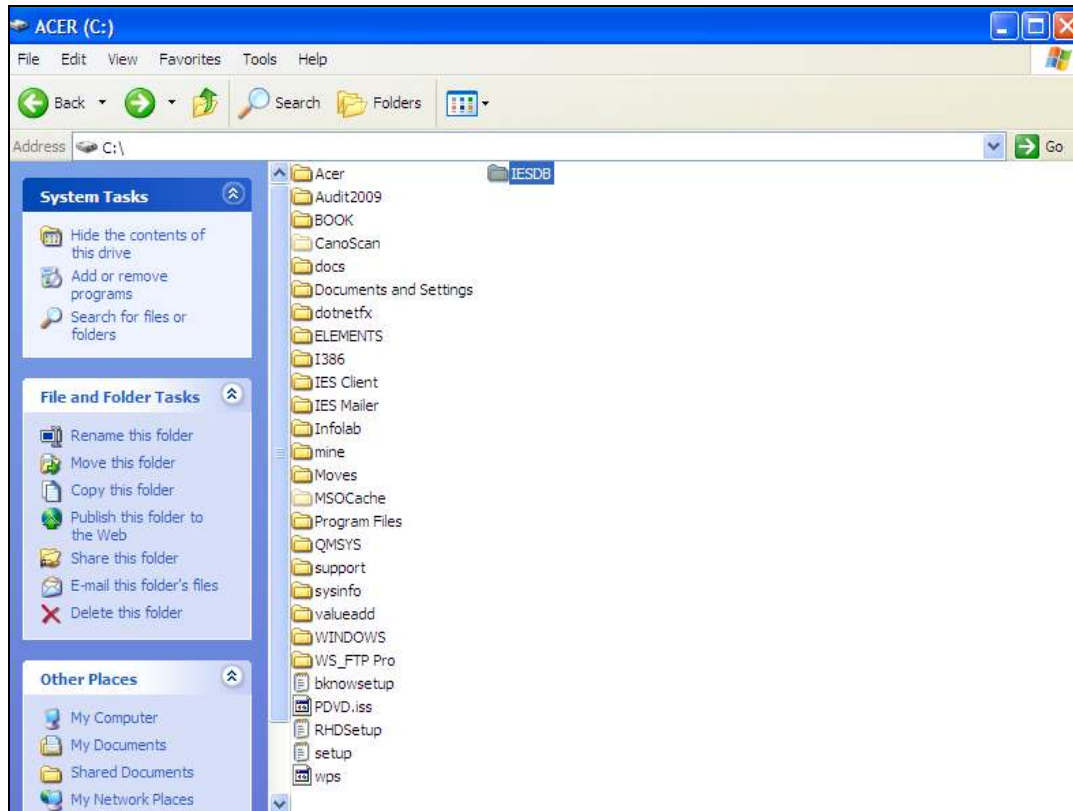


Slide 5
 Slide notes: And then choose FOLDER.



Slide 6

Slide notes: And we name the folder as IESDB.



Slide 7

Slide notes: The IES Datamarts will reside in the IESDB folder.