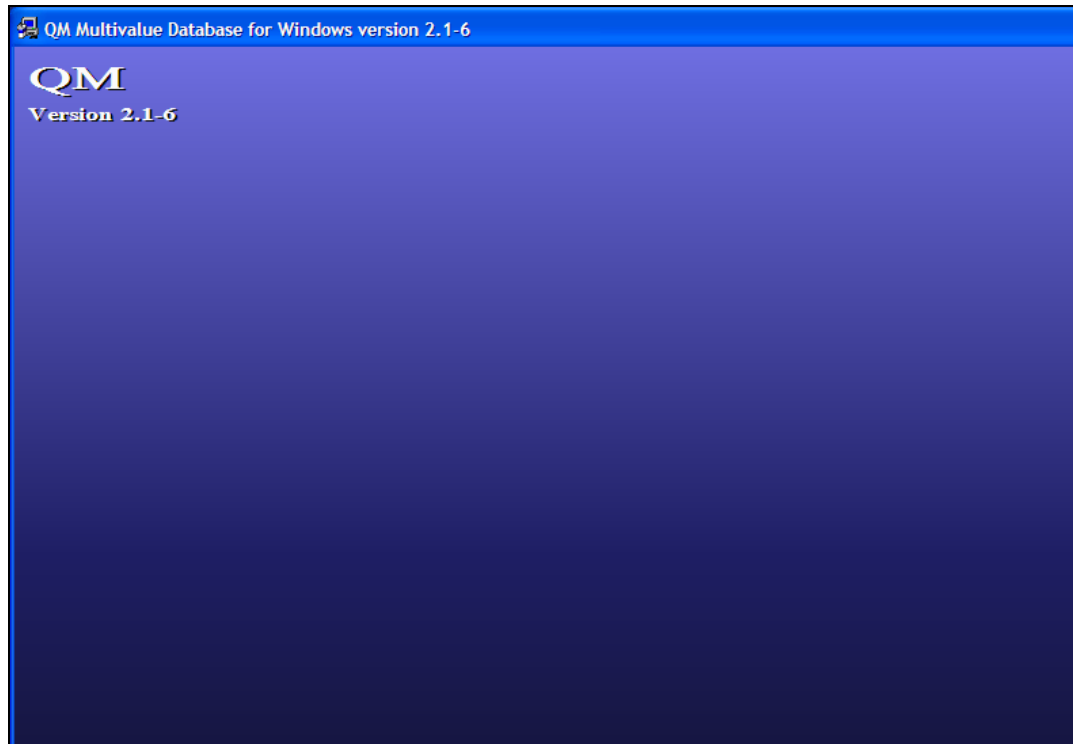


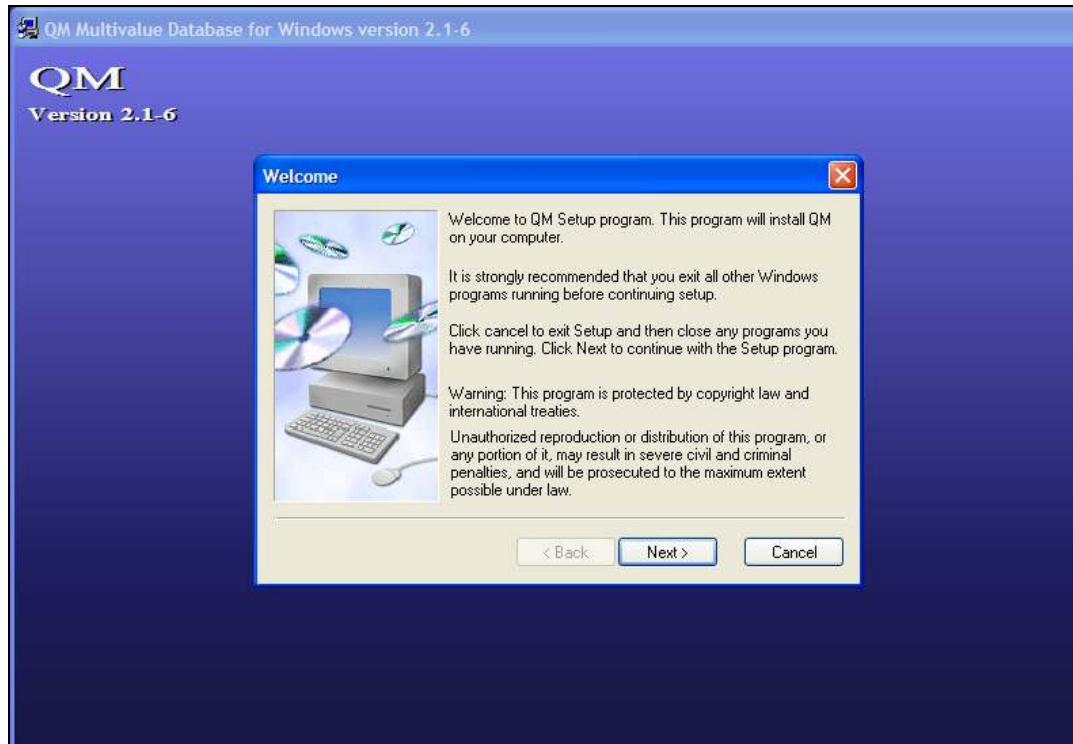
Slide 1

Slide notes: Installation of the QM database is easy. We will now show the steps. It is important that the current User who performs the installation has Administrator privileges on the server. To start, open the installation software.



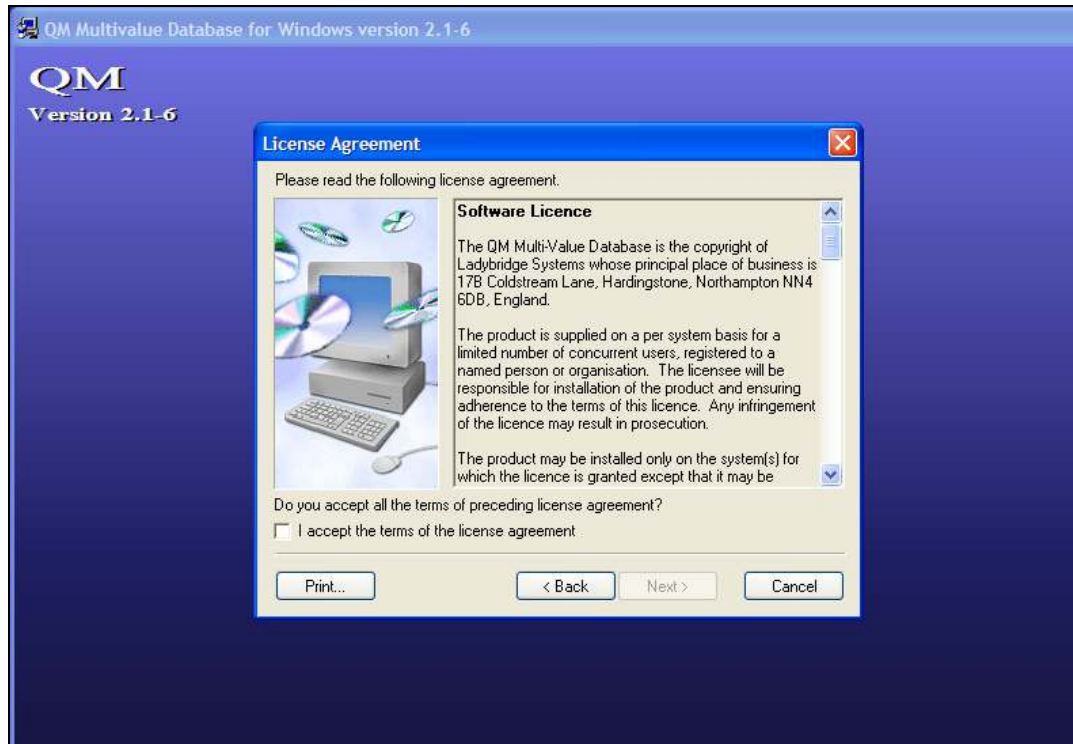
Slide 2

Slide notes:



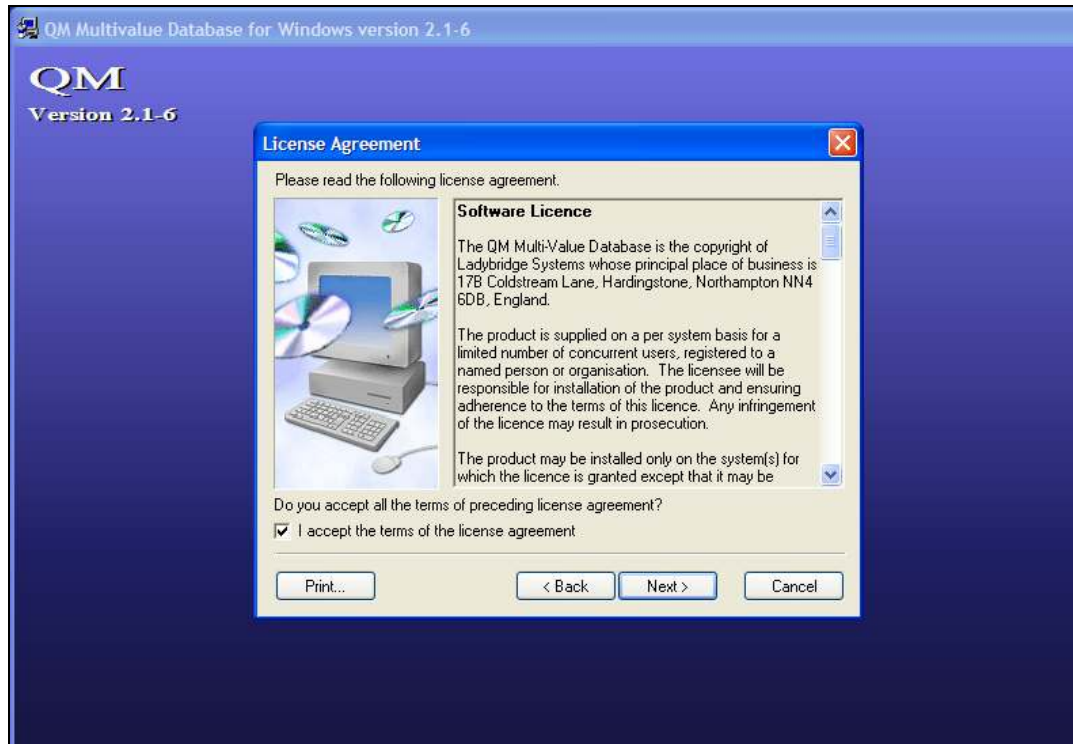
Slide 3

Slide notes: Choose NEXT.



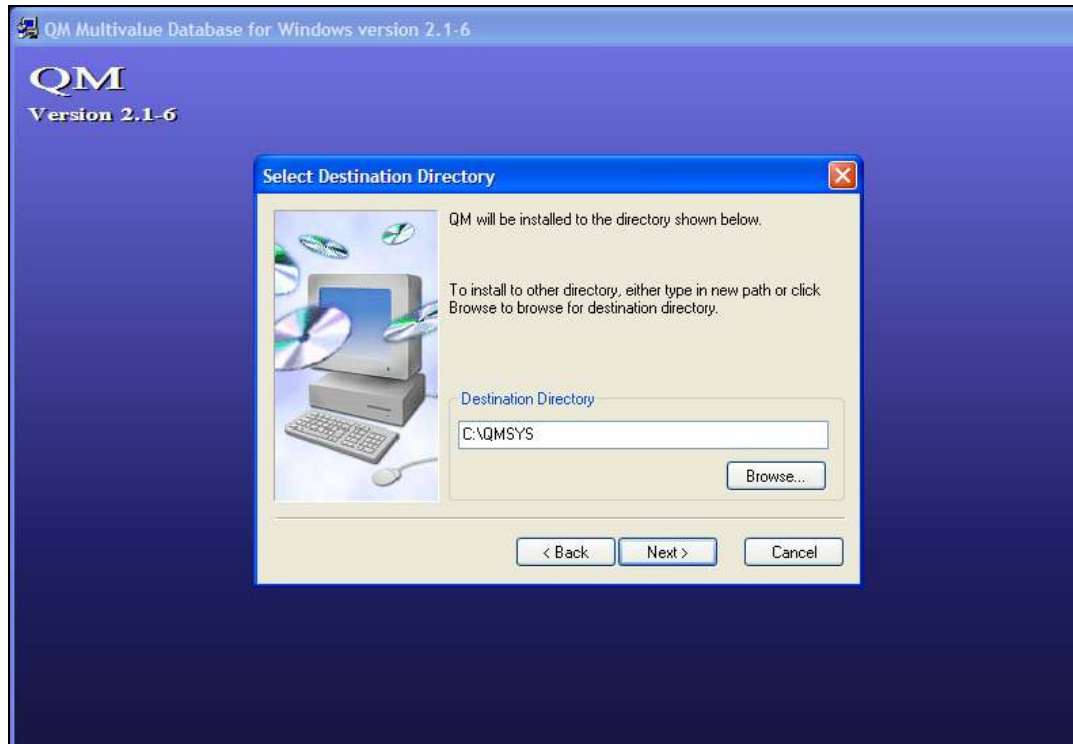
Slide 4

Slide notes: Accept the License agreement and choose NEXT.



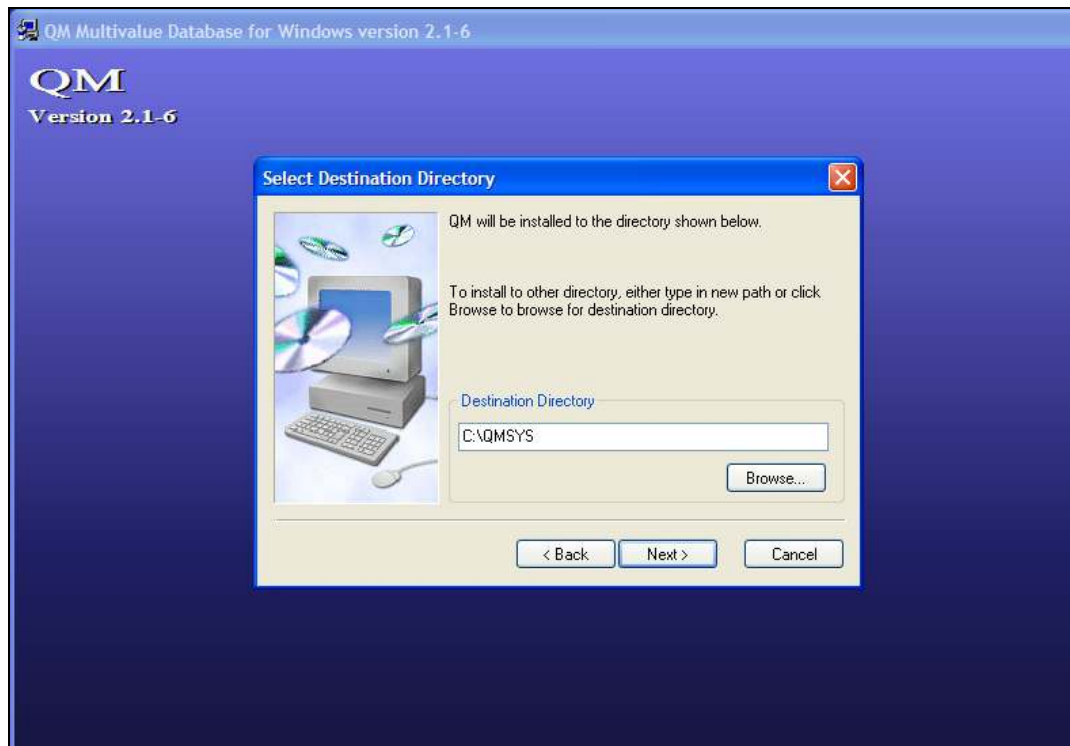
Slide 5

Slide notes:



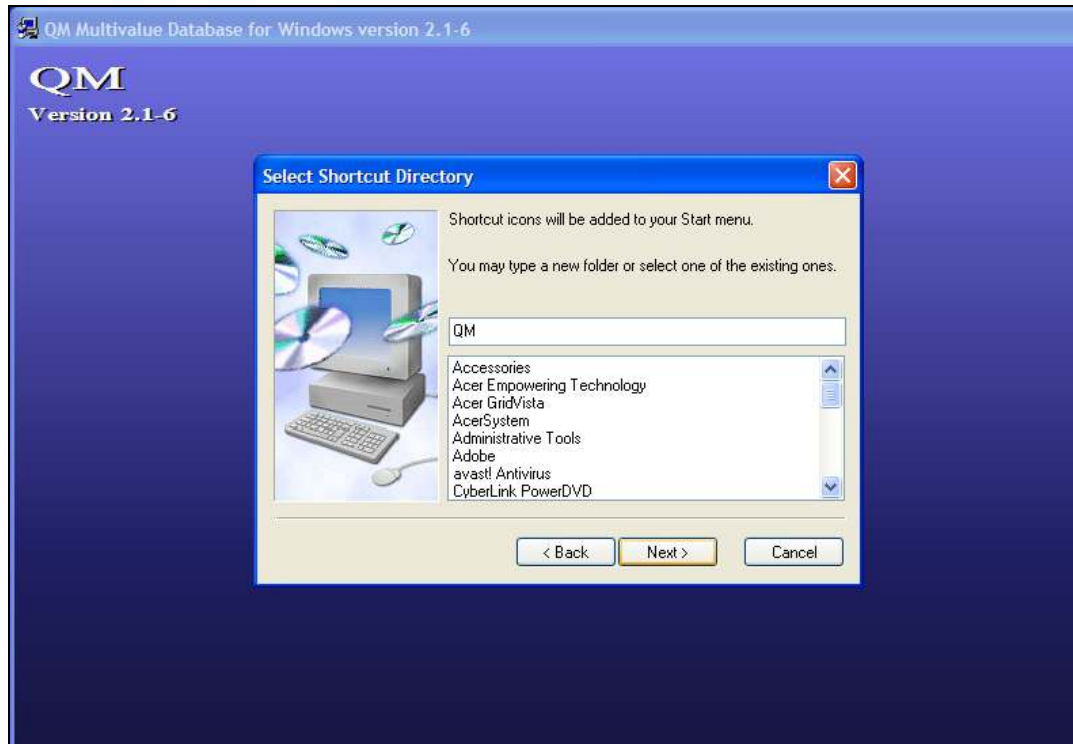
Slide 6

Slide notes: The default installation drive is "C" but this can be changed. Please retain the QMSYS folder as the correct installation option.



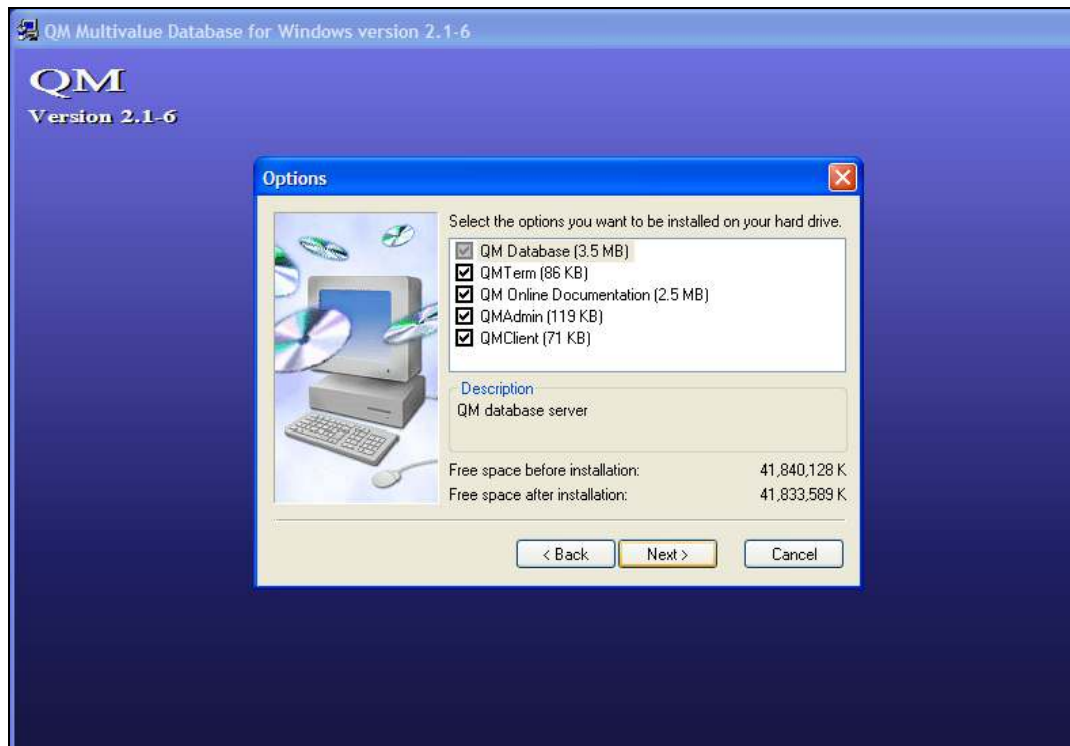
Slide 7

Slide notes: Choose NEXT.



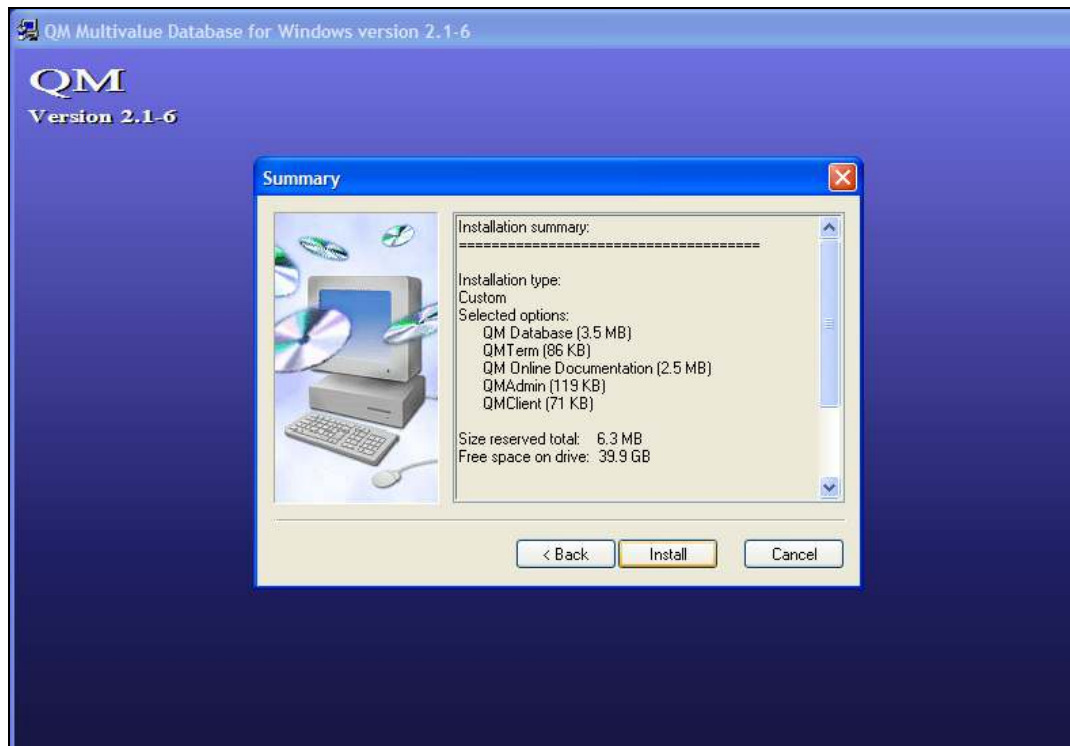
Slide 8

Slide notes: And NEXT again.



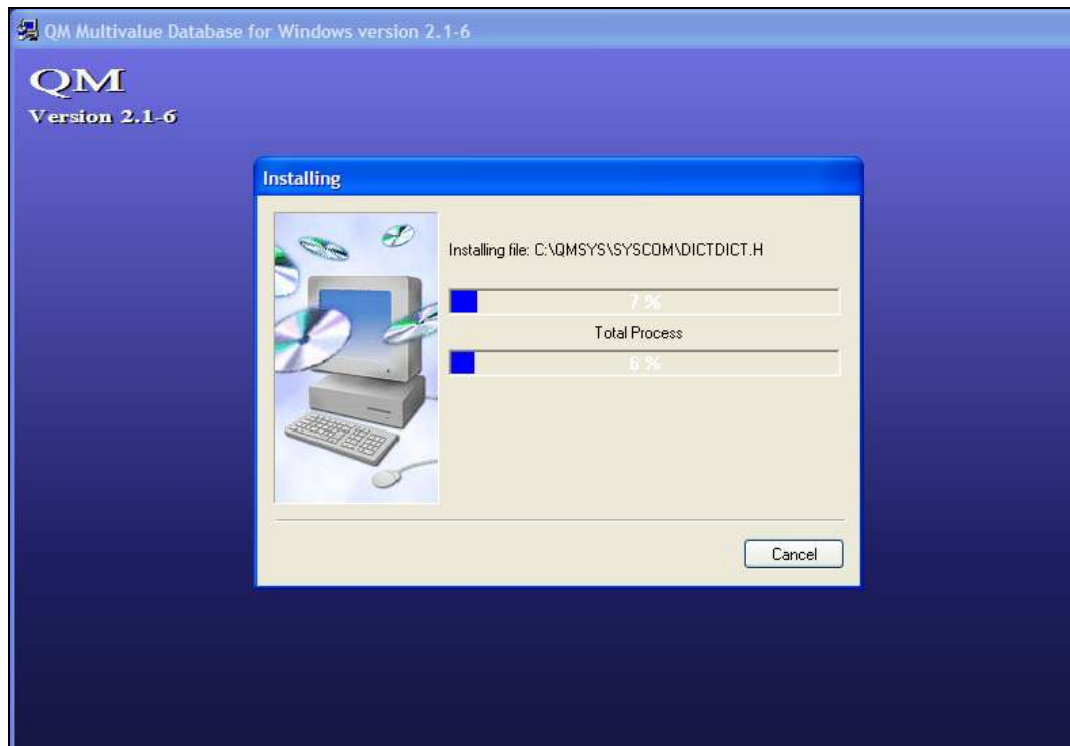
Slide 9

Slide notes: And NEXT again.



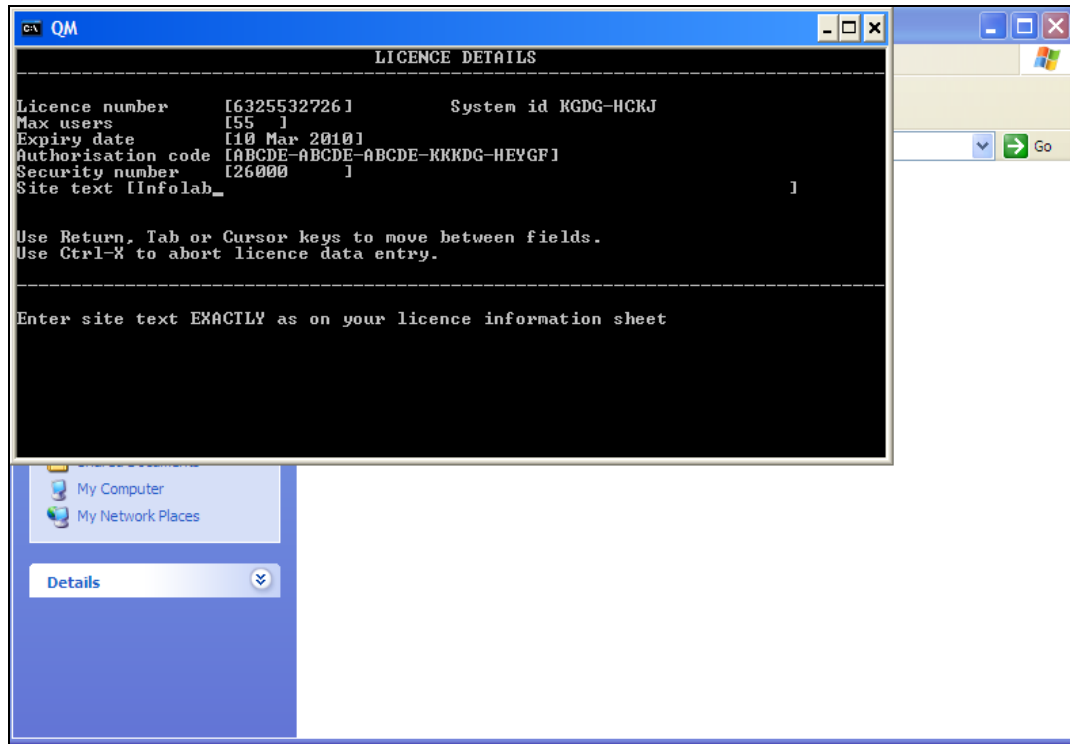
Slide 10

Slide notes: Choose INSTALL.



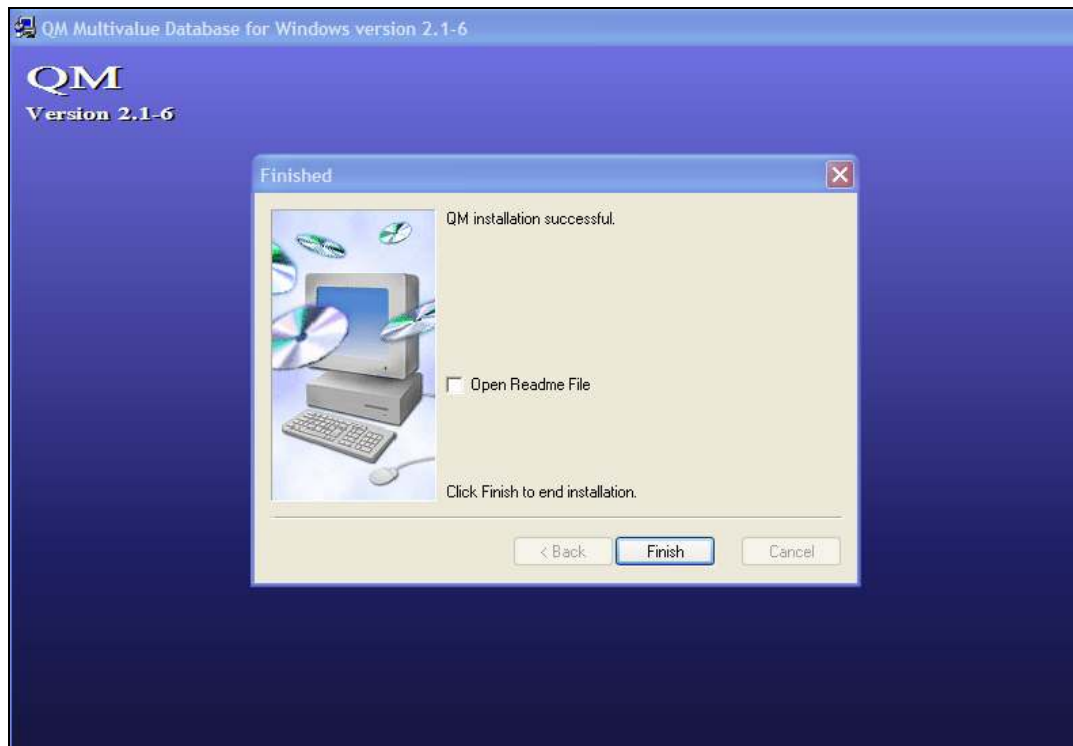
Slide 11

Slide notes:



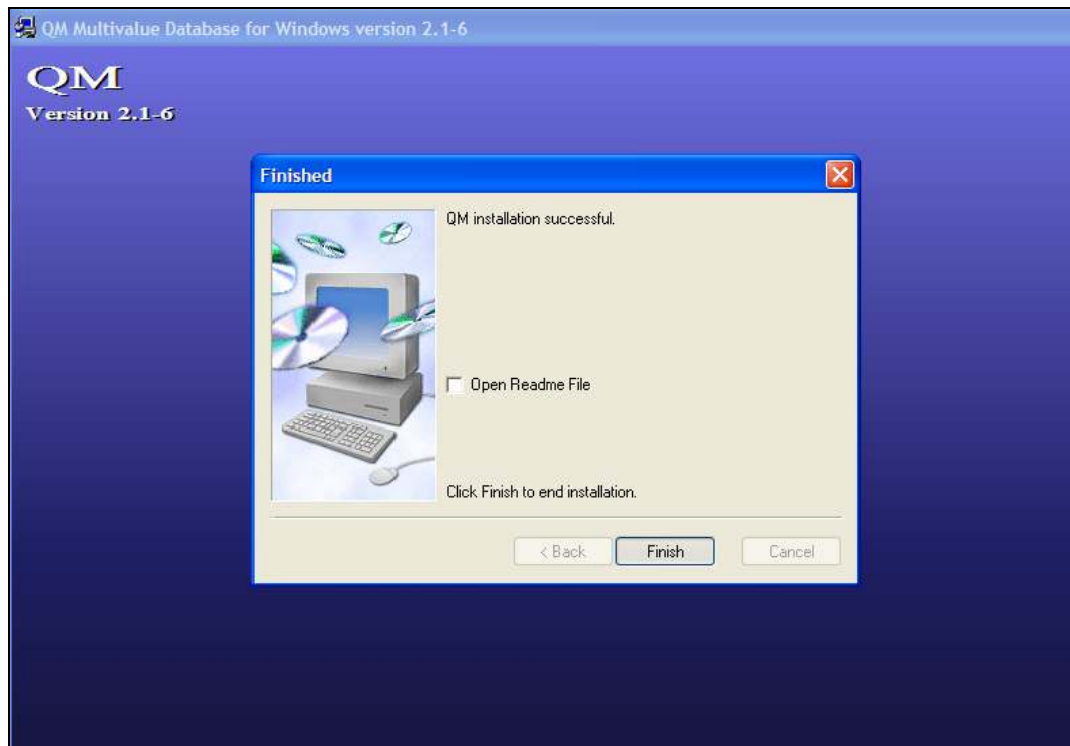
Slide 12

Slide notes: Now input the License information that has been provided to you on the License Information Sheet. If the License Information sheet is not yet available, then put PERSONAL at the License Number field, in which case it is possible to finish the installation, and then to come back later to input the License information details.



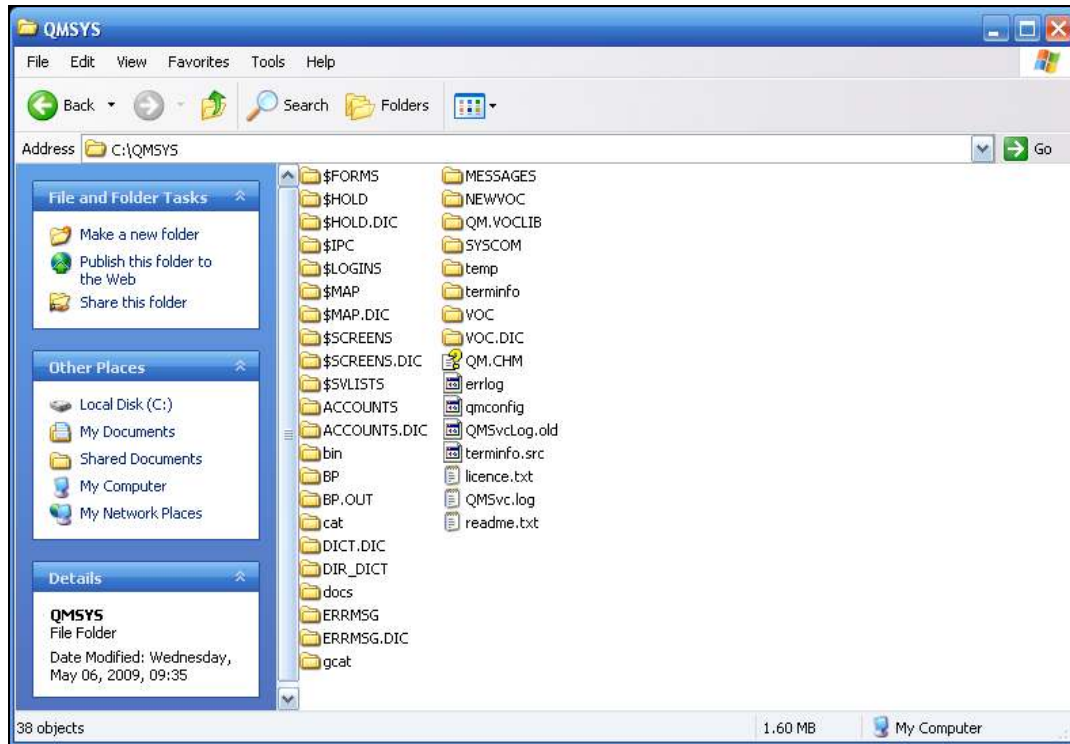
Slide 13

Slide notes:



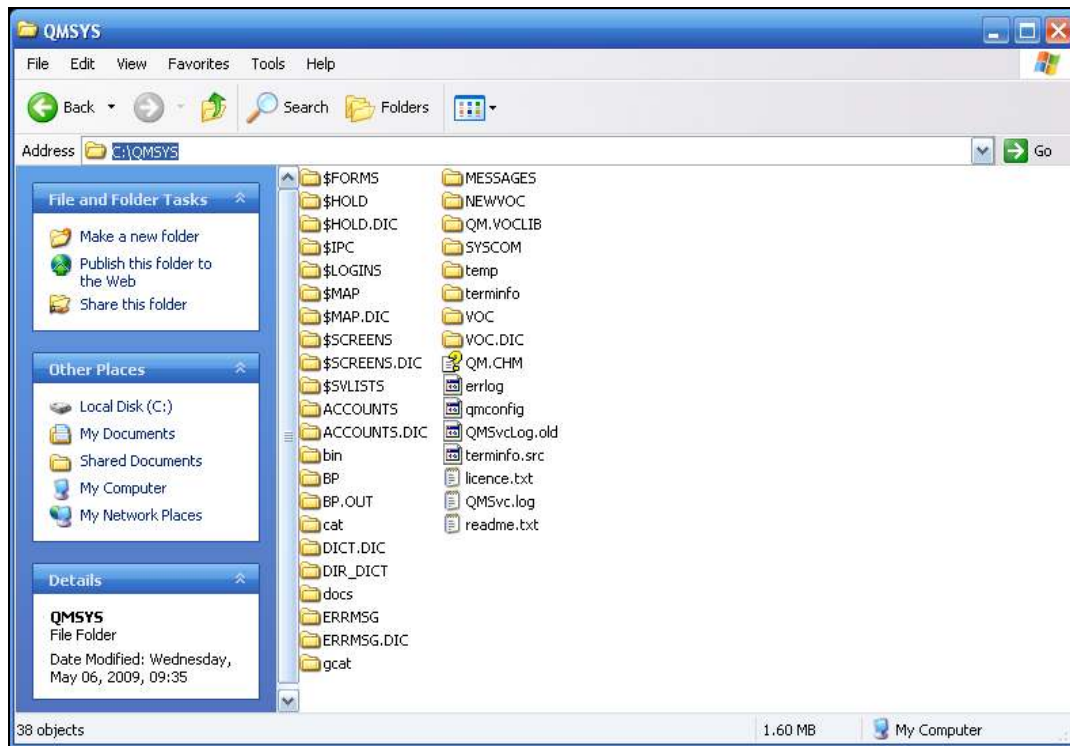
Slide 14

Slide notes: Your QM database is now installed.



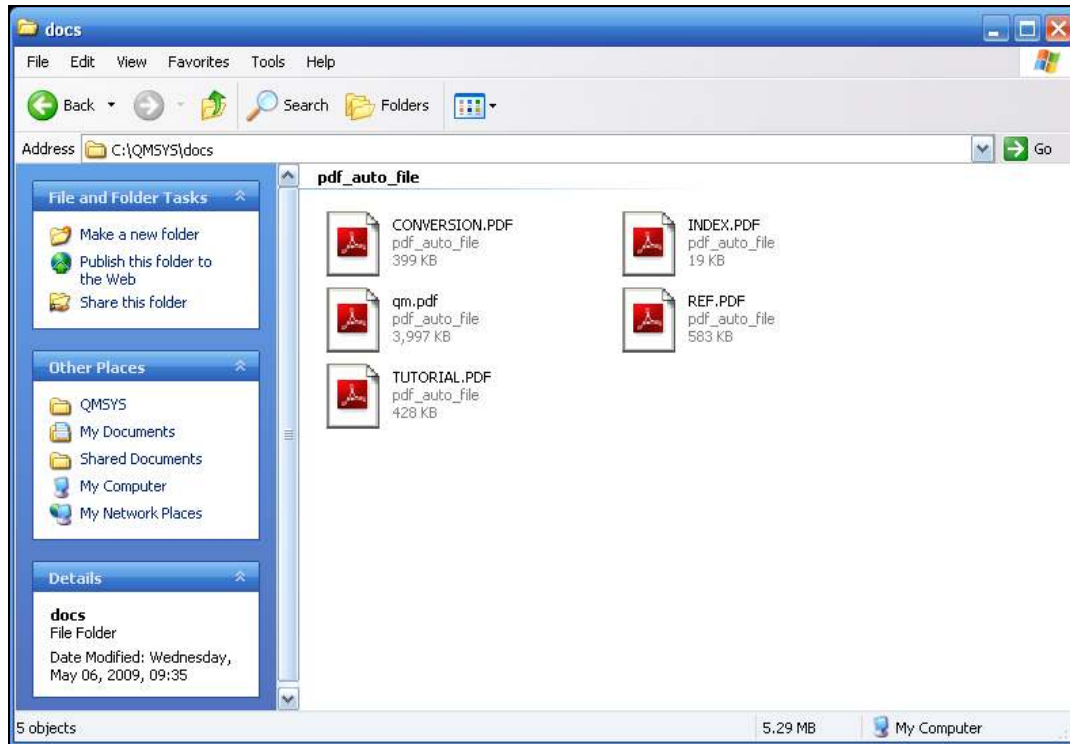
Slide 15

Slide notes: Next we will show the documentation for the QM database. In the installation folder, usually QMSYS, we find a folder called "docs".



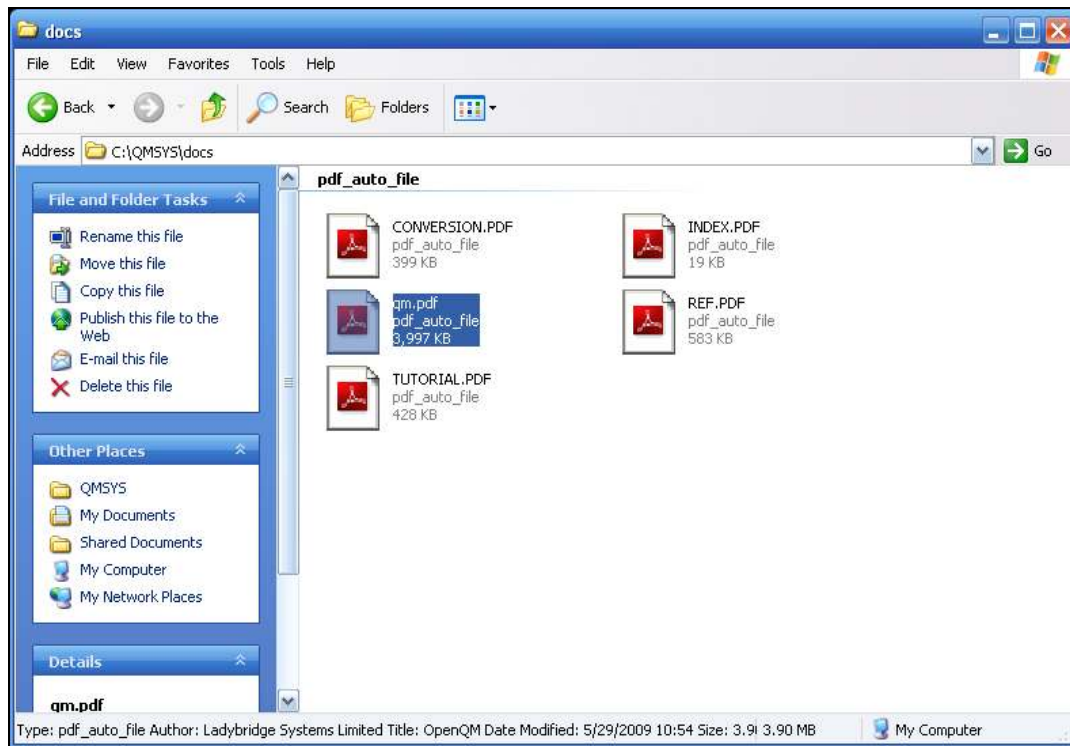
Slide 16

Slide notes:



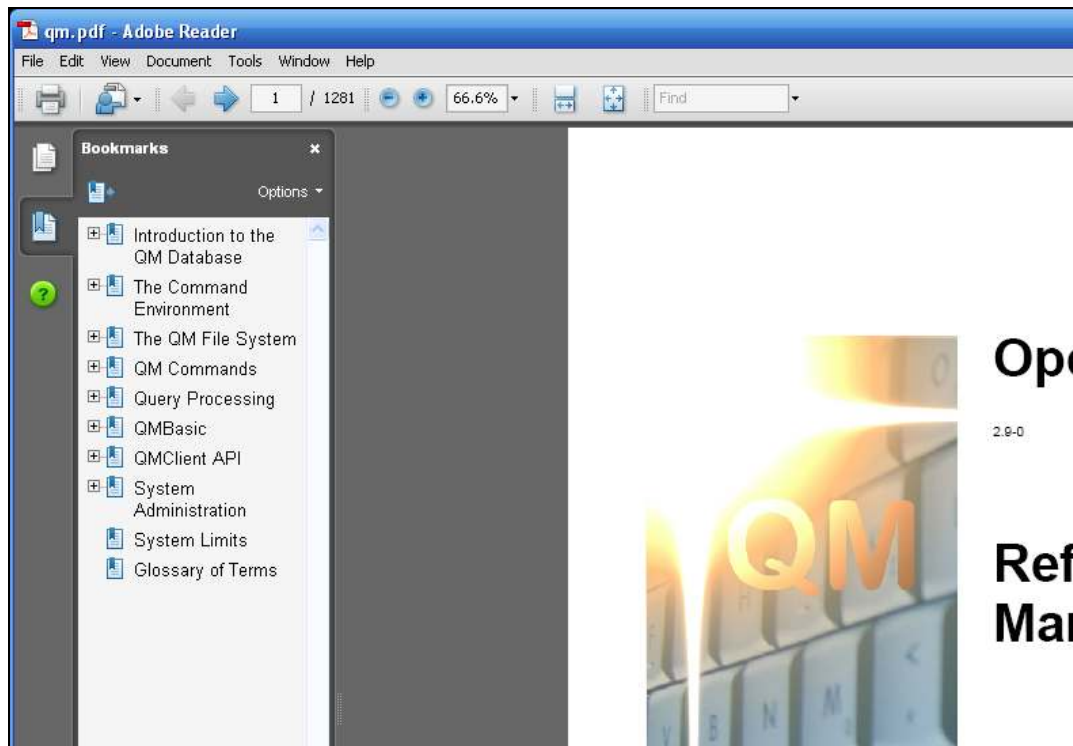
Slide 17

Slide notes: In this folder, there is an item called "qm.pdf". If you need to or want to know anything about the operation of the QM database, in addition to what is covered in the IES tutorials, then it will be found in this document.



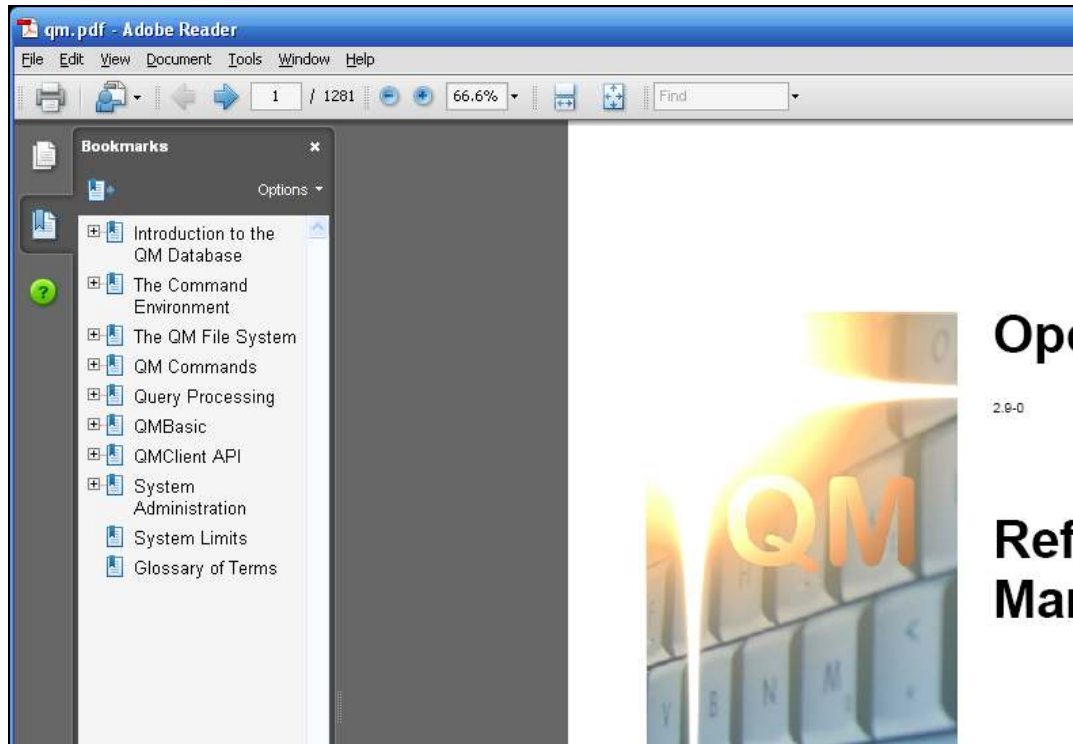
Slide 18

Slide notes:



Slide 19

Slide notes:



Slide 20

Slide notes: