



Slide 1

Slide notes: The QM Database is an underlying platform that IES employs in its operation. As such, we say that the QM Database service must be running for IES to work. On a Windows Server, the QM Database service is listed among other Windows Services.



Slide 2

Slide notes: It is useful to have a shortcut to Services on the Desktop of the Server, as shown here.



Slide 3

Slide notes: If there is no shortcut, then the Services may usually be found at Control Panel, Administrative Tools.



Slide 4

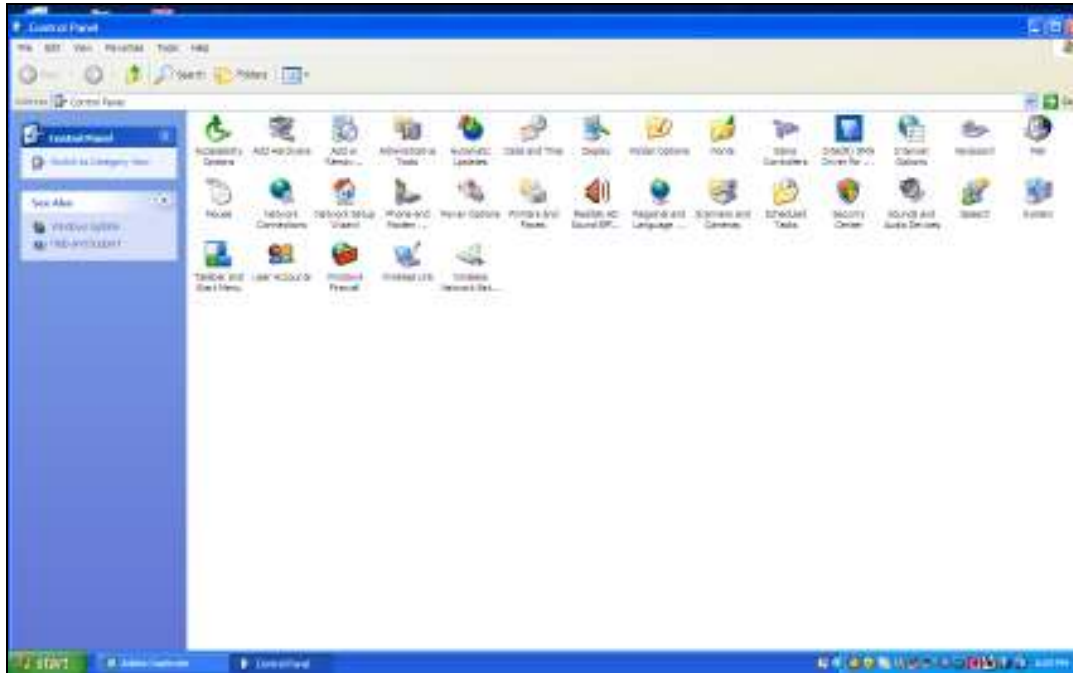
Slide notes:



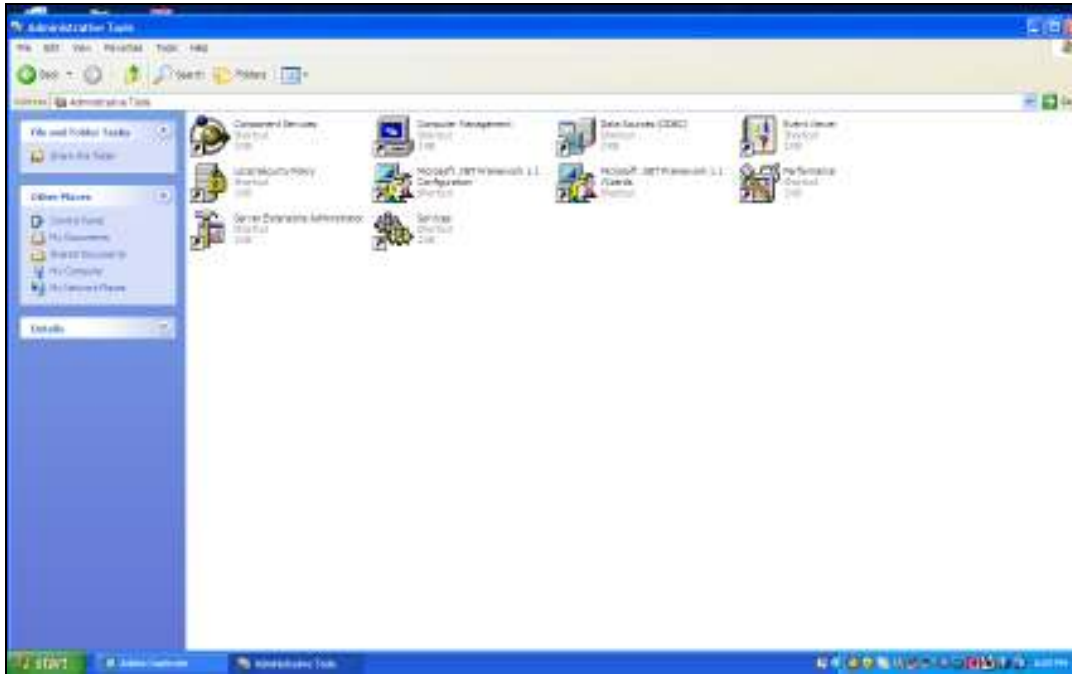
Slide 5
Slide notes:



Slide 6
Slide notes:

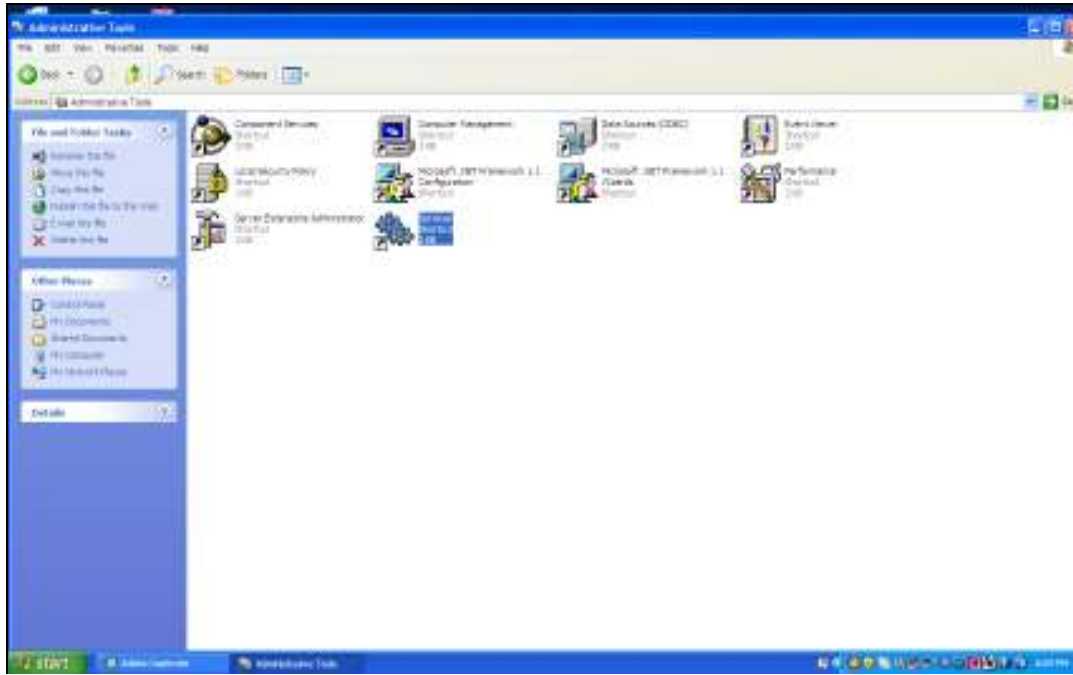


Slide 7
Slide notes:

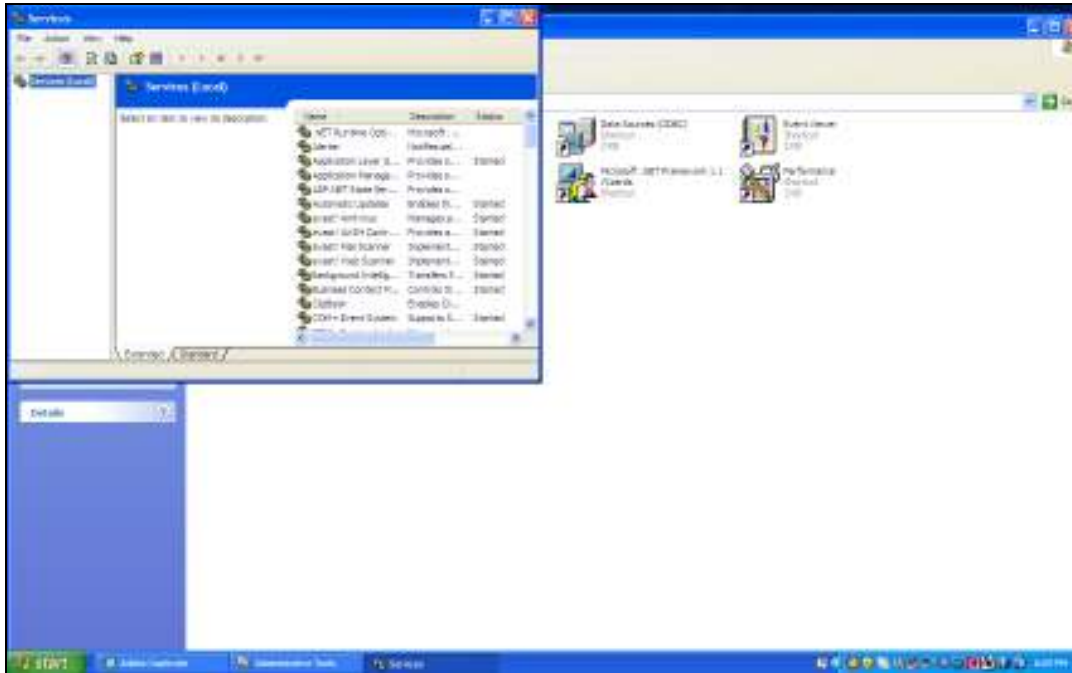


Slide 8

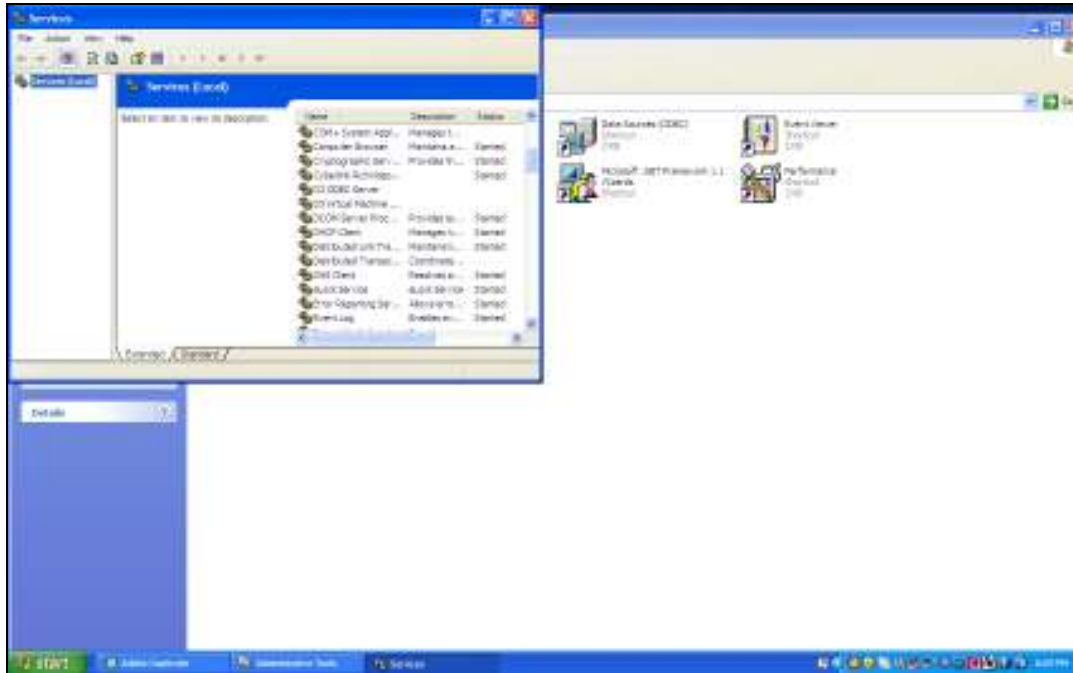
Slide notes: And here it is.



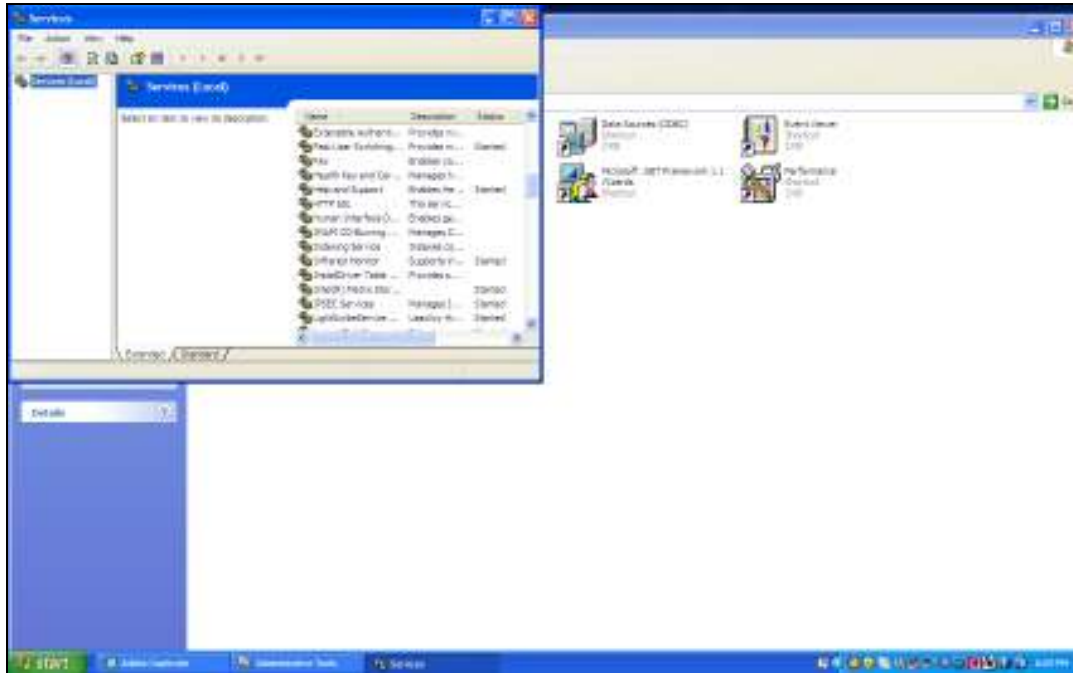
Slide 9
Slide notes:



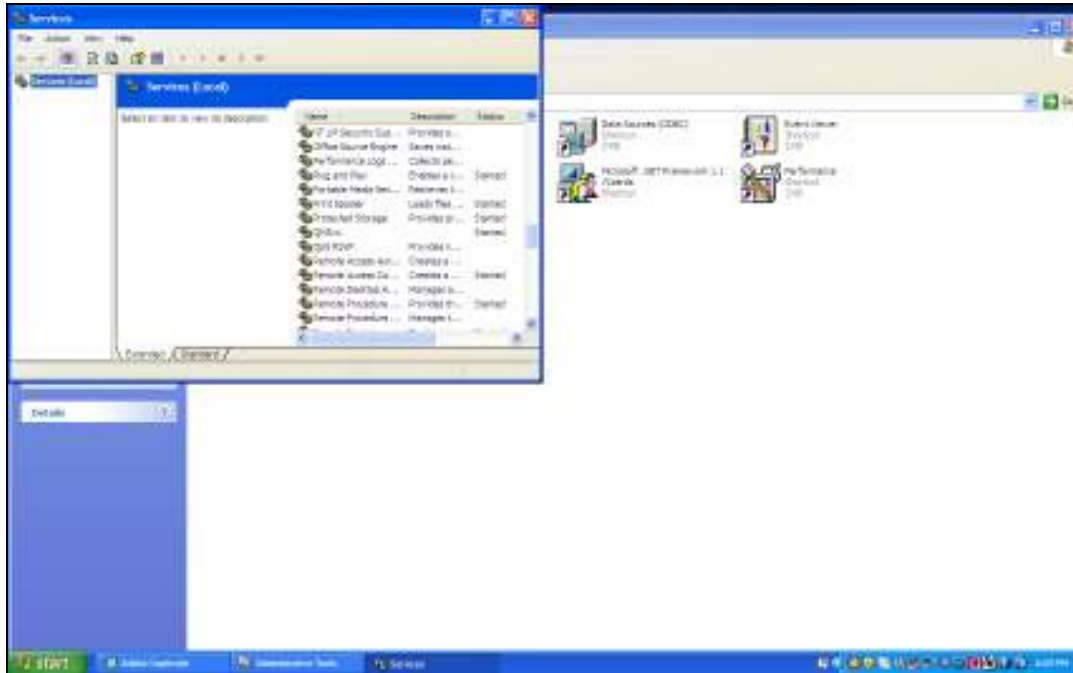
Slide 11
Slide notes:



Slide 12
Slide notes:

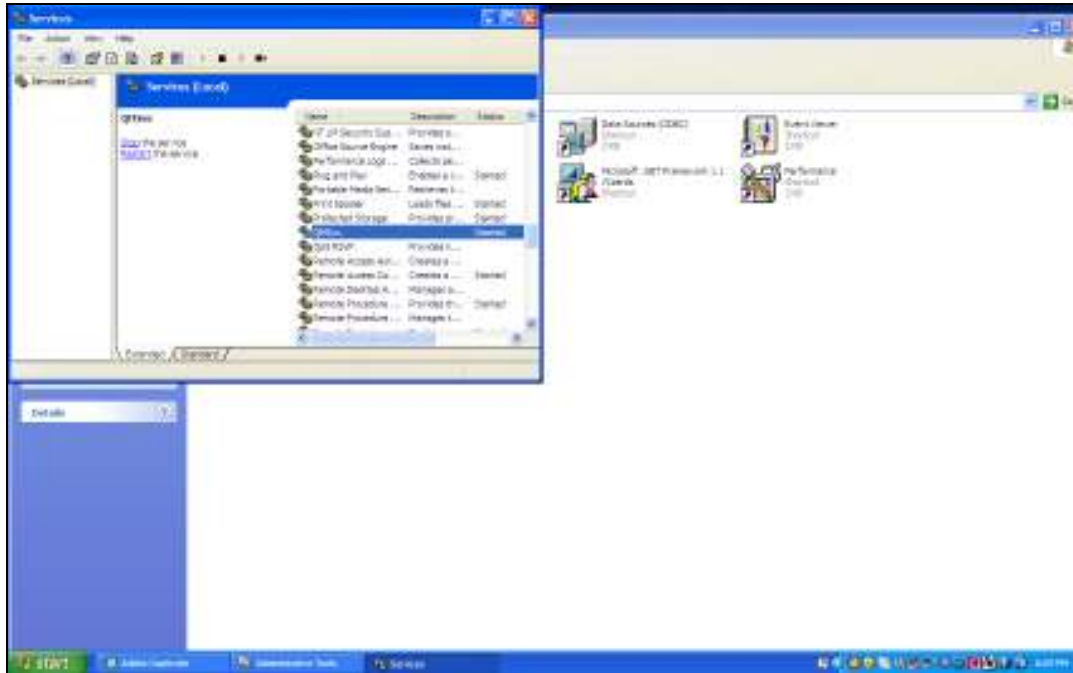


Slide 13
Slide notes:

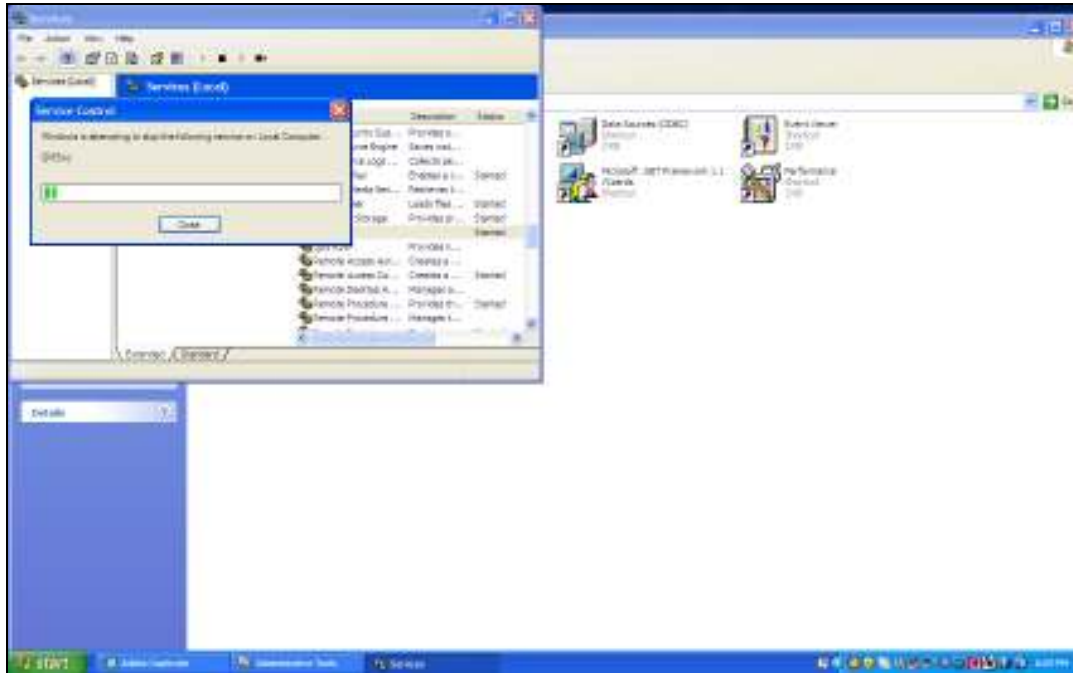


Slide 15

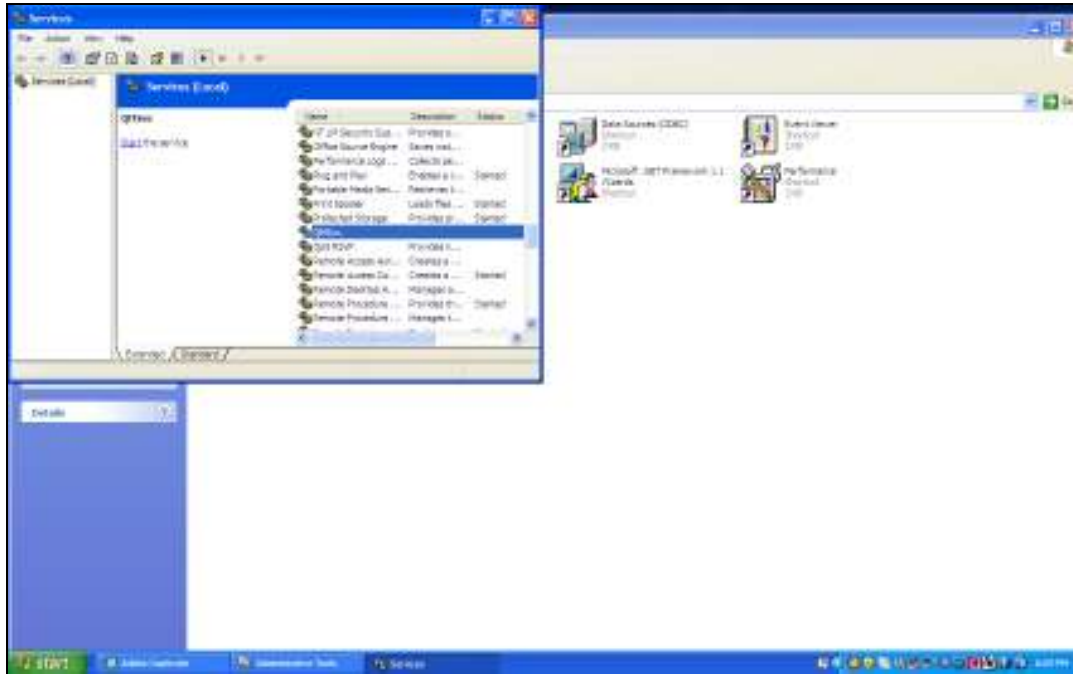
Slide notes: It's listed as QMSvc and it must be started to run, or stopped to stop the Service. It is a choice whether the Service is set as Automatic or Manual at the Service Properties. When the setting is Automatic, then the Service will be started automatically when the Server is booted, and shut down automatically when the Server is shut down. If the Service is set to Manual, then we need to start and stop it here.



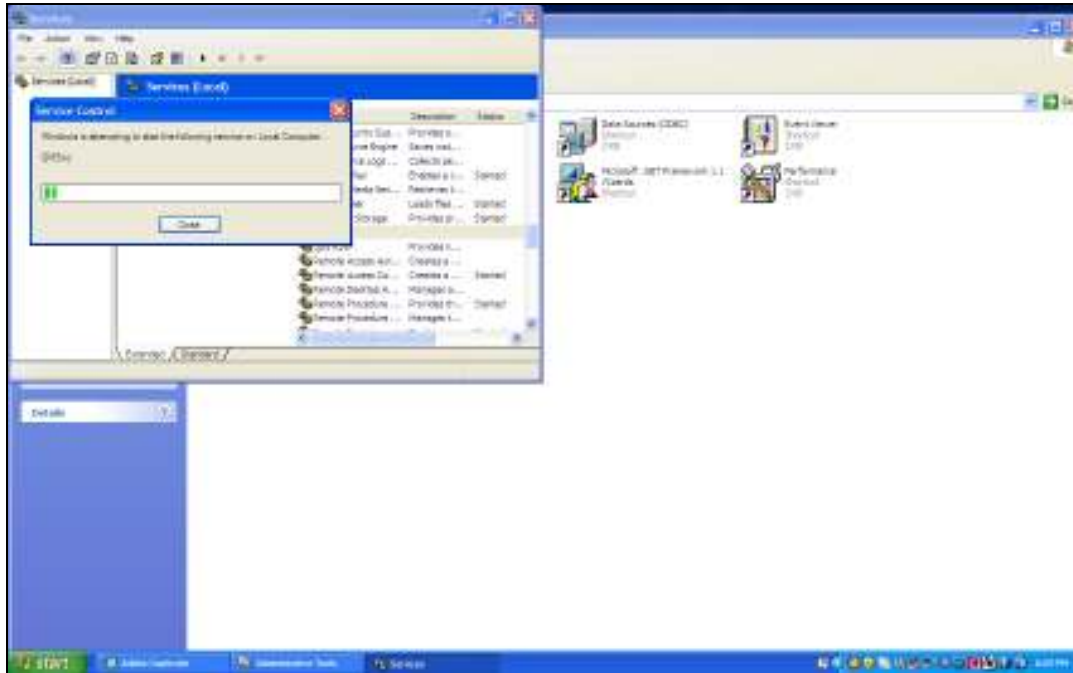
Slide 16
Slide notes:



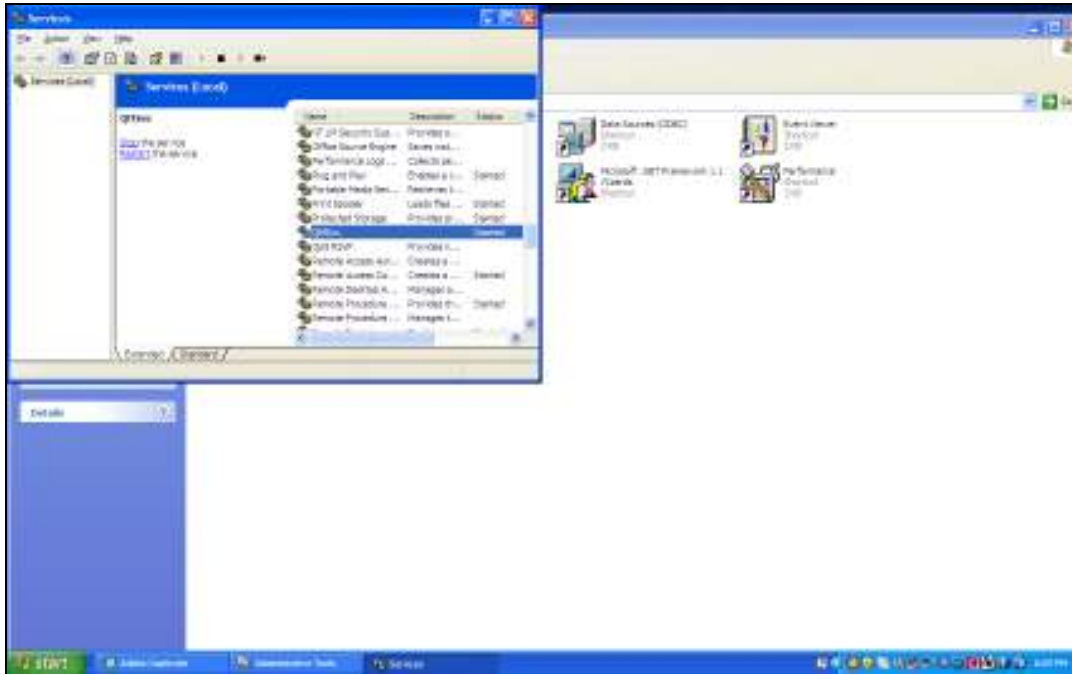
Slide 17
Slide notes:



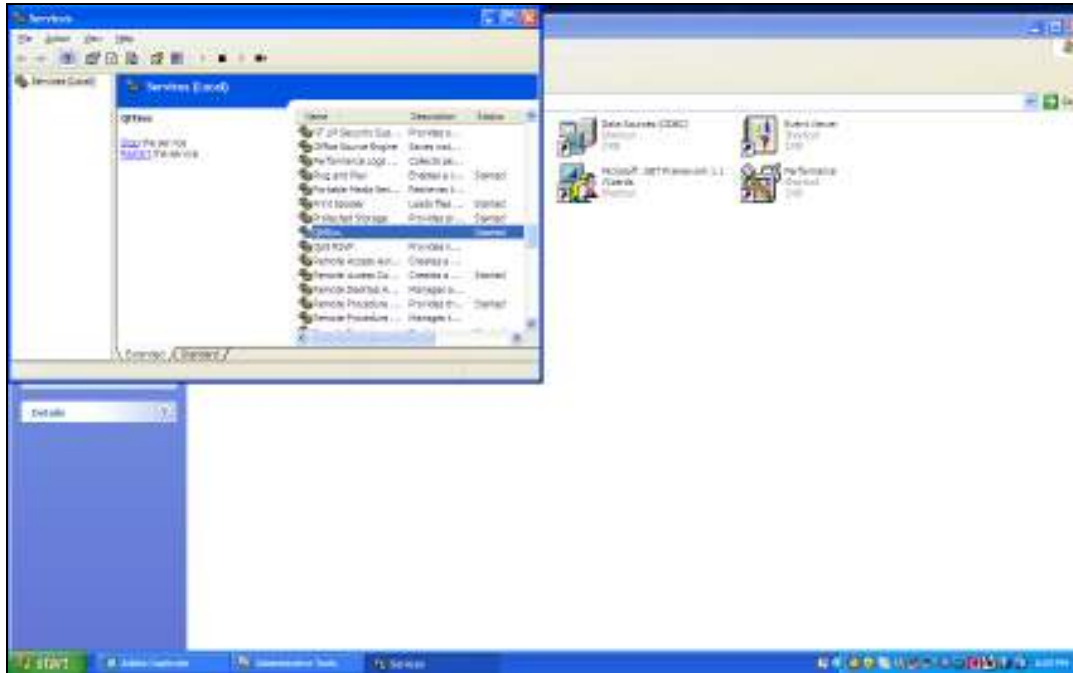
Slide 18
Slide notes:



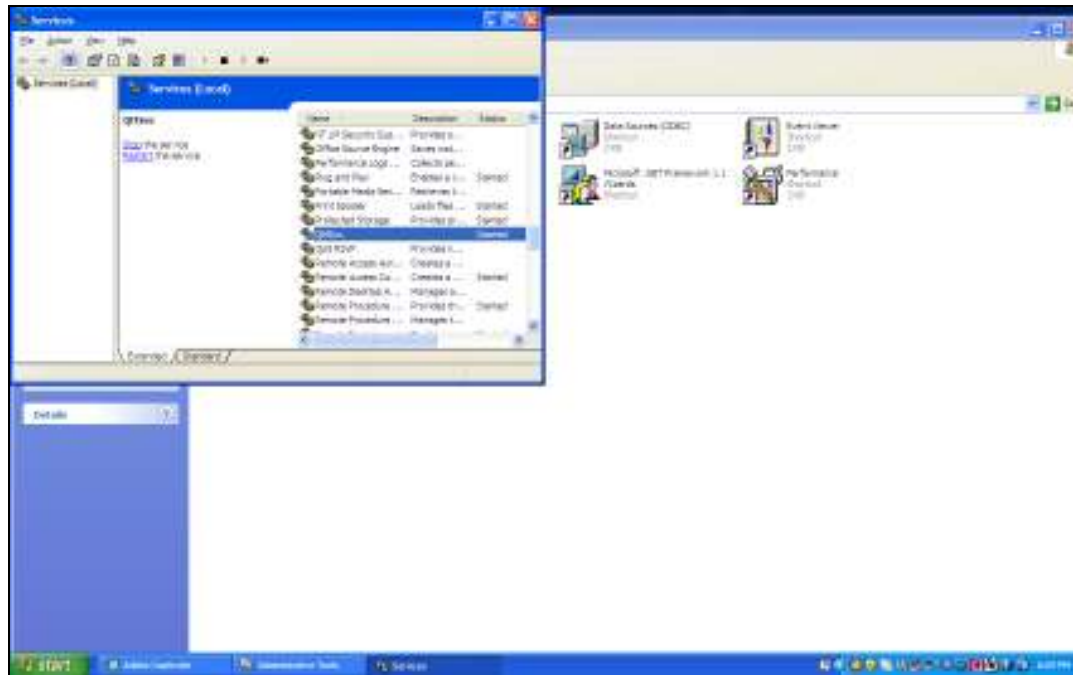
Slide 19
Slide notes:



Slide 20
Slide notes:

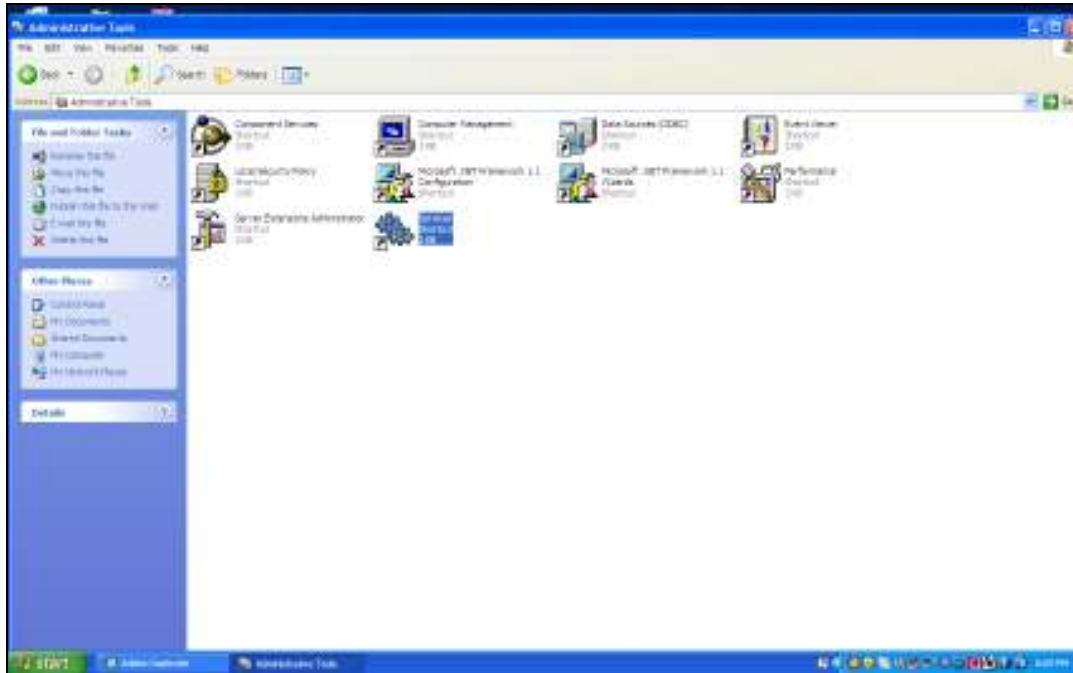


Slide 21
Slide notes:



Slide 22

Slide notes:



Slide 23
Slide notes:



Slide 24

Slide notes: So that is what is meant when we say that the QM Database Service must be running.