



Slide 1

Slide notes: In this tutorial we look at the option to re-build User Menus. From Systems Administration, we select Language Controls, and then "Re-build User Menus".

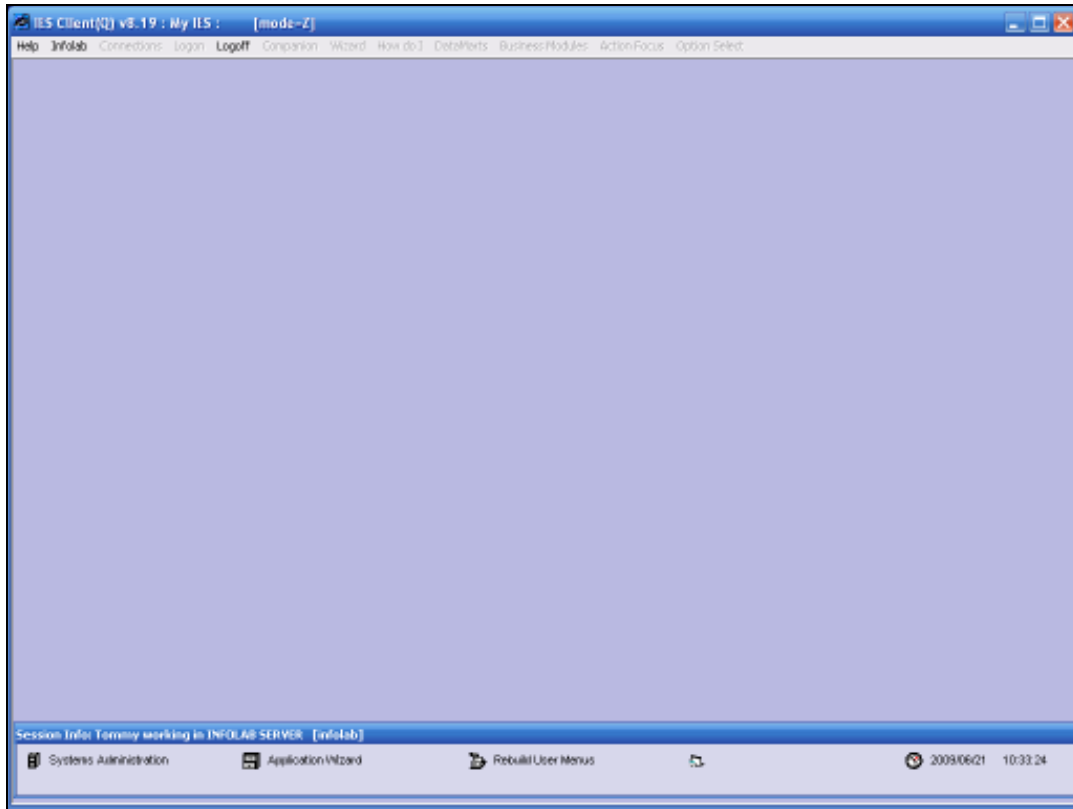


Slide 2
Slide notes:

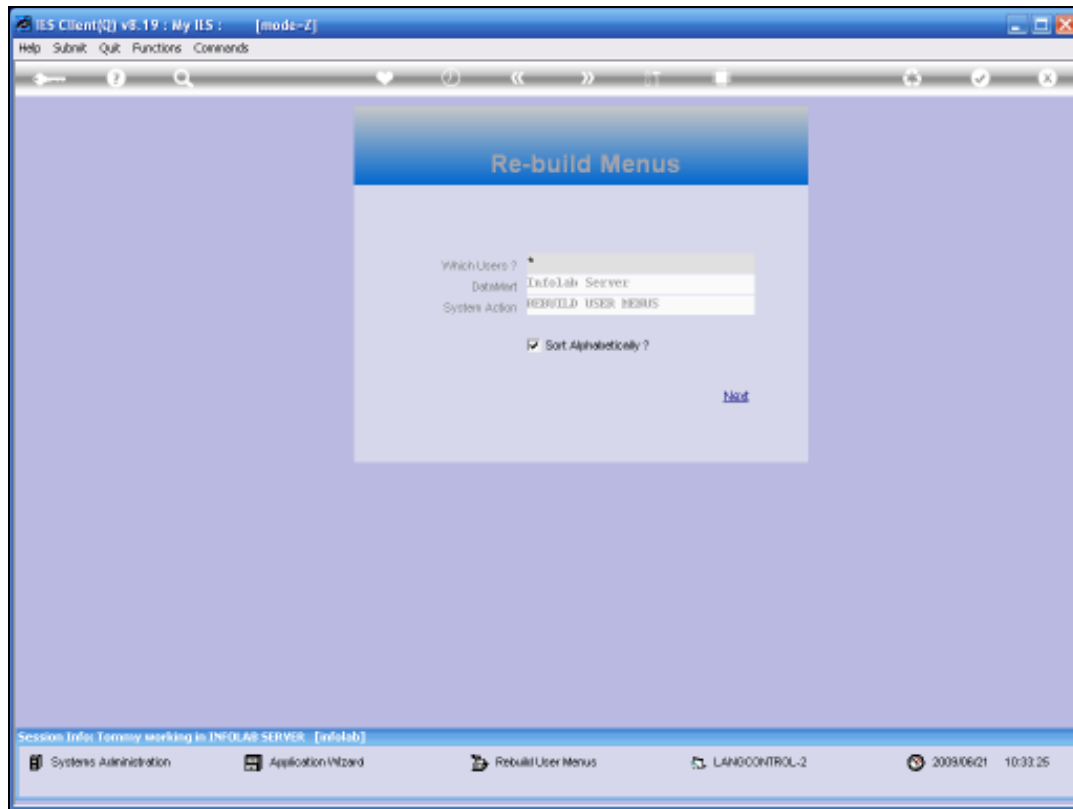


Slide 3

Slide notes: Actually, there is no real need or demand for this option, because the IES Menus are by and large presented in Wizard format, but if there are also a lot of local custom menus, then we may want to use this to re-build Menus for 1 or all Users when we have made changes to local menus.

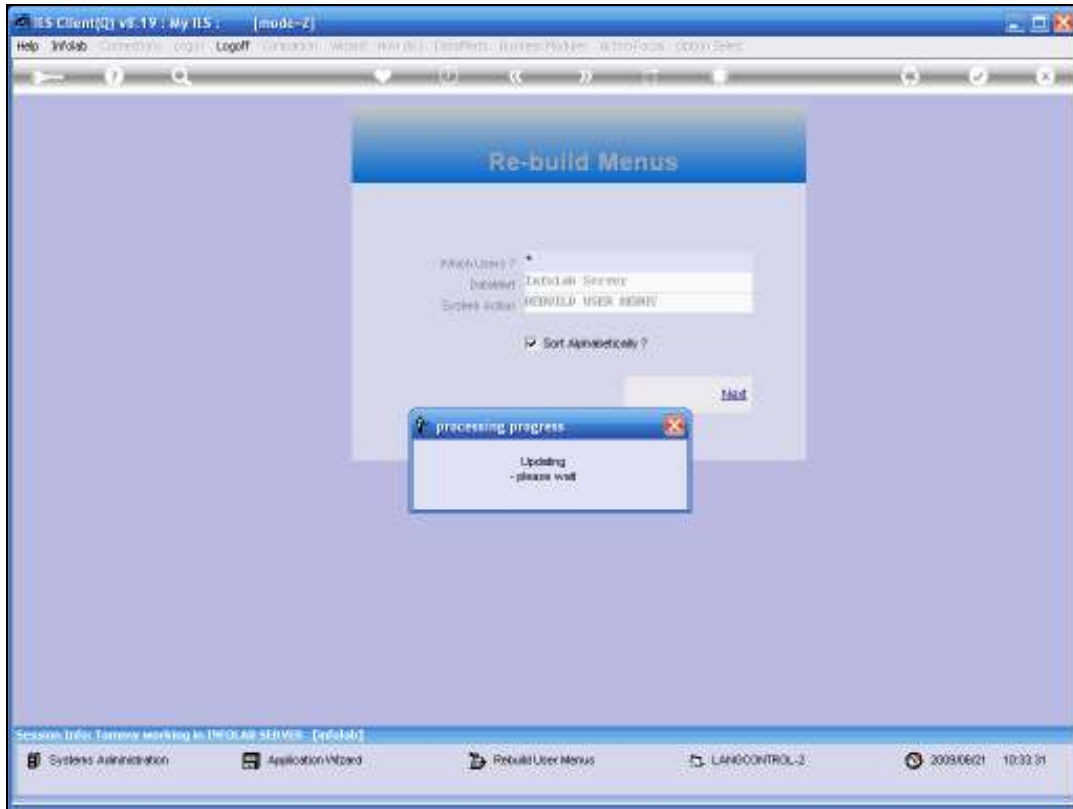


Slide 4
Slide notes:

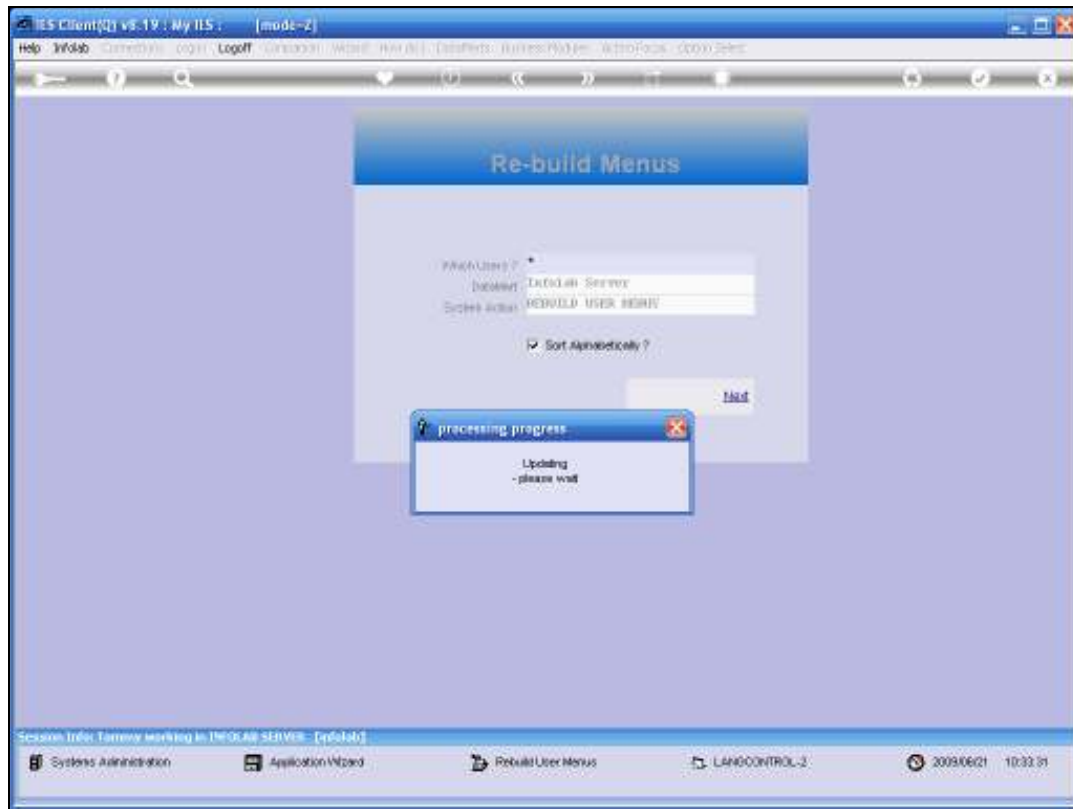


Slide 5

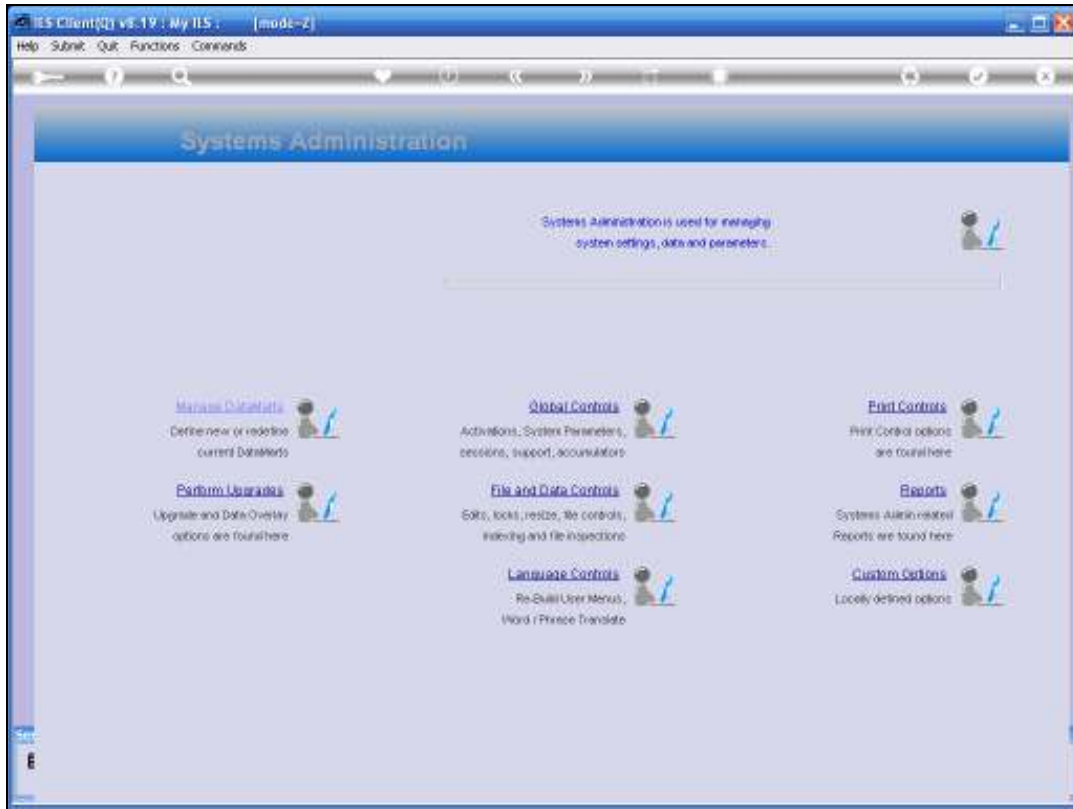
Slide notes: If we use the "*", then all Users are targeted for menu re-build in this Datamart, or else we can select a single User Code. We may note that User Menus are dynamic and automatic whenever we make changes to User Access profiles, and it is not necessary to re-build the Menus for any other reason than for Local Custom Menus that may be present, and especially if these Local Custom Menus are offered in different languages. Therefore, in a standard system, there is no need to use this function.



Slide 6
Slide notes:



Slide 7
Slide notes:



Slide 8
Slide notes: