

Slide 1

Slide notes: In this tutorial we discuss Re-generation of Data Indexes. From the Systems Administration menu, we choose File and Data Controls, and then "Indexes Re-generate".

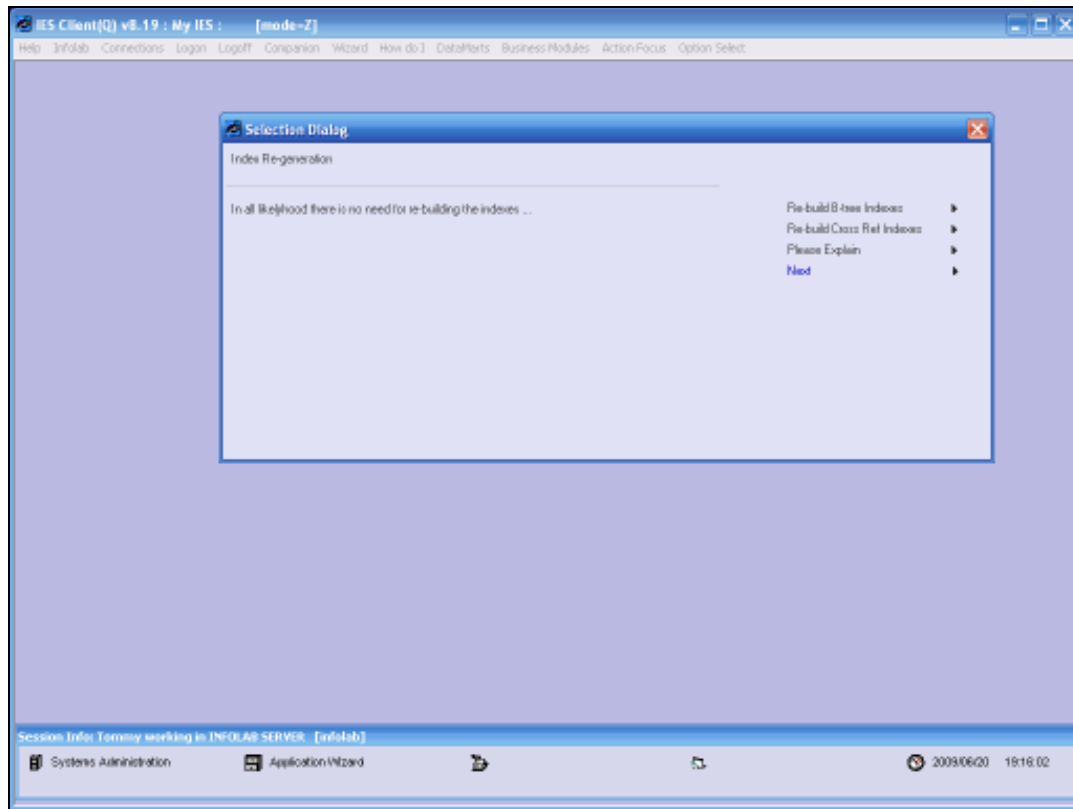


Slide 2
 Slide notes:



Slide 3

Slide notes:



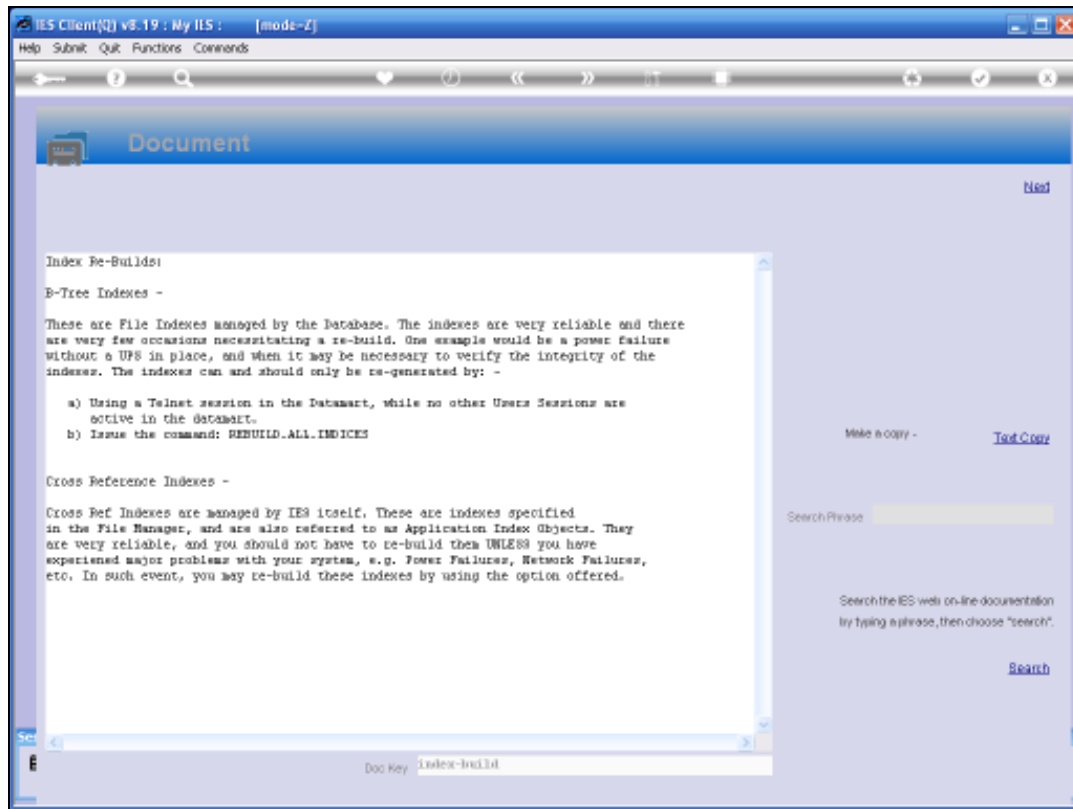
Slide 4

Slide notes: Data Indexes or Indices are in place on many Data Tables, called Files, to facilitate faster access to data. These indexes come in 2 types, i.e. B Tree Indexes and Cross Reference Indexes. Both types are very reliable and there is seldom any need to re-generate them, except possibly in the case of a power failure without a UPS, and consequent data corruption. In such a case, it is better to revert to a Backup anyway, in which case the Indexes will be created again automatically.



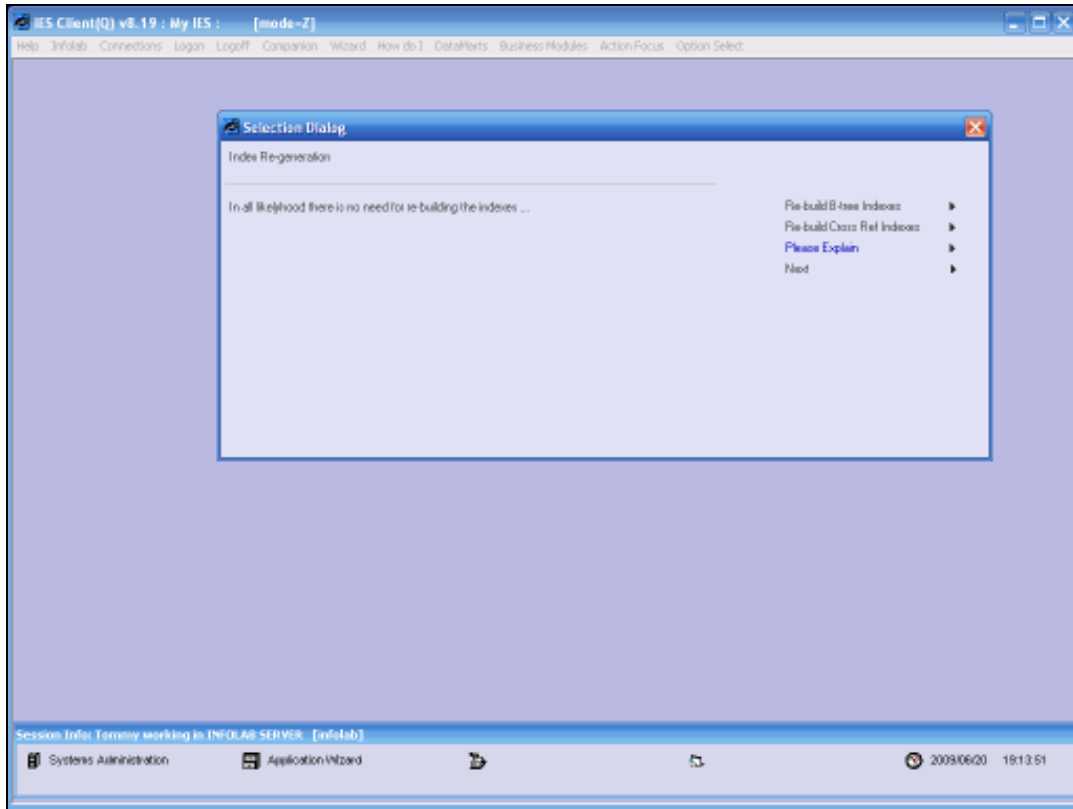
Slide 5

Slide notes: Nevertheless, there is provision for re-construction of both types of Indexes, in case of a valid need to do so. The Help document explains accordingly.



Slide 6

Slide notes: To re-build either type of Index, please follow the instructions as explained here. For B Tree Indexes, use the REBUILD.ALL.INDICES command with a Console or Telnet session, in each Datamart where necessary. For Cross Reference re-builds, use the wizard option to 'Re-build Cross Ref Indexes'.

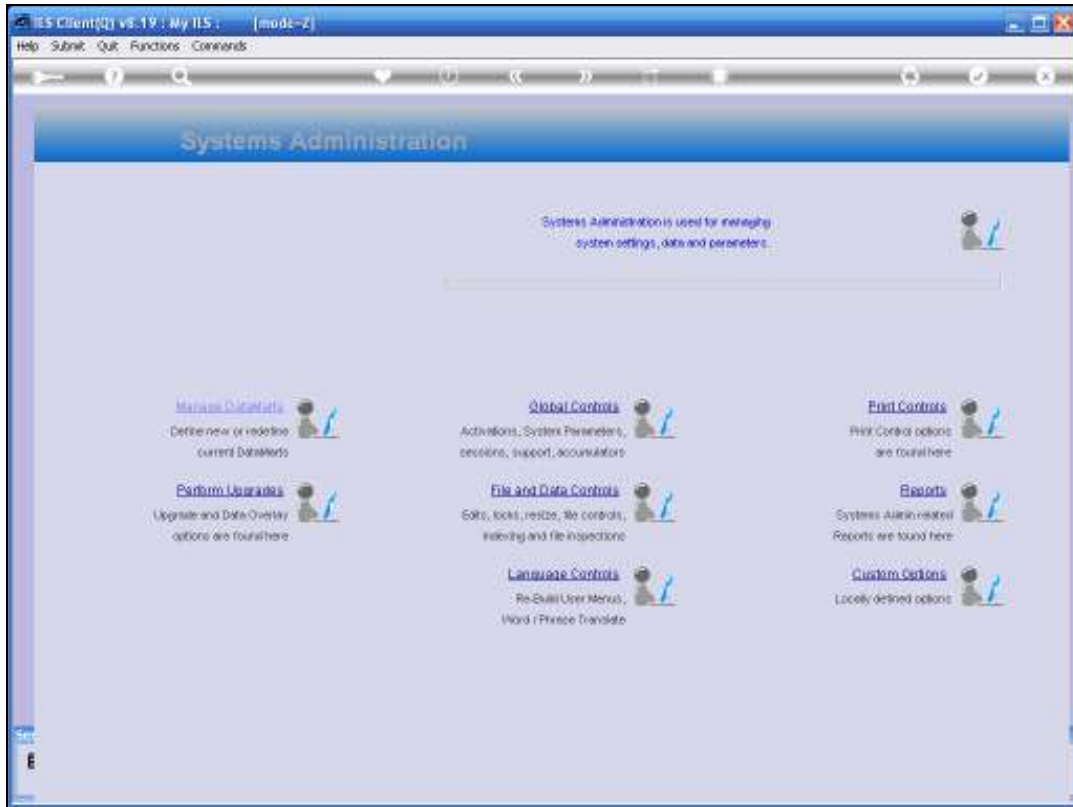


Slide 7
Slide notes:



Slide 8

Slide notes:



Slide 9
Slide notes: