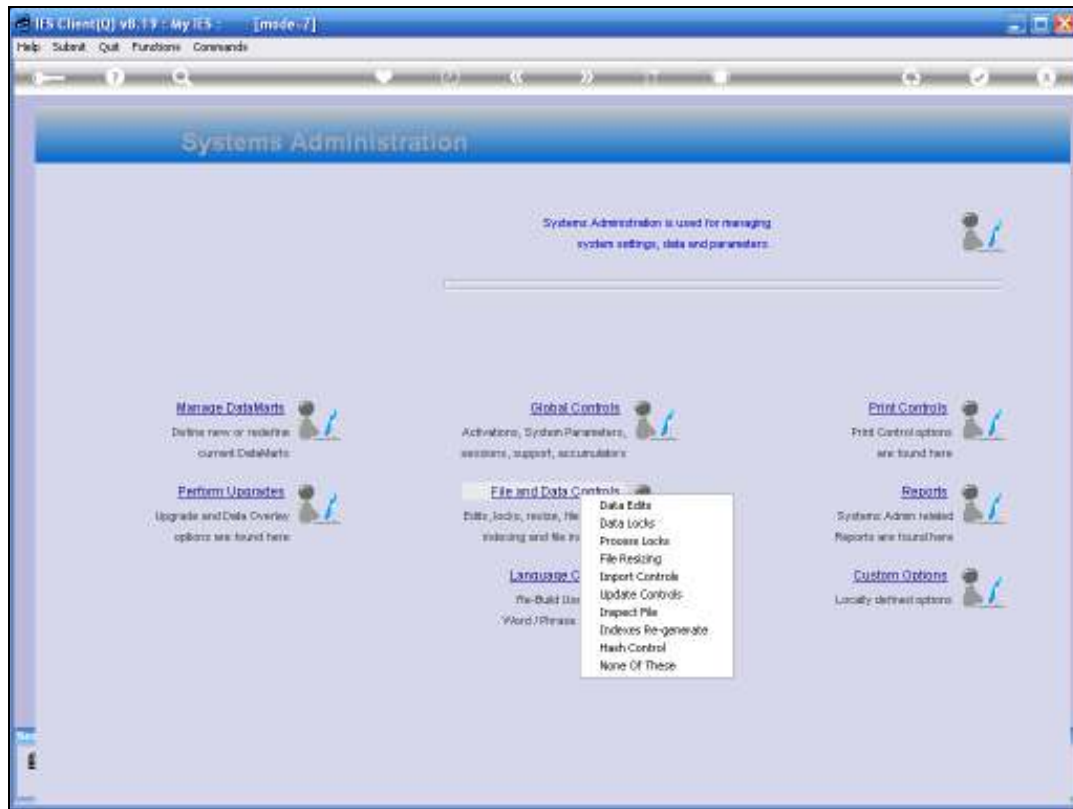




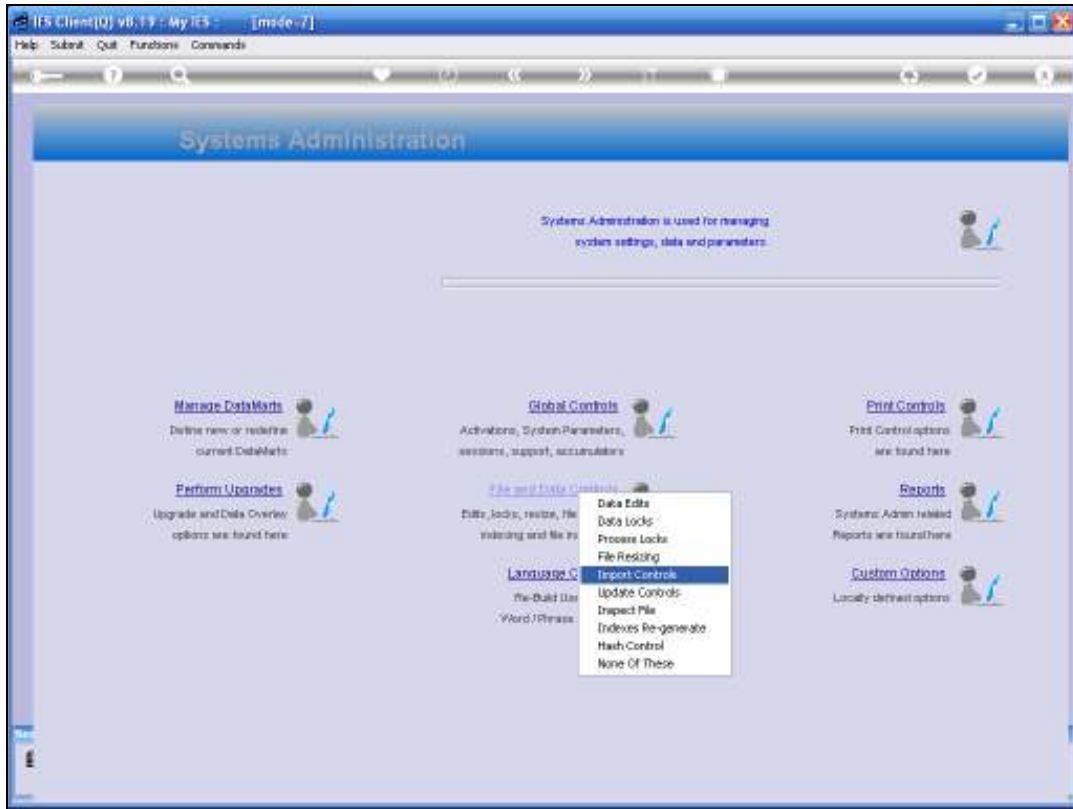
Slide 1

Slide notes: There are a number of options in IES where Data can easily be imported from Spread Sheet or other Files. In most cases, the system is already equipped to receive these Data Imports seamlessly. However, there are also options for Users with the necessary access, to import Data directly into a targeted File of choice. For this, the system provides a control where we can list which FileNames are allowed to be used in this manner, and this is a protective measure for the system so that a User cannot by mistake import data into a Masterfile and in the process corrupt system data.

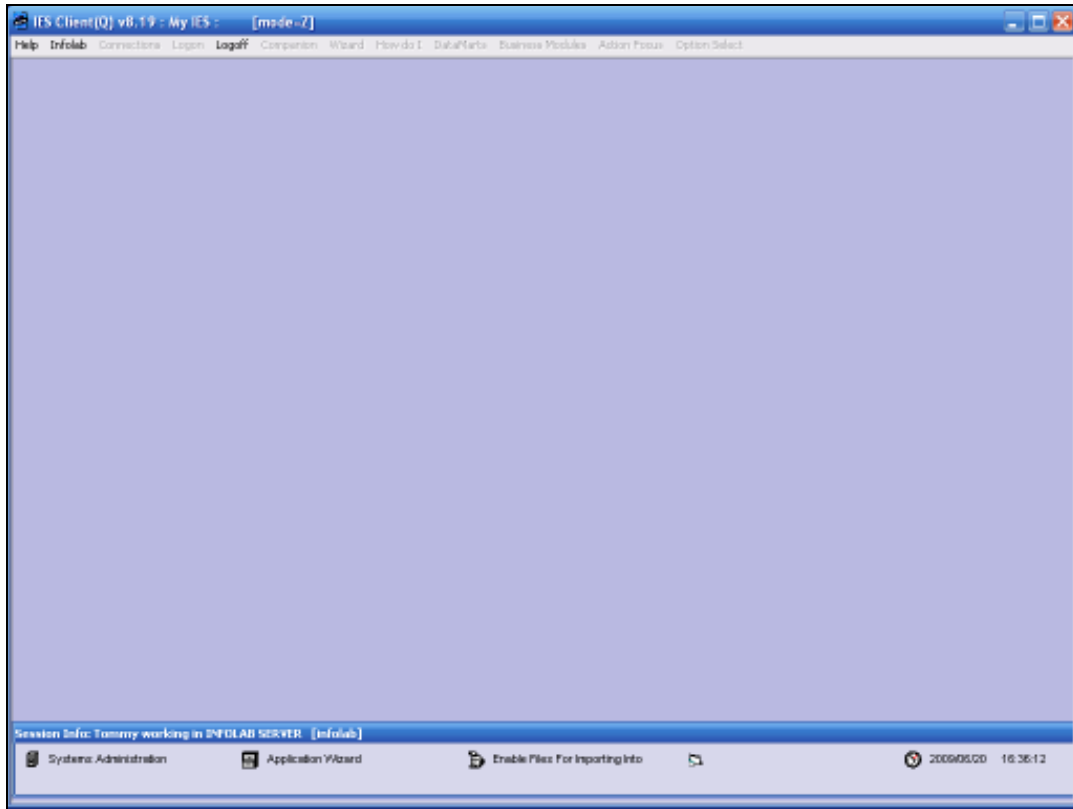


Slide 2

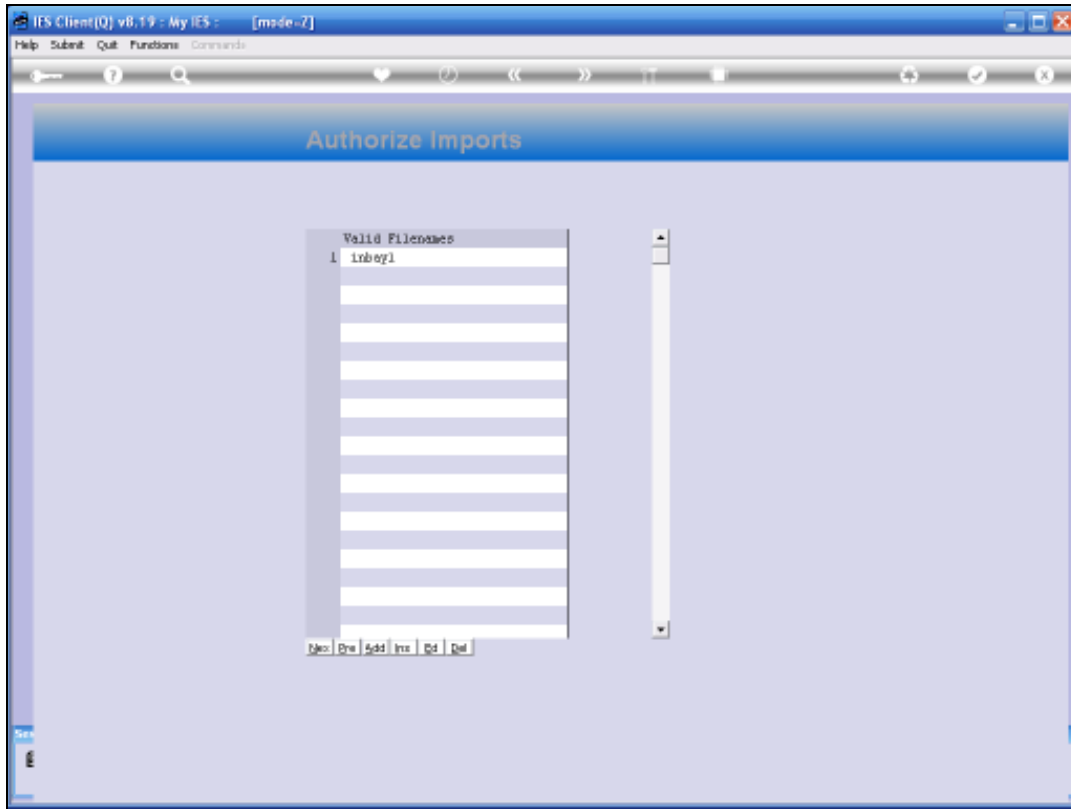
Slide notes: From the Systems Administration menu, we select File and Data Controls, and then we select Import Controls.



Slide 3
Slide notes:

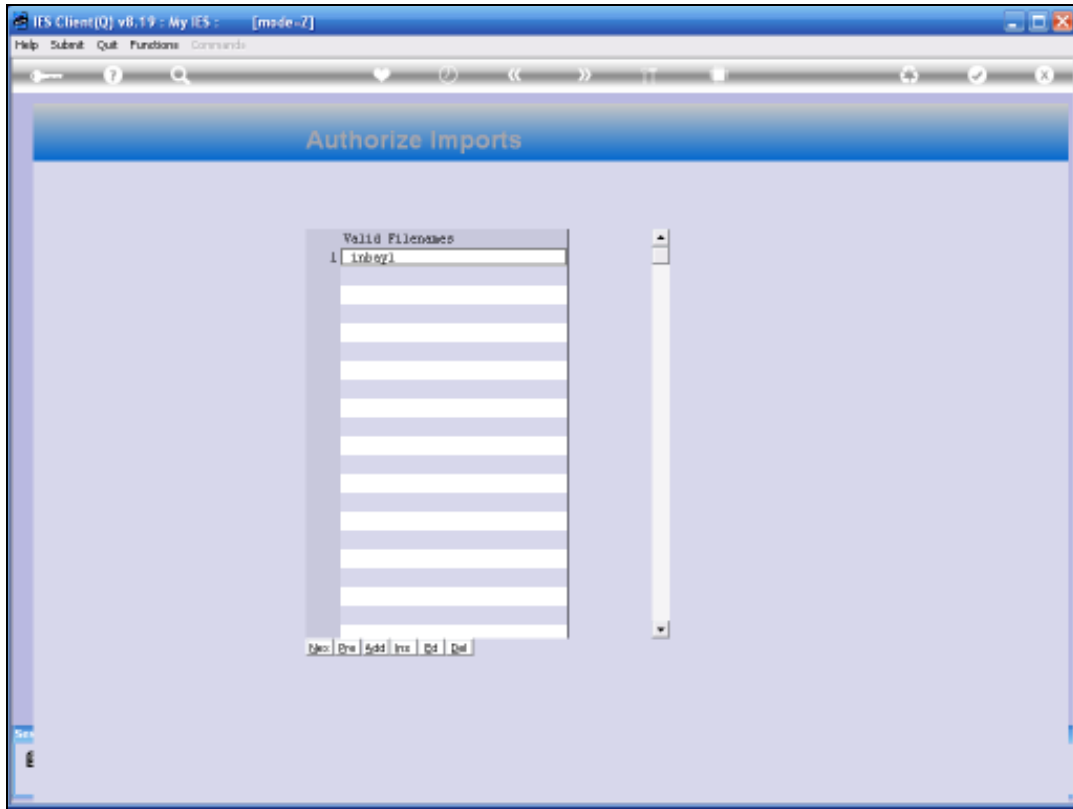


Slide 4
Slide notes:



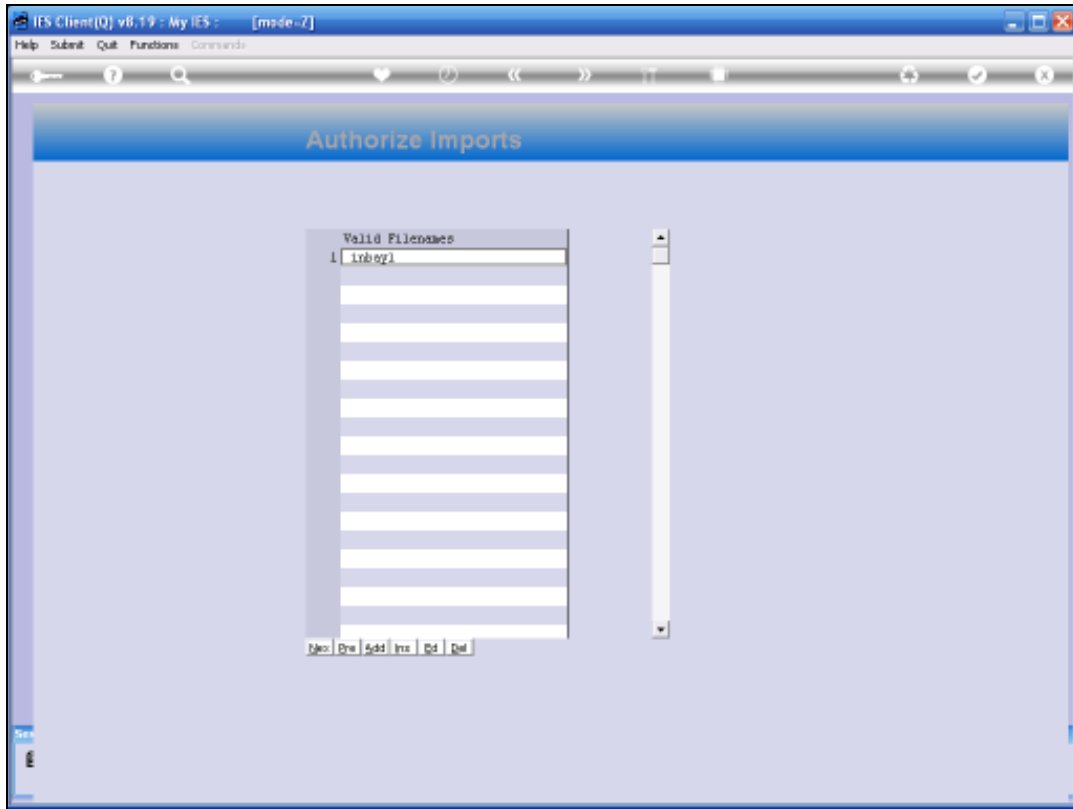
Slide 5

Slide notes: On this register we may list explicit Filenames into which Users may import data directly. For standard import options, where the system is already programmed for Data Imports, there is no need to list the import FileNames.



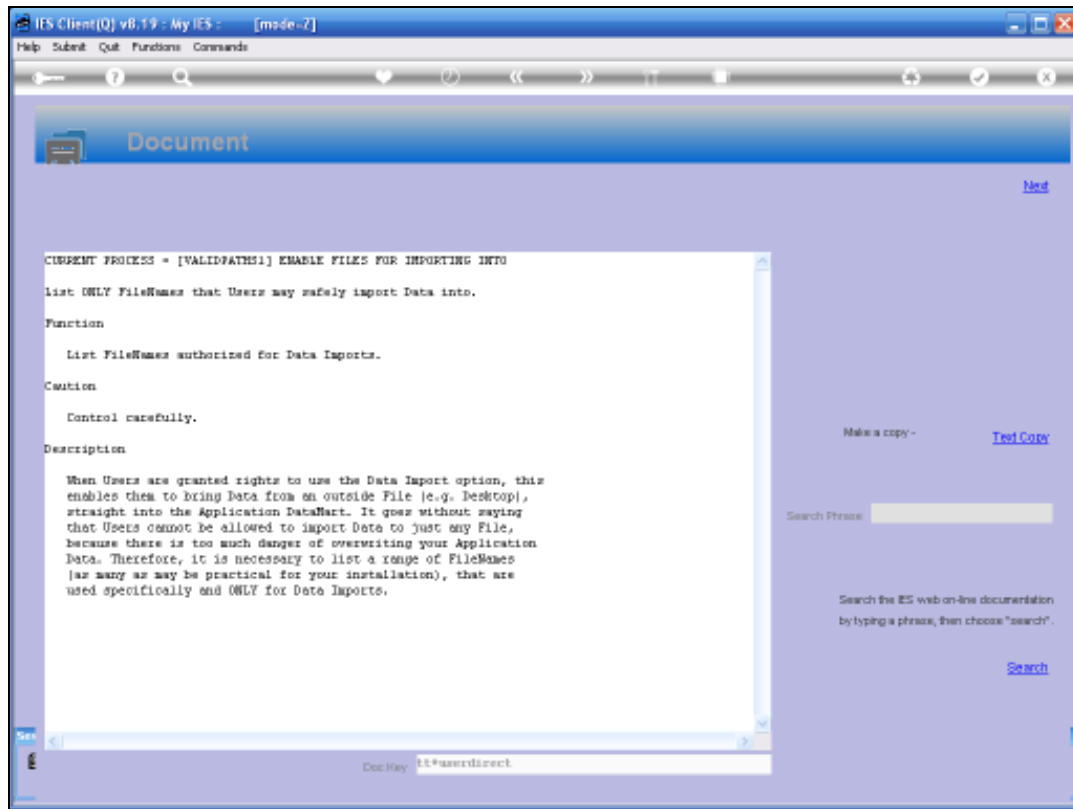
Slide 6

Slide notes:



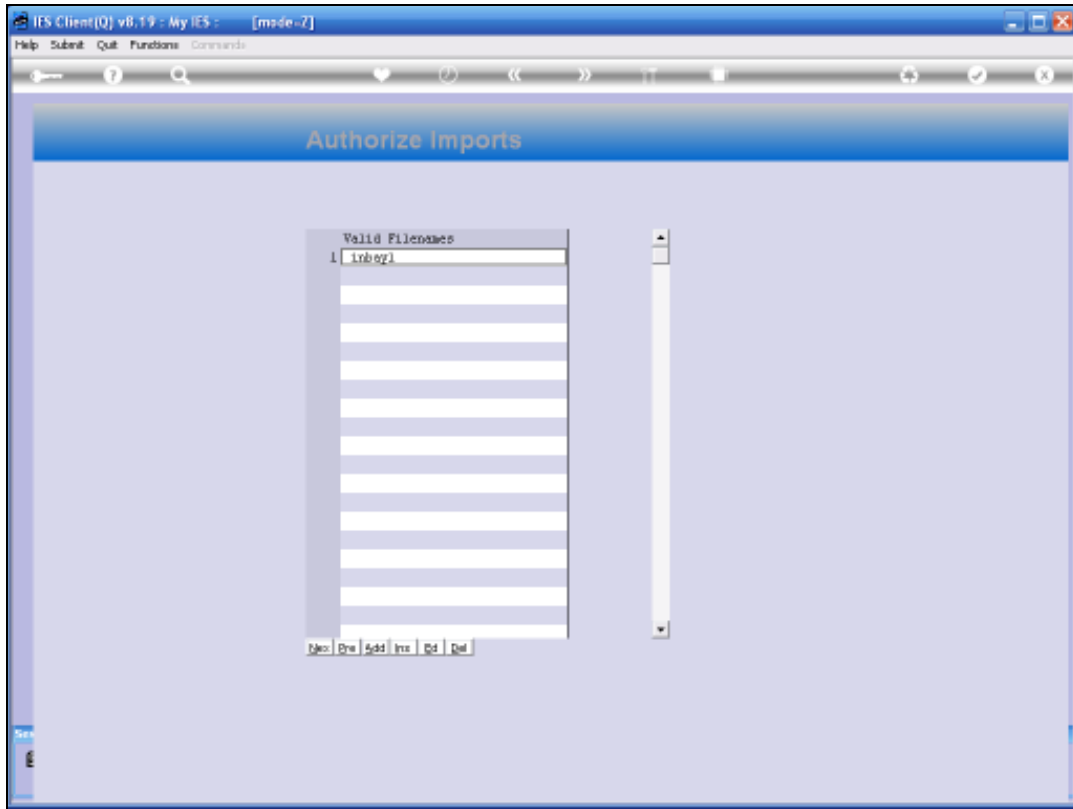
Slide 7

Slide notes:

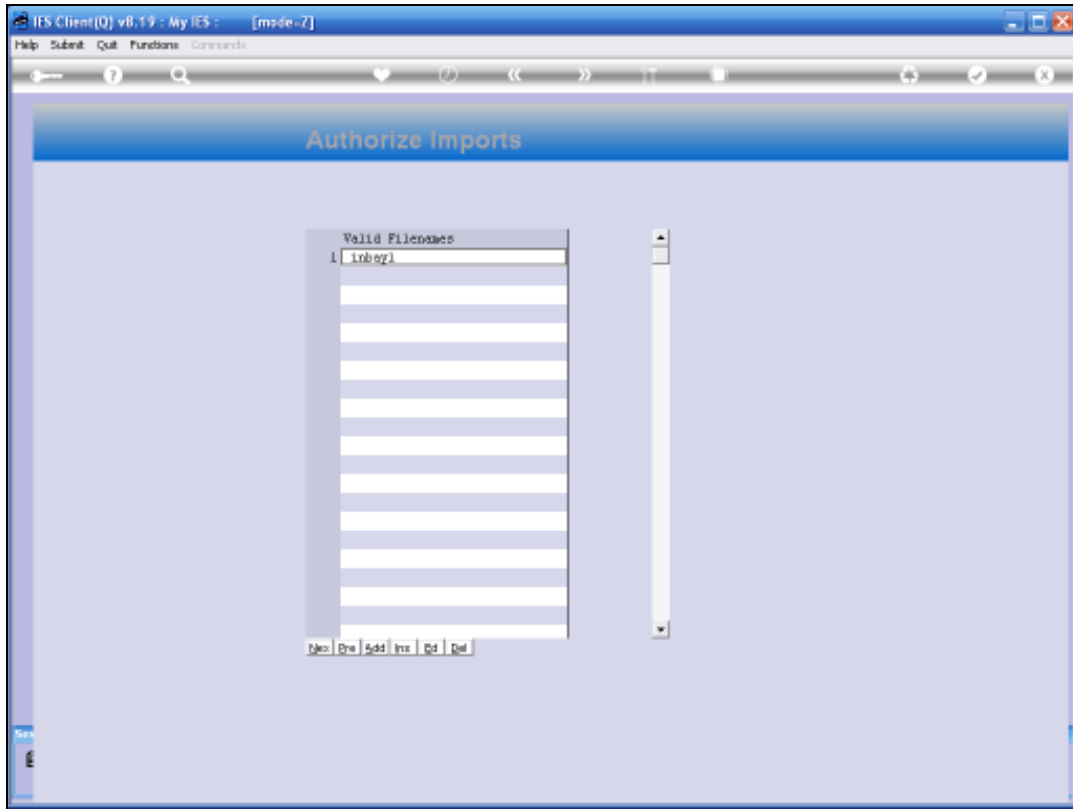


Slide 8

Slide notes: This Help option explains more detail about the control for Data Imports.



Slide 9
Slide notes:



Slide 10

Slide notes: