

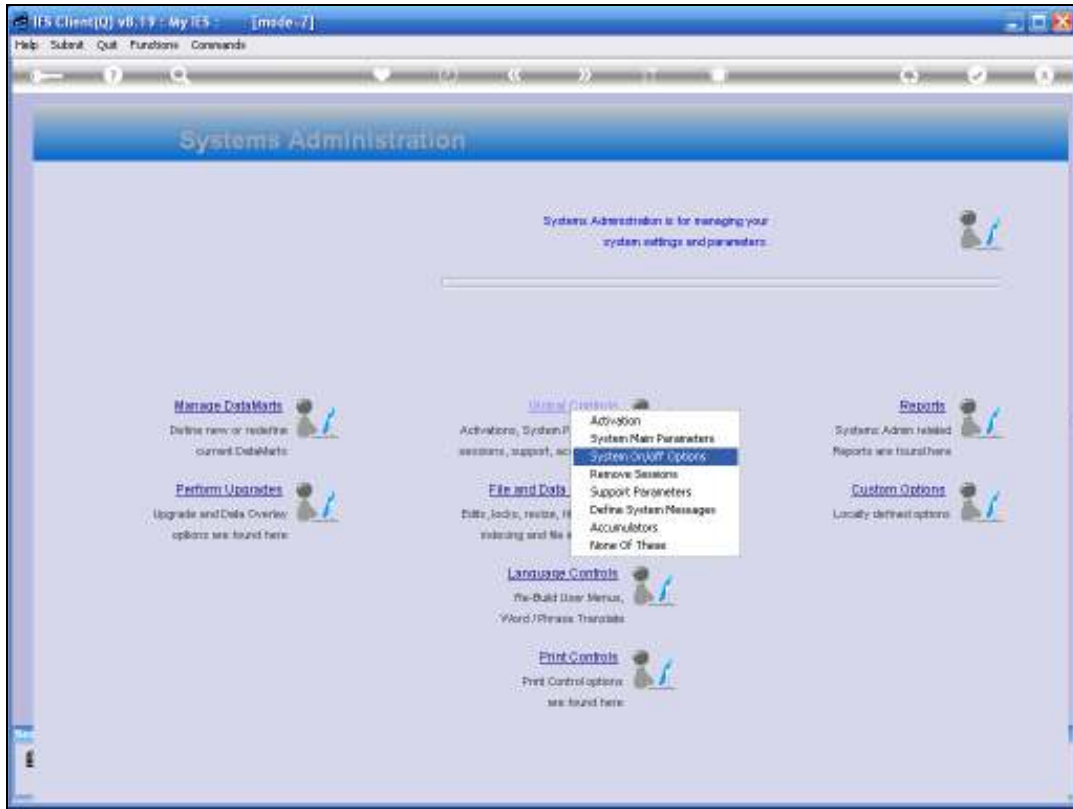
## Slide 1

Slide notes: In this tutorial we review the options to Disable the system or parts of it, and how we Enable it again.

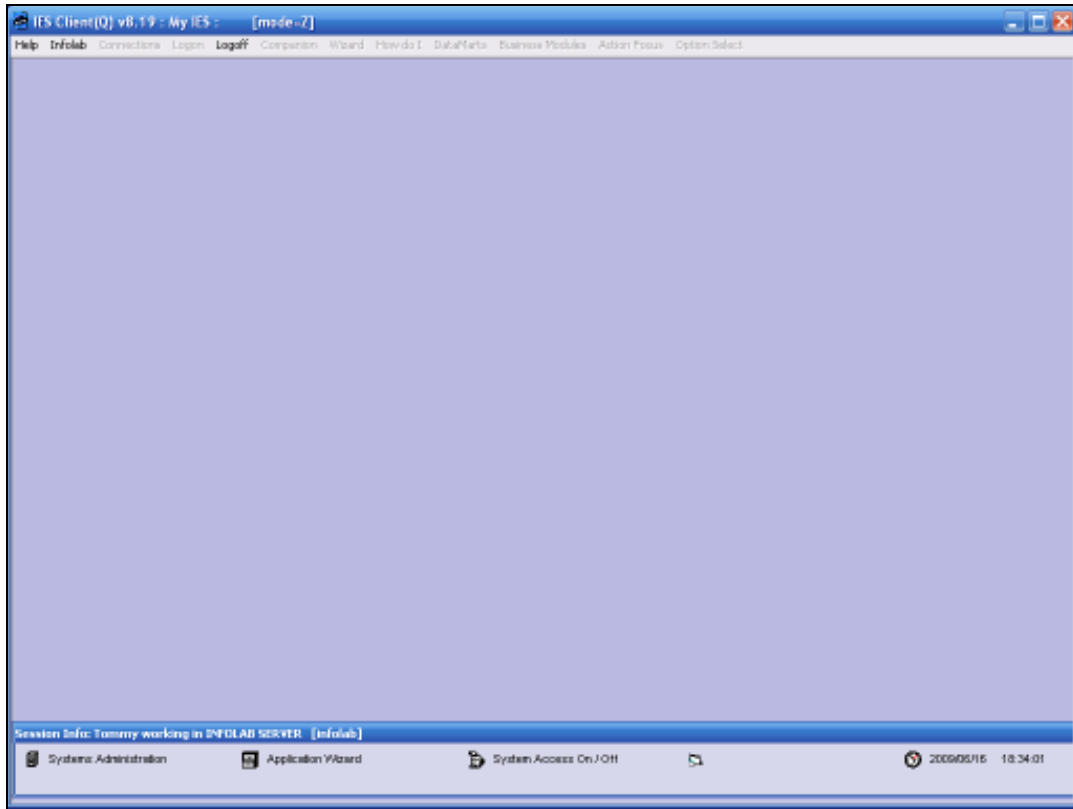


Slide 2

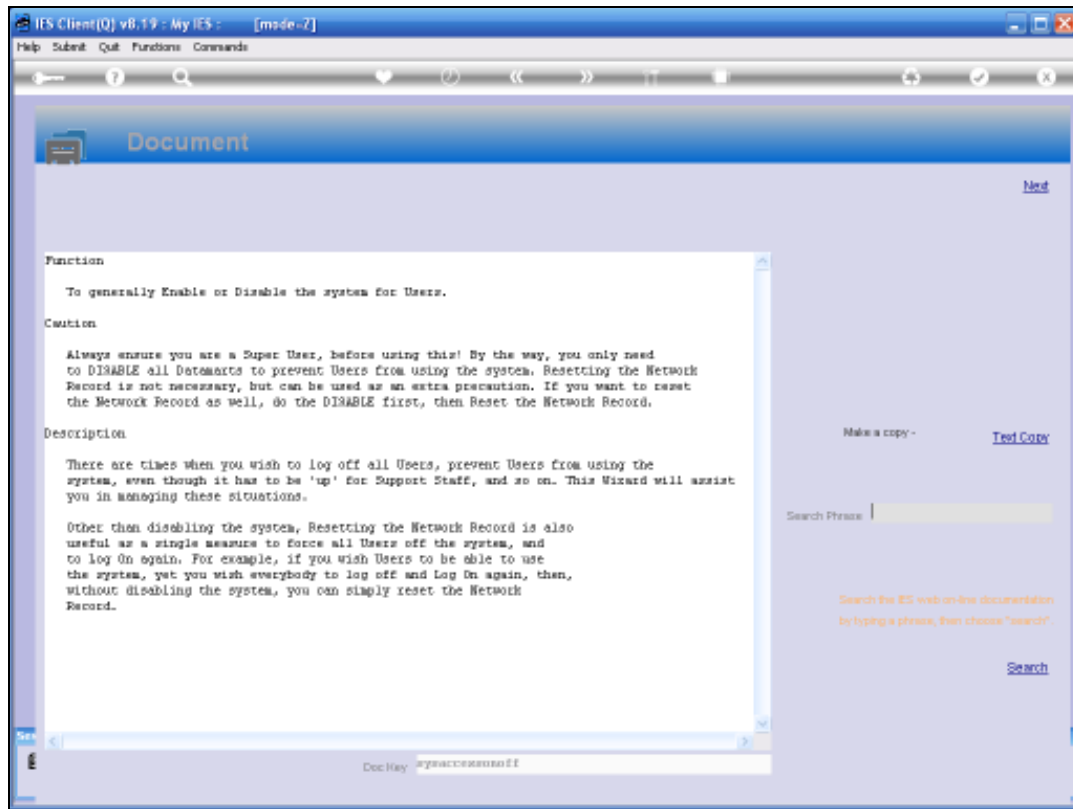
Slide notes: From Systems Administration, Global Controls, we choose 'System On / Off Options'.



Slide 3  
Slide notes:

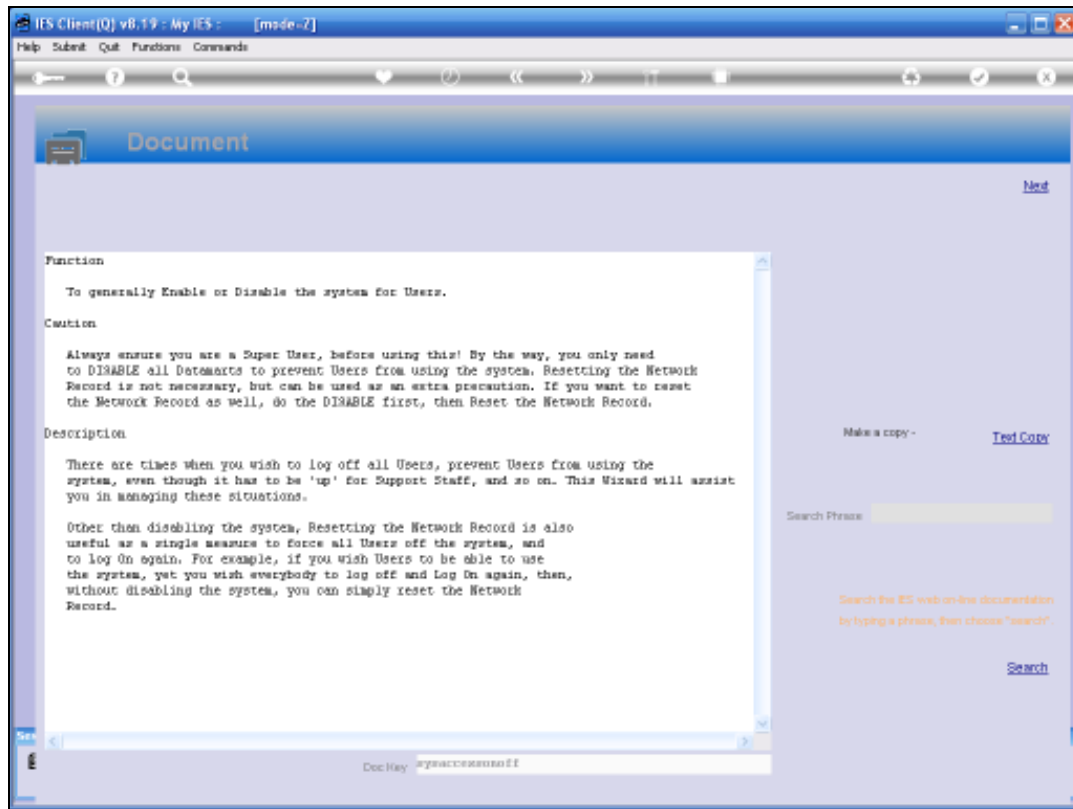


Slide 4  
Slide notes:

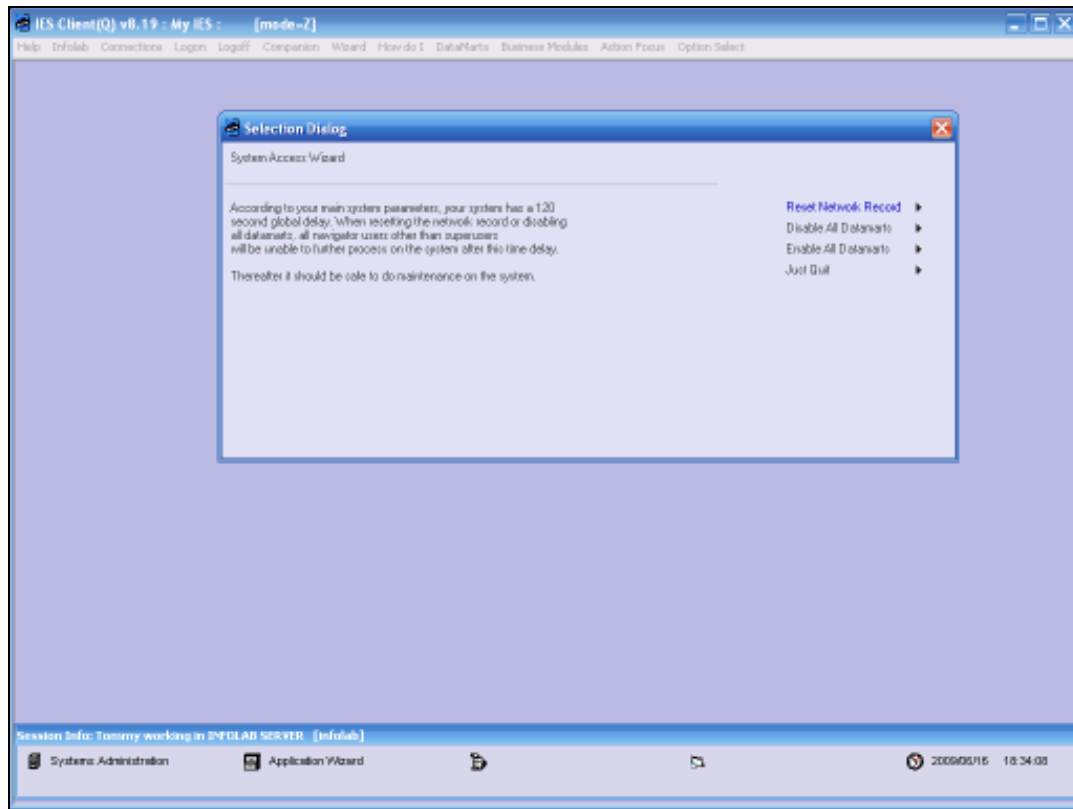


## Slide 5

Slide notes: The system will show a Help document that explains why and how we may want to Disable the system or parts of it.

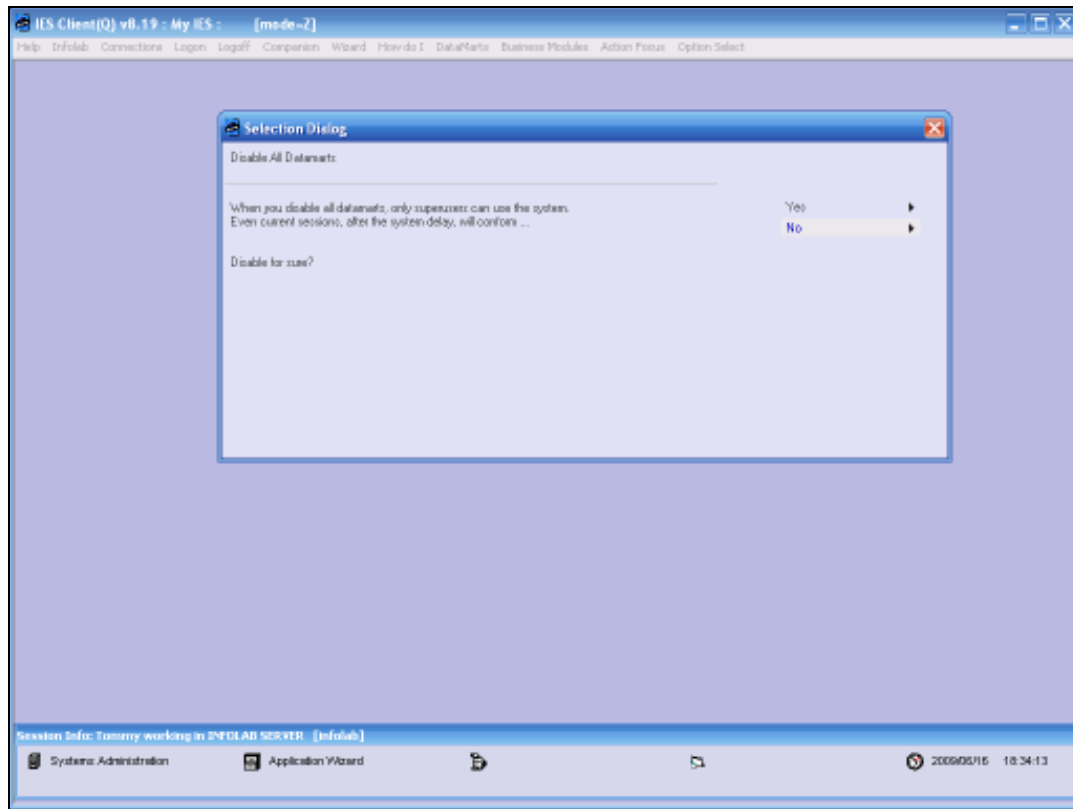


Slide 6  
Slide notes:



## Slide 7

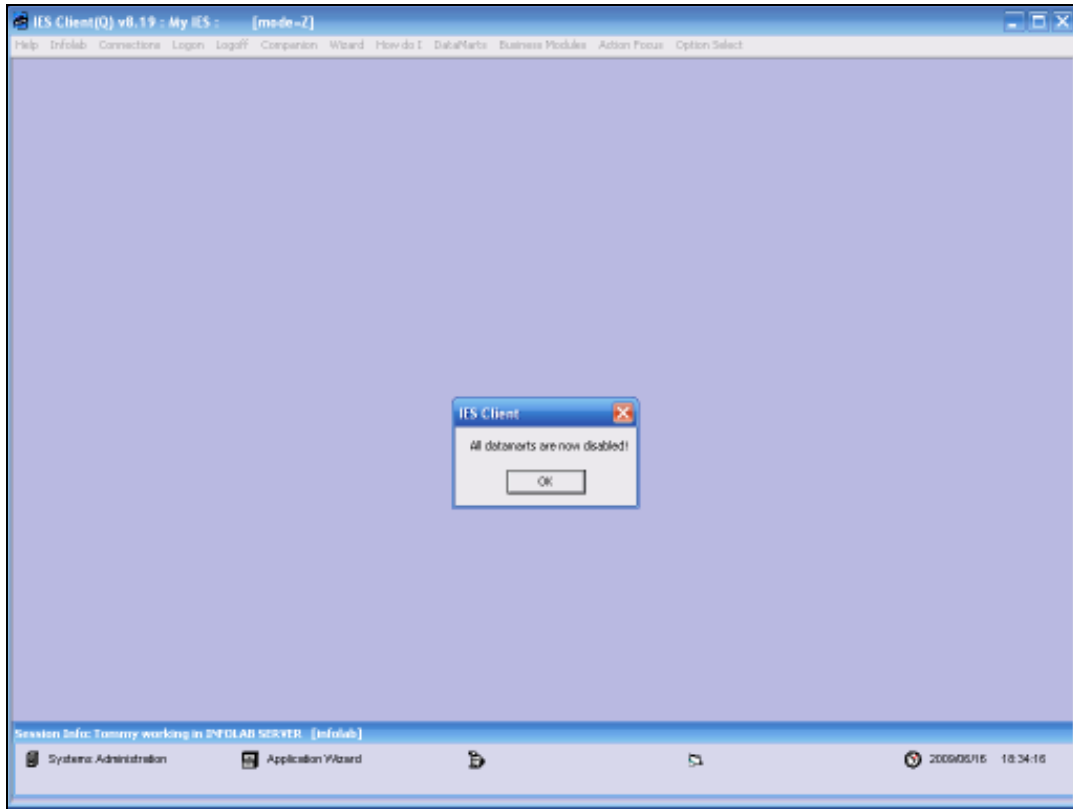
Slide notes: Next we have the available options. We can reset the Network Record, which will result in all current User Sessions becoming invalid, and Users will have to log on again. Or we can choose to Disable all Datamarts, for reasons of System Maintenance, or other.



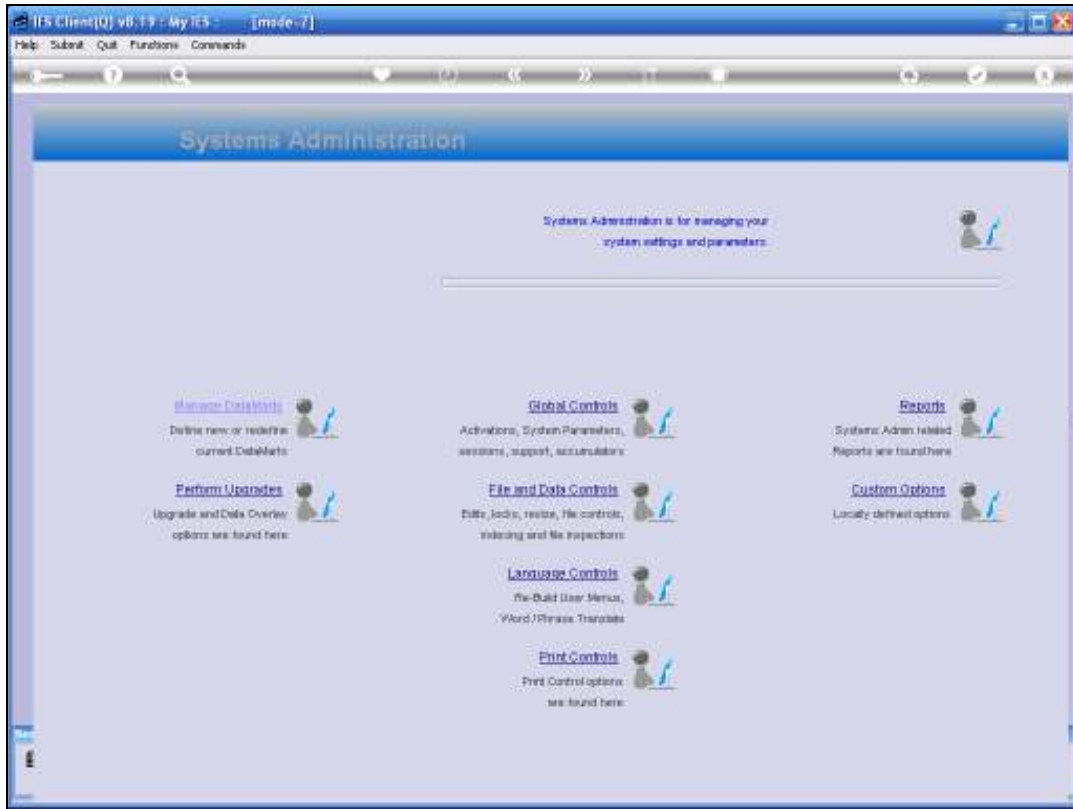
## Slide 8

Slide notes: In this case, we choose to Disable all Datamarts. If we want to Disable only a single Datamart, we can do that from the 'Maintain Datamart' option. Once all Datamarts are Disabled, only Users who are registered as Super Users will be allowed through.



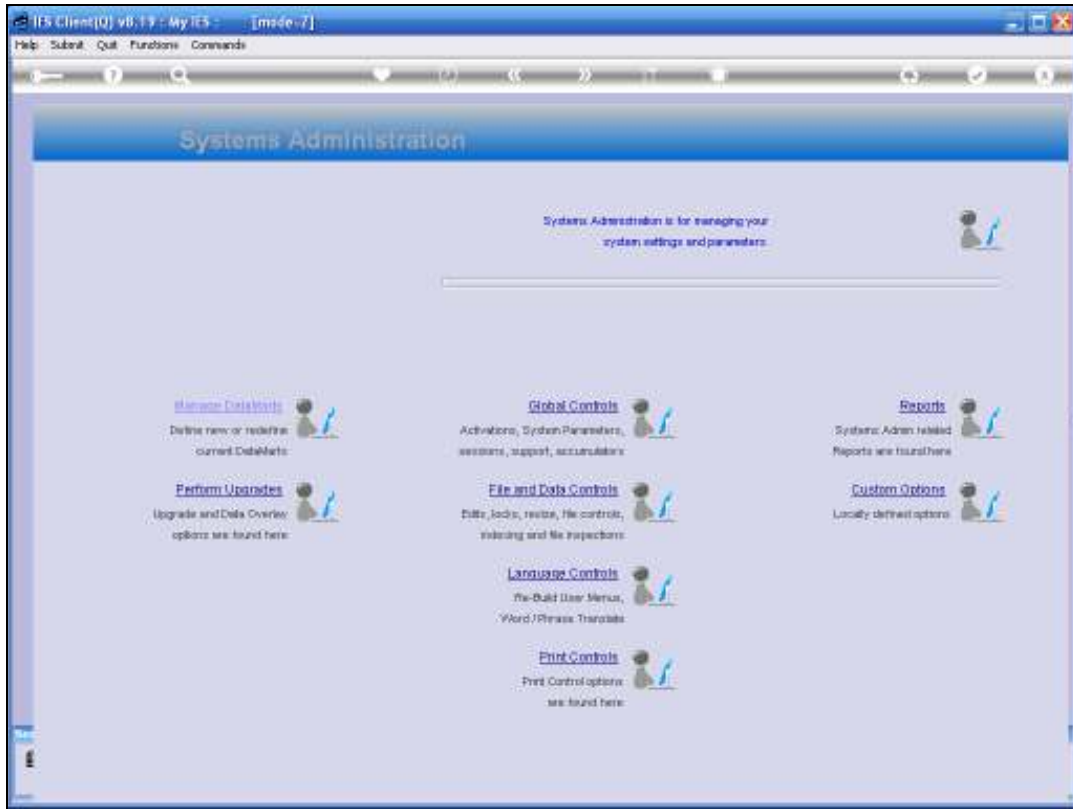


Slide 9  
Slide notes:

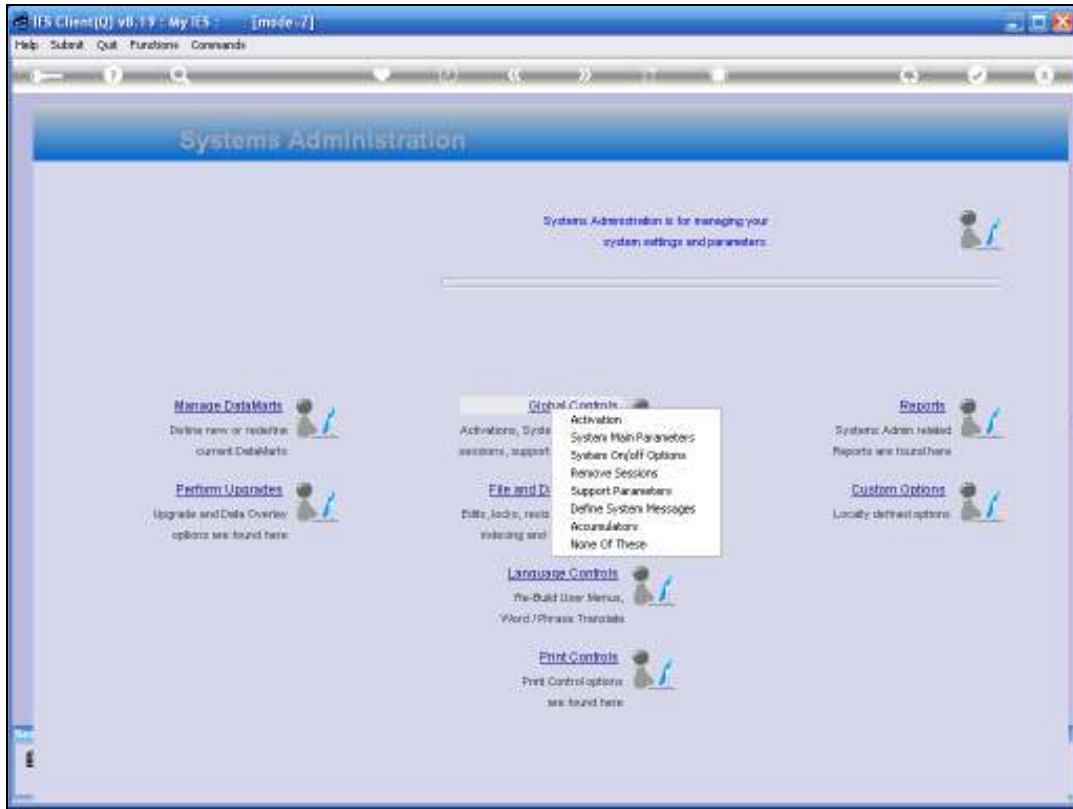


Slide 10

Slide notes:

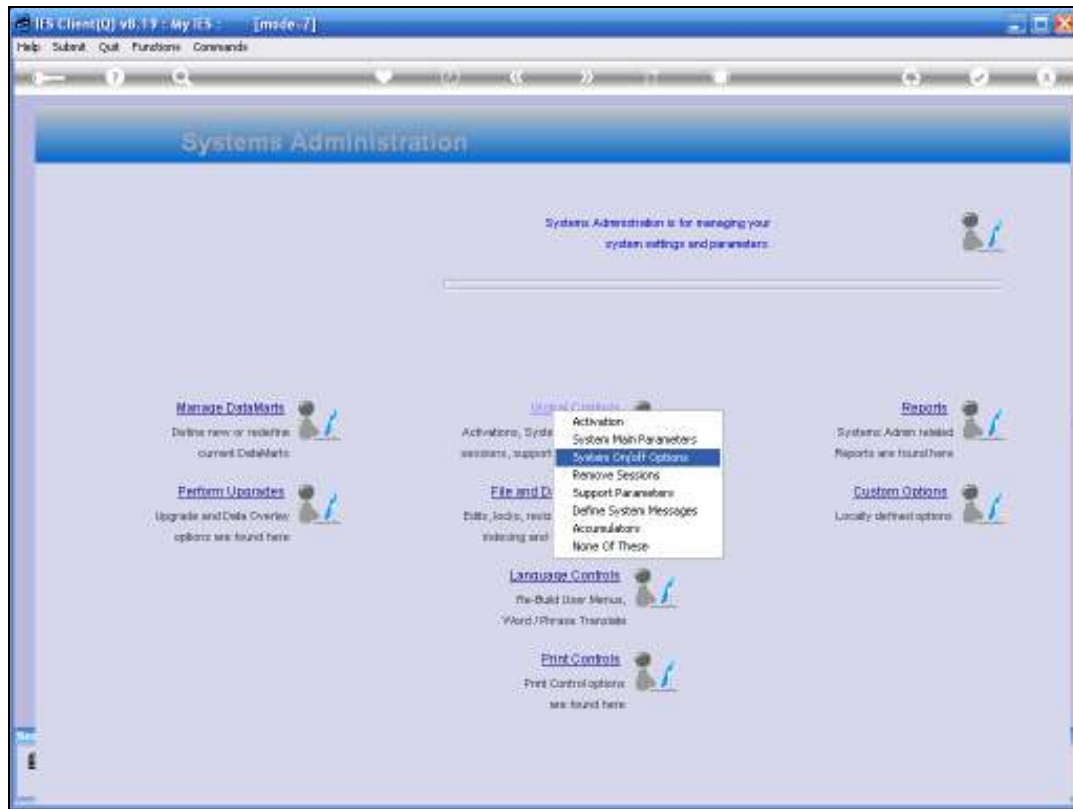


Slide 11  
 Slide notes:



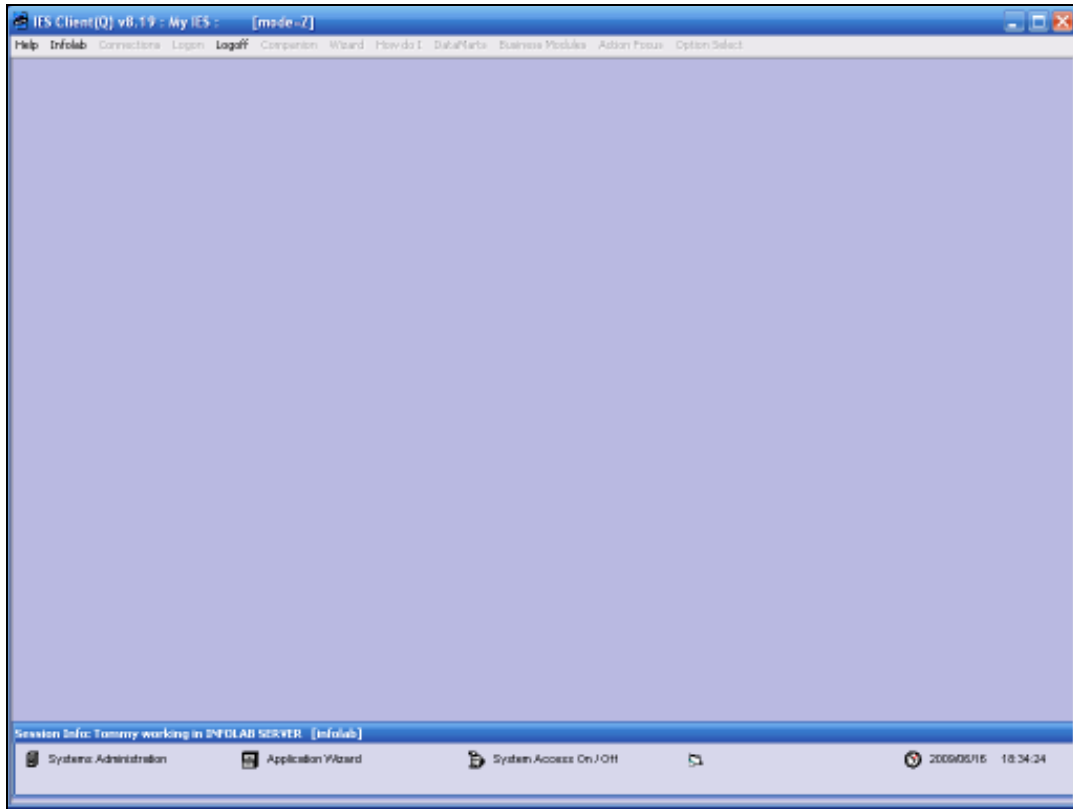
Slide 12

Slide notes:



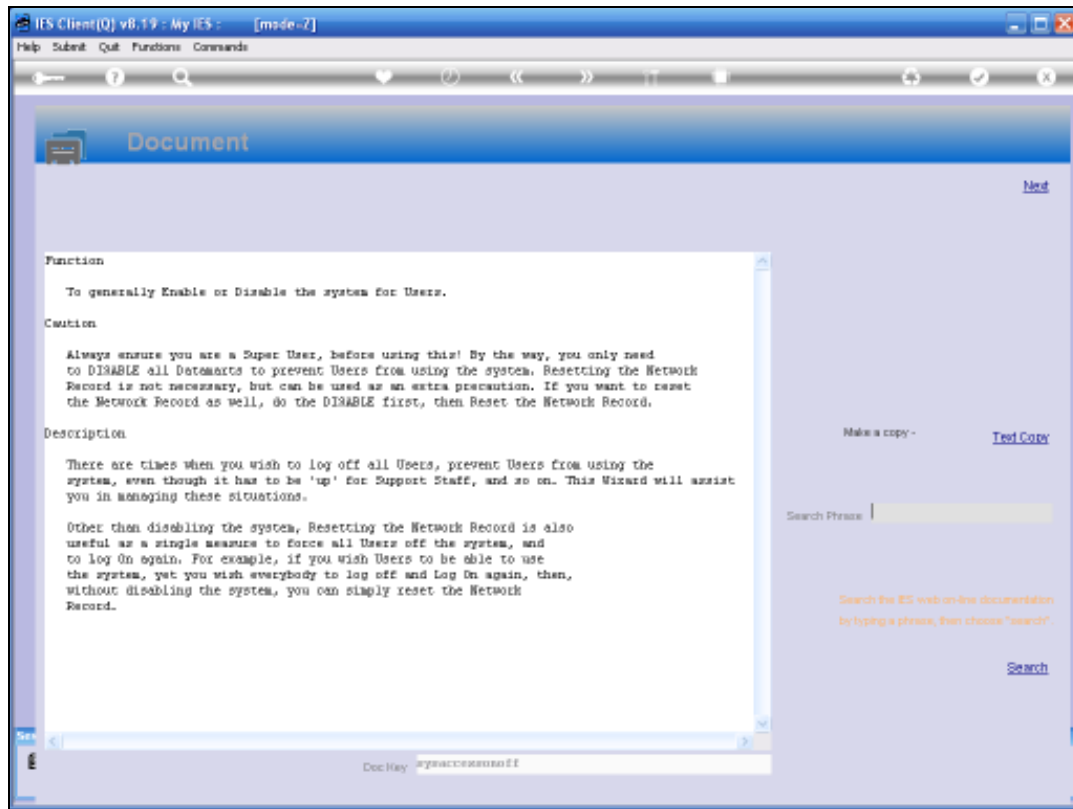
Slide 13

Slide notes: Next, we are going to Enable all the Datamarts again. This we will usually do when we want the system to be available again to all Users.



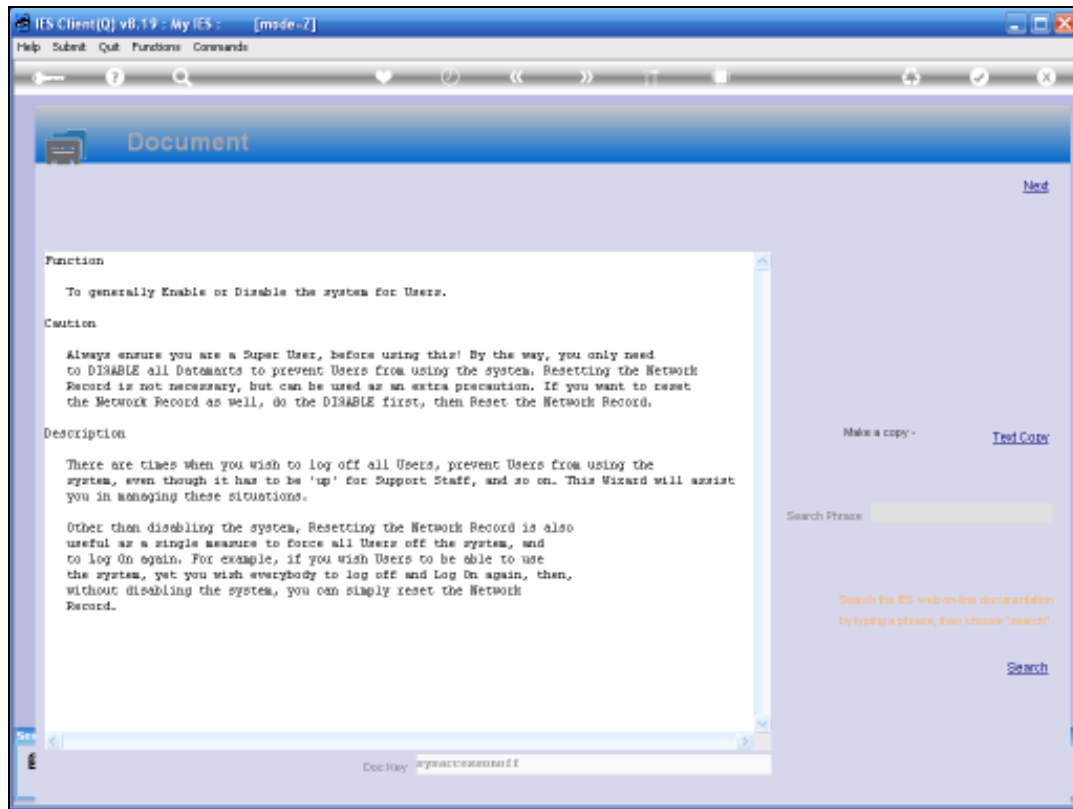
Slide 14

Slide notes:



Slide 15

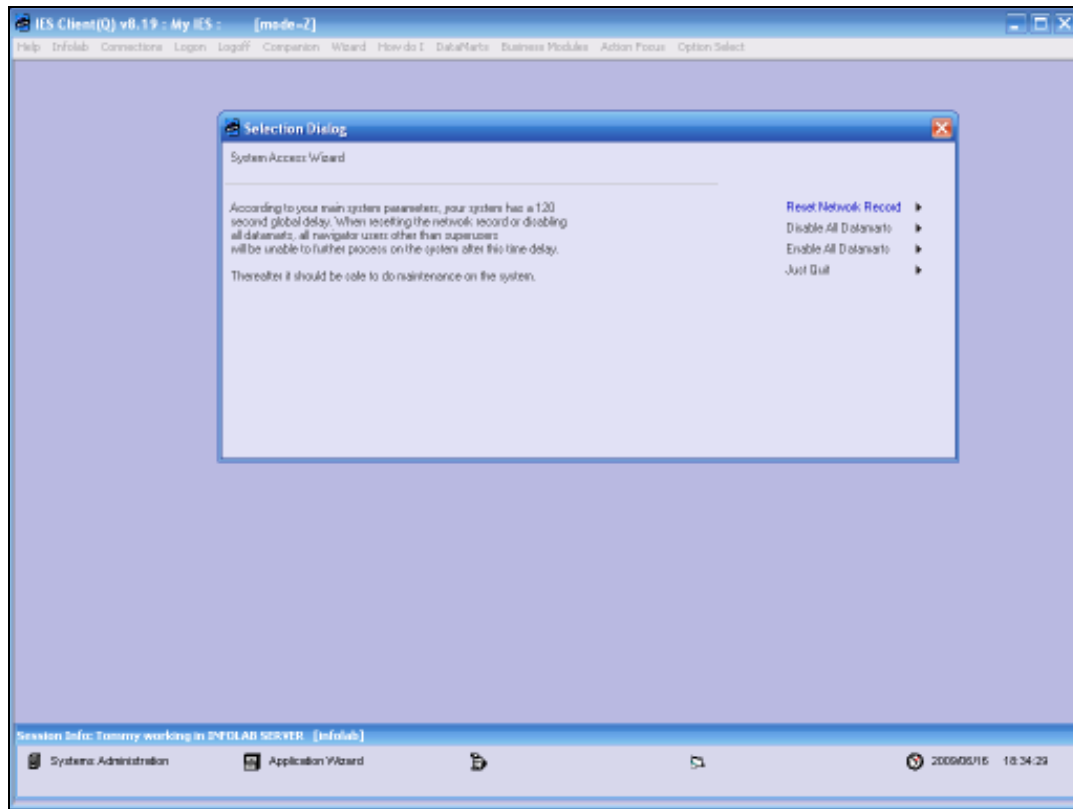
Slide notes:



Slide 16

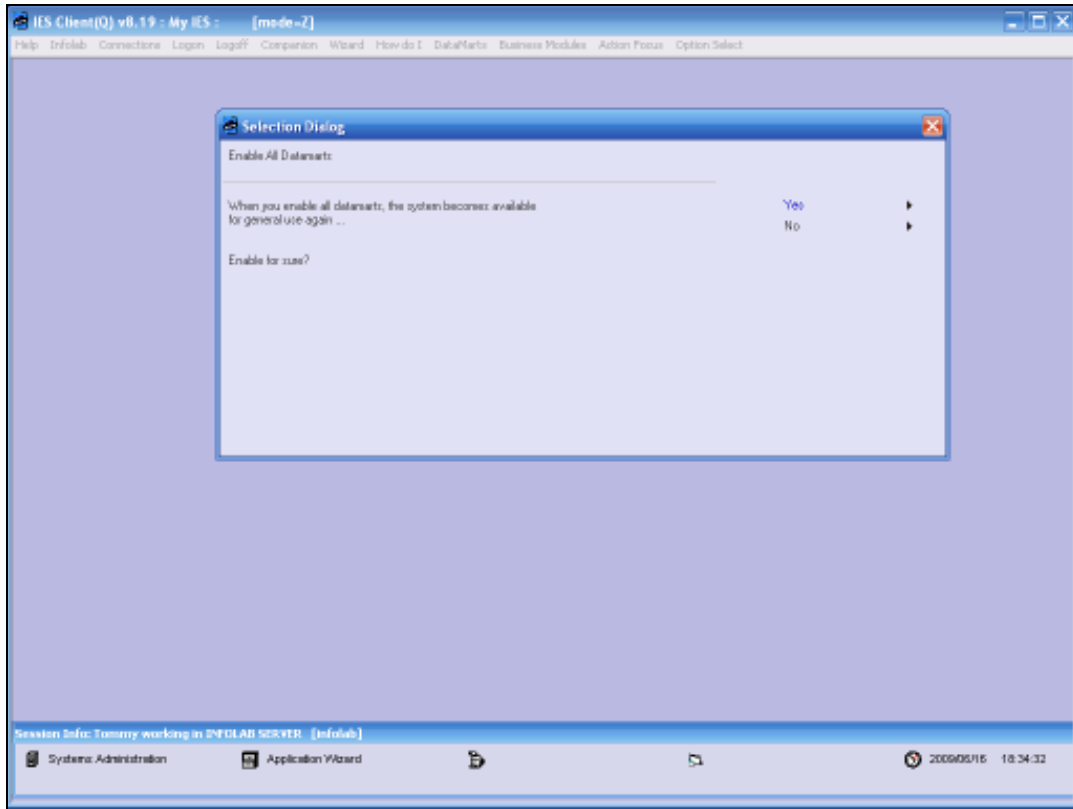
Slide notes:





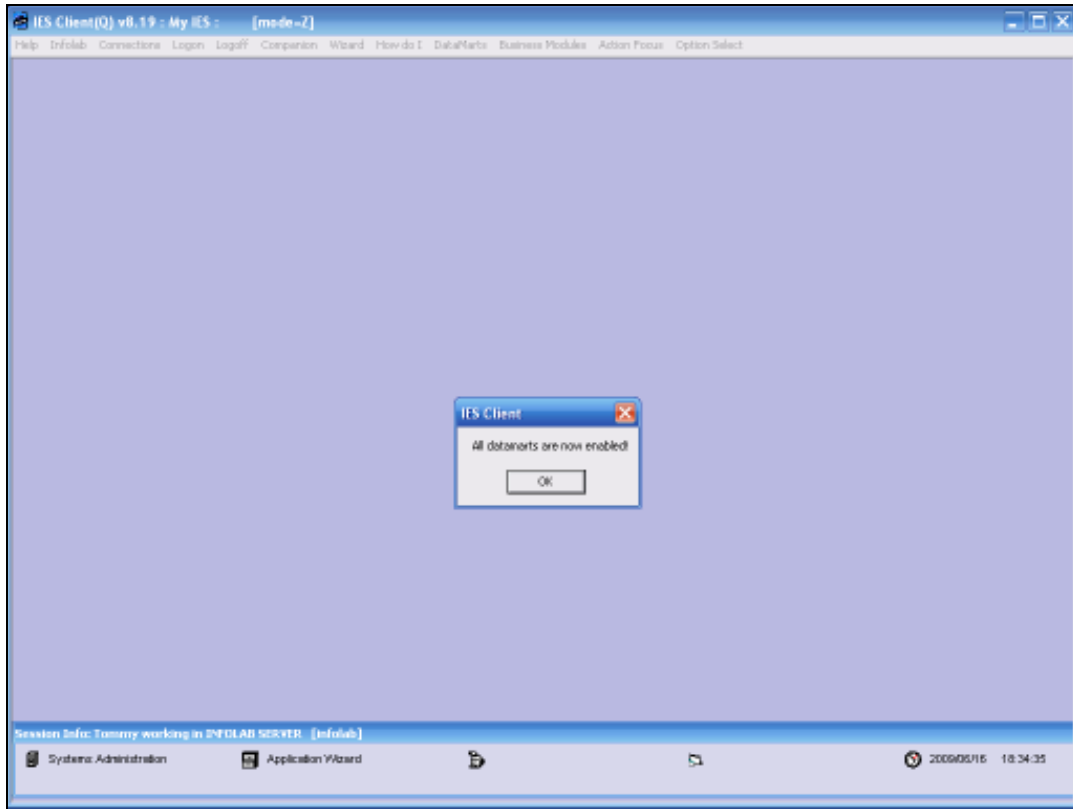
Slide 17

Slide notes:



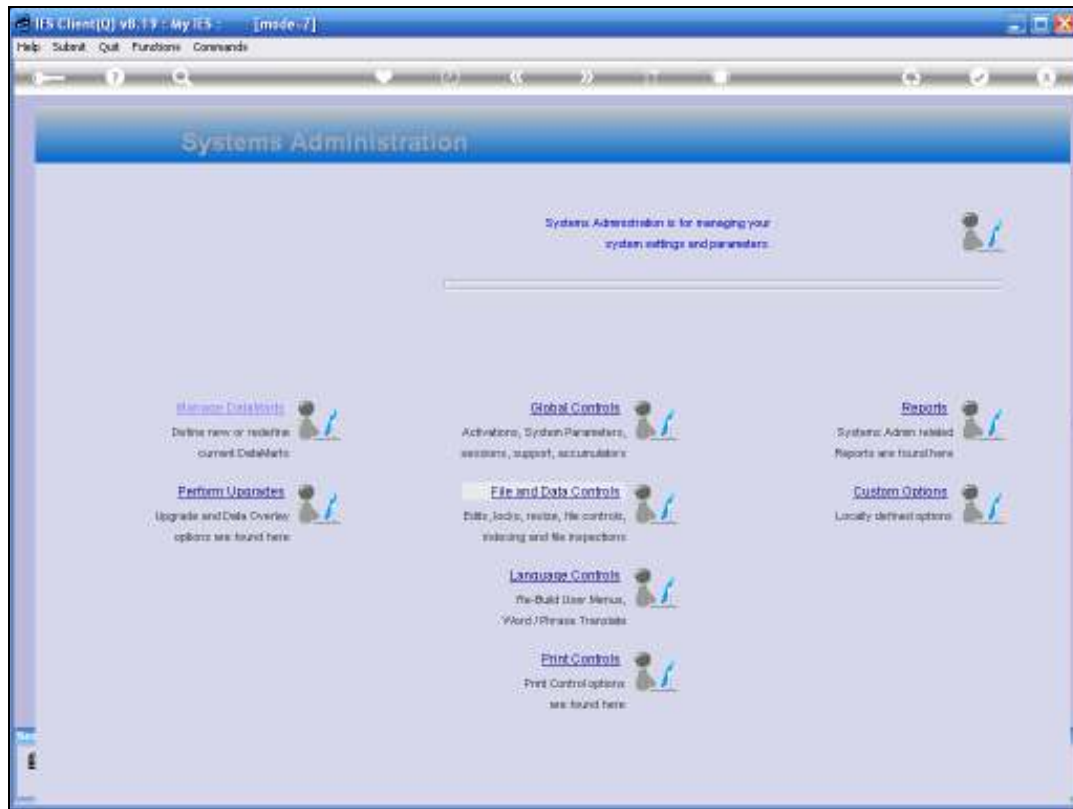
Slide 18

Slide notes:



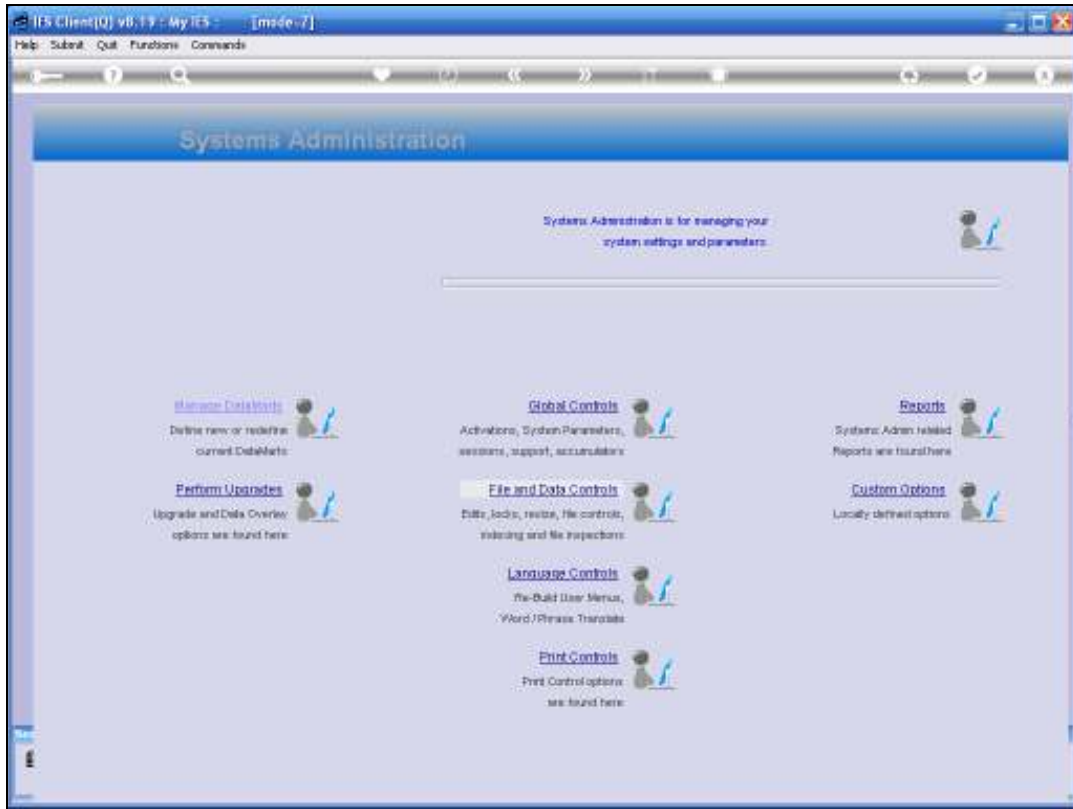
Slide 19

Slide notes: Now all the Datamarts are once again available for use.



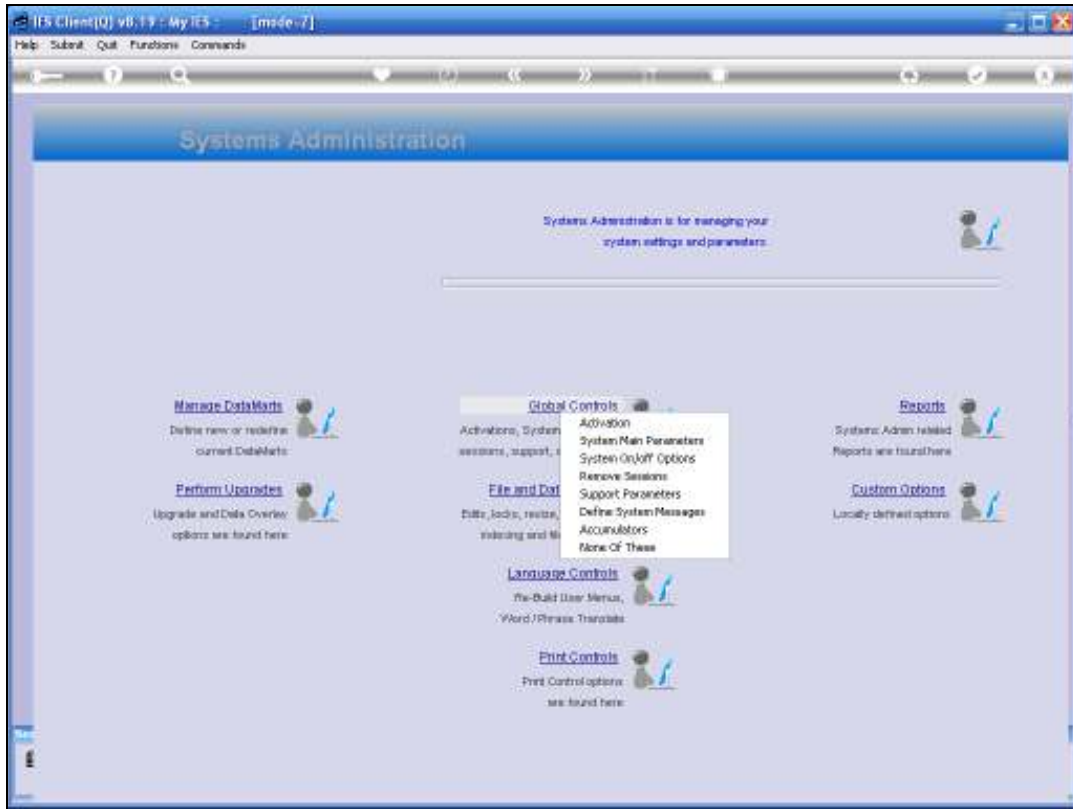
Slide 20

Slide notes: And next, we will look at Resetting of the Network Record.



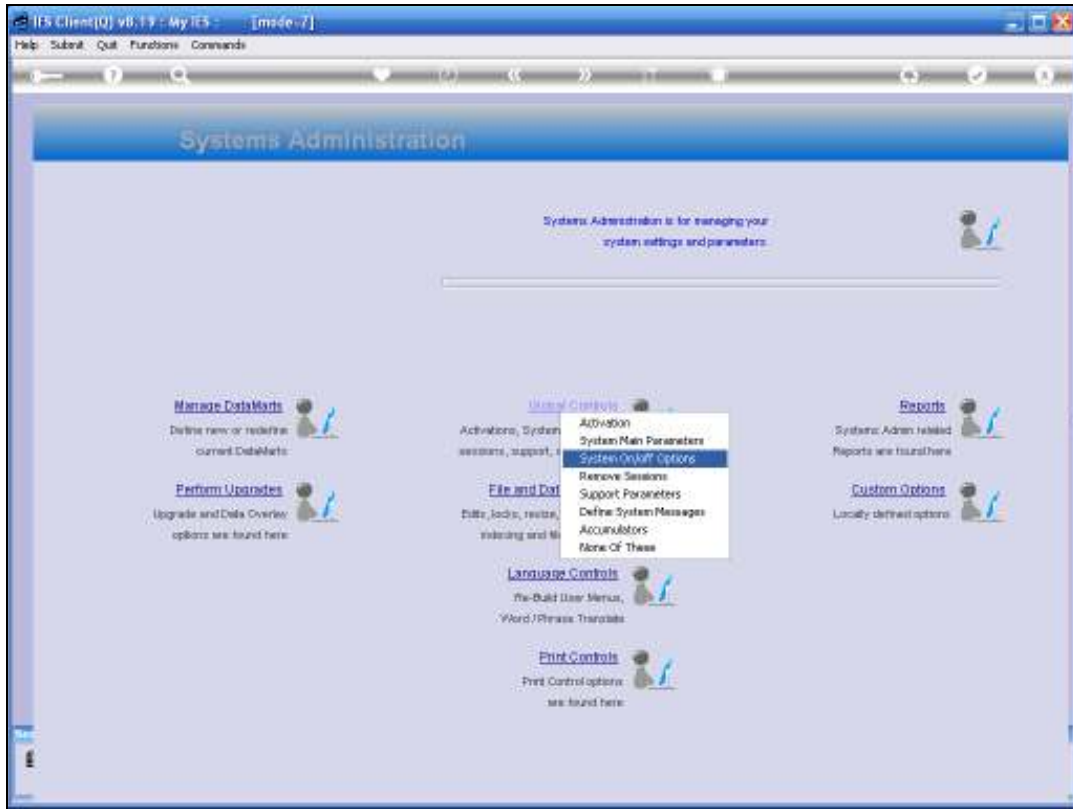
Slide 21

Slide notes:



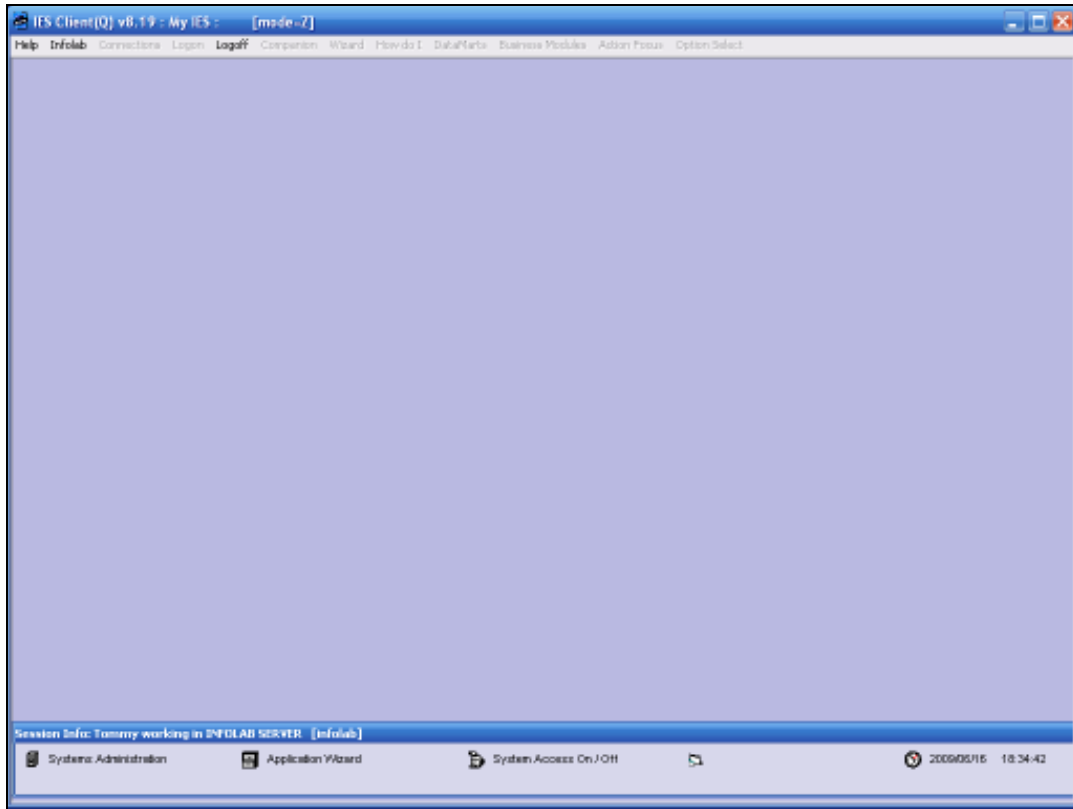
Slide 22

Slide notes:



Slide 23

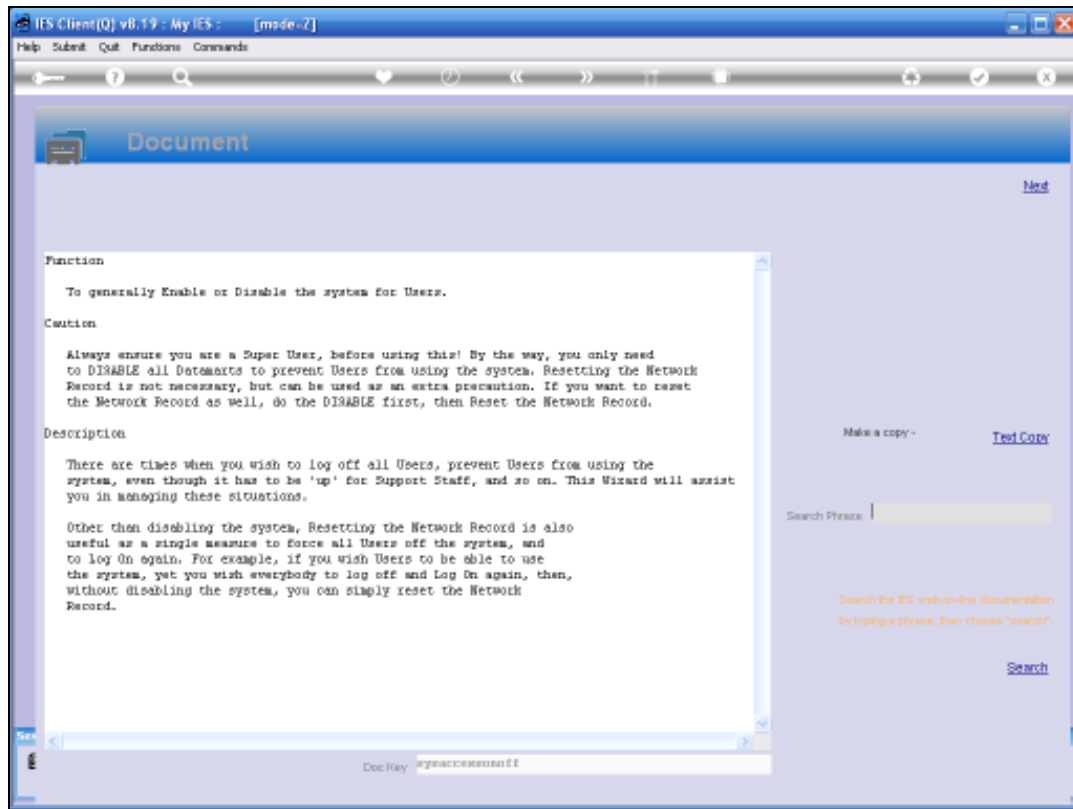
Slide notes:



Slide 24

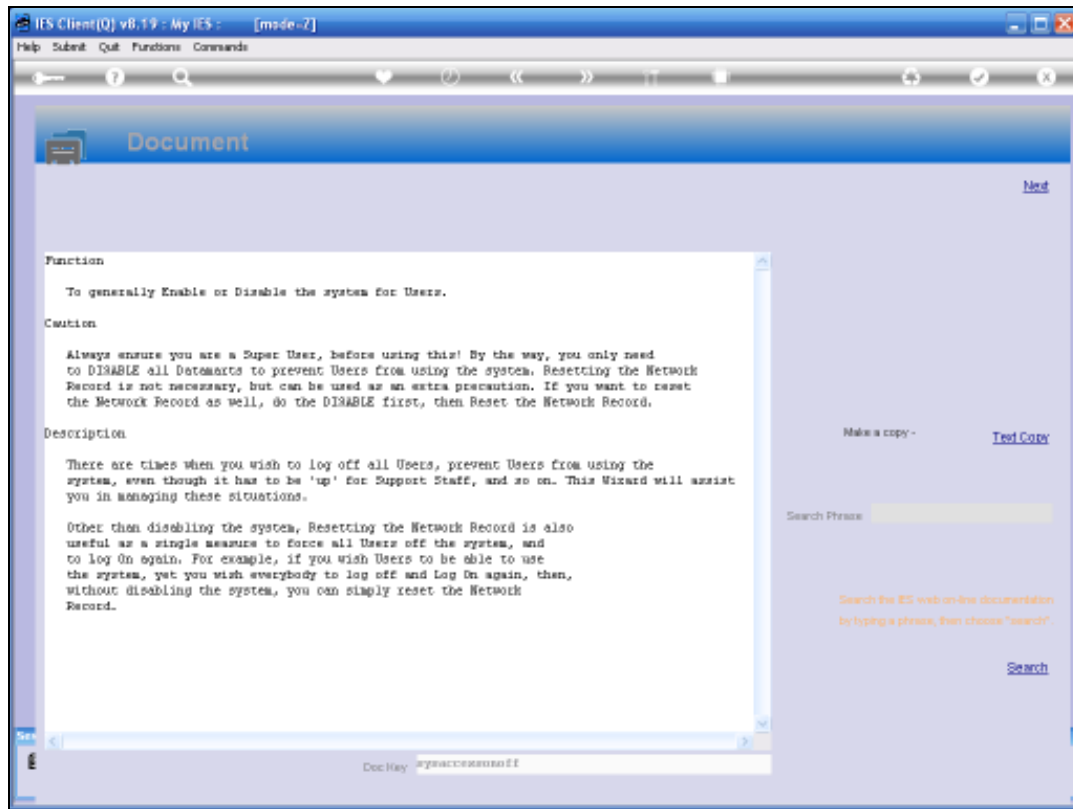
Slide notes:





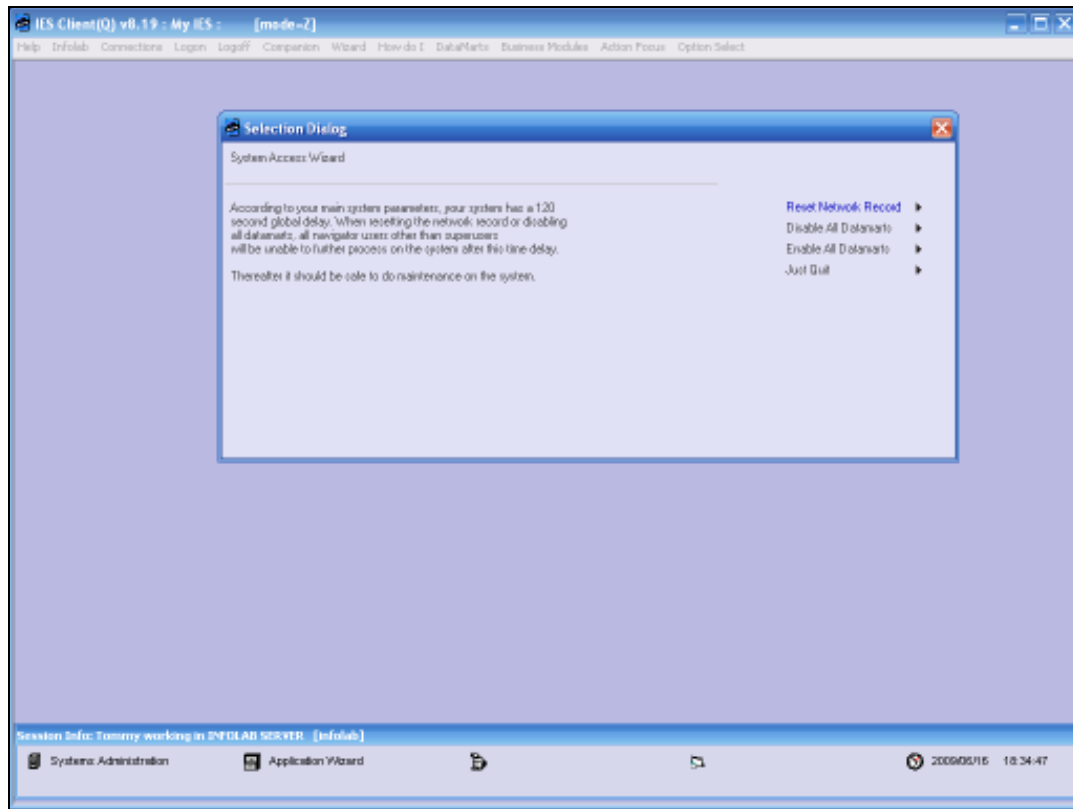
Slide 25

Slide notes:



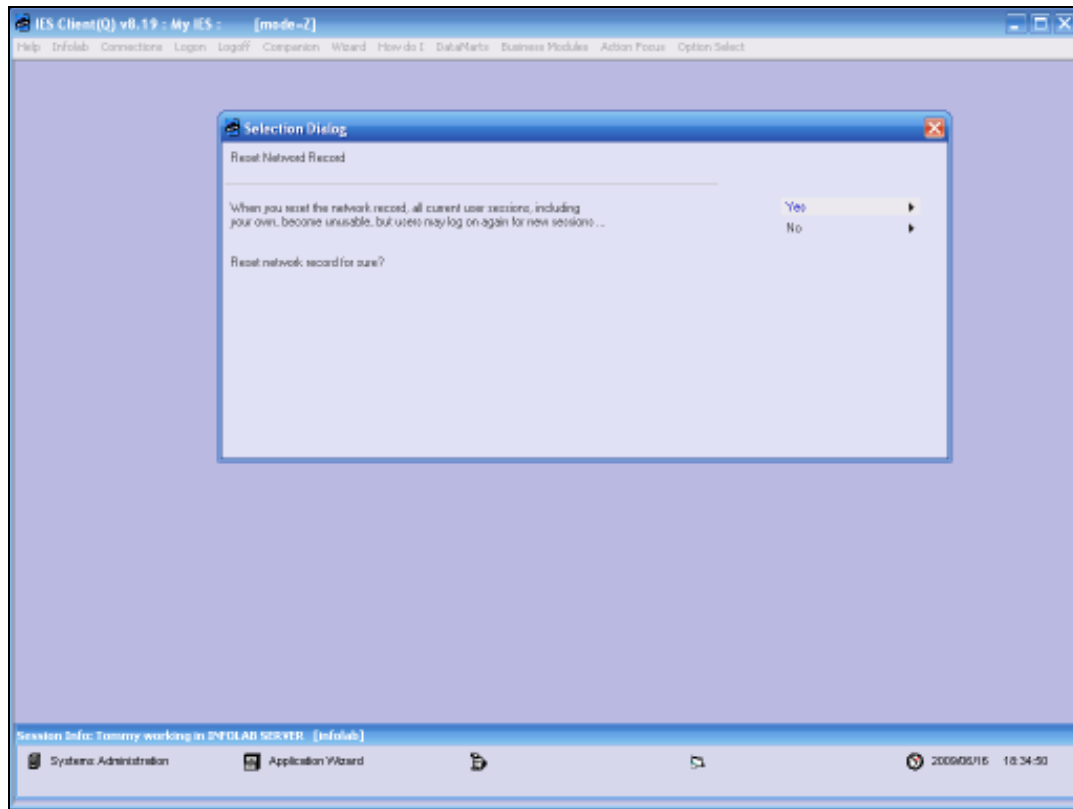
Slide 26

Slide notes:



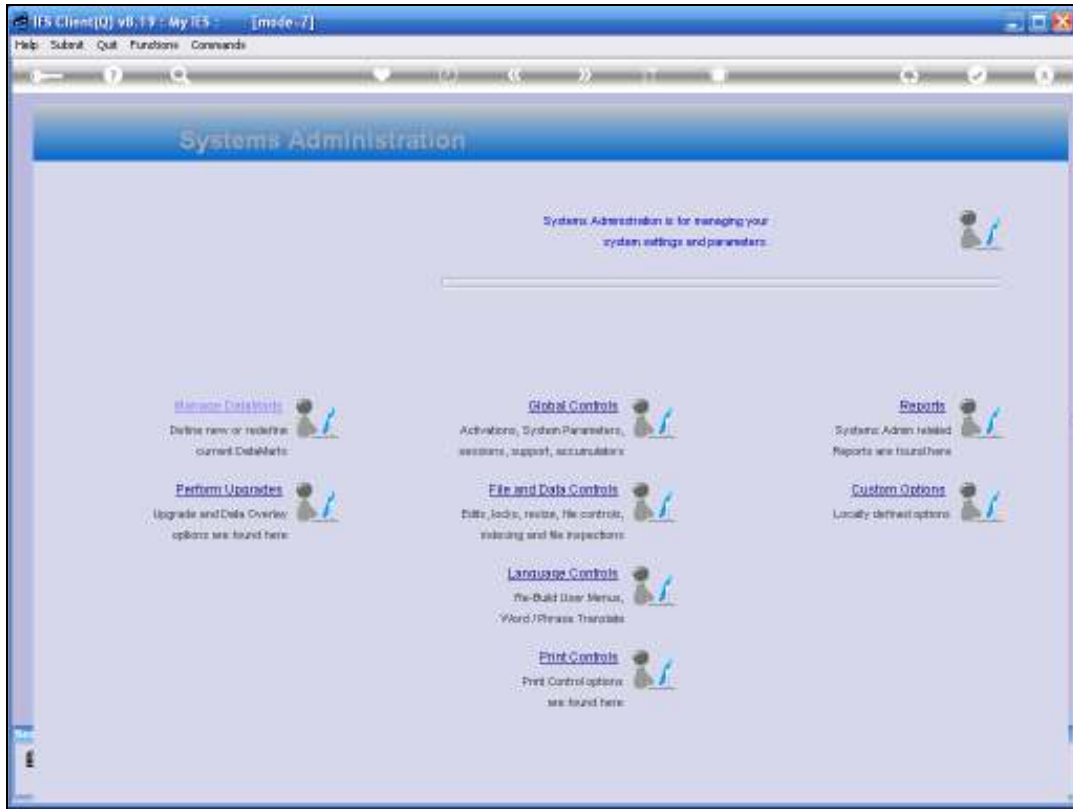
Slide 27

Slide notes:



## Slide 28

Slide notes: When we reset the network record, the system is still available to everybody, but all current sessions become invalid, meaning that Users will be logged off and will have to log on again.



Slide 29

Slide notes:



Slide 30

Slide notes: These are the primary options for controlling system availability to the Users.