



## Slide 1

Slide notes: In this tutorial we explain how to maintain your IES Activation. The option is reached by choosing "Global Controls" from the Systems Administration menu, and then choose "Activation".



Slide 2  
Slide notes:

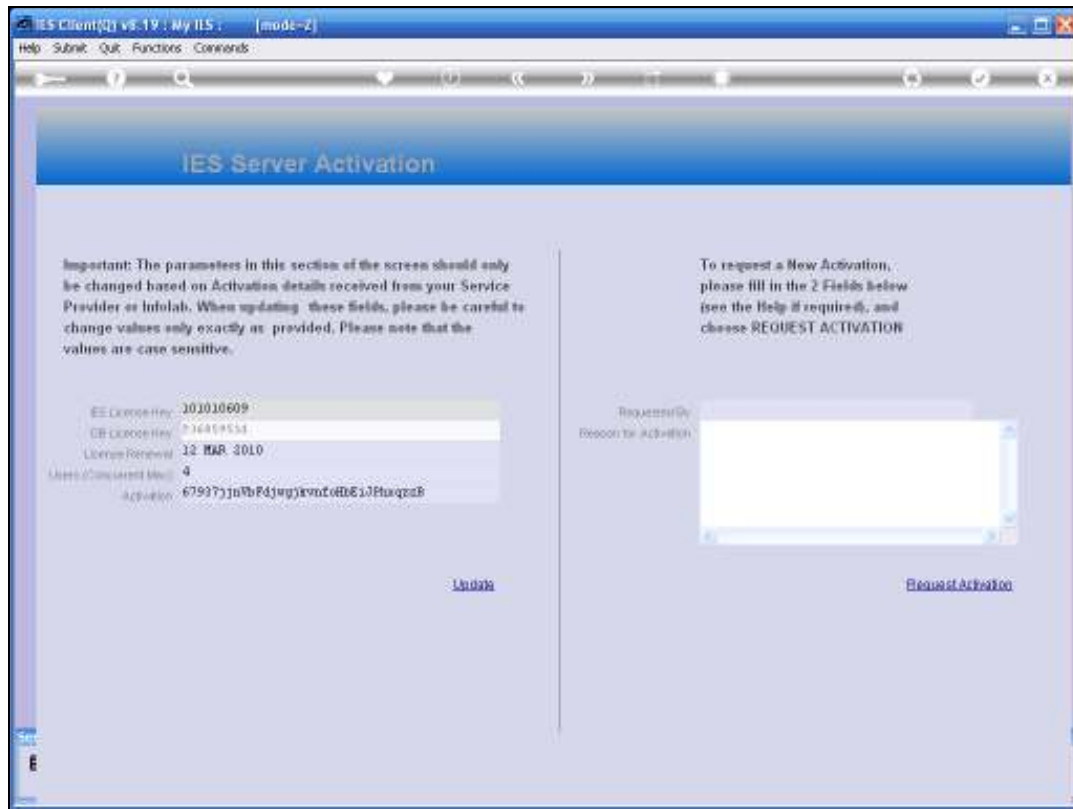


Slide 3  
Slide notes:



#### Slide 4

Slide notes: The Activation is necessary for you to be able to access the Business parts of your IES. If there is no valid Activation in place, you can freely work in the INFOLAB Datamart, which is the system kernel, but you cannot do much else, because you cannot reach an IES Business Datamart.



Slide 5

Slide notes: The Activation detail includes an IES License Key, and also a Renewal Date.



## Slide 6

Slide notes: It then states the maximum number of Users that can work on the system at a moment in time. In fact, there can be many more Users than the number stated here, but the maximum allowed to be logged on at a moment in time is this number.



## Slide 7

Slide notes: And then there is the Activation Key itself. This Key is constructed in a fashion that we cannot easily decrypt, and includes the facts of the other fields already discussed. That means that if any of the other fields are not stated correctly, then the Activation Key will not verify and that means the Activation will be rendered invalid. It is important to update the fields exactly, and as case sensitive fields, as provided on the Activation License received from your Service Provider or Infolab.



The screenshot shows a web page from InfoLab (www.infoles.com) titled 'IES Server Activation detail: -'. It provides instructions on how to update server activation through the Systems Administration, Global Controls, Activation menu. It lists a Database License Key (236859514) that is automatic and cannot be updated. It also lists several fields that can be updated with copy/paste from the license: IES License Key (101010609), Renewal Date (12 MAR 2010), Users (max) (4), and Activation Key (67937JjnVbFdjwgJkvnfoHbEDPhxqz2B).

InfoLab [www.infoles.com](http://www.infoles.com)

IES Server Activation detail: -  
To update your server activation, go Systems Administration, Global Controls, Activation.

The following Field is automatic and cannot be updated, but must be the same: -  
DataBase License Key 236859514

The following fields, where different, may be updated with copy / paste from the values shown here. Note that the values are case sensitive!

IES License Key 101010609  
Renewal Date 12 MAR 2010  
Users (max) 4  
Activation Key 67937JjnVbFdjwgJkvnfoHbEDPhxqz2B

## Slide 8

Slide notes: The Activation License looks like this. The Database Key is already in your system, and even though it is displayed on the Activation screen, it cannot be changed. However, it must be the same as shown on your License. The other fields, shown here in red, are the fields that you may update, and you may use the 'copy and paste' method to paste these values into the fields of the Activation screen before choosing SAVE.





## Slide 9

Slide notes: If you do not yet have your Activation License, or need a new Activation License for whatever reason, then you may use the 'Request Activation' function to request a new Activation License from Infolab.

IES Client(0) vs.19 : My IES : [mode-Z]

Help Submit Quit Functions Comments

### IES Server Activation

Important: The parameters in this section of the screen should only be changed based on Activation details received from your Service Provider at Infolah. When updating these fields, please be careful to change values only exactly as provided. Please note that the values are case sensitive.

EE License Key: 201010609  
DB License Key: 214419554  
License Renewal: 12 MAR 2010  
Users/Concurrent Mux: 4  
AppKey: 679977j6VbPdJwgYrmt6bE1JPhuqzB

[Update](#)

To request a New Activation, please fill in the 2 Fields below (see the Help if required), and choose REQUEST ACTIVATION

Requested By: Tommy  
Reason for Activation:

[Request Activation](#)

Slide 10

Slide notes: When you click on 'Requested By', the system will fill in your name.



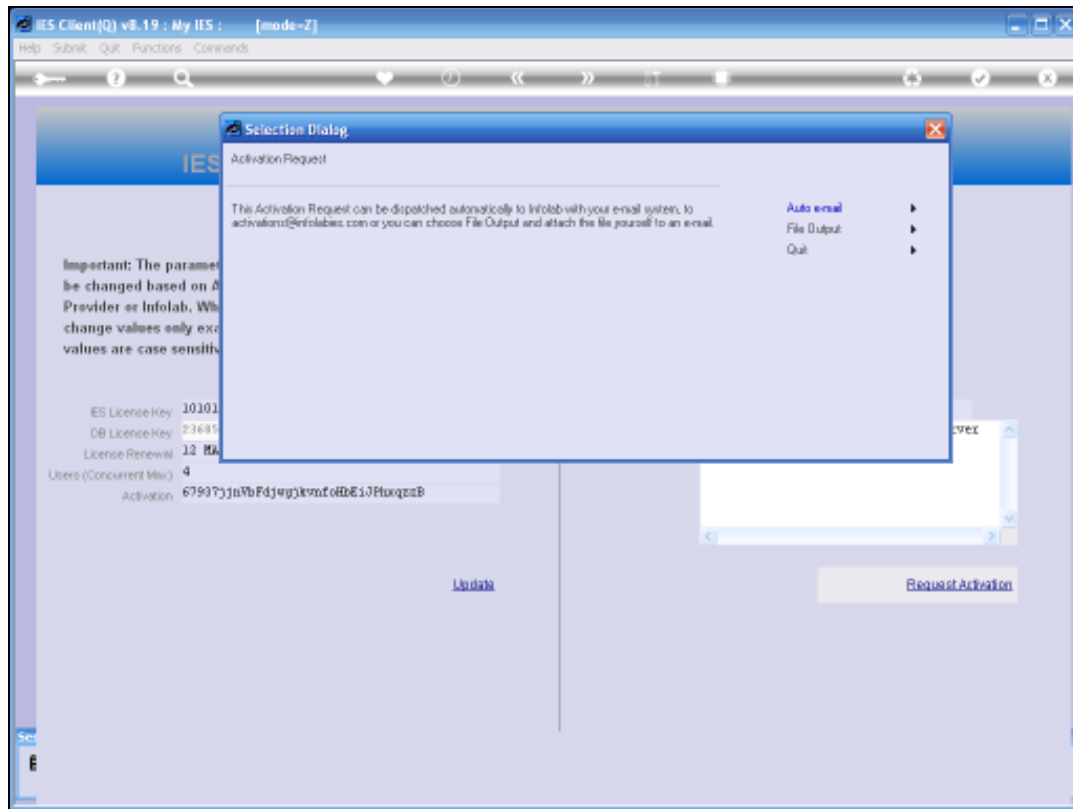
Slide 11

Slide notes: All that remains is to state the reason why you are requesting a new Activation License.



Slide 12

Slide notes: Then choose 'Request Activation'.



### Slide 13

Slide notes: If you are currently connected to the Internet, the system can automatically dispatch your request to Infolab. If you are not connected, you may choose 'File Output' for a File that you can copy or save and later attach to an e-mail that you will send off to [activations@infolab.com](mailto:activations@infolab.com). As soon as you receive your new Activation License, you can apply it as discussed in this tutorial.

IES Client(0) vs. 19 : My IES : [mode-Z]

Help Submit Quit Functions Comments

### IES Server Activation

Important: The parameters in this section of the screen should only be changed based on Activation details received from your Service Provider at Infolab. When updating these fields, please be careful to change values only exactly as provided. Please note that the values are case sensitive.

EE License Key: 101010609  
CE License Key: 214419554  
License Renewal: 12 MAR 2010  
Users/Concurrent Mux: 4  
Key: 679977j6VbPdJwgYrvt6thE1JPhuqz8

[Update](#)

To request a New Activation, please fill in the 2 Fields below (see the Help if required), and choose REQUEST ACTIVATION

Requester Name: Tony  
Reason for Activation: System Crash, Re-install on new Server

[Request Activation](#)

Slide 14

Slide notes:



**InfoLab** [www.infobases.com](http://www.infobases.com)

IES Server Activation detail: -  
To update your server activation, go Systems Administration, Global Controls, Activation.

The following Field is automatic and cannot be updated, but must be the same: -  
DataBase License Key **236859514**

The following fields, where different, may be updated with copy / paste from the values shown here. Note that the values are case sensitive!

IES License Key **101010609**  
Renewal Date **12 MAR 2010**  
Users (max) **4**  
Activation Key **67937JjnVbFdjwgJkvnfoHbEDPfxqzzB**

## Slide 15

Slide notes: Some more notes on the Activation License, and the contingency arrangements that are provided. For a brand new system that has just been installed and never activated, the system will automatically enter the so-called emergency mode, and will allow 30 days of full operation for a limited number of Users. Therefore, you may immediately start using the system while waiting for the Activation License. In a system formerly activated properly, but where the license has expired, the system will also enter emergency mode for 30 days, allowing full operation for all licensed Users, and allowing you time to request and obtain a new Activation License.