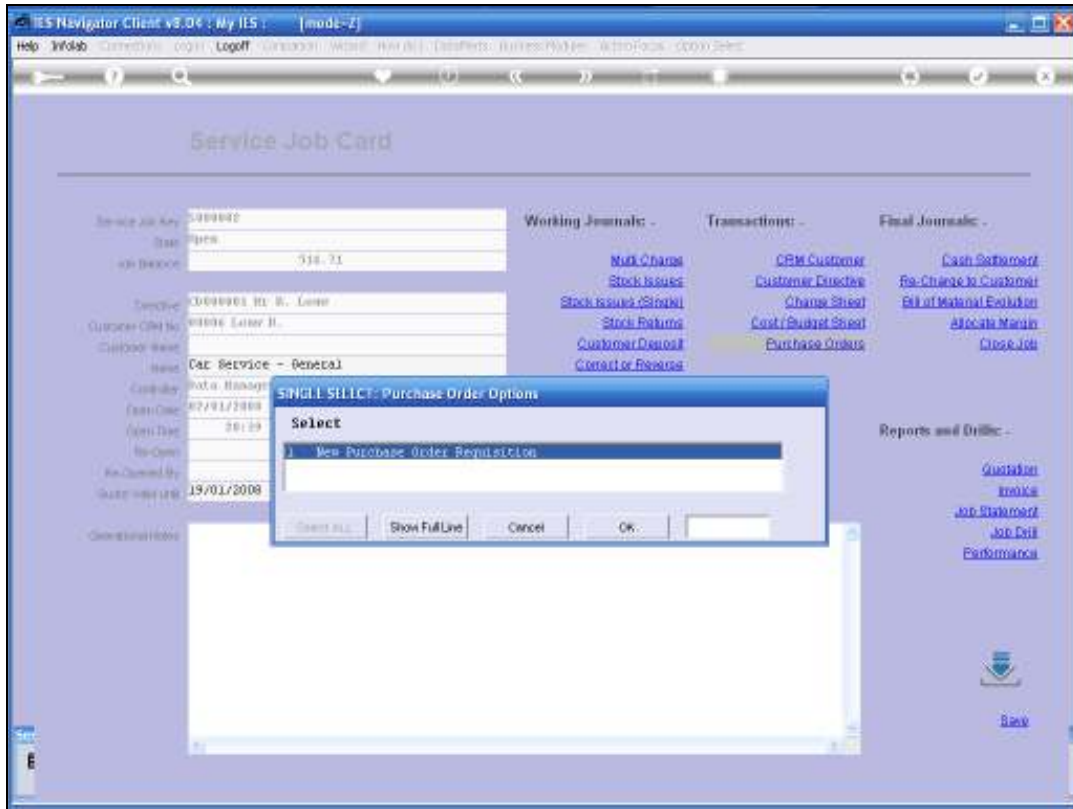


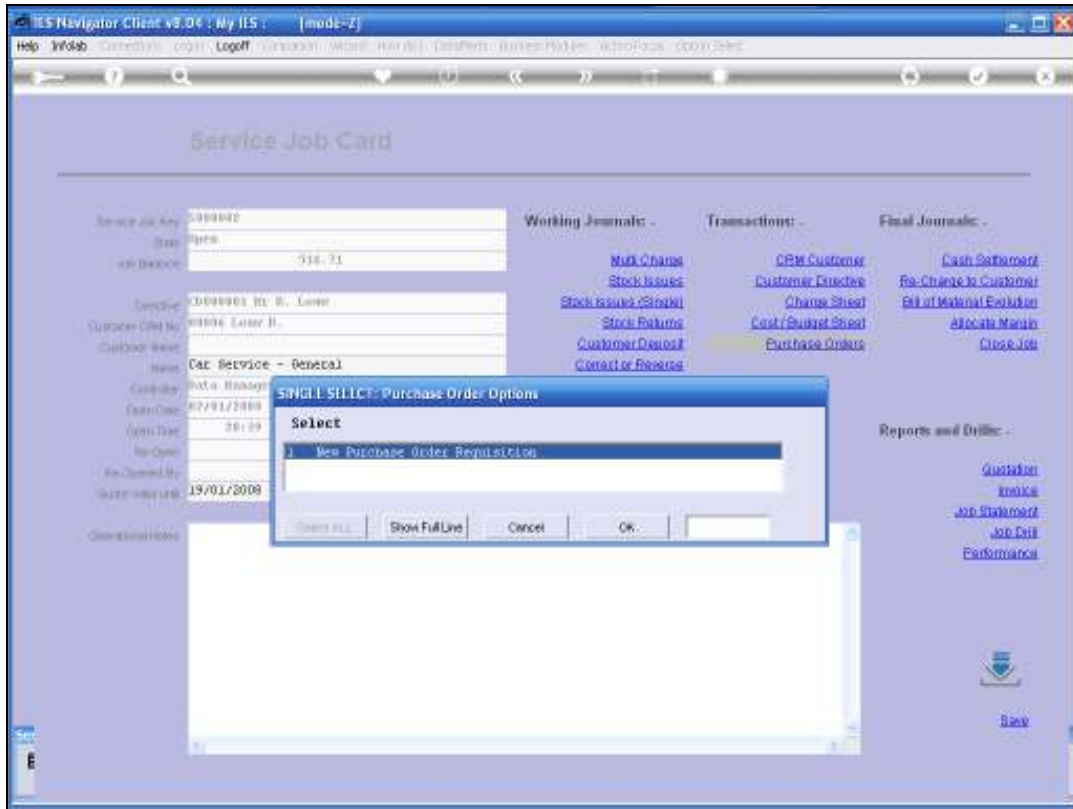
Slide 1  
Slide notes:

In this tutorial we are going to do an example of a Purchase Order on a Service Job.

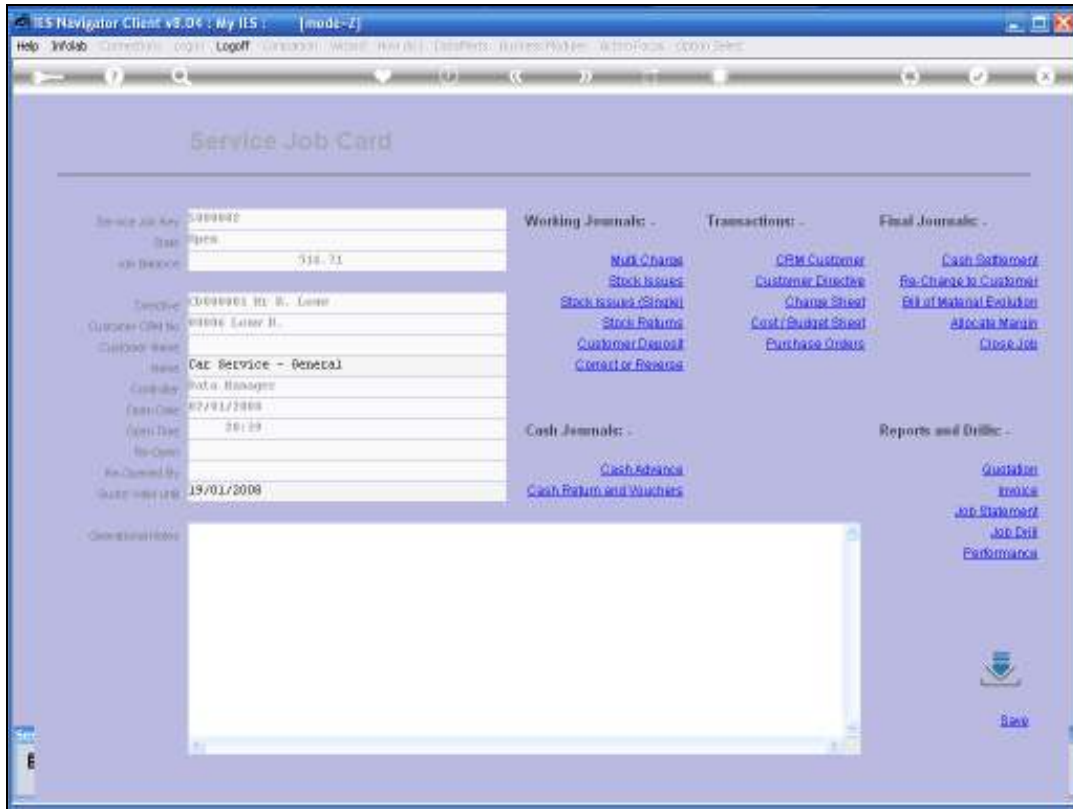


Slide 2  
Slide notes:

If there are no Purchase Orders on this Service Job already, then there will only be one Option i.e. to make a New Purchase Order Requisition.



Slide 3  
Slide notes:



Slide 4  
Slide notes:

IES Navigator Client v8.04 : My IIS : [mode-Z]

Help Submit Quit Functions Commands

### New Purchase Requisition (Service Jobs)

|               |                 |                   |              |                                    |
|---------------|-----------------|-------------------|--------------|------------------------------------|
| Date Ordered  | 03/01/2008      | Supplier Code     |              | <a href="#">Save</a>               |
| Tax Type      |                 | For Attention     |              | <a href="#">Delete Requisition</a> |
| Re-Charge Tax | 0 No Tax Record | Currency          | R            |                                    |
| Operator      | Data Manager    | Delivery Code     | DEF Default  | <a href="#">Refresh Totals</a>     |
| Originator    | IT Data Manager | Exp Delivery Date | 03/02/2008   |                                    |
| Buyer         | IT Data Manager | Order Total       |              |                                    |
| Period        | 25 (Dec 2007)   | Target Authorizer | Data Manager |                                    |
| PO Number     | S000002/1       |                   |              |                                    |

| >>> | Disect | Itm | Unit | Tax Incl | Price | Quantity | Actual | Descr |
|-----|--------|-----|------|----------|-------|----------|--------|-------|
| 1   |        |     |      |          |       |          |        |       |
|     |        |     |      |          |       |          |        |       |
|     |        |     |      |          |       |          |        |       |
|     |        |     |      |          |       |          |        |       |
|     |        |     |      |          |       |          |        |       |
|     |        |     |      |          |       |          |        |       |

Order Notes

[Add Item - To Service Job](#)

Slide 5  
Slide notes:

IES Navigator Client v8.04 : My IIS : [mode-Z]

Help Submit Quit Functions Commands

### New Purchase Requisition (Service Jobs)

|               |                 |                   |              |                                    |
|---------------|-----------------|-------------------|--------------|------------------------------------|
| Date Ordered  | 03/01/2008      | Supplier Code     |              | <a href="#">Back</a>               |
| Tax Type      |                 |                   |              | <a href="#">Delete Requisition</a> |
| Re-Charge Tax | 0 No Tax Record | For Attention     |              |                                    |
| Operator      | Data Manager    | Currency          |              |                                    |
| Originator    | IT Data Manager | Delivery Code     | DEF Default  | <a href="#">Refresh Totals</a>     |
| Buyer         | IT Data Manager | Exp Delivery Date | 03/02/2008   |                                    |
| Period        | 25 (Dec 2007)   | Order Total       |              |                                    |
| PO Number     | S000002/1       | Target Authorizer | Data Manager |                                    |

| >>> | Dissect | Qty | Unit | Tax Incl | Price | Quantity | Actual | Descr |
|-----|---------|-----|------|----------|-------|----------|--------|-------|
| 1   |         |     |      |          |       |          |        |       |
|     |         |     |      |          |       |          |        |       |
|     |         |     |      |          |       |          |        |       |
|     |         |     |      |          |       |          |        |       |
|     |         |     |      |          |       |          |        |       |
|     |         |     |      |          |       |          |        |       |
|     |         |     |      |          |       |          |        |       |

Order Notes

[Add Item - To Service Job](#)

Slide 6  
Slide notes:

IES Navigator Client v8.04 : My IIS : [mode-Z]

Help Submit Quit Functions Commands

### New Purchase Requisition (Service Jobs)

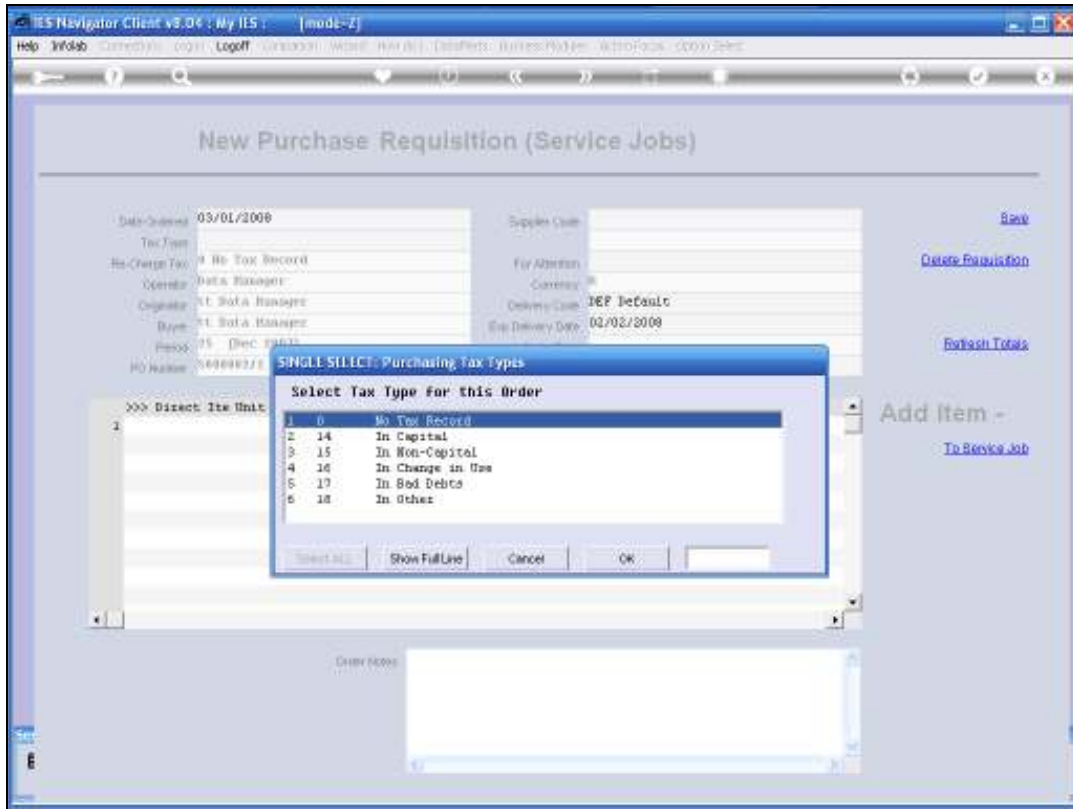
|               |                 |                   |              |                                    |
|---------------|-----------------|-------------------|--------------|------------------------------------|
| Date Ordered  | 03/01/2008      | Supplier Code     |              | <a href="#">Save</a>               |
| Tax Type      |                 | For Attention     |              | <a href="#">Delete Requisition</a> |
| Re-Charge Tax | 0 No Tax Record | Currency          |              |                                    |
| Operator      | Data Manager    | Delivery Code     | DEF Default  | <a href="#">Refresh Totals</a>     |
| Originator    | IT Data Manager | Exp Delivery Date | 03/02/2008   |                                    |
| Buyer         | IT Data Manager | Order Total       |              |                                    |
| Period        | 25 (Dec 2007)   | Target Authoriser | Data Manager |                                    |
| PO Number     | S000002/1       |                   |              |                                    |

| >>> | Dissect | Item | Unit | Tax Incl | Price | Quantity | Actual | Descr |
|-----|---------|------|------|----------|-------|----------|--------|-------|
| 1   |         |      |      |          |       |          |        |       |
|     |         |      |      |          |       |          |        |       |
|     |         |      |      |          |       |          |        |       |
|     |         |      |      |          |       |          |        |       |
|     |         |      |      |          |       |          |        |       |
|     |         |      |      |          |       |          |        |       |

Order Notes

[Add Item - To Service Job](#)

Slide 7  
Slide notes:



Slide 8  
Slide notes:





IES Navigator Client v8.04 : My IIS : [mode-Z]

Help Submit Quit Functions Commands

### New Purchase Requisition (Service Jobs)

|               |                 |                    |              |   |
|---------------|-----------------|--------------------|--------------|---|
| Date Ordered  | 03/01/2008      | Supplier Code      |              | <a href="#">Back</a>                          |
| Tax Type      | 15              | For Attention      |              | <a href="#">Delete Requisition</a>            |
| Re-Charge Tax | 0 No Tax Record | Currency           |              | <a href="#">Refresh Totals</a>                |
| Operator      | Data Manager    | Delivery Code      | JEF Default  | <a href="#">Add Item -<br/>To Service Job</a> |
| Originator    | IT Data Manager | Exp. Delivery Date | 03/02/2008   |   |
| Buyer         | IT Data Manager | Order Total        |              |   |
| Period        | 25 (Dec 2007)   | Target Authorizer  | Data Manager |   |
| PO Number     | S000002/1       |                    |              |   |

| >>> | Dissect | Item | Unit | Tax Incl | Price | Quantity | Actual | Descr |
|-----|---------|------|------|----------|-------|----------|--------|-------|
| 1   |         |      |      |          |       |          |        |       |
|     |         |      |      |          |       |          |        |       |
|     |         |      |      |          |       |          |        |       |
|     |         |      |      |          |       |          |        |       |
|     |         |      |      |          |       |          |        |       |
|     |         |      |      |          |       |          |        |       |

Order Notes

Slide 10  
Slide notes:

IES Navigator Client v8.04 : My IIS : [mode-Z]

Help Submit Quit Functions Commands

### New Purchase Requisition (Service Jobs)

|               |                   |                   |              |                                    |
|---------------|-------------------|-------------------|--------------|------------------------------------|
| Date Ordered  | 03/01/2008        | Supplier Code     |              | <a href="#">Back</a>               |
| Tax Type      | 15 In Non-Capital | For Attention     |              | <a href="#">Delete Requisition</a> |
| Re-Charge Tax | 0 No Tax Record   | Currency          |              |                                    |
| Operator      | Data Manager      | Delivery Code     | JEF Default  | <a href="#">Refresh Totals</a>     |
| Originator    | IT Data Manager   | Exp Delivery Date | 03/02/2008   |                                    |
| Buyer         | IT Data Manager   | Order Total       | 0.00         |                                    |
| Period        | 25 (Dec 2007)     | Target Authorizer | Data Manager |                                    |
| PO Number     | S000002/1         |                   |              |                                    |

| >>> | Disect | Itm | Unit | Tax Incl | Price | Quantity | Actual | Descr |
|-----|--------|-----|------|----------|-------|----------|--------|-------|
| 1   |        |     |      |          |       |          |        |       |
|     |        |     |      |          |       |          |        |       |
|     |        |     |      |          |       |          |        |       |
|     |        |     |      |          |       |          |        |       |
|     |        |     |      |          |       |          |        |       |
|     |        |     |      |          |       |          |        |       |

[Add Item - To Service Job](#)

Order Notes

Slide 11  
Slide notes:

IES Navigator Client v8.04 : My IIS : [mode-Z]

Help Submit Quit Functions Commands

### New Purchase Requisition (Service Jobs)

|               |                   |                   |              |                                    |
|---------------|-------------------|-------------------|--------------|------------------------------------|
| Date Ordered  | 03/01/2008        | Supplier Code     | ed           | <a href="#">Back</a>               |
| Tax Type      | 15 In Non-Capital | For Attention     |              | <a href="#">Delete Requisition</a> |
| Re-Charge Tax | 0 No Tax Record   | Currency          | R            |                                    |
| Operator      | Data Manager      | Delivery Code     | DEF Default  | <a href="#">Refresh Totals</a>     |
| Originator    | IT Data Manager   | Exp Delivery Date | 03/02/2008   |                                    |
| Buyer         | IT Data Manager   | Order Total       | 0.00         |                                    |
| Period        | 25 (Dec 2007)     | Target Authorizer | Data Manager |                                    |
| PO Number     | S000002/1         |                   |              |                                    |

| >>> | Disect | Itm | Unit | Tax Incl | Price | Quantity | Actual | Descr |
|-----|--------|-----|------|----------|-------|----------|--------|-------|
| 1   |        |     |      |          |       |          |        |       |
|     |        |     |      |          |       |          |        |       |
|     |        |     |      |          |       |          |        |       |
|     |        |     |      |          |       |          |        |       |
|     |        |     |      |          |       |          |        |       |
|     |        |     |      |          |       |          |        |       |

Order Notes

[Add Item - To Service Job](#)

Slide 12  
Slide notes:

IES Navigator Client v8.04 : My IIS : [mode-Z]

Help Submit Quit Functions Commands

### New Purchase Requisition (Service Jobs)

|               |                   |                   |              |                                    |
|---------------|-------------------|-------------------|--------------|------------------------------------|
| Date Ordered  | 03/01/2008        | Supplier Code     | e1           | <a href="#">Back</a>               |
| Tax Type      | 15 In Non-Capital | For Attention     |              | <a href="#">Delete Requisition</a> |
| Re-Charge Tax | 0 No Tax Record   | Currency          | R            |                                    |
| Operator      | Data Manager      | Delivery Code     | DEF Default  |                                    |
| Originator    | IT Data Manager   | Exp Delivery Date | 03/02/2008   | <a href="#">Refresh Totals</a>     |
| Buyer         | IT Data Manager   | Order Total       | 0.00         |                                    |
| Period        | 25 (Dec 2007)     | Target Authorizer | Data Manager |                                    |
| PO Number     | S000002/1         |                   |              |                                    |

| >>> | Disect | Itm | Unit | Tax Incl | Price | Quantity | Actual | Descr |
|-----|--------|-----|------|----------|-------|----------|--------|-------|
| 1   |        |     |      |          |       |          |        |       |
|     |        |     |      |          |       |          |        |       |
|     |        |     |      |          |       |          |        |       |
|     |        |     |      |          |       |          |        |       |
|     |        |     |      |          |       |          |        |       |
|     |        |     |      |          |       |          |        |       |

Order Notes

[Add Item - To Service Job](#)

Slide 13  
Slide notes:

IES Navigator Client v8.04 : My IIS : [mode-Z]

Help Submit Quit Functions Commands

### New Purchase Requisition (Service Jobs)

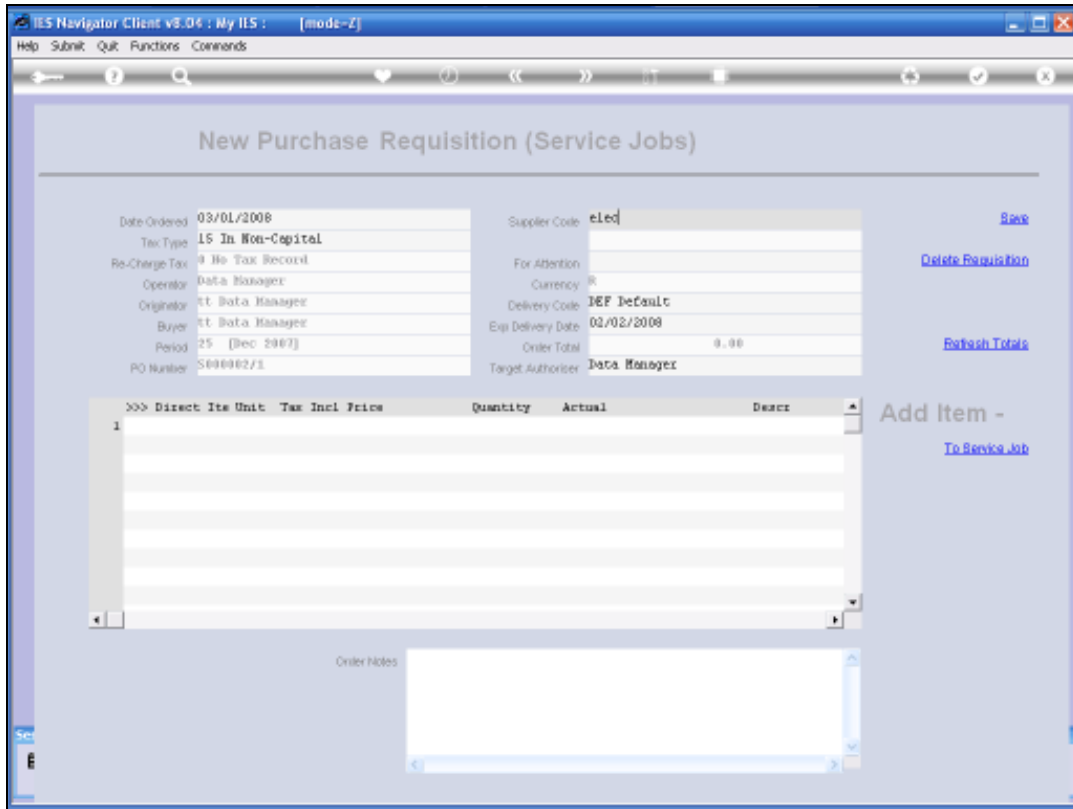
|               |                   |                   |              |                                    |
|---------------|-------------------|-------------------|--------------|------------------------------------|
| Date Ordered  | 03/01/2008        | Supplier Code     | eie          | <a href="#">Back</a>               |
| Tax Type      | 15 In Non-Capital | For Attention     |              | <a href="#">Delete Requisition</a> |
| Re-Charge Tax | 0 No Tax Record   | Currency          | R            |                                    |
| Operator      | Data Manager      | Delivery Code     | DEF Default  |                                    |
| Originator    | IT Data Manager   | Exp Delivery Date | 03/02/2008   | <a href="#">Refresh Totals</a>     |
| Buyer         | IT Data Manager   | Order Total       | 0.00         |                                    |
| Period        | 25 (Dec 2007)     | Target Authorizer | Data Manager |                                    |
| PO Number     | S000002/1         |                   |              |                                    |

| >>> | Disect | Itm | Unit | Tax Incl | Price | Quantity | Actual | Descr |
|-----|--------|-----|------|----------|-------|----------|--------|-------|
| 1   |        |     |      |          |       |          |        |       |
|     |        |     |      |          |       |          |        |       |
|     |        |     |      |          |       |          |        |       |
|     |        |     |      |          |       |          |        |       |
|     |        |     |      |          |       |          |        |       |

Order Notes

[Add Item - To Service Job](#)

Slide 14  
Slide notes:



Slide 15  
Slide notes:

IES Navigator Client v8.04 : My IIS : [mode-Z]

Help Submit Quit Functions Commands

### New Purchase Requisition (Service Jobs)

|               |                   |                   |              |                                    |
|---------------|-------------------|-------------------|--------------|------------------------------------|
| Date Ordered  | 03/01/2008        | Supplier Code     | elec         | <a href="#">Back</a>               |
| Tax Type      | 15 In Non-Capital | For Attention     |              | <a href="#">Delete Requisition</a> |
| Re-Charge Tax | 0 No Tax Record   | Currency          | R            |                                    |
| Operator      | Data Manager      | Delivery Code     | DEF Default  |                                    |
| Originator    | IT Data Manager   | Exp Delivery Date | 03/02/2008   | <a href="#">Refresh Totals</a>     |
| Buyer         | IT Data Manager   | Order Total       | 0.00         |                                    |
| Period        | 25 (Dec 2007)     | Target Authorizer | Data Manager |                                    |
| PO Number     | S000002/1         |                   |              |                                    |

| >>> | Dissect | Qty | Unit | Tax Incl | Price | Quantity | Actual | Descr |
|-----|---------|-----|------|----------|-------|----------|--------|-------|
| 1   |         |     |      |          |       |          |        |       |
|     |         |     |      |          |       |          |        |       |
|     |         |     |      |          |       |          |        |       |
|     |         |     |      |          |       |          |        |       |
|     |         |     |      |          |       |          |        |       |
|     |         |     |      |          |       |          |        |       |

Order Notes

[Add Item - To Service Job](#)

Slide 16  
Slide notes:



IES Navigator Client v8.04 : My IIS : [mode-Z]

Help Submit Quit Functions Commands

### New Purchase Requisition (Service Jobs)

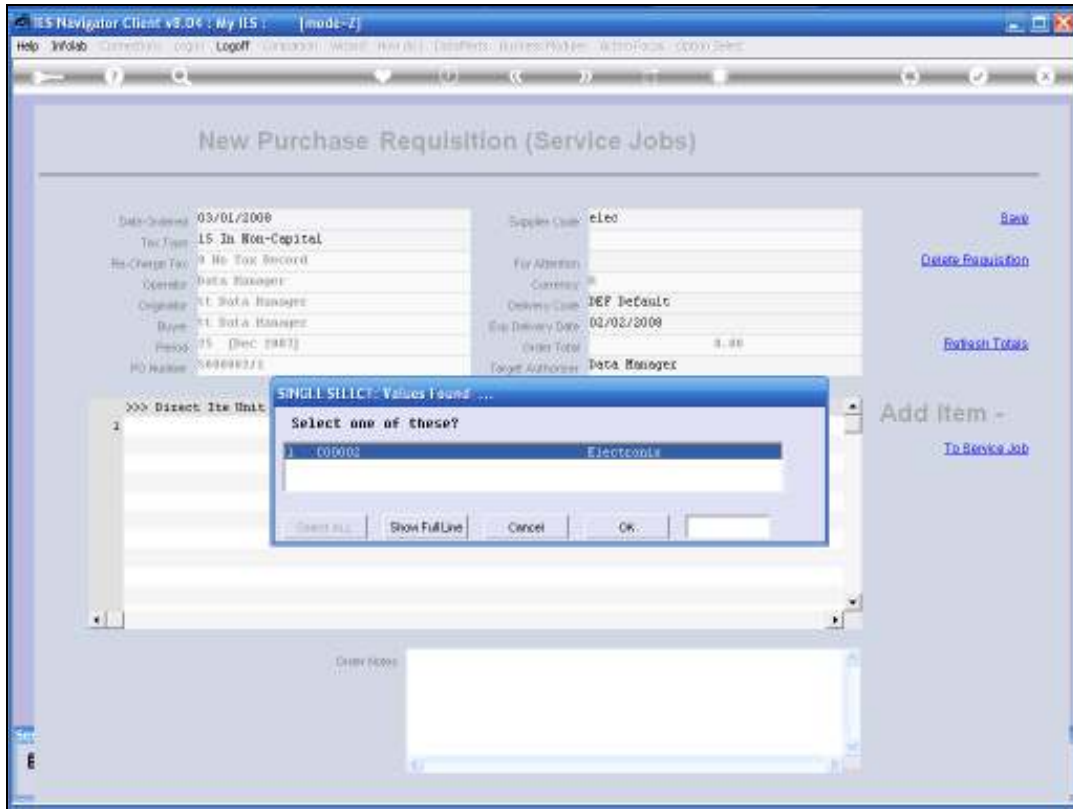
|               |                   |                   |              |                                    |
|---------------|-------------------|-------------------|--------------|------------------------------------|
| Date Ordered  | 03/01/2008        | Supplier Code     | elec         | <a href="#">Back</a>               |
| Tax Type      | 15 In Non-Capital | For Attention     |              | <a href="#">Delete Requisition</a> |
| Re-Charge Tax | 0 No Tax Record   | Currency          | R            |                                    |
| Operator      | Data Manager      | Delivery Code     | DEF Default  |                                    |
| Originator    | IT Data Manager   | Exp Delivery Date | 03/02/2008   | <a href="#">Refresh Totals</a>     |
| Buyer         | IT Data Manager   | Order Total       | 0.00         |                                    |
| Period        | 25 (Dec 2007)     | Target Authorizer | Data Manager |                                    |
| PO Number     | S000002/1         |                   |              |                                    |

| >>> | Dissect | Qty | Unit | Tax Incl | Price | Quantity | Actual | Descr |
|-----|---------|-----|------|----------|-------|----------|--------|-------|
| 1   |         |     |      |          |       |          |        |       |
|     |         |     |      |          |       |          |        |       |
|     |         |     |      |          |       |          |        |       |
|     |         |     |      |          |       |          |        |       |
|     |         |     |      |          |       |          |        |       |
|     |         |     |      |          |       |          |        |       |

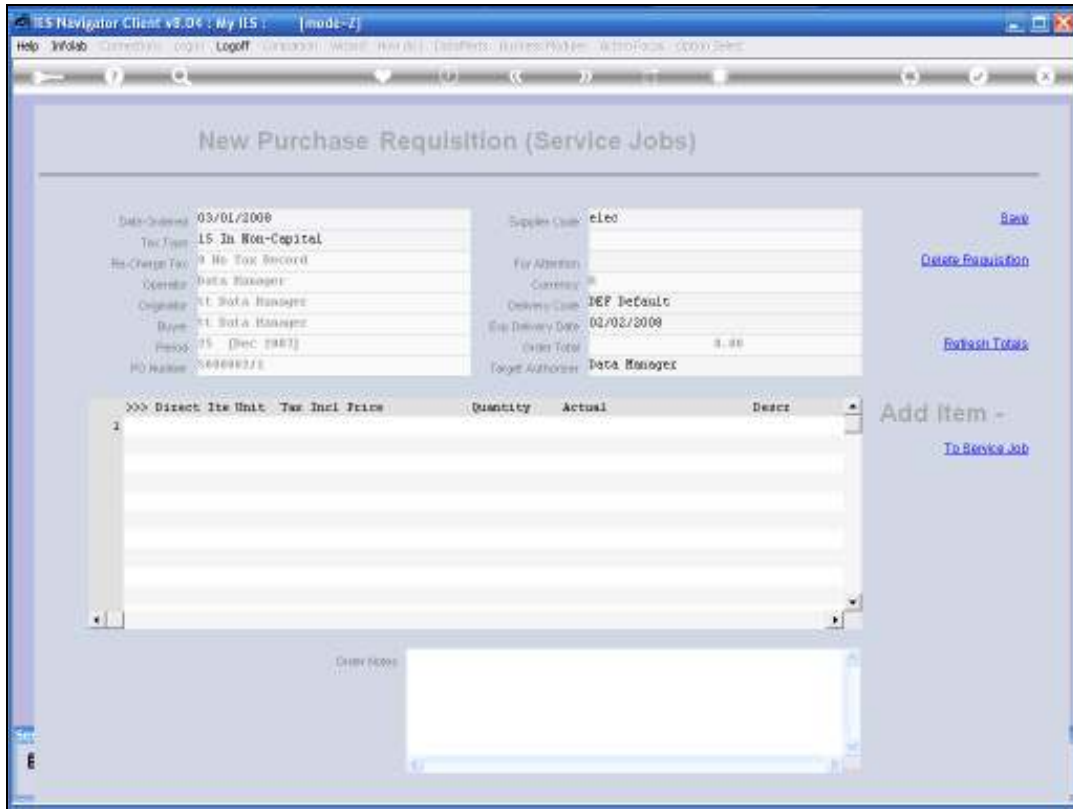
Order Notes

[Add Item - To Service Job](#)

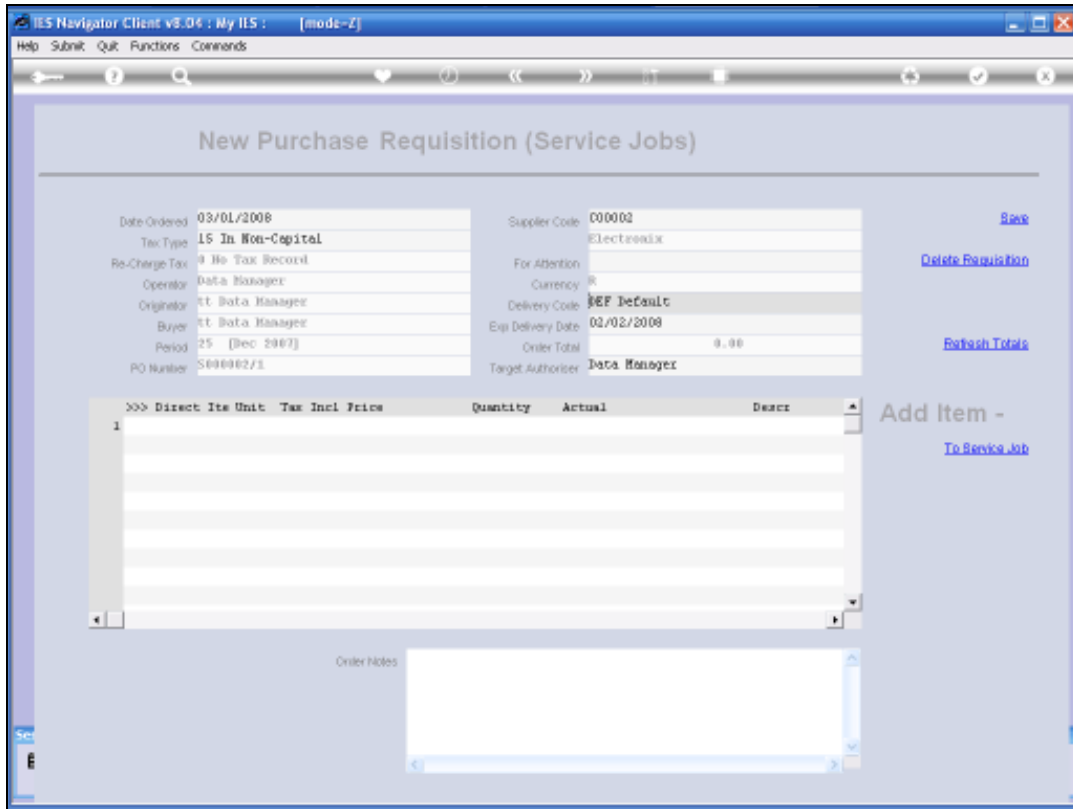
Slide 17  
Slide notes:



Slide 18  
Slide notes:



Slide 19  
Slide notes:



Slide 20  
Slide notes:

Once we have established the basic parameters on the Purchase Order, and the Supplier, I am ready to add one or more Items to this Purchase Order to the Service Job itself.

IES Navigator Client v8.04 : My IIS : [mode-Z]

Help Submit Quit Functions Commands

### New Purchase Requisition (Service Jobs)

|               |                   |                   |              |                                    |
|---------------|-------------------|-------------------|--------------|------------------------------------|
| Date Ordered  | 03/01/2008        | Supplier Code     | 00002        | <a href="#">Back</a>               |
| Tax Type      | 15 In Non-Capital |                   | Electreadix  | <a href="#">Delete Requisition</a> |
| Re-Charge Tax | 0 No Tax Record   | For Attention     |              |                                    |
| Operator      | Data Manager      | Currency          | \$           |                                    |
| Originator    | IT Data Manager   | Delivery Code     | 267 DeCapLc  | <a href="#">Refresh Totals</a>     |
| Buyer         | IT Data Manager   | Exp Delivery Date | 03/02/2008   |                                    |
| Period        | 25 (Dec 2007)     | Order Total       | 0.00         |                                    |
| PO Number     | S000002/1         | Target Authorizer | Data Manager |                                    |

| >>> | Dissect | Qty | Unit | Tax Incl | Price | Quantity | Actual | Descr |
|-----|---------|-----|------|----------|-------|----------|--------|-------|
| 1   |         |     |      |          |       |          |        |       |
|     |         |     |      |          |       |          |        |       |
|     |         |     |      |          |       |          |        |       |
|     |         |     |      |          |       |          |        |       |
|     |         |     |      |          |       |          |        |       |
|     |         |     |      |          |       |          |        |       |
|     |         |     |      |          |       |          |        |       |

Order Notes

[Add Item - To Service Job](#)

Slide 21  
Slide notes:

IES Navigator Client v8.04 : My IIS : [mode-Z]

Help Submit Quit Functions Commands

### New Purchase Requisition (Service Jobs)

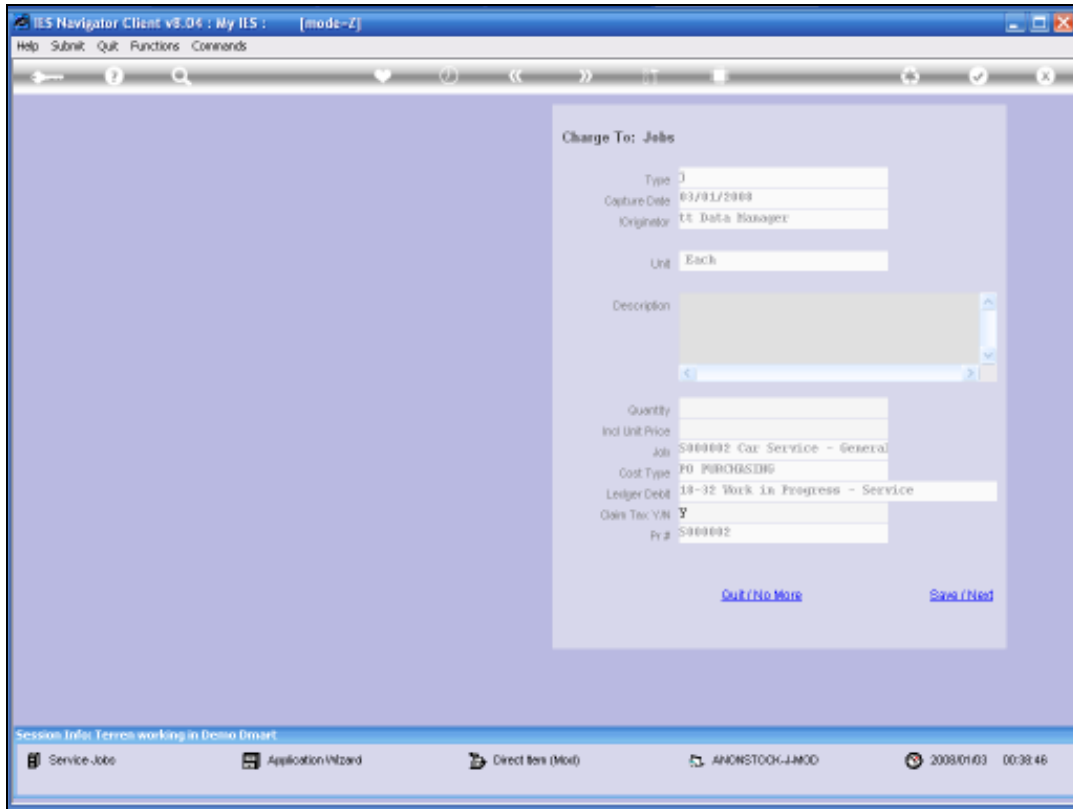
|               |                   |                   |              |                                    |
|---------------|-------------------|-------------------|--------------|------------------------------------|
| Date Ordered  | 03/01/2008        | Supplier Code     | 00002        | <a href="#">Back</a>               |
| Tax Type      | 15 In Non-Capital |                   | Electreadix  | <a href="#">Delete Requisition</a> |
| Re-Charge Tax | 0 No Tax Record   | For Attention     |              |                                    |
| Operator      | Data Manager      | Currency          | R            |                                    |
| Originator    | IT Data Manager   | Delivery Code     | IEF          | <a href="#">Refresh Totals</a>     |
| Buyer         | IT Data Manager   | Exp Delivery Date | 03/02/2008   |                                    |
| Period        | 25 (Dec 2007)     | Order Total       | 0.00         |                                    |
| PO Number     | S000002/1         | Target Authorizer | Data Manager |                                    |

| >>> | Dissect | Qty | Unit | Tax Incl | Price | Quantity | Actual | Descr |
|-----|---------|-----|------|----------|-------|----------|--------|-------|
| 1   |         |     |      |          |       |          |        |       |
|     |         |     |      |          |       |          |        |       |
|     |         |     |      |          |       |          |        |       |
|     |         |     |      |          |       |          |        |       |
|     |         |     |      |          |       |          |        |       |
|     |         |     |      |          |       |          |        |       |

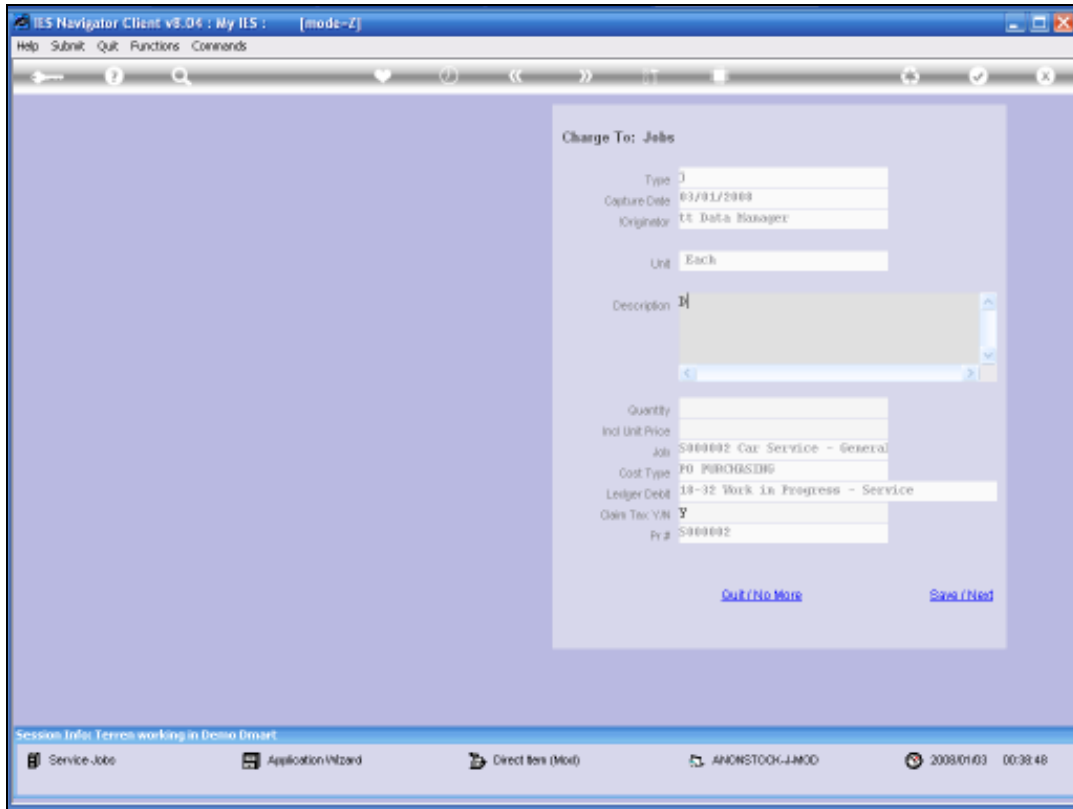
[Add Item - To Requisition](#)

Order Notes

Slide 22  
Slide notes:

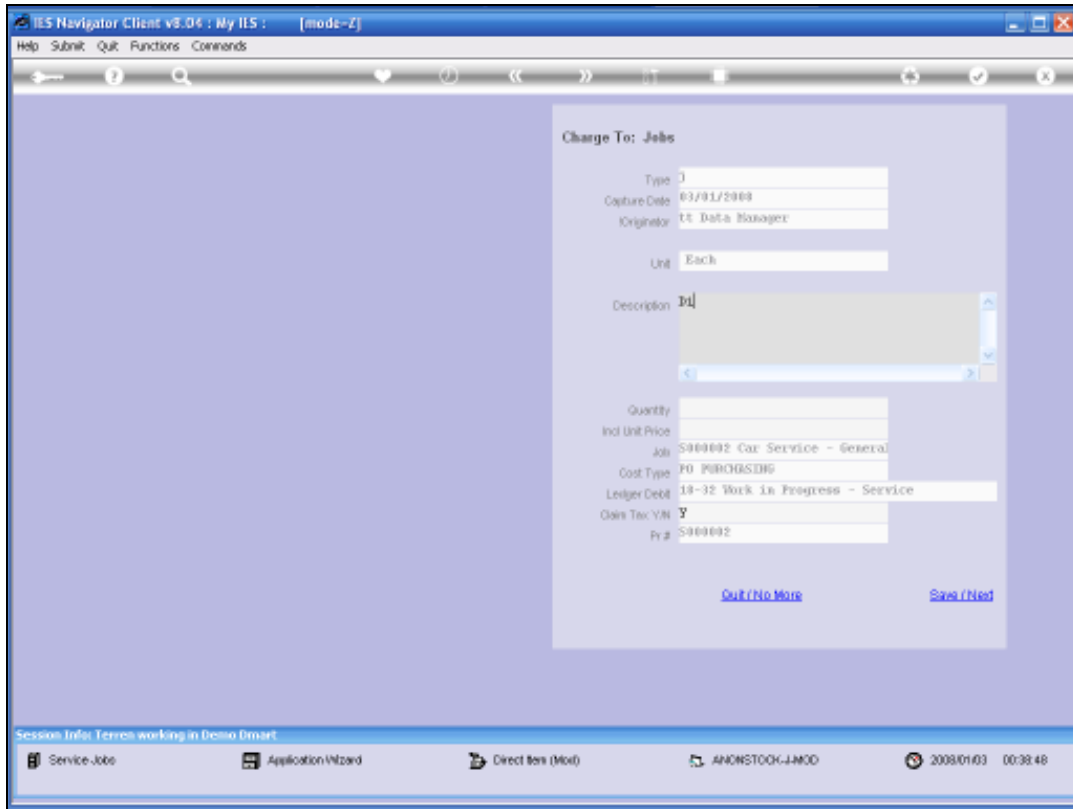


Slide 23  
Slide notes:

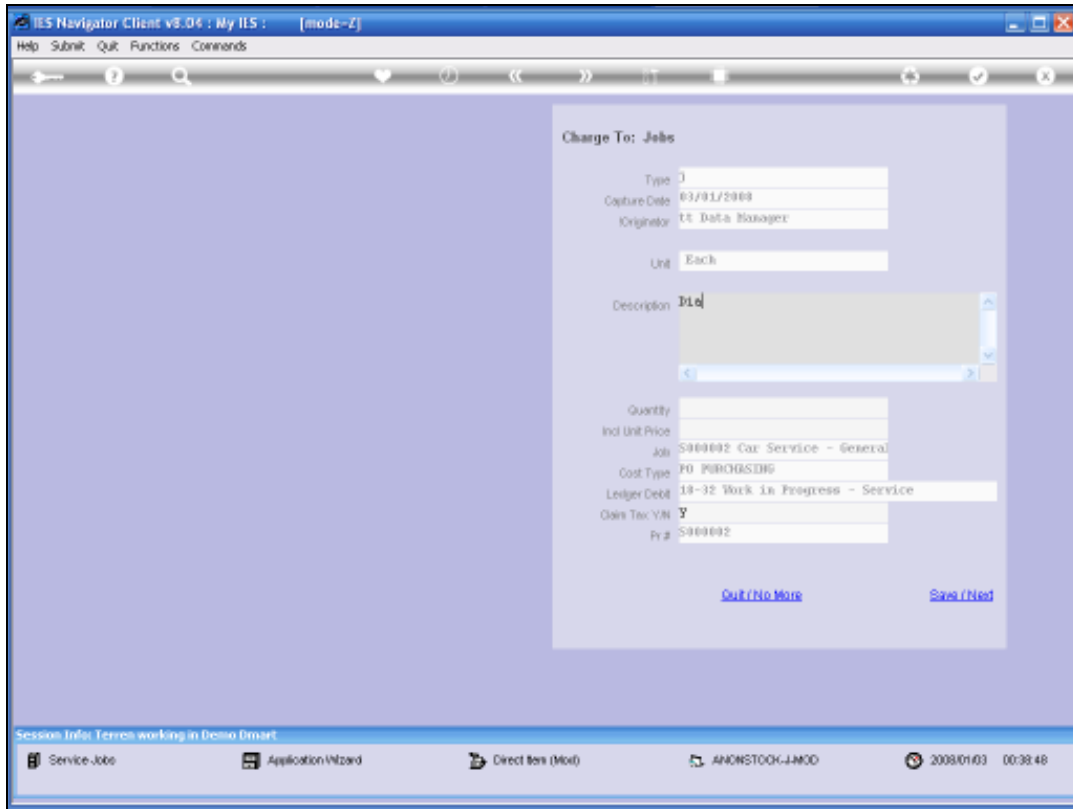


Slide 24  
Slide notes:





Slide 25  
Slide notes:



Slide 26  
Slide notes:

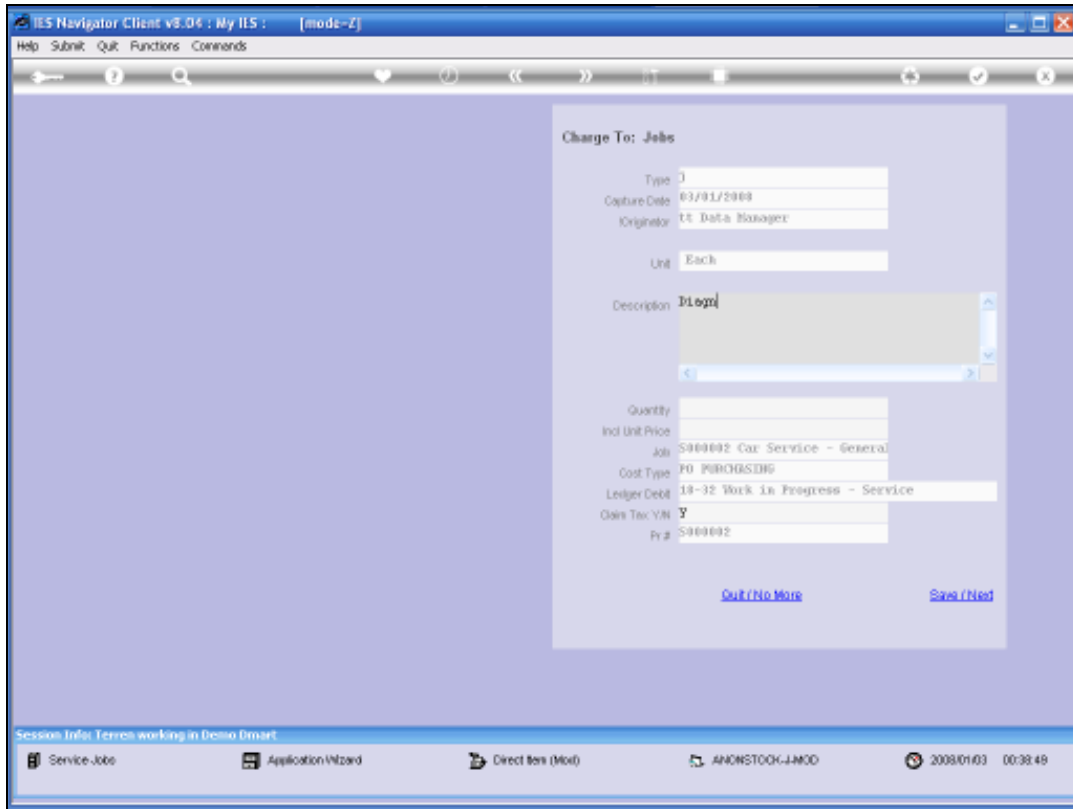
The screenshot shows a web-based application window titled "IES Navigator Client vs.04 : My IIS : [mode-Z]". The window contains a "Charge To: Jobs" form with the following fields and values:

|                |                                  |
|----------------|----------------------------------|
| Type           | 0                                |
| Capture Date   | 03/01/2009                       |
| Originator     | TE Data Manager                  |
| Unit           | Each                             |
| Description    | Blow                             |
| Quantity       |                                  |
| Ind Unit Price |                                  |
| Job            | S900002 Car Service - General    |
| Cost Type      | FD PURCHASING                    |
| Ledger Debit   | 18-32 Work In Progress - Service |
| Owns Tax Y/N   | Y                                |
| Prg            | S900002                          |

At the bottom of the form are two buttons: "Quit (No More)" and "Save (Next)".

Below the form, a status bar displays "Session Info: Teresa working in Demo Smart". At the very bottom, a navigation bar includes icons for "Service Job", "Application Wizard", "Direct Item (Mod)", "ANONSTOCK-IMCO", and a clock showing "2008/01/03 00:38:48".

Slide 27  
Slide notes:



Slide 28  
Slide notes:

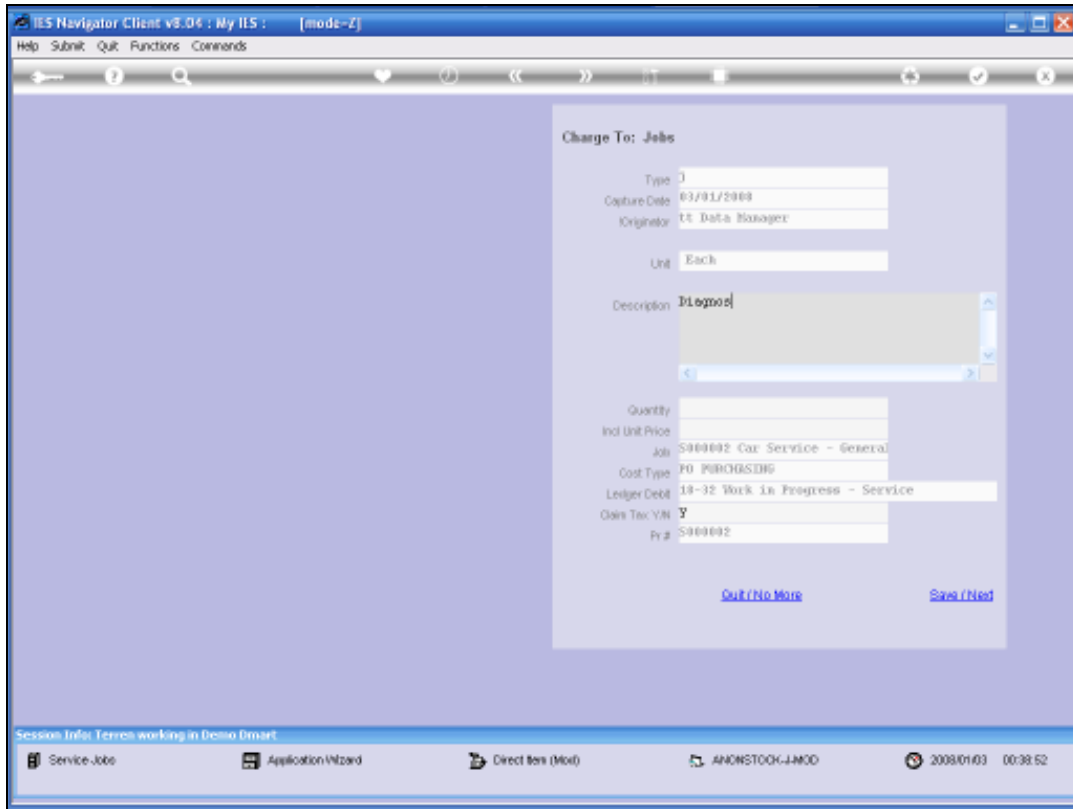
The screenshot shows a web-based application window titled "IES Navigator Client vs.04 : My IIS : [mode-Z]". The window contains a "Charge To: Jobs" form with the following fields and values:

|                |                                  |
|----------------|----------------------------------|
| Type           | 0                                |
| Capture Date   | 03/01/2009                       |
| Originator     | TE Data Manager                  |
| Unit           | Each                             |
| Description    | Diagno                           |
| Quantity       |                                  |
| Ind Unit Price |                                  |
| Job            | S000002 Car Service - General    |
| Cost Type      | FD PURCHASING                    |
| Ledger Debit   | 18-32 Work In Progress - Service |
| Owrs Tax Y/N   | Y                                |
| Pr g           | S000002                          |

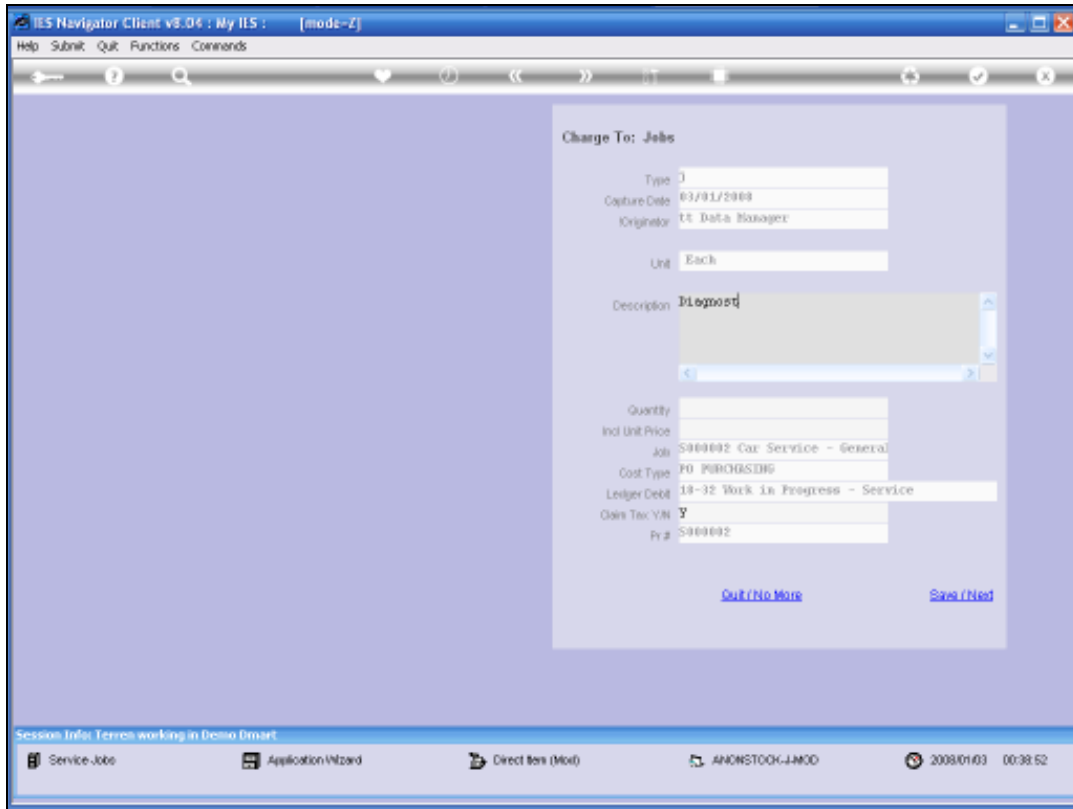
At the bottom of the form are two buttons: "Quit (No More)" and "Save (Next)".

Below the form, a status bar displays "Session Info: Teresa working in Demo Smart". At the very bottom, a navigation bar includes icons for "Service Job", "Application Wizard", "Direct Item (Mod)", and "ANONSTOCK-IMCO", along with a clock showing "2008/01/03 00:38:48".

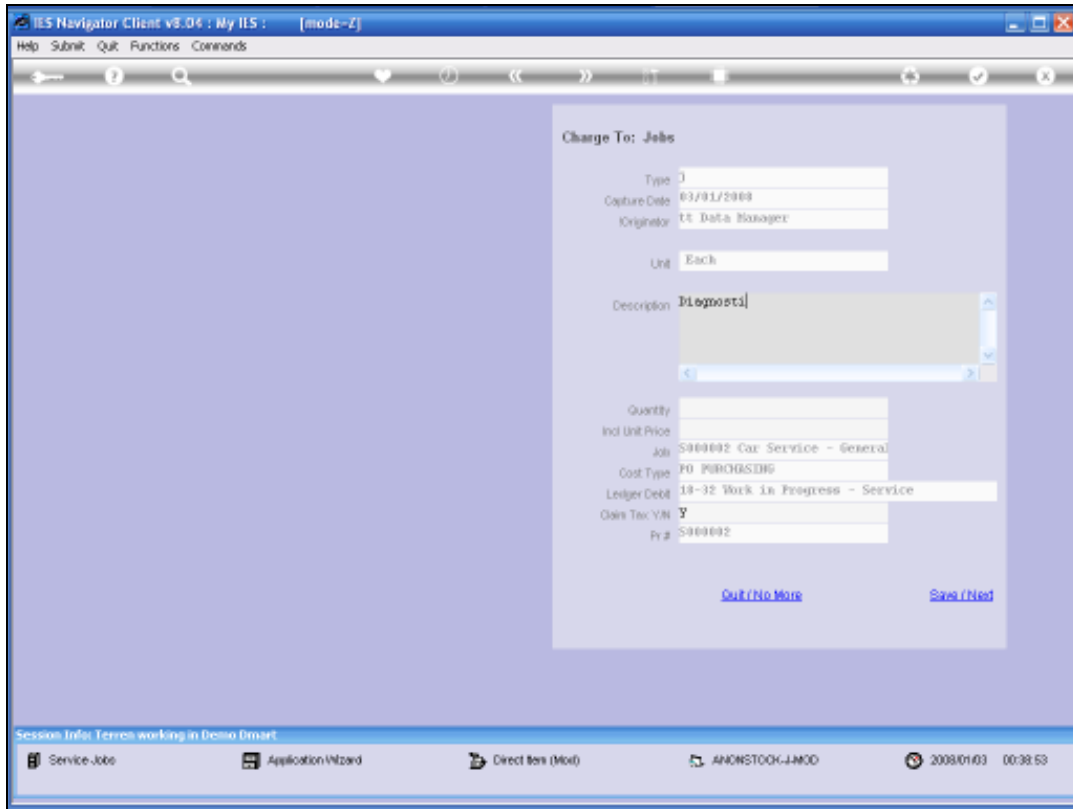
Slide 29  
Slide notes:



Slide 30  
Slide notes:

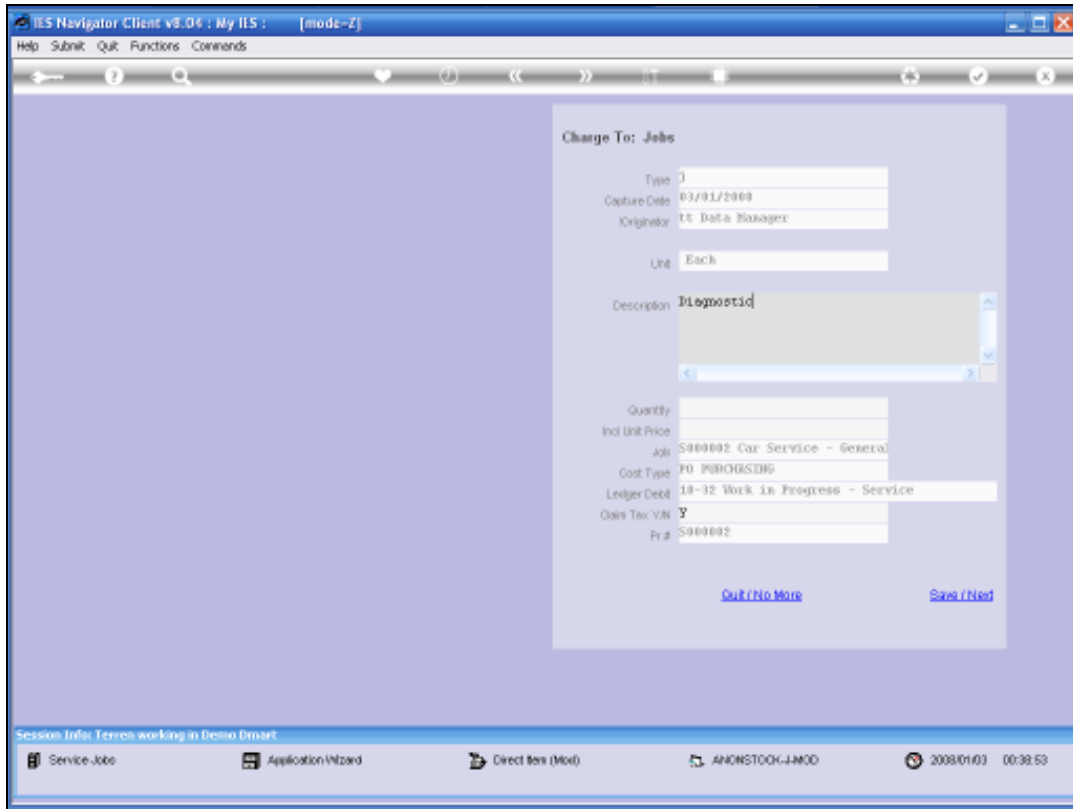


Slide 31  
Slide notes:

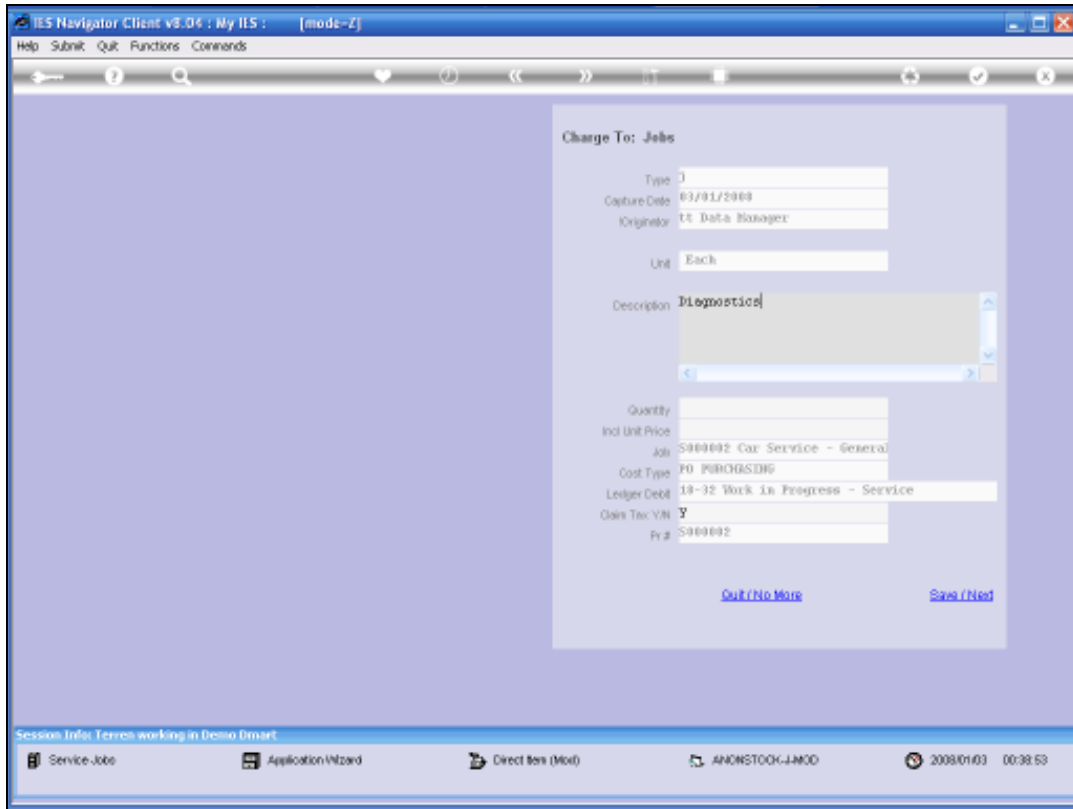


Slide 32  
Slide notes:

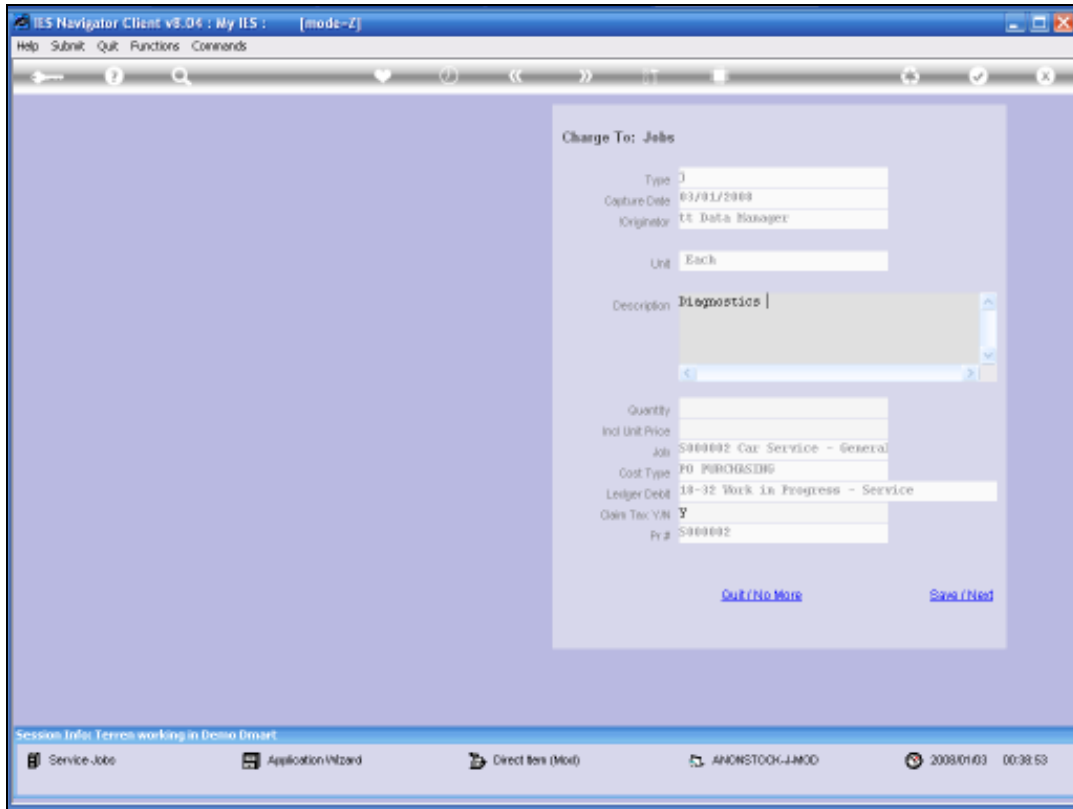




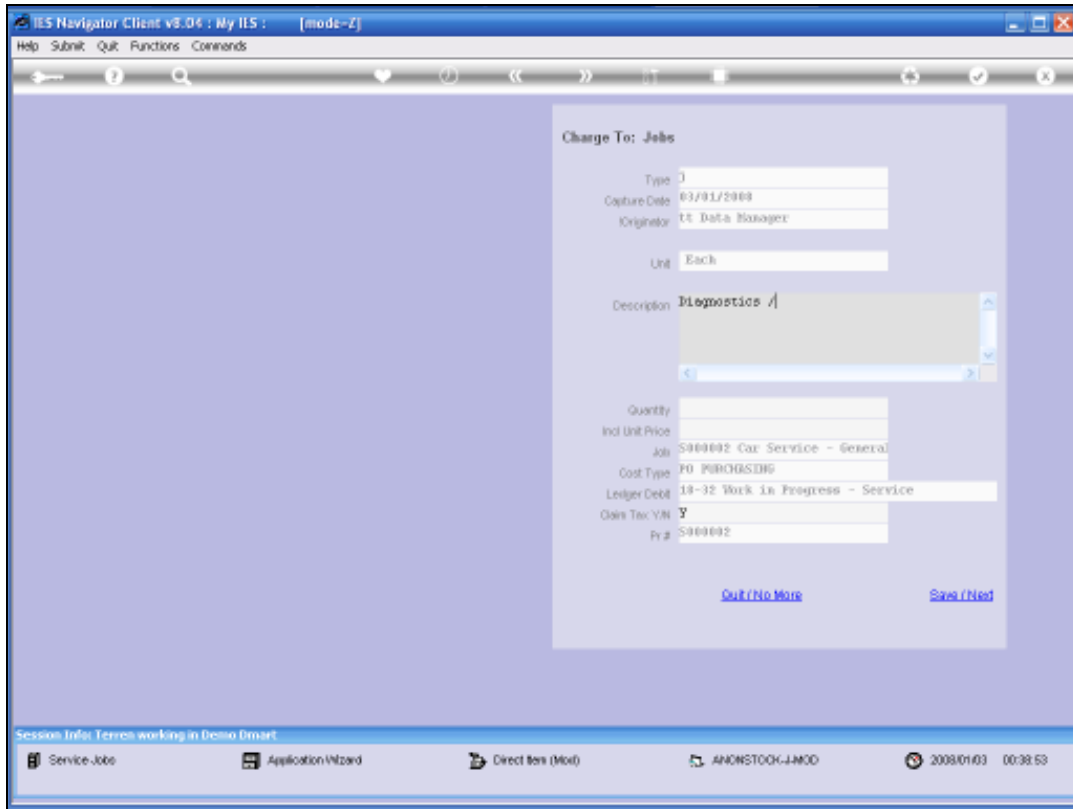
Slide 33  
Slide notes:



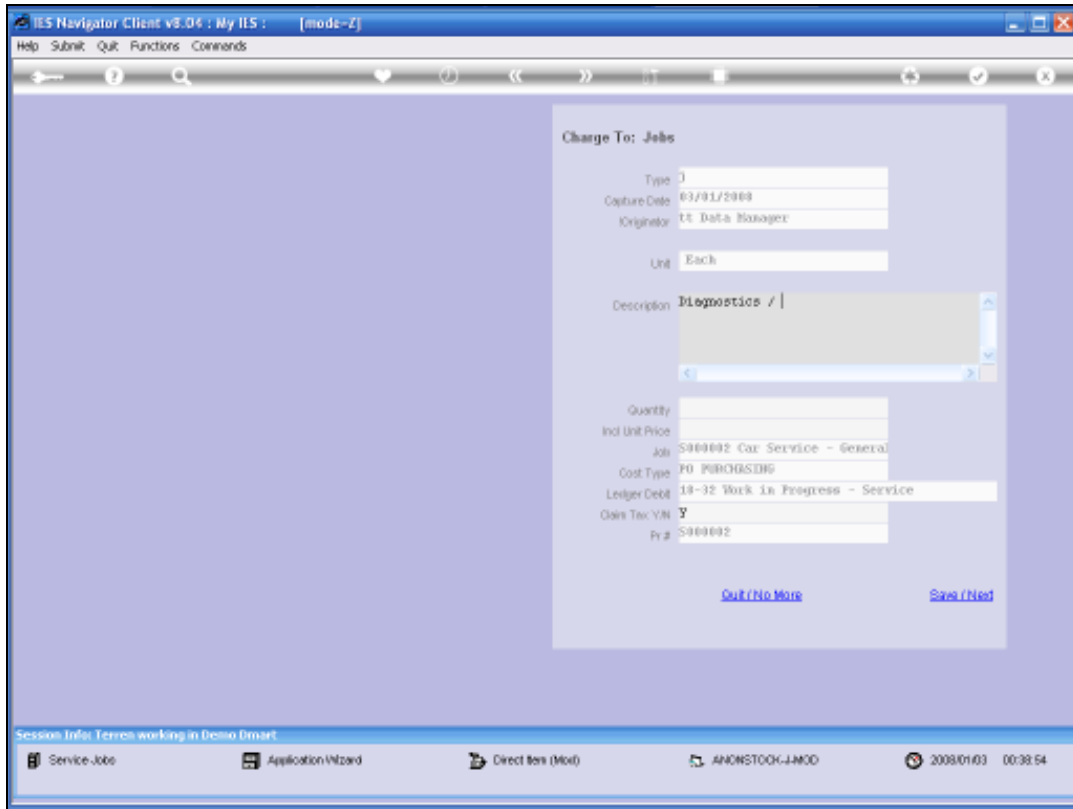
Slide 34  
Slide notes:



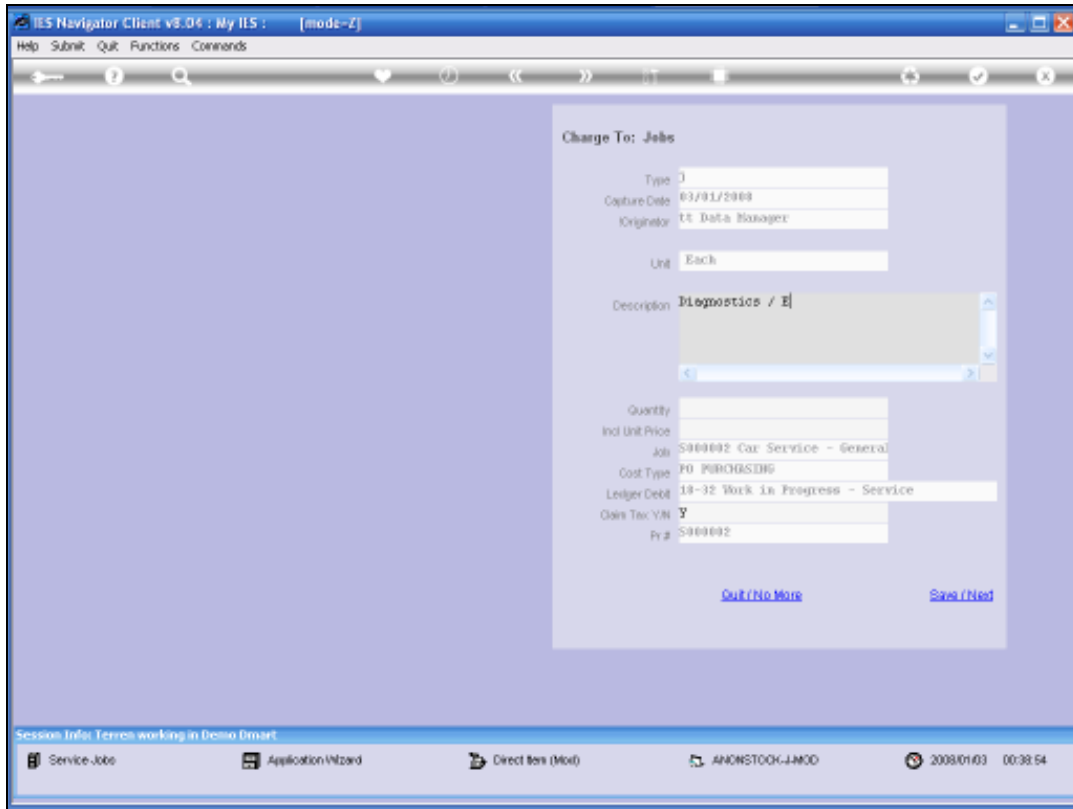
Slide 35  
Slide notes:



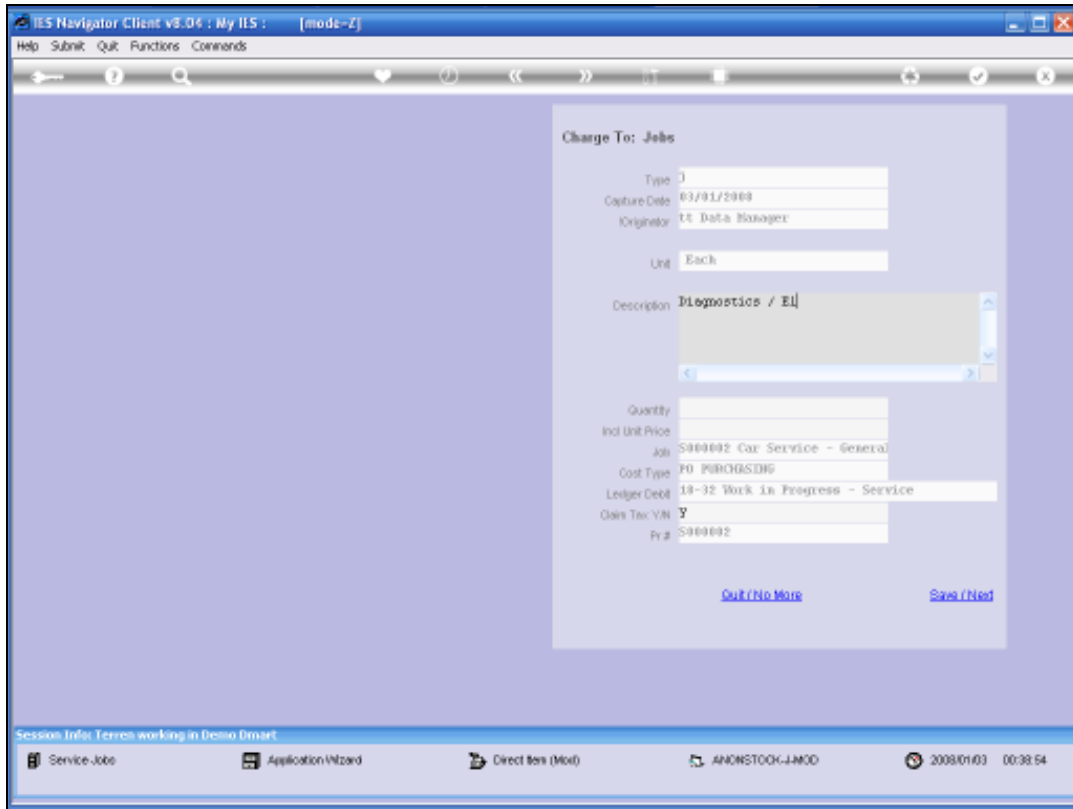
Slide 36  
Slide notes:



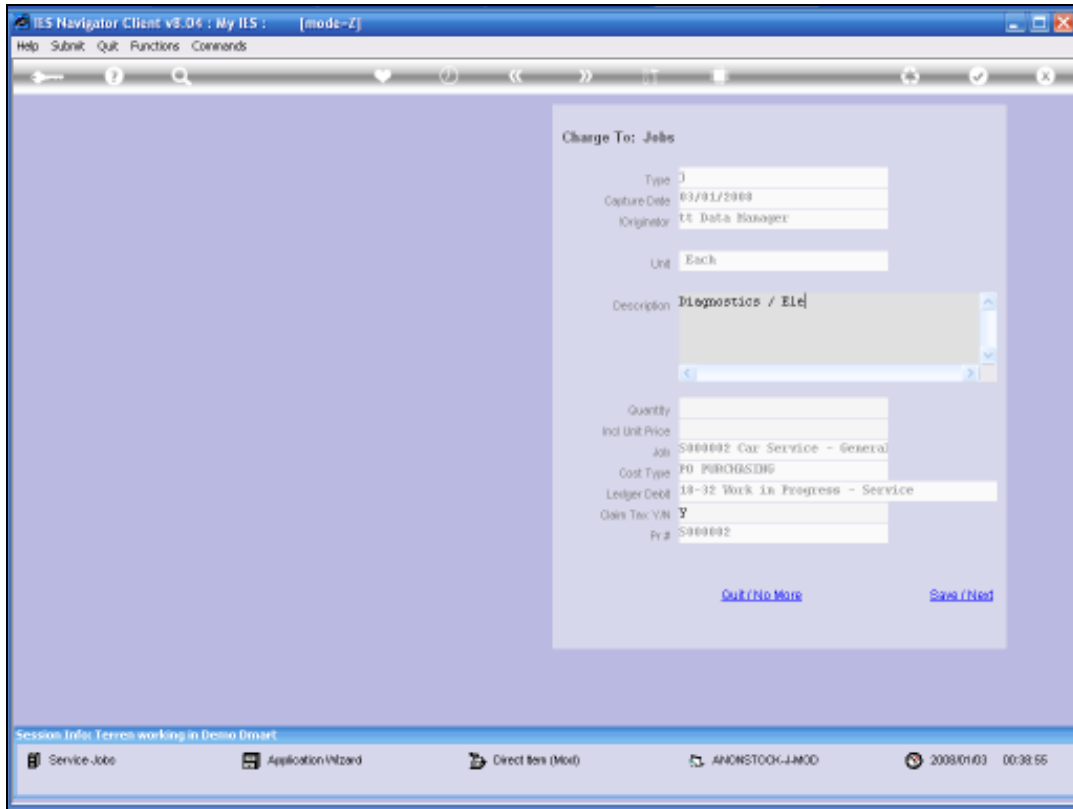
Slide 37  
Slide notes:



Slide 38  
Slide notes:

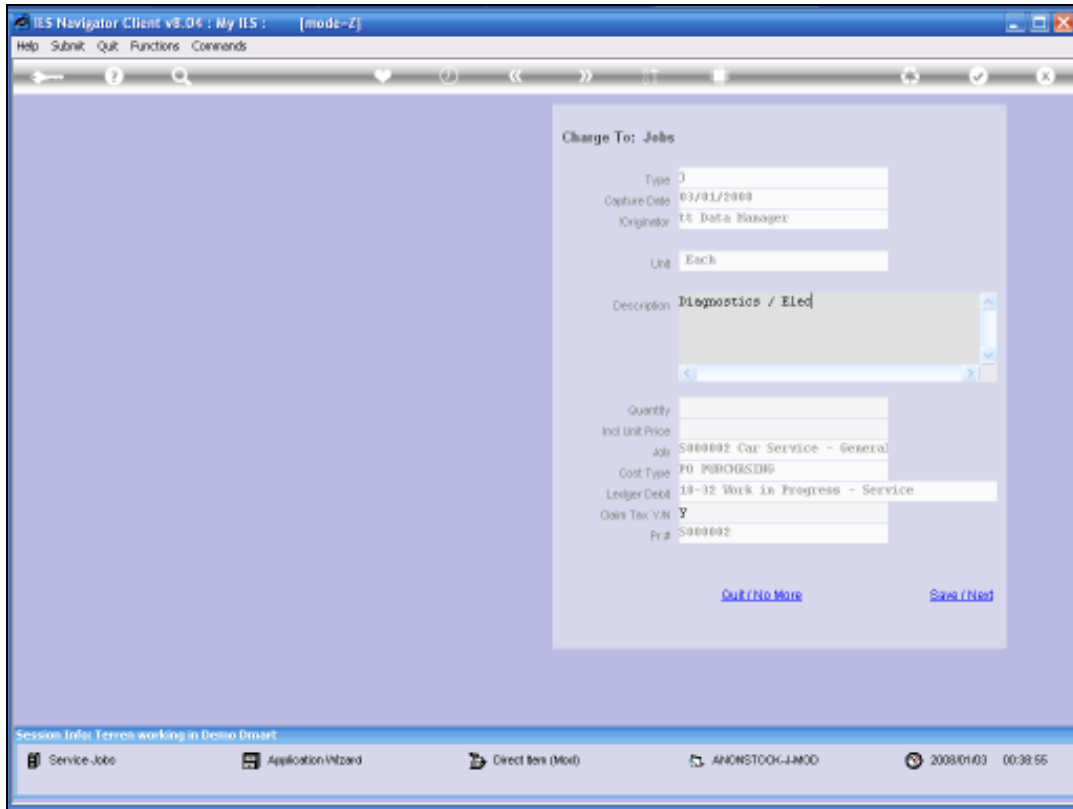


Slide 39  
Slide notes:

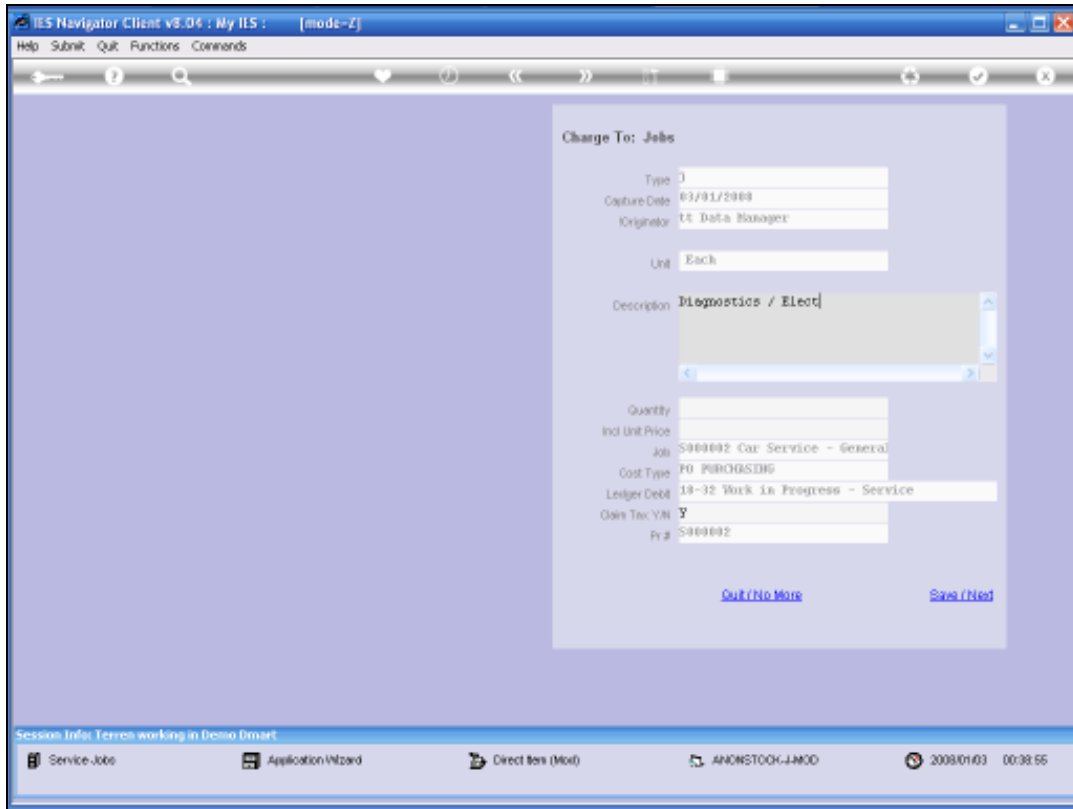


Slide 40  
Slide notes:

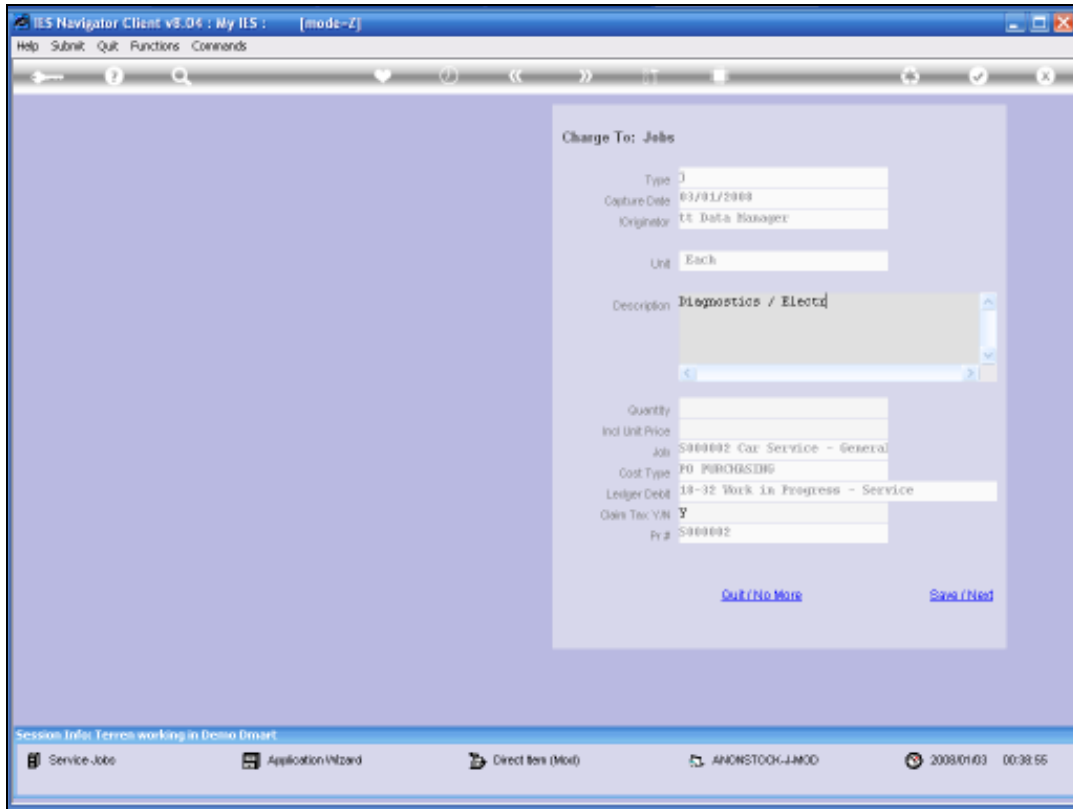




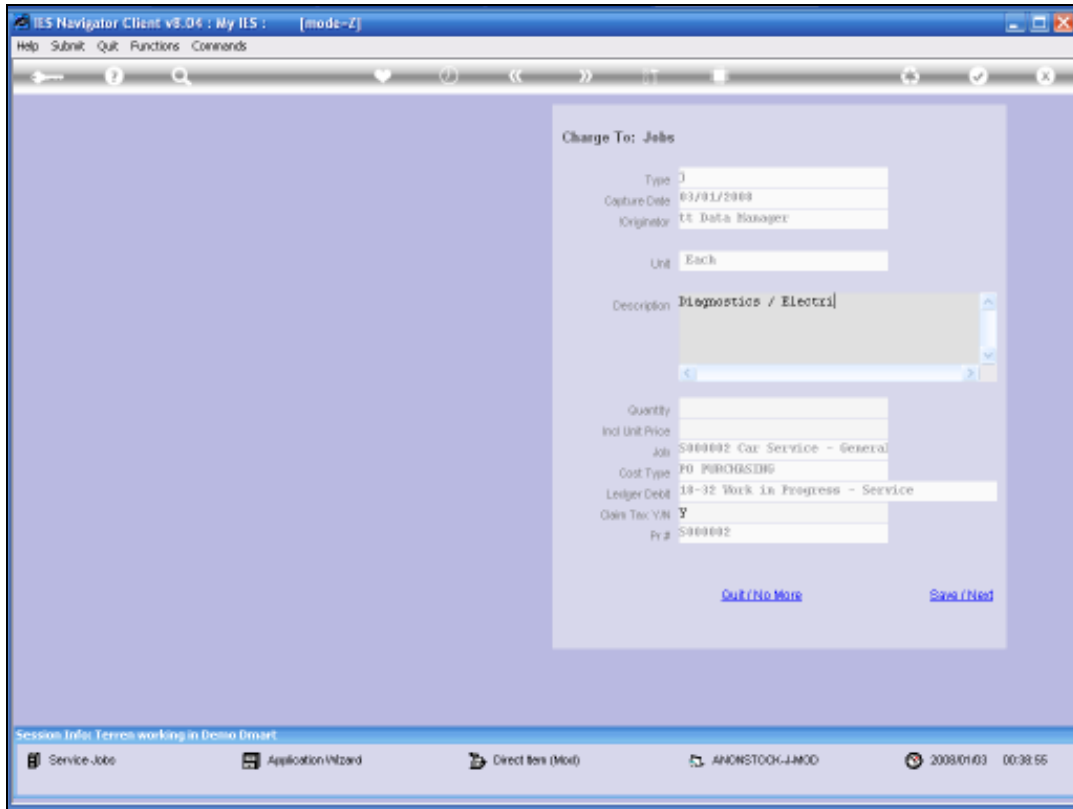
Slide 41  
Slide notes:



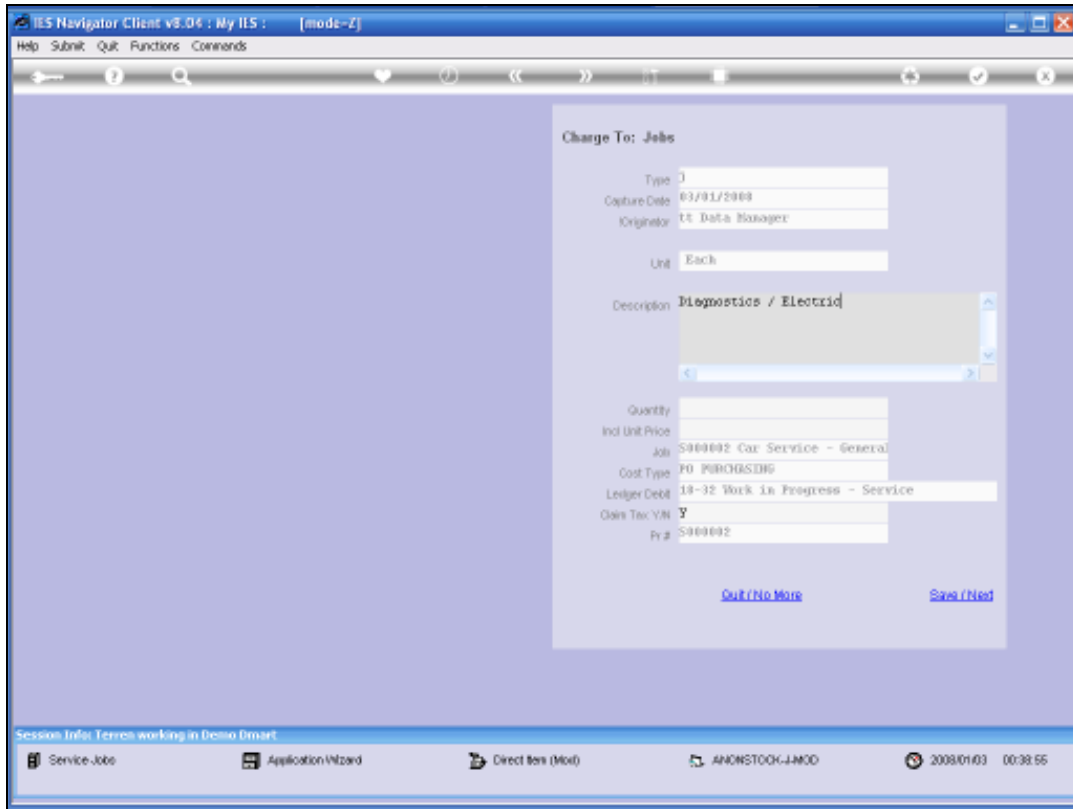
Slide 42  
Slide notes:



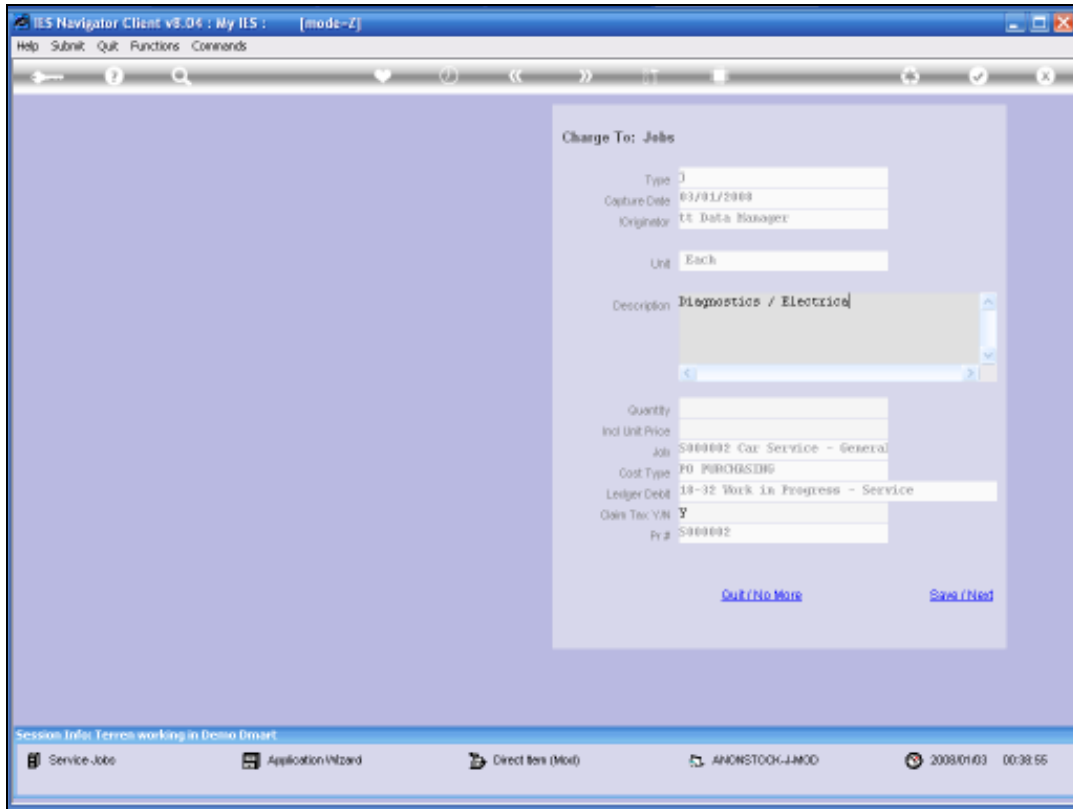
Slide 43  
Slide notes:



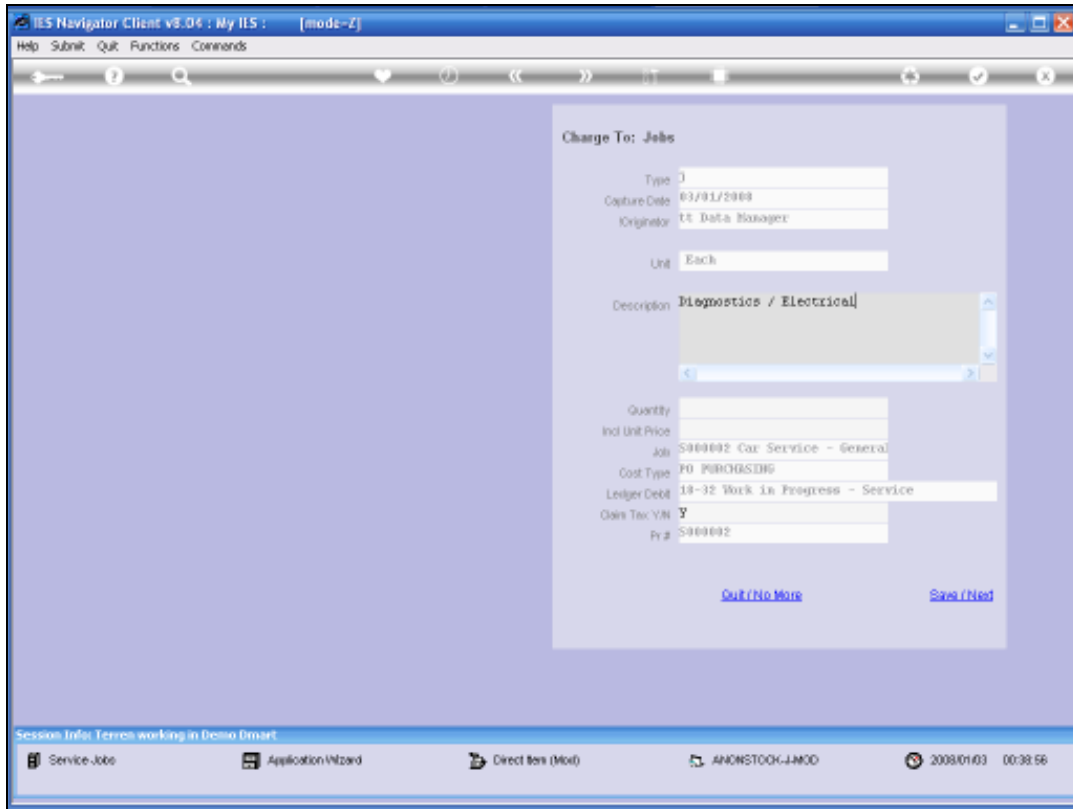
Slide 44  
Slide notes:



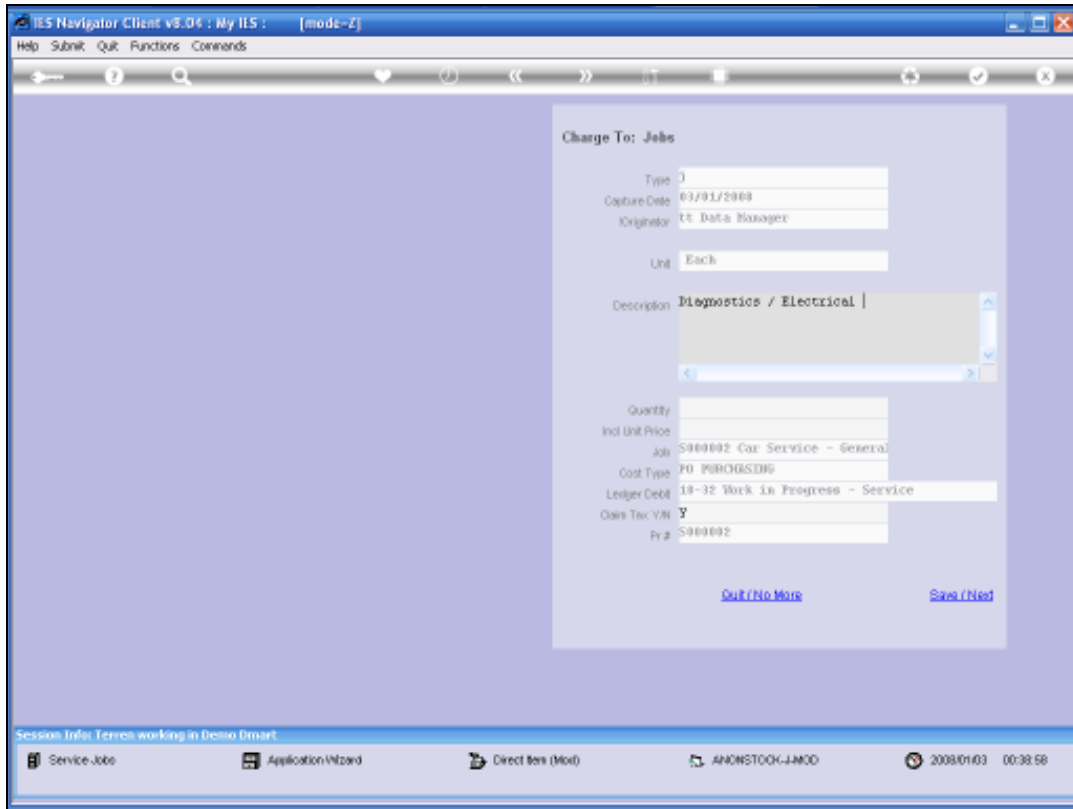
Slide 45  
Slide notes:



Slide 46  
Slide notes:

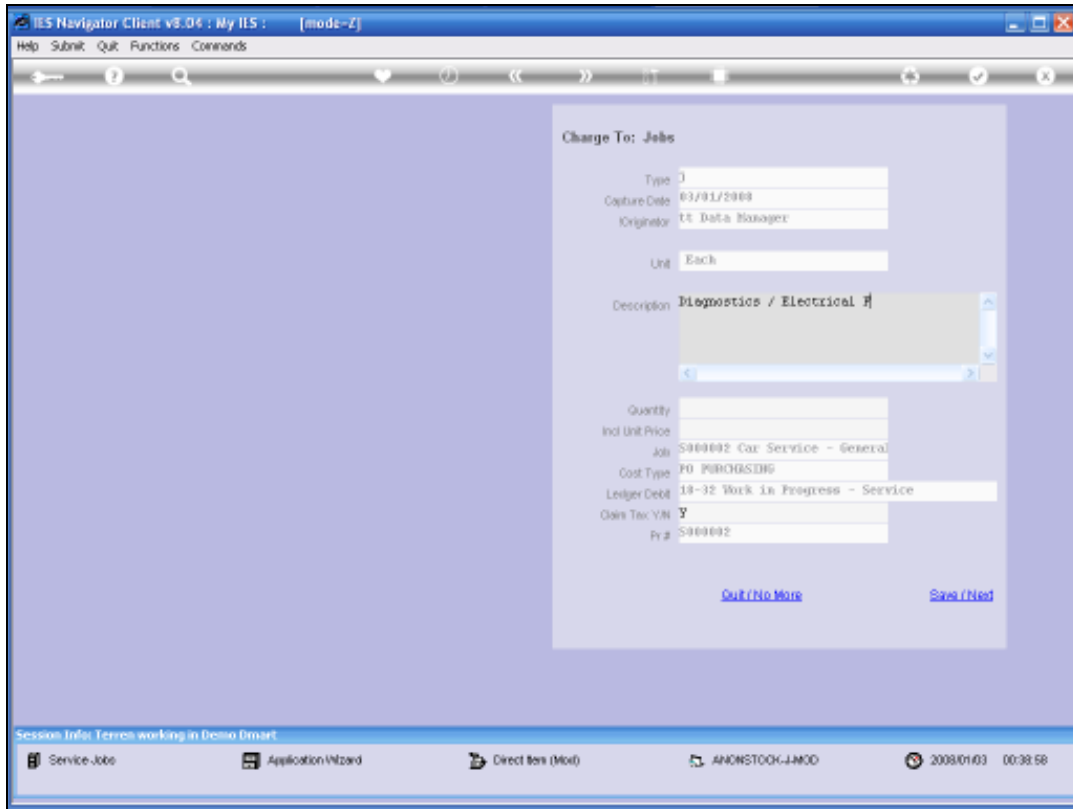


Slide 47  
Slide notes:

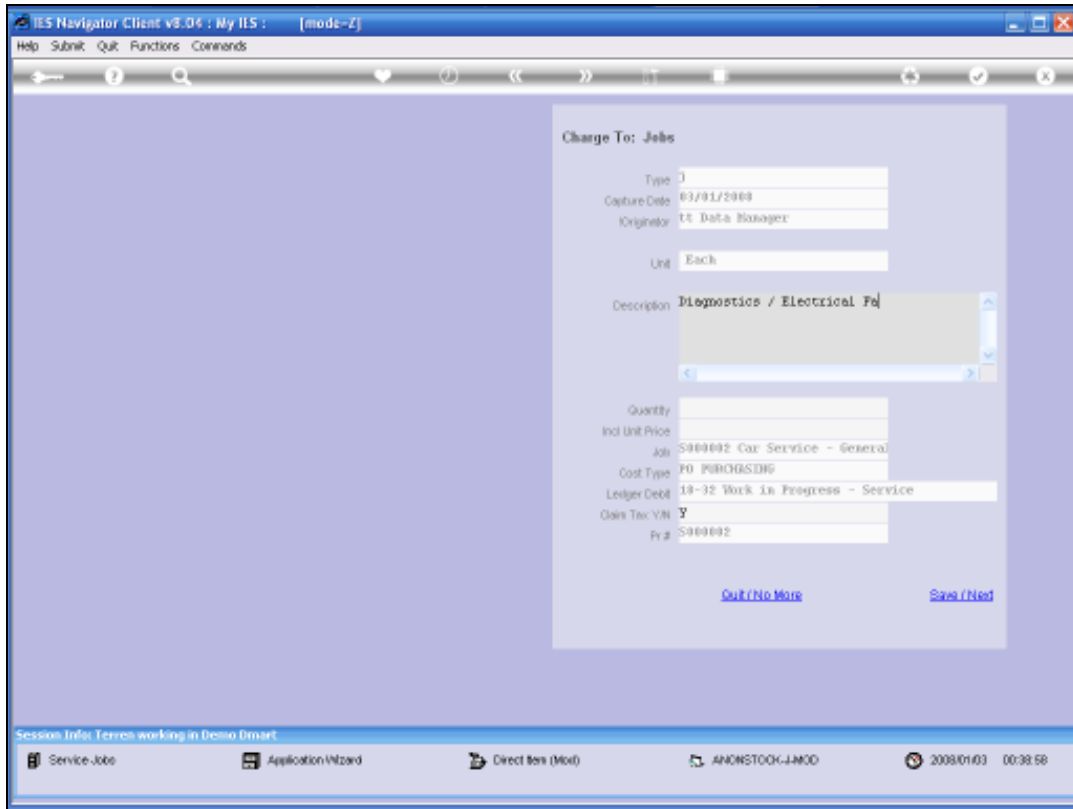


Slide 48  
Slide notes:

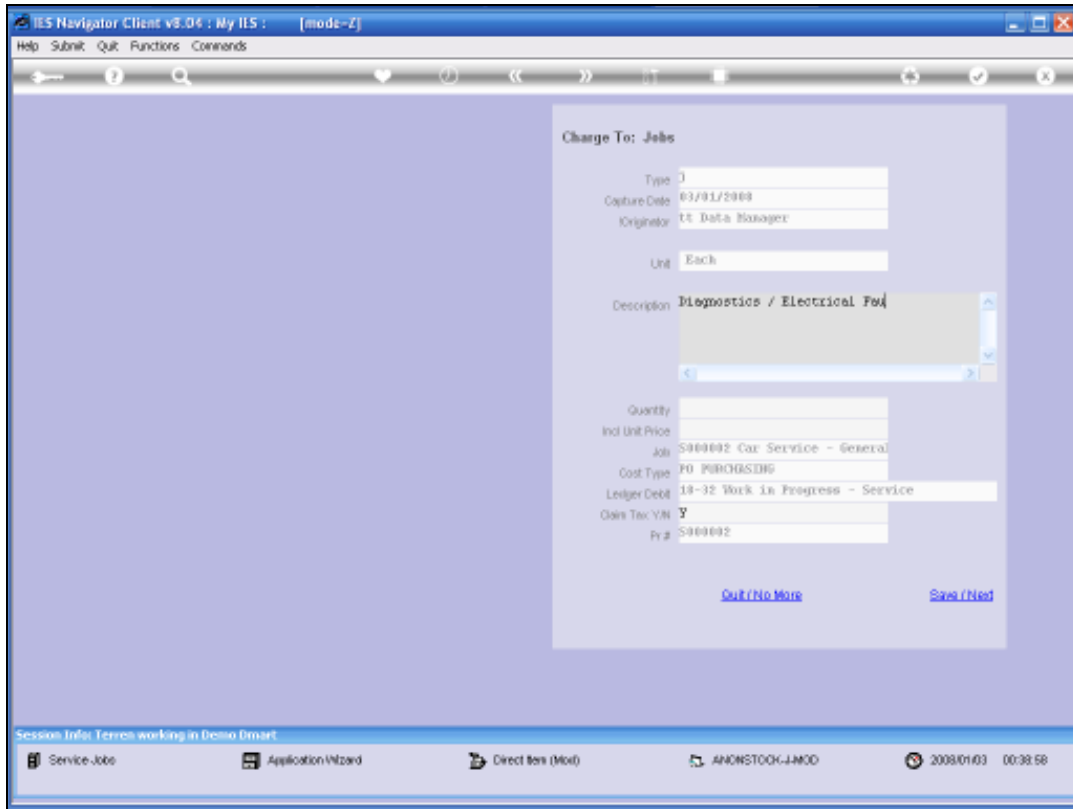




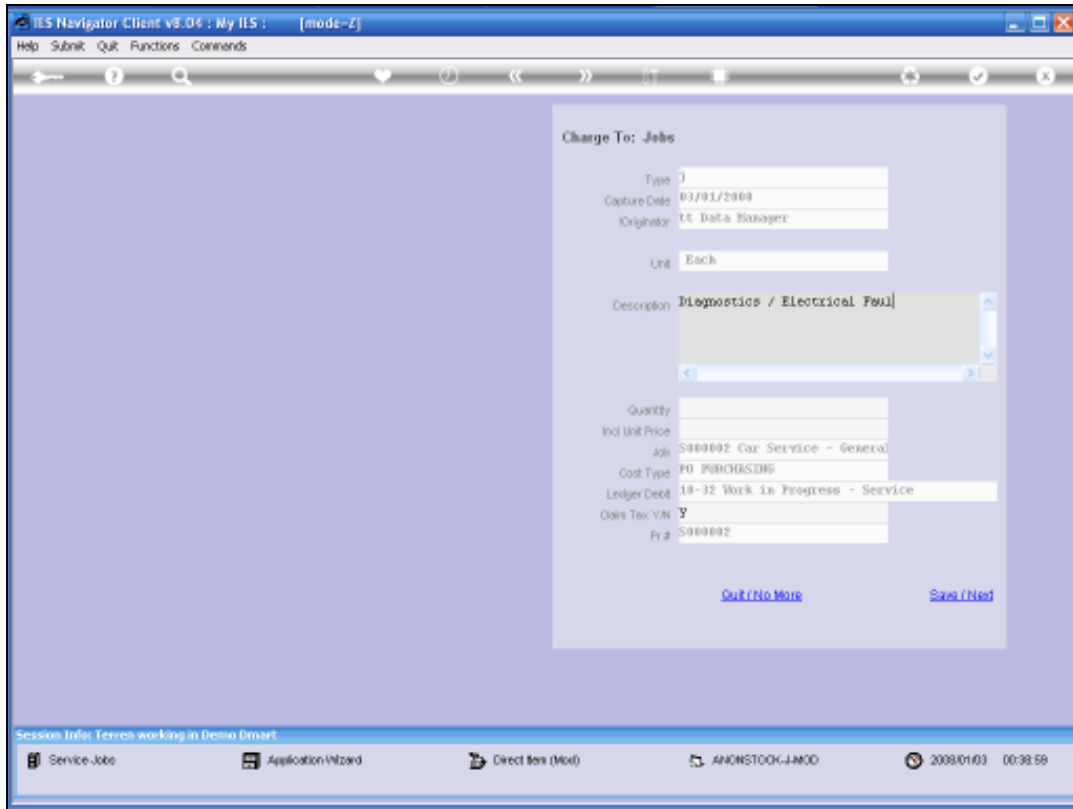
Slide 49  
Slide notes:



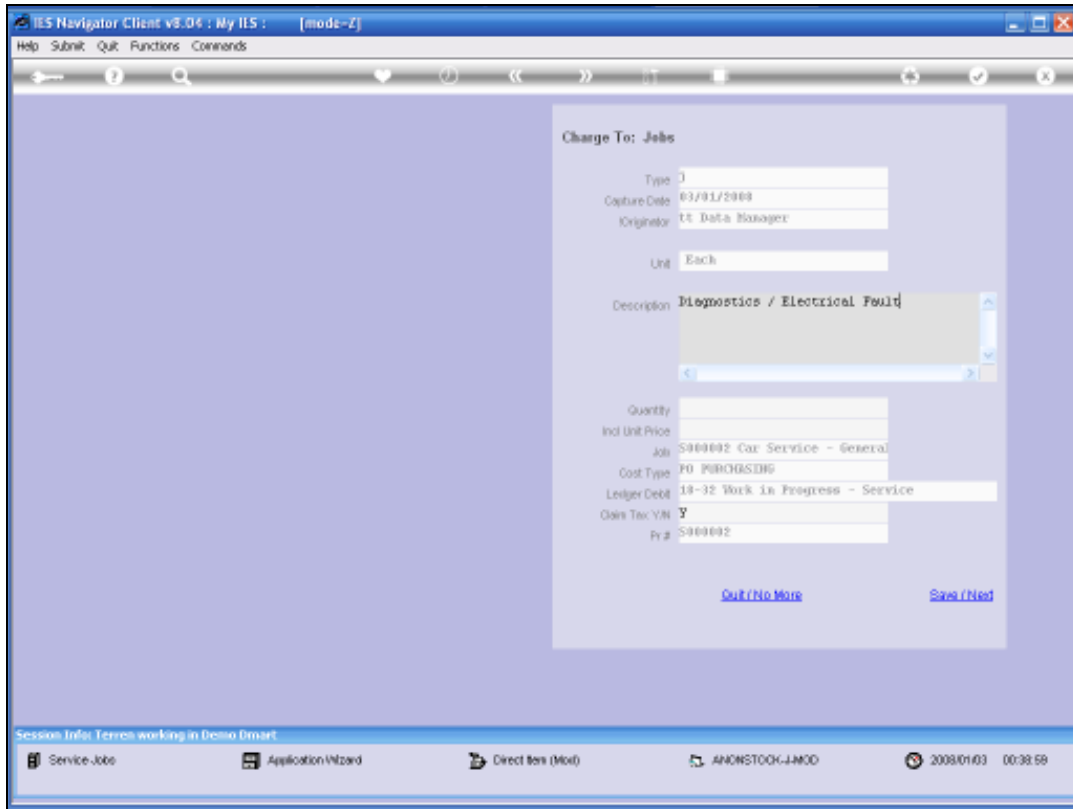
Slide 50  
Slide notes:



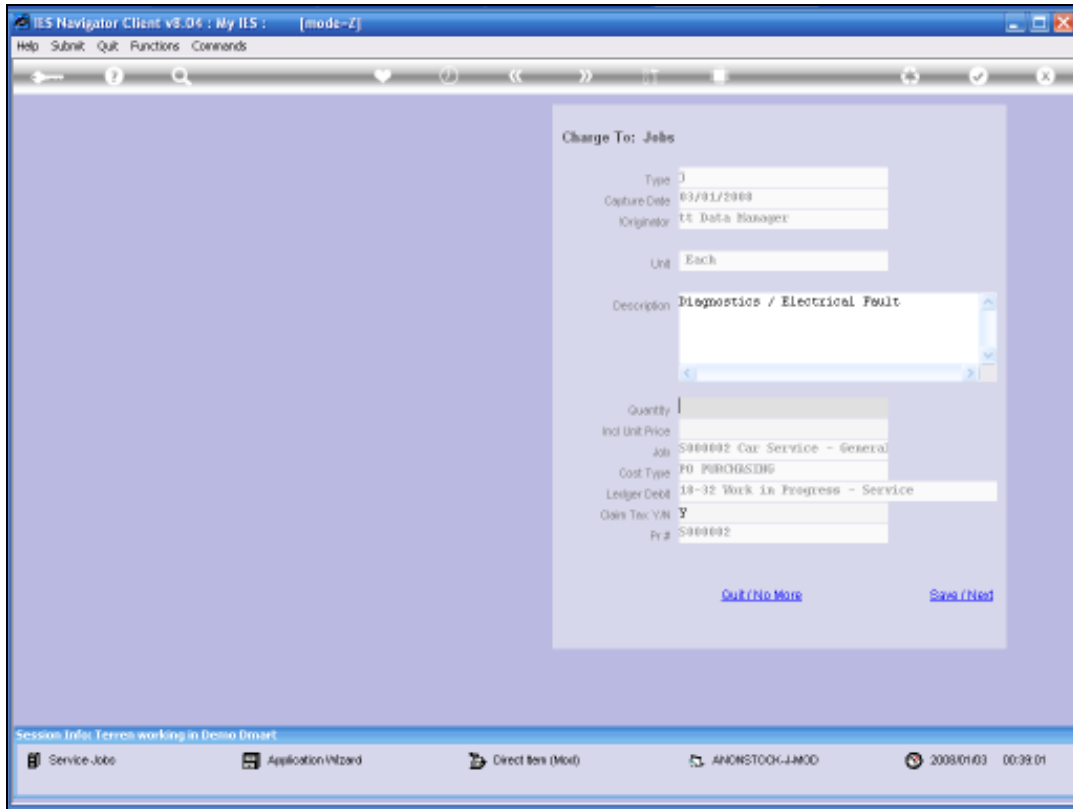
Slide 51  
Slide notes:



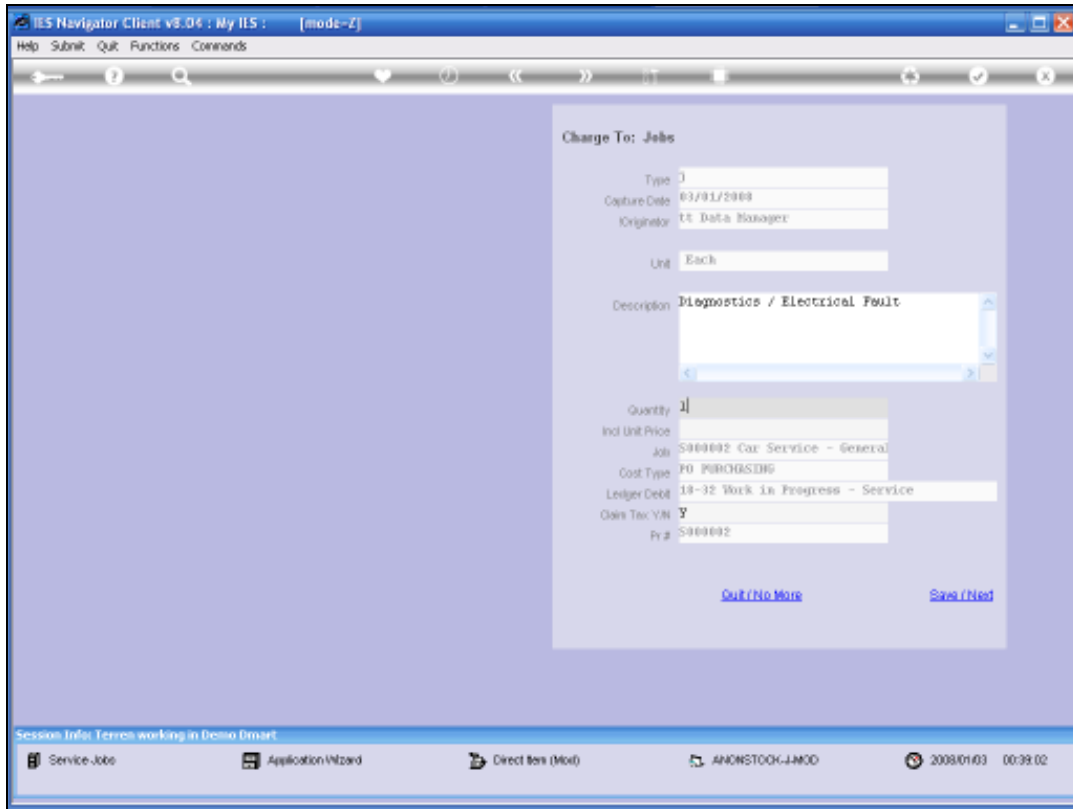
Slide 52  
Slide notes:



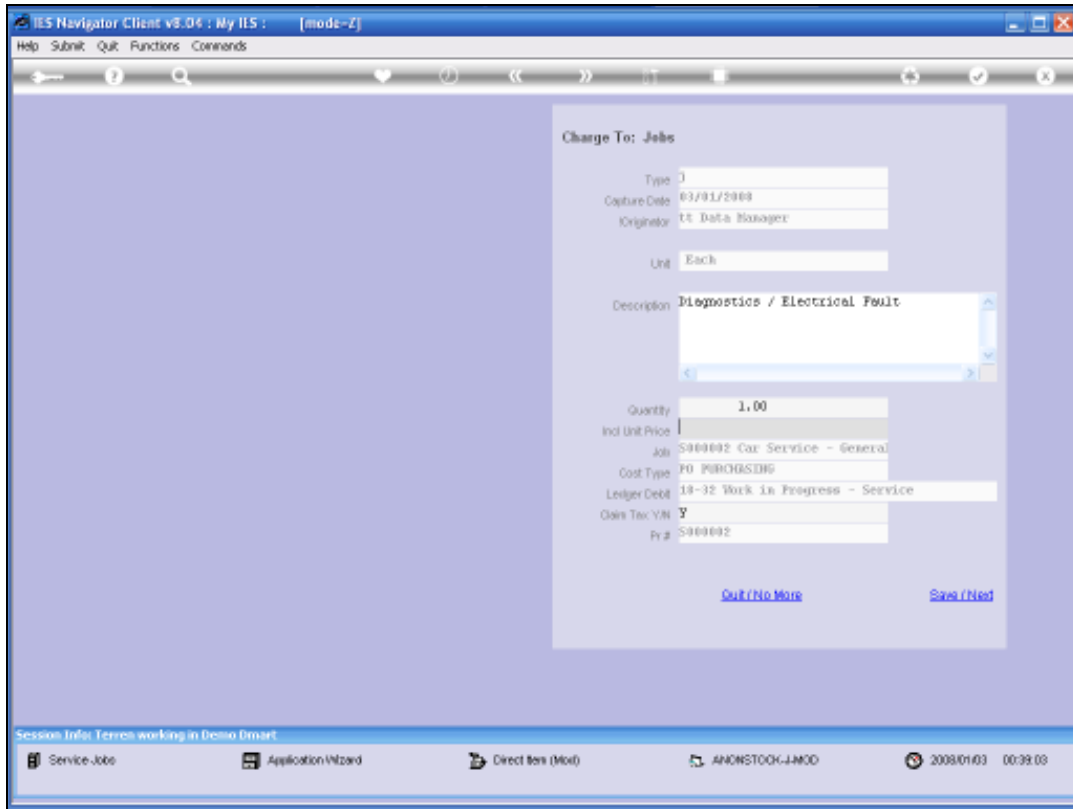
Slide 53  
Slide notes:



Slide 54  
Slide notes:

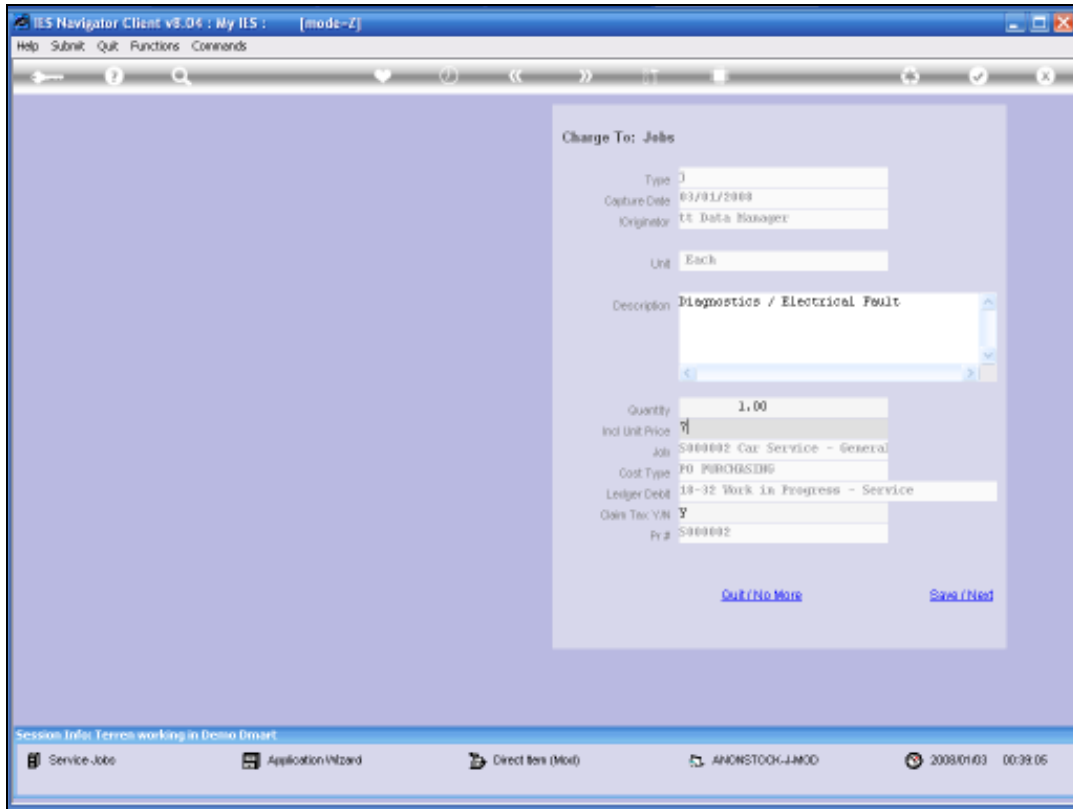


Slide 55  
Slide notes:

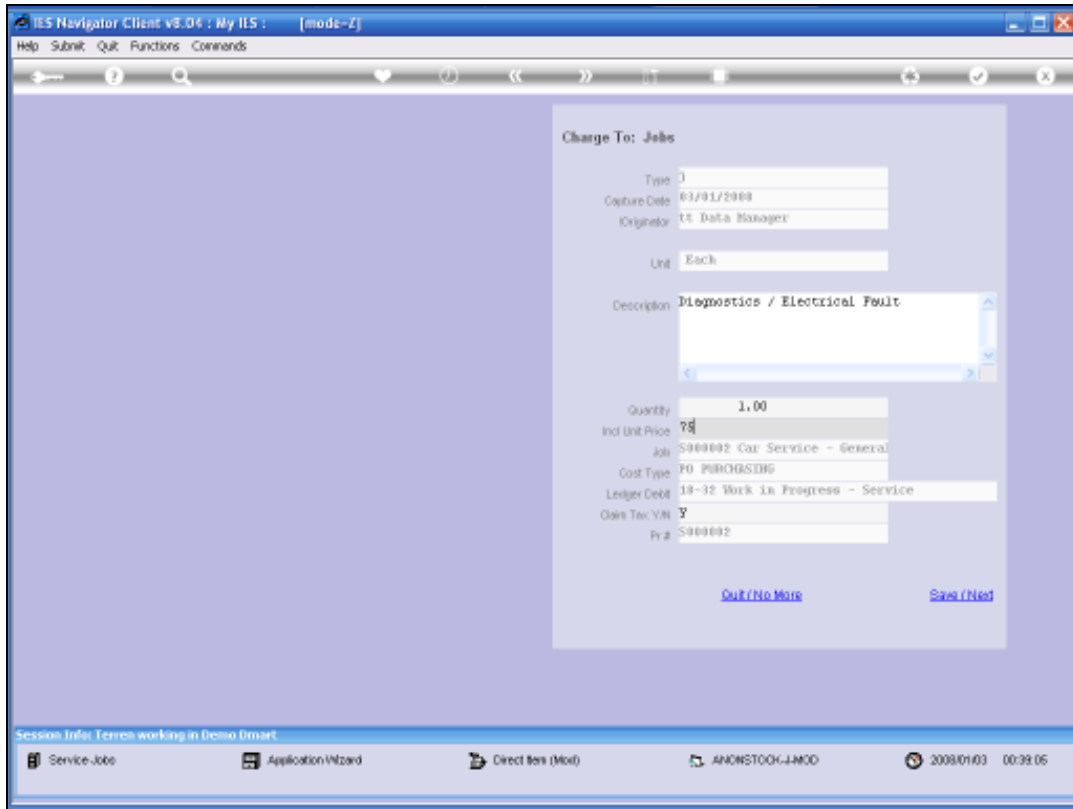


Slide 56  
Slide notes:

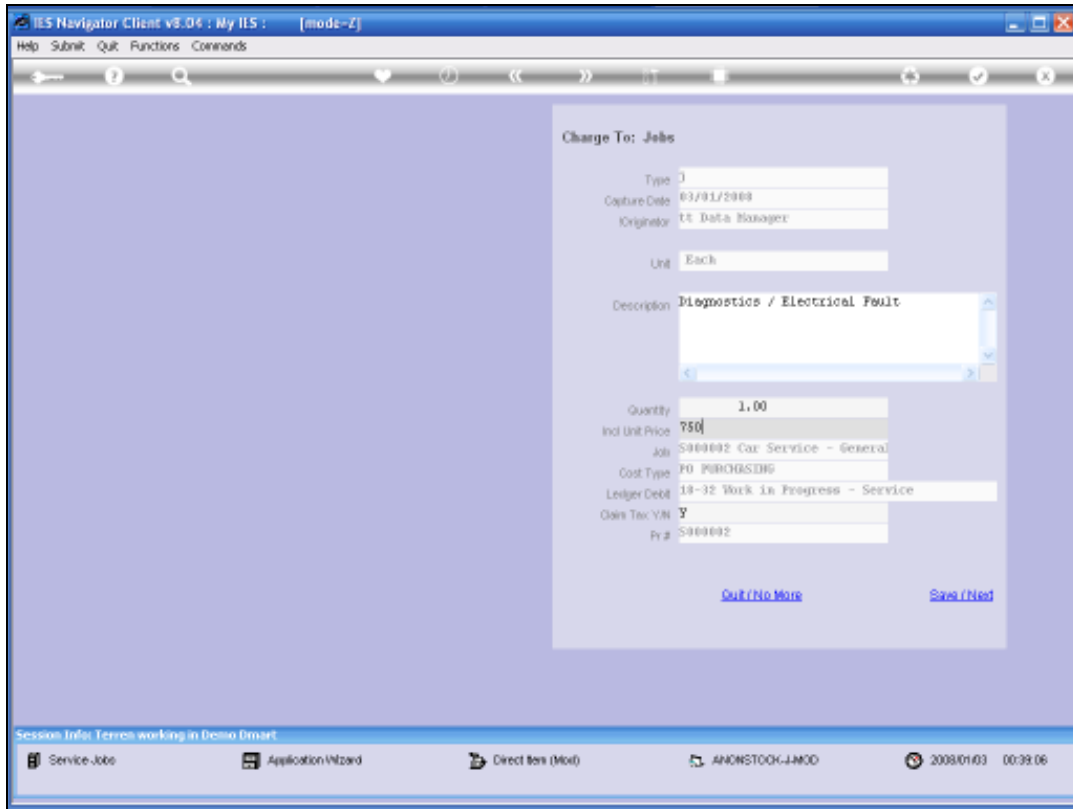




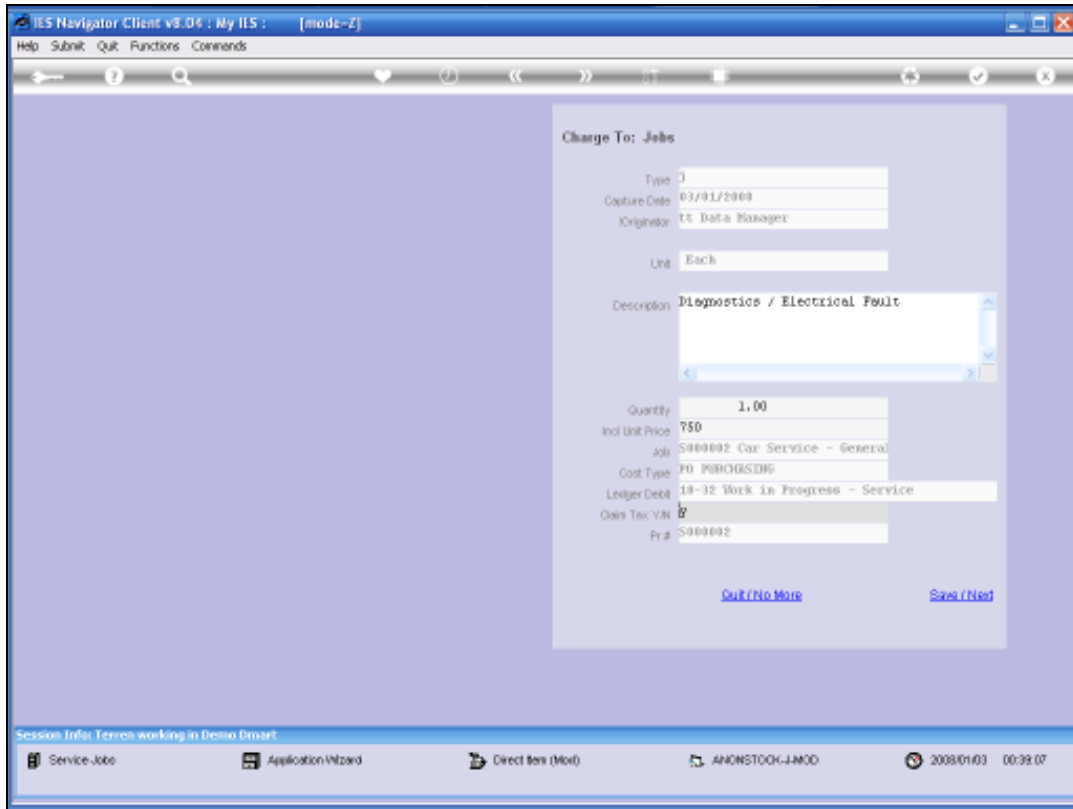
Slide 57  
Slide notes:



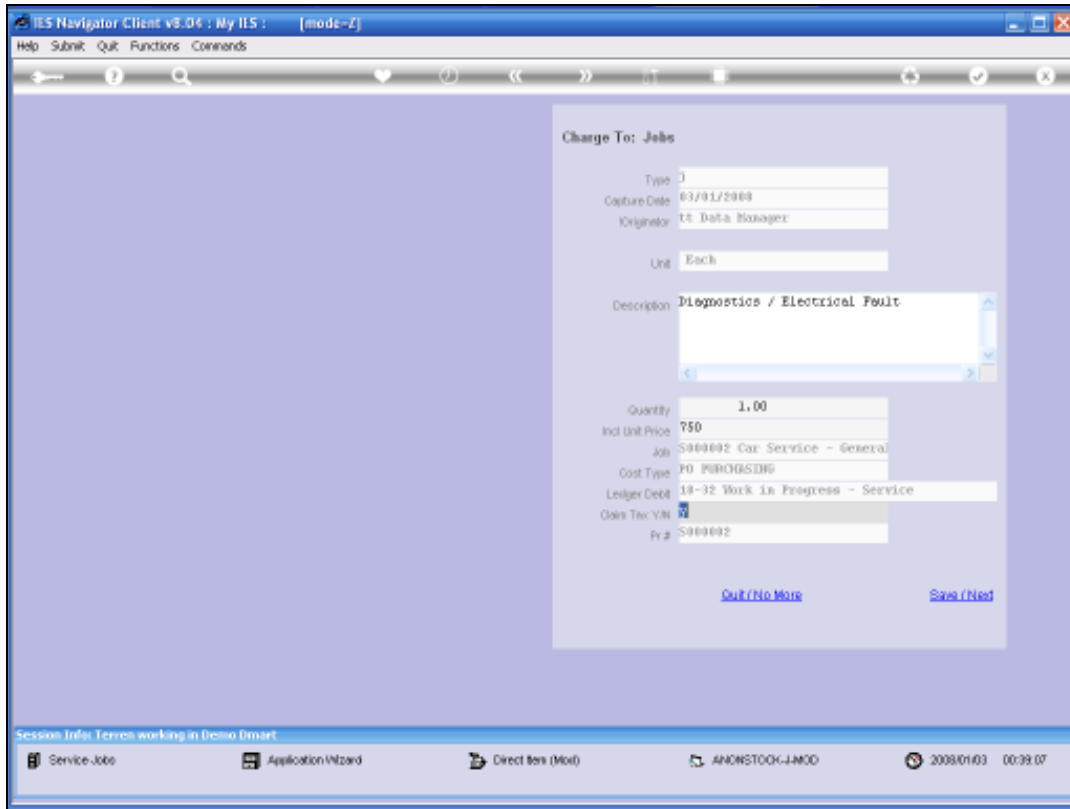
Slide 58  
Slide notes:



Slide 59  
Slide notes:



Slide 60  
Slide notes:



Slide 61  
Slide notes:

IES Navigator Client v8.04 : My IIS : [mode-Z]

Help Submit Quit Functions Commands

### New Purchase Requisition (Service Jobs)

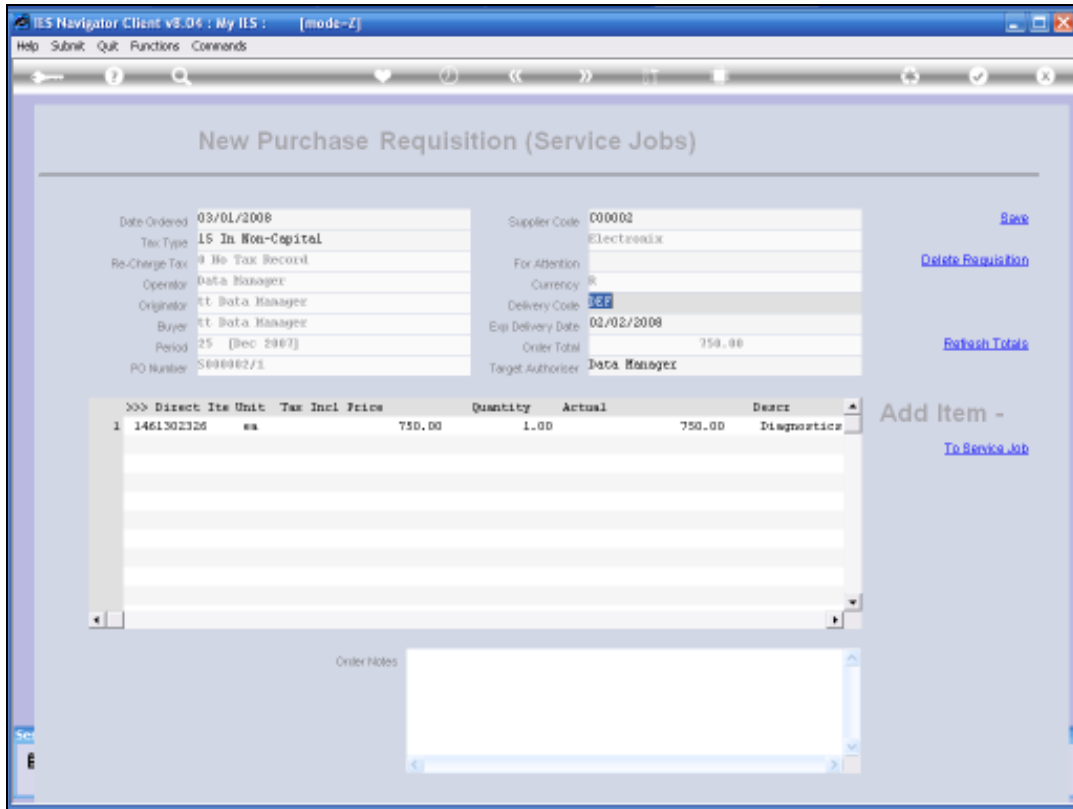
|               |                   |                   |              |                                    |
|---------------|-------------------|-------------------|--------------|------------------------------------|
| Date Ordered  | 03/01/2008        | Supplier Code     | 00002        | <a href="#">Back</a>               |
| Tax Type      | 15 In Non-Capital |                   | Electreadix  | <a href="#">Delete Requisition</a> |
| Re-Charge Tax | 0 No Tax Record   | For Attention     |              |                                    |
| Operator      | Data Manager      | Currency          | \$           |                                    |
| Originator    | IT Data Manager   | Delivery Code     | DEF Default  | <a href="#">Refresh Totals</a>     |
| Buyer         | IT Data Manager   | Exp Delivery Date | 03/02/2008   |                                    |
| Period        | 25 (Dec 2007)     | Order Total       | 750.00       |                                    |
| PO Number     | S000002/1         | Target Authorizer | Data Manager |                                    |

| >>> | Disect     | Qty | Unit | Tax Incl | Price  | Quantity | Actual | Descr      |
|-----|------------|-----|------|----------|--------|----------|--------|------------|
| 1   | 1461302326 | ea  |      |          | 750.00 | 1.00     | 750.00 | Diagnostic |
|     |            |     |      |          |        |          |        |            |
|     |            |     |      |          |        |          |        |            |
|     |            |     |      |          |        |          |        |            |
|     |            |     |      |          |        |          |        |            |
|     |            |     |      |          |        |          |        |            |

Order Notes

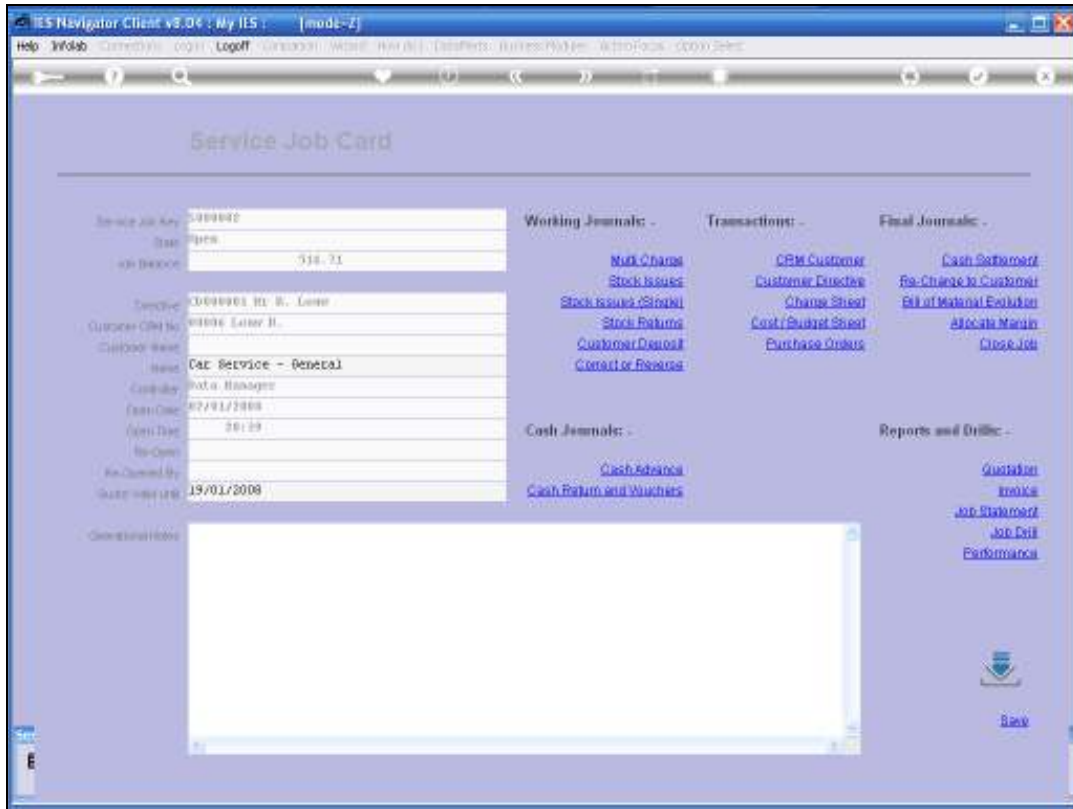
[Add Item - To Service Job](#)

Slide 62  
Slide notes:



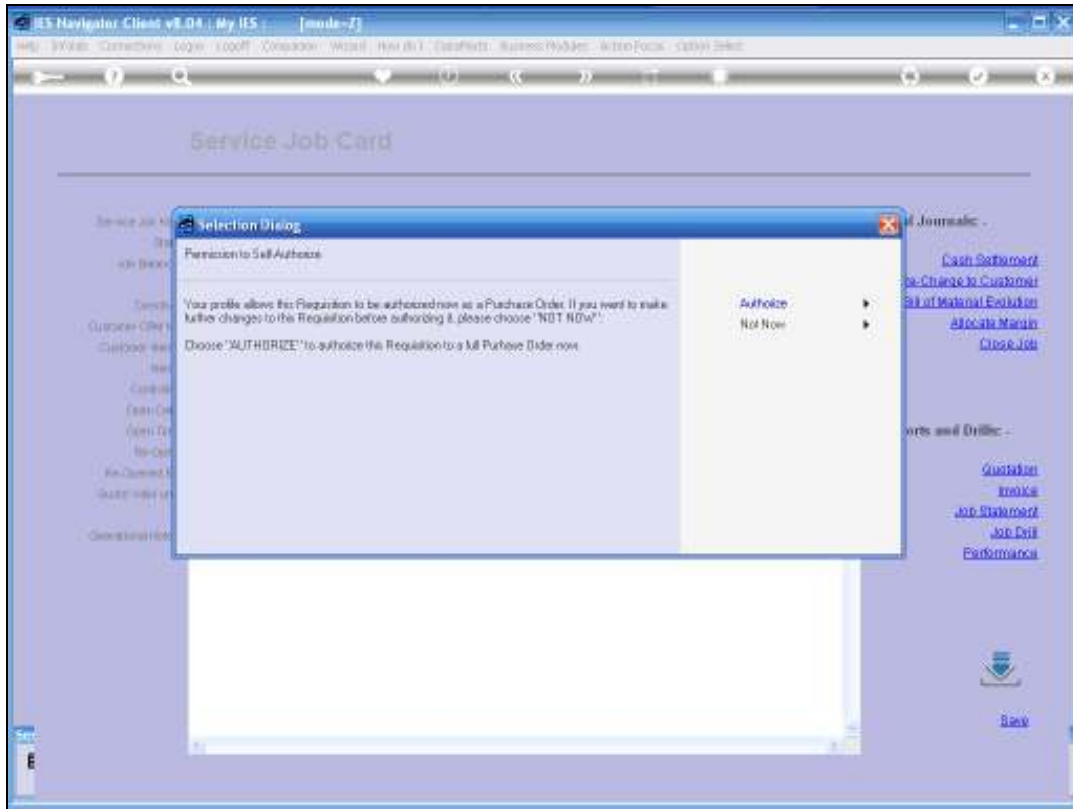
Slide 63  
Slide notes:

We can of course add any number of Purchase Orders to this Service Job, but in this example we have only one line Item and we are ready to "Save" this Purchase Requisition.



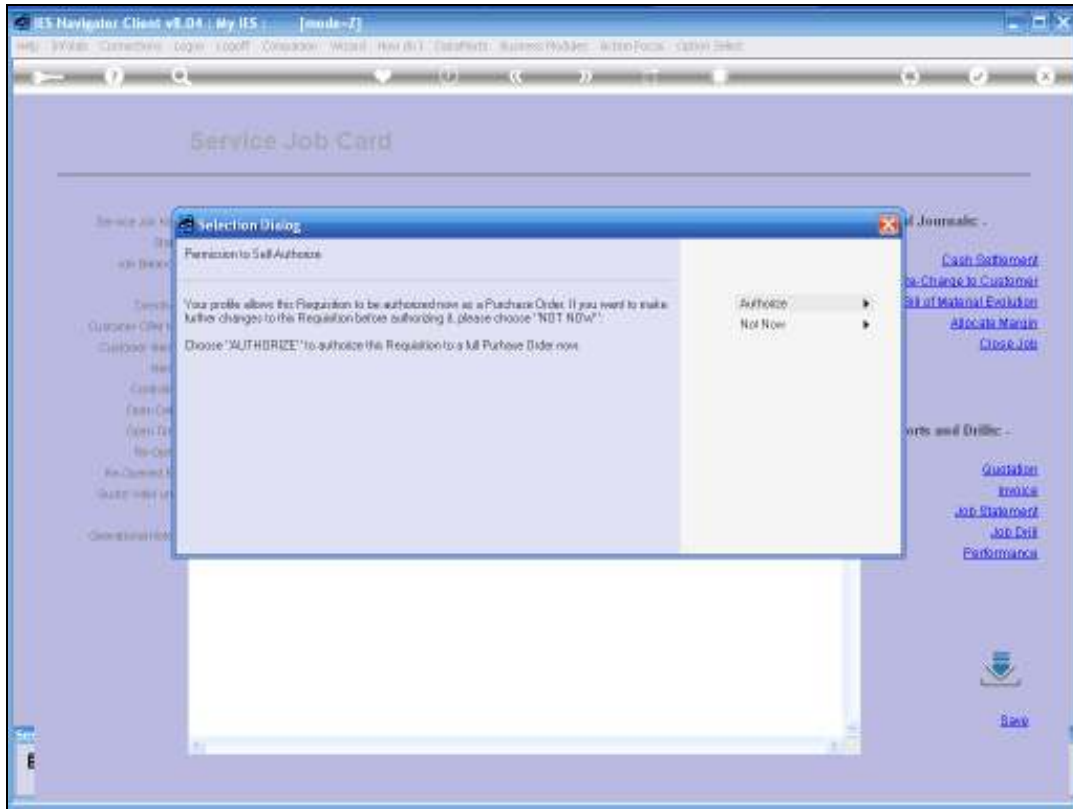
Slide 64  
Slide notes:



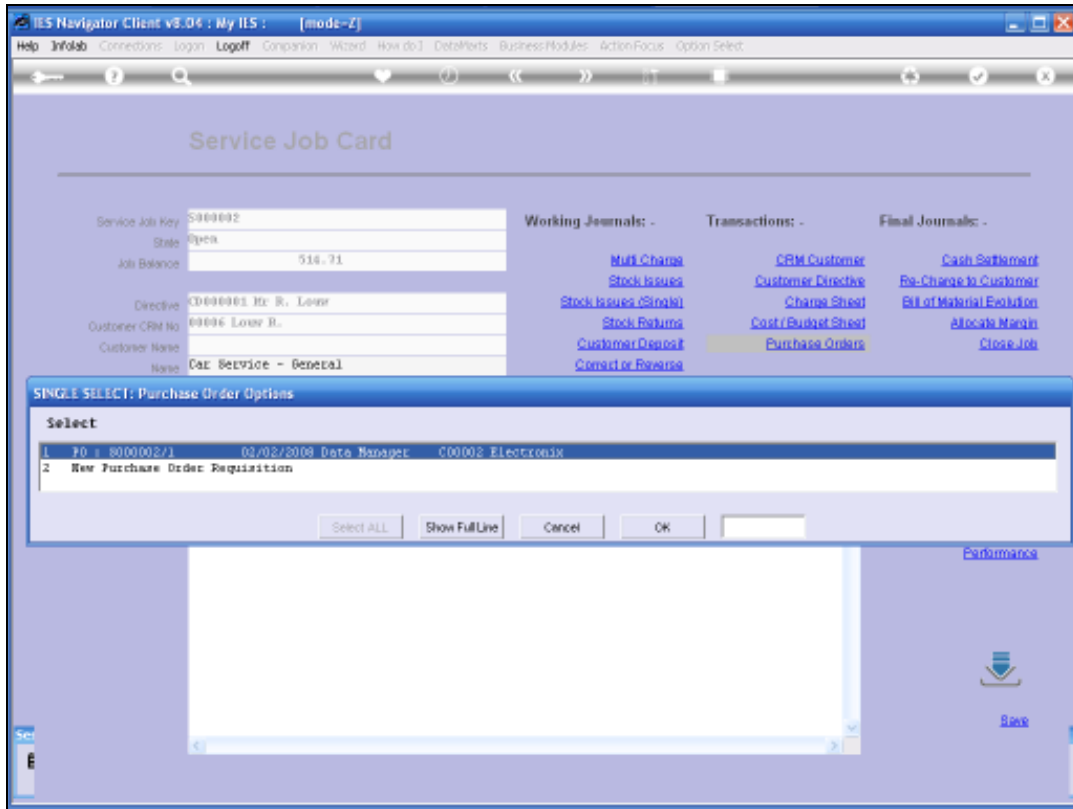


Slide 65  
Slide notes:

In this case my Profile allows me to automatically and immediately authorize this Purchase Order. If not, it will then go into the queue for authorizations.

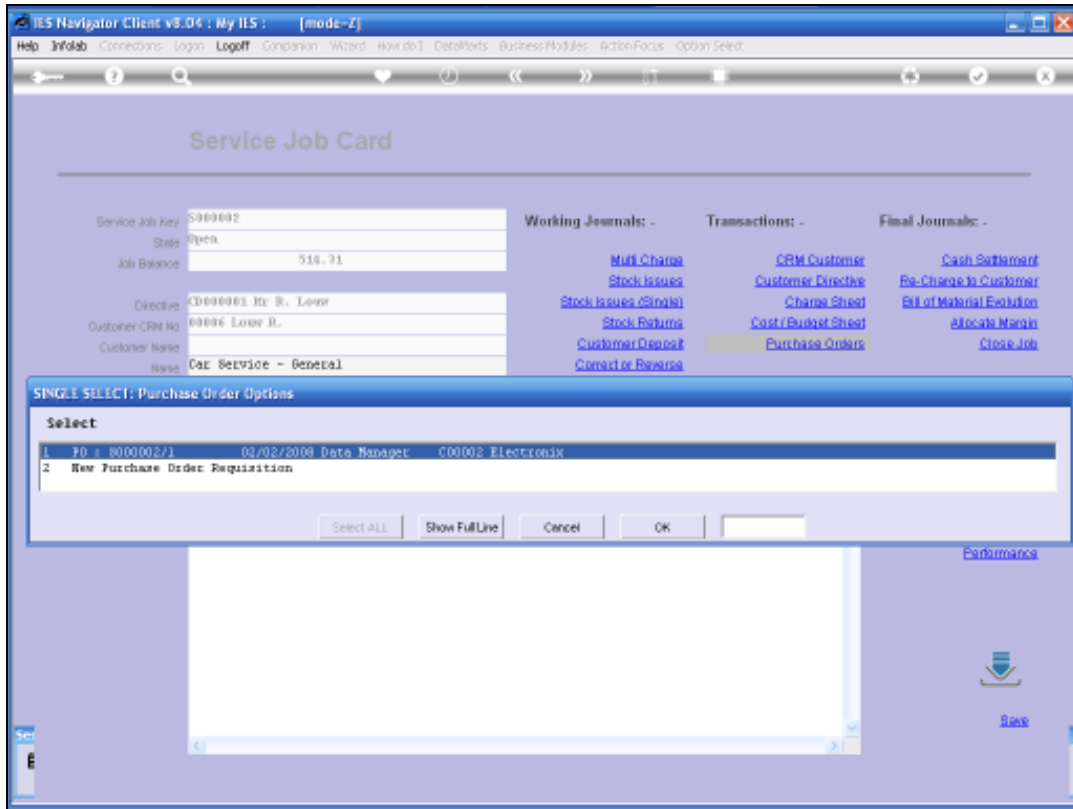


Slide 66  
Slide notes:

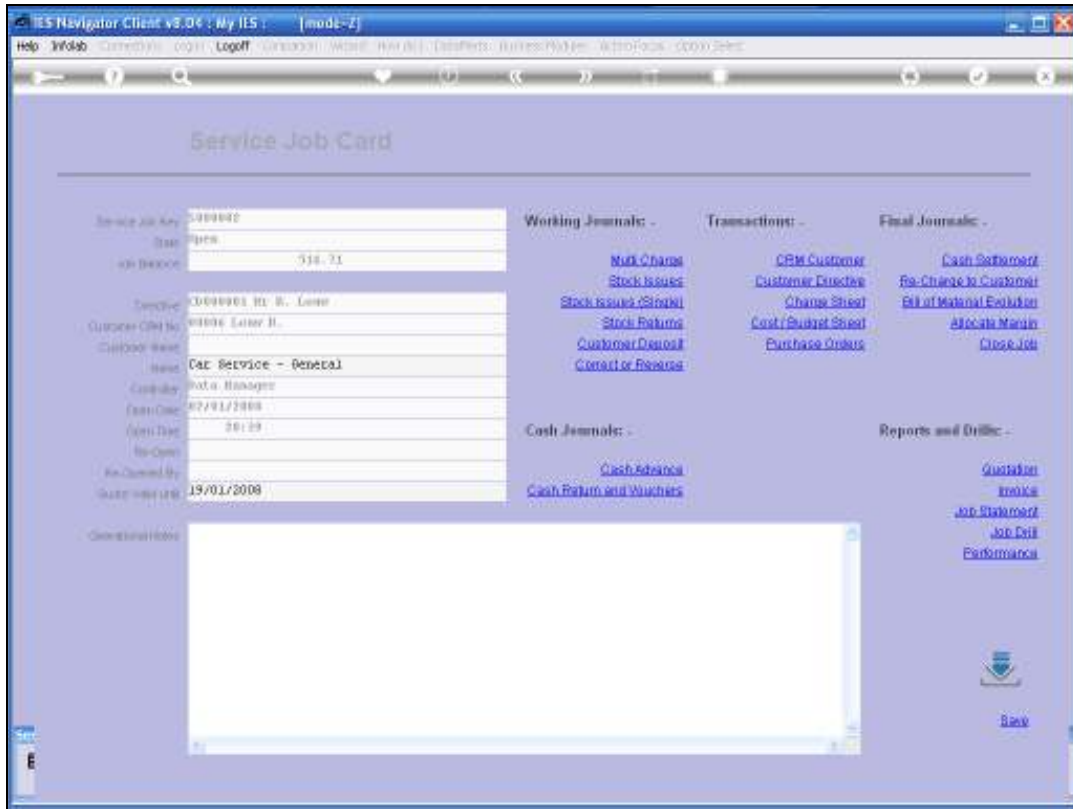


Slide 67  
Slide notes:

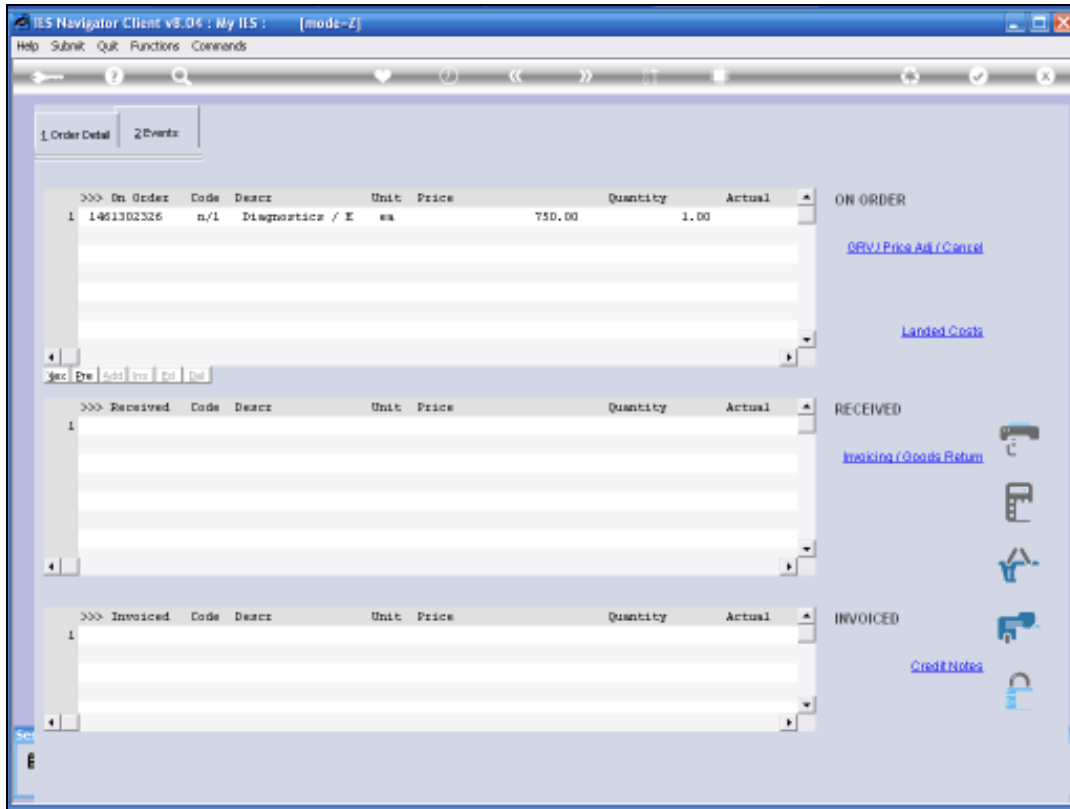
Now, when we use the Purchase Order Function again, the Order is present.



Slide 68  
Slide notes:

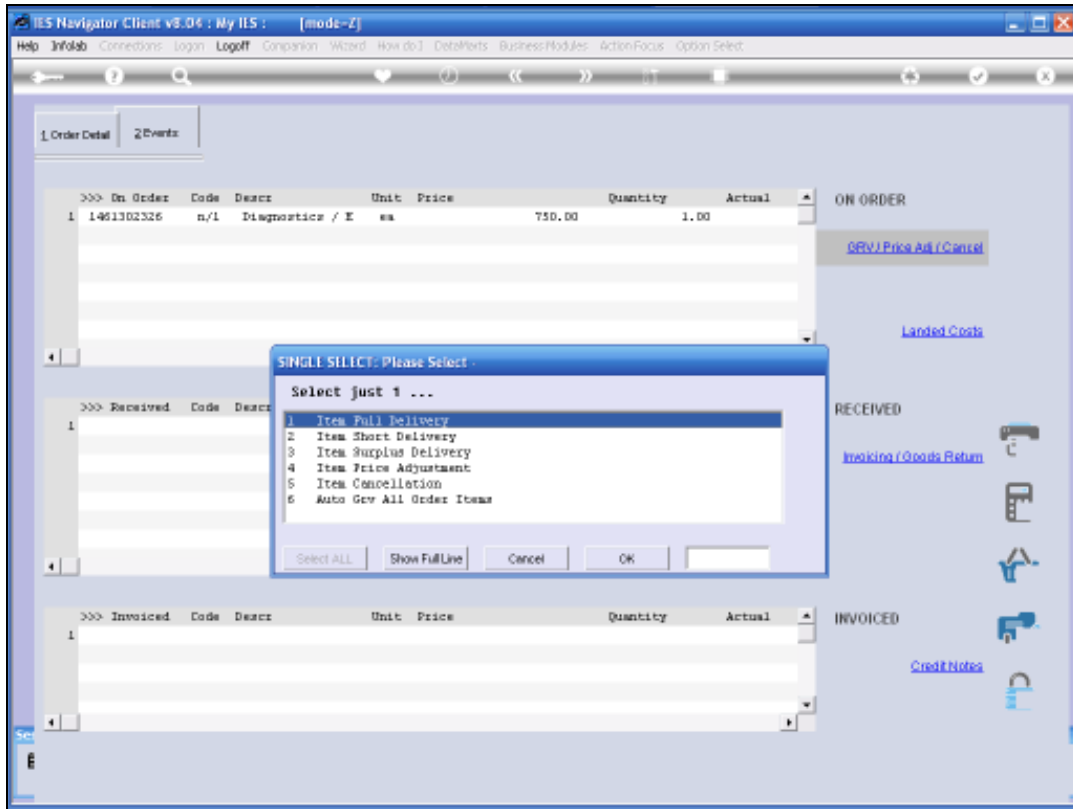


Slide 69  
Slide notes:

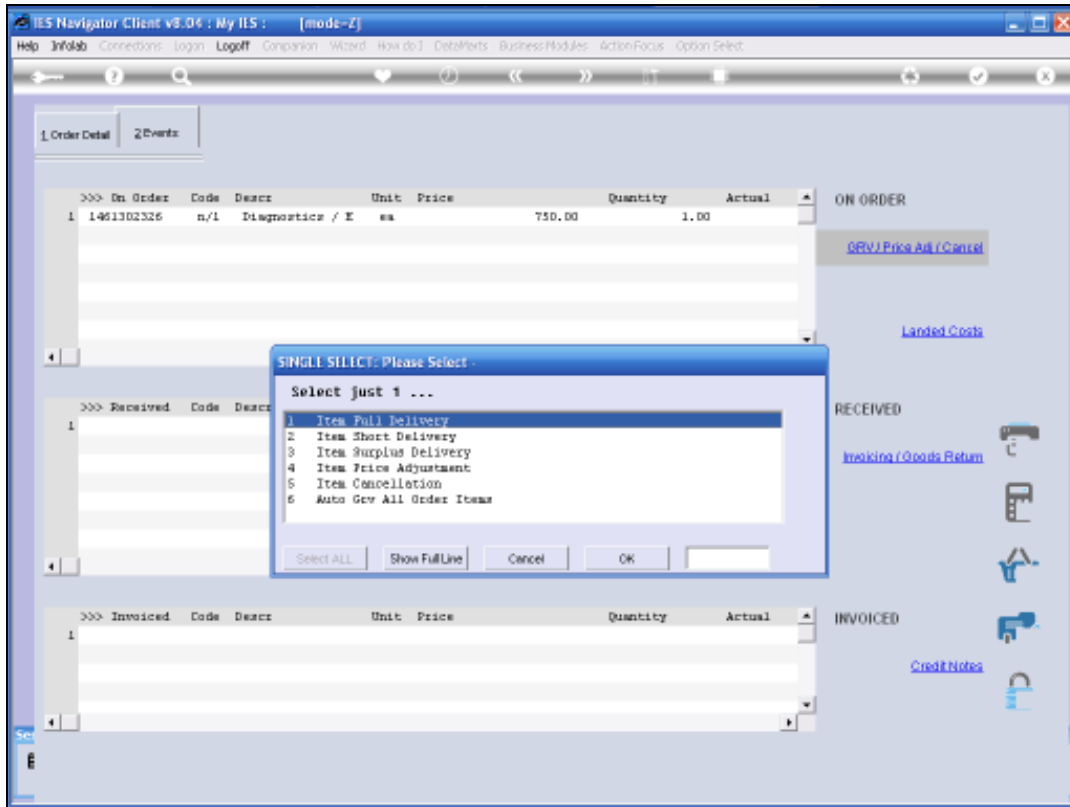


Slide 70  
 Slide notes:

We can now transact this Purchase Order as we would any other Purchase Order. The only difference being that this Purchase Order is directly integrated to the Service Job and anything ordered on this order is charged directly to the Service Job.

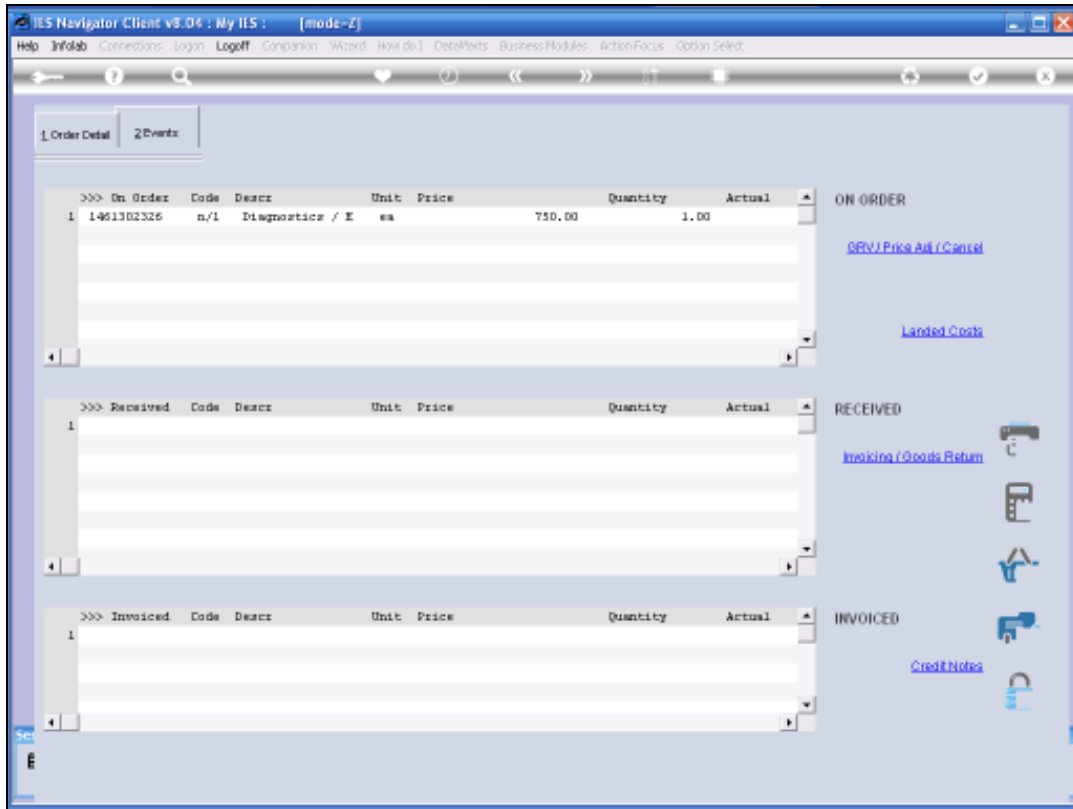


Slide 71  
Slide notes:

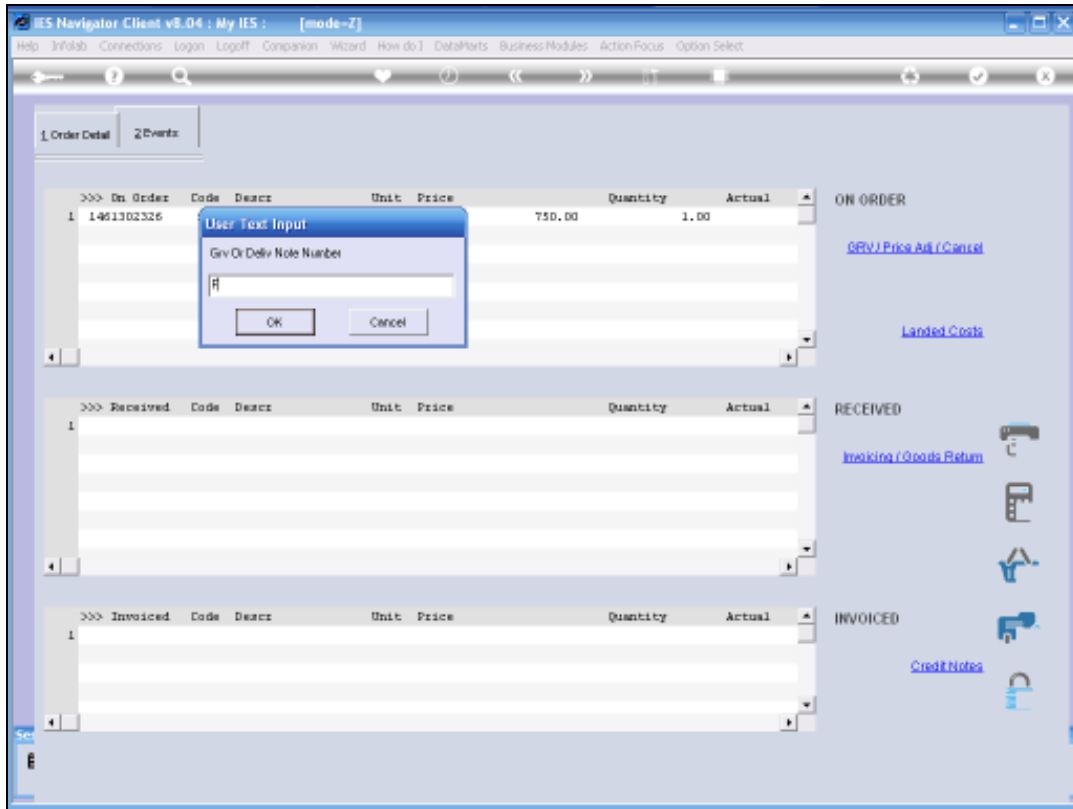


Slide 72  
Slide notes:

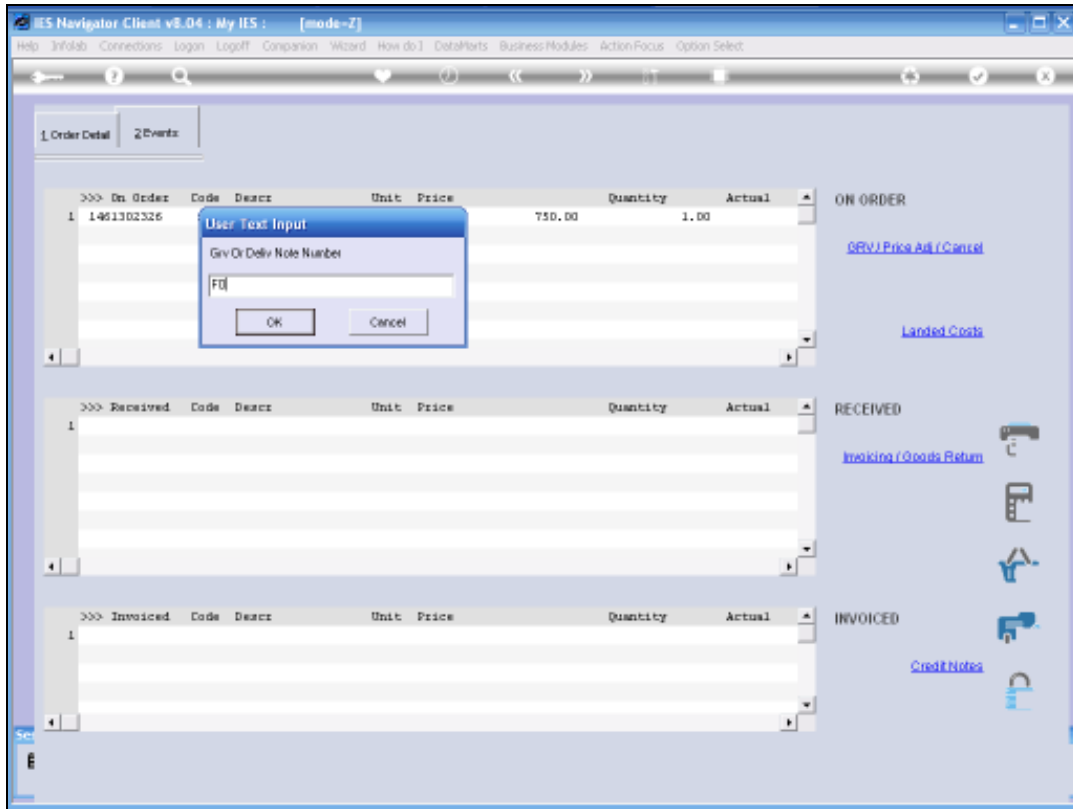




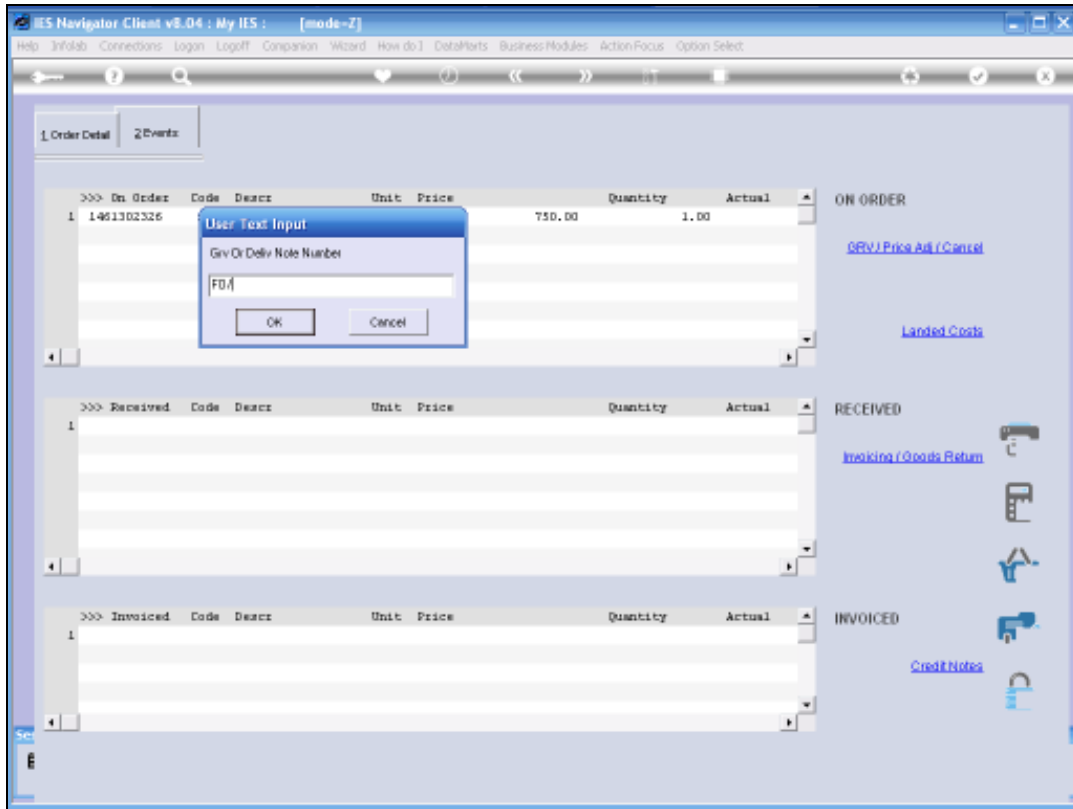
Slide 73  
Slide notes:



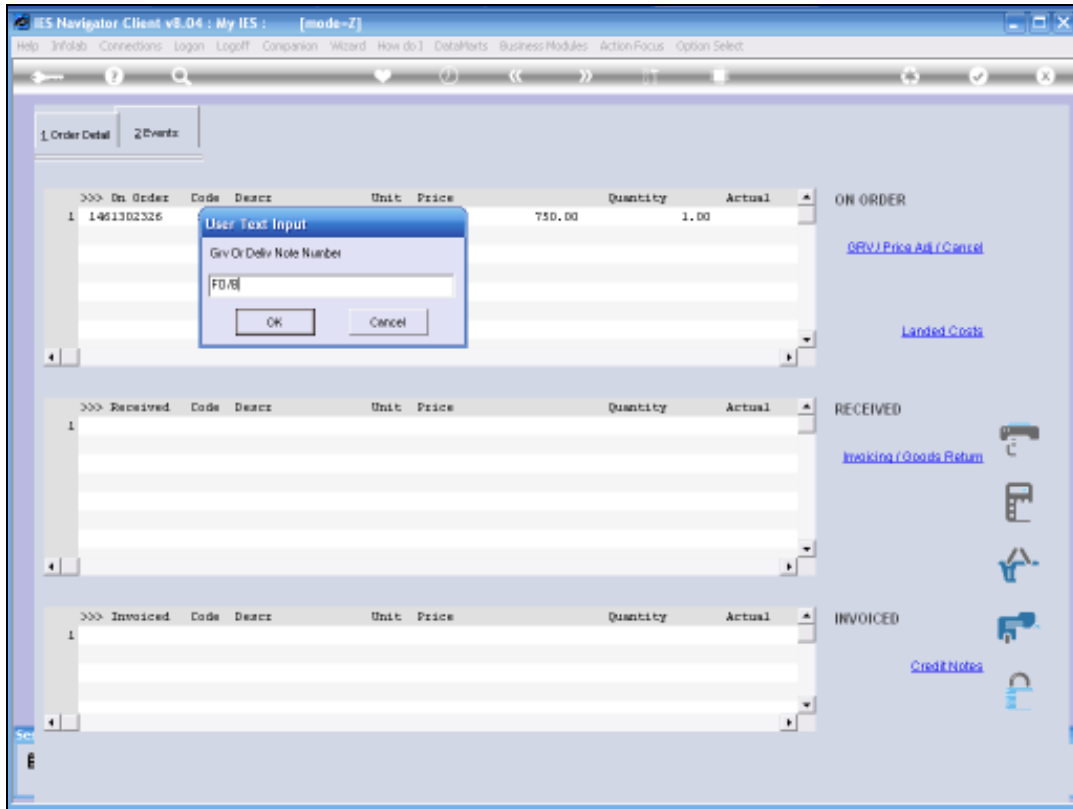
Slide 74  
Slide notes:



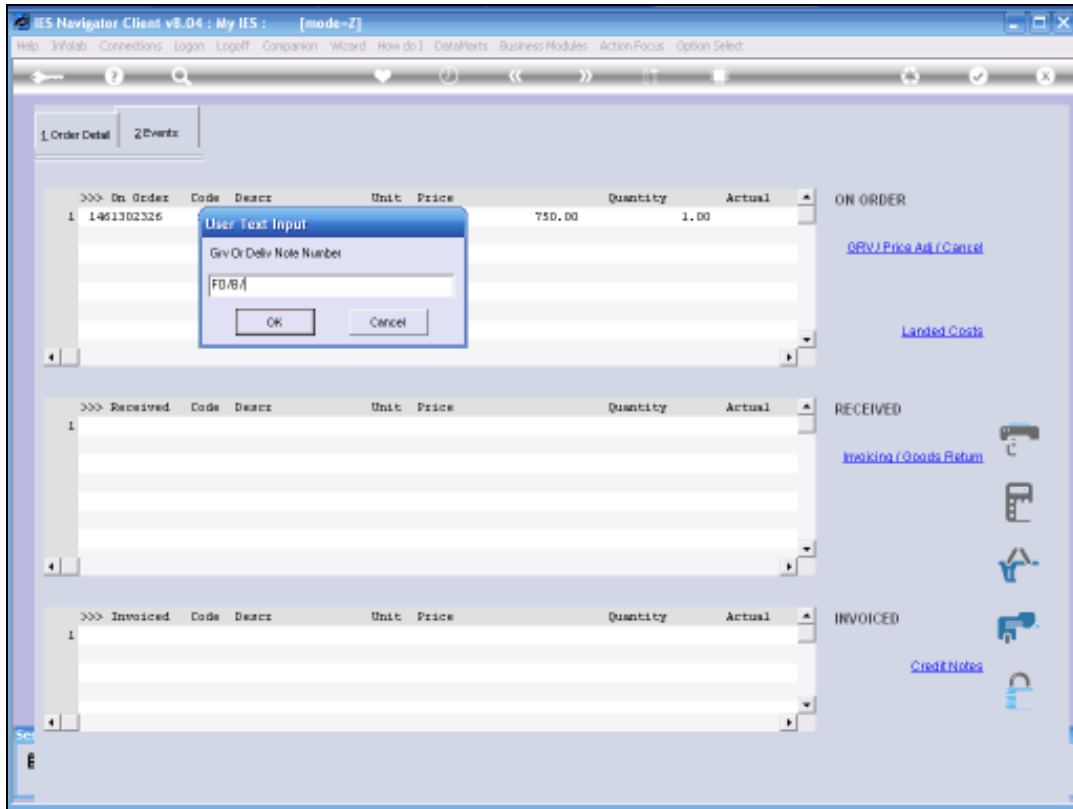
Slide 75  
Slide notes:



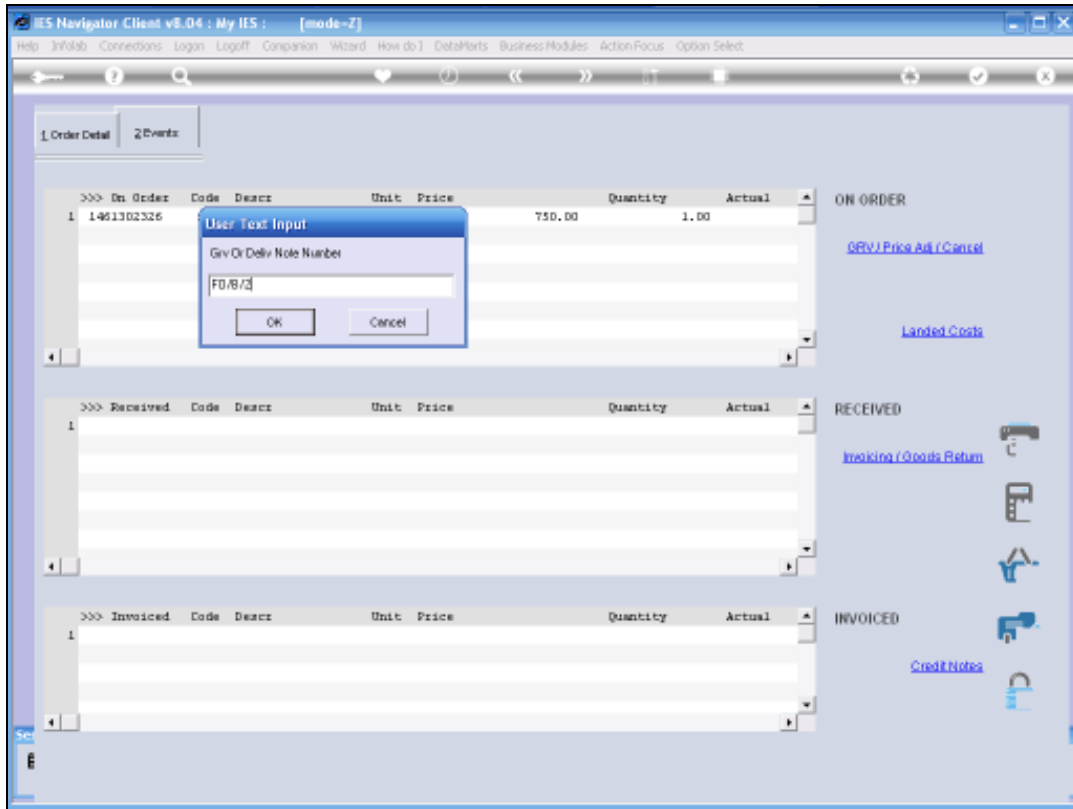
Slide 76  
Slide notes:



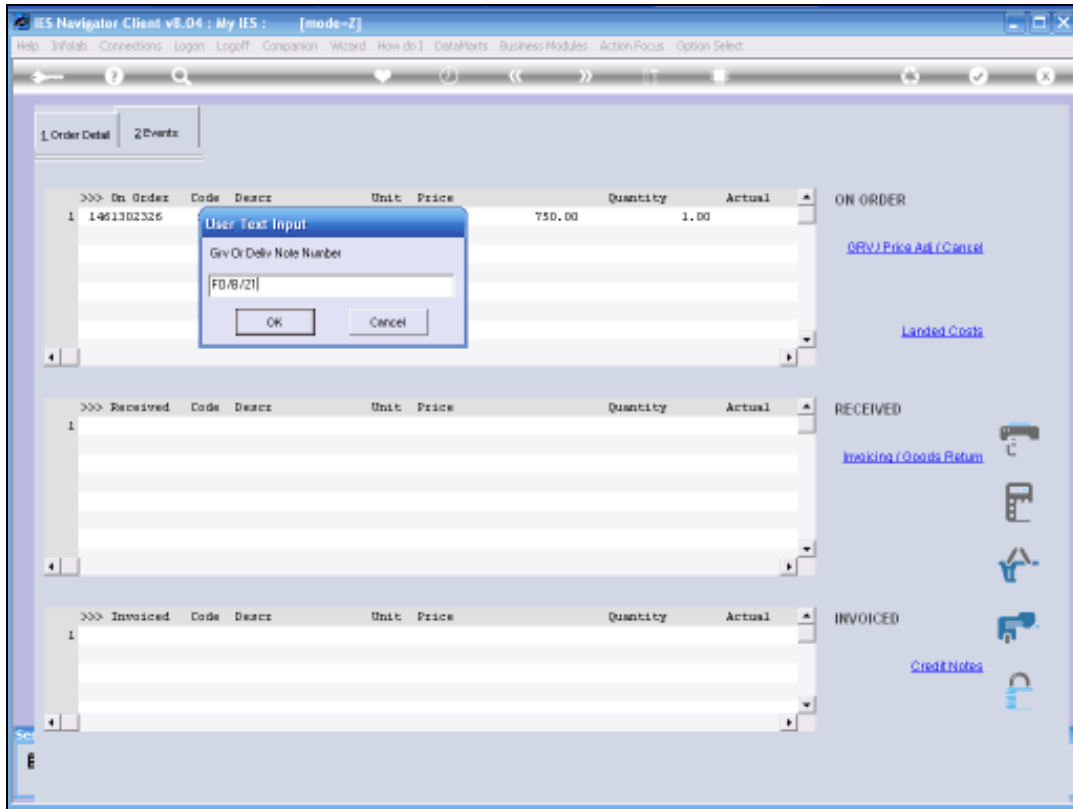
Slide 77  
Slide notes:



Slide 78  
Slide notes:

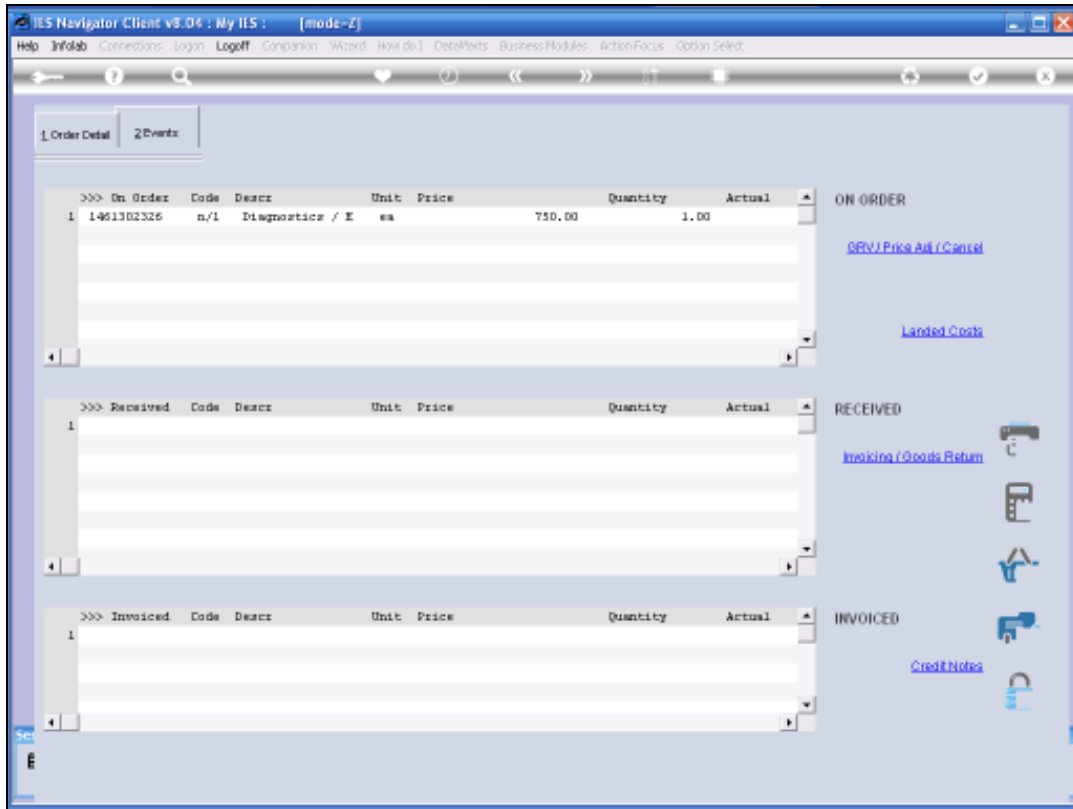


Slide 79  
Slide notes:



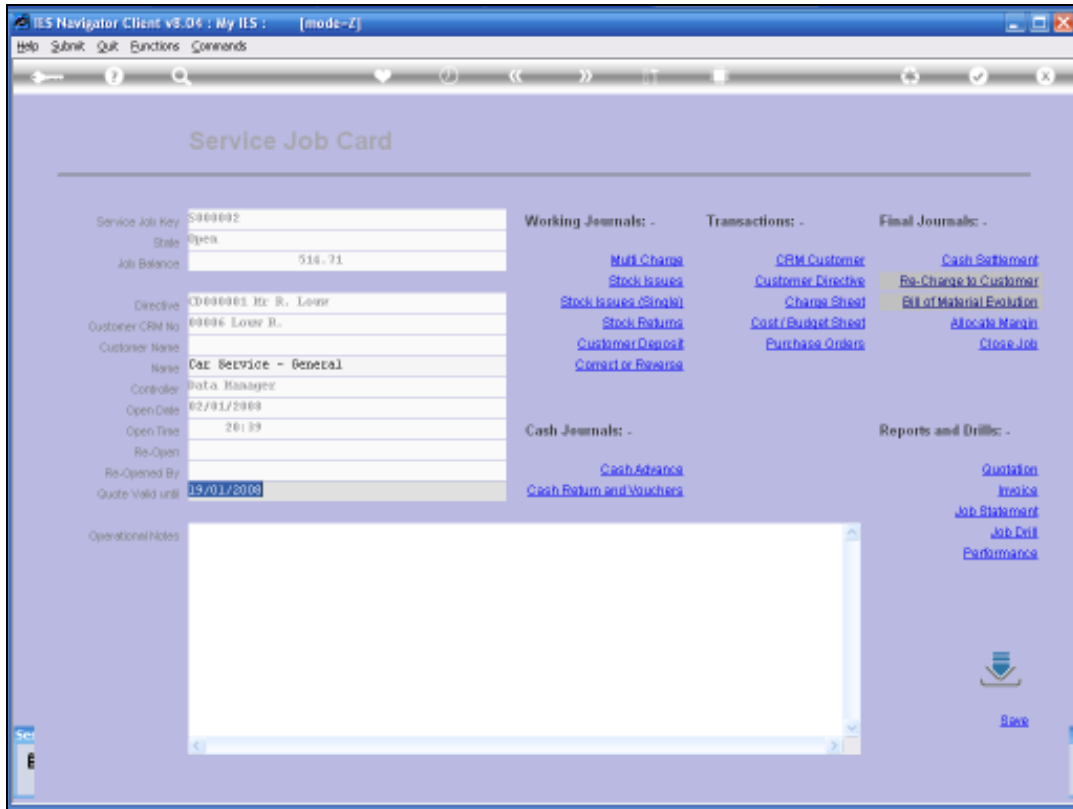
Slide 80  
Slide notes:



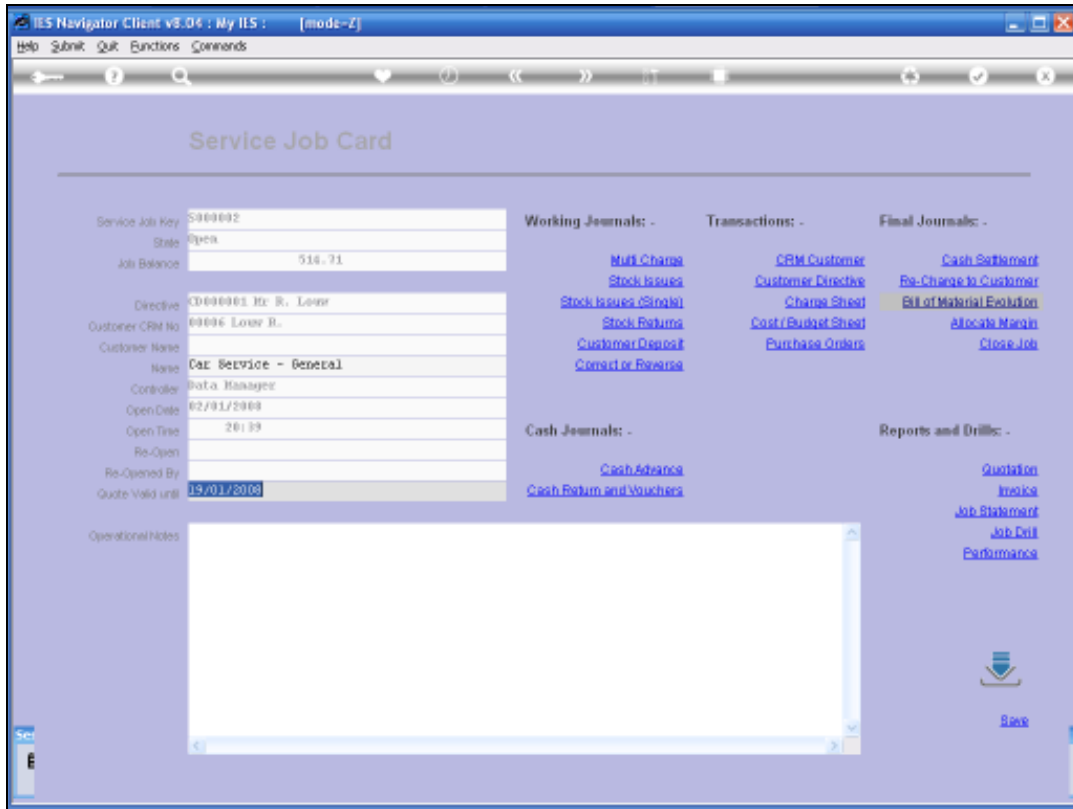


Slide 81  
Slide notes:

So this is an example of how we do Purchase Orders on Service Jobs.



Slide 82  
Slide notes:



Slide 83  
Slide notes: