

The screenshot shows the 'Service Job Card' interface in the IES Navigator Client. The window title is 'IES Navigator Client v8.04 : My IES : [mode-Z]'. The interface includes a menu bar (Help, Submit, Quit, Functions, Comments) and a toolbar with navigation icons. The main content area is titled 'Service Job Card' and contains a form with the following fields:

- Service Job Key: 5000002
- State: Open
- Job Balance: 312.96
- Directive: 0000003 Mr R. Lauer
- Customer CRM No: 00006 Lower B.
- Customer Name: Car Service - Benetal
- Control: Data Manager
- Open Date: 02/01/2008
- Open Time: 20:39
- Re-Open:
- Re-Opened By:
- Quote Valid until: 19/01/2008
- Operational Notes:

Below the form, there are three columns of links:

- Working Journals: -**
 - [Multi Change](#)
 - [Stock Issues](#)
 - [Stock Issues \(Single\)](#)
 - [Stock Returns](#)
 - [Customer Deposit](#)
 - [Contract Reverse](#)
- Transactions: -**
 - [CRM Customer](#)
 - [Customer Directive](#)
 - [Change Sheet](#)
 - [Cost / Budget Sheet](#)
 - [Purchase Orders](#)
- Final Journals: -**
 - [Cash Settlement](#)
 - [Re-Charge to Customer](#)
 - [Bill of Material Evolution](#)
 - [Allocate Margin](#)
 - [Close Job](#)

Additional sections include:

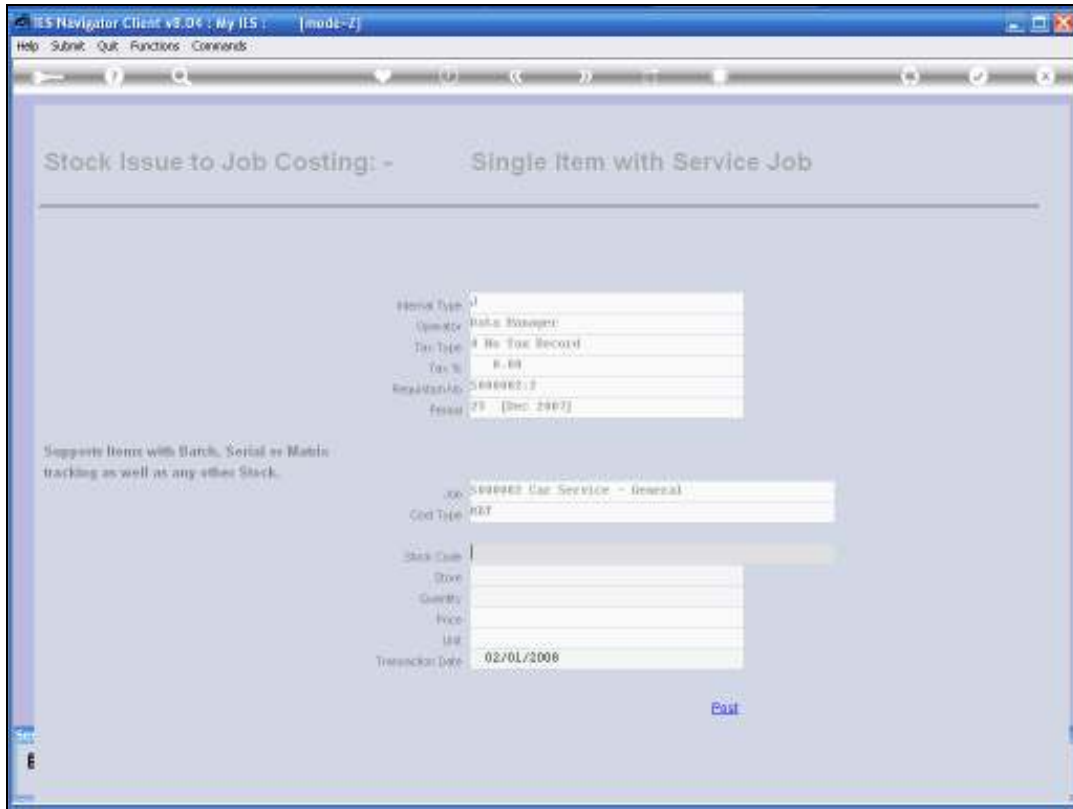
- Cash Journals: -**
 - [Cash Advance](#)
 - [Cash Return and Vouchers](#)
- Reports and Drills: -**
 - [Quotation](#)
 - [Invoice](#)
 - [Job Statement](#)
 - [Job Drill](#)
 - [Performance](#)

At the bottom right, there is a download icon and a 'Back' button.

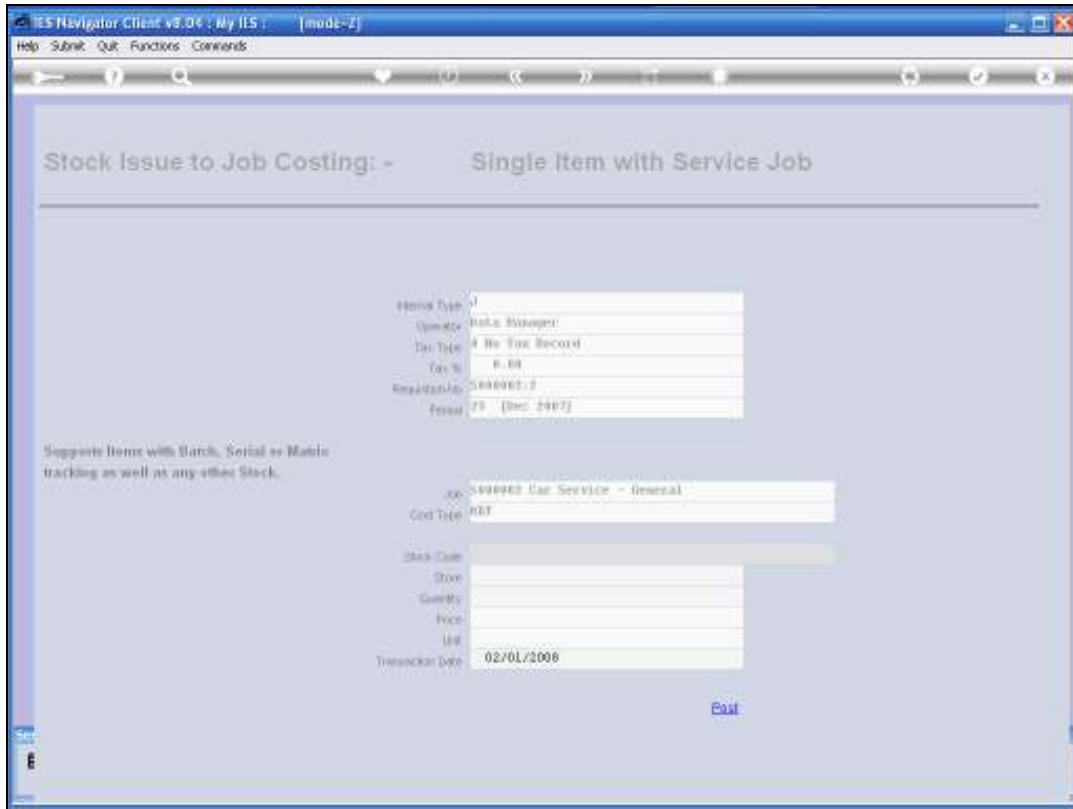
Slide 1

Slide notes:

In this session we discuss the Single Issue Option. We will only use this Option when the System advises us to do so. In other words we would normally use the Stock Issues where we can do multiple Issues on the same Journal Screen. But when the System encounters an Item that is Tracked, either by Batch, by Serial Number or by Matrix Tracking, then the System will suggest that it is not going to Process that particular Item on the Multi Screen and that we should use the Single Issue Option for this particular Stock Item. Then we will be prompted also for the Tracking Information.



Slide 2
Slide notes:



Slide 3
Slide notes: