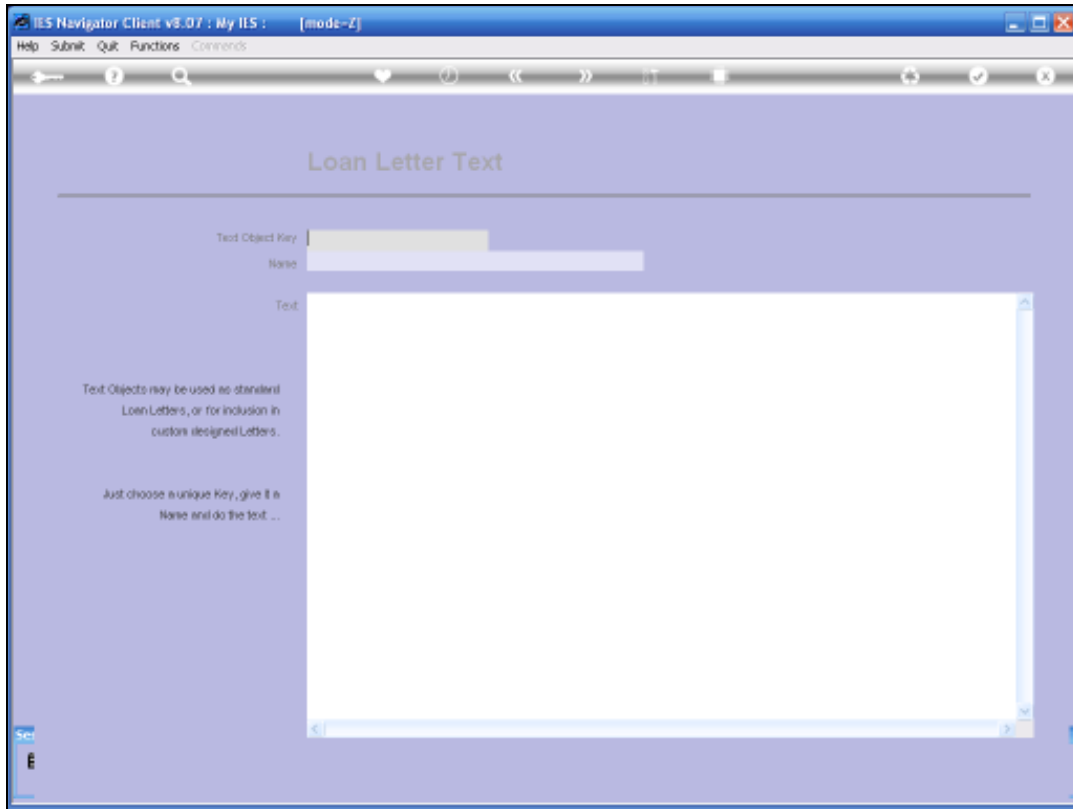


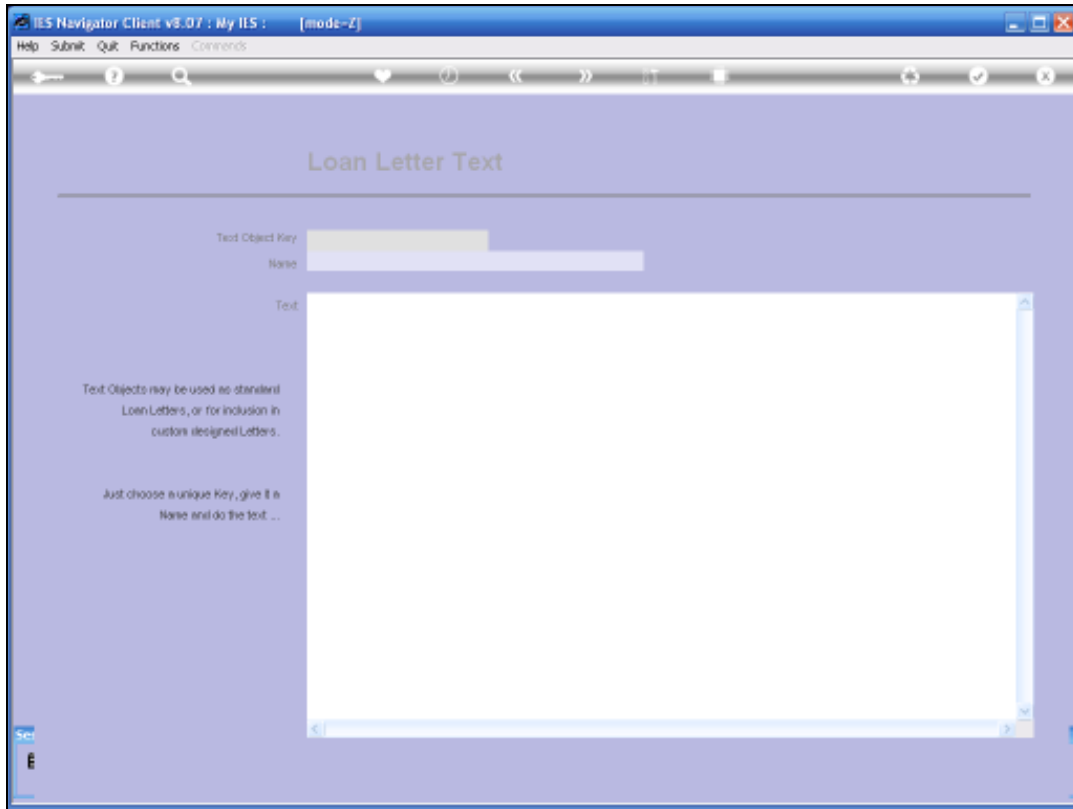
Slide 1

In this session we are looking at "Loan Letters". Loan Letters are predefined Letters that we can Edit and that we can Re-use.

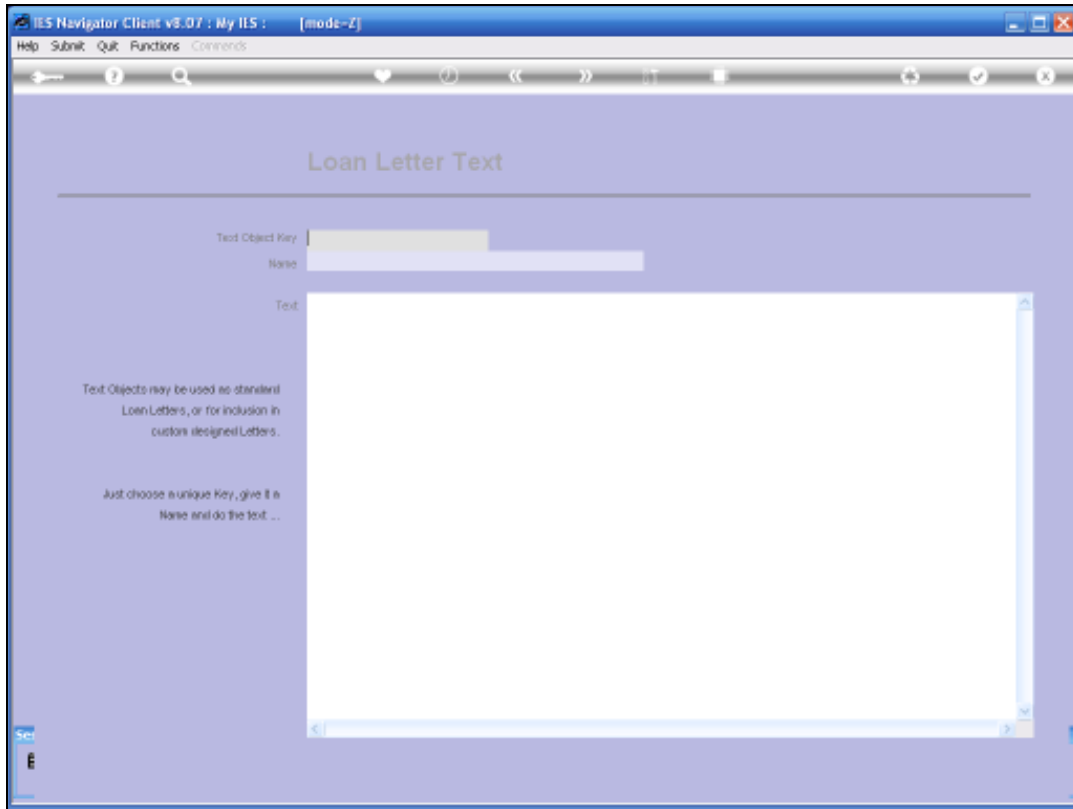
We can define as many of them as we like, and then we can run them off for re-distribution to selected Loans.



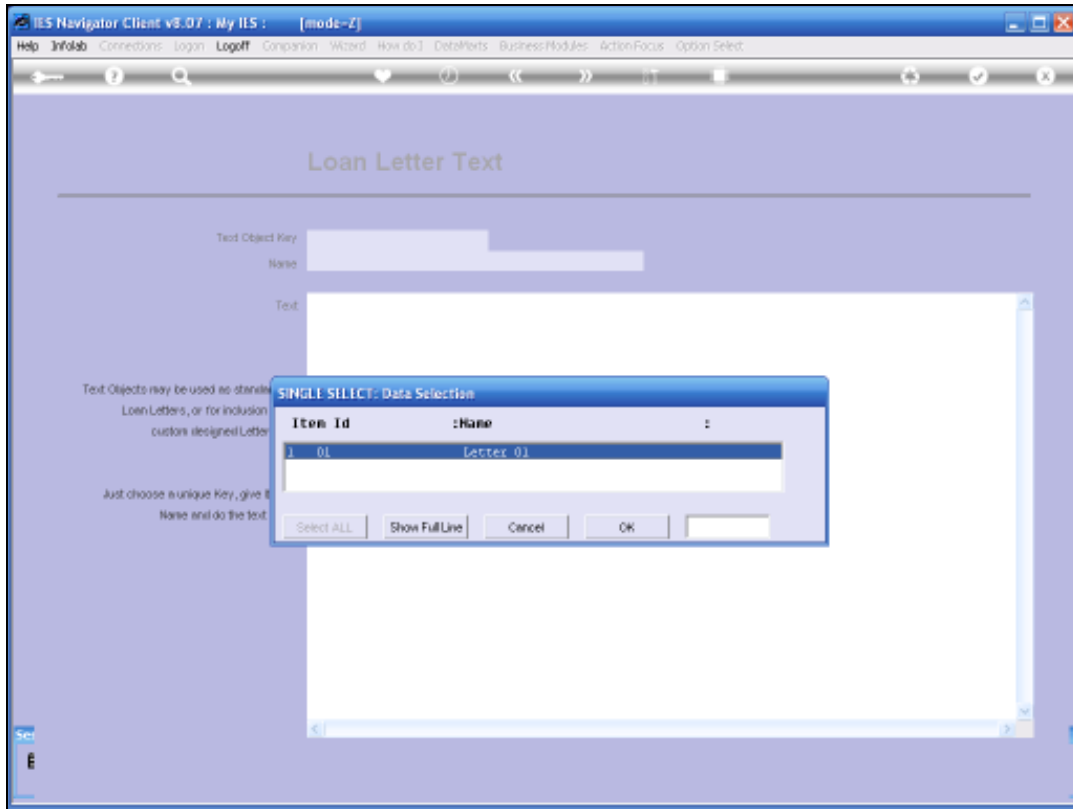
Slide 2



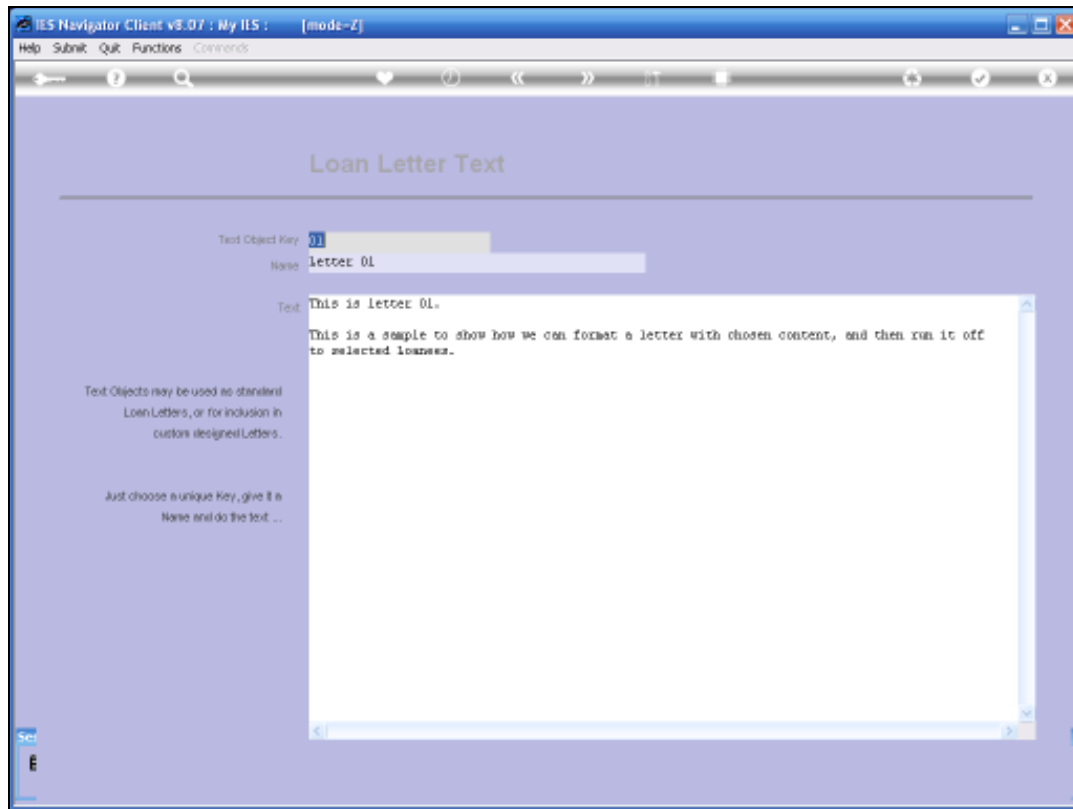
Slide 3



Slide 4



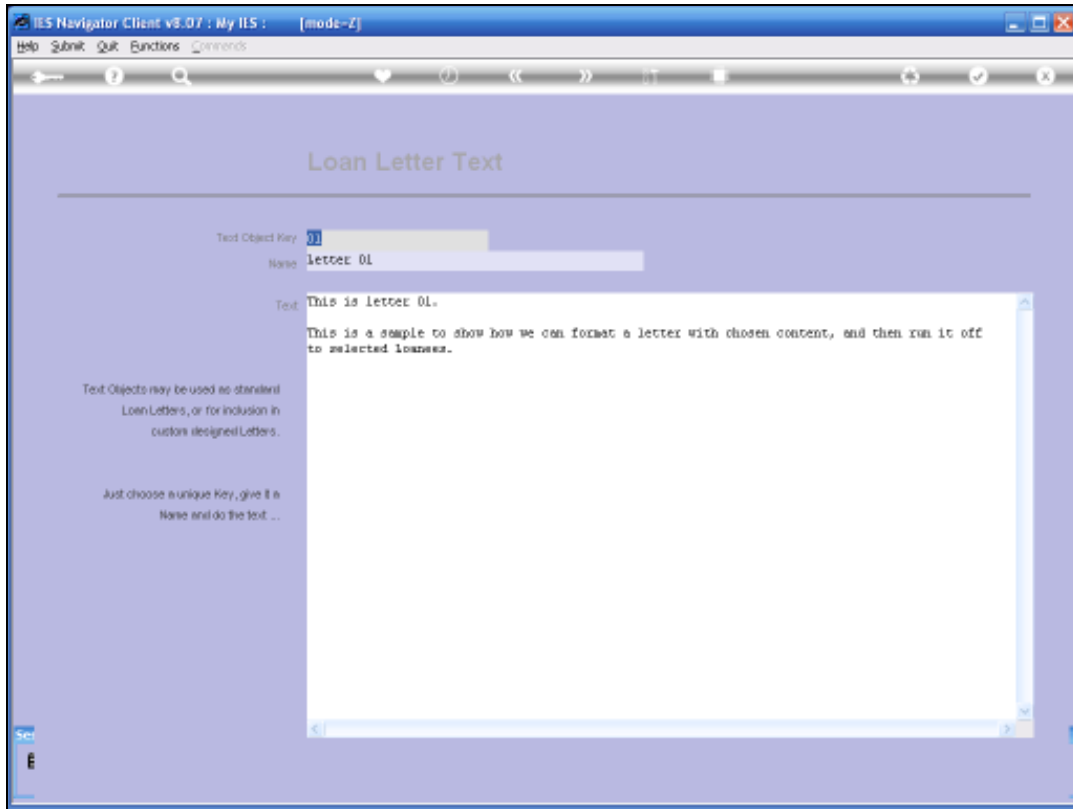
Slide 5



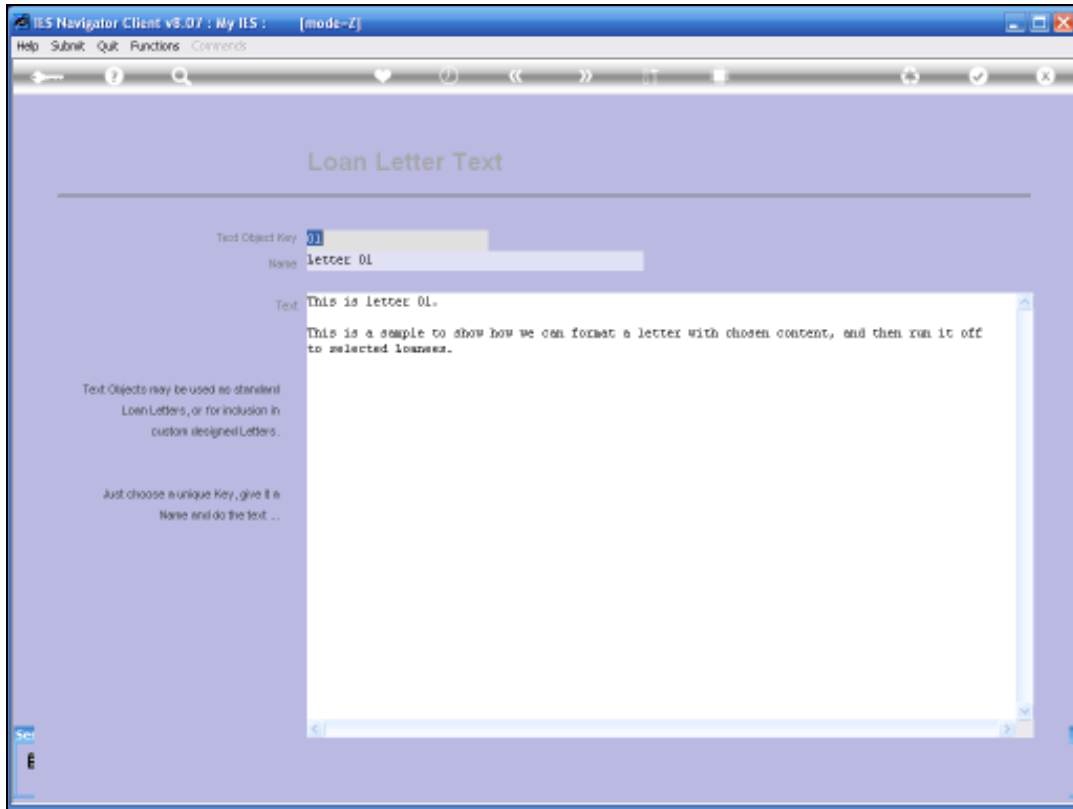
Slide 6

So this is an example of a Loan Letter, which of course might usually be longer than this one. Of Course we can select this Letter as an object when we run the "Print Letters" Report.

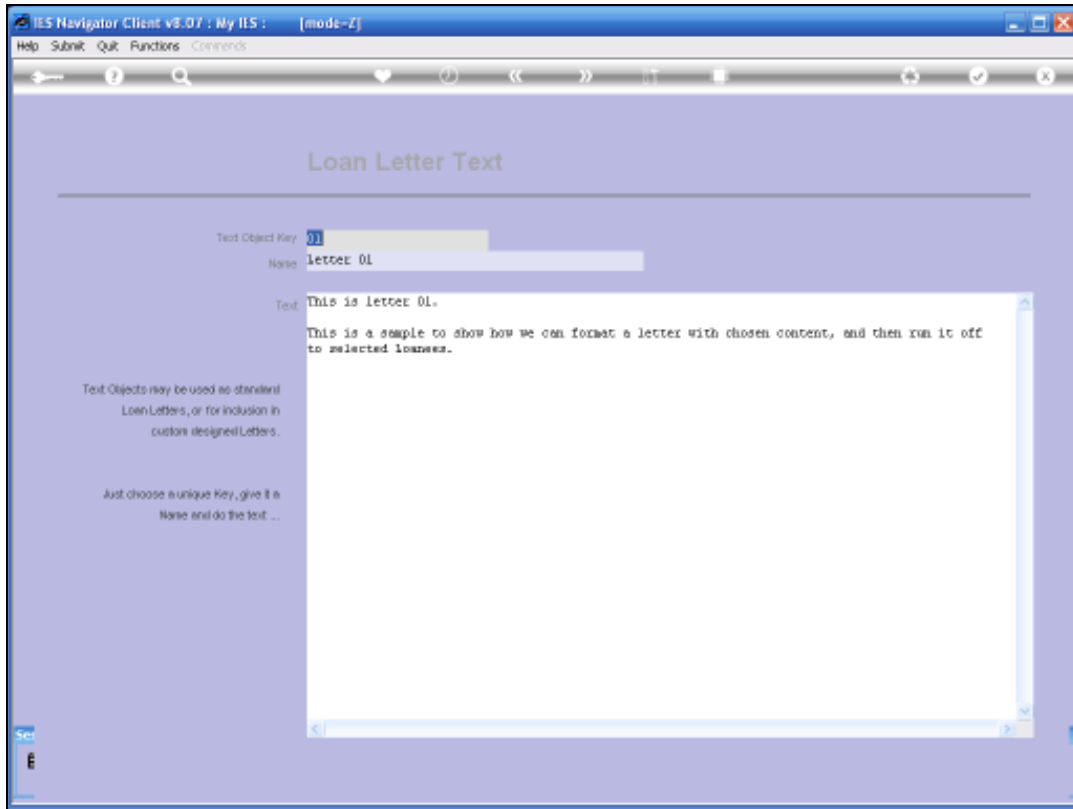
Then for all the Loans that we select, the System will include the particular Loatee and the Address and this Letter.



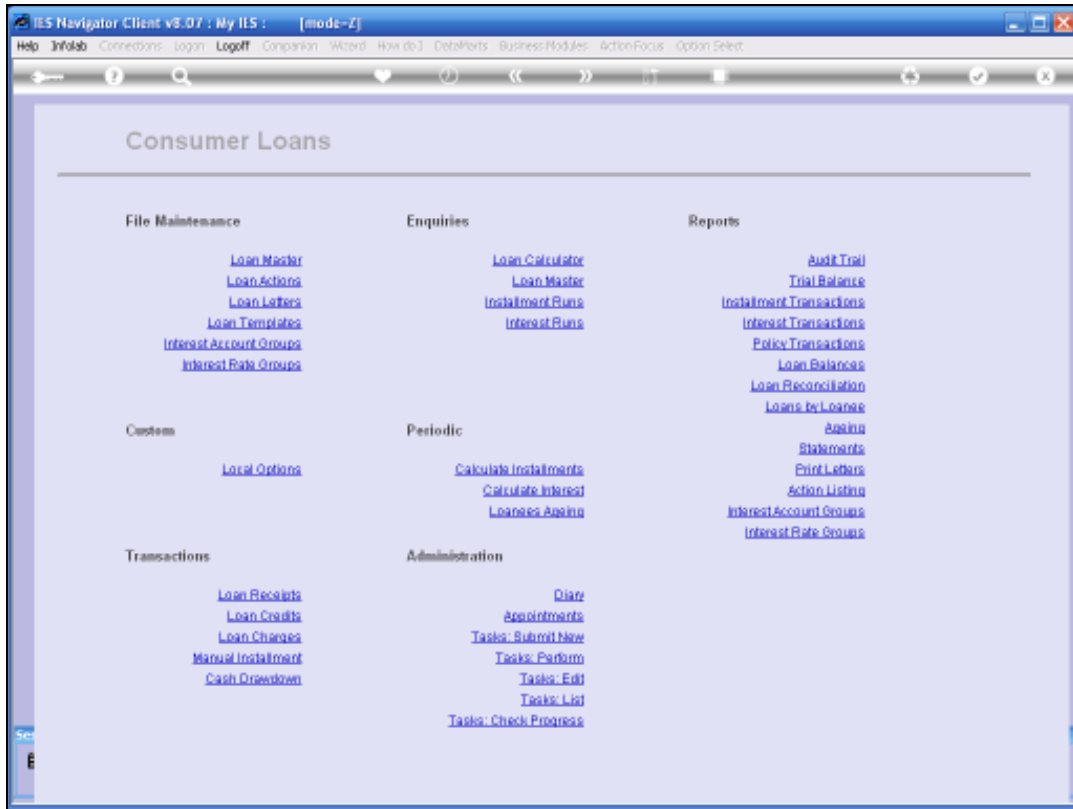
Slide 7



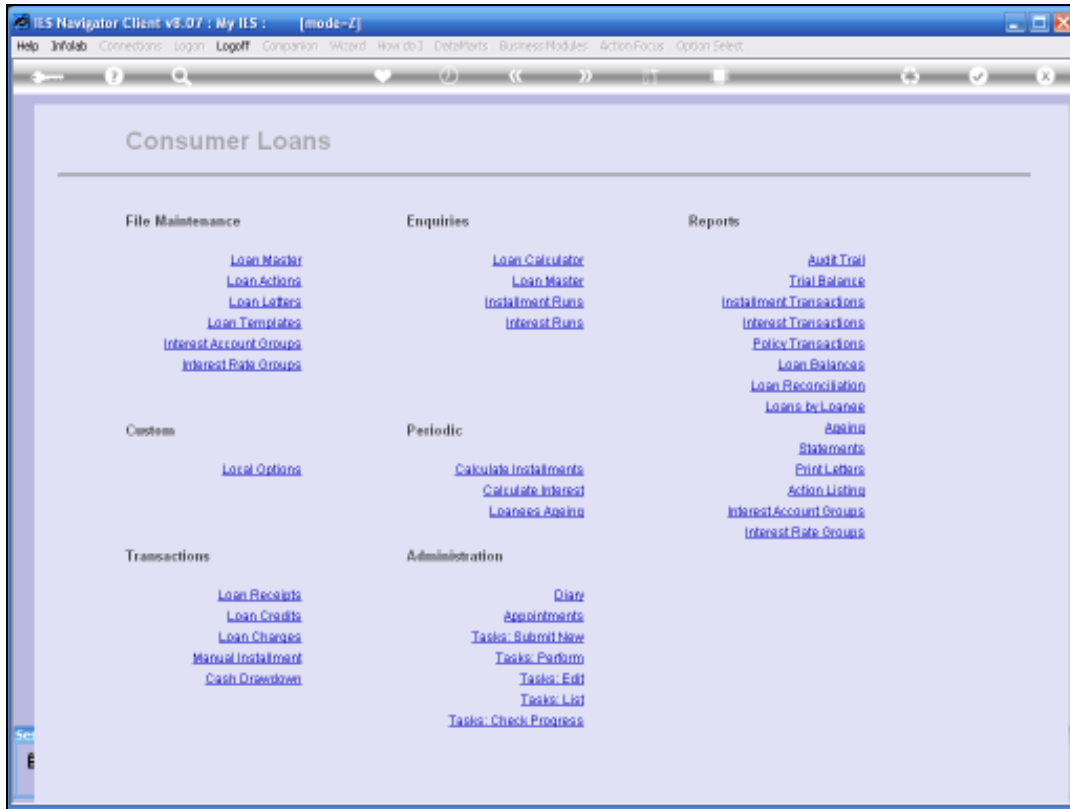
Slide 8



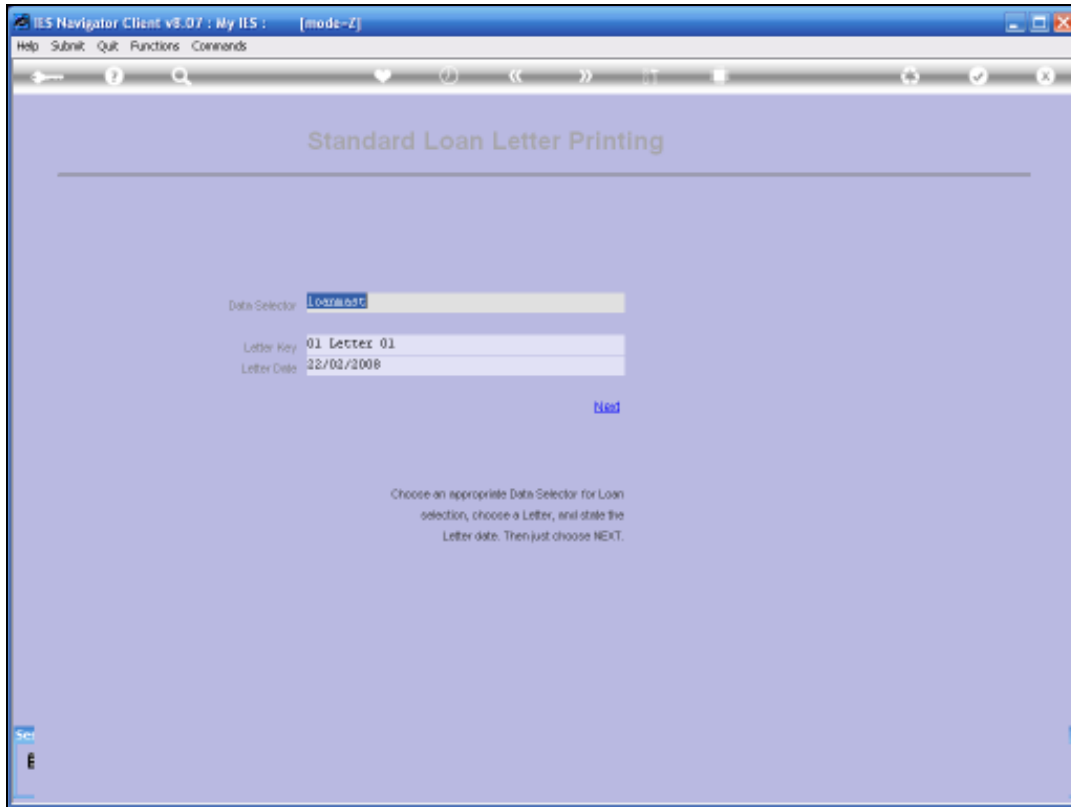
Slide 9



Slide 10



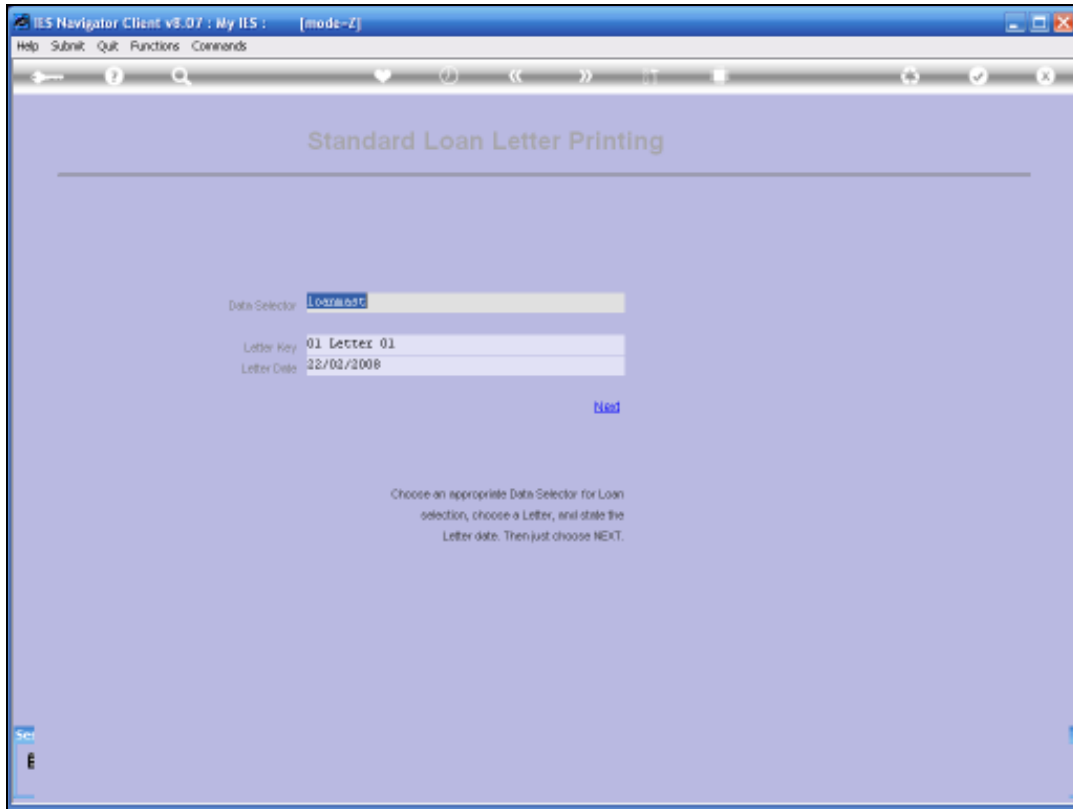
Slide 11



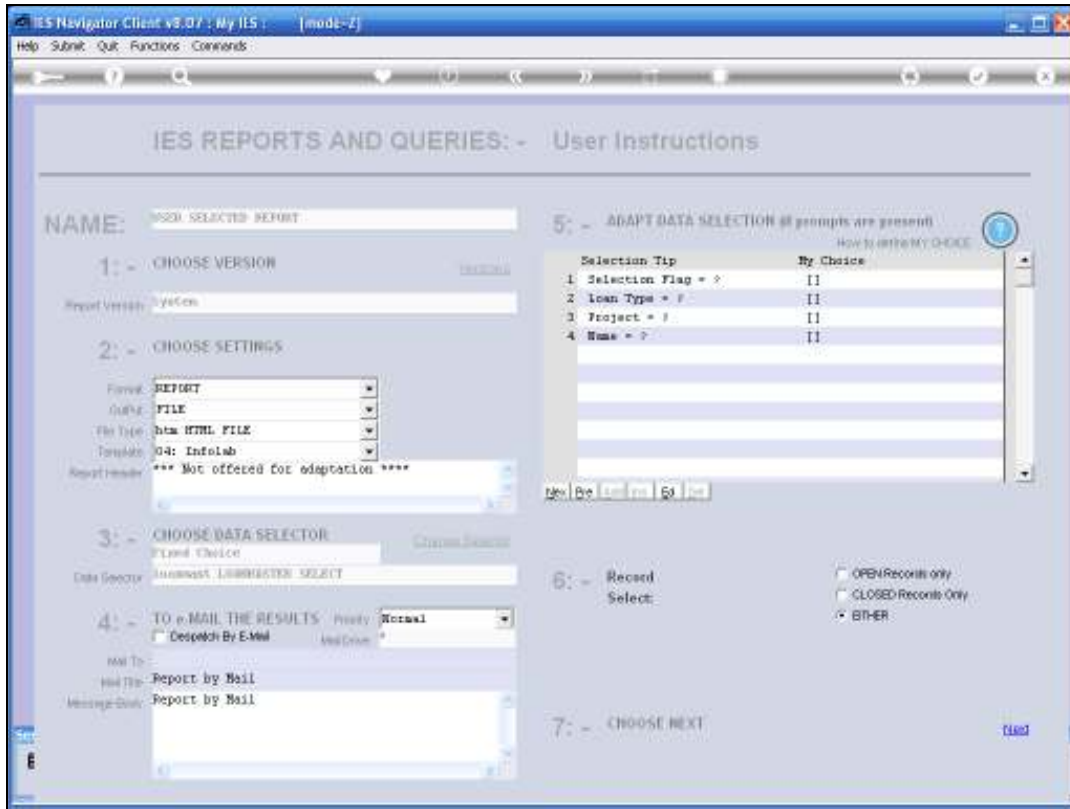
Slide 12

Note that we can choose a Data Selector that will allow us to select the particular set of Loans for which we want to Print this particular letter.

We then select the Letter Object and the Letter Date.



Slide 13



Slide 14

IES Navigator Client v8.07 : My IIS : [mode-Z]

Help Submit Quit Functions Comments

IES REPORTS AND QUERIES: - User Instructions

NAME:

1: - CHOOSE VERSION [Default](#)

Report Version:

2: - CHOOSE SETTINGS

Format:

Output:

File Type:

Template:

Report Header:

3: - CHOOSE DATA SELECTOR [Custom Selector](#)

Plain Choice:

Data Selector:

4: - TO e-MAIL THE RESULTS Priority:

Dispatch By E-Mail [Add Group](#)

Mail To:

Mail To:

Message Body:

5: - ADAPT DATA SELECTION @ groups are present

How to INTERPRET CHOICE

Selection Tip	By Choice
1 Selection Flag = ?	
2 Loan Type = ?	
3 Project = ?	
4 Name = ?	

6: - Record Select

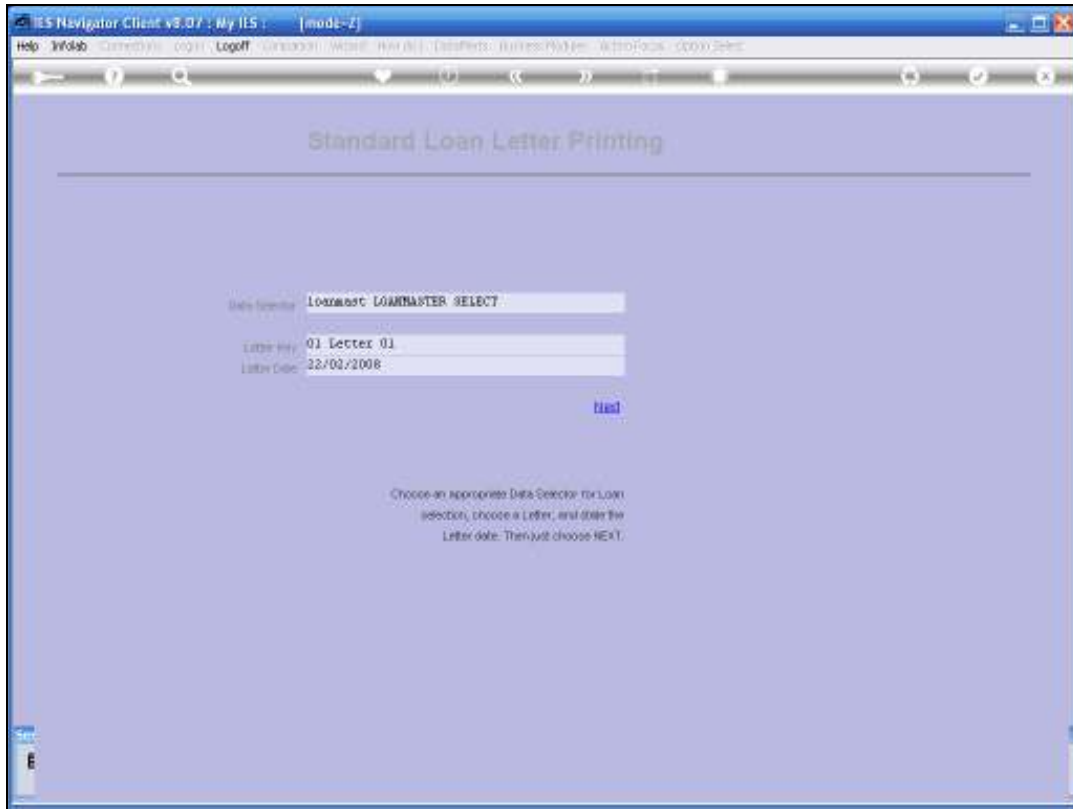
OPEN Records Only

CLOSED Records Only

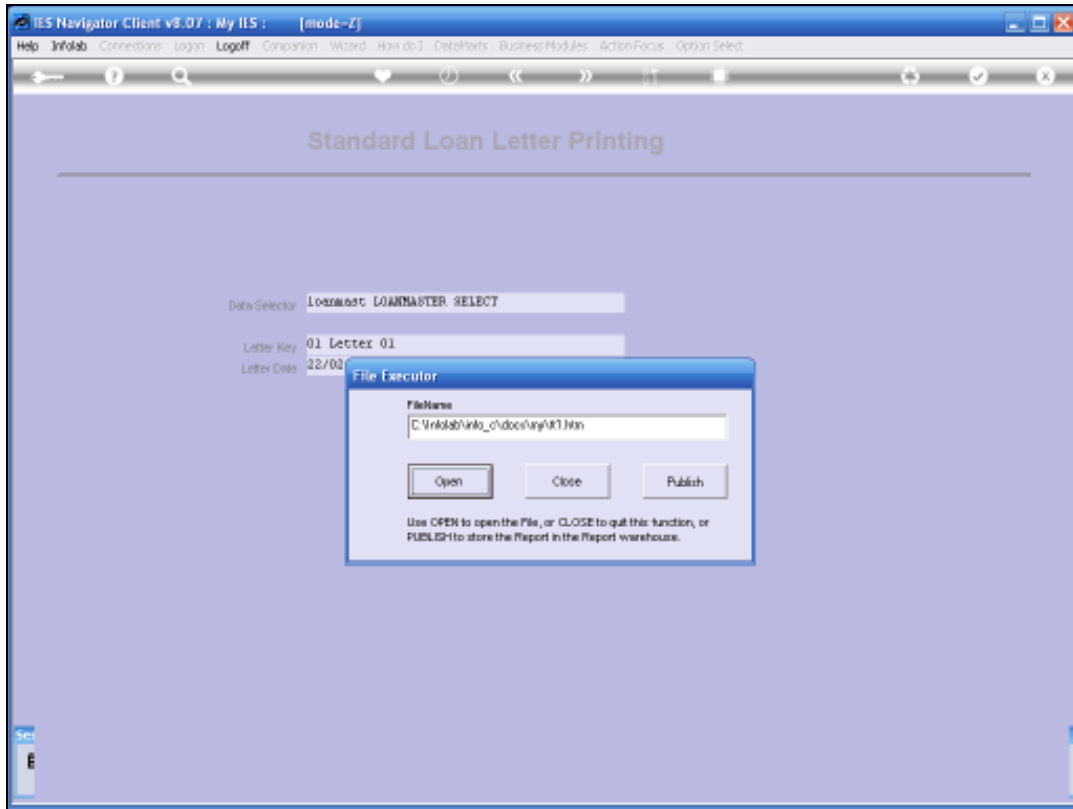
EITHER

7: - CHOOSE NEXT [Next](#)

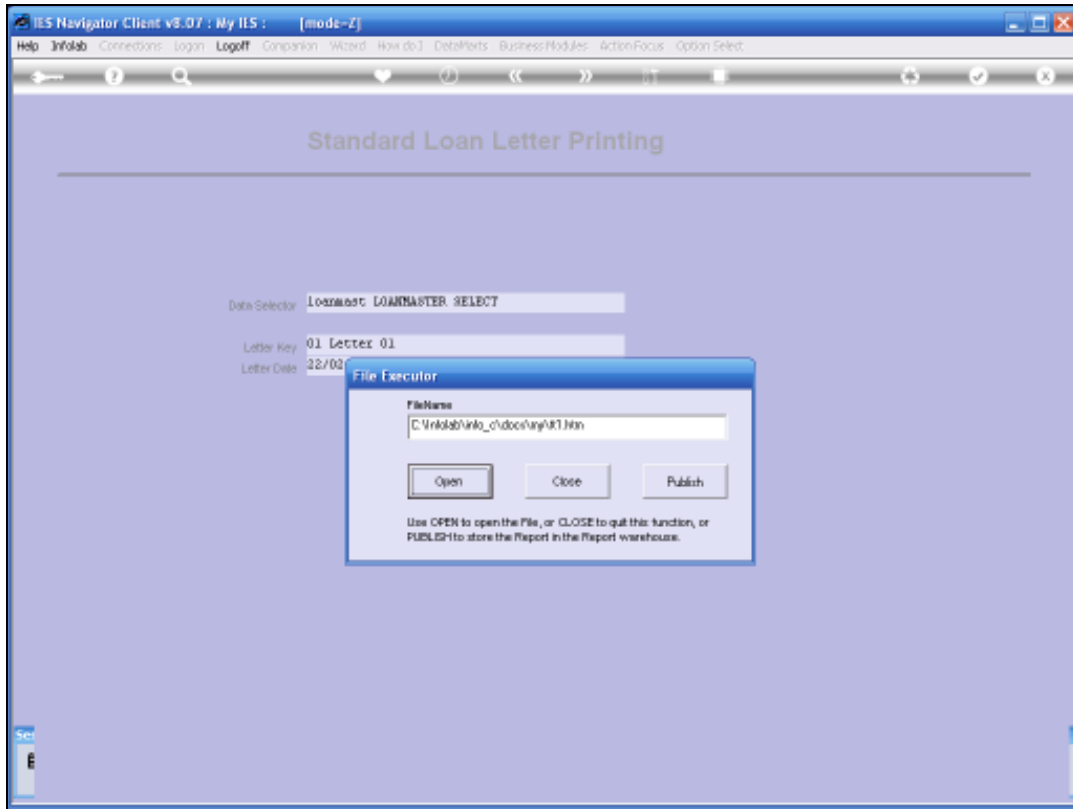
Slide 15



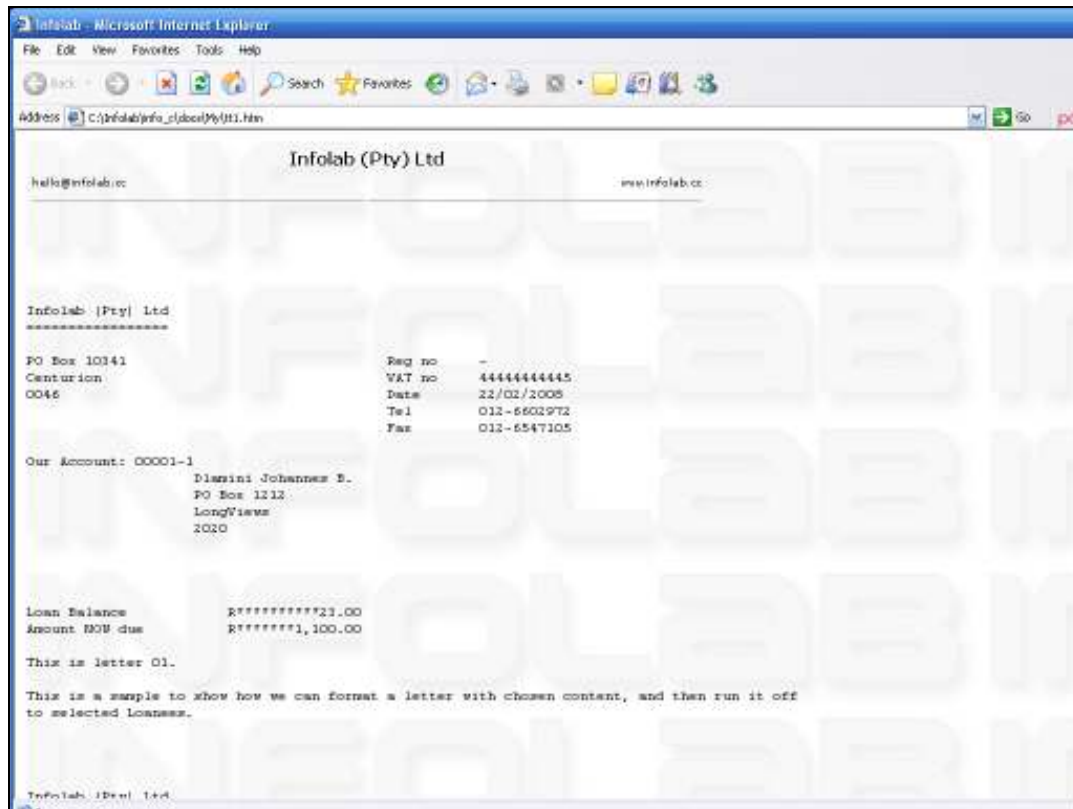
Slide 16



Slide 17



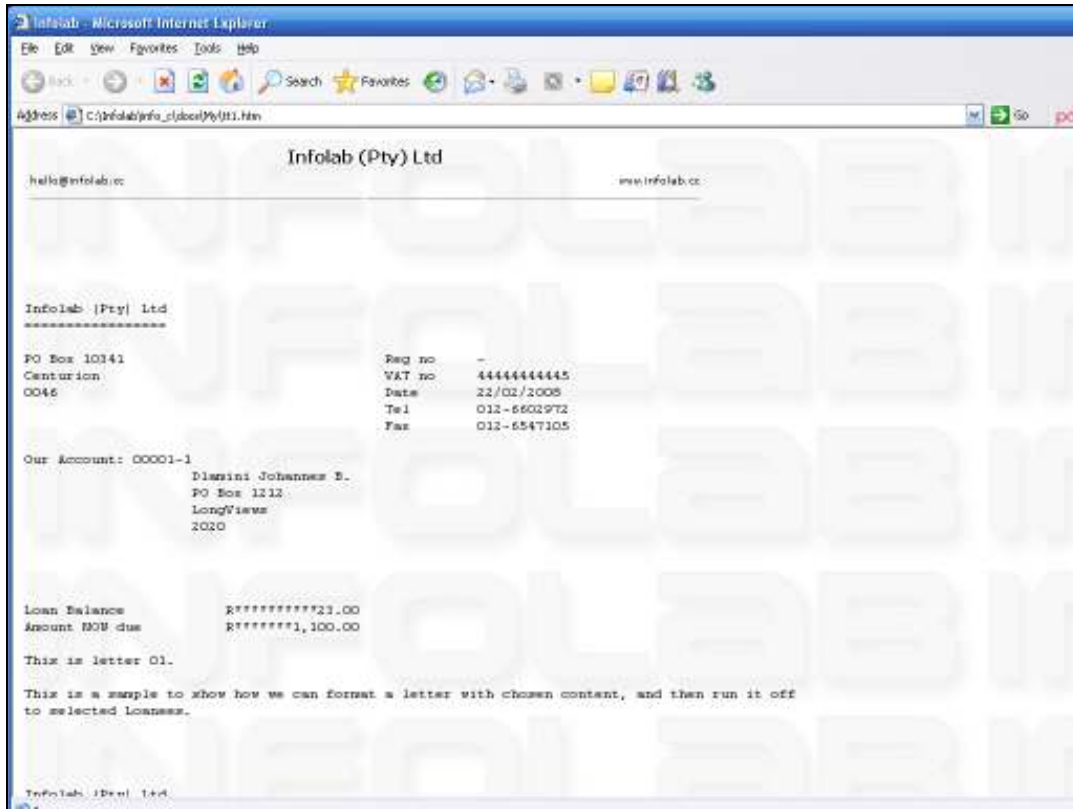
Slide 18



Slide 19

Here we have an example of what the System has produced.

The format for the Loans, i.e. what else appears on the printout, apart from the Letter content, can of course be Customized.



Slide 20