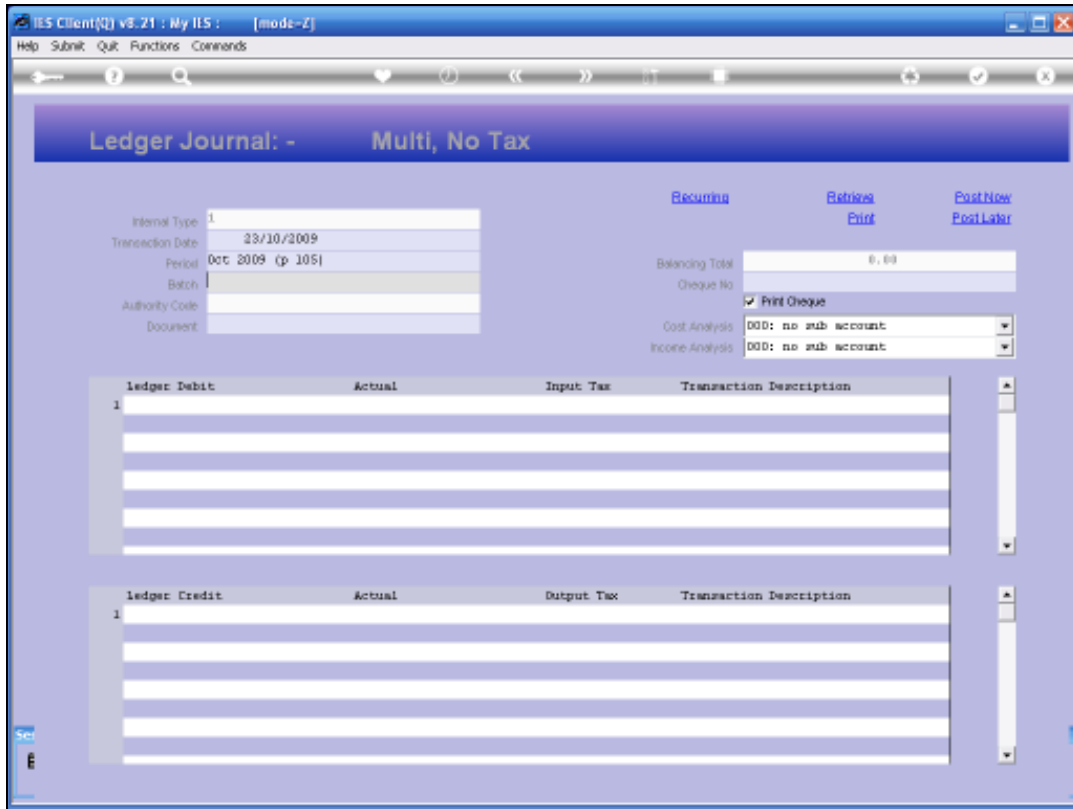
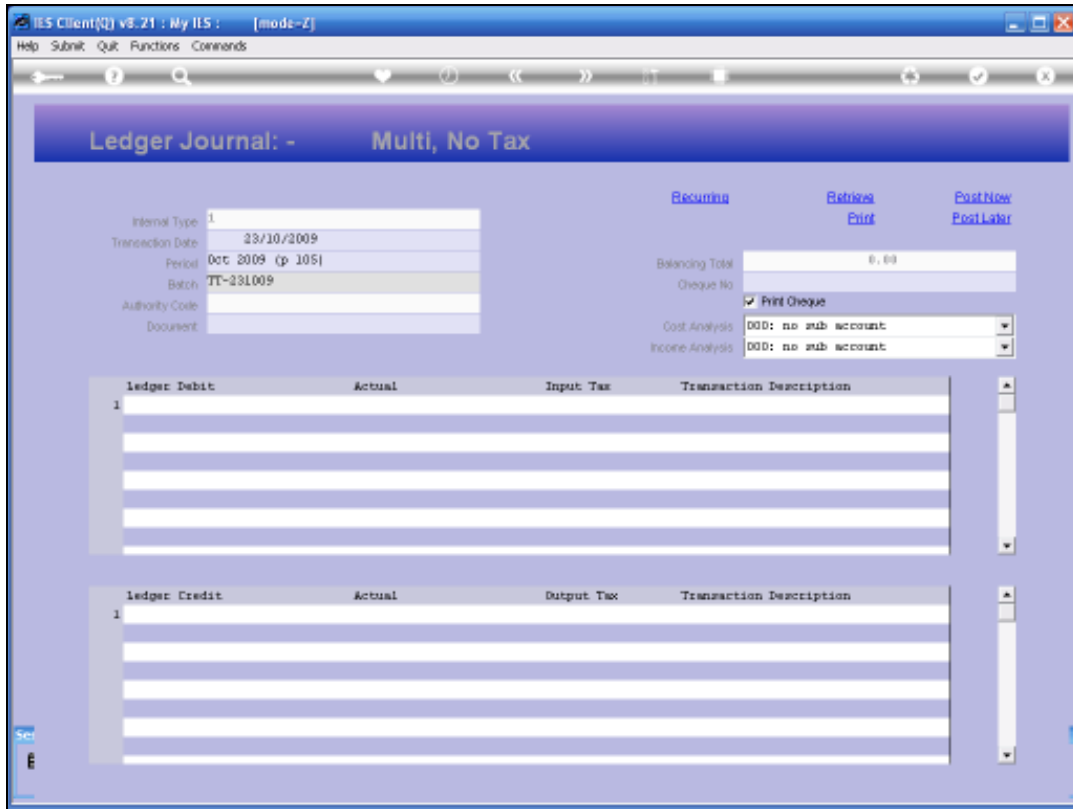


Slide 1

Slide notes: Opening of a new Batch is automatic. When a Batch Number is captured on a Journal screen, the system will sense immediately if the Batch is new.



Slide 2
Slide notes:



Slide 3
Slide notes:

IES Client(v8.21) : My IES : [mode-Z]

Help Submit Quit Functions Commands

New Batch

The system senses opening of a New Batch: -

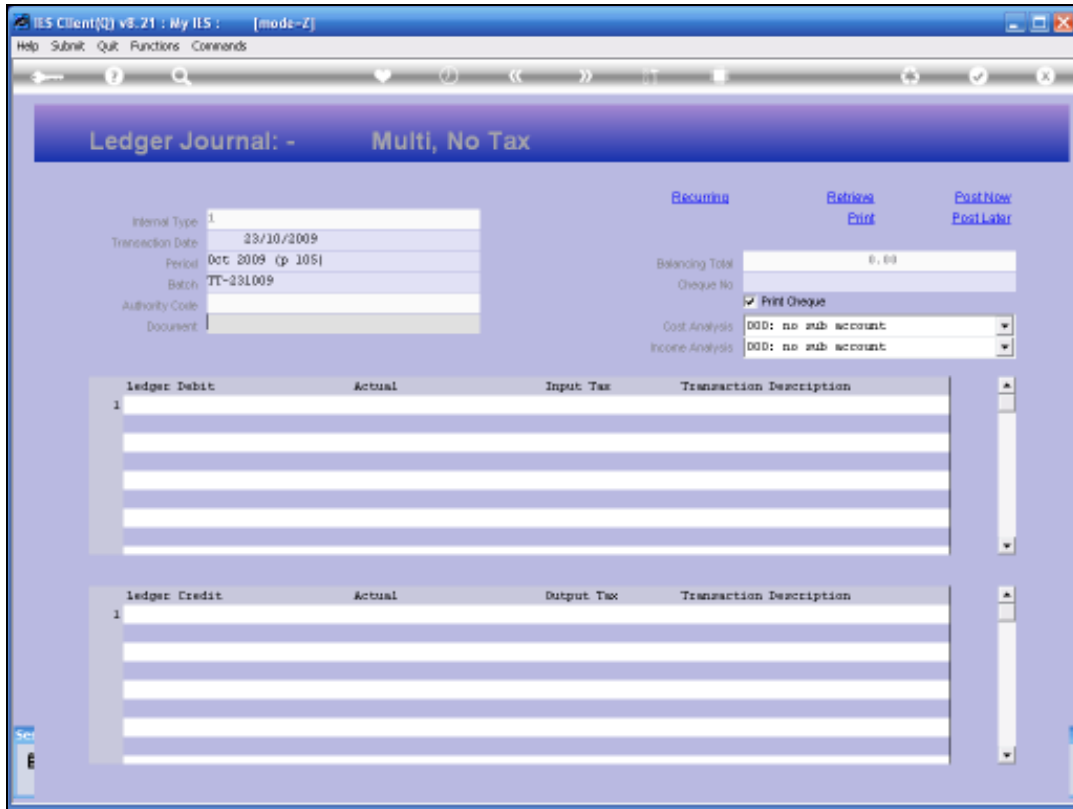
Batch no	T7-231009
Owner	Terry
Date Created	23/10/2009
Time Created	09:55:13
Period Created	Oct 2009 (p 185)
Open/Closed	Open
Financial Actual Expected	
Quantity Actual Expected	0,00
Financial Committed Expected	0,00
Financial Ordered Expected	0,00

Please complete only the Fields
this Batch should be measured on

[Edit](#) [Save](#)

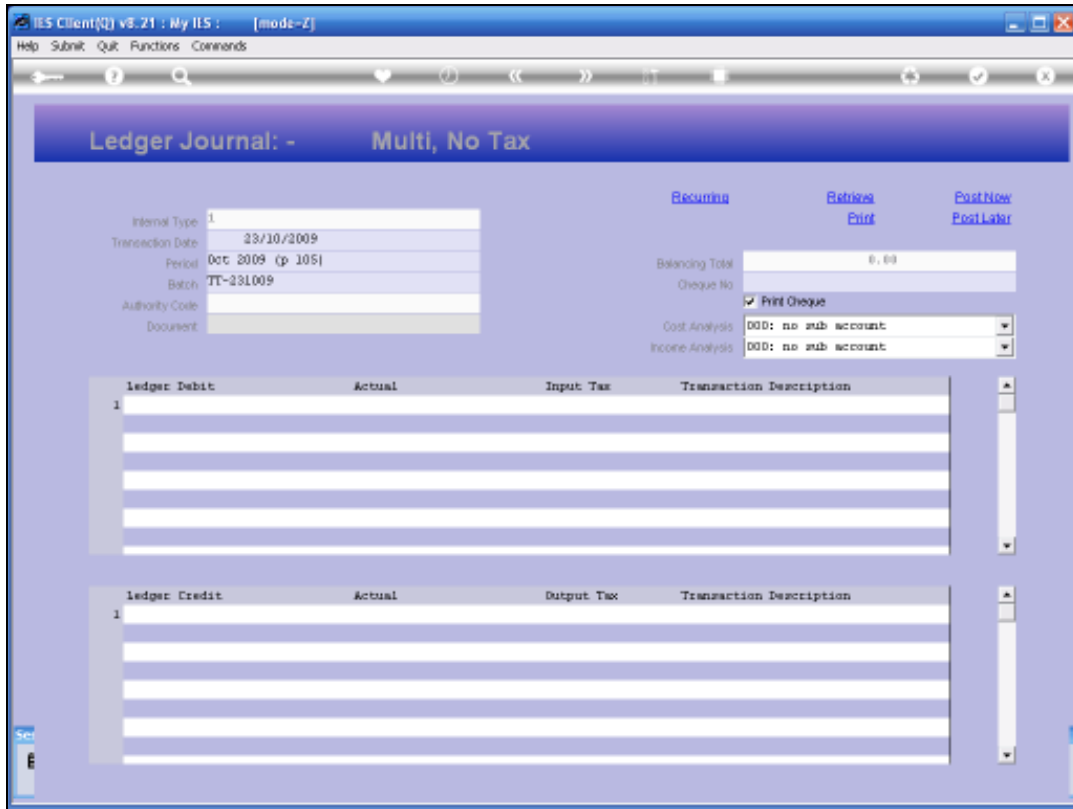
Slide 4

Slide notes: When a new Batch Number is used, the system will prompt with the NEW BATCH screen. The User can now capture any expected numbers that should be balanced by the system. For automatic Batch Numbers from the lookup function, as well as any other Batch numbers where there is no need to perform Balancing, there is no need to capture any Expected Values and we can just choose SAVE. For any Batch Number series where we want the Balancing to be performed, we will usually capture a FINANCIAL ACTUAL EXPECTED. If we wish to Balance on Quantities, then that Value may be captured, and likewise in the case of Purchase Order Series for Goods Received Batches we may optionally capture a FINANCIAL COMMITTED EXPECTED.



Slide 5

Slide notes: Once we save the new Batch, we can proceed with Journal Capture and the new Batch is active and open.



Slide 6
Slide notes:



Slide 7

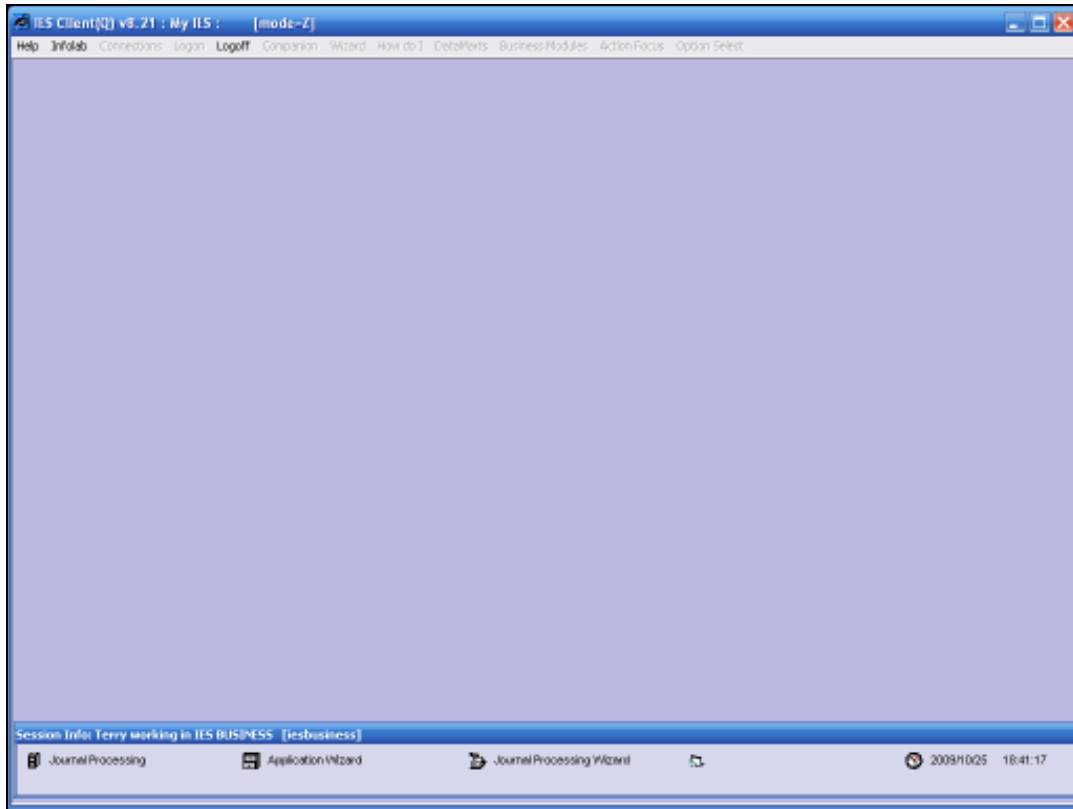
Slide notes: There is also an Open and Close function for Batches, which can be used to intervene for a Batch that needs to be re-opened after it was closed by the system, or to close a Batch that the system will not close.



Slide 8
Slide notes:

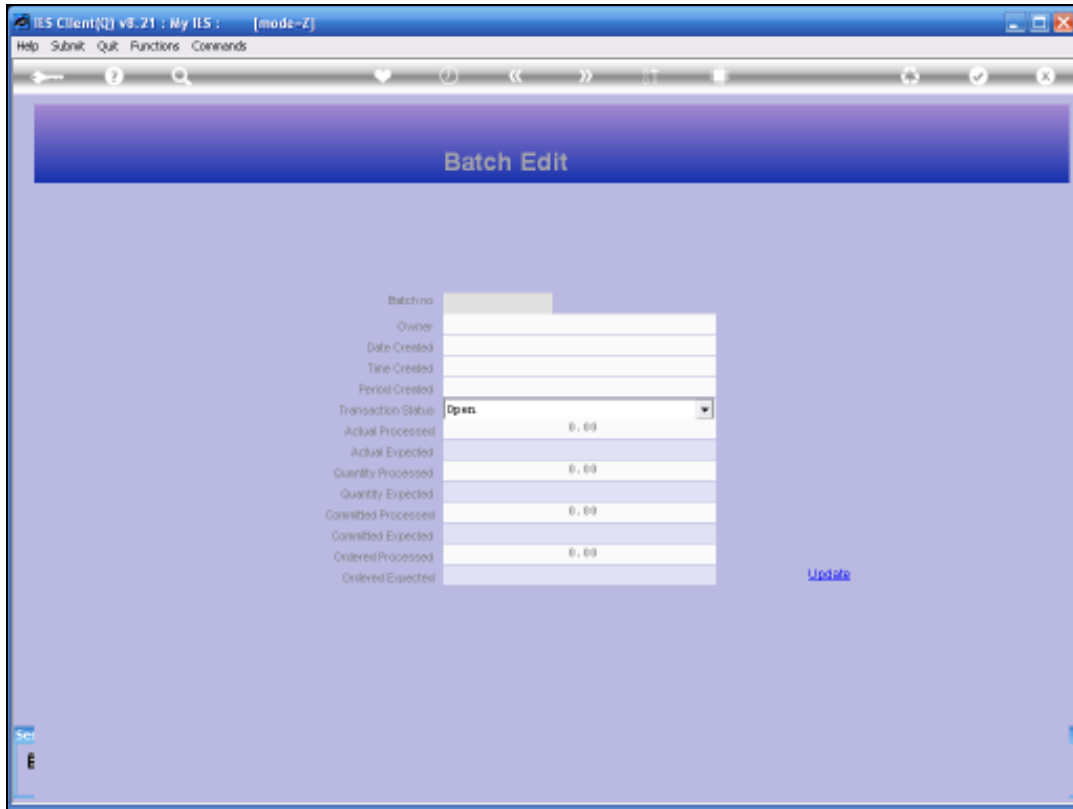


Slide 9
Slide notes:



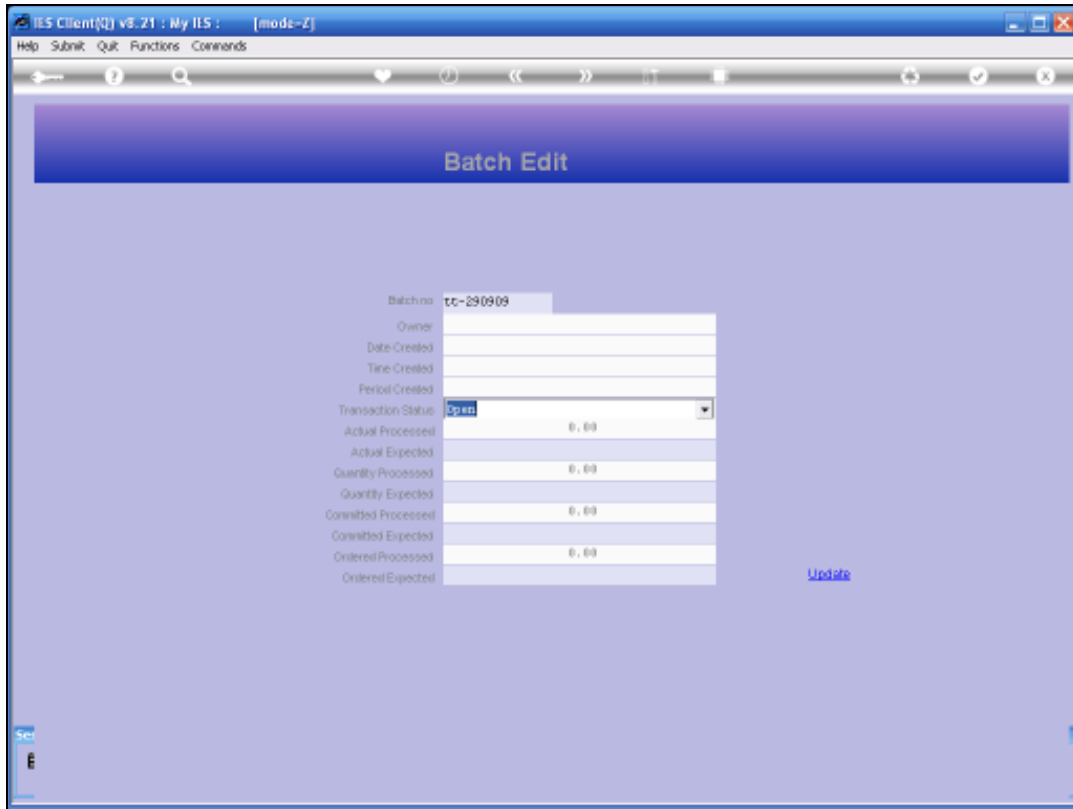
Slide 10

Slide notes:



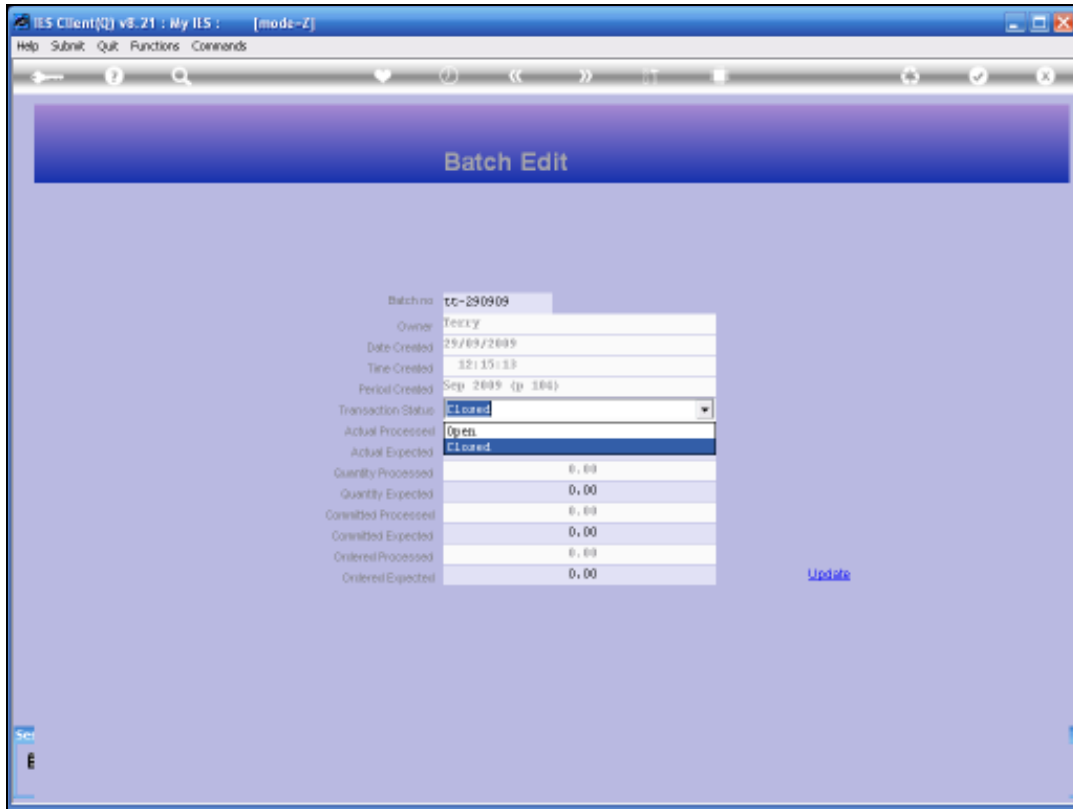
Slide 11

Slide notes: A Batch that is measured for Balancing purposes is a Batch where some Expected value was captured, and such a Batch will automatically be closed by the system the moment it balances. A Batch with no Expected Values will never be closed automatically. It can remain open or it can be closed manually.



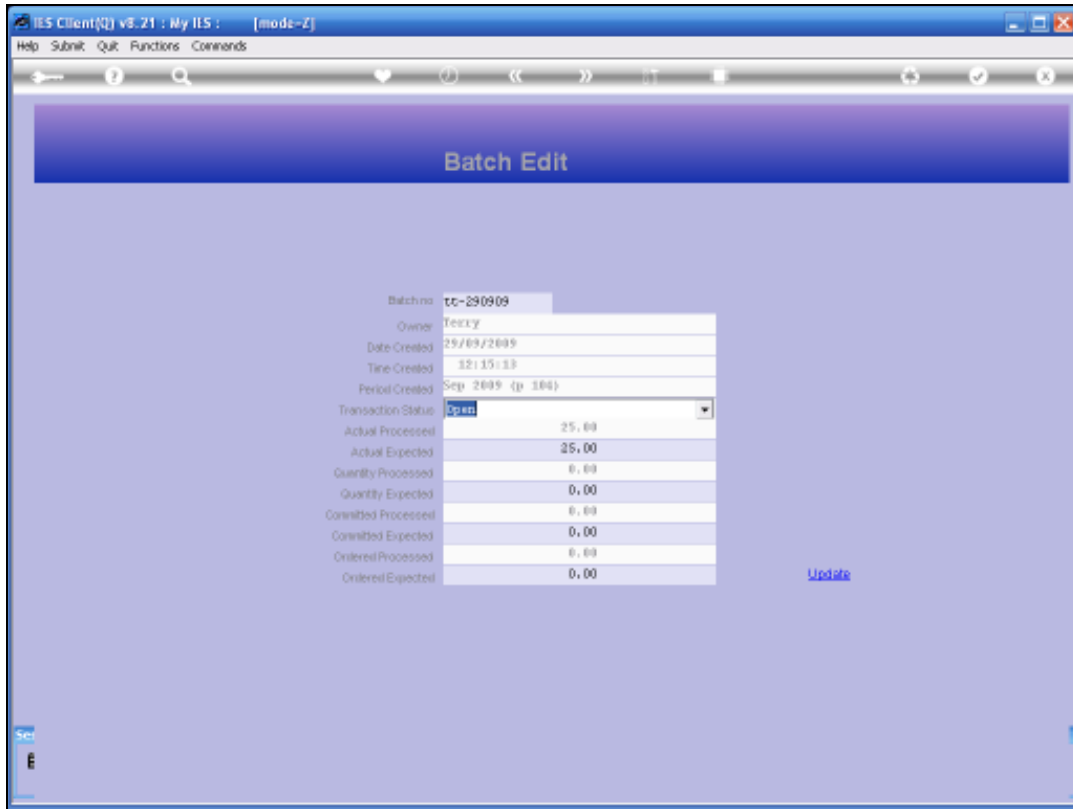
Slide 12

Slide notes: The OPEN or CLOSED state can be toggled and then the Batch can be updated with the latest status.



Slide 13

Slide notes:



Slide 14

Slide notes: A Batch that is OPEN will allow more Transactions and a Batch that is CLOSED will not.



Slide 15
Slide notes: