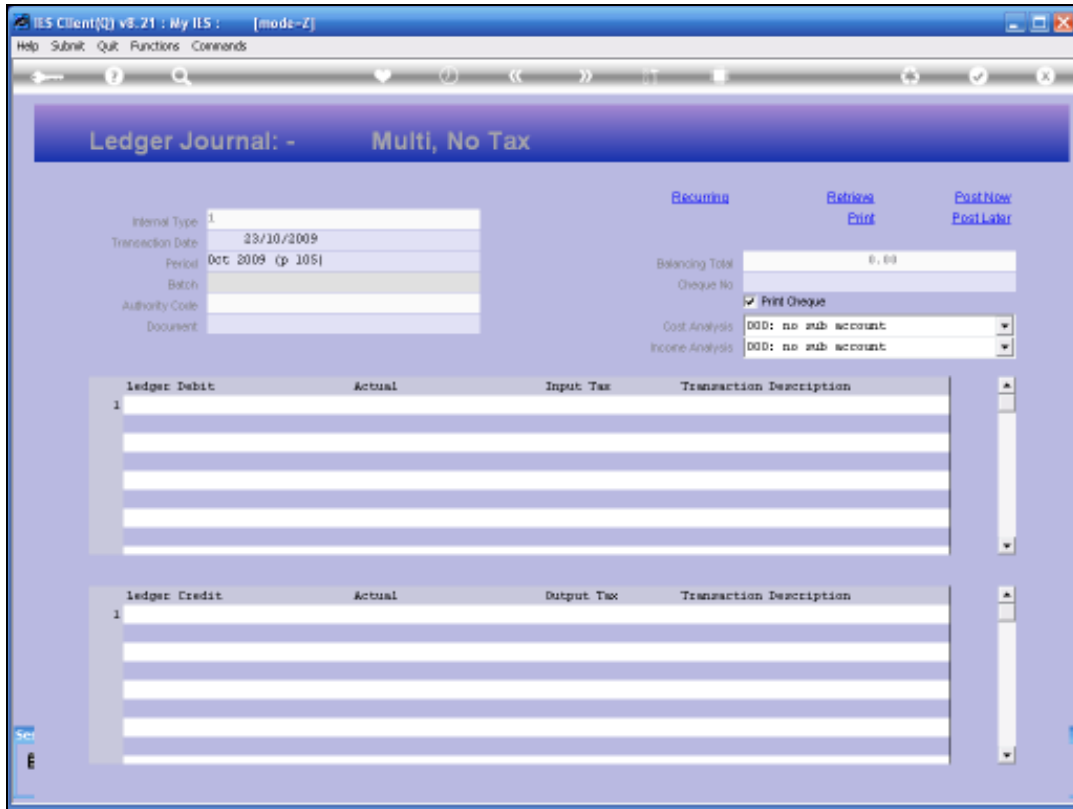
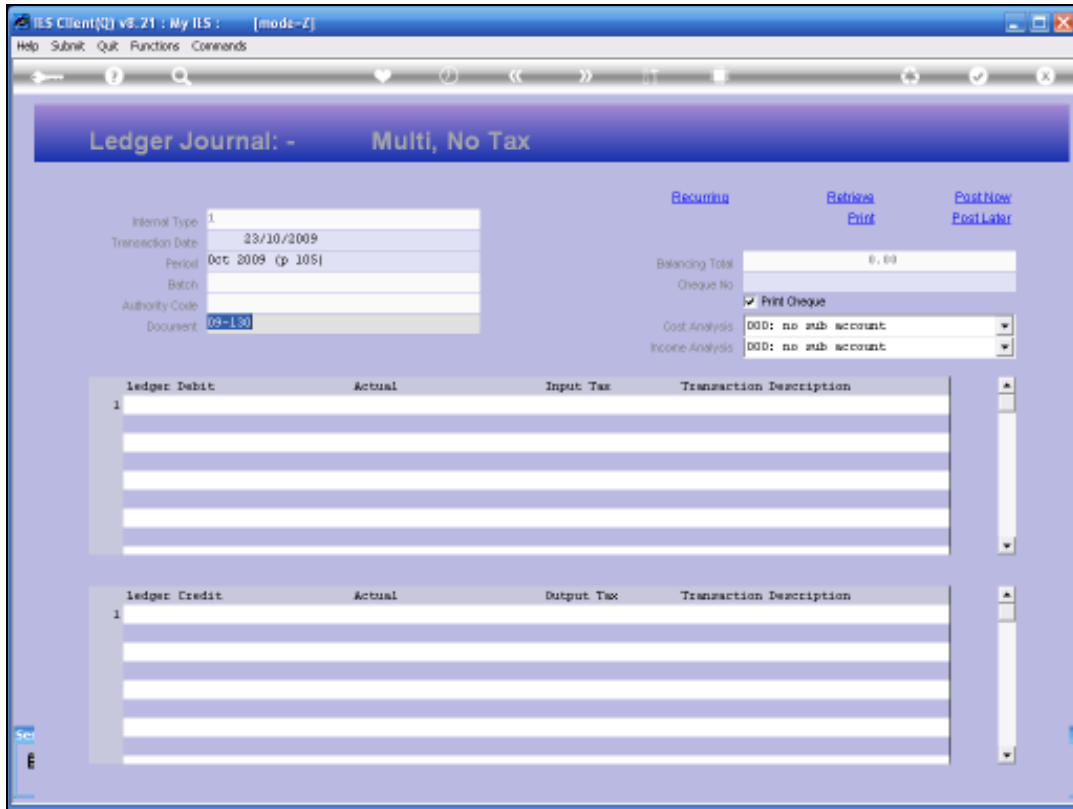


Slide 1

Slide notes: When is a Batch Number captured and when not? On the current screen, if we try to go past the Batch Number field, we cannot, because the Batch Number is forced and must be captured before we can move to the next field.

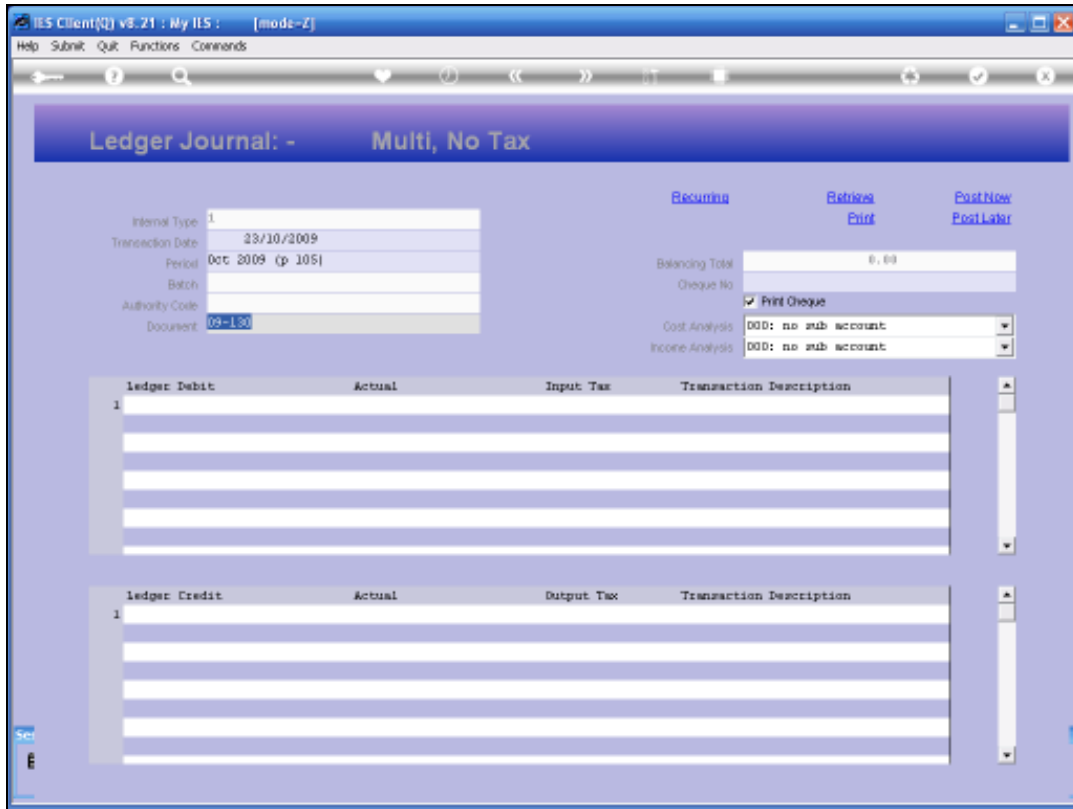


Slide 2
Slide notes:

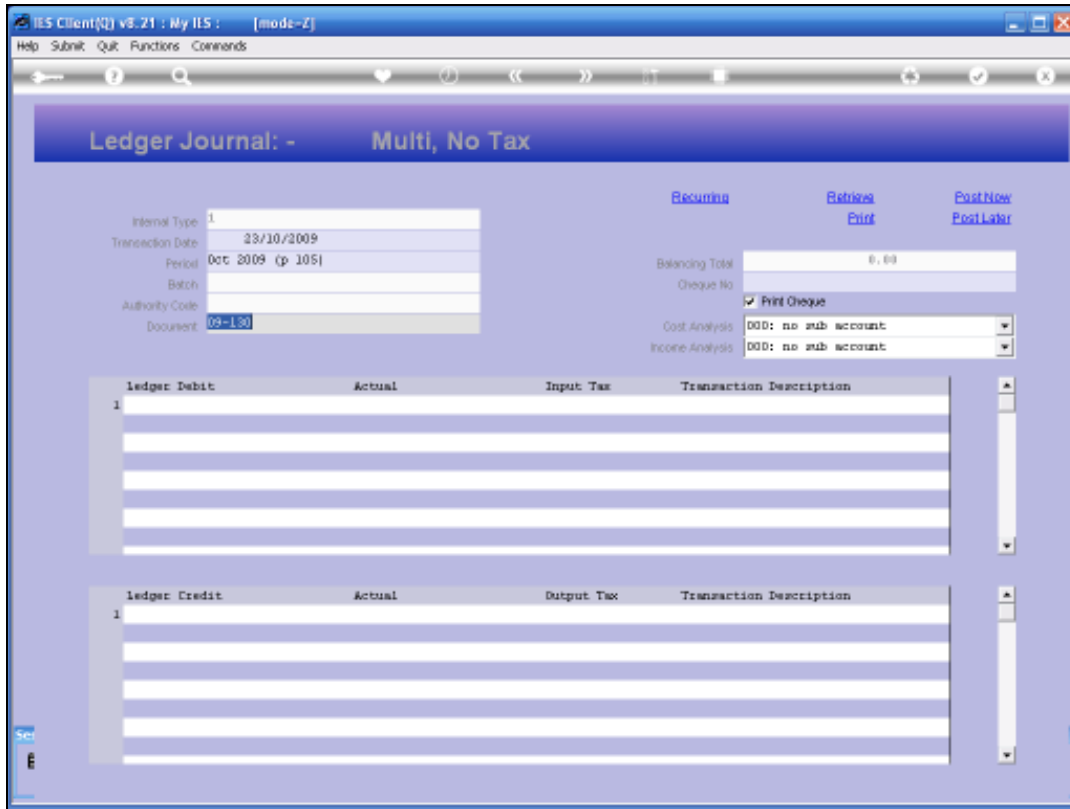


Slide 3

Slide notes: Then again, on this screen, we are already at the Document Number field, and even if we try to go to the Batch Number field, we cannot, because the field is not active now.

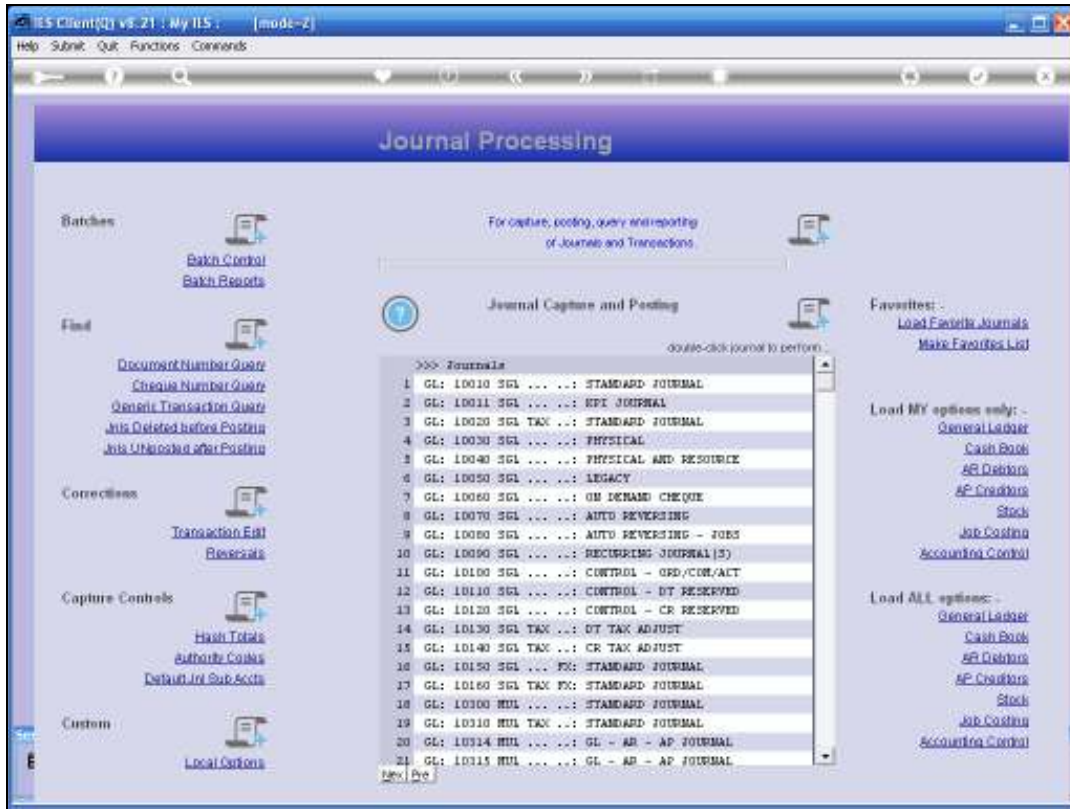


Slide 4
Slide notes:



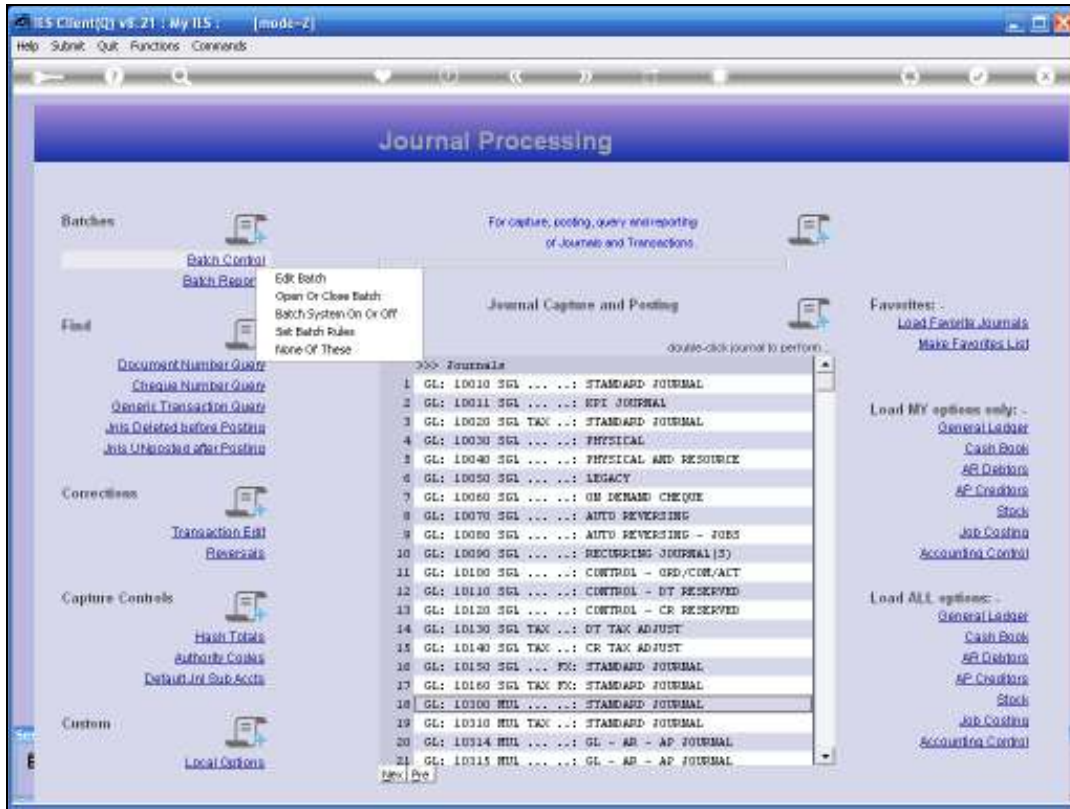
Slide 5

Slide notes: And the meaning of this is just that the Batch Number field is either forced or disallowed for a User.



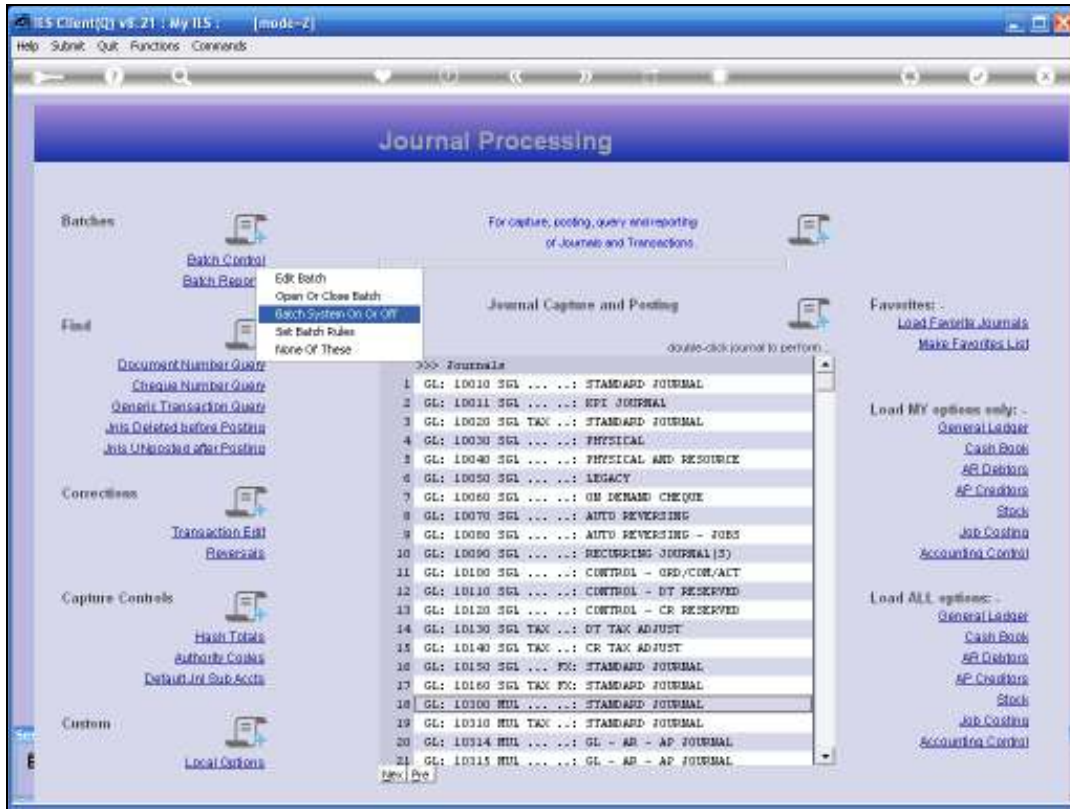
Slide 6

Slide notes: Now let's have a look at how the Batch Number system is turned On and Off.

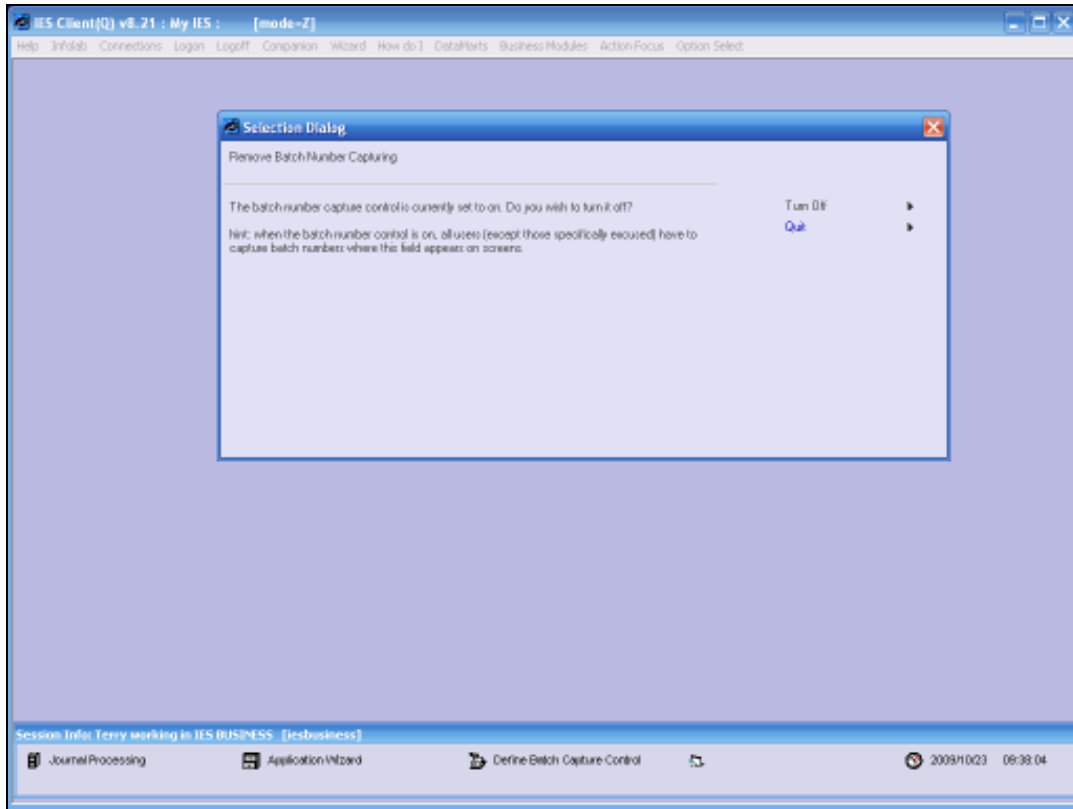


Slide 7

Slide notes: We choose the On / Off option.

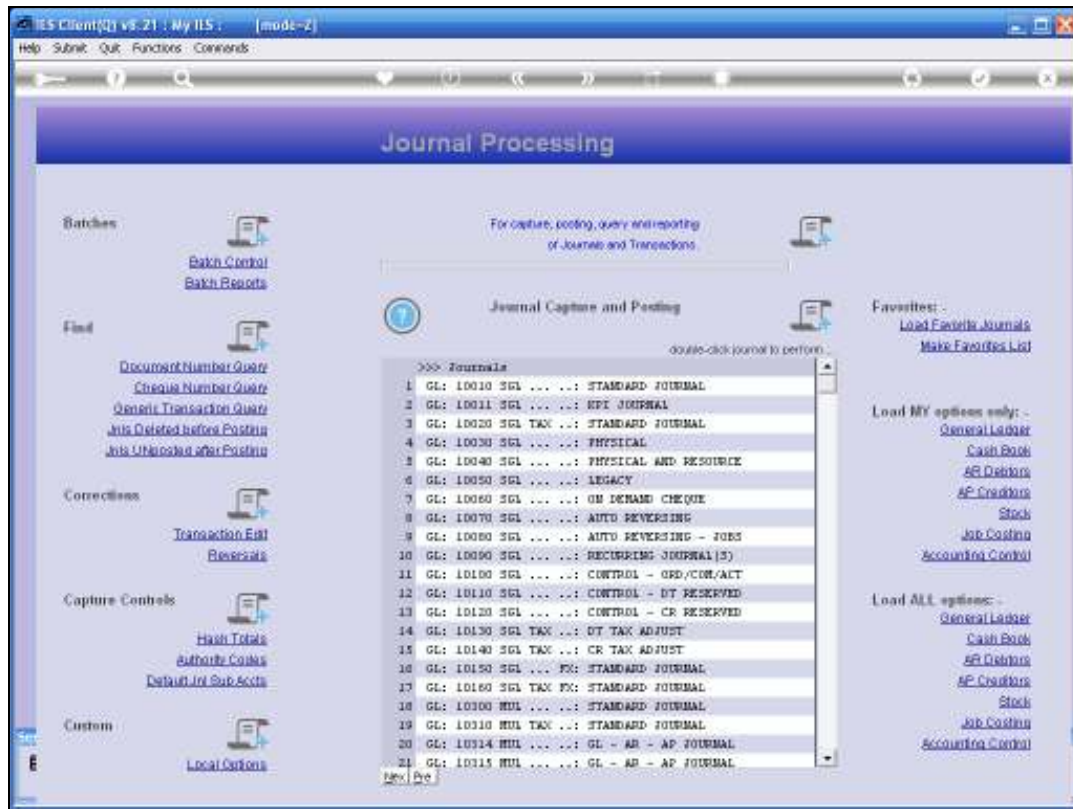


Slide 8
Slide notes:



Slide 9

Slide notes: And the system will tell us whether the Batch Number system is currently ON or OFF, and provide an option to change to the alternate state.



Slide 10

Slide notes: When the system is OFF, then no User will capture any Batch Numbers, and when it is ON, then all Users who have Batch Numbers forced on their Batch Profiles, WILL have to capture Batch Numbers.