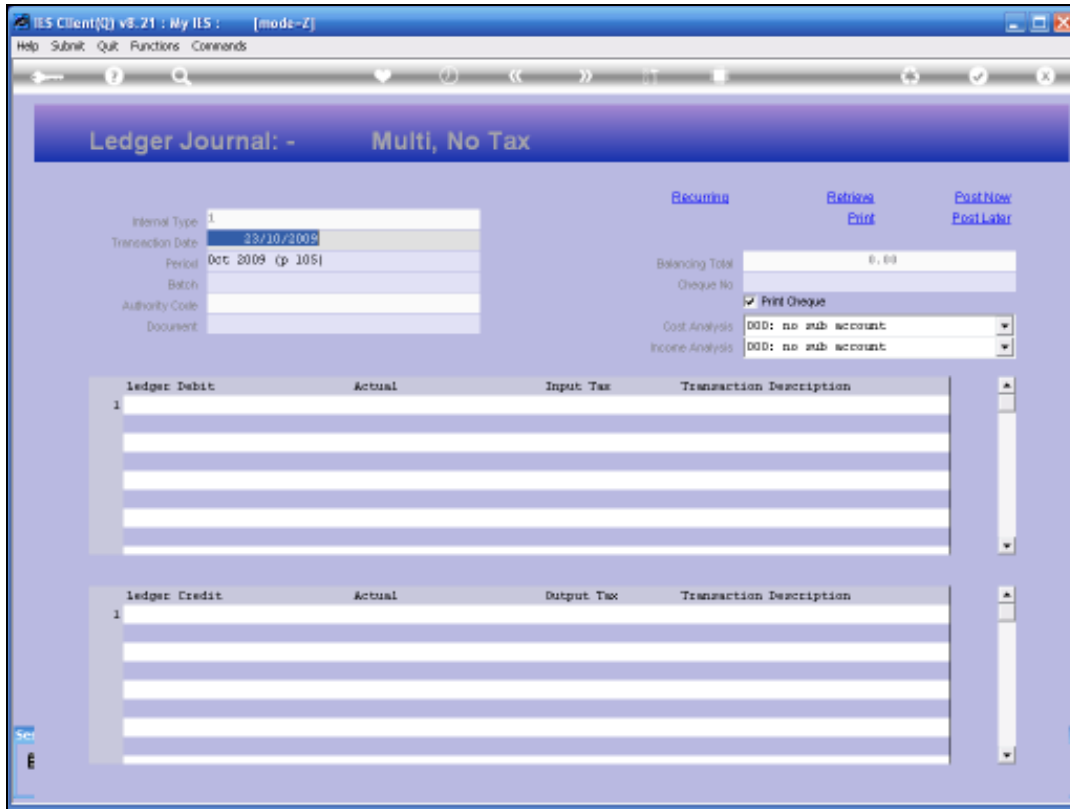


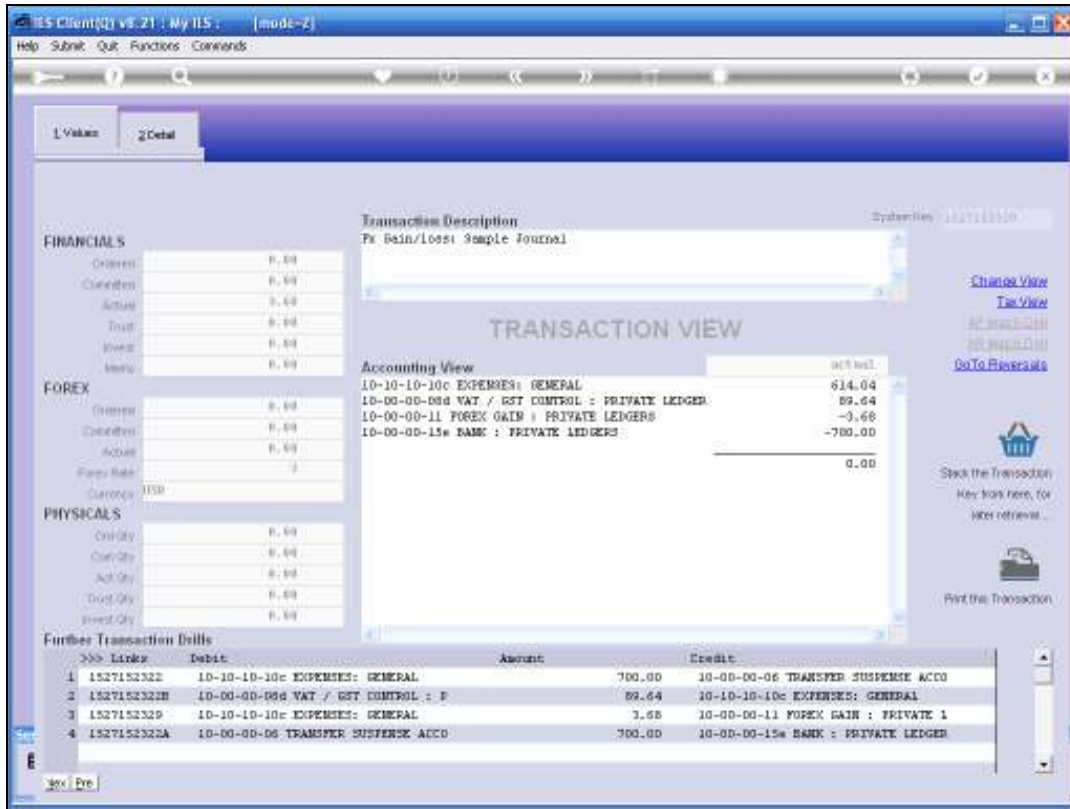
Slide 1

Slide notes: Batch Numbers are optional to use in IES. The Batch Number field on a Journal is, however, an extension of the traditional Batch Number concept as found in many systems, because the Batch Numbering function is much more flexible. The Batch Number field is found on all Journal Screens, but can be turned ON and OFF for the entire system, or selectively by User.



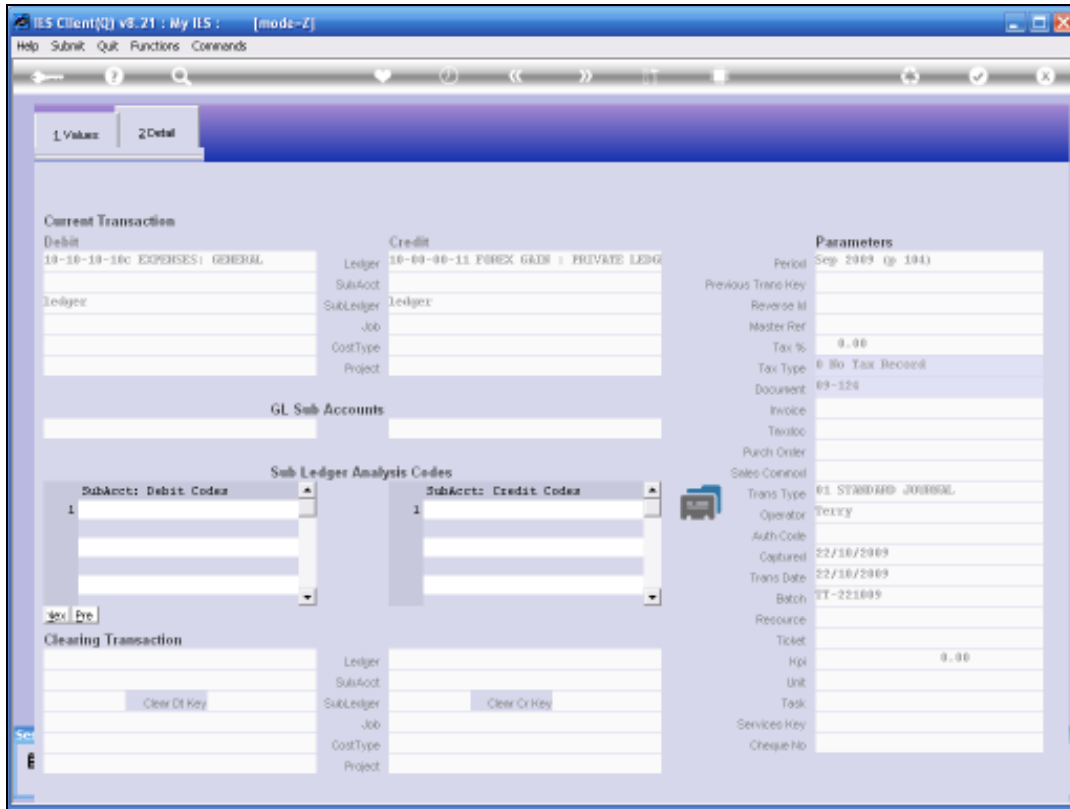
Slide 2

Slide notes: Batches do not have to balance before posting, and any Journal that is part of a Batch Number series can be posted regardless of whether the Batch is currently balancing or not. In fact, Journals are not posted by Batch, but instead are posted individually.



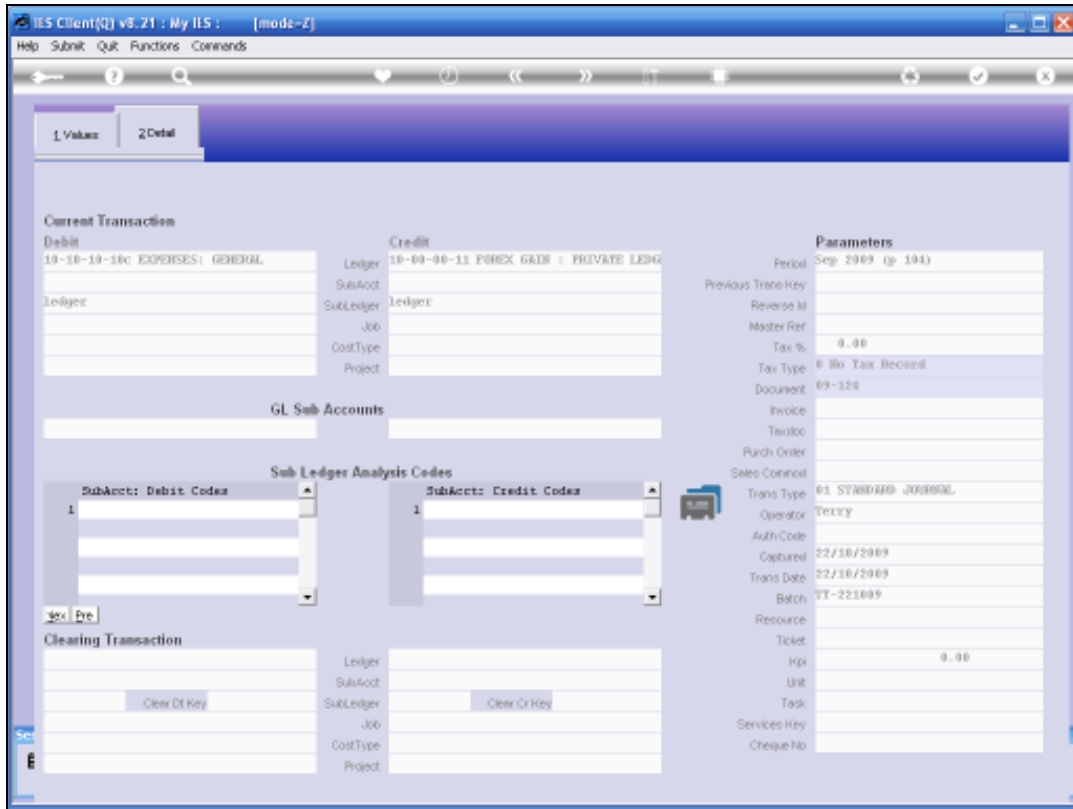
Slide 3

Slide notes: On any Transaction Drill where we can find the detail of a Journal, or the Transactions that are included in that Journal, and in all cases, we can see whether a Batch Number is present or not.



Slide 4

Slide notes: In this case, there is a Batch Number present.



Slide 5

Slide notes: An easy way to understand Batch Numbers on IES Journals, is to think of it as a management flag on Journals. It can be present or absent. As we will see in other tutorials on Batch Numbers, we can report on selected Batch Ranges to check for balancing and unbalancing Batches, as needed. We can also apply rules as to the numbering of Batches, if needed, and Batches can span many days, even weeks or a month if necessary. The Batch Number on an IES Journal is certainly recommended for use, because it is a powerful retrieval and reporting tool.