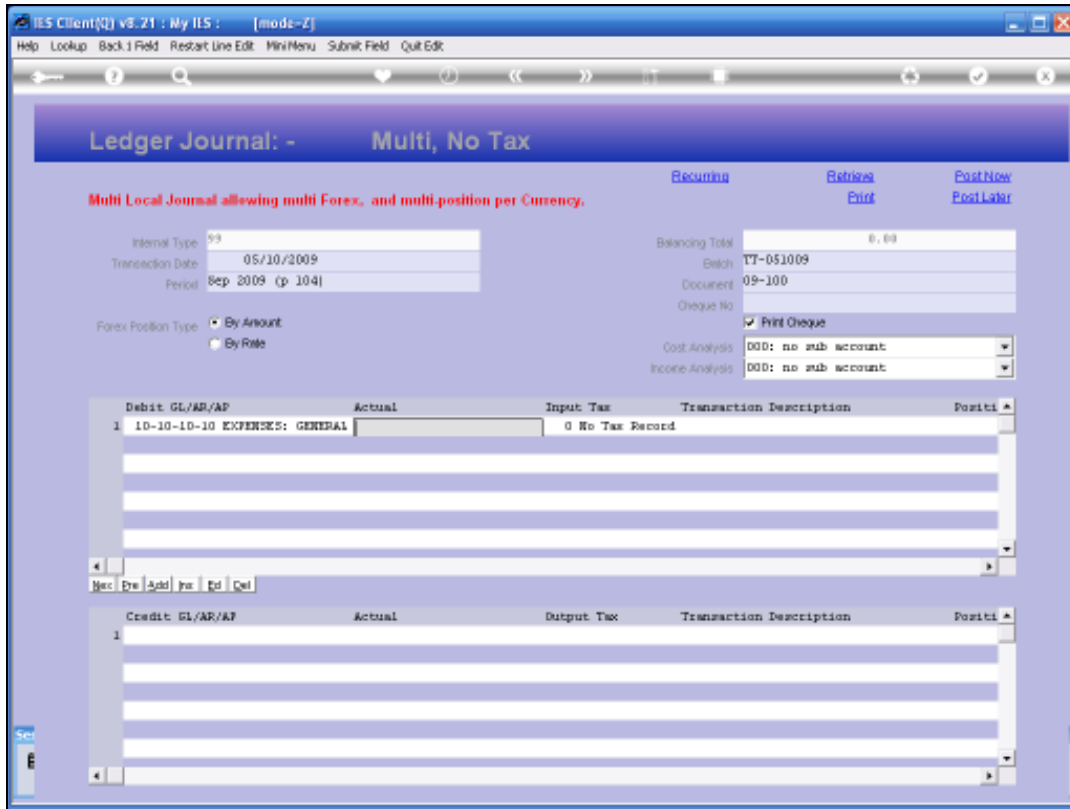
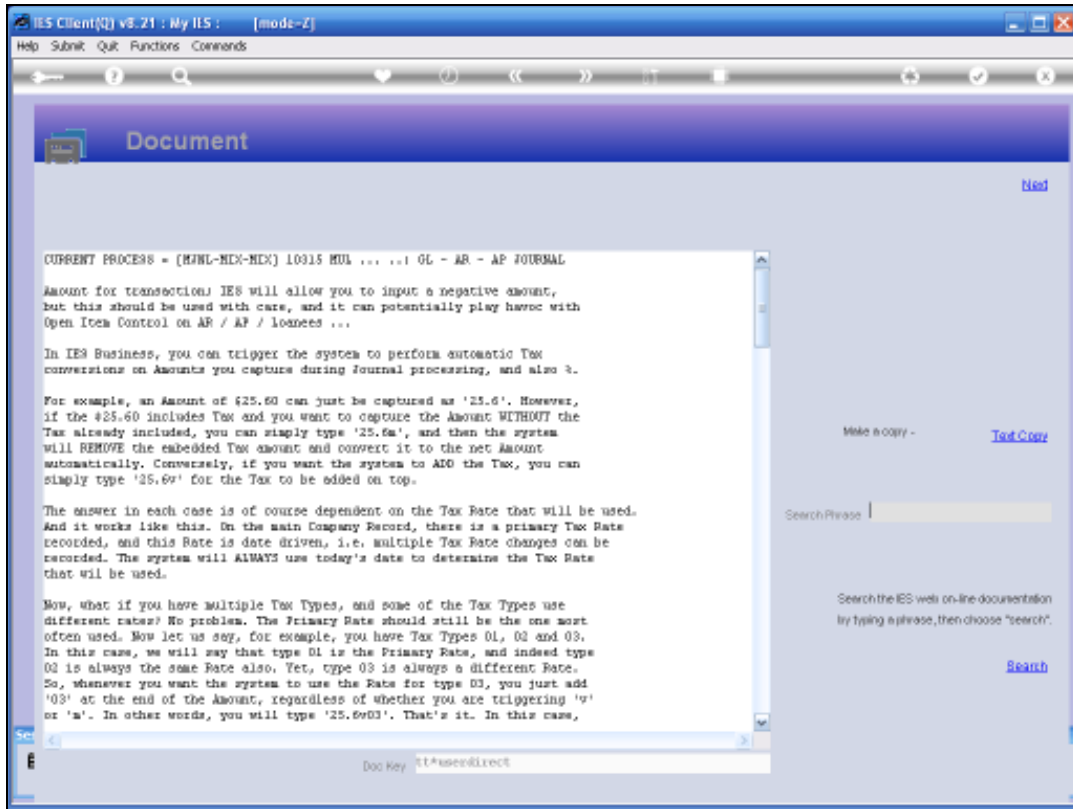


Slide 1

Slide notes: We capture Amounts on all Journals. The Amount fields allow entering of Financial Values in a supportive way.

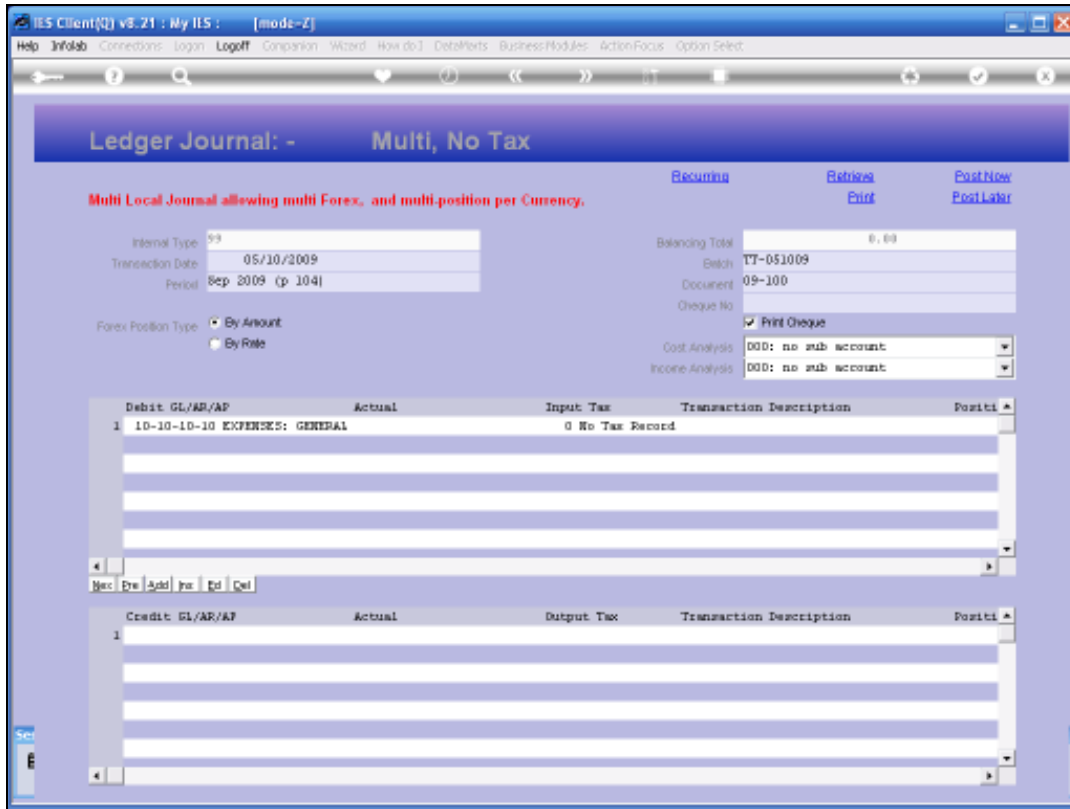


Slide 2
Slide notes:



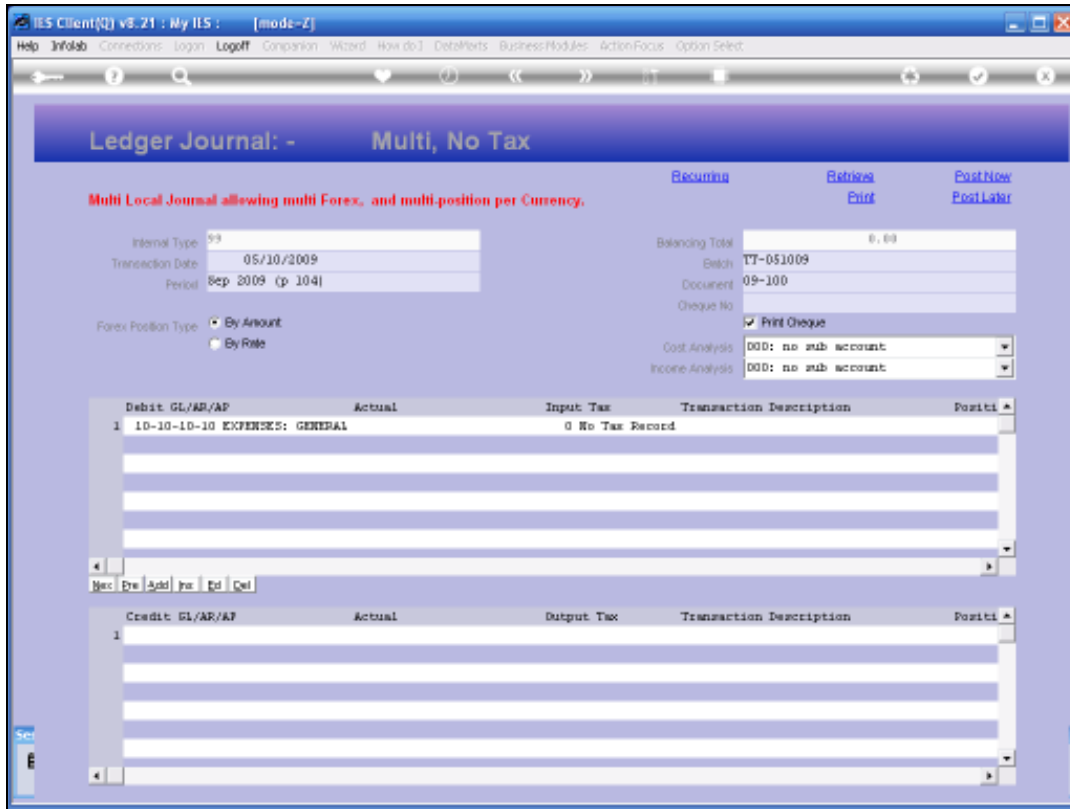
Slide 3

Slide notes: The Help on the Amount Field gives some insight as to how Amount Fields are treated.



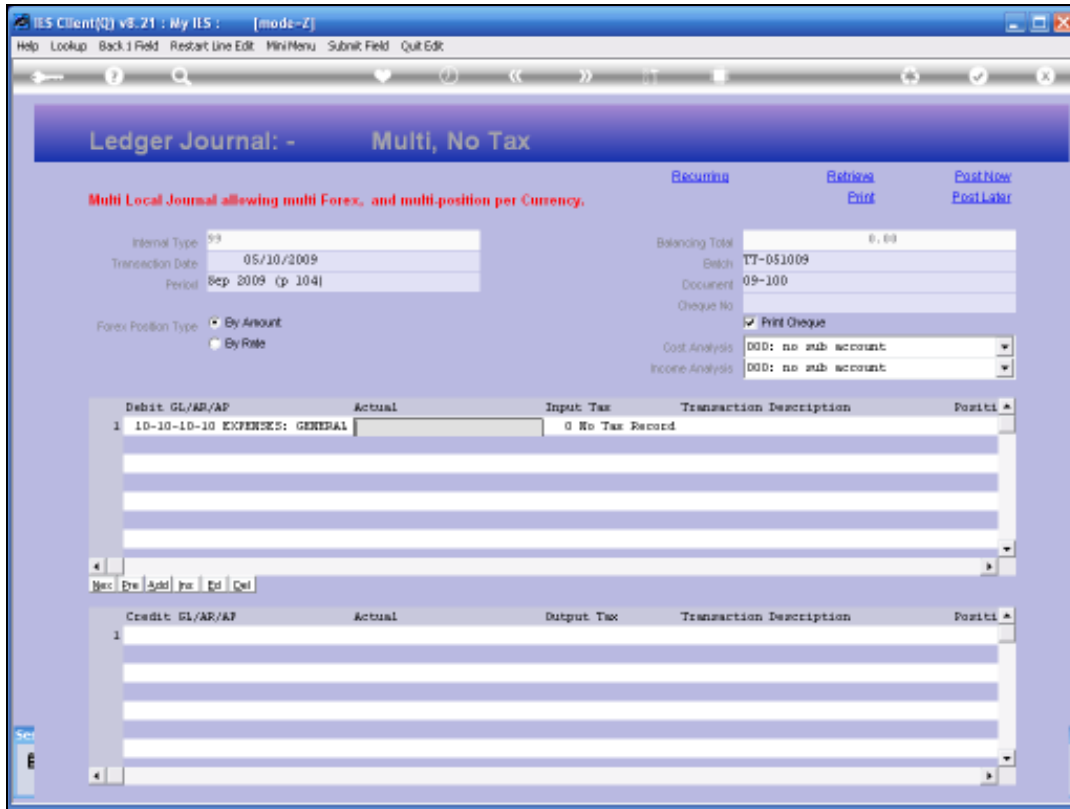
Slide 4

Slide notes: Essentially, we do not have to capture the decimal unless there is a need.

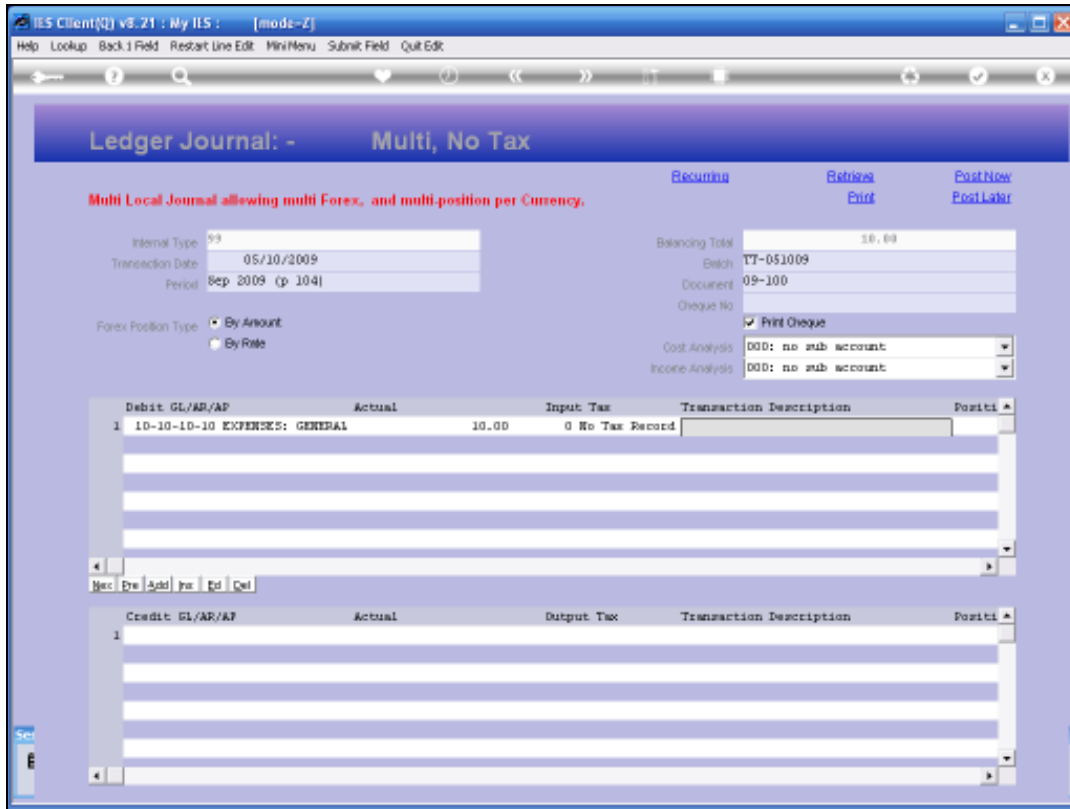


Slide 5

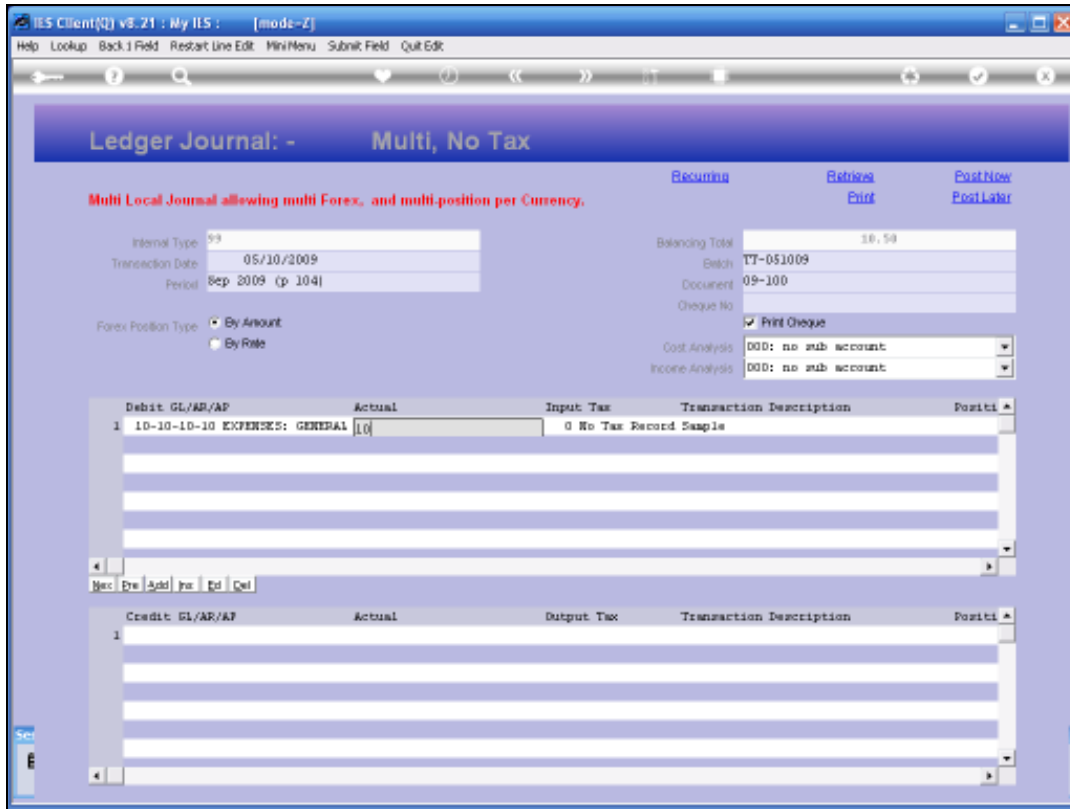
Slide notes: In other words, 10 will be the same as 10.00.



Slide 6
Slide notes:

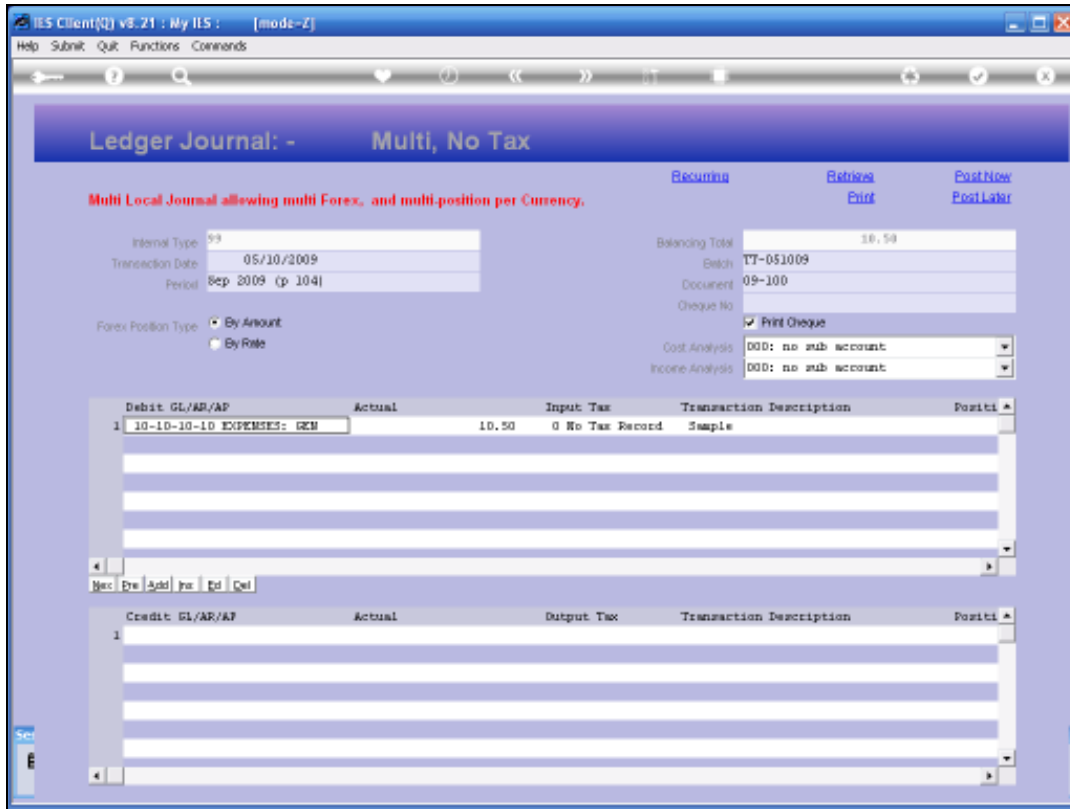


Slide 7
Slide notes:

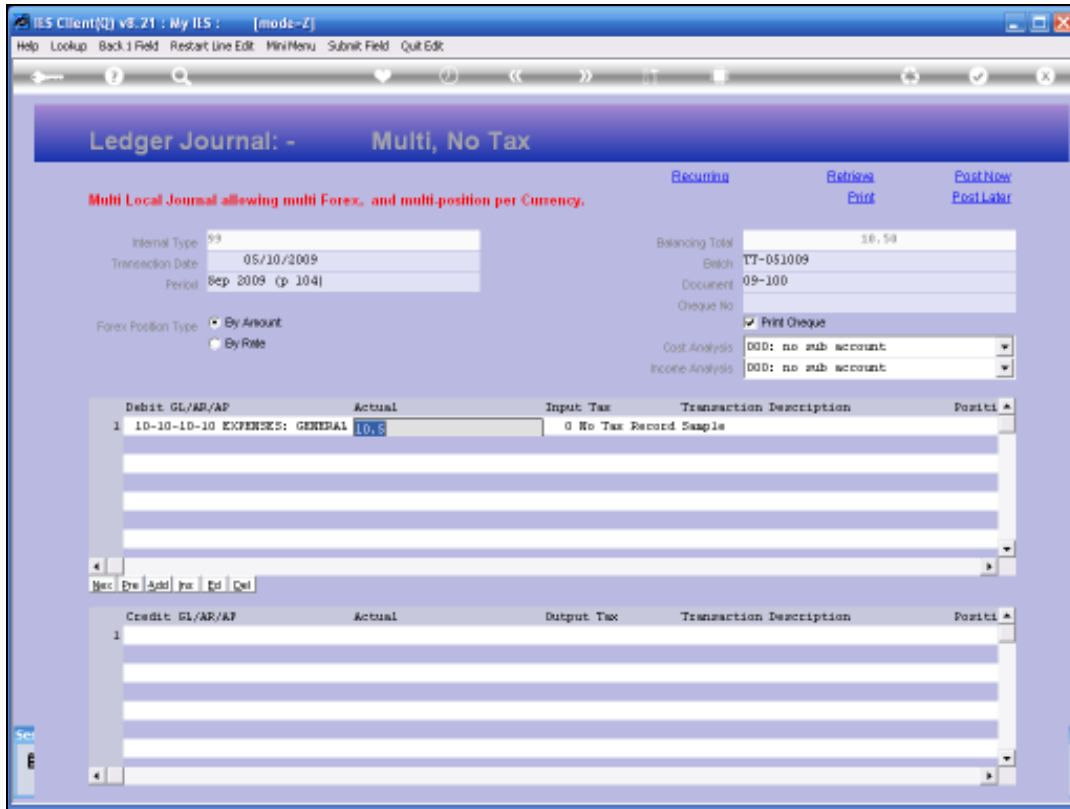


Slide 8

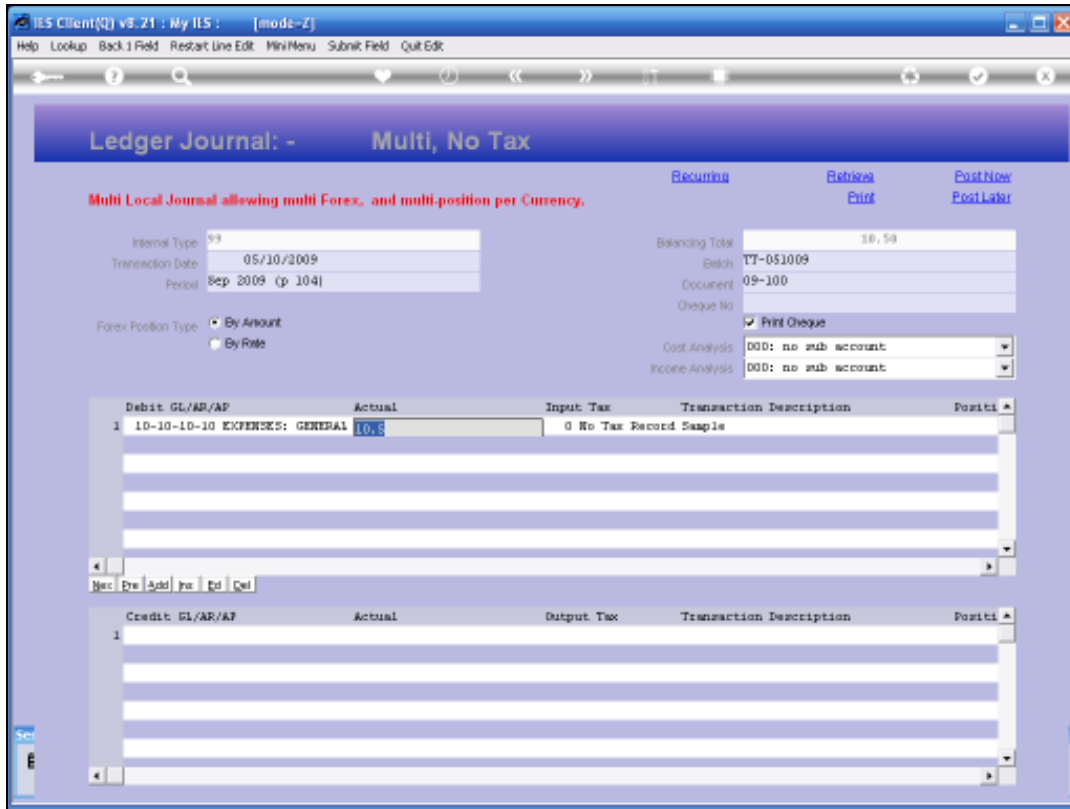
Slide notes: And 10.5 will be the same as 10.50.



Slide 9
Slide notes:

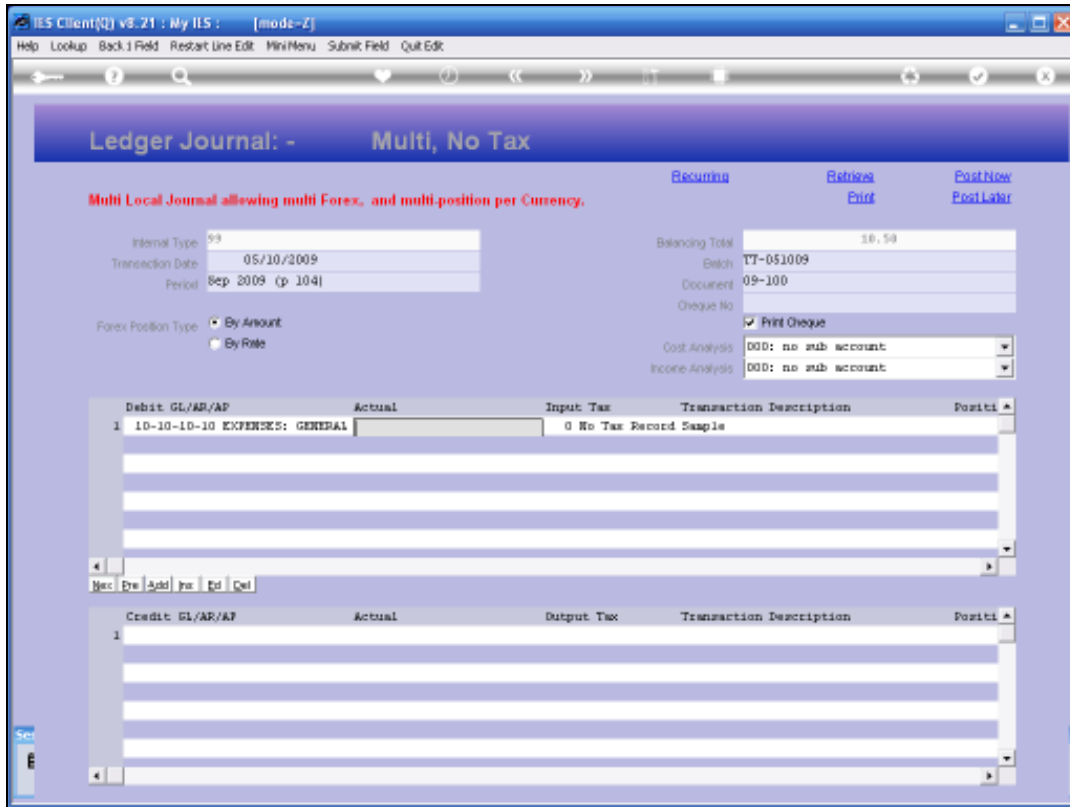


Slide 10
Slide notes:



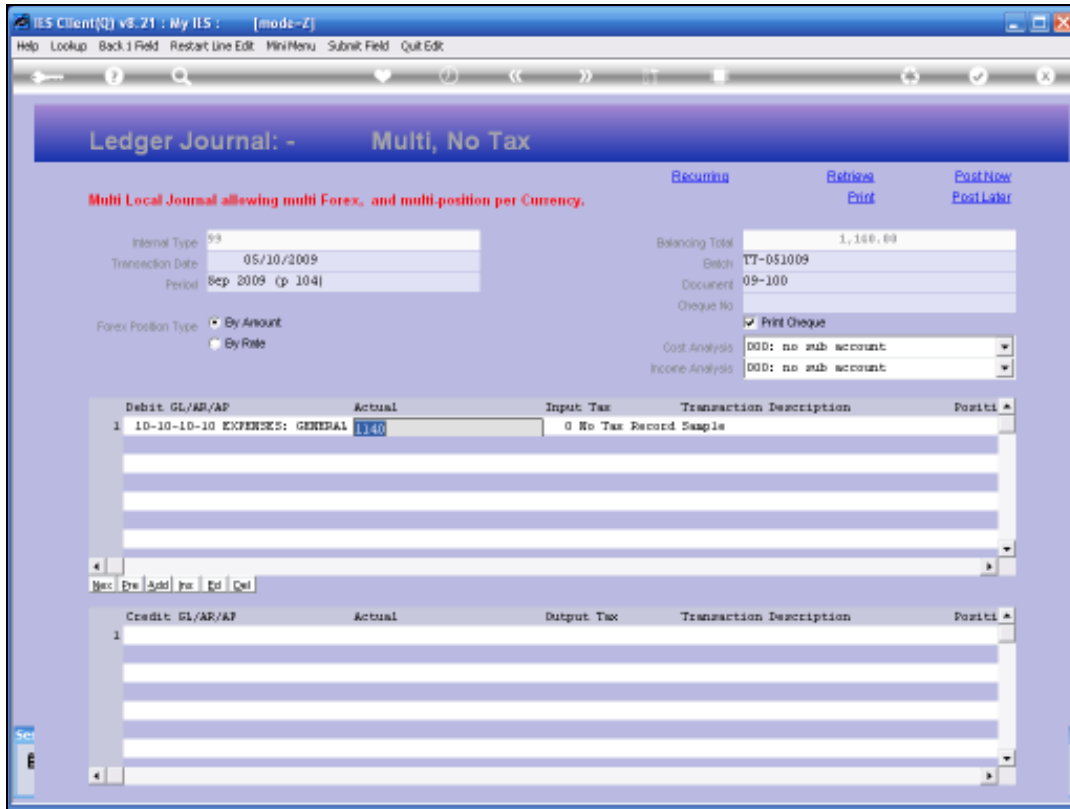
Slide 11

Slide notes: And we can automatically add VAT or TAX at the prevailing percentage by ending on the character "v".



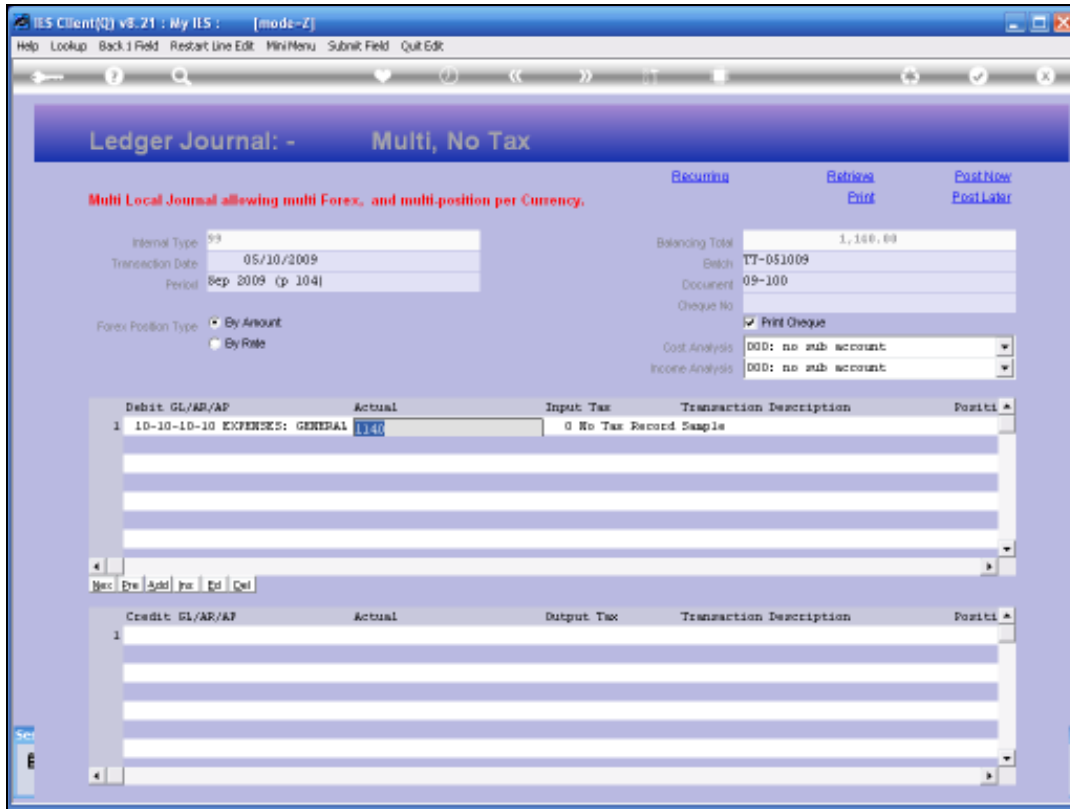
Slide 12

Slide notes:



Slide 13

Slide notes: So the system will convert the captured amount of 1,000 to 1,140, based on the current Tax rate.



Slide 14

Slide notes: We can even remove an inclusive Tax component by ending on the character 'm'. In this case, the system removes the Tax and reduces the amount accordingly. We note though that final amounts processed on Journals are ALWAYS Tax INCLUSIVE amounts.

The screenshot shows the IES Client interface for a 'Ledger Journal: - Multi, No Tax'. The window title is 'IES Client(0) v8.21 : My IES : [mode-Z]'. The interface includes a menu bar (Help, Submit, Quit, Functions, Commands) and a toolbar with navigation icons. The main content area has a purple header and contains the following elements:

- Multi Local Journal allowing multi Forex, and multi-position per Currency.**
- Form Fields:**
 - Internal Type: 99
 - Transaction Date: 05/10/2009
 - Period: Sep 2009 (p 104)
 - Forex Position Type: By Amount, By Rate
 - Batch: TT-051009
 - Document: 09-100
 - Cost Analysis: 000: no sub account
 - Income Analysis: 000: no sub account
- Buttons:** Recuring, Retrieve, Print, Post New, Post Later
- Table 1: Debit GL/AR/AP**

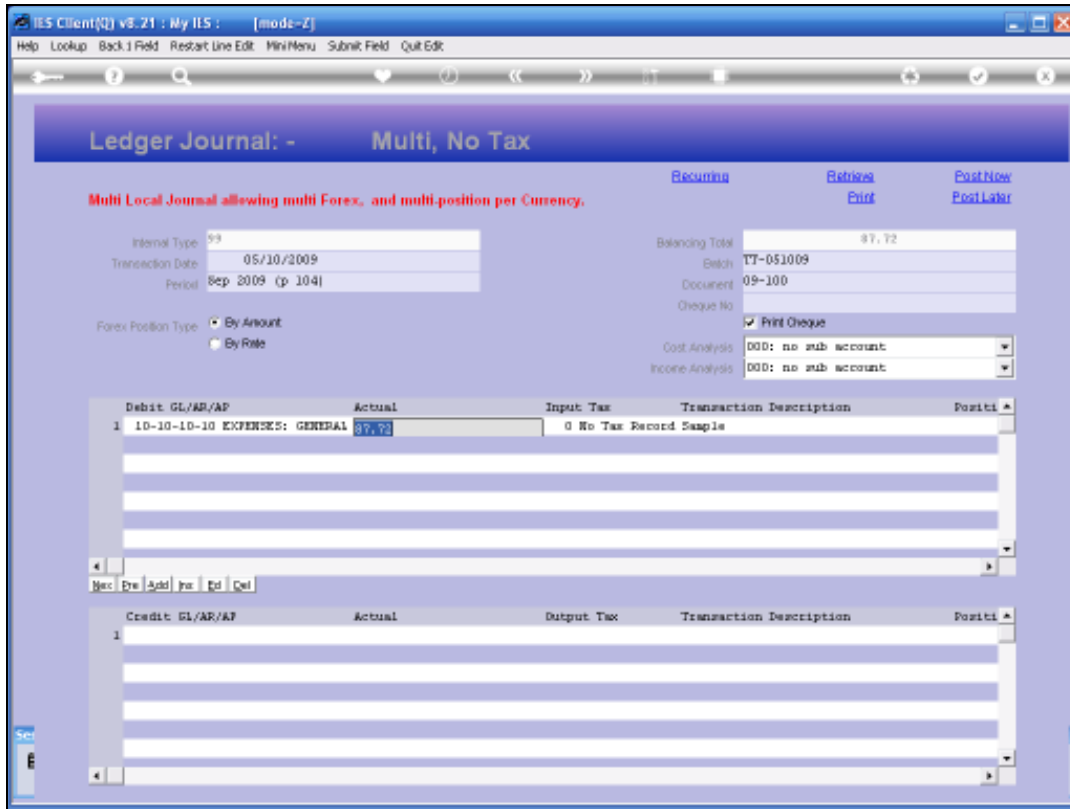
Debit GL/AR/AP	Actual	Input Tax	Transaction Description	Positi
1 10-10-10 EXPENSES: GEN	87.72	0 No Tax Record	Sample	

Below the table is a navigation bar with buttons: New, Prev, Add, Ins, Del, Del.

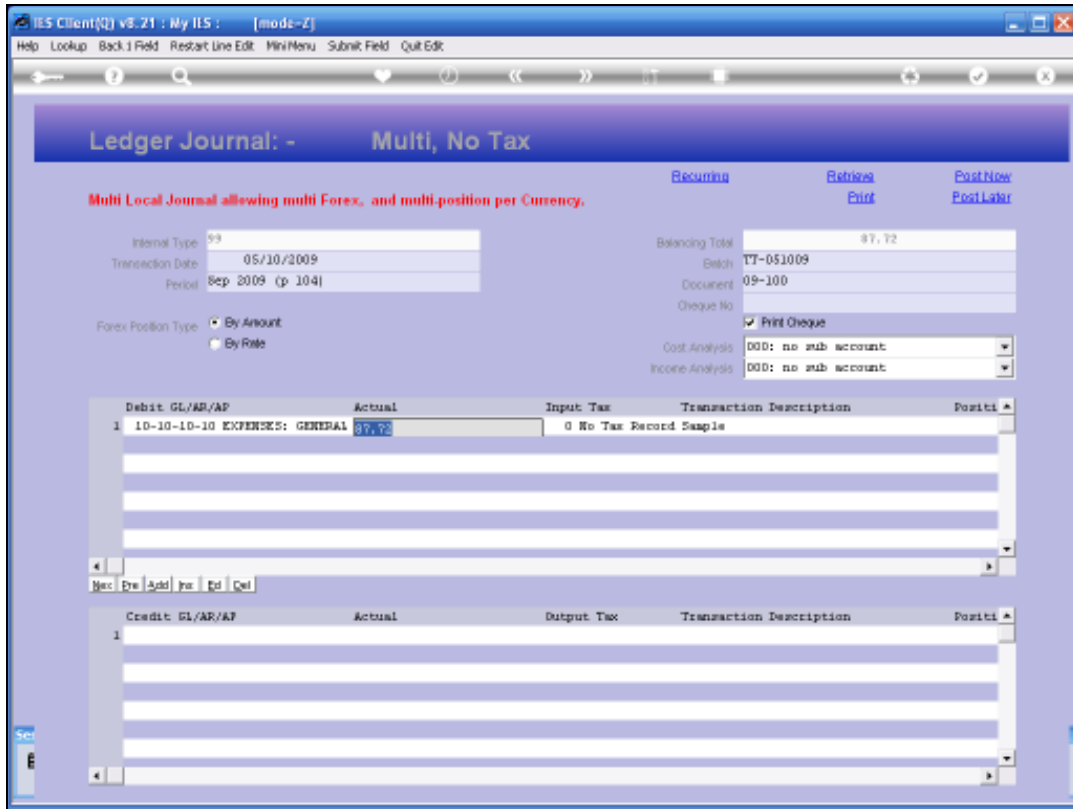
- Table 2: Credit GL/AR/AP**

Credit GL/AR/AP	Actual	Output Tax	Transaction Description	Positi

Slide 15
Slide notes:

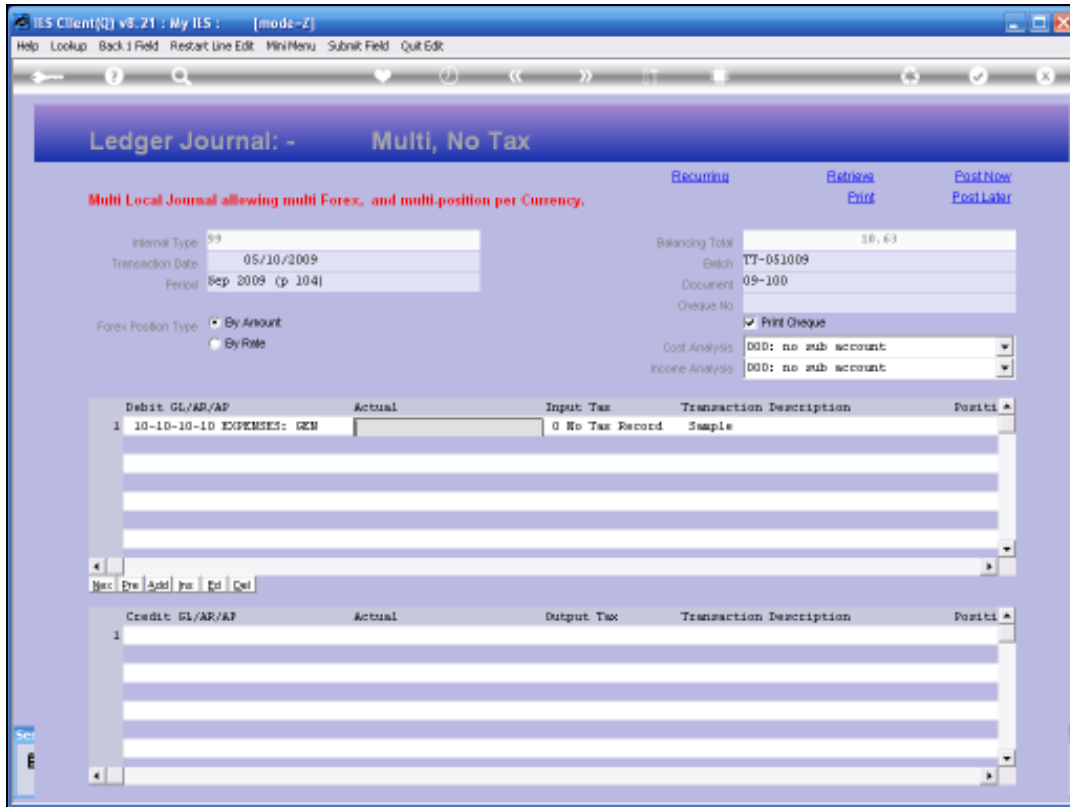


Slide 16
Slide notes:



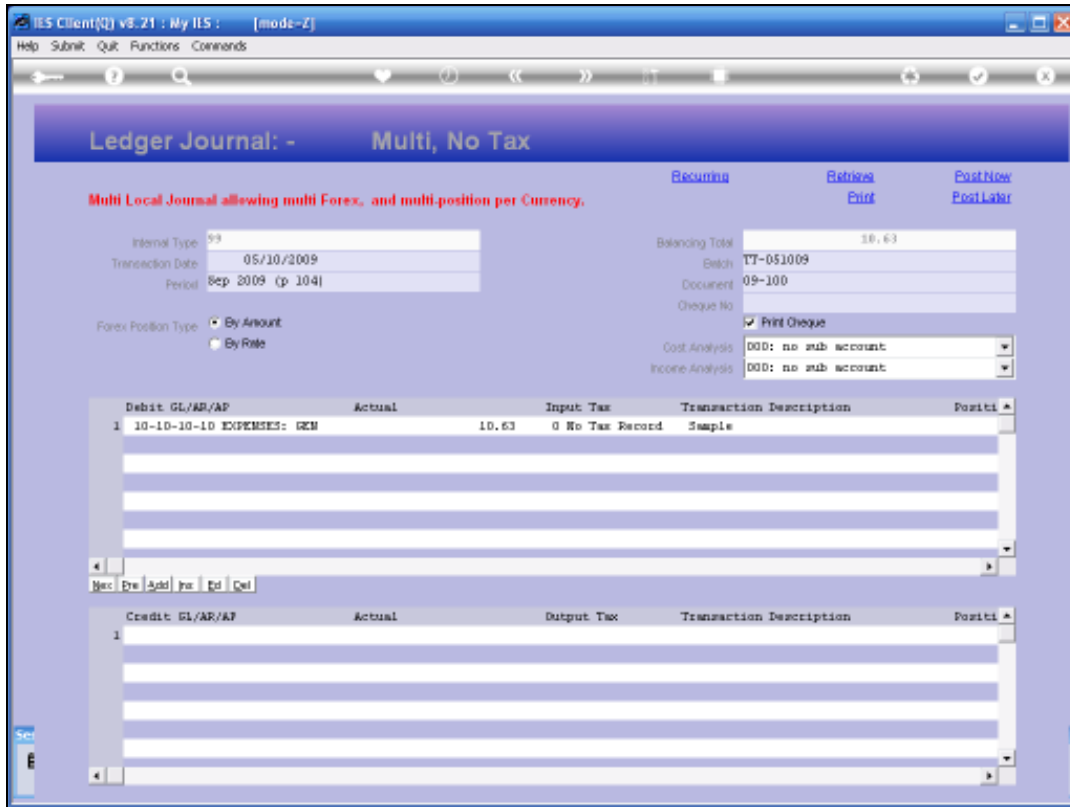
Slide 17

Slide notes: The system will also automatically return a calculated percentage of the amount captured, if we end on the '%' character, followed by the percentage to apply.



Slide 18

Slide notes:



Slide 19

Slide notes: And the amount has now changed to 10.63.