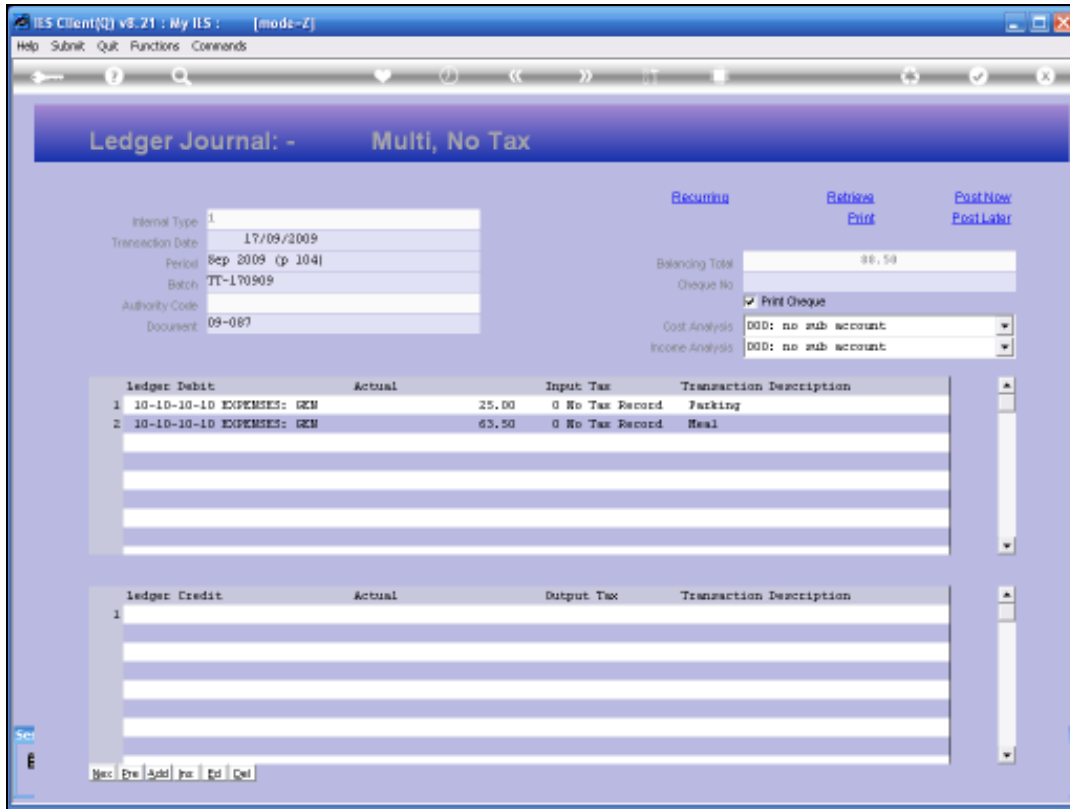


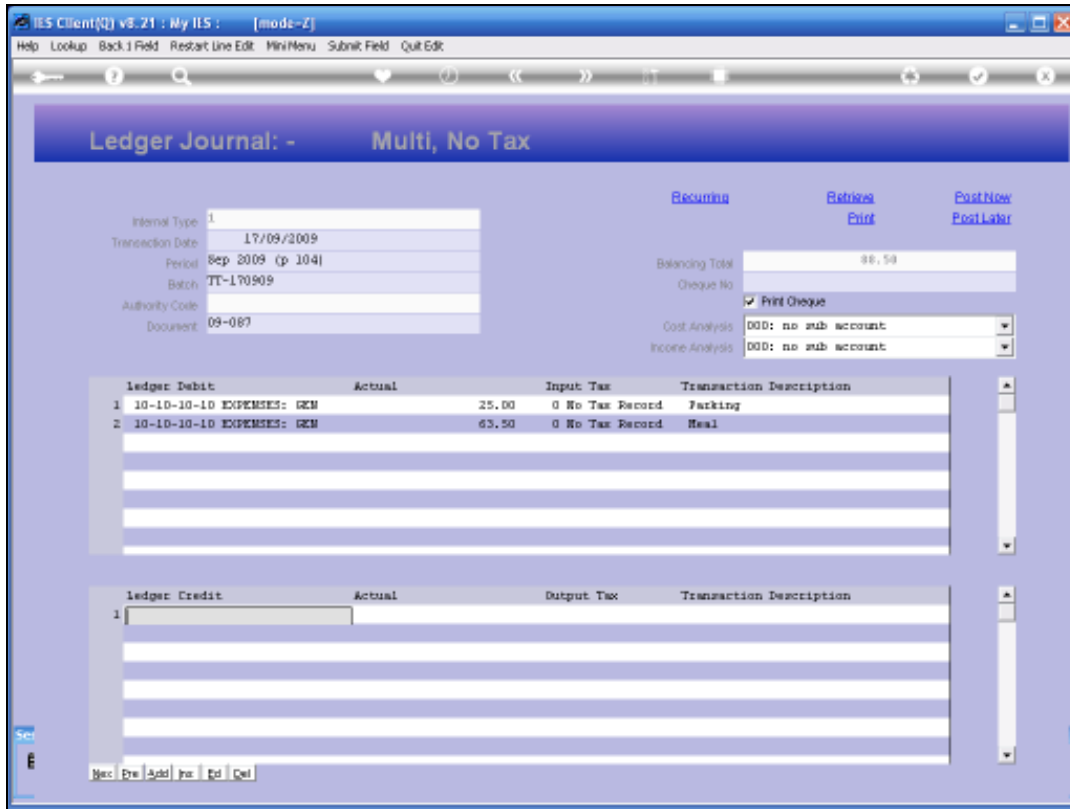
Slide 1

Slide notes: A Multi Leg Journal is a Journal type with more than just 1 Debit and 1 Credit. We will now look at an example of a Multi Leg Journal.



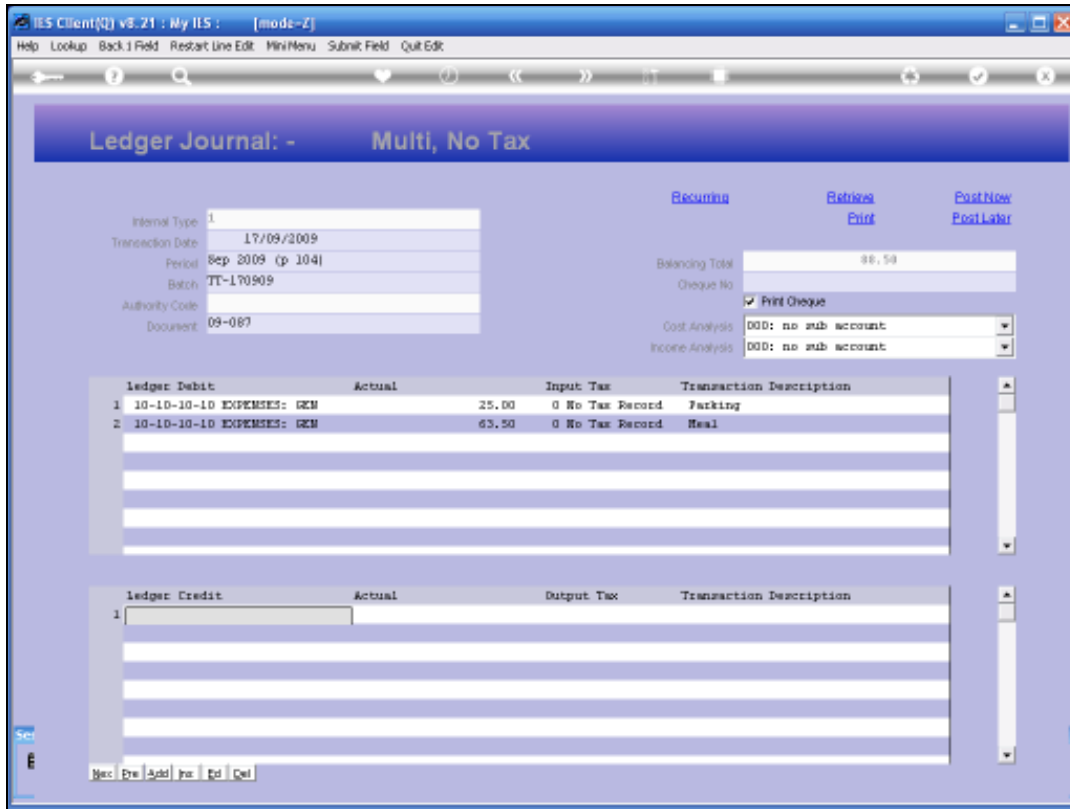
Slide 2

Slide notes: In this case, we have already recorded 2 Debits, and in this example, both debits are to the same Account, but for different expenses. Of course, the debits may also be to different Accounts, and there may be more than 2 as well.

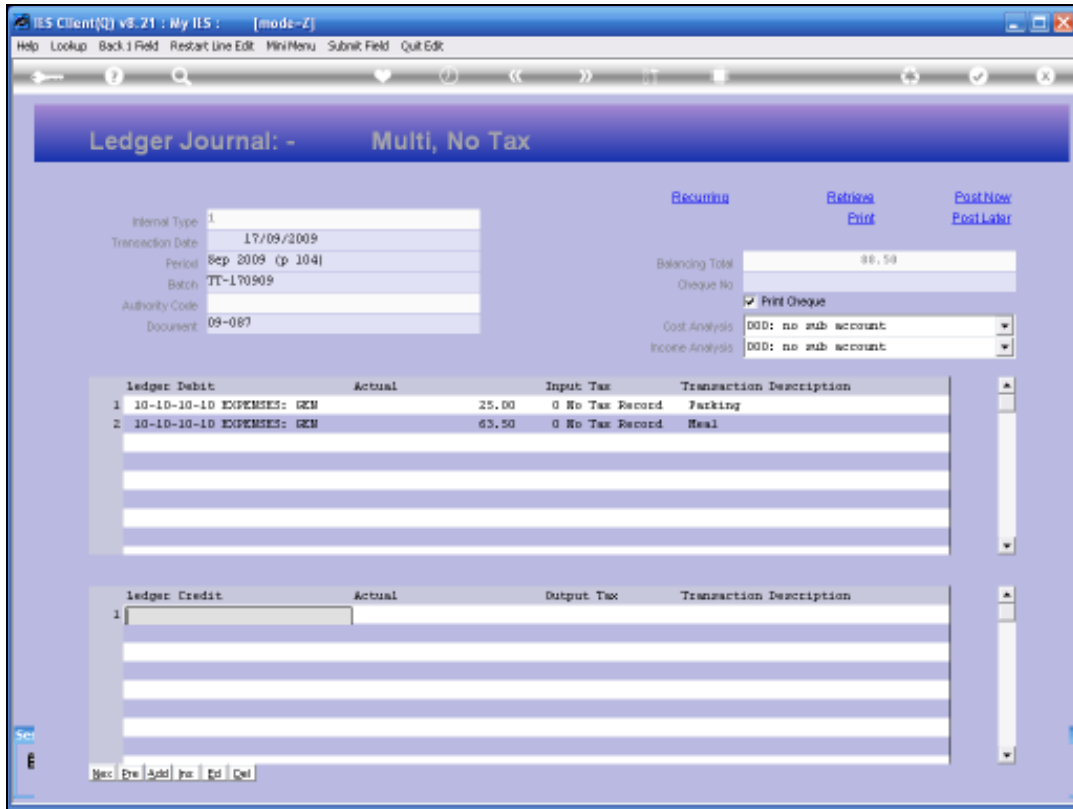


Slide 3

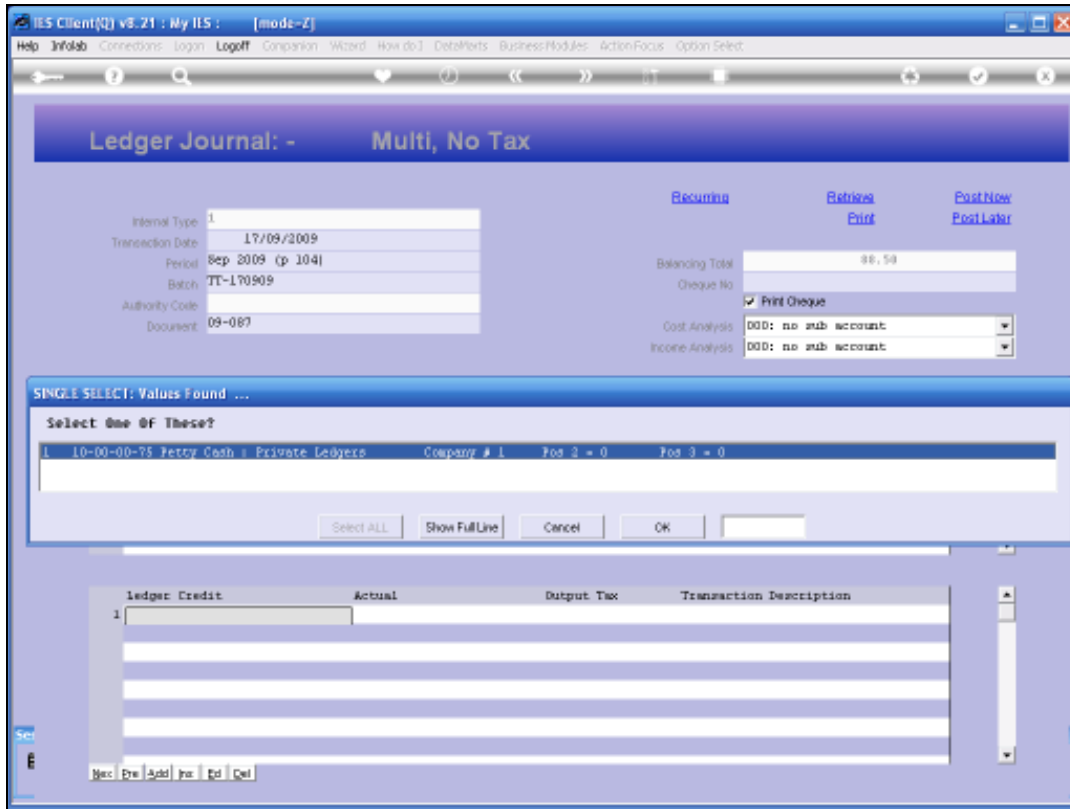
Slide notes: There can also be multiple Credits, but in this example of a Petty Expense, we will have 1 Credit only.



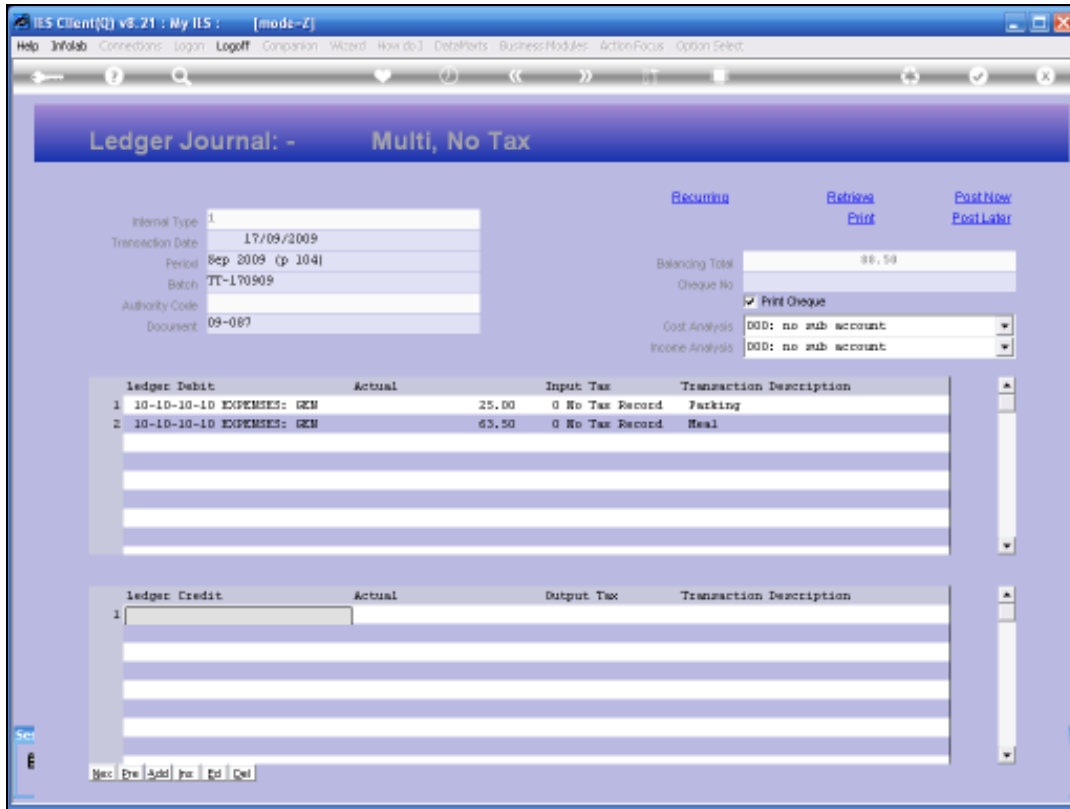
Slide 4
Slide notes:



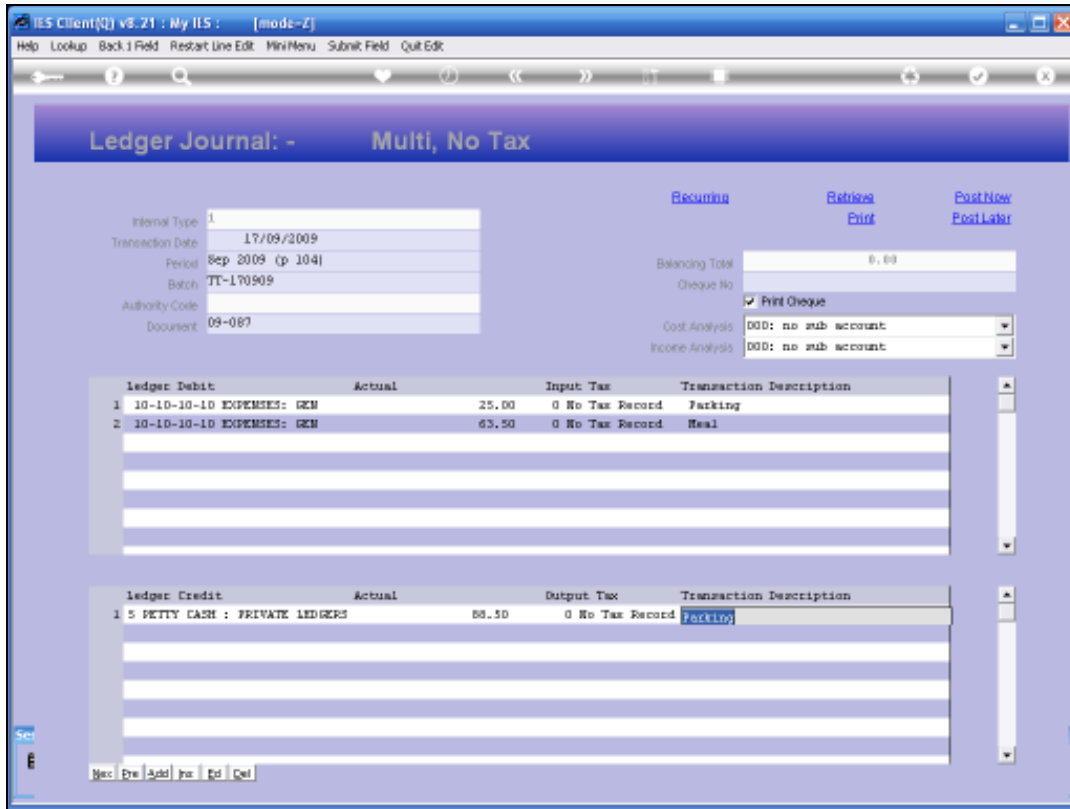
Slide 5
Slide notes:



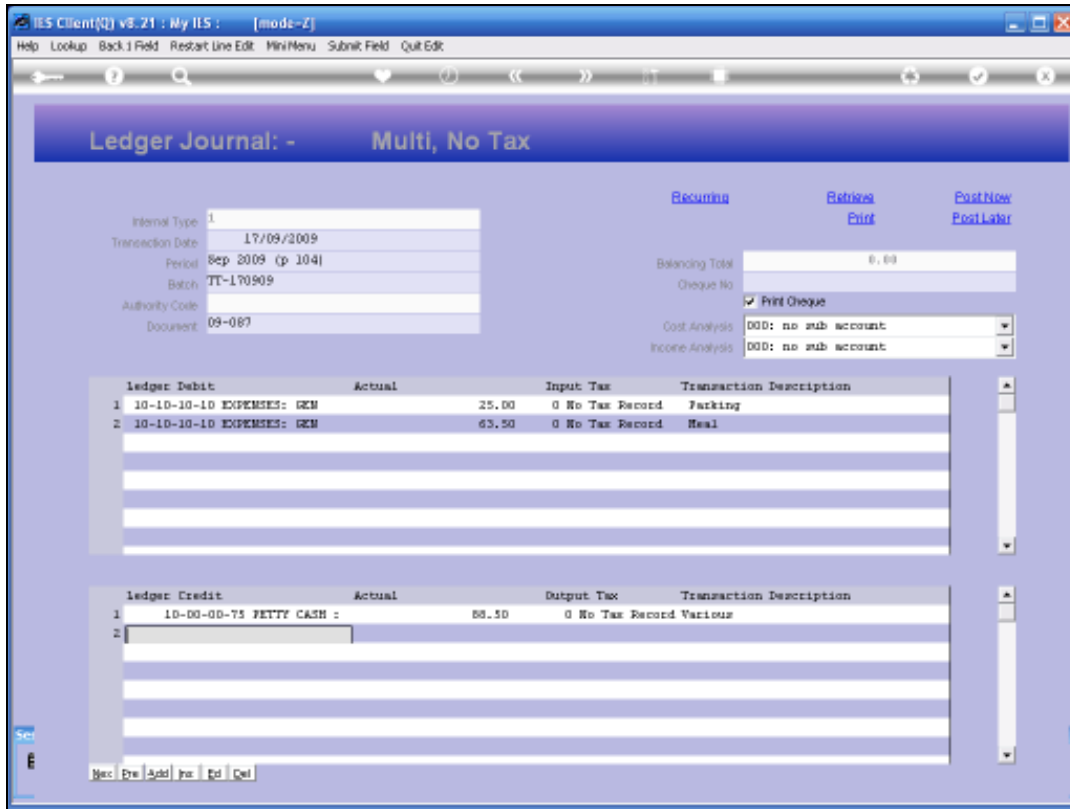
Slide 6
Slide notes:



Slide 7
Slide notes:



Slide 8
Slide notes:



Slide 9

Slide notes: And when this Journal is posted, we can clearly see the Multi Journal result.

Ledger Journal: - Multi, No Tax

Internal Type: 1
Transaction Date: 17/09/2009
Period: Sep 2009 (p 104)
Batch: IT-170909
Authority Code:
Document: 09-087

Recurring Retries PostNew
Print Print PostNew

Balancing Total: 0.00
Cheque No:
 Print Cheque
Cost Analysis: 000: no sub account
Income Analysis: 000: no sub account

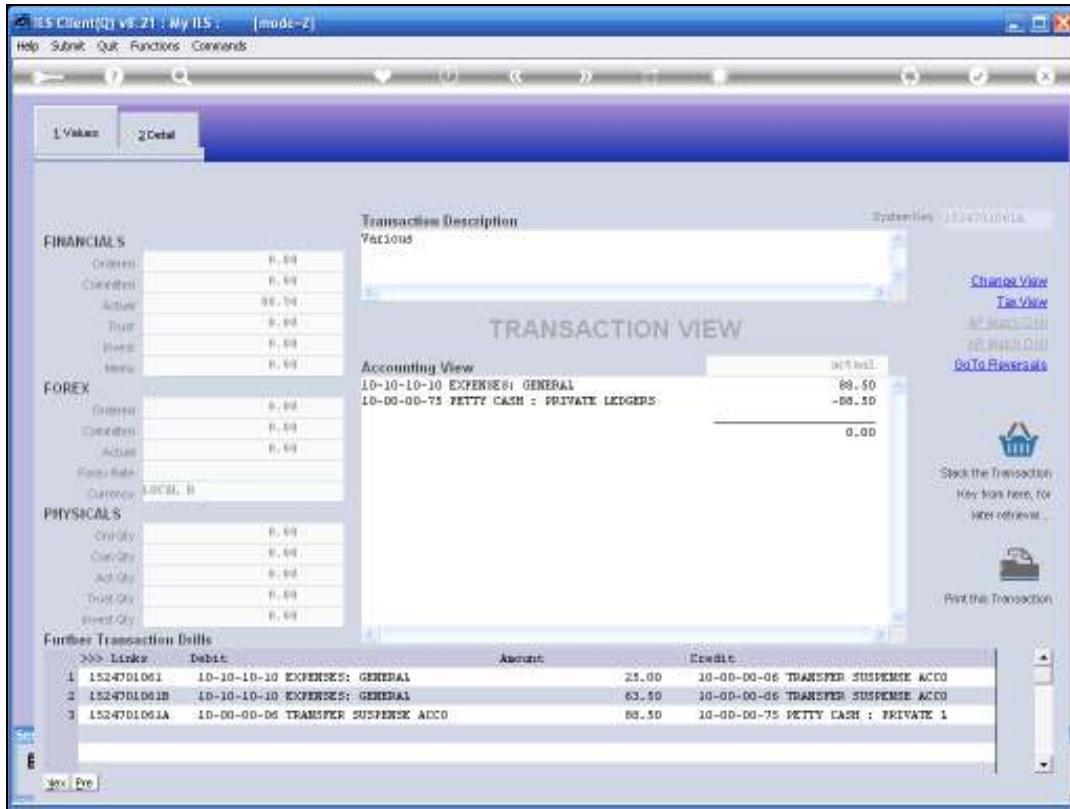
Ledger Debit	Actual	Input Tax	Transaction Description
1 10-10-10-10 EXPENSES: GEN	25.00	0 No Tax Record	Parking
2 10-10-10-10 EXPENSES: GEN	63.50	0 No Tax Record	Meal

Ledger Credit	Actual	Output Tax	Transaction Description
1 10-00-00-75 PETTY CASH :	88.50	0 No Tax Record	Various
2			

Sec E

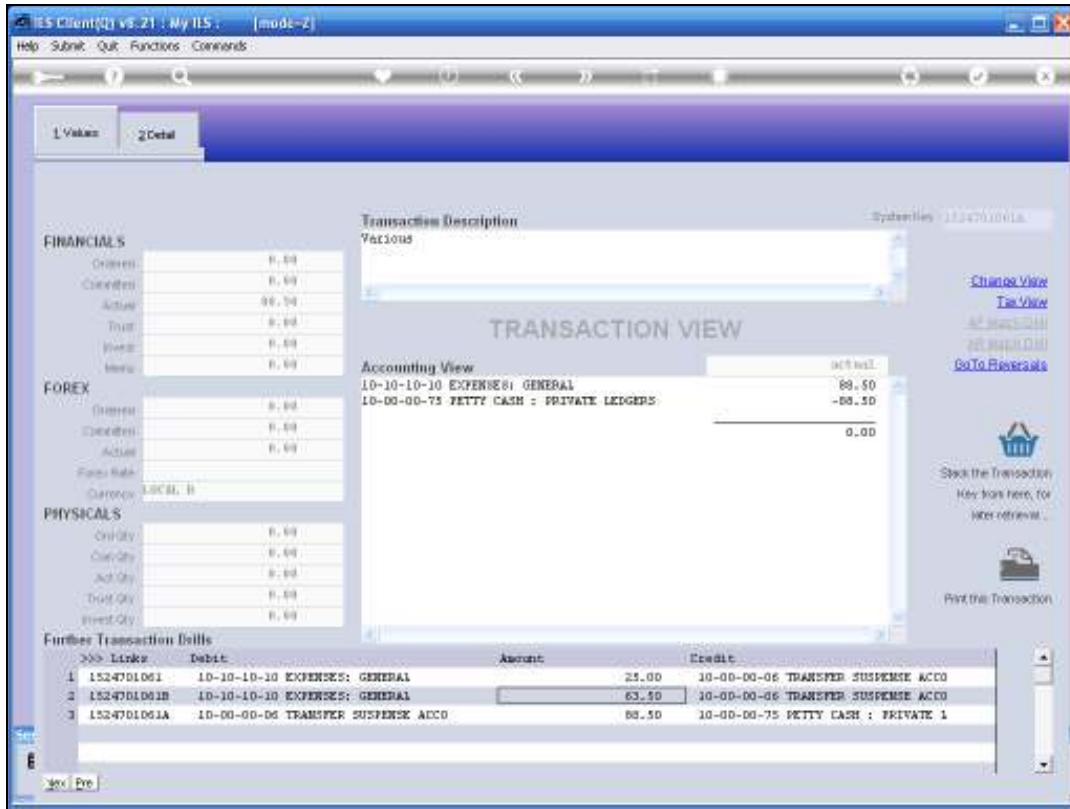
Rec | Pre | Add | Inv | Tot | Cal

Slide 10
Slide notes:



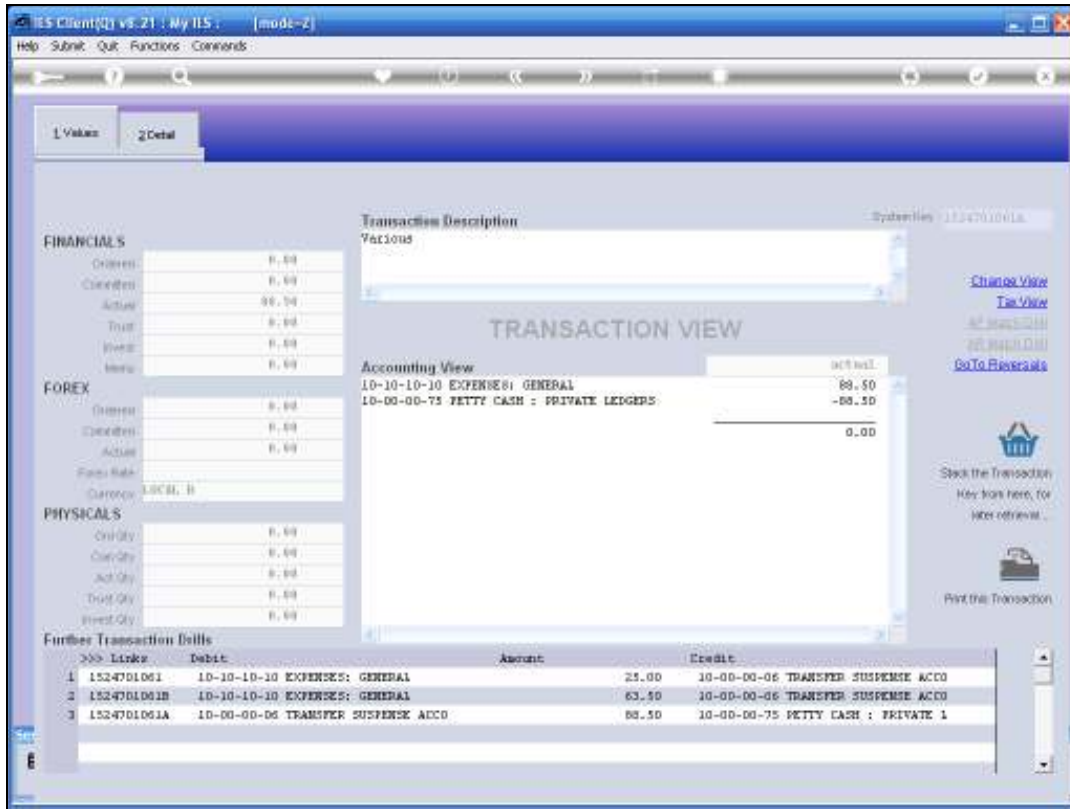
Slide 11

Slide notes: In this case, we have a result of 3 Transactions, each with a single Debit and a single Credit, and together they comprise a Multi Journal set.



Slide 12

Slide notes: The Accounting View in this case looks almost like a Single Leg Journal, but that is only because all the Debits have been to the same Account. The Transaction list clearly shows a Multi Journal set.



Slide 13

Slide notes: A Transaction is always 1 Debit and 1 Credit, and a Multi Leg Journal is a Journal with more than 1 Transaction.