

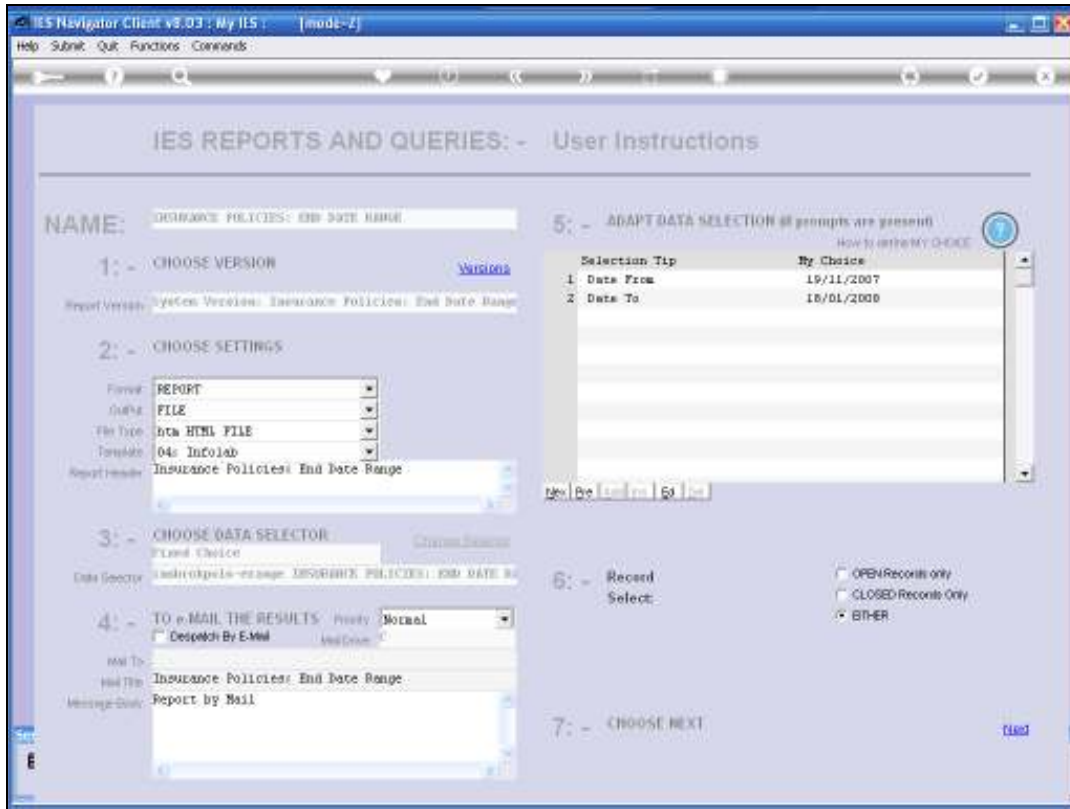
Slide 1

We will now look at the Policy listings where we can select Policies where the End Date falls between a Selected Start and End Date and also Policies with no End Date.

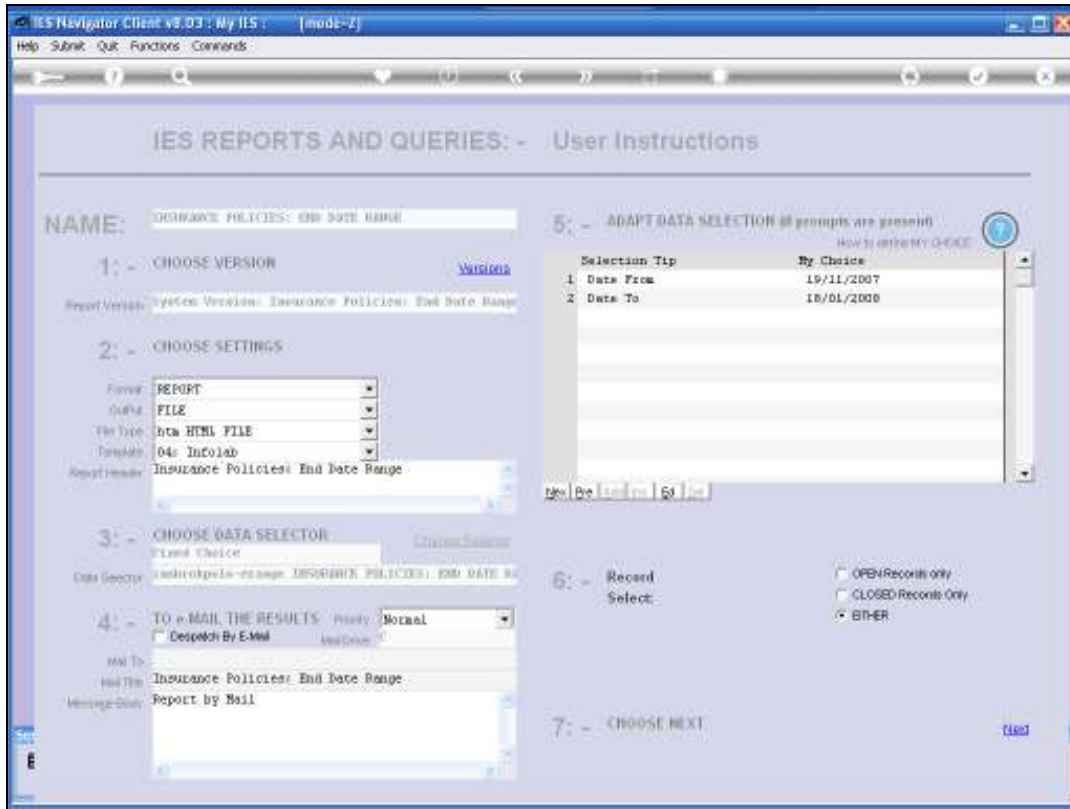
Now the usefulness of the Report for Policies where the End Date is between 2 selected dates, is of course that we can follow through on Policies that are going to come to end of term, so that we can sell New Policies or Renewals on those Policies.

In terms of the Report where no End Date is specified, that would give us a list of all the Policies that are Open-ended, i.e. they have no specified End of Term. Or perhaps should have an End of Term, but it has not been specified.

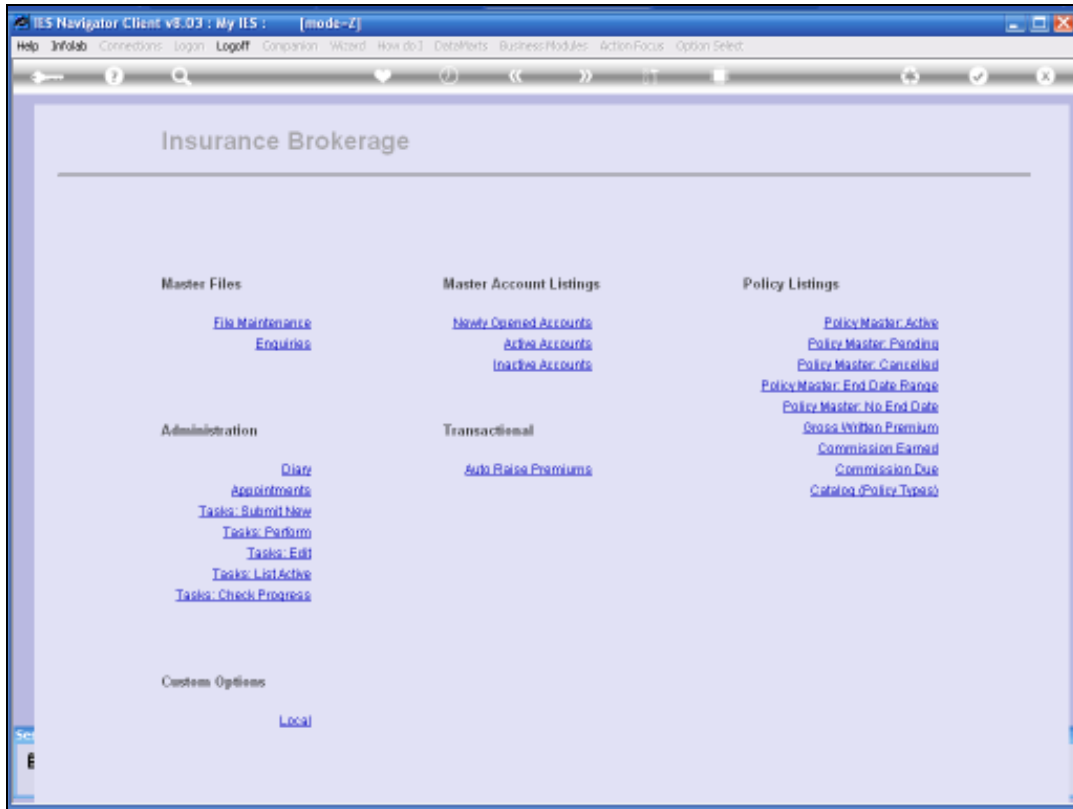
These Reports, like the other Policy listings, have Version Options. So the contents can easily be adapted and they are executed just the same.



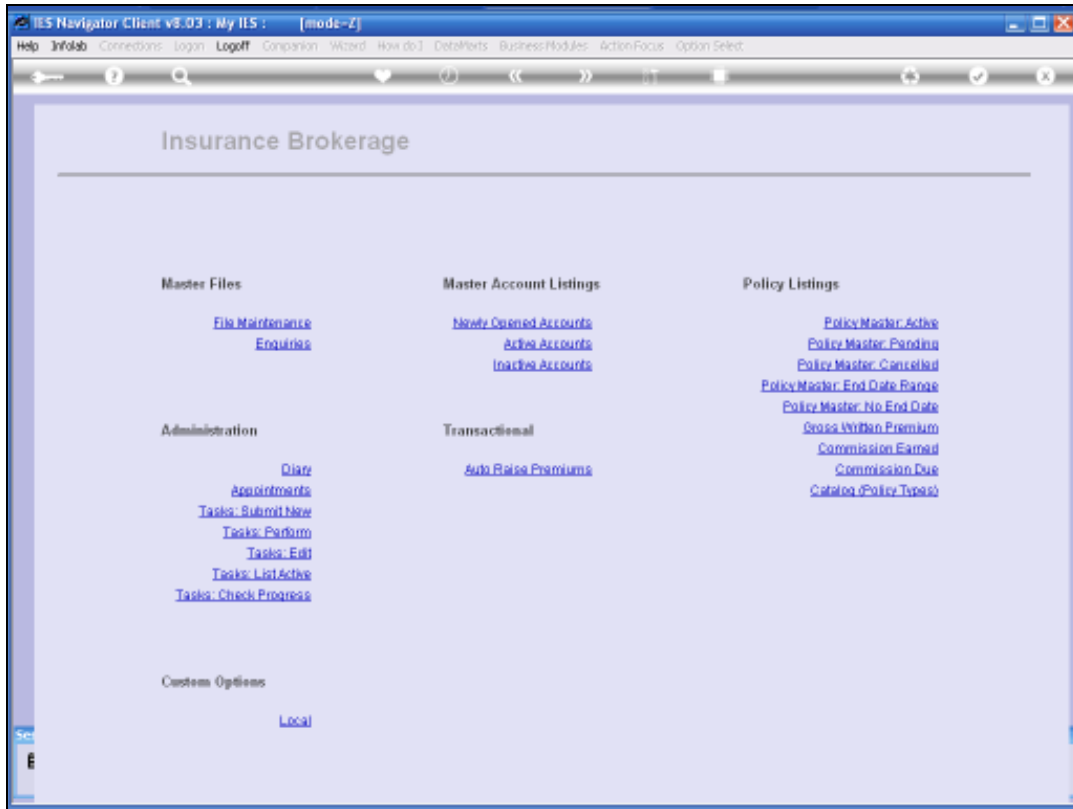
Slide 2



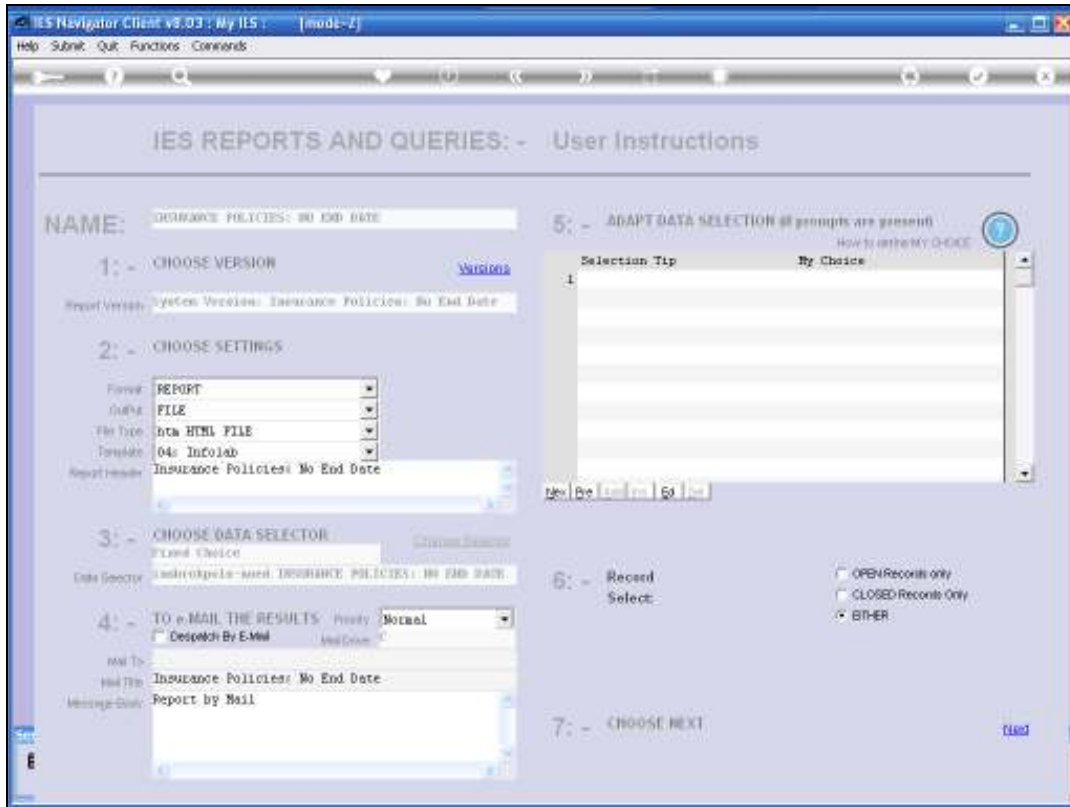
Slide 3



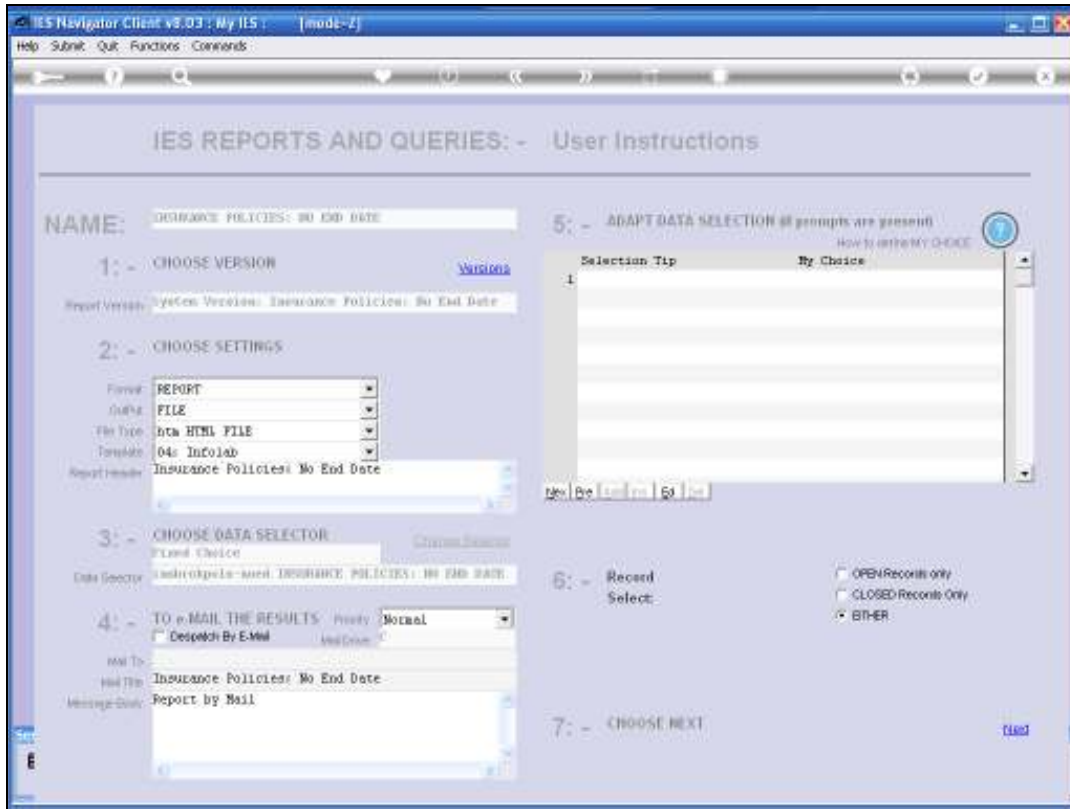
Slide 4



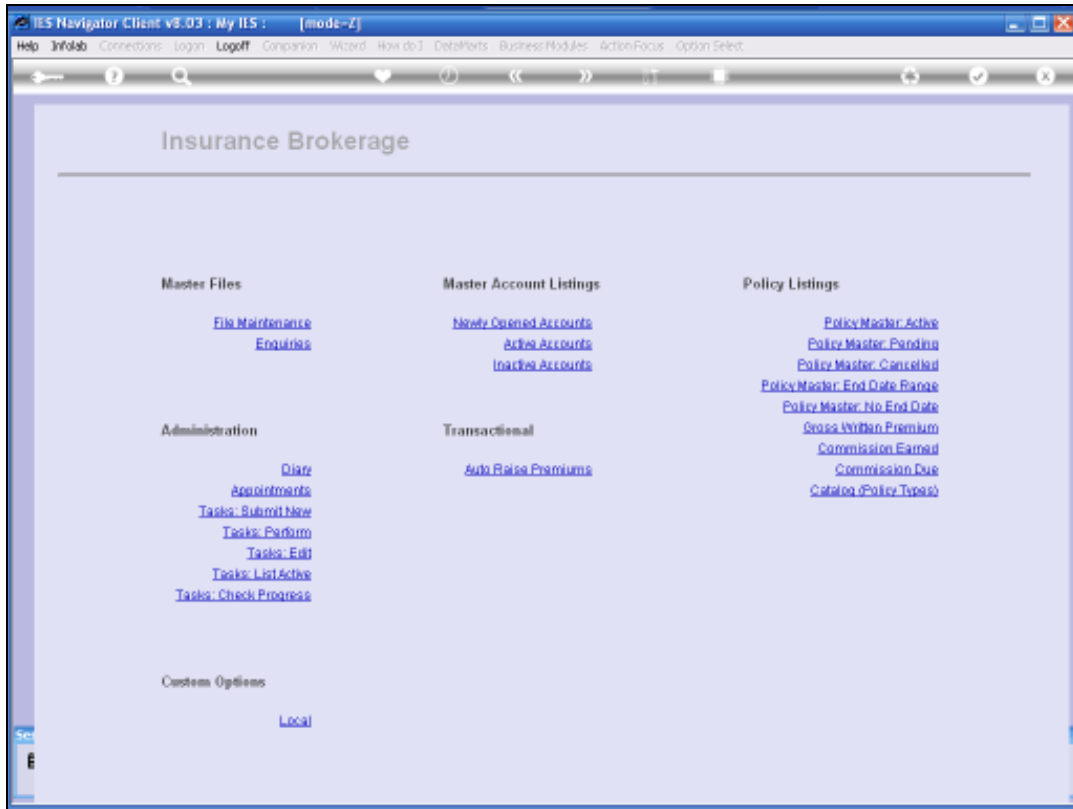
Slide 5



Slide 6

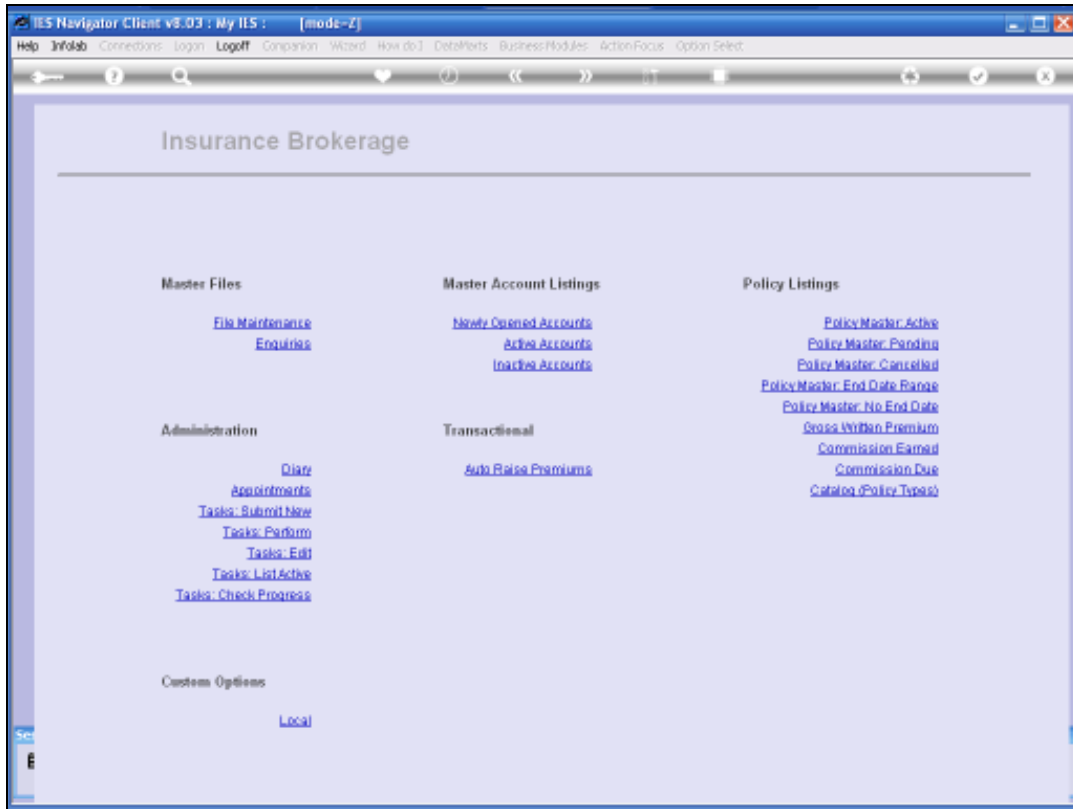


Slide 7



Slide 8





Slide 9