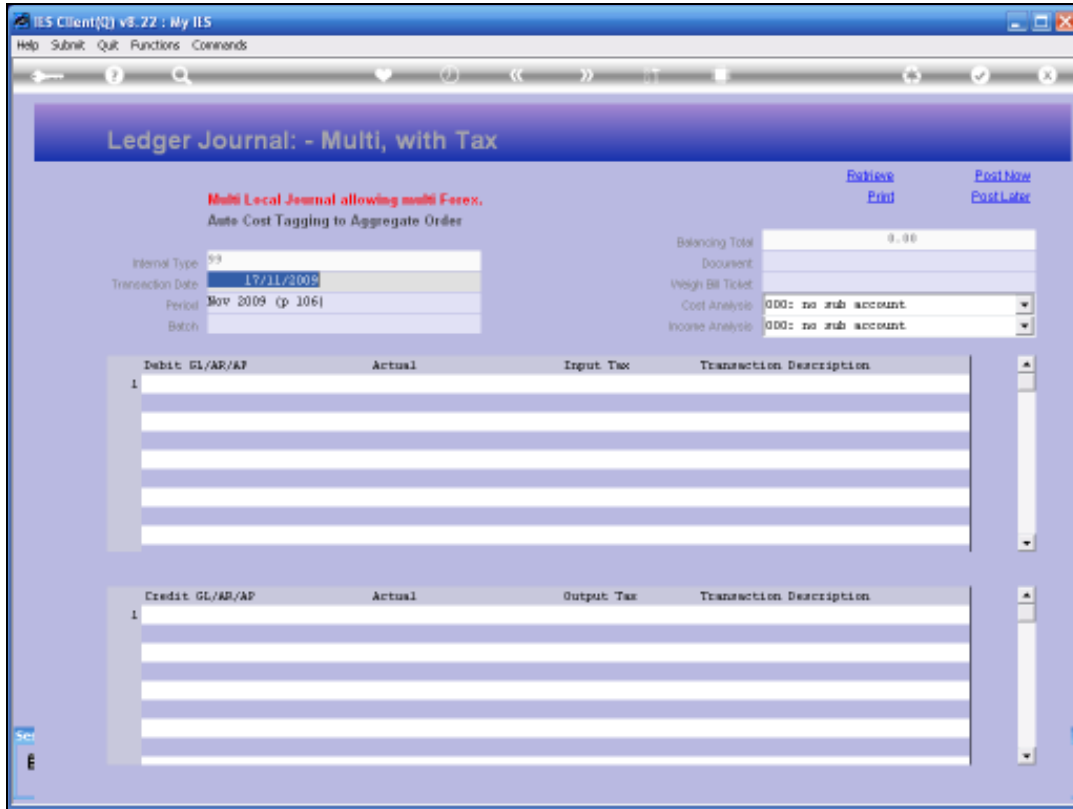
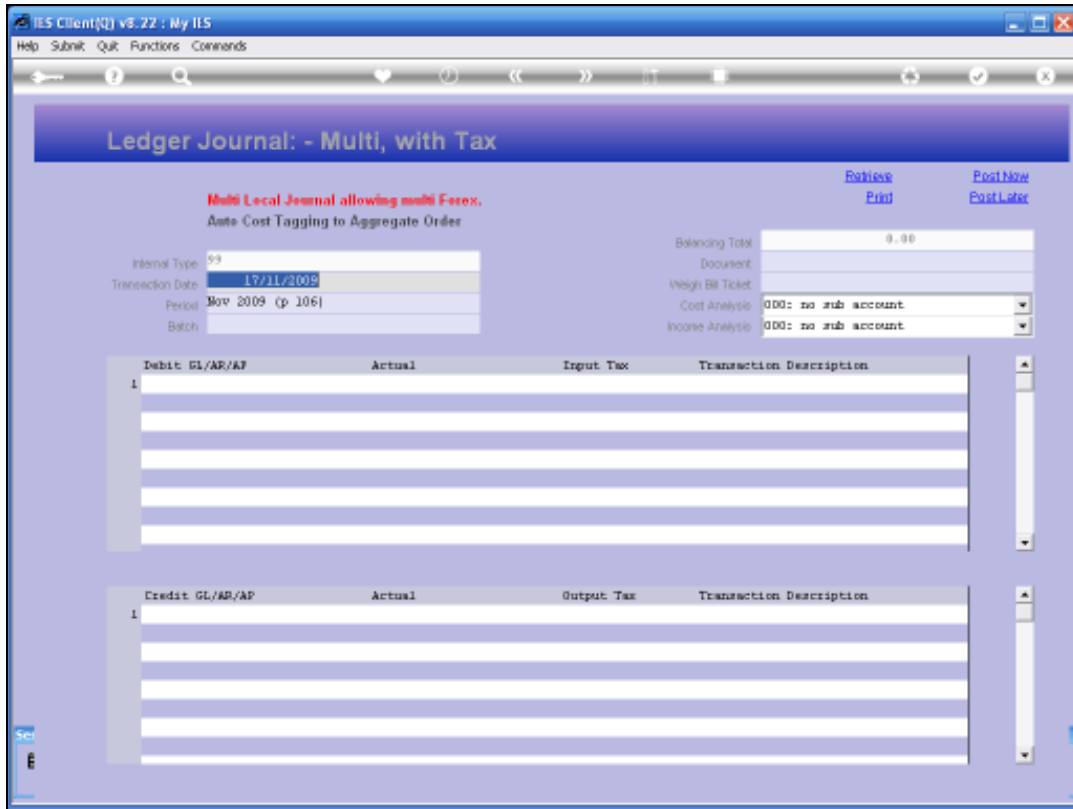


## Slide 1

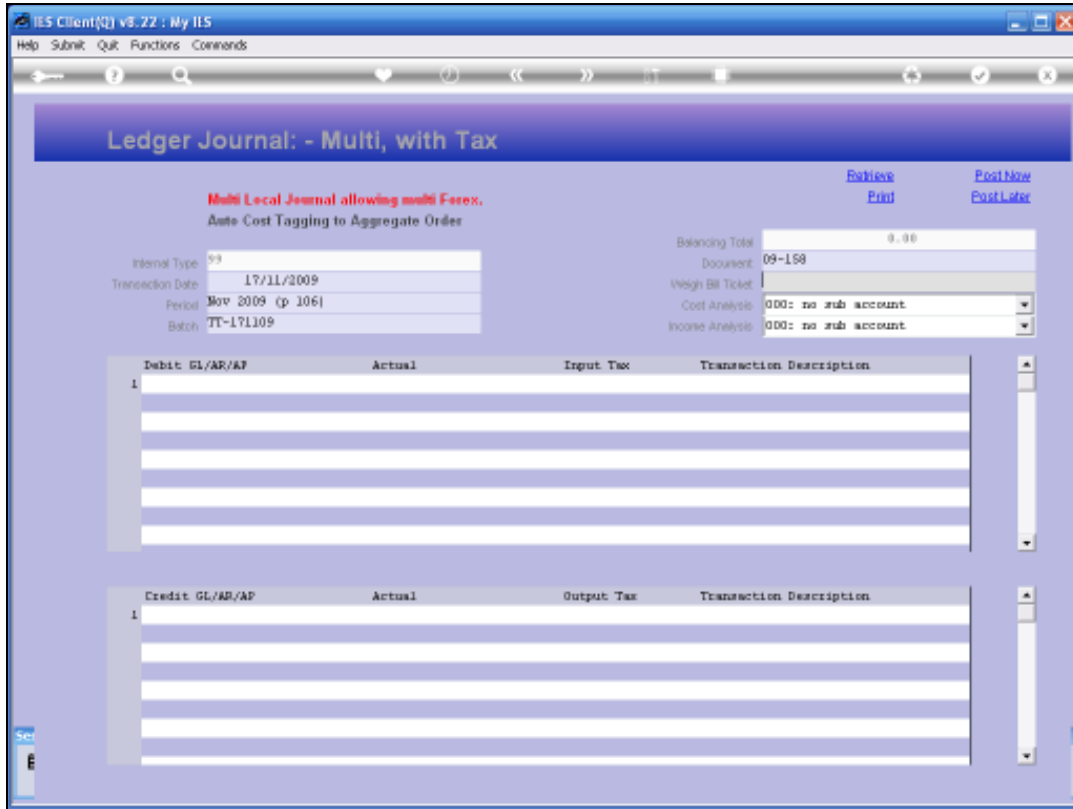
Slide notes: When we have internal Expenses relating to a Weigh Bill Ticket, then those Costs need to be included on the Weigh Bill Costing Order, else we cannot calculate a reliable Margin. For this purpose, we have a special Journal option that will automatically tag Expenses to the Weigh Bill Ticket.



Slide 2  
Slide notes:

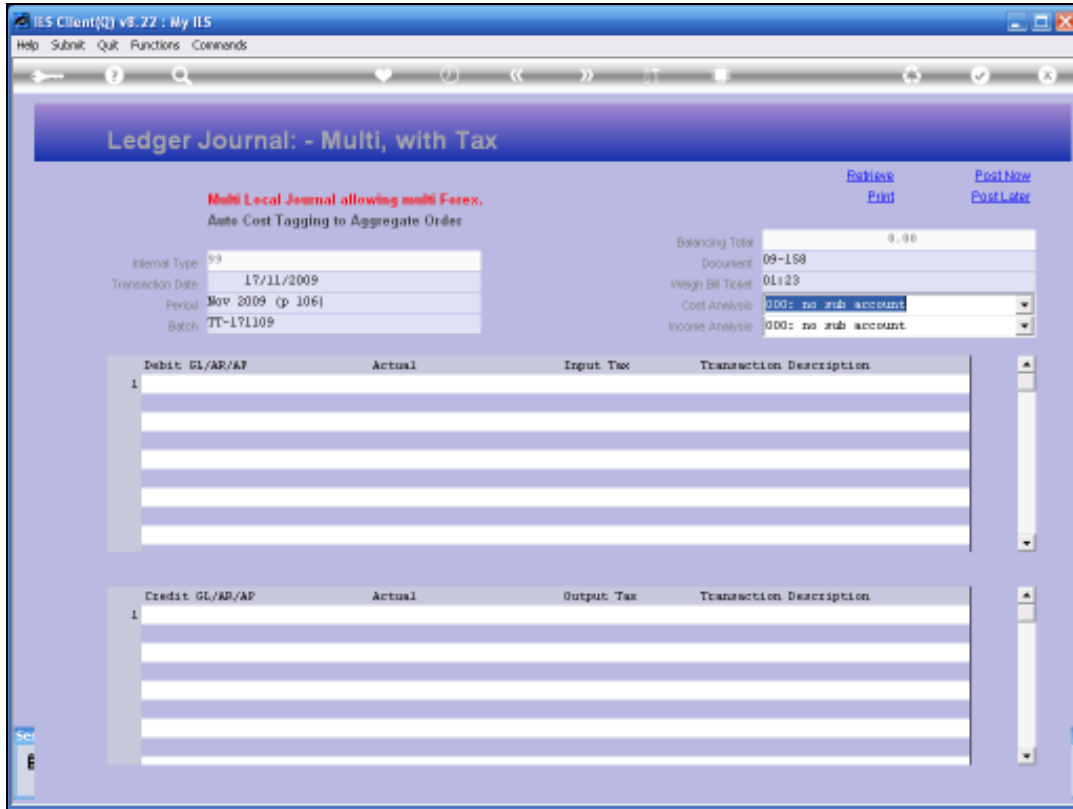


Slide 3  
Slide notes:

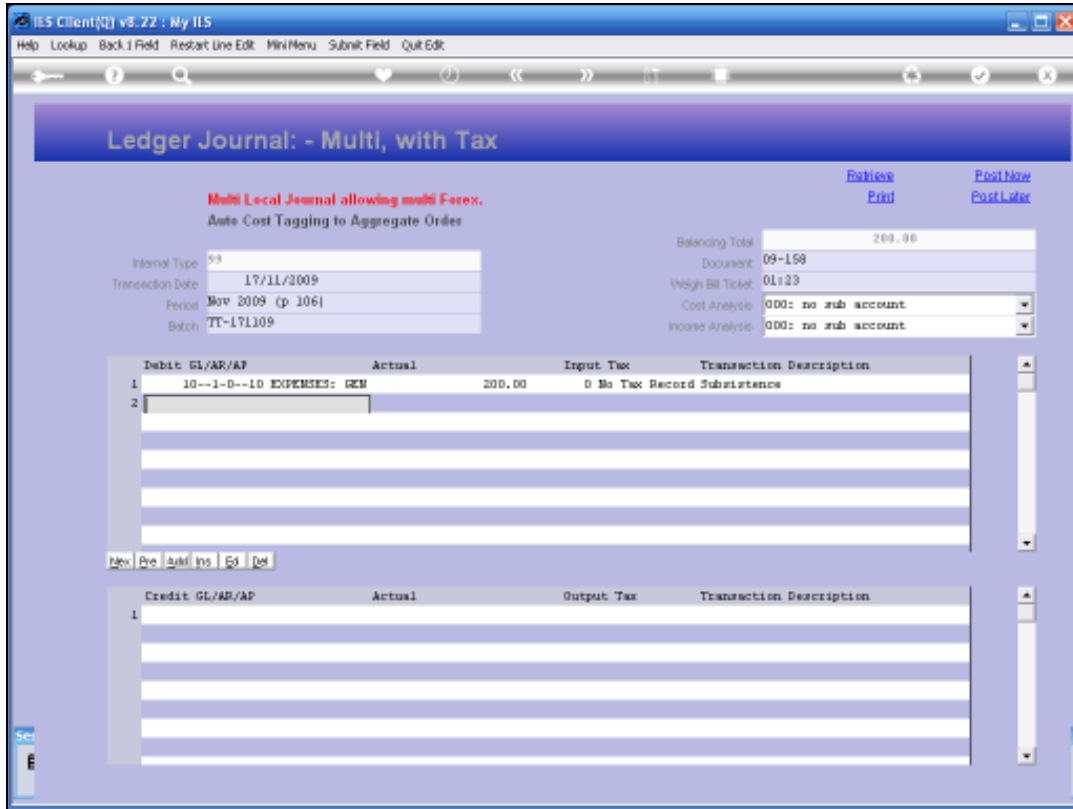


Slide 4

Slide notes: This Journal allows expensing to GL, Creditors and Debtors, and all we need to do is to indicate the Weigh Bill Ticket Number to tag the costs onto.

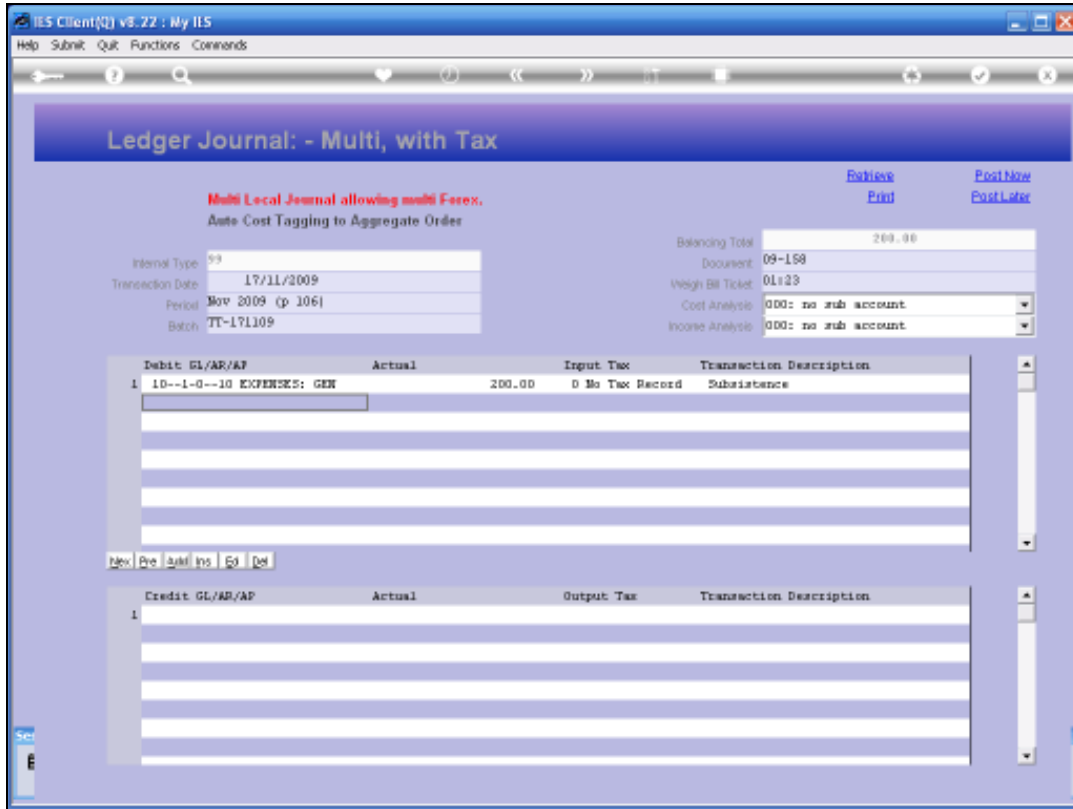


Slide 5  
Slide notes:



Slide 6

Slide notes: The system will only tag the Transactions resulting from the Debits that are listed on the Journal, i.e. the Expense allocations, and these Transactions will then automatically be included in the Weigh Bill Costing Order appraisal.



Slide 7  
Slide notes: