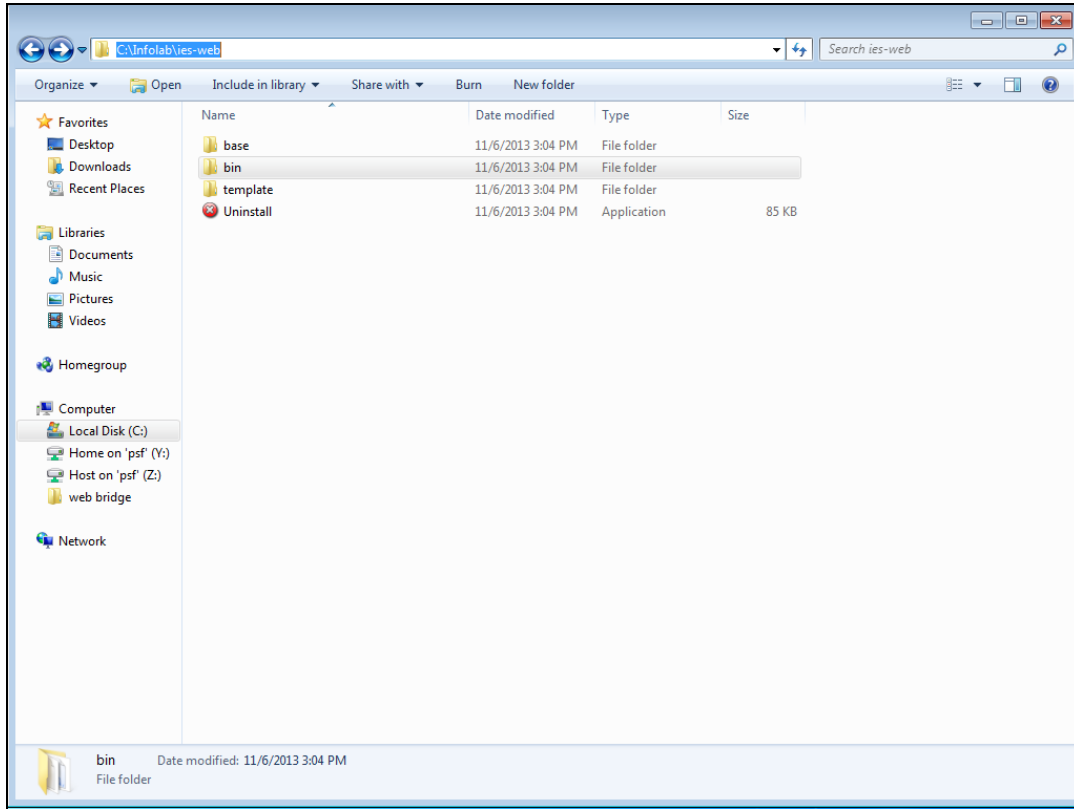
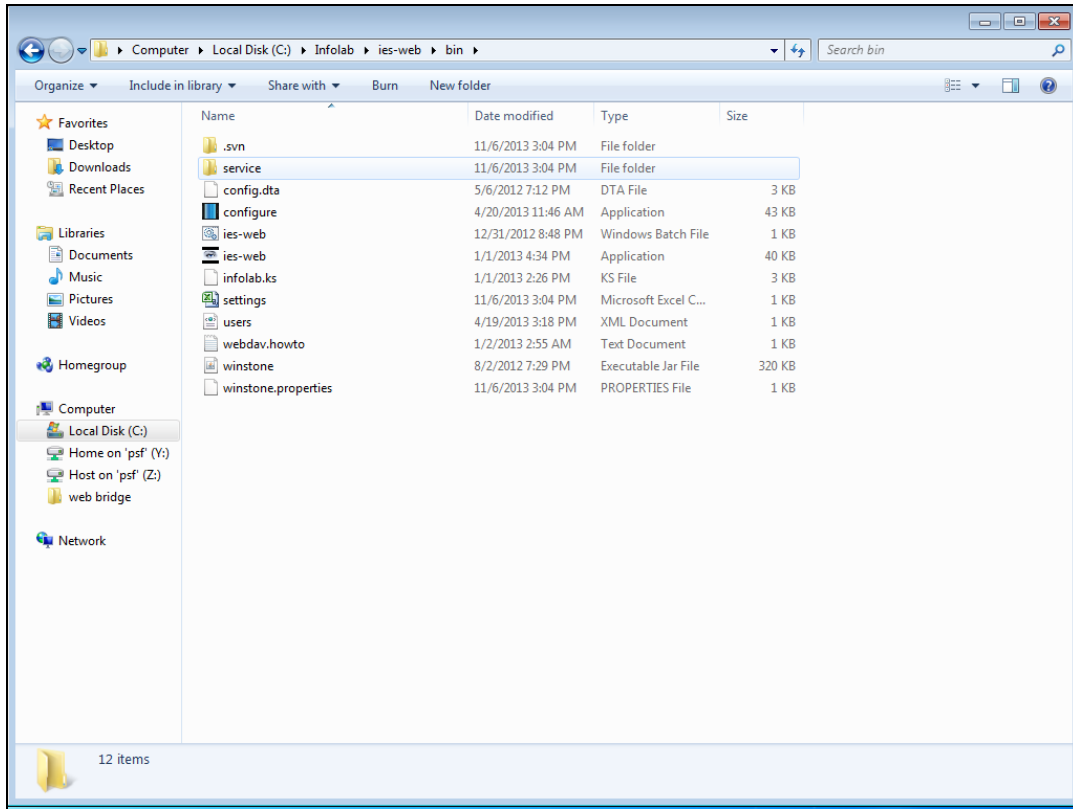


Slide 1

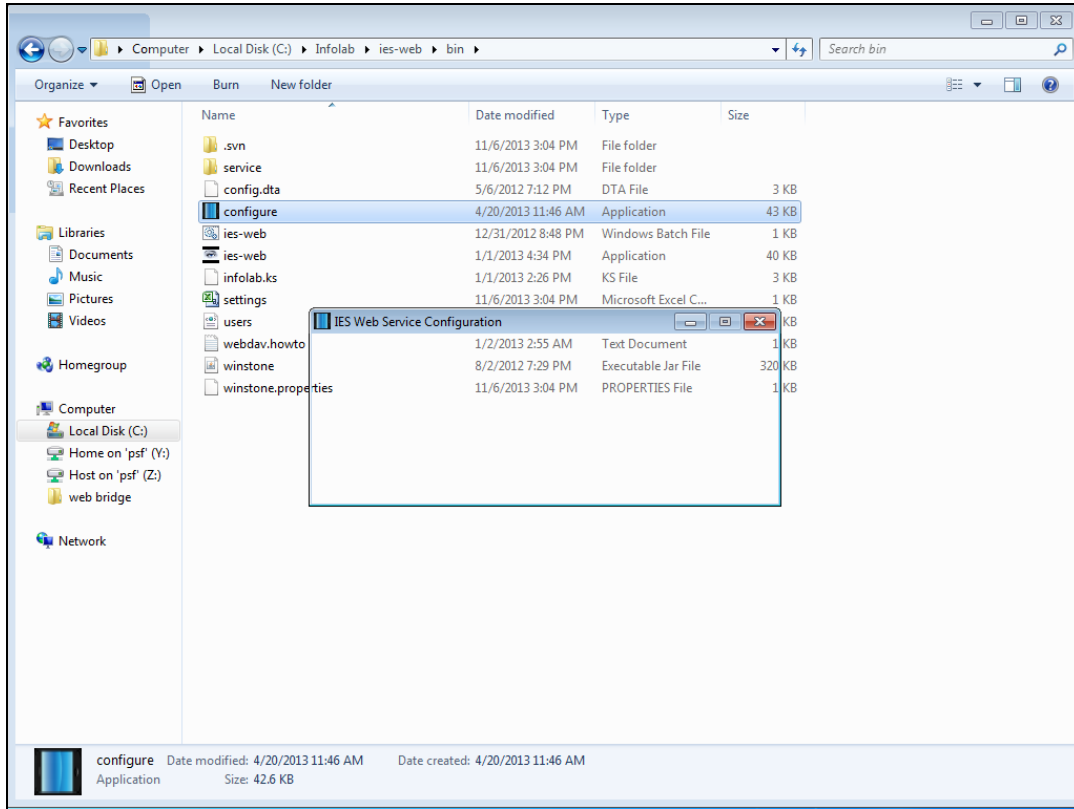
Slide notes: The Configurer may be used to change the settings for the IES Cloud service. We find the option on the install path folder as shown above.



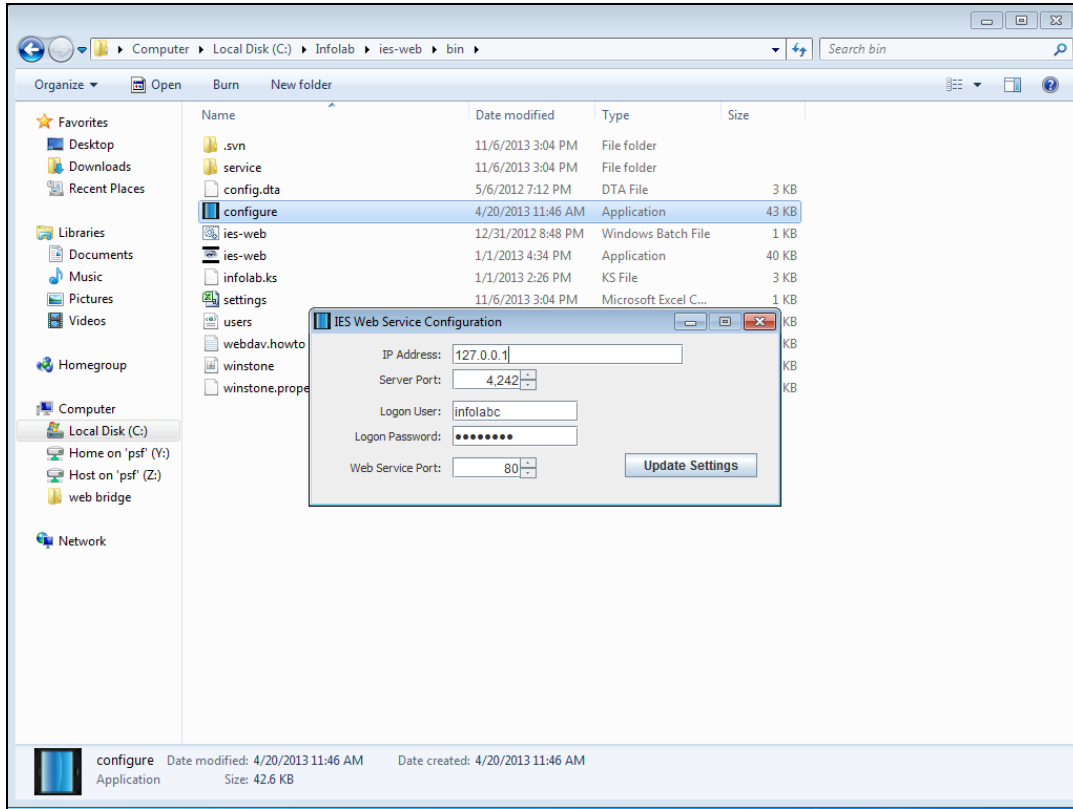
Slide 2
Slide notes:



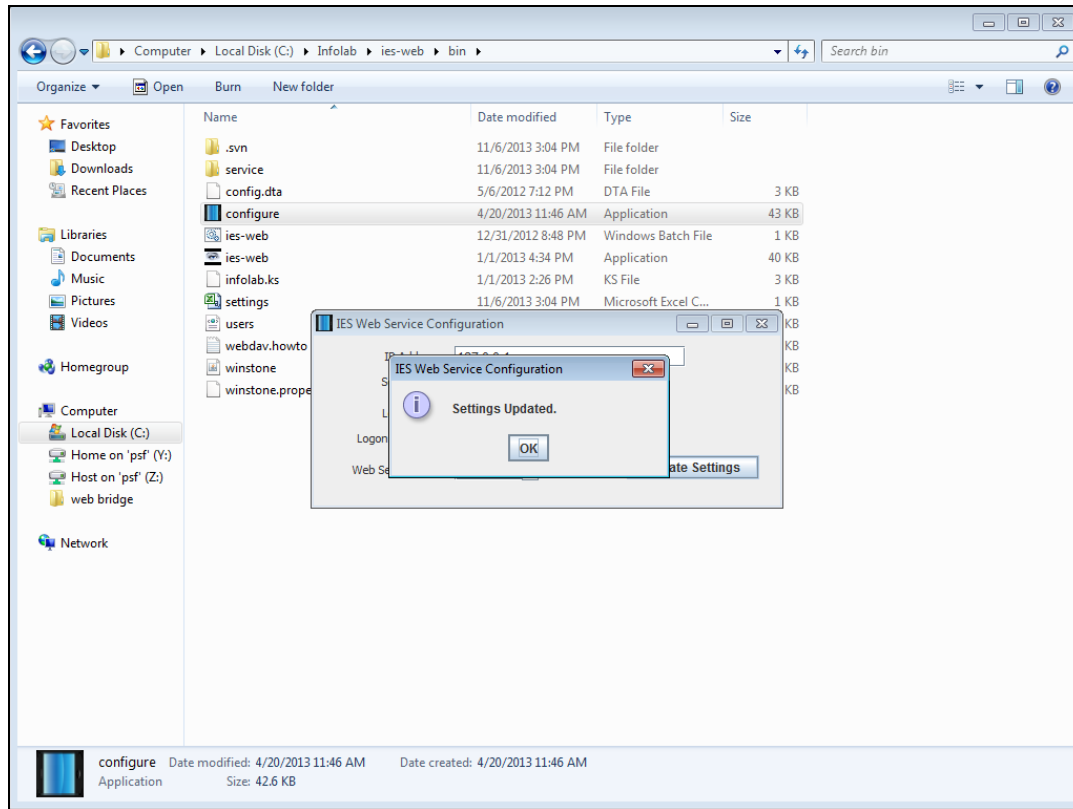
Slide 3
Slide notes:



Slide 4
Slide notes:

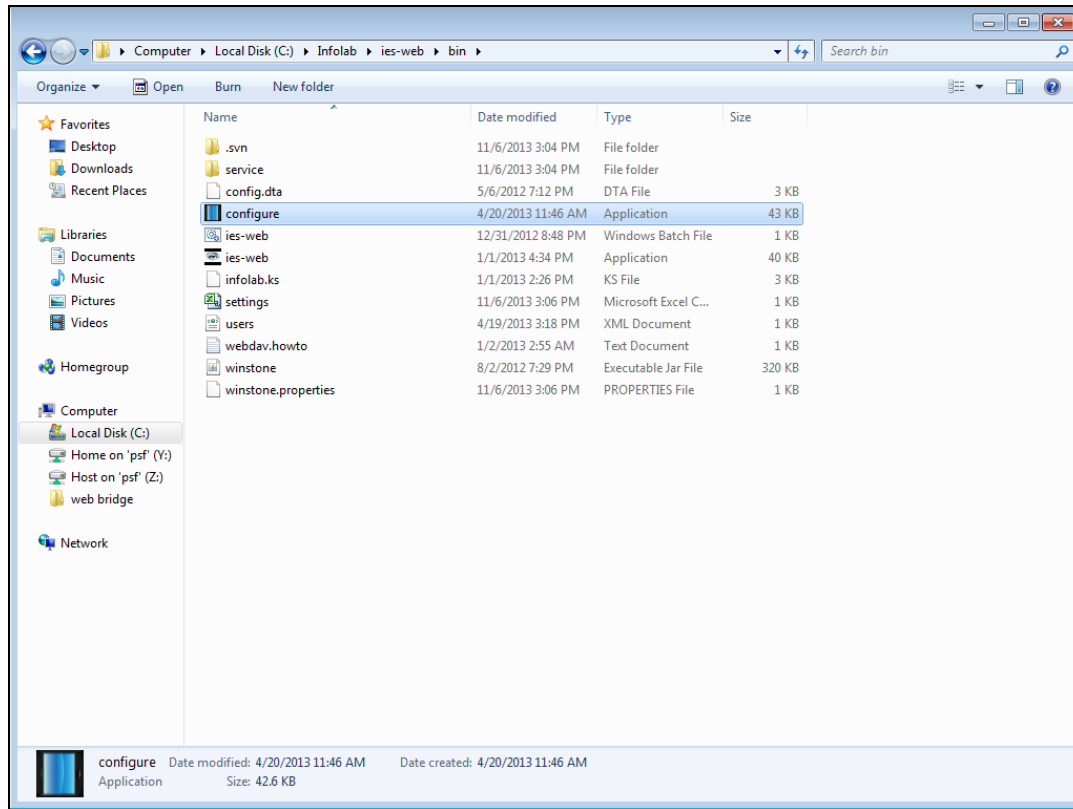


Slide 5
Slide notes:



Slide 6

Slide notes: Once we save any changes to the settings, they come into effect only upon restarting of the IES Cloud service.



Slide 7
Slide notes: