

Slide 1

Slide notes: Closed Maintenance Events are tasks that are complete and closed. The Report for such Closed Maintenance Events is always run for a selected Date Range of when the tasks were completed.



Slide 2
Slide notes:

IES Client(v8.25) : My IES

Help Submit Quit Functions Comments

IES REPORTS AND QUERIES - User Instructions

NAME: PLN EVENTS CLOSURE, DATE FROM / TO

CHOOSE VERSION [Versions](#)

Report Version: system version: PLN Events Closure, Date From / To

CHOOSE SETTINGS

Format: report

Output: FILE

File Type: text text file

Printer: 04: Infolab

Report Header: PLN Events Closure, Date From / To

CHOOSE DATA SELECTOR [Data Selectors](#)

Class choice: PLNEVENTS-CLOSURE: PLN EVENTS CLOSED DATE / TO

TO E-MAIL THE RESULTS [Email](#) **normal**

Dispatch By E-Mail [Email Class](#)

Mail To: PLN Events Closure, Date From / To

Message Body: report by mail

ADAPT DATA SELECTION @ prompts are present [How to Select? DATA](#)

Selection Tip	By Choice
1 Date From	08/04/2010
2 Date To	08/04/2010

Rev Del Add Print Go List

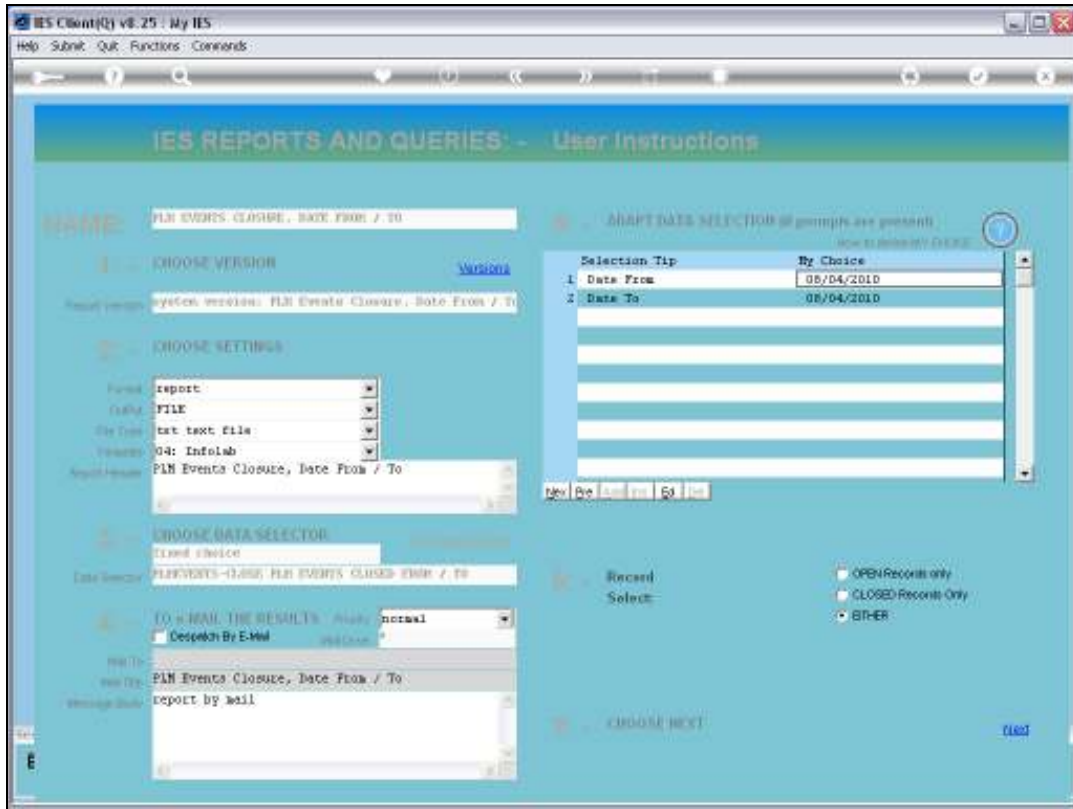
Record Select:

- OPEN Records only
- CLOSED Records Only
- EITHER

CHOOSE NEXT [Next](#)

Slide 3

Slide notes: In this example, we are performing the Report for a single Day, but of course we can use any Date Range.



Slide 4
Slide notes:

```
Q1544342195A.TXT - Notepad
File Edit Format View Help
InfoLab (Prj) Ltd
11:42:15 12 APR 2010 page 1
PLM Invoice Closure, Date From / To

Work Order.  Date Closed  Description.....  Maint Register.....
00019        09/04/2010  10,000 Vehicle Rust Inspect, Preserv  VER1902 CHERRY 1400, D00002
**

1 record(s) listed
```

Slide 5

Slide notes: And in our example, we see a single Maintenance Event that was completed on the selected Day.

```
Q1544342195A.TXT - Notepad
File Edit Format View Help
InfoTab (Fry) Ltd
11:42:15 12 APR 2010 page 1
PLM Invoice Closure, Date From / To

Works Order.  Date Closed  Description.....  Maint Register.....
W0019        09/04/2010  10,000 Vehicle Rust Inspect, Present  VER1902 CHERRY 1400, D00002
**

1 record(s) listed
```

Slide 6
Slide notes: