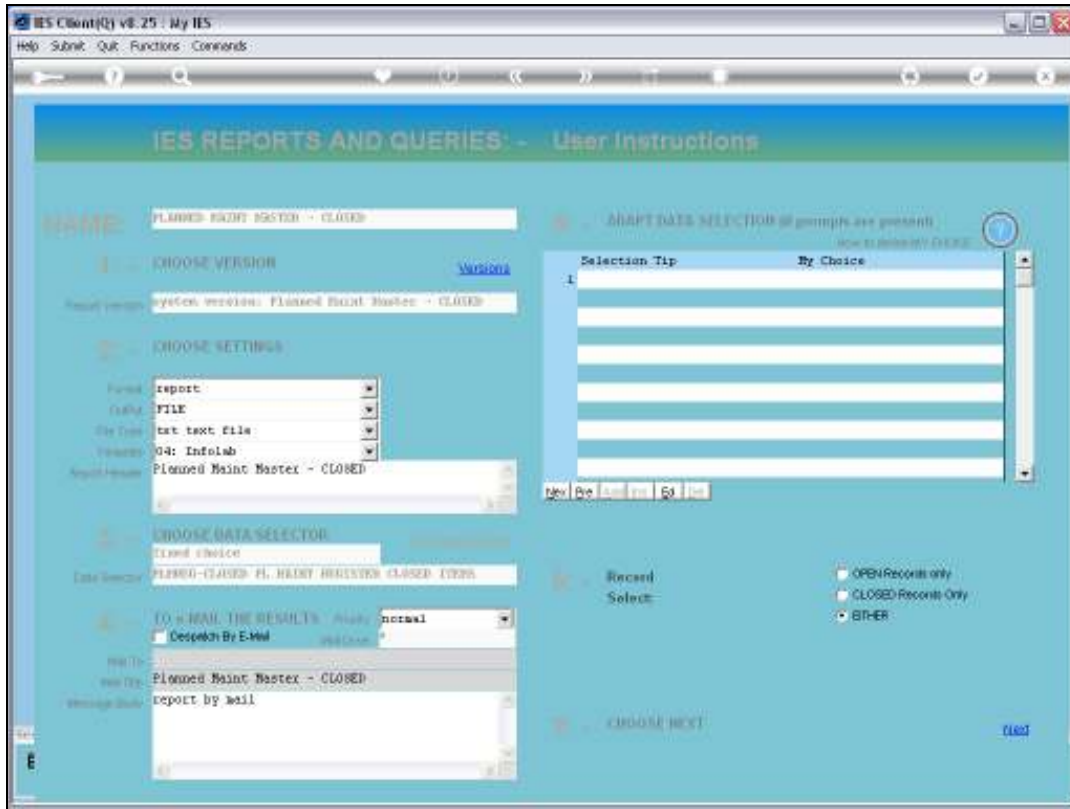


Slide 1

Slide notes: CLOSED Maintenance Master Items are Items that are no longer in use. They may have been sold, scrapped or closed as Maintenance Master Items for any other reason.



Slide 2
Slide notes:



Slide 3
Slide notes:

```
Q154413206BA.TXT - Notepad
File Edit Format View Help
InfoLab (Fry) Ltd
09:54:29 10 APR 2010 page 1

Planned Maint Master - CLOSED

Key..... Description..... Equip. Group.....
tsgh001      FACTORY BOILER no 1      [FM] Factory Machinery
vsh1267      KILN: 2000, 438969      [vs] Vehicle Service: Kiln
vsh1261      KILN: 2000, DC6101      [vs] Vehicle Service: Kiln

2 record(s) listed
```

Slide 4

Slide notes: This is an example of the listing of CLOSED Planned Maintenance Master Items. The CLOSED Items retain all prior history from the time when still in use.

```
Q154413206BA.TXT - Notepad
File Edit Format View Help
InfoLab (Fry) Ltd
09:54:29 10 APR 2010 page 1
Planned Maint. Header - CLOSED

Key..... Description..... Error Group.....
veh001      FACTORY BOILER no 1      [FM] Factory Machinery
veh1007     KILN: 2000, 438069      [ve] Vehicle Service: Kilus
veh1061     KILN: 2000, DC6101      [ve] Vehicle Service: Kilus

2 record(s) listed
```

Slide 5
Slide notes: