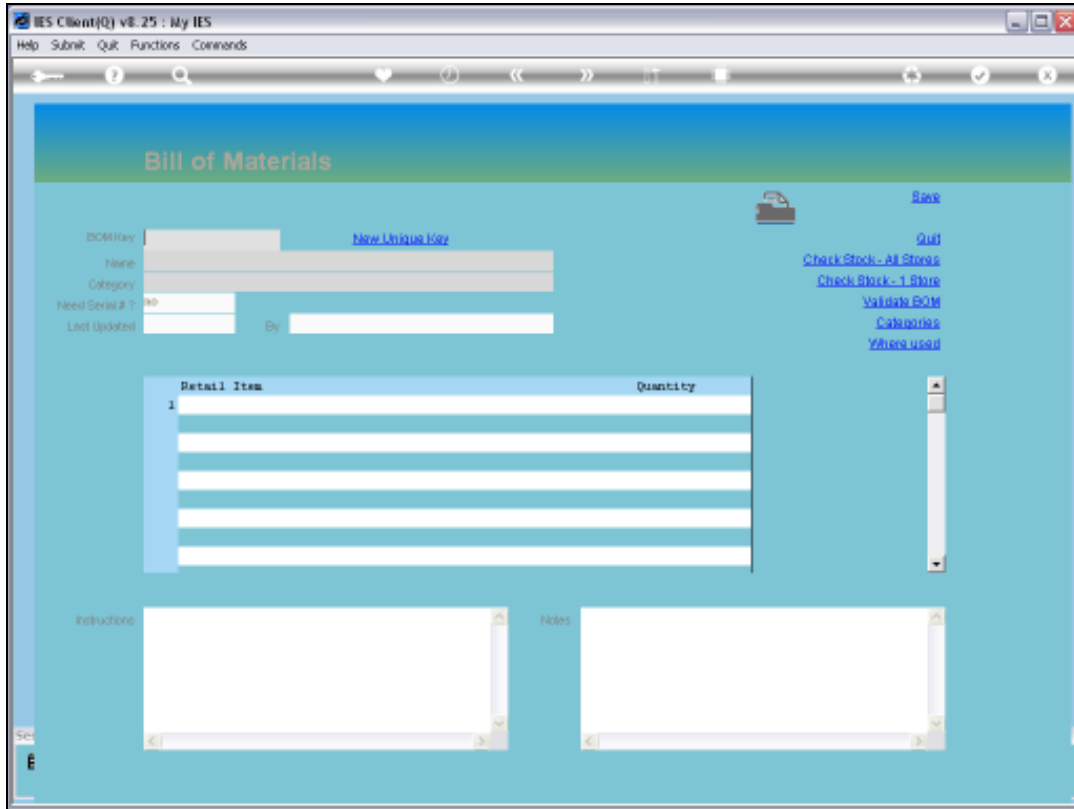
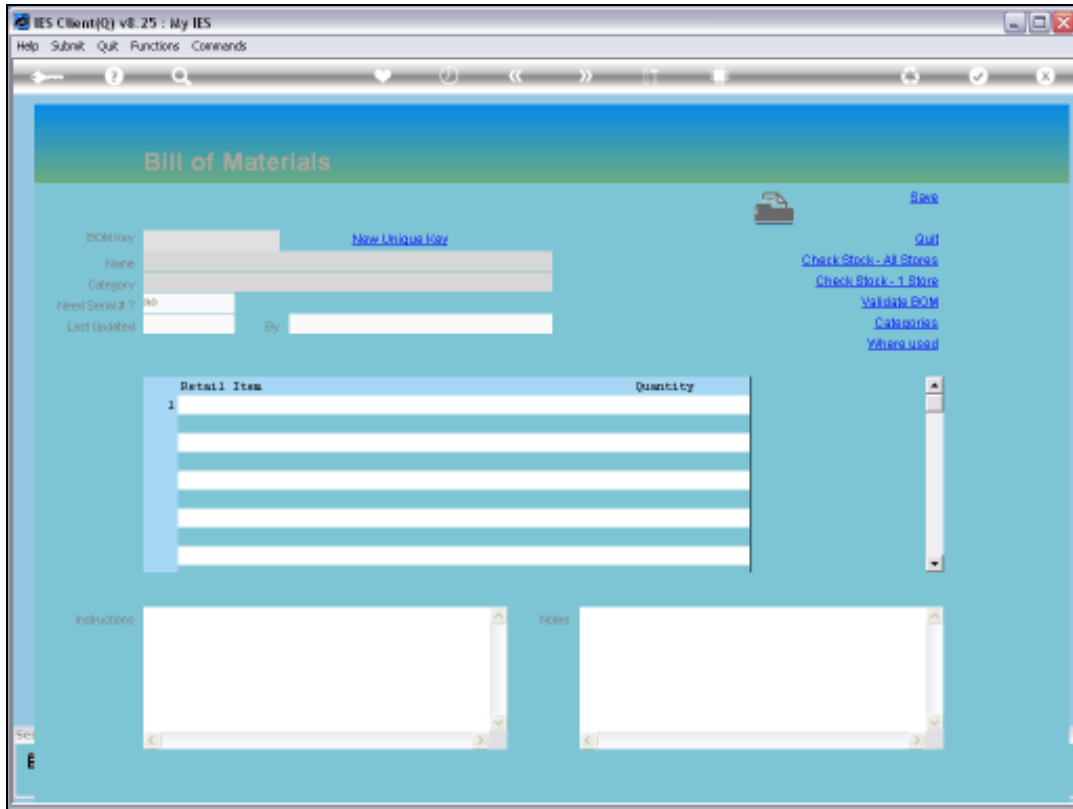


Slide 1

Slide notes: There are multiple access points in the IES Business system to the definition option for a Bill of Materials. In this instance, we do it from the Planned Maintenance Menu.

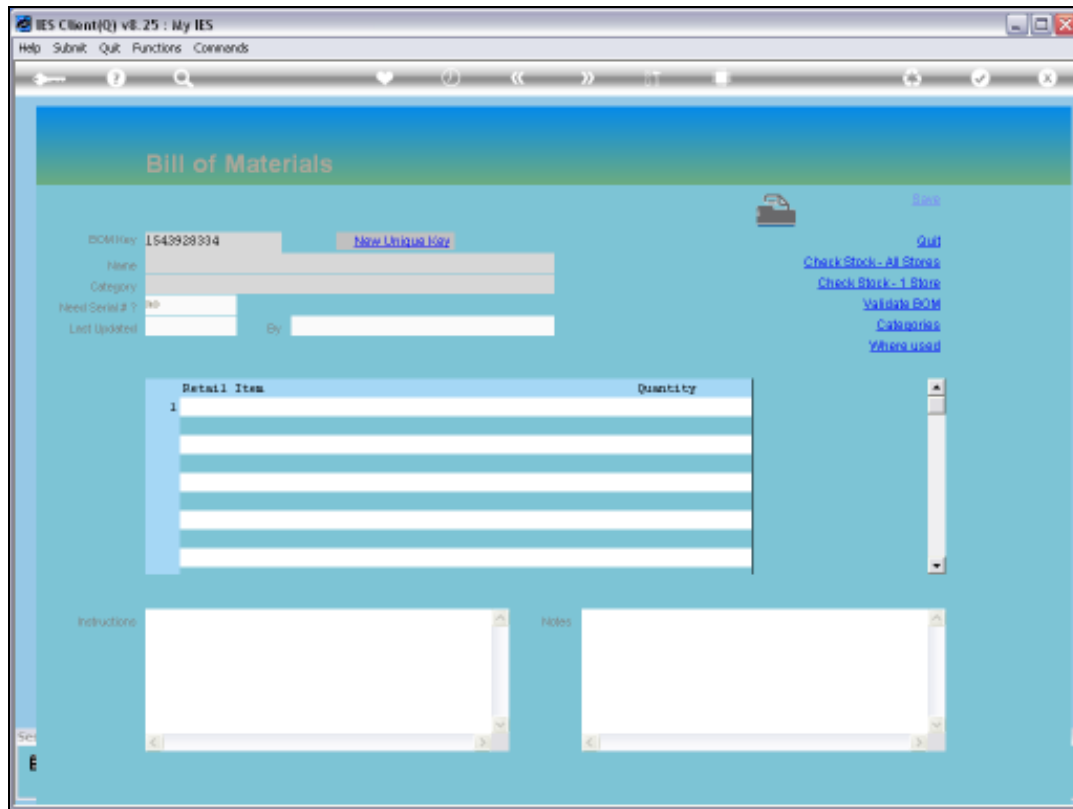


Slide 2
Slide notes:



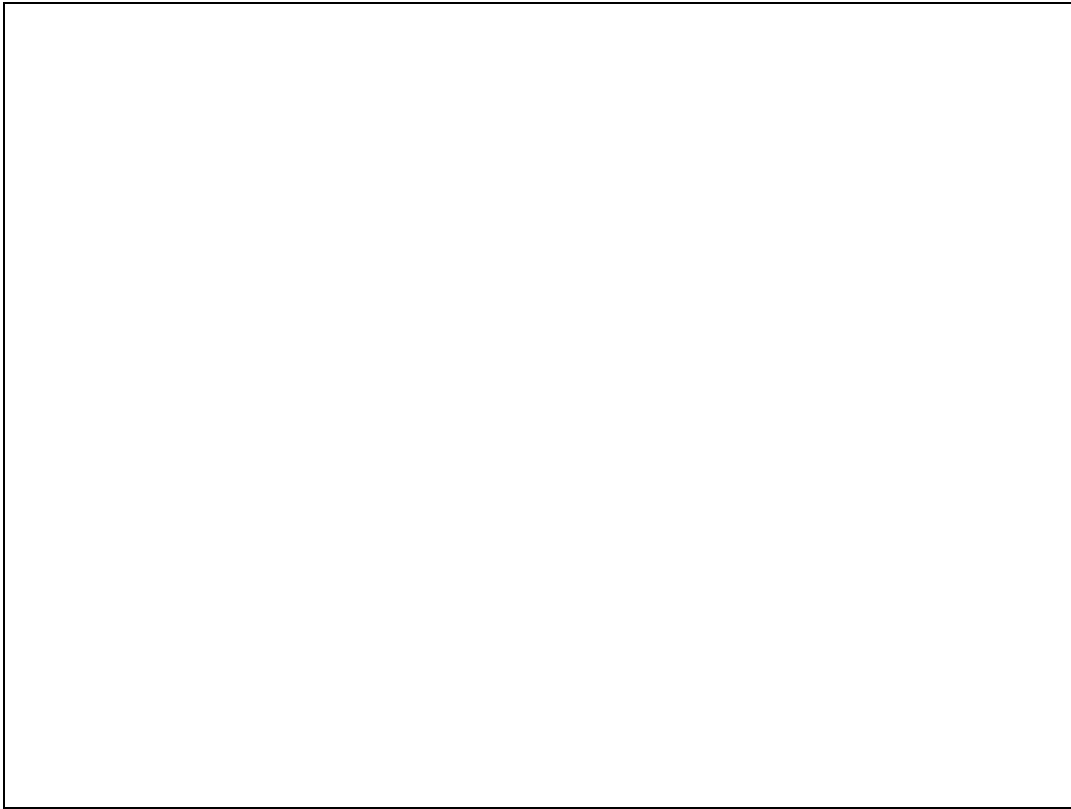
Slide 3

Slide notes: When defining a brand new Bill of Materials, we can get a unique Key from the system, or we can invent our own.



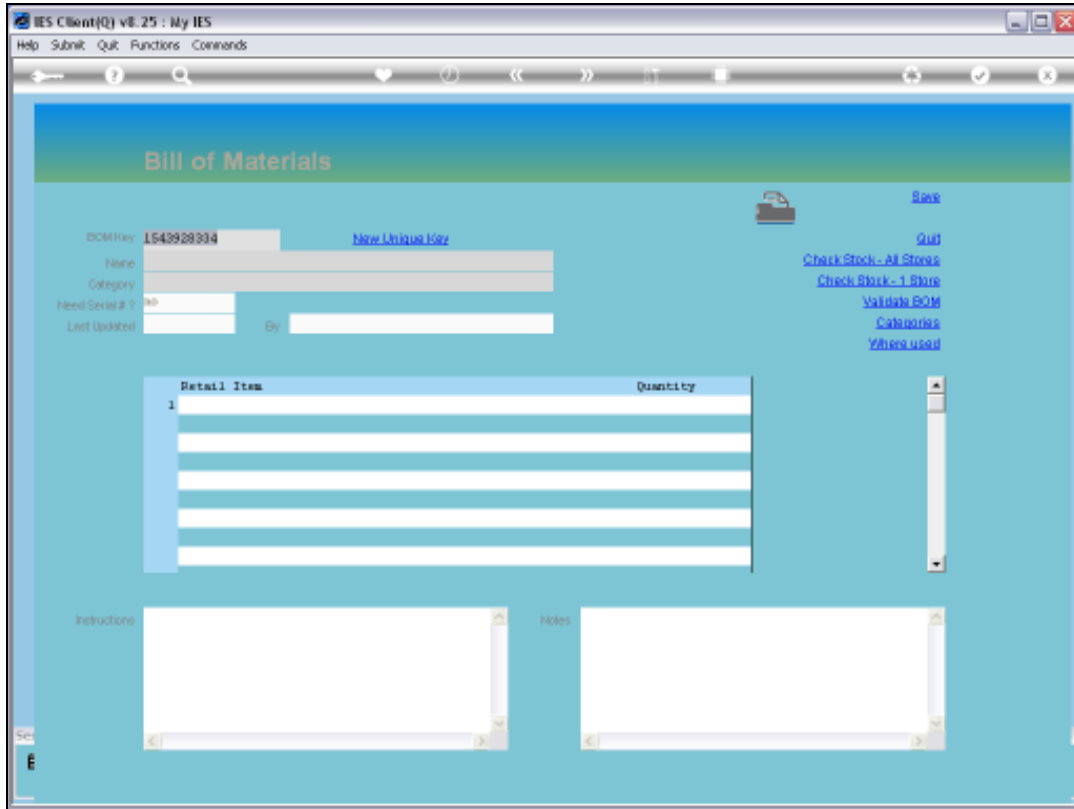
Slide 4

Slide notes: We can use this Key, but in fact, we also want to show that we can use our own, so we will do that.

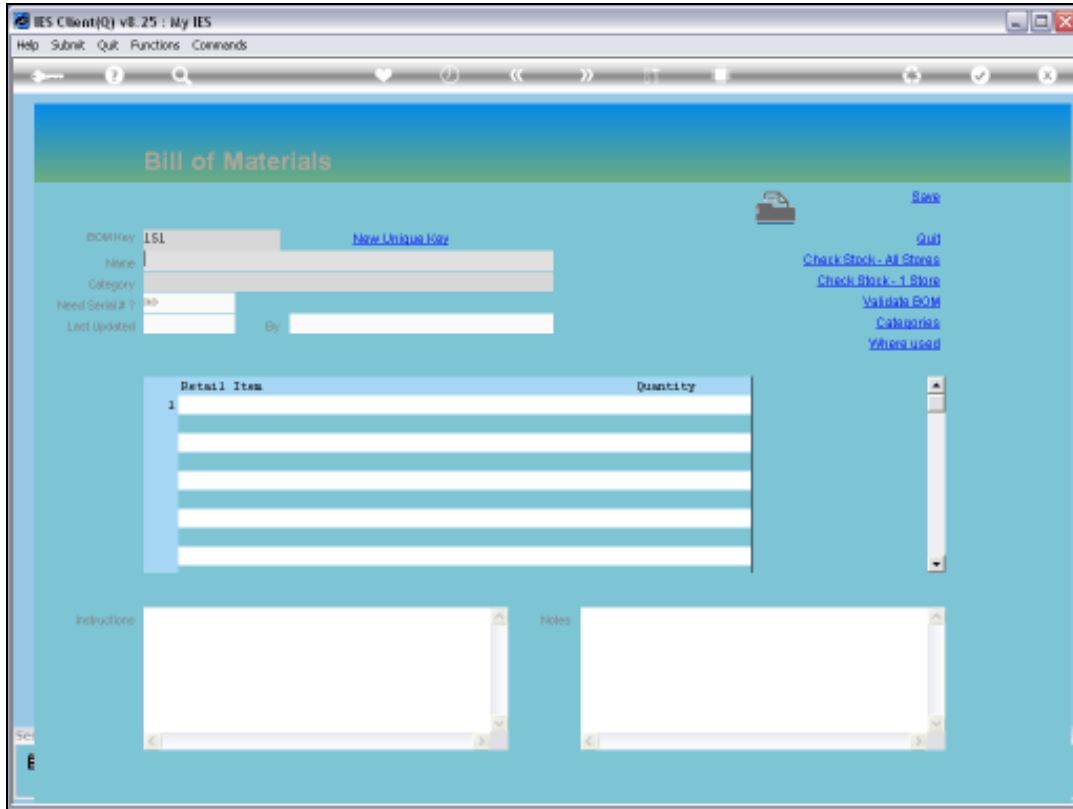


Slide 5

Slide notes:

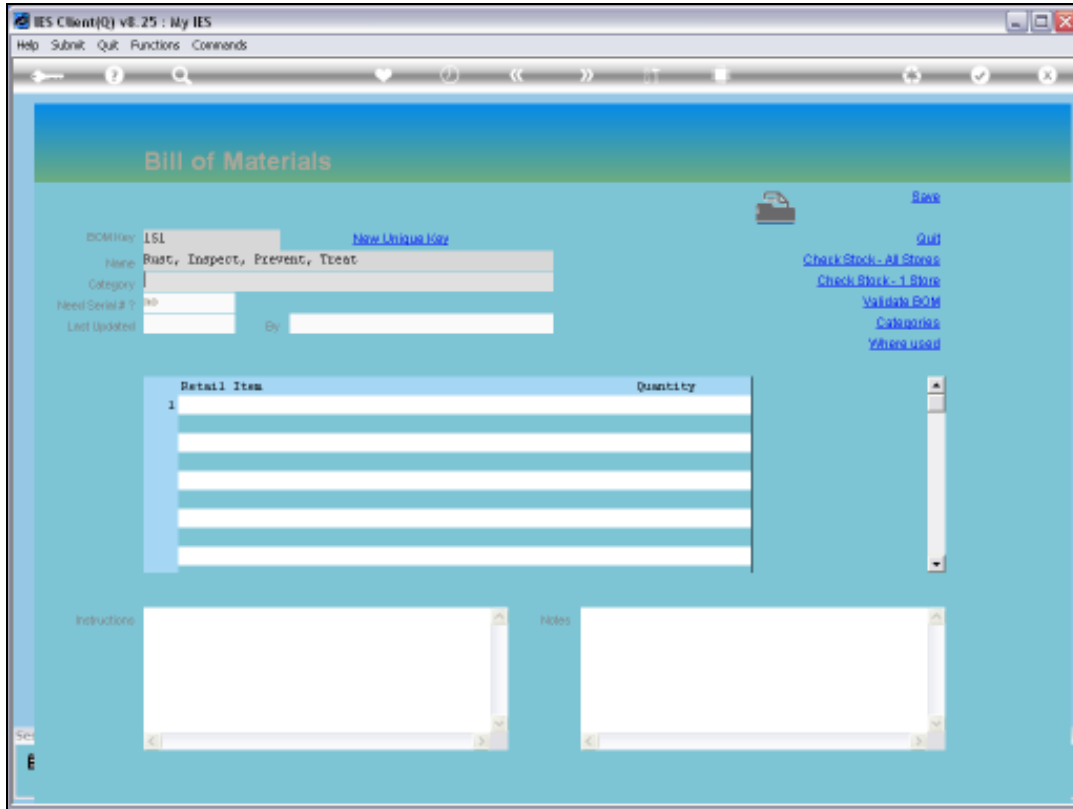


Slide 6
Slide notes:



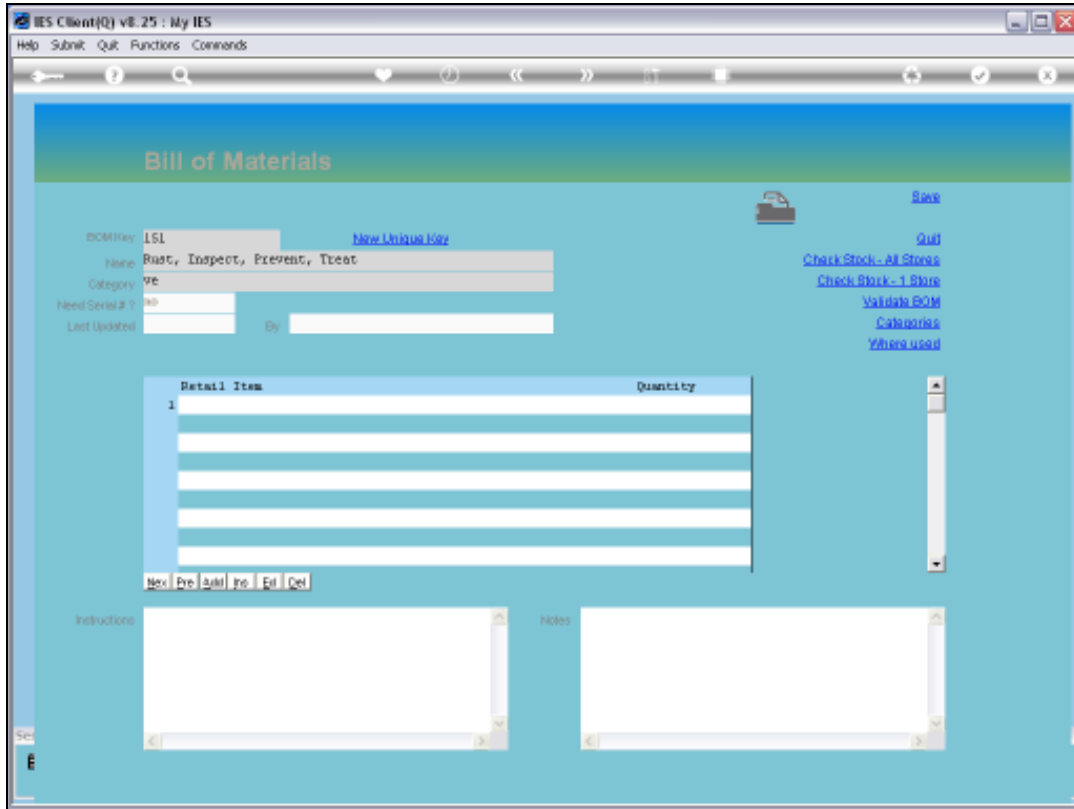
Slide 7

Slide notes: A Bill must have a Name that identifies it well.

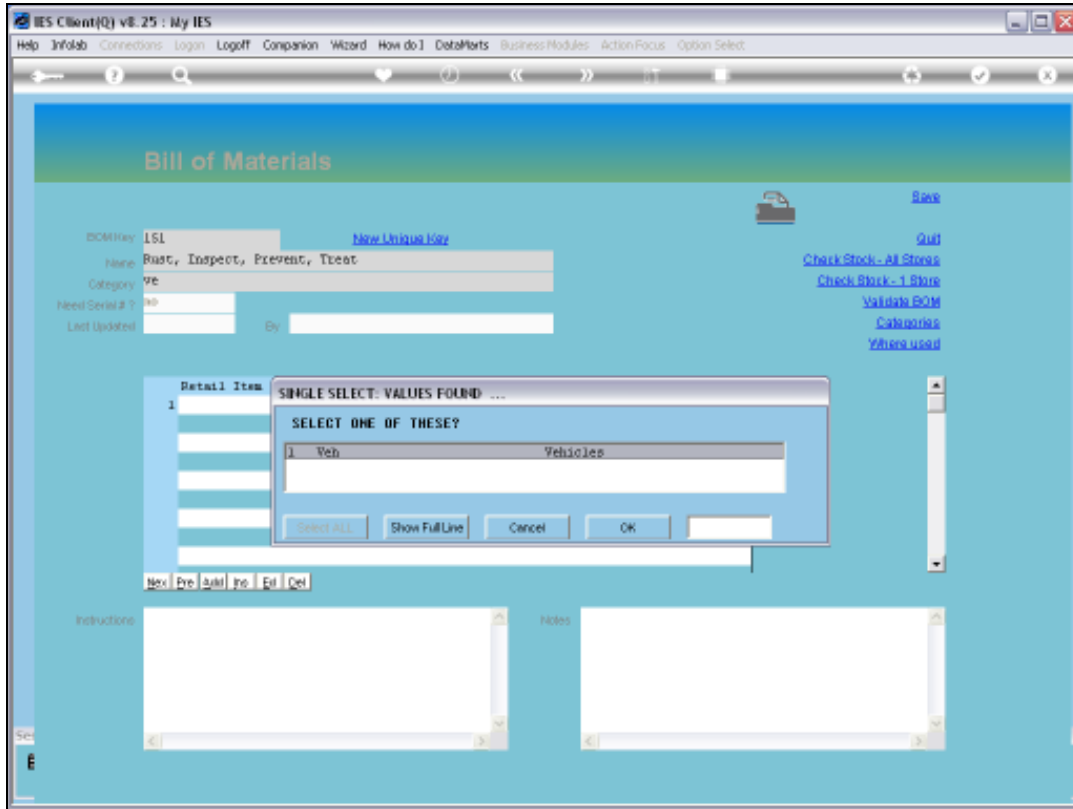


Slide 8

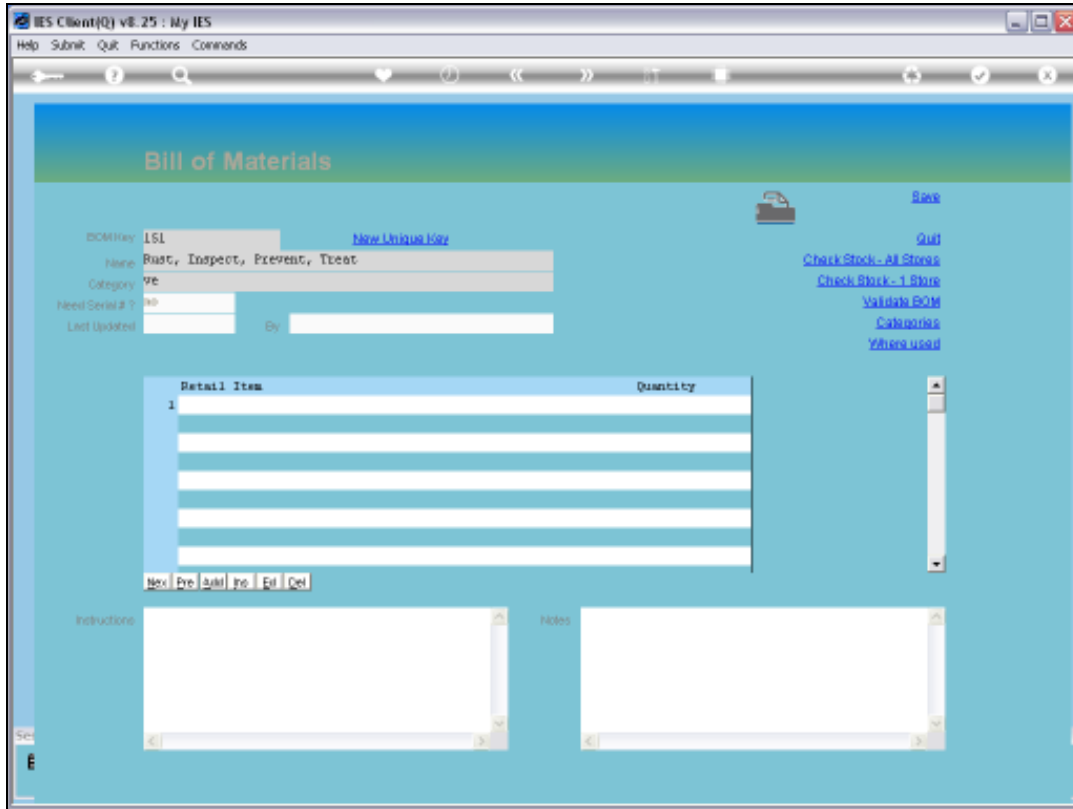
Slide notes: And a Bill should belong to a Category, otherwise, when there are many Bills, it becomes too difficult to find the correct one.



Slide 9
Slide notes:

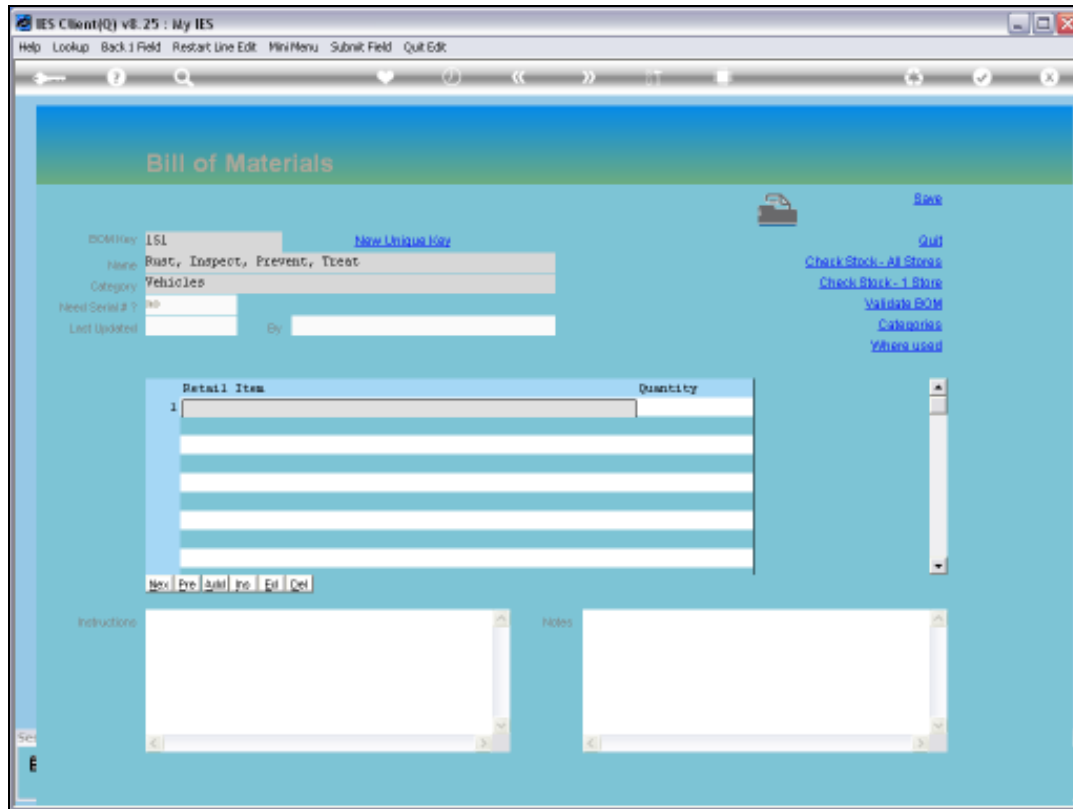


Slide 10
Slide notes:



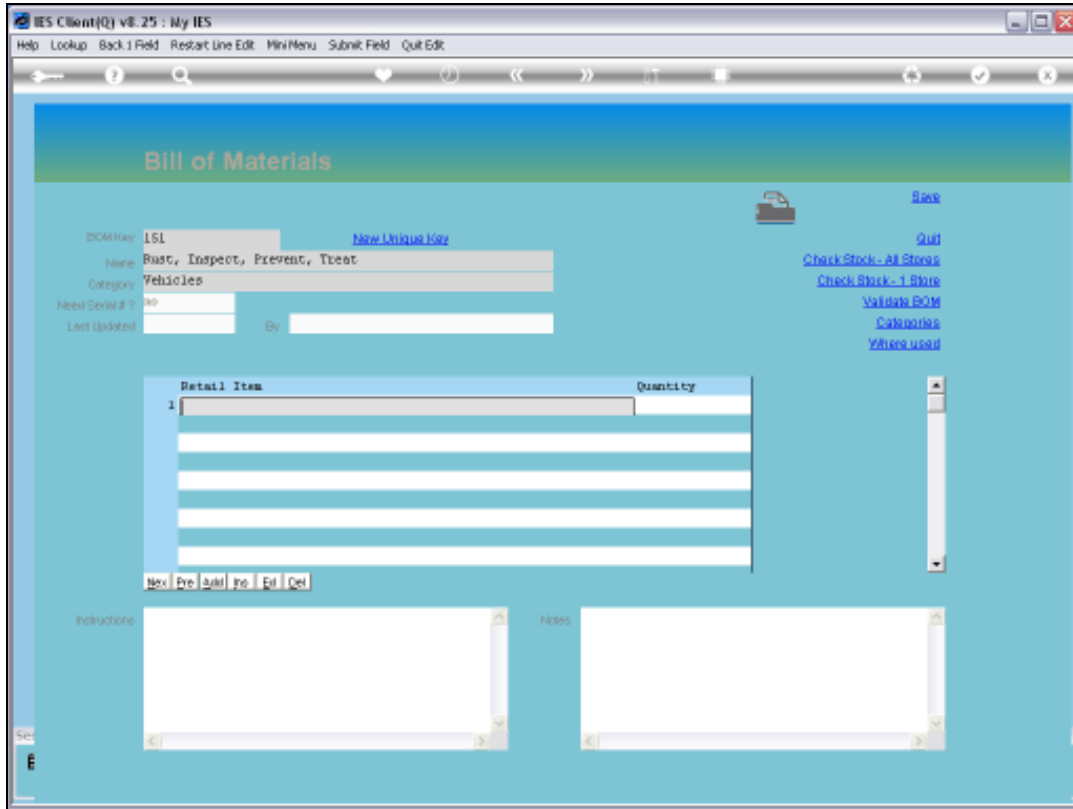
Slide 11

Slide notes:



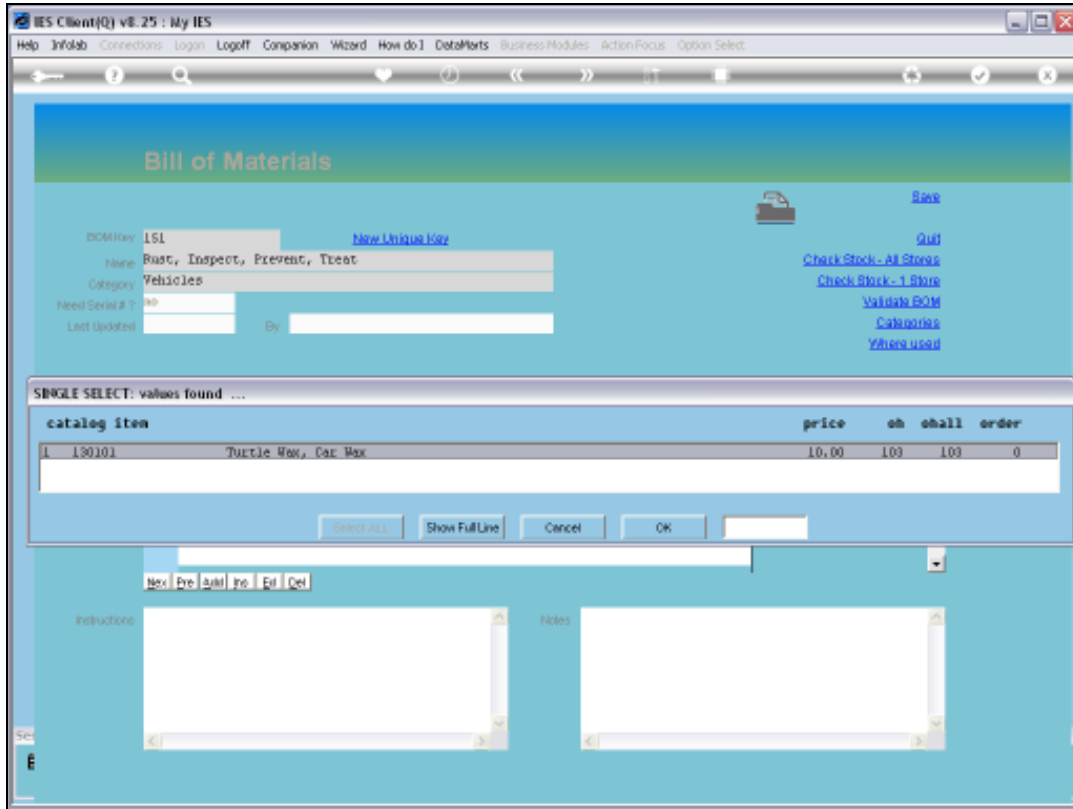
Slide 12

Slide notes: The content of a Bill, which must be at least 1 line, comes from the Retail Catalog, which may include both Stock Items and Service Items, e.g. Man Charges and other Service Charges.

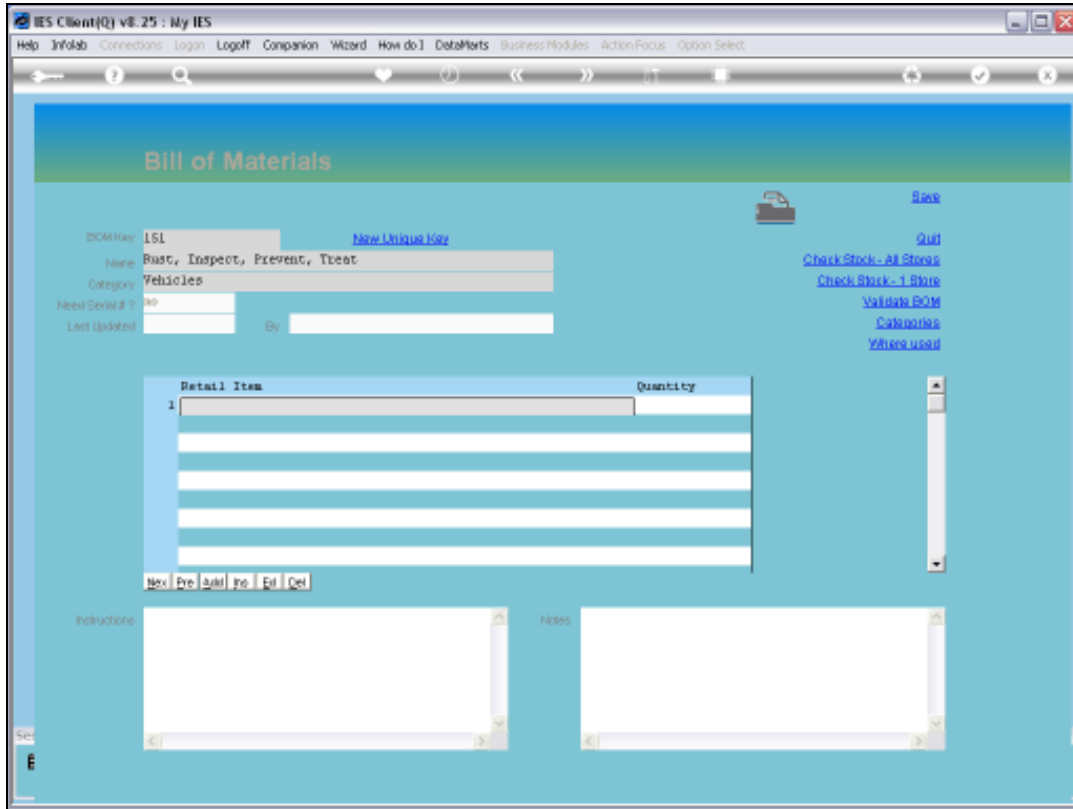


Slide 13

Slide notes:

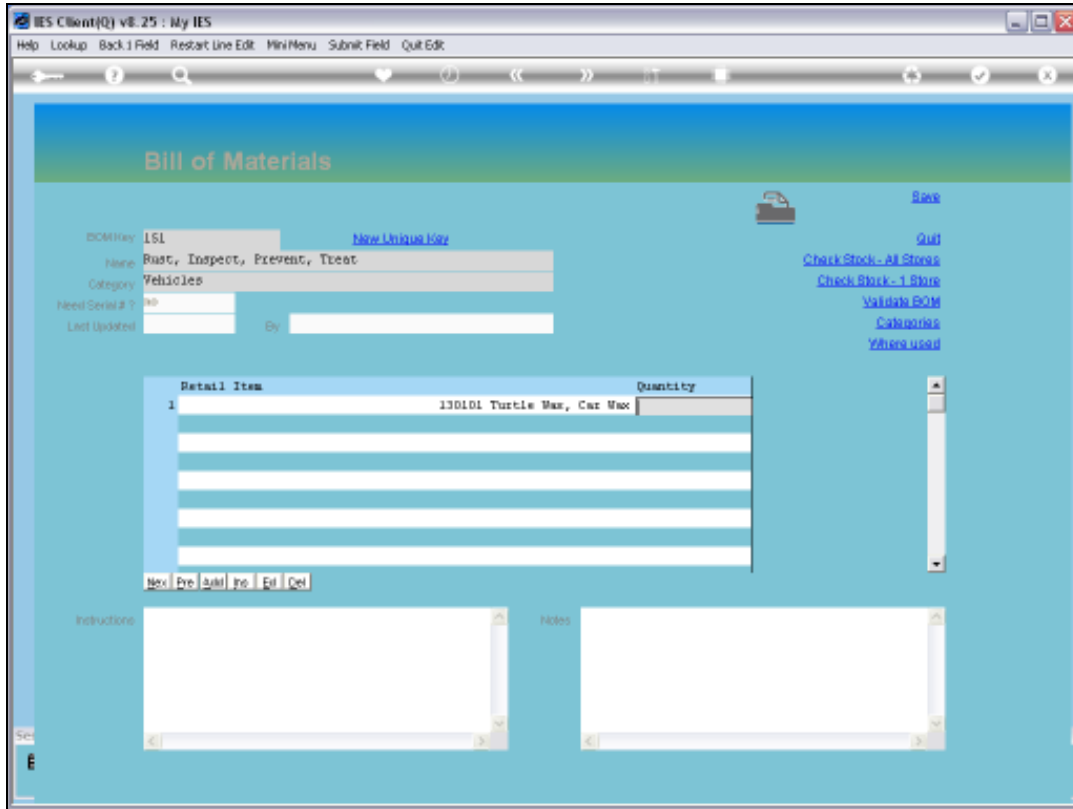


Slide 14
Slide notes:



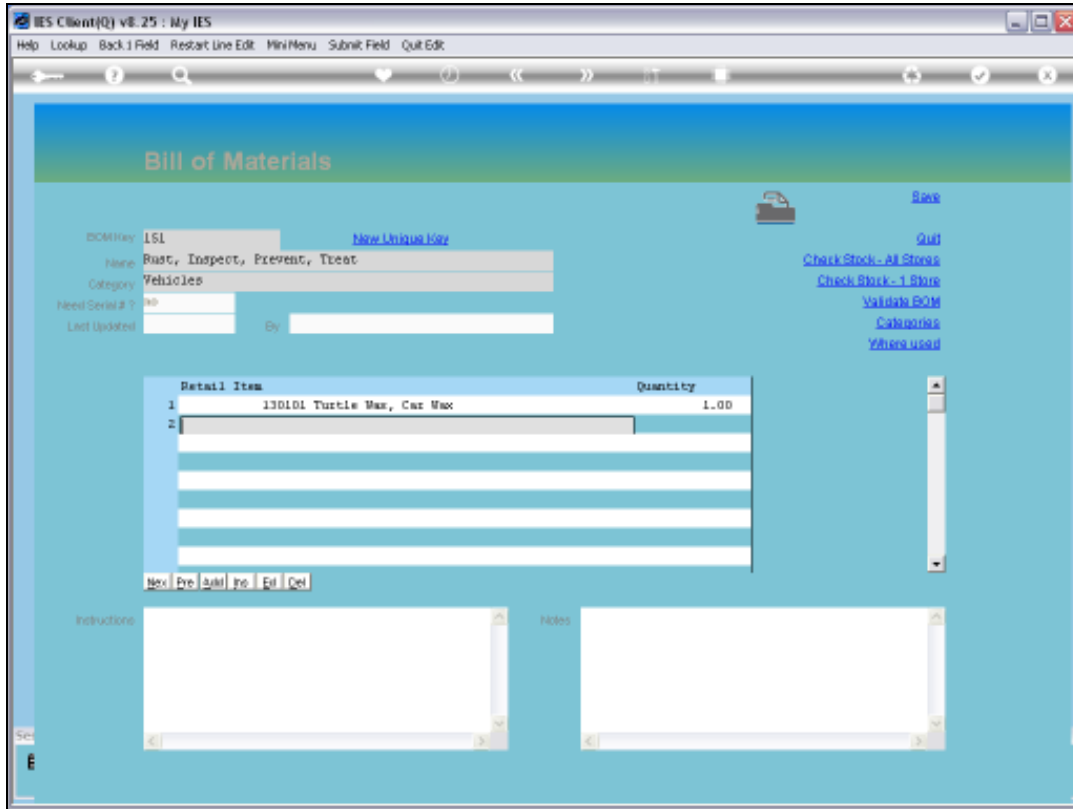
Slide 15

Slide notes:

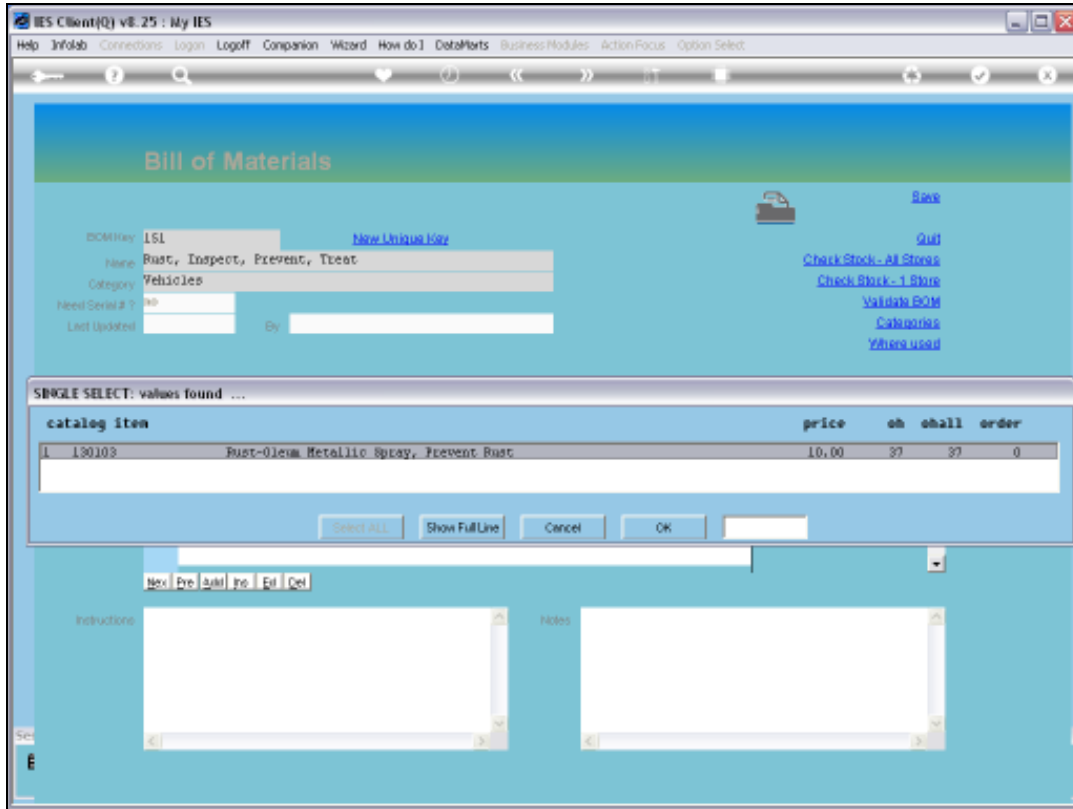


Slide 16

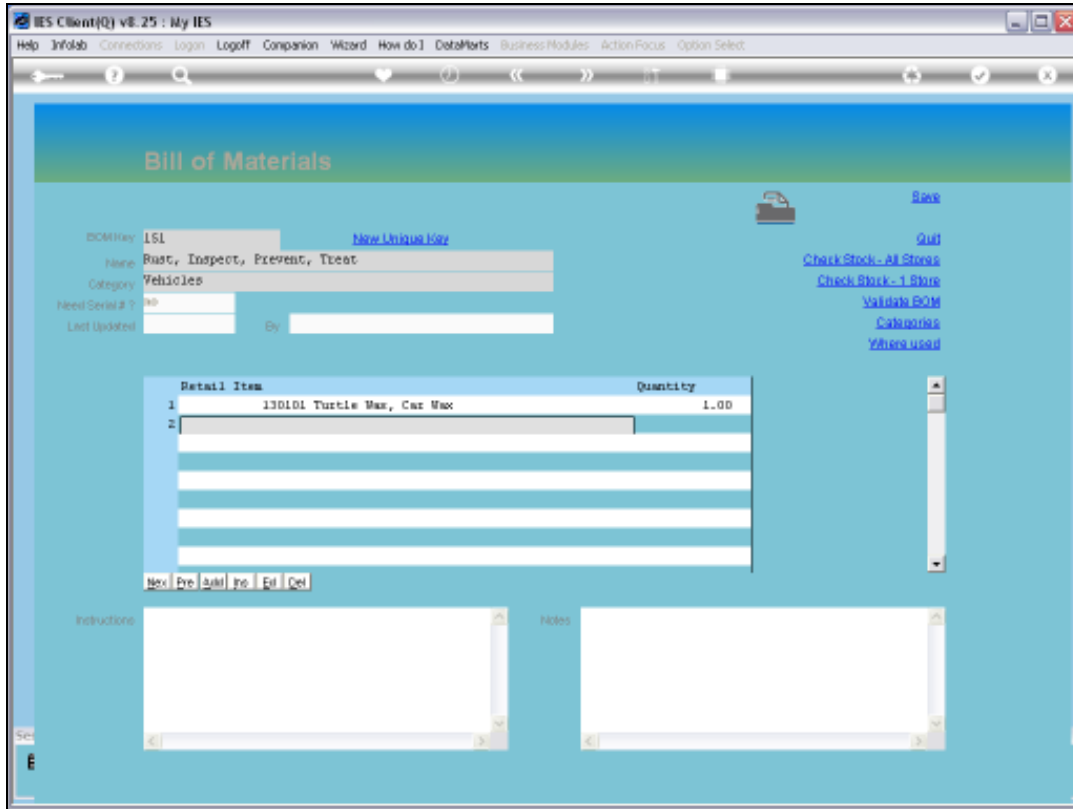
Slide notes:



Slide 17
Slide notes:

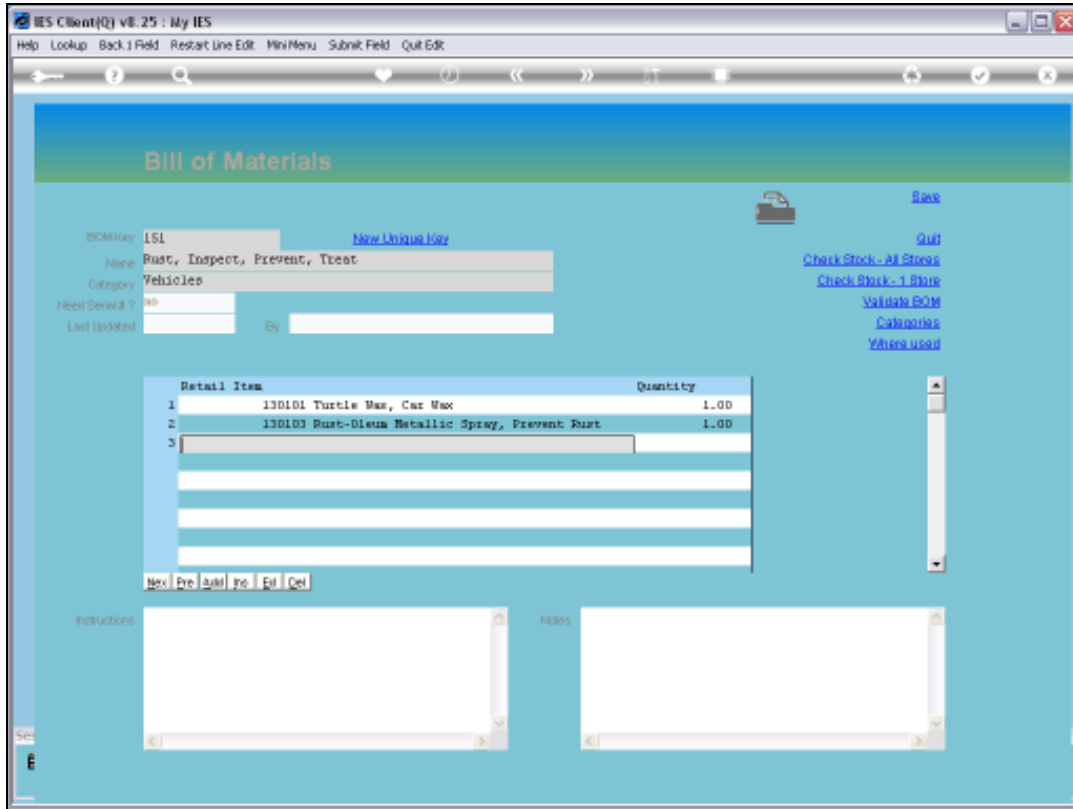


Slide 18
Slide notes:

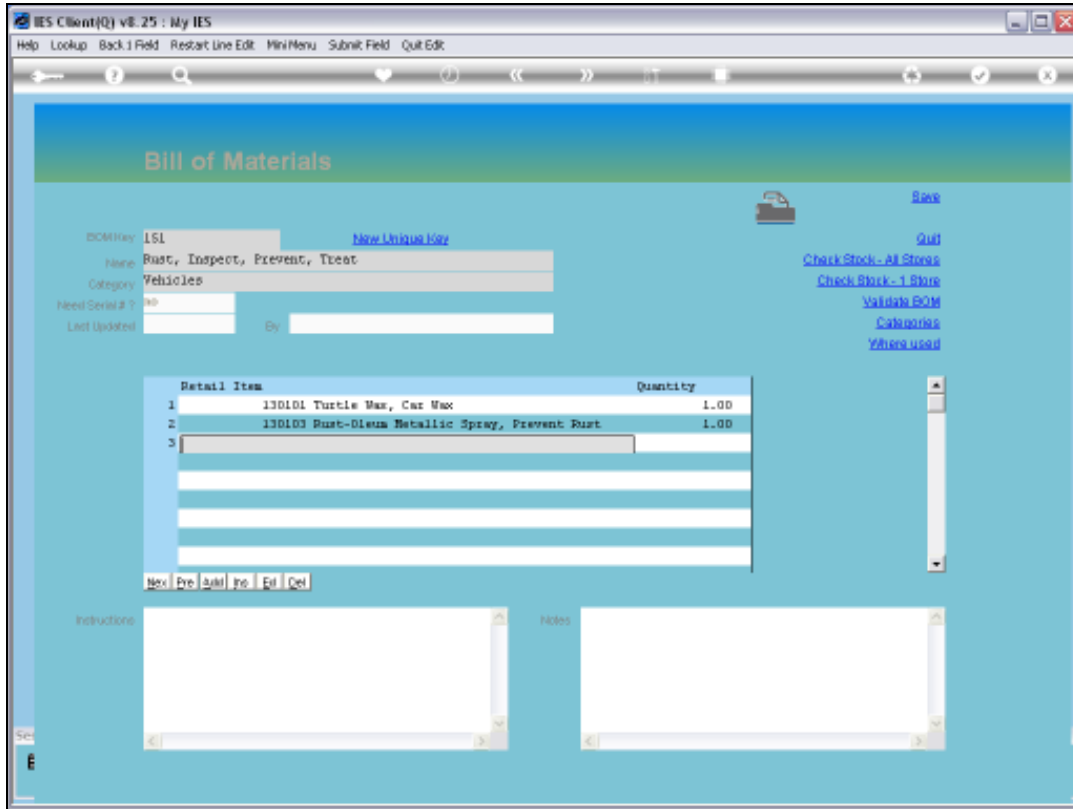


Slide 19

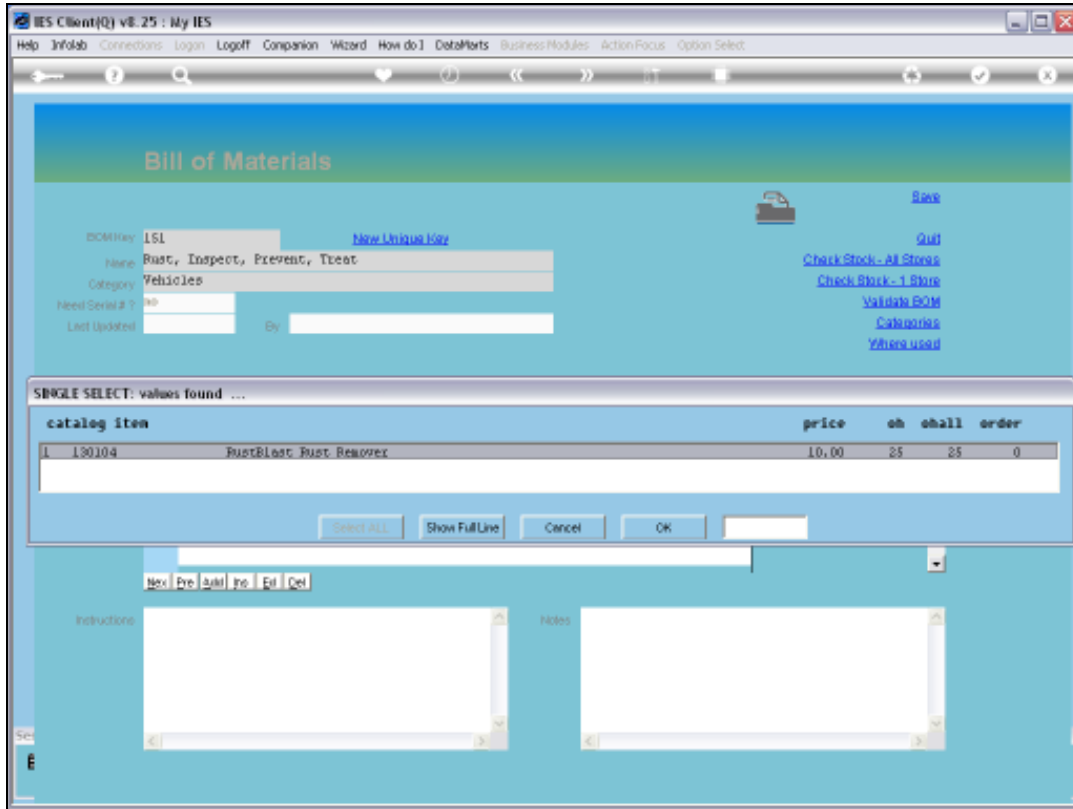
Slide notes:



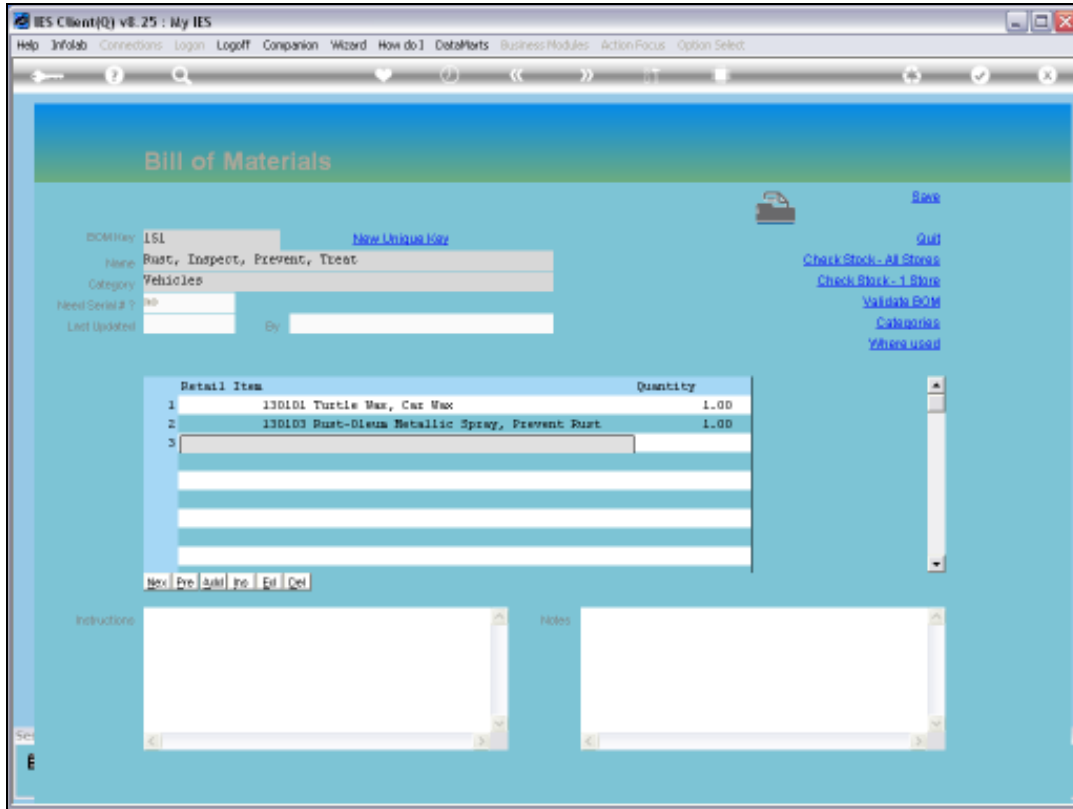
Slide 20
Slide notes:



Slide 21
Slide notes:

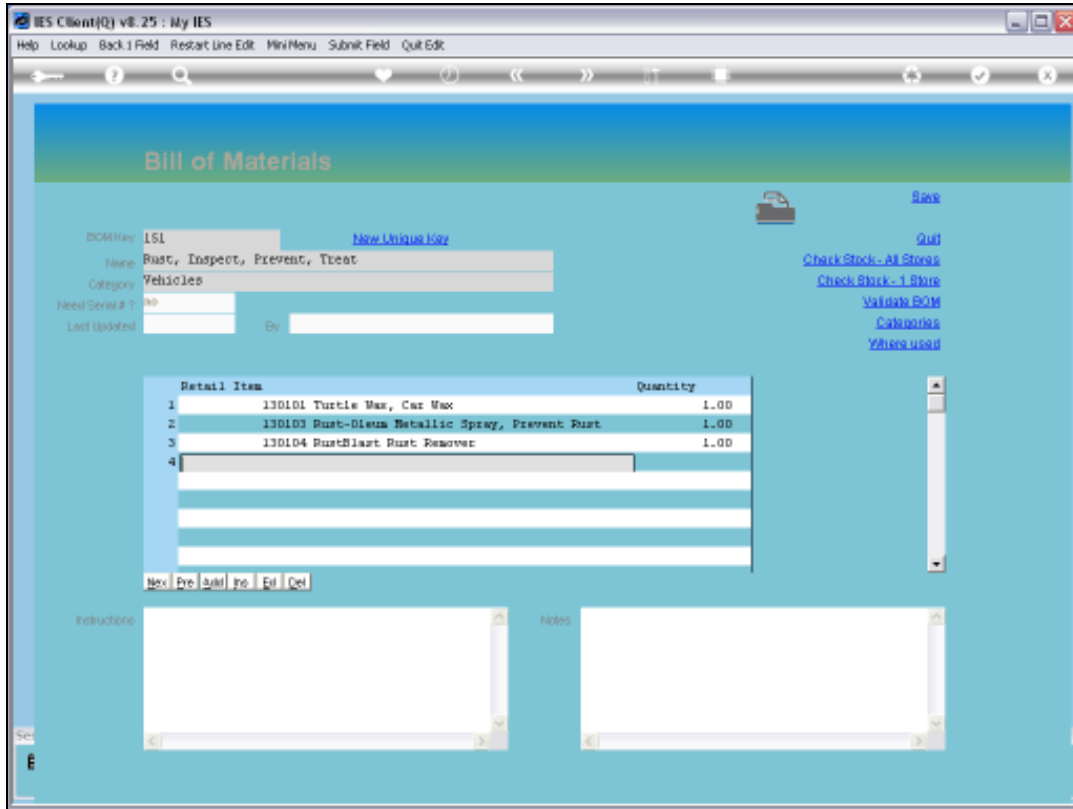


Slide 22
Slide notes:

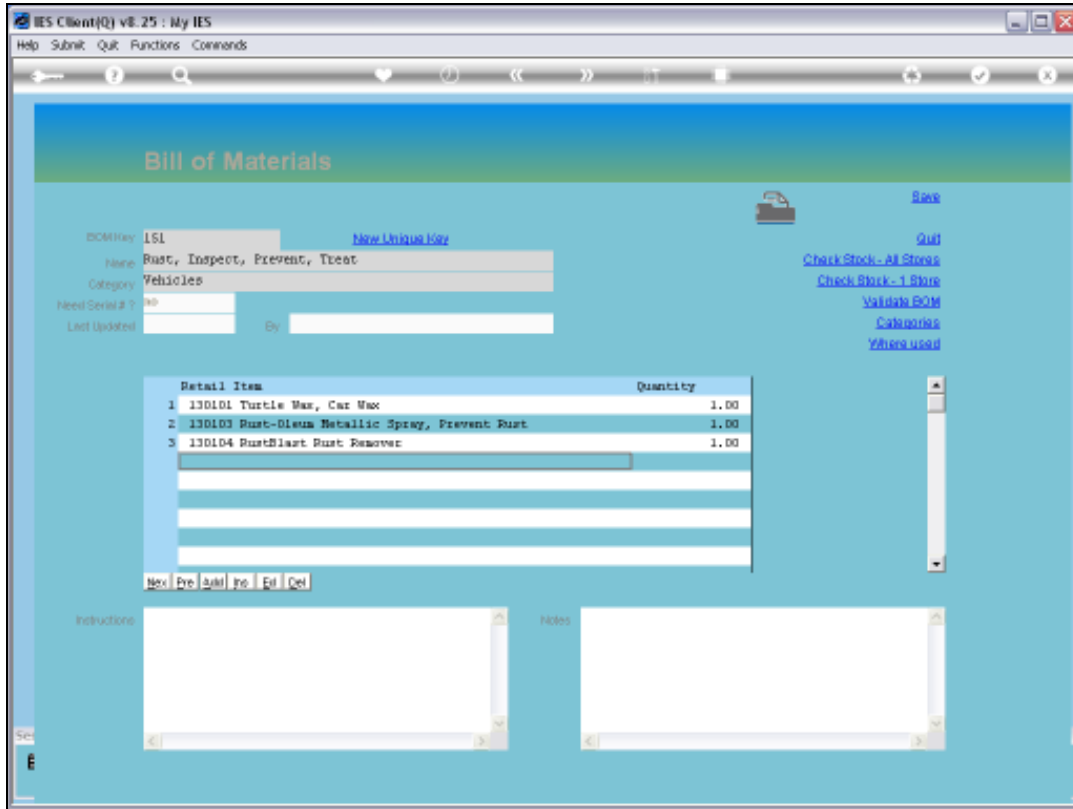


Slide 23

Slide notes: We now have all the required content on our Bill for Rust Treatment on our Vehicles.

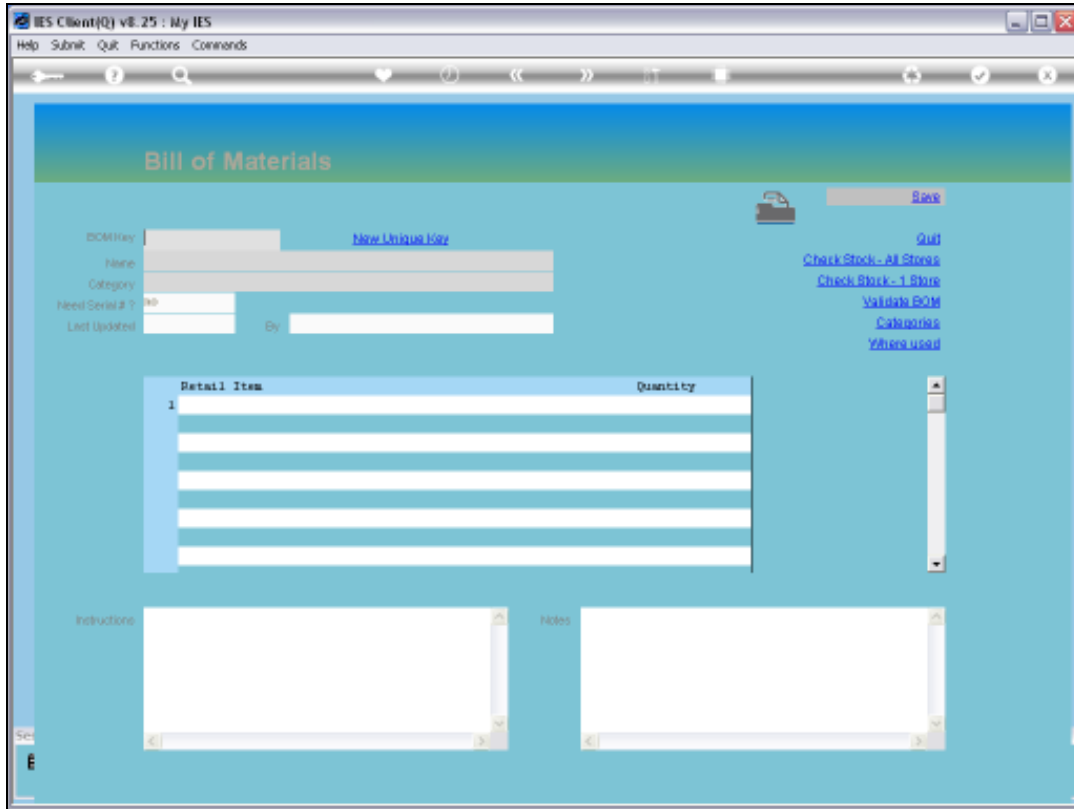


Slide 24
Slide notes:



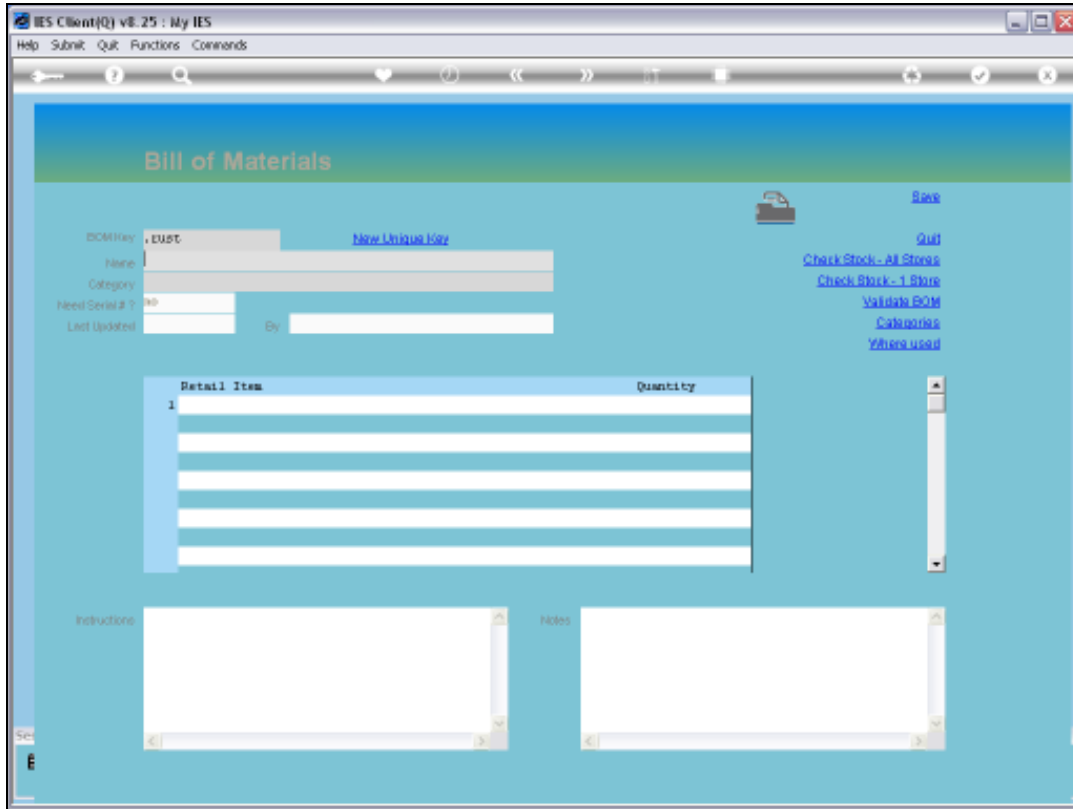
Slide 25

Slide notes: At this stage, we can SAVE the new Bill, so that we can retrieve it again and see how we work further with an existing Bill.



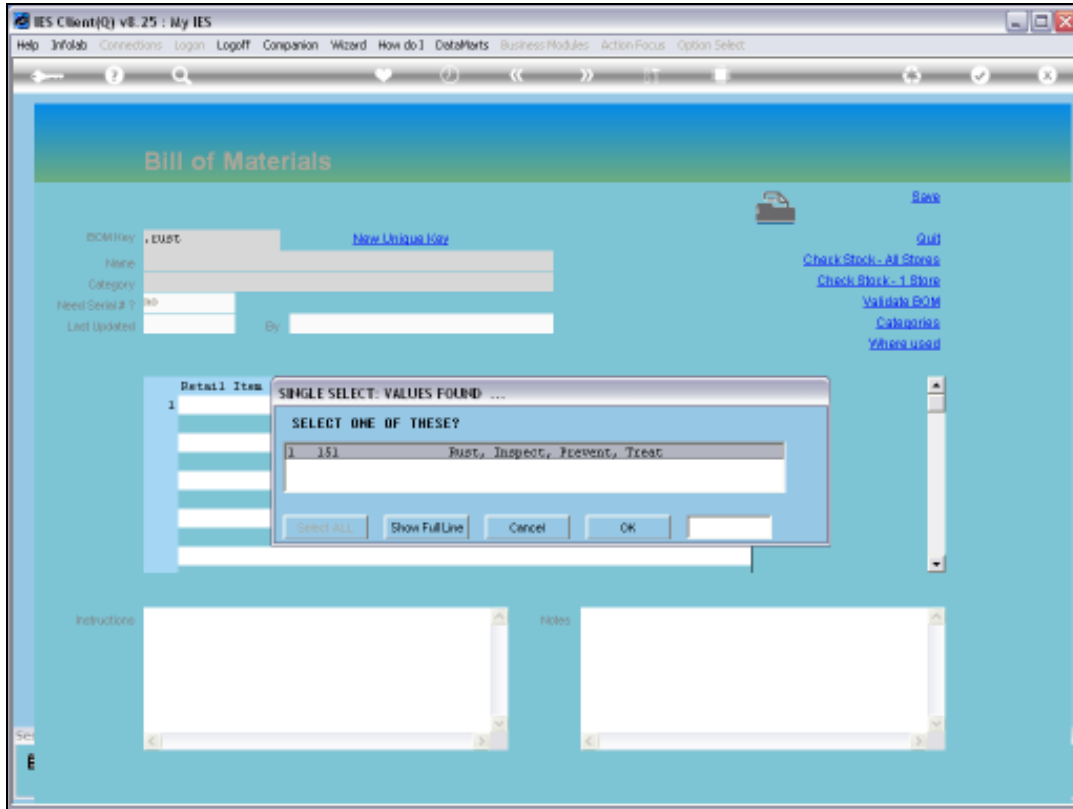
Slide 26

Slide notes: We can retrieve an existing Bill with any of the usual lookup methods. In this case, we'll do it with a keyword.



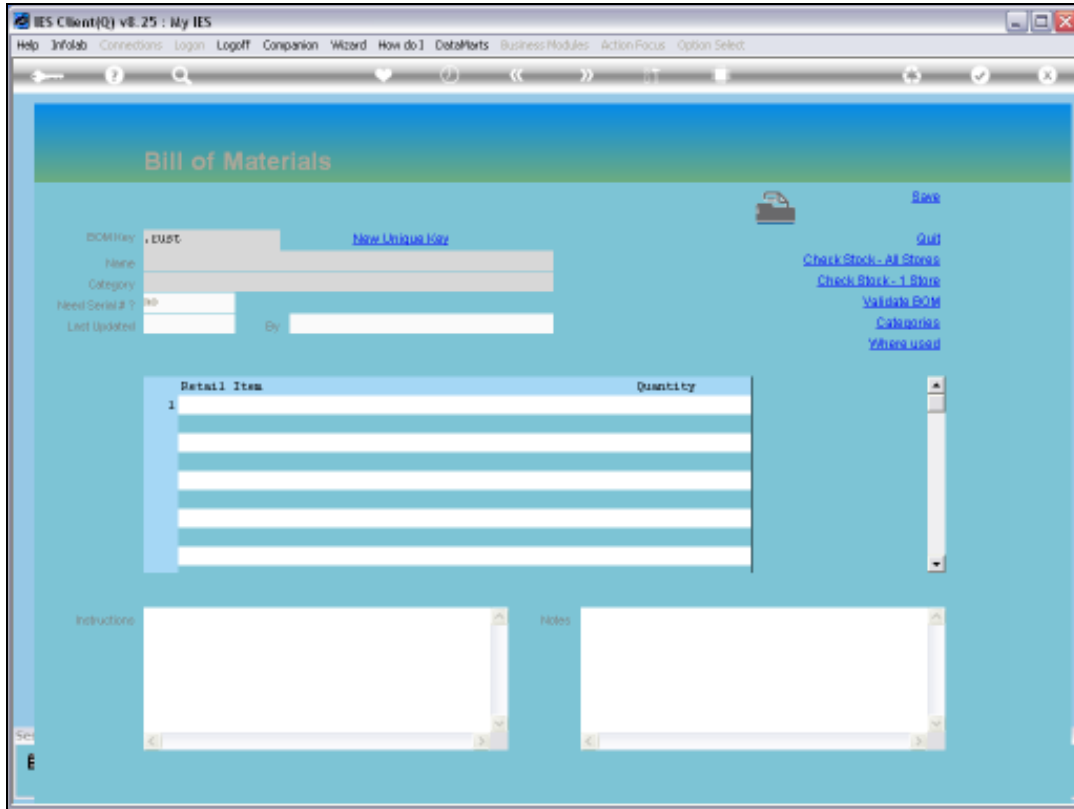
Slide 27

Slide notes:



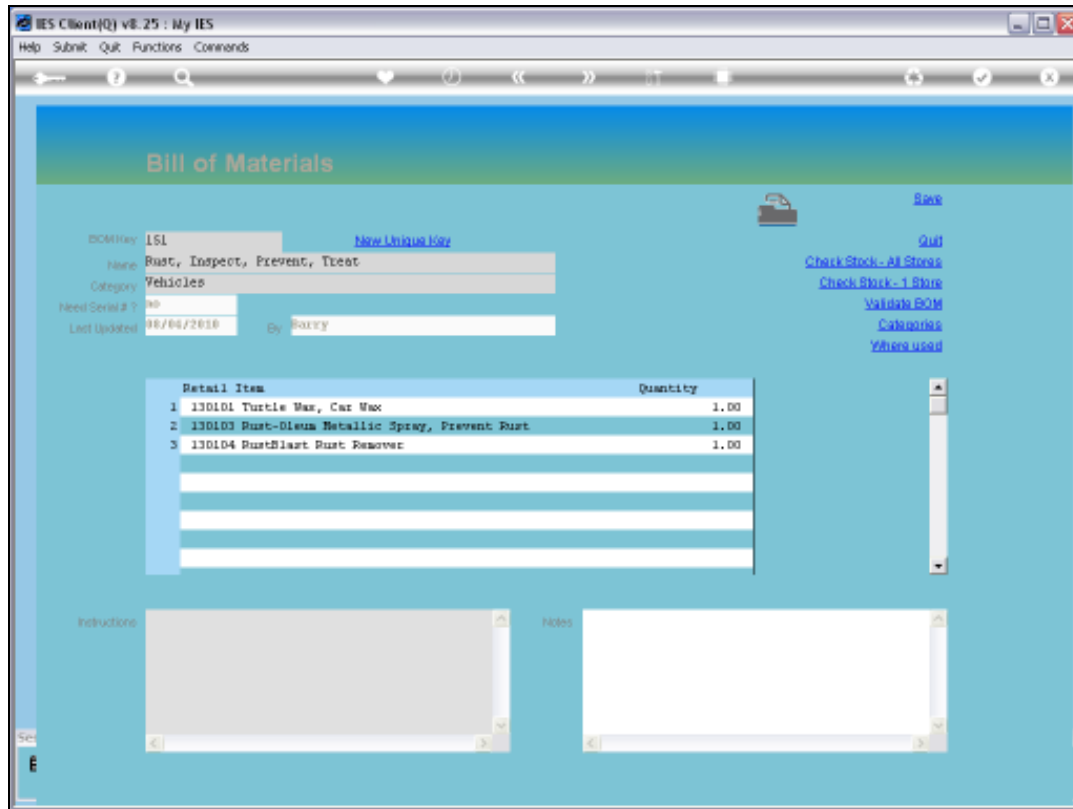
Slide 28

Slide notes:



Slide 29

Slide notes:



Slide 30

Slide notes: An existing Bill can be changed as to content, and of course we have the optional fields for Instructions and Notes for cases where we need to use those.

IES Client v8.25 : My IES

Help Submit Quit Functions Commands

Bill of Materials

Search: []

Save

Quit

Check Stock - All Stores

Check Stock - 1 Store

View BOM

Categories

Where used

BCM Key: 151 [New Unique Key](#)

Name: Rust, Inspect, Prevent, Treat

Category: Vehicles

Need Serial # ? []

Last Updated: 08/04/2010 By: ROLLY

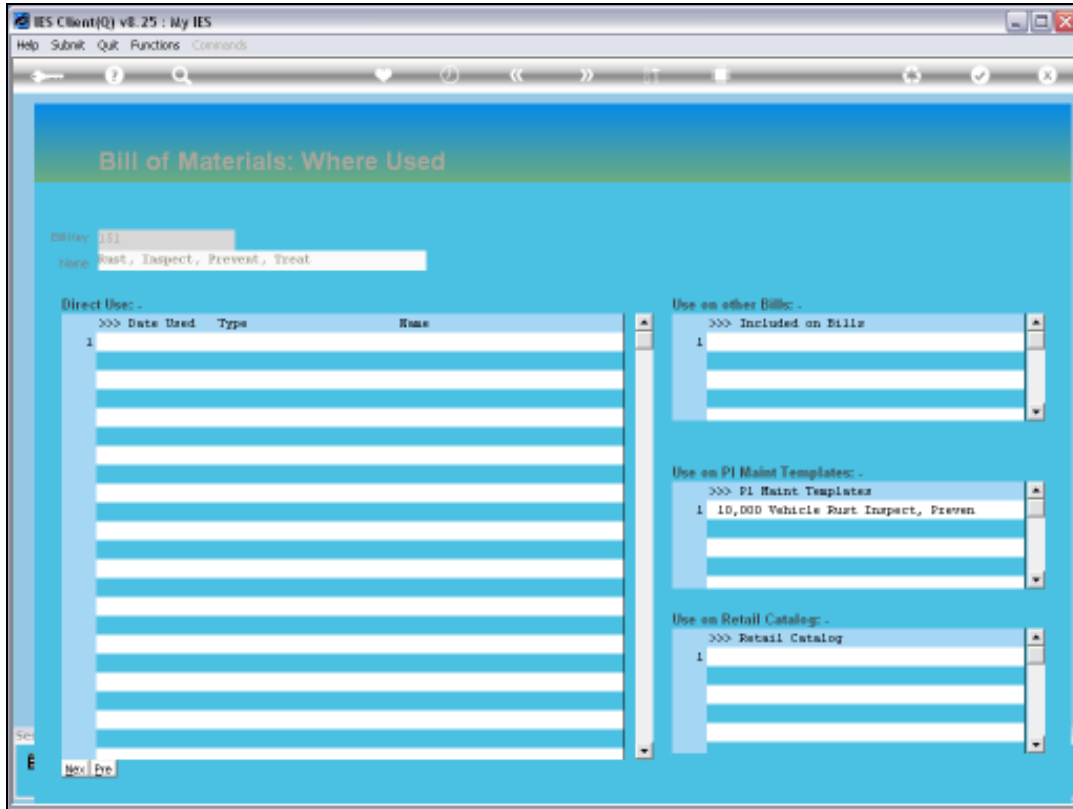
Retail Item	Quantity
1 130101 Turtle Wax, Car Wax	1.00
2 130103 Rust-Dieux Metallic Spray, Prevent Rust	1.00
3 130104 RustStart Rust Remover	1.00

Instructions: []

Notes: []

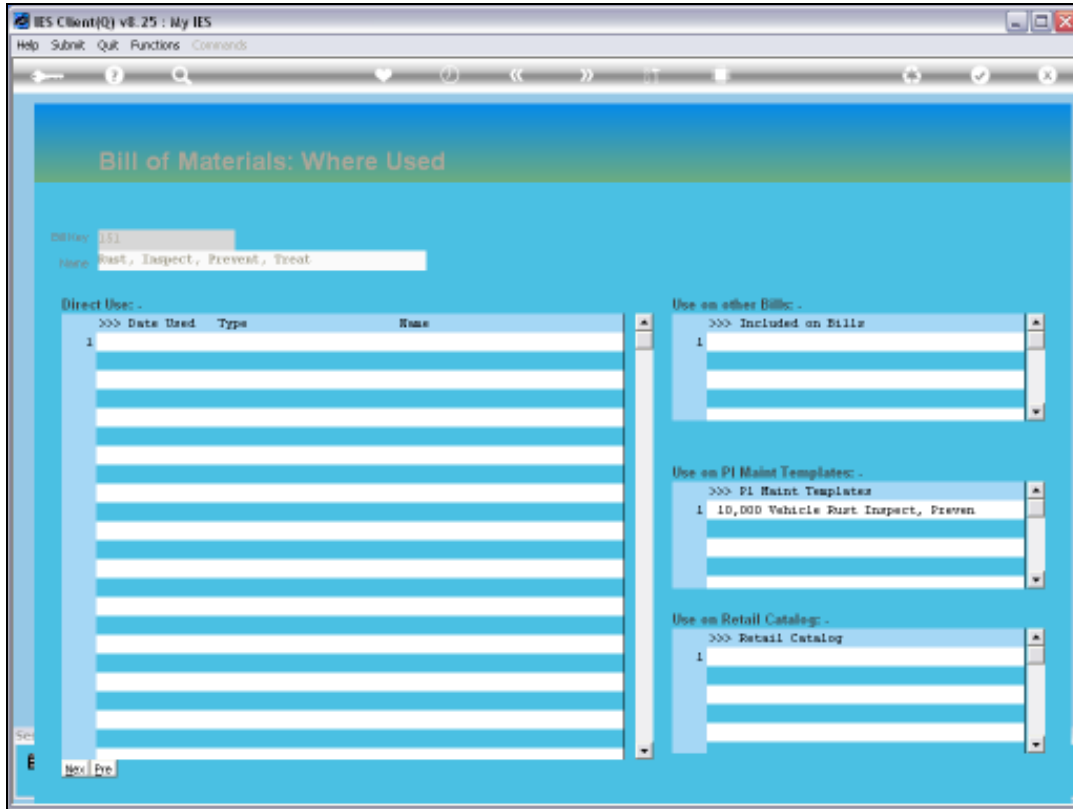
Slide 31

Slide notes: The 'where used' function will reveal how the Bill is used in the system.



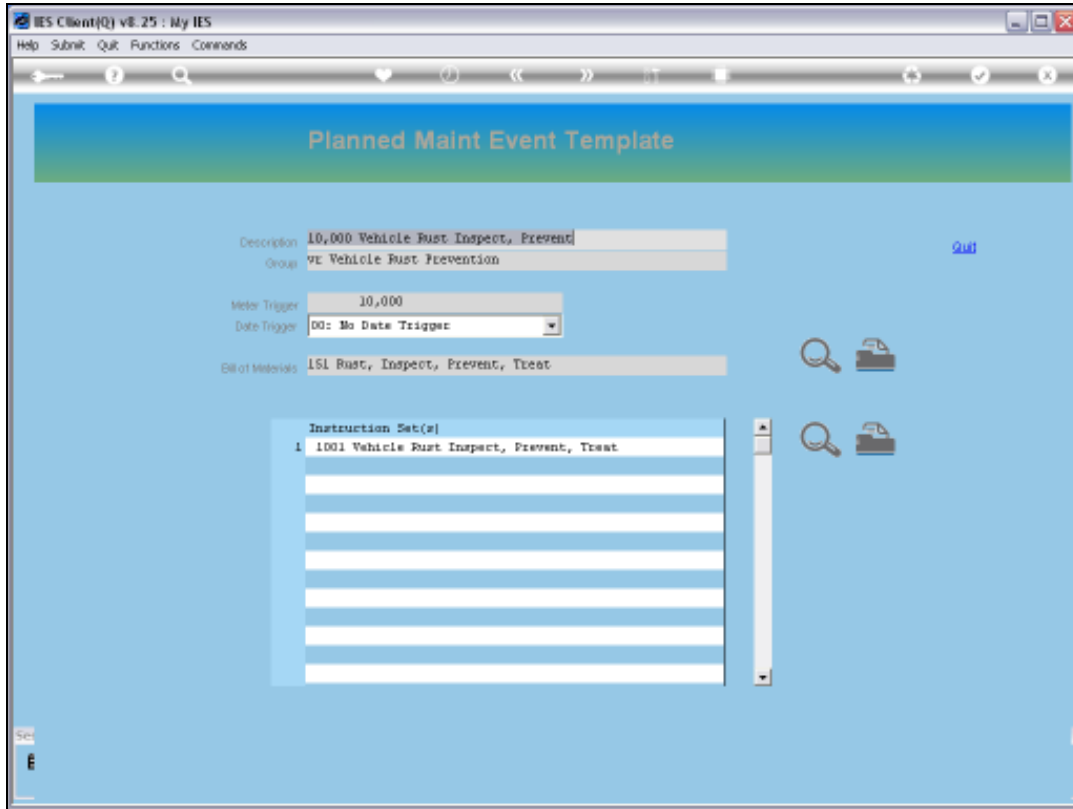
Slide 32

Slide notes:



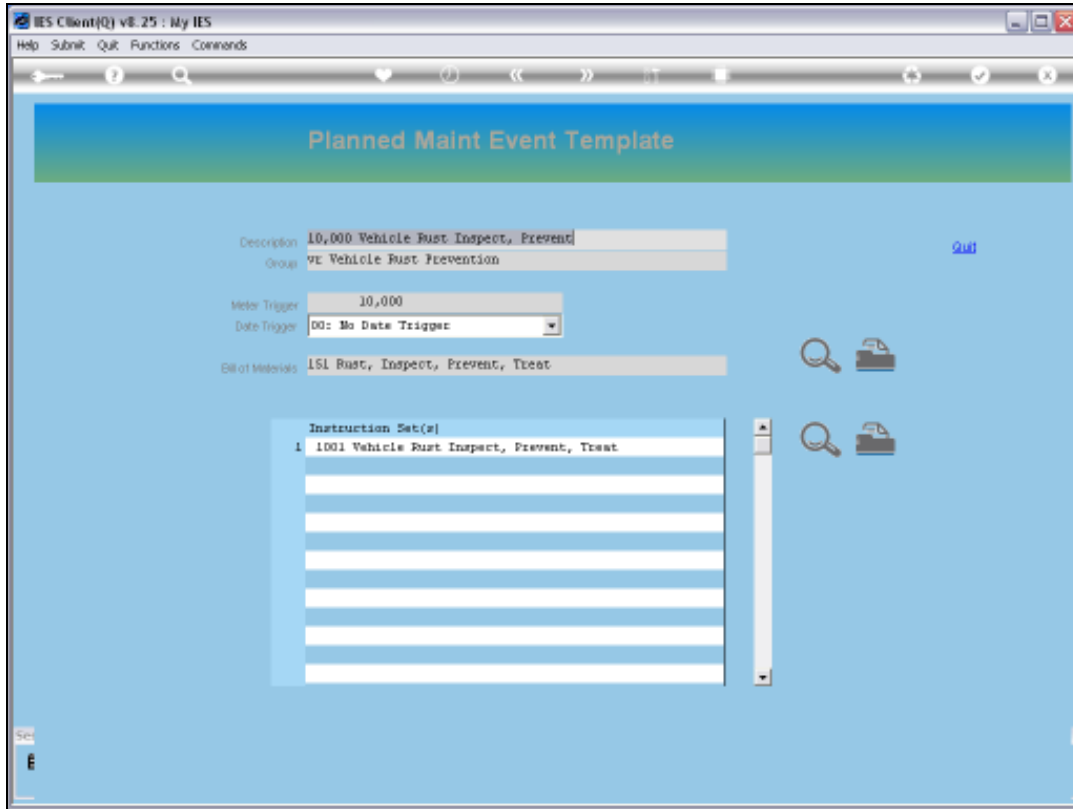
Slide 33

Slide notes: This is a new Bill, and there is not much history, but it does show that this Bill is included on a Planned Maintenance Event Template, and of course, wherever it's usage is shown, we can drill into the object or detail of that usage.

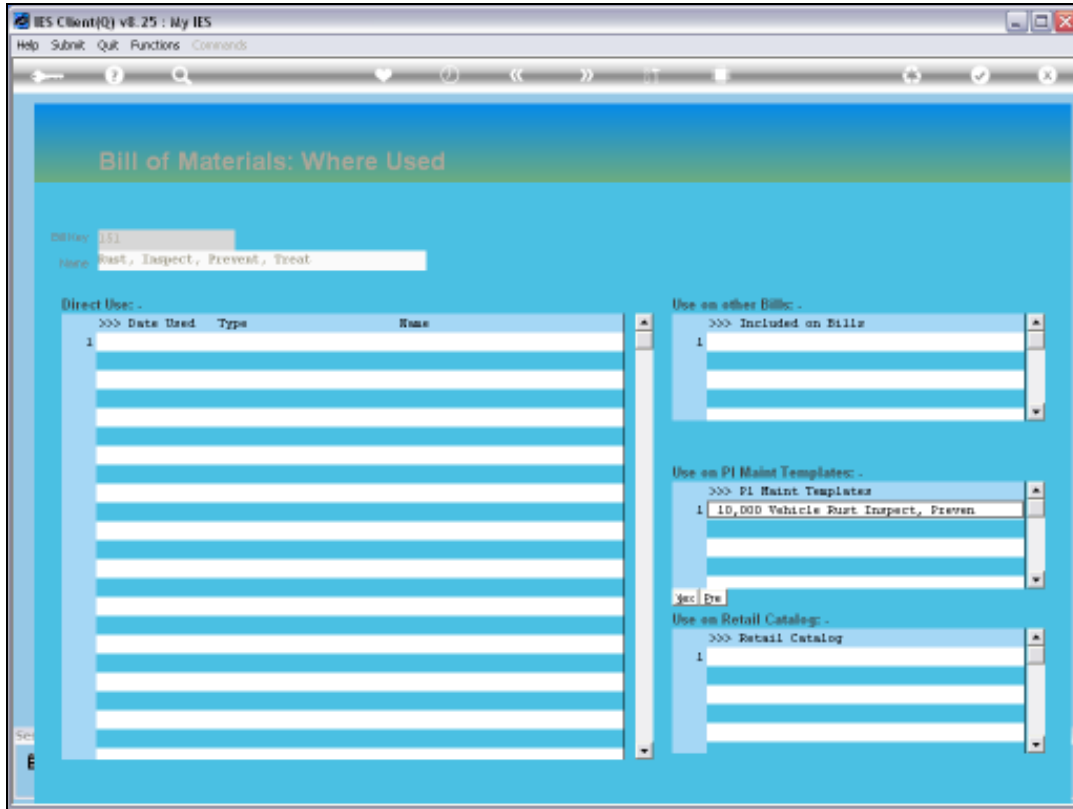


Slide 34

Slide notes: Here we see the Event Template that uses the current Bill.

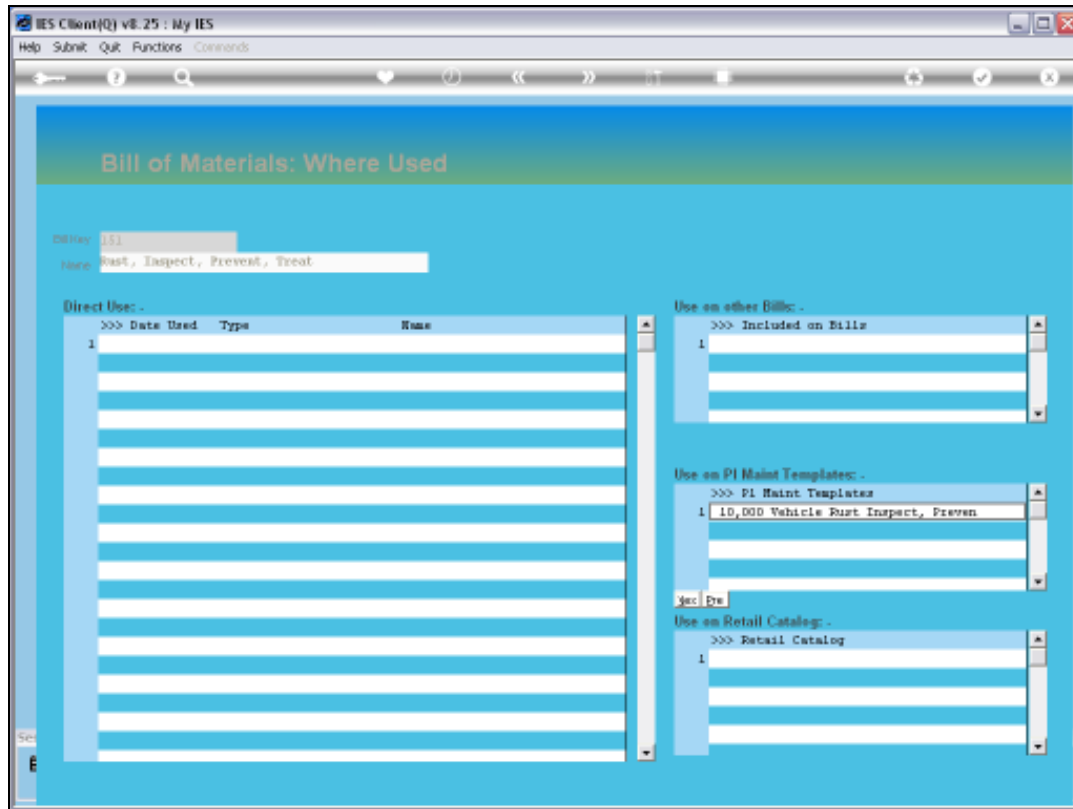


Slide 35
Slide notes:



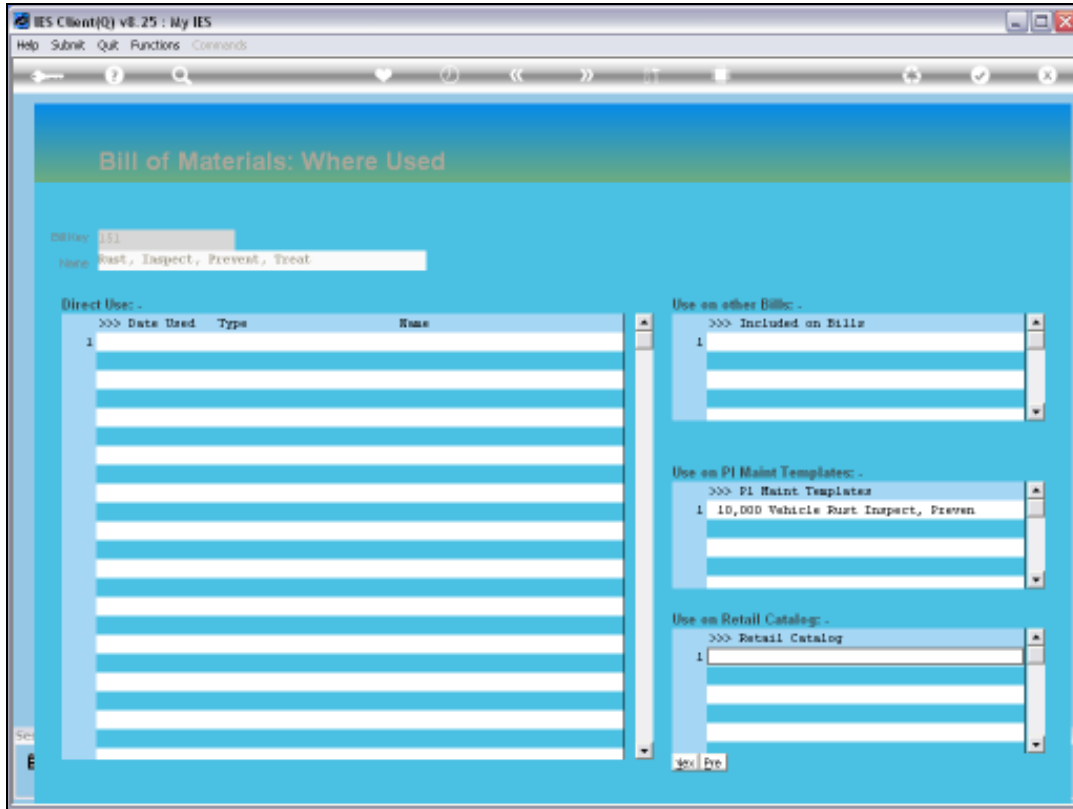
Slide 36

Slide notes:



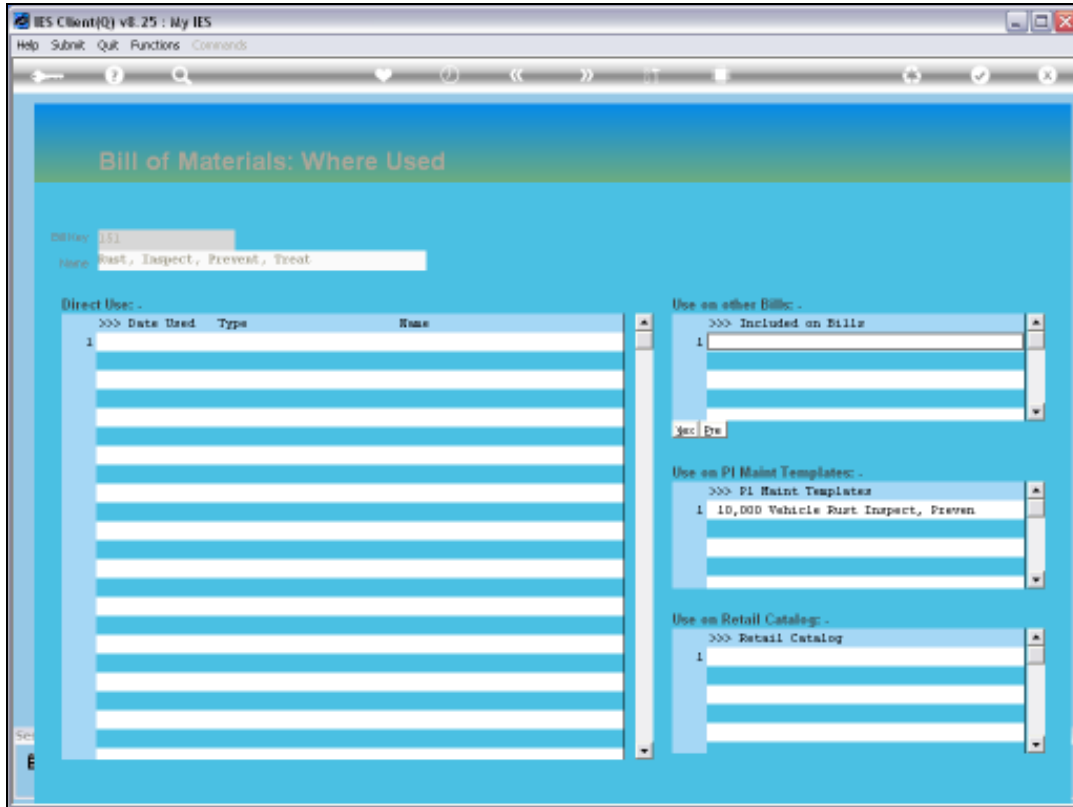
Slide 37

Slide notes: The Bill can also be used in the Retail Catalog, on other Bills, etc.



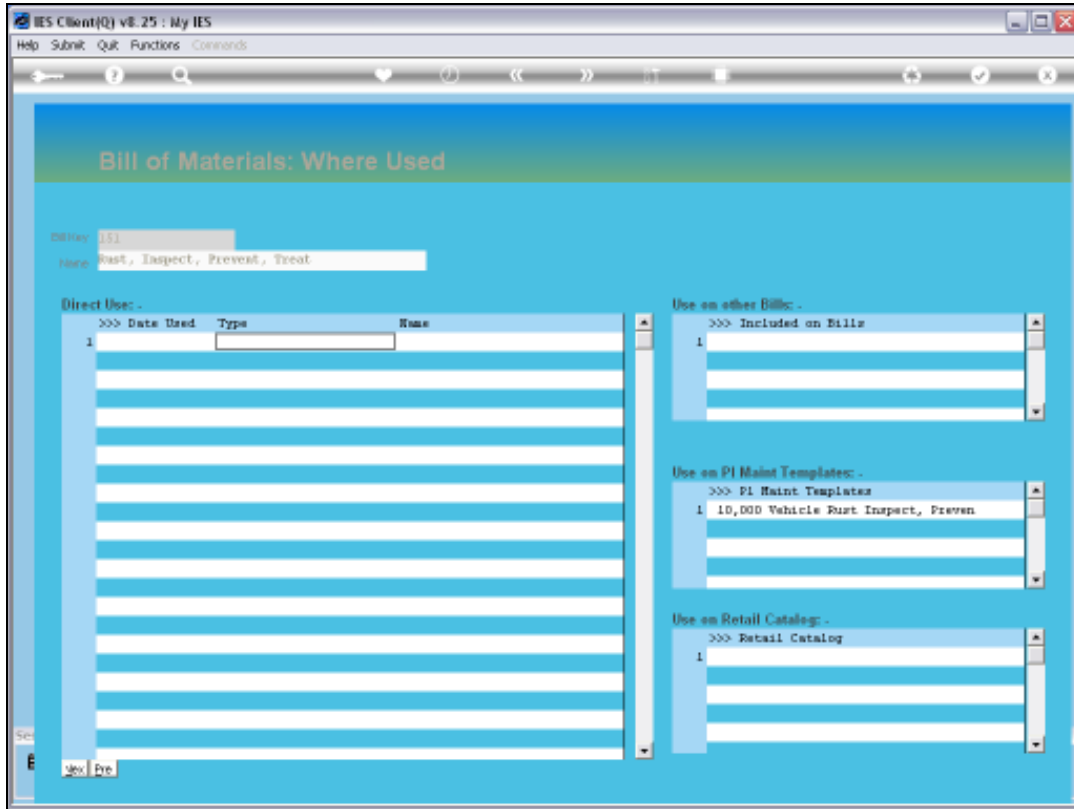
Slide 38

Slide notes:



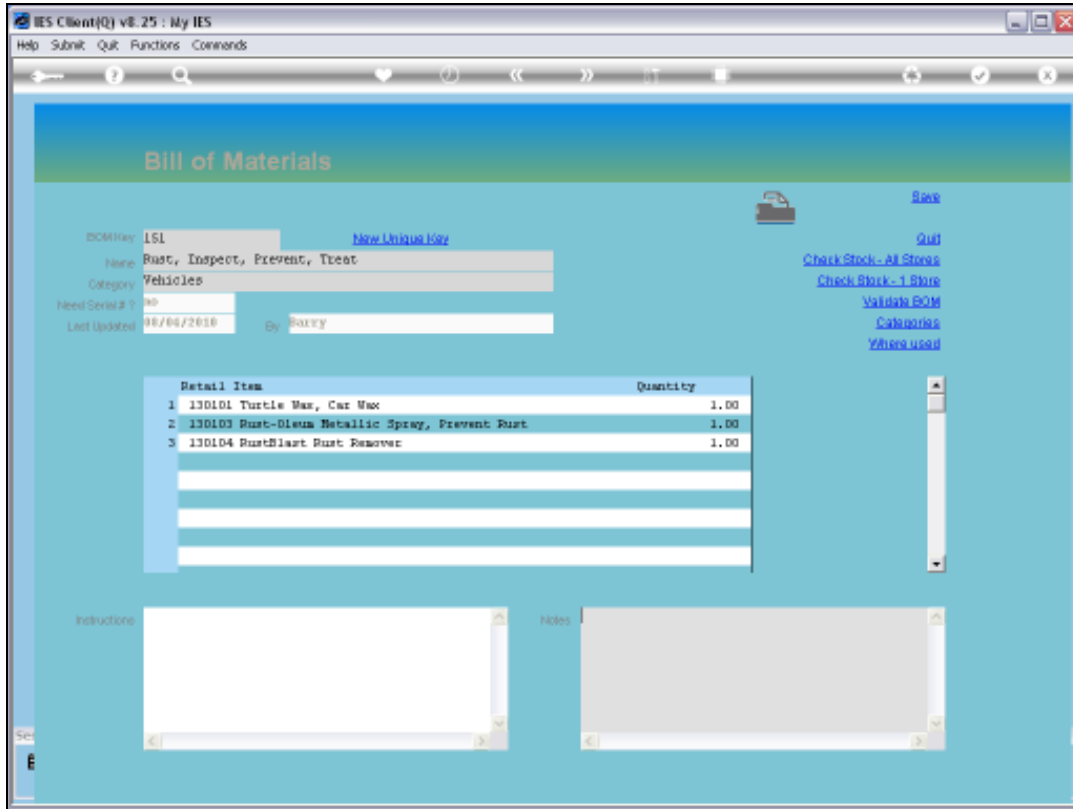
Slide 39

Slide notes: And direct usage may include Manufacture or any other event where someone loads this Bill, in which case it will show up here as history that we can inspect.

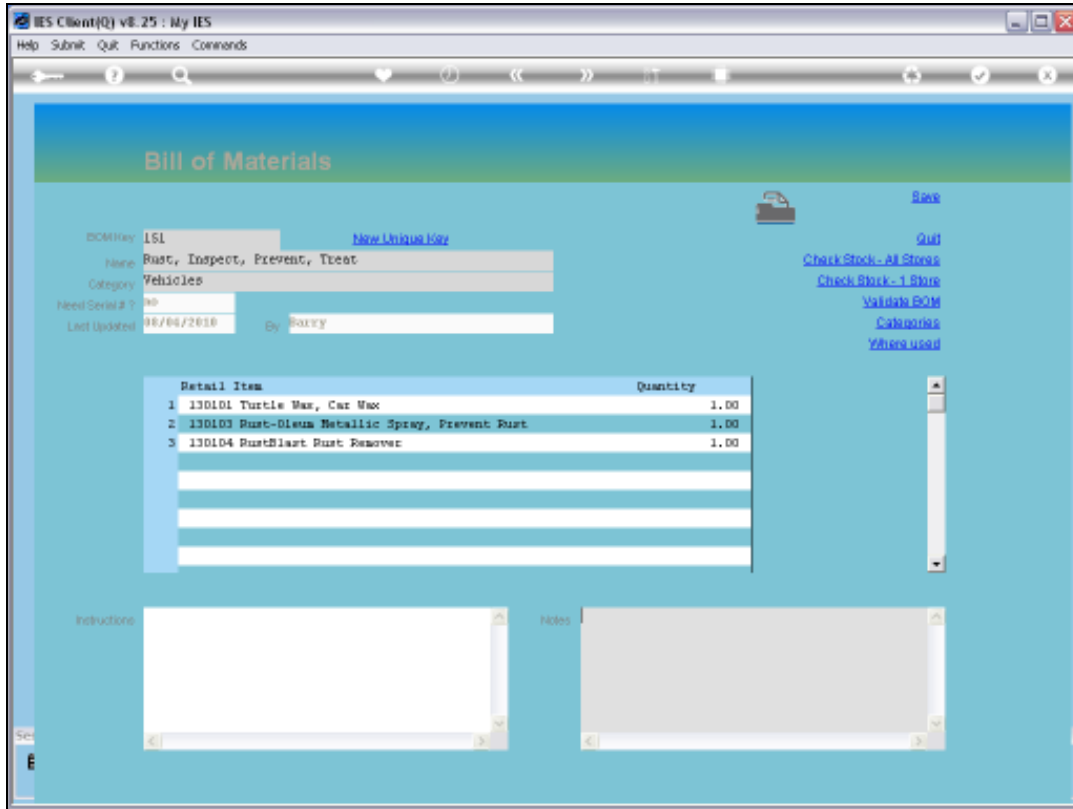


Slide 40

Slide notes:

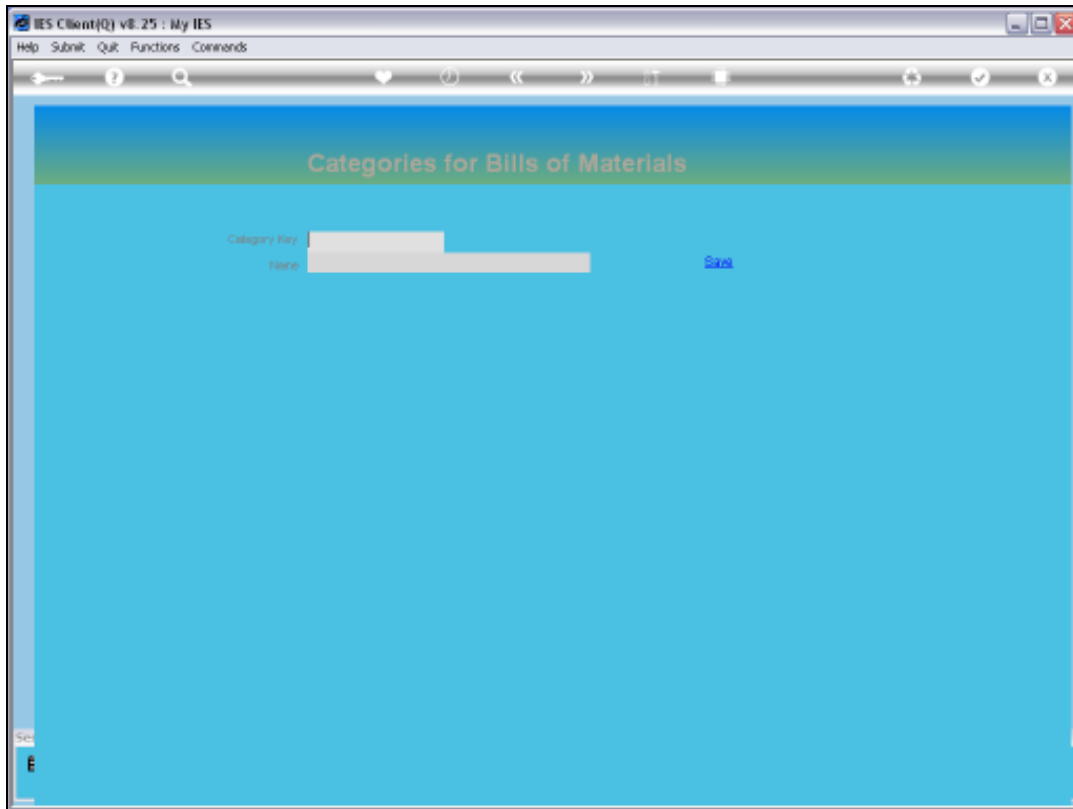


Slide 41
Slide notes:



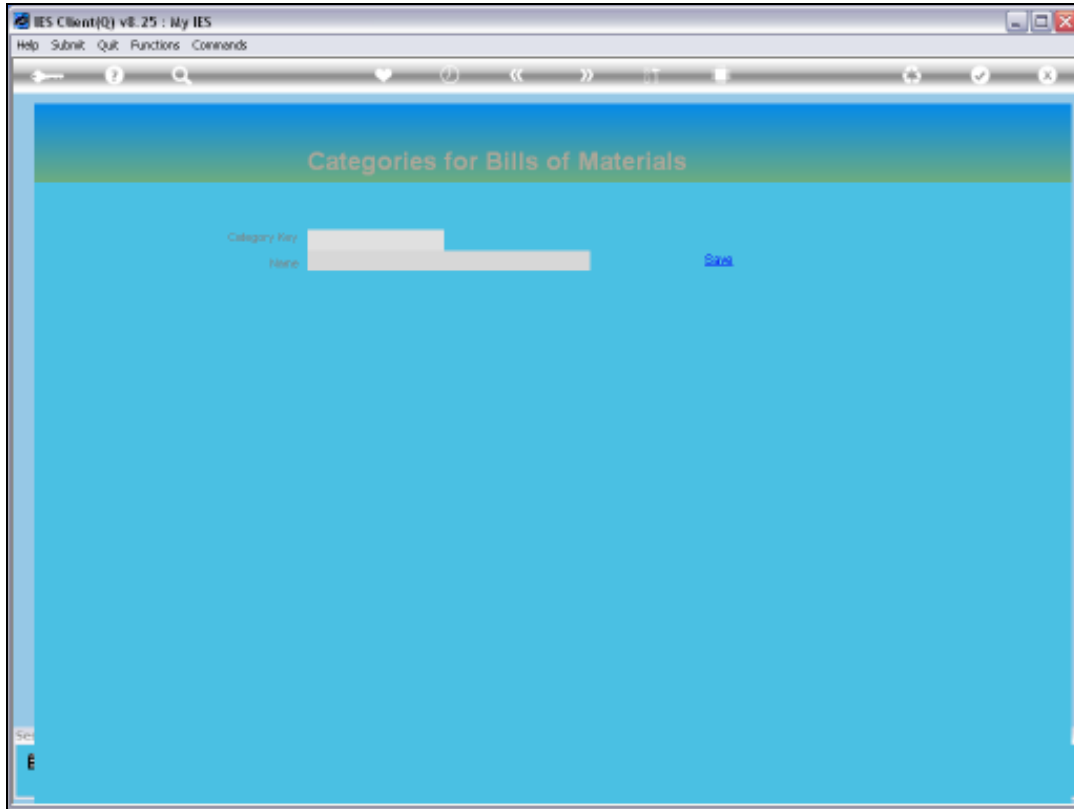
Slide 42

Slide notes: Categories for Bills are used to organize the Bills, and every Bill belongs to some Category.



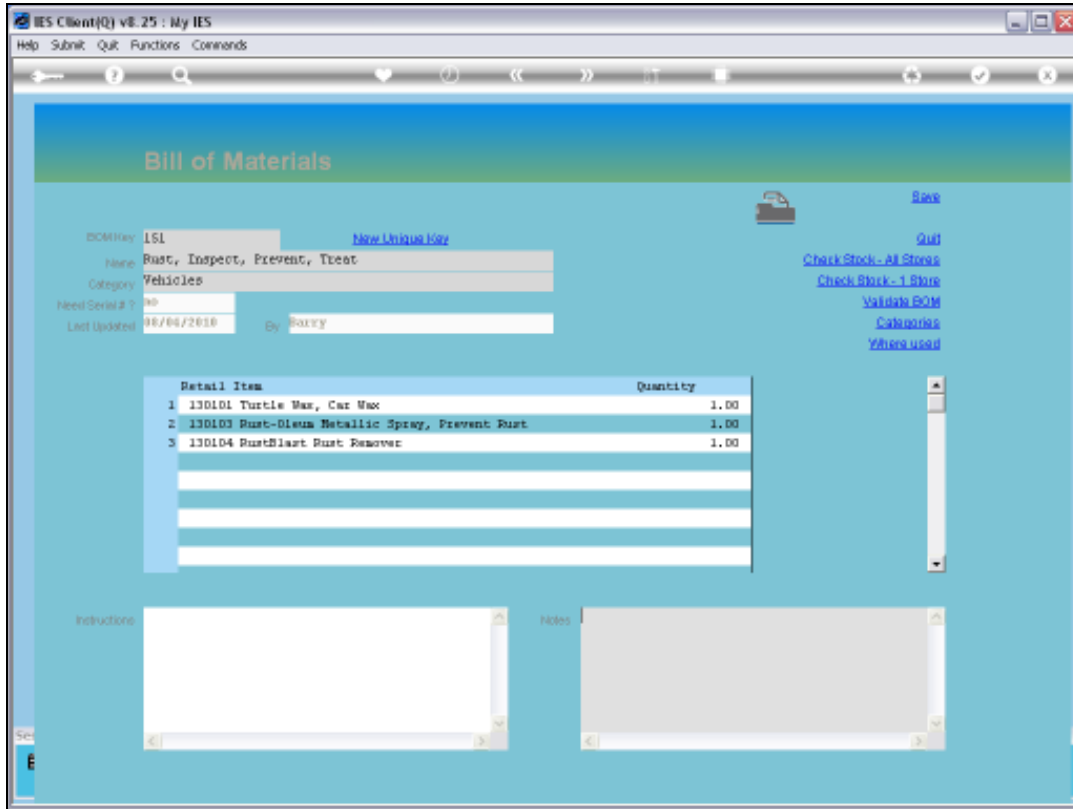
Slide 43

Slide notes: We can conveniently enter the Category definition object from any Bill, i.e. to make a new Category or redefine the name of an existing one.



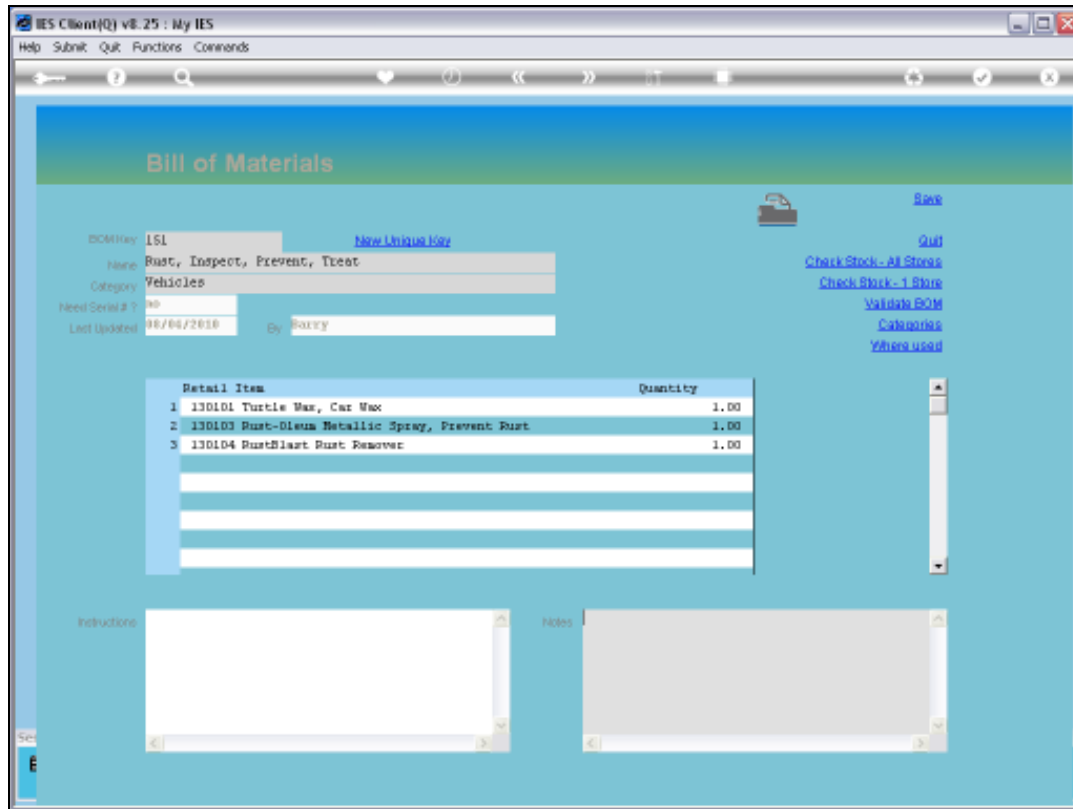
Slide 44

Slide notes:



Slide 45

Slide notes:

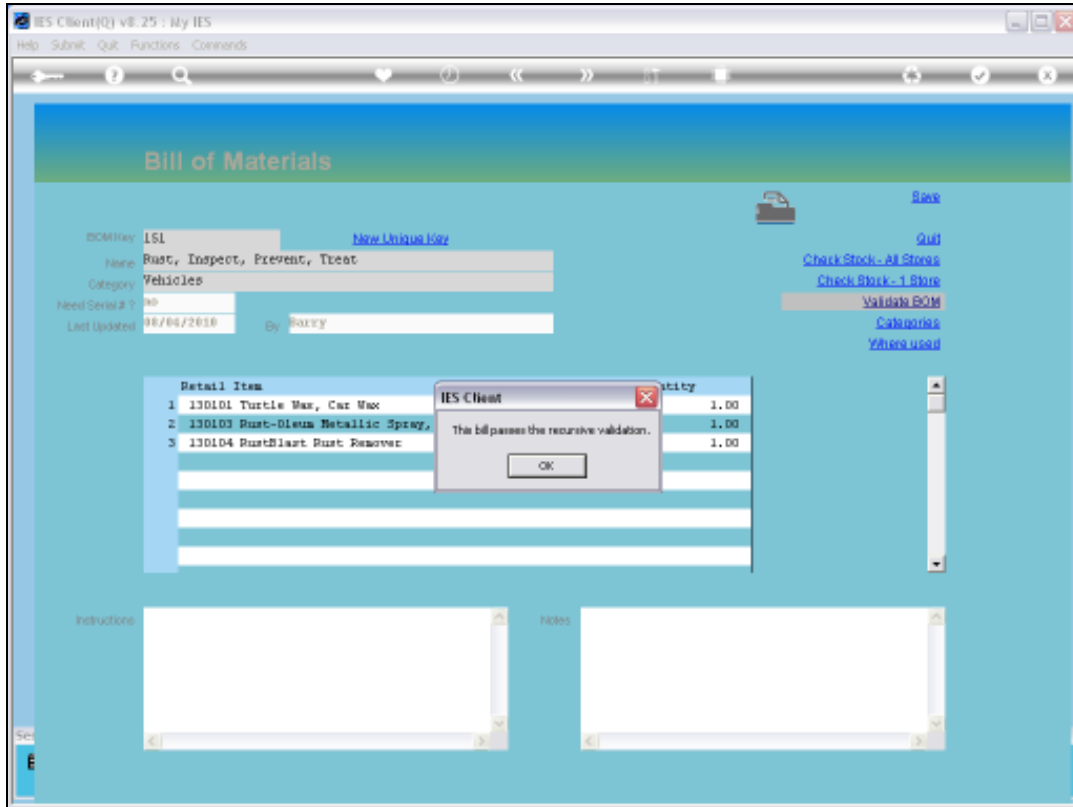


Slide 46

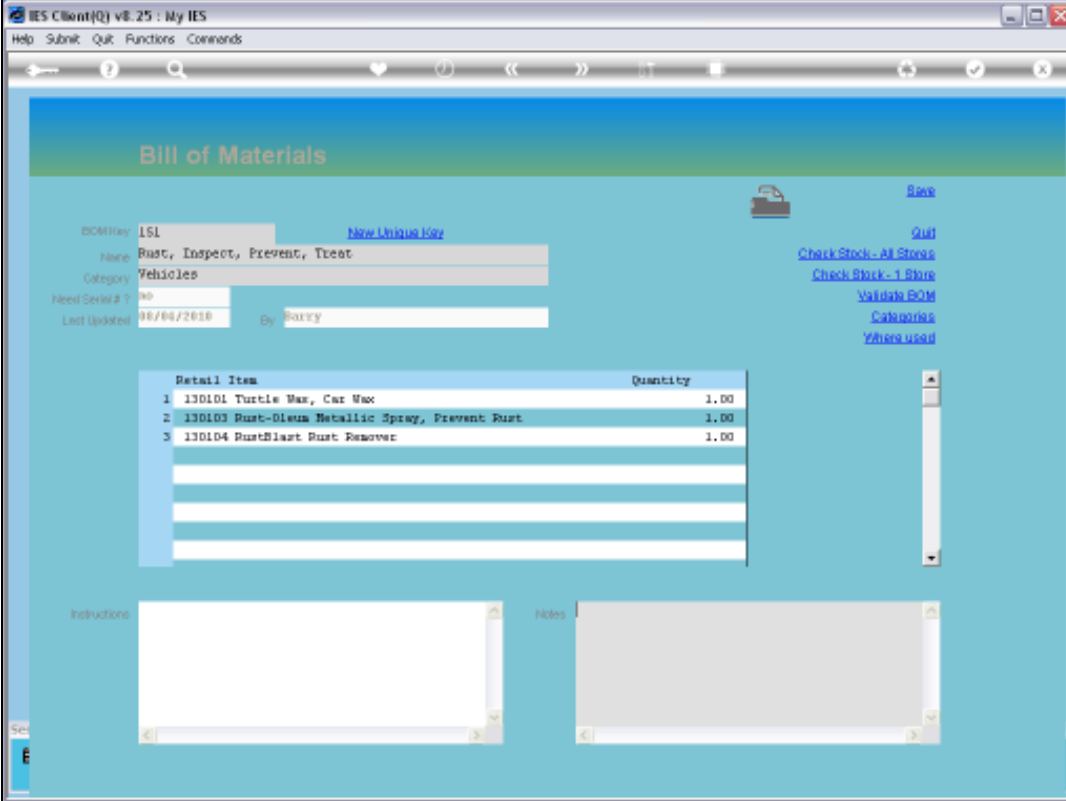
Slide notes: We also have a function to validate a Bill, and this validation ensures that the Bill, which

may also include other Bills, does not re-iteratively use itself somewhere down the line,

because that would result in an impossible Bill that cannot be satisfied.



Slide 47
Slide notes:



IES Client v8.25 : My IES

Help Submit Quit Functions Commands

Bill of Materials

Print, Inspect, Prevent, Treat

Category: Vehicles

Need Serial # ?

Last Updated: 08/04/2010 By: ROLTY

[New Unique Key](#)

[Print](#)

[Quit](#)

[Check Stock - All Stores](#)

[Check Stock - 1 Store](#)

[Validate BOM](#)

[Categories](#)

[Where used](#)

Retail Item	Quantity
1 130101 Turtle Wax, Car Wax	1.00
2 130103 Rust-Dieum Metallic Spray, Prevent Rust	1.00
3 130104 RustStart Rust Remover	1.00

Instructions

Notes

Slide 48

Slide notes: The Bill can also be printed.


```
T1543928522.TXT - Notepad
File Edit Format View Help
BILL OF MATERIALS: printed 08 APR 2010

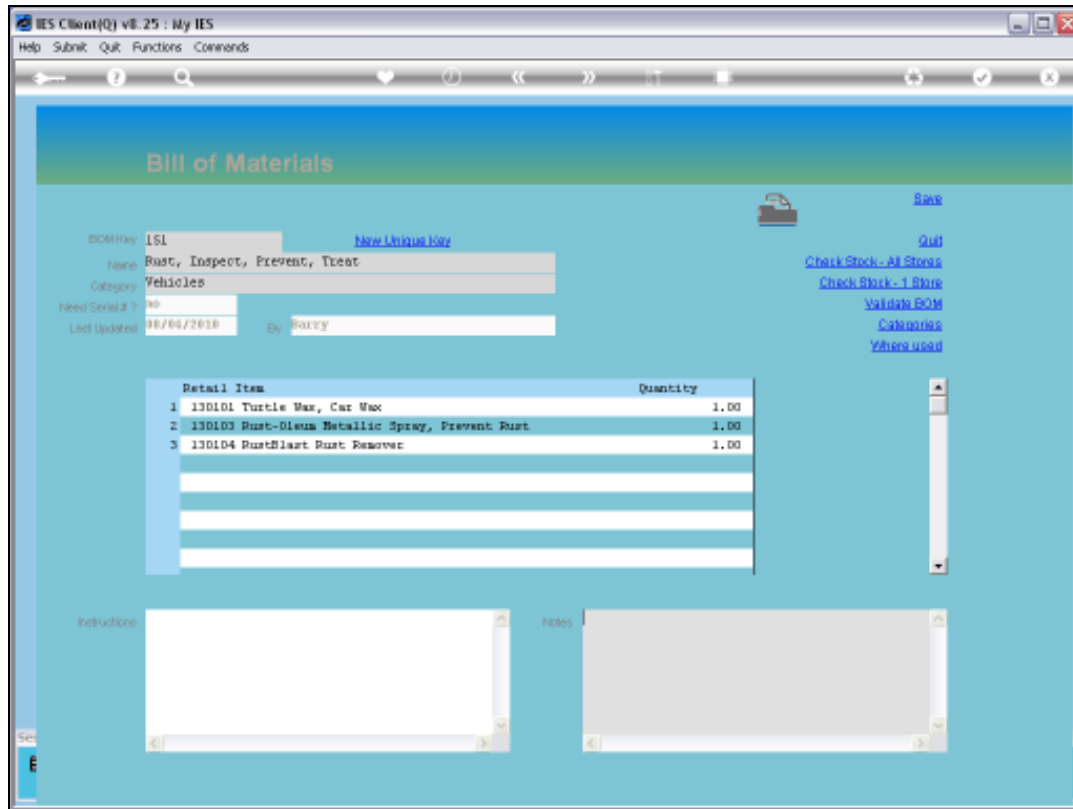
Key: 161
Name: Rust, Inspect, Prevent, Treat
Category: Vehicles

Item Description                                Quantity
130101 Turtle Wax, Car Wax                       1.00
130103 Rust-Oleum Metallic Spray, Prevent Rust   1.00
130104 RustBlast Rust Remover                    1.00

***
```

Slide 49

Slide notes: Here is a sample print.



Slide 50

Slide notes: And of course we can check the current Stock levels to see whether we currently have sufficient Stock to satisfy this Bill if we want to use it.



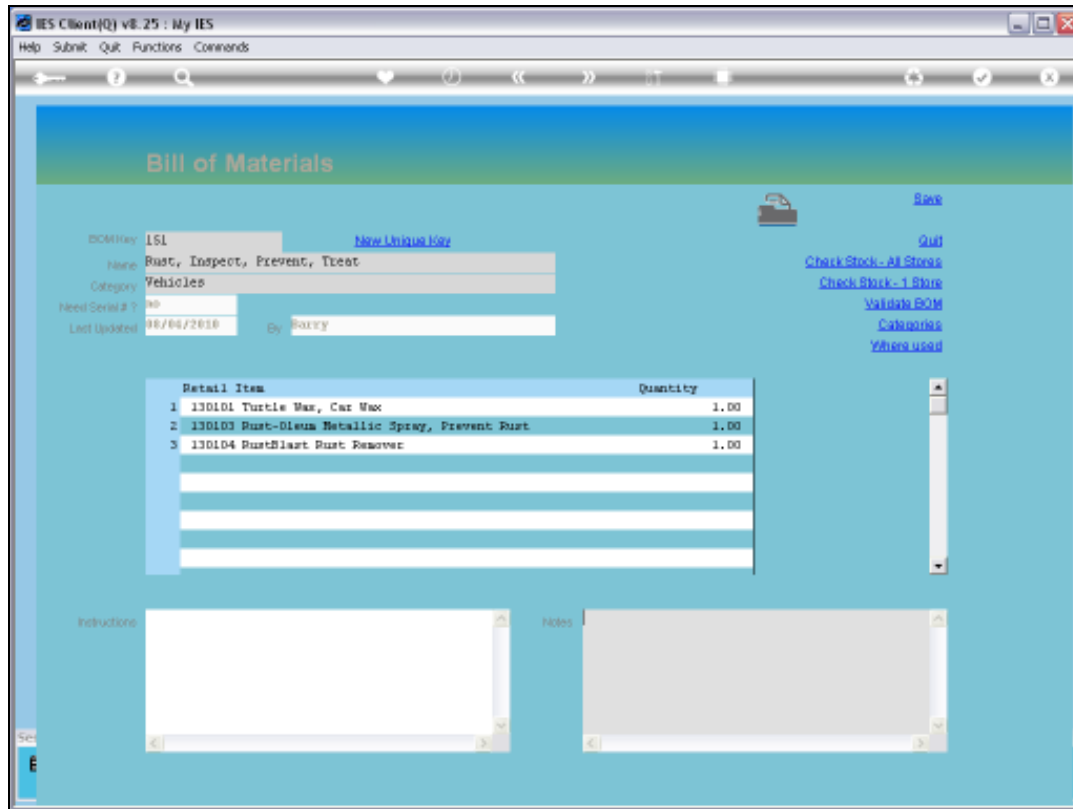
Slide 51

Slide notes: In this case, we are checking all Stores.



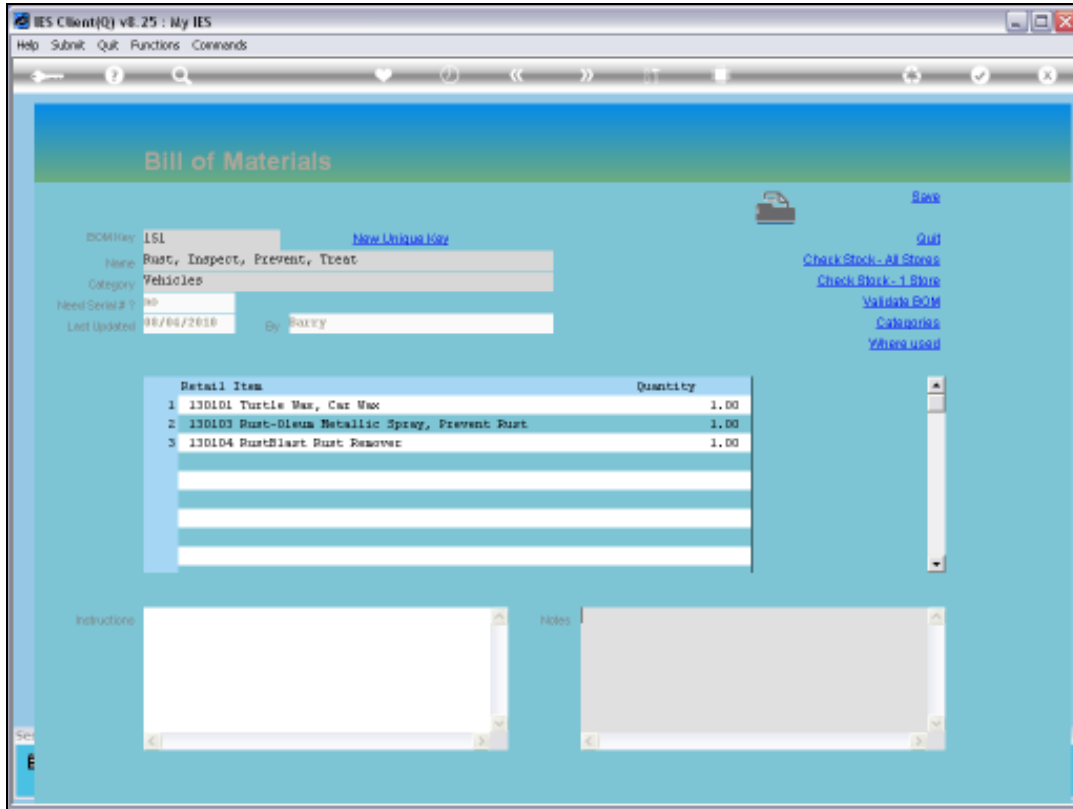
Slide 52

Slide notes:

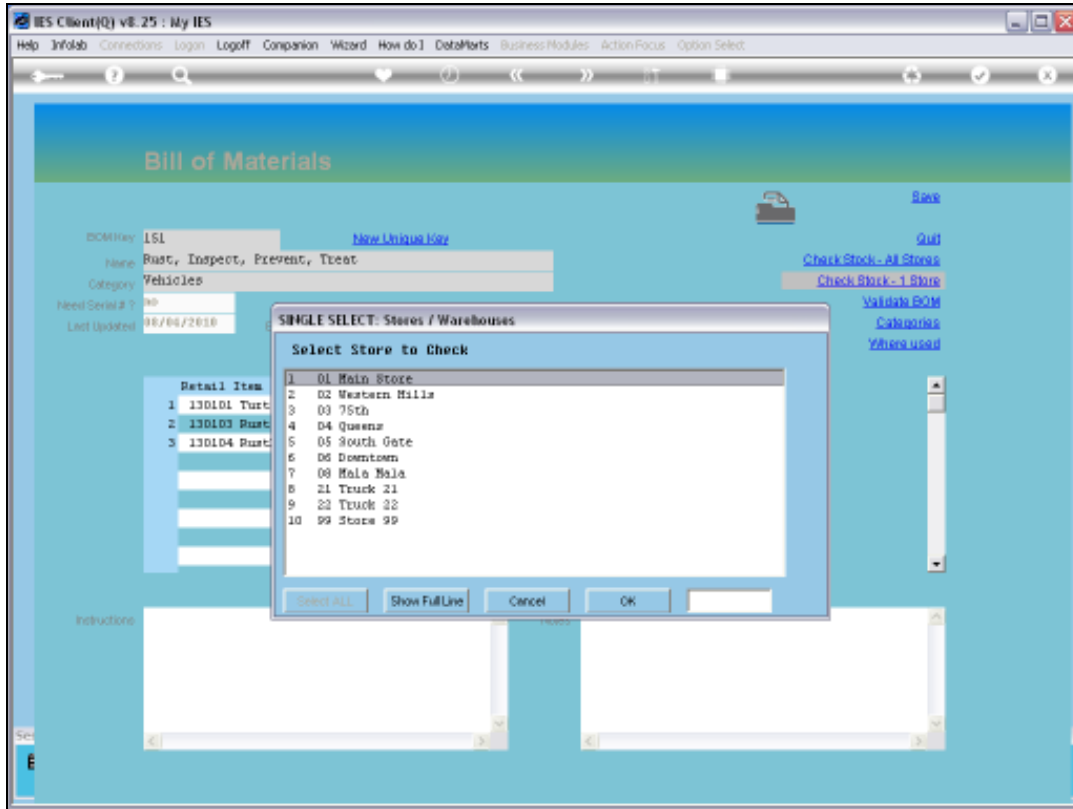


Slide 53

Slide notes: But we can also select a specific Store to check whether the Bill can be satisfied from that Store.

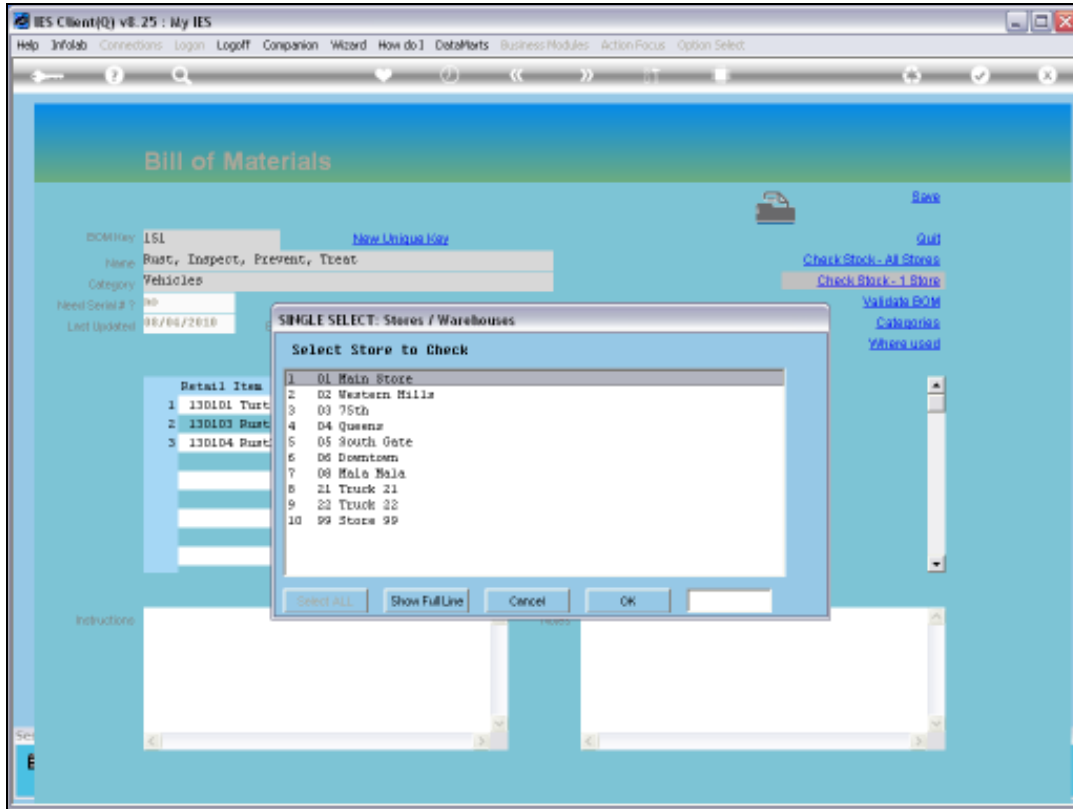


Slide 54
Slide notes:



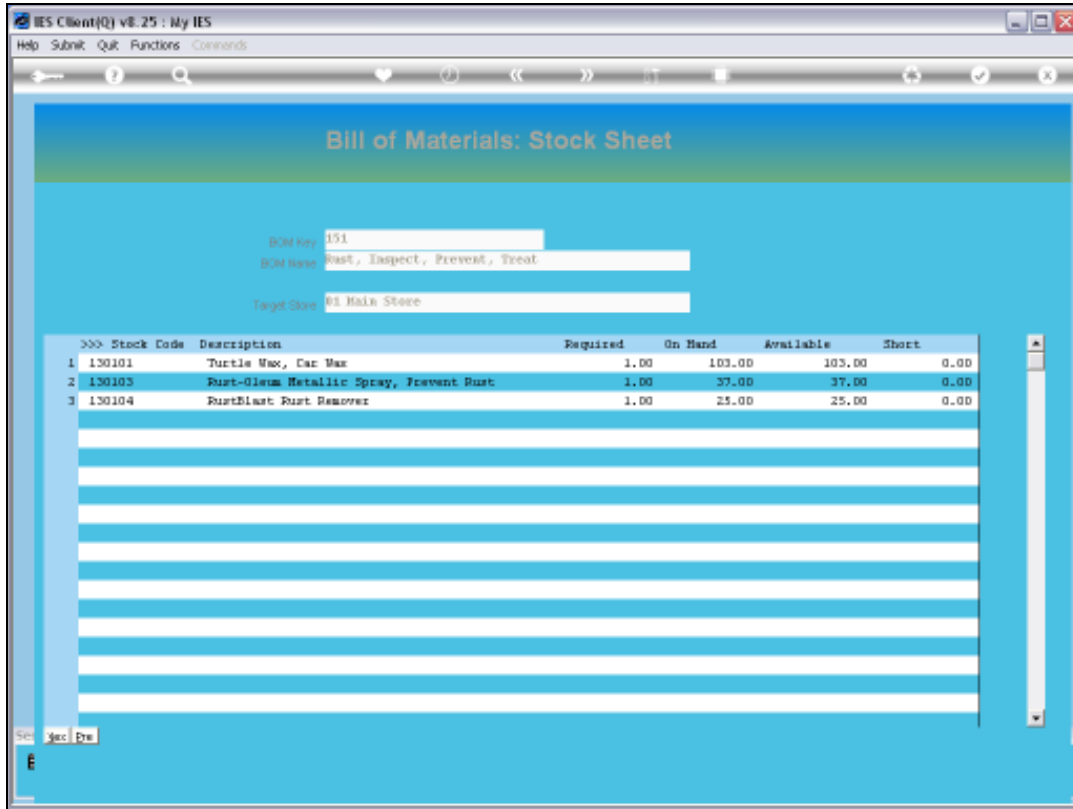
Slide 55

Slide notes:



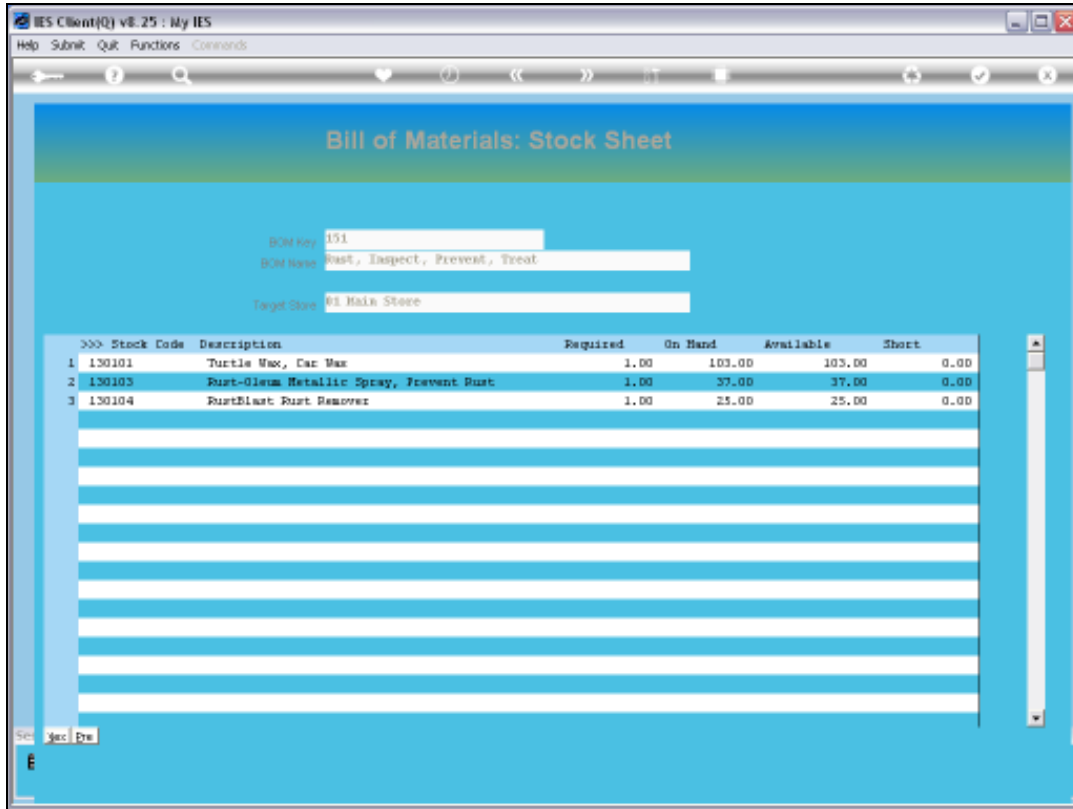
Slide 56

Slide notes:



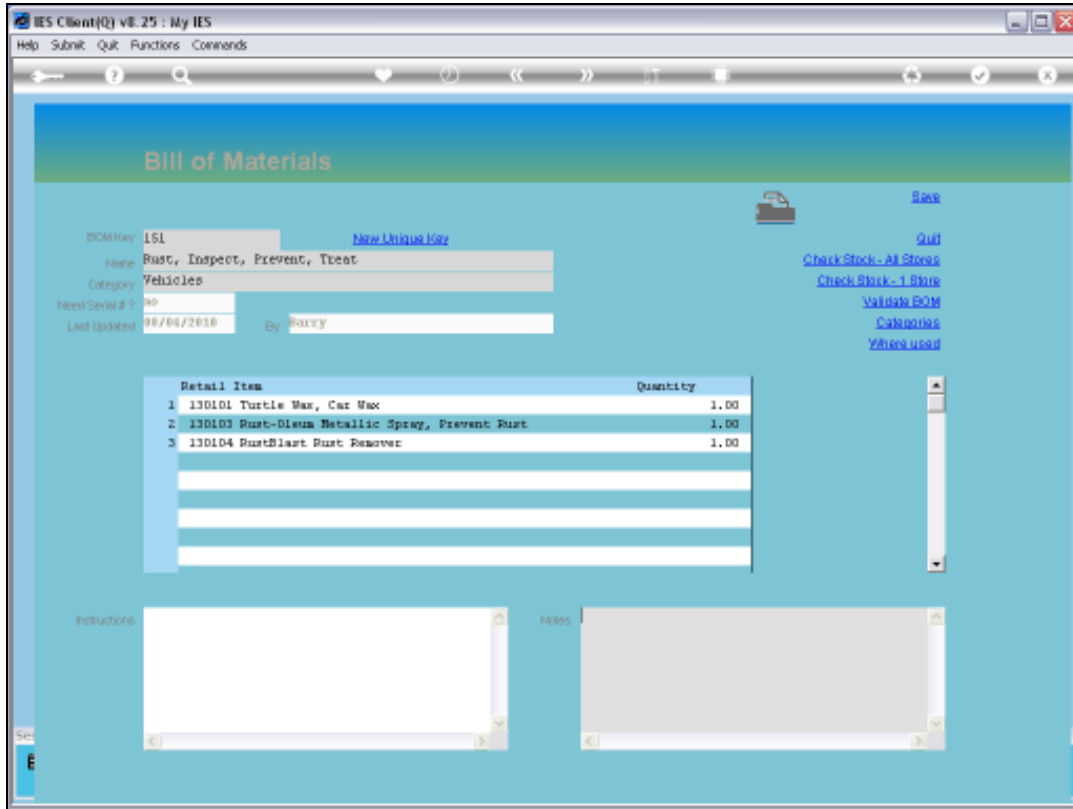
Slide 57

Slide notes: Here we can see the Stock measured against the Bill in the Target Store only.

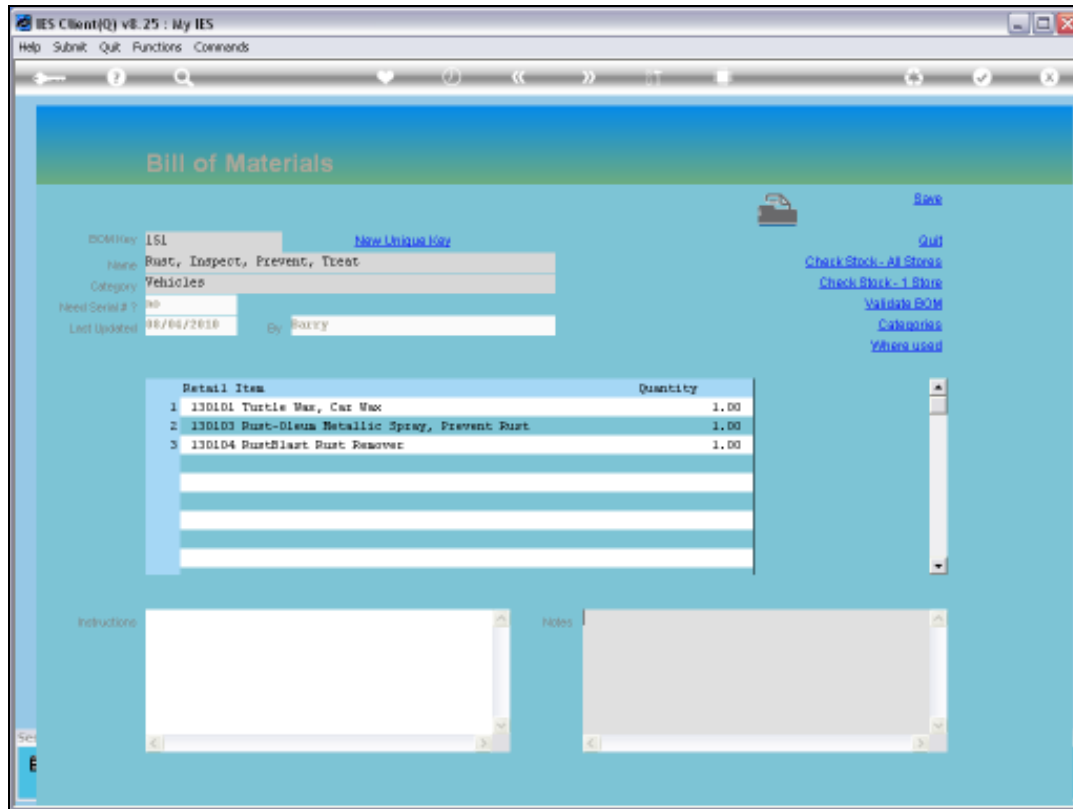


Slide 58

Slide notes:



Slide 59
Slide notes:



Slide 60

Slide notes: The Bill of Materials can usually be drilled and accessed from wherever we use it.