

Slide 1

Slide notes: The Planned Maintenance System requires a 1-time setting up of the Control Parameters.

IES Client(0) v8.25 : My IES

Help Submit Quit Functions Commands

Planned Maintenance Control

Save

Processing of non-Stock Costs: -

- Auto Process Service Costs
- Auto Process Skills Costs

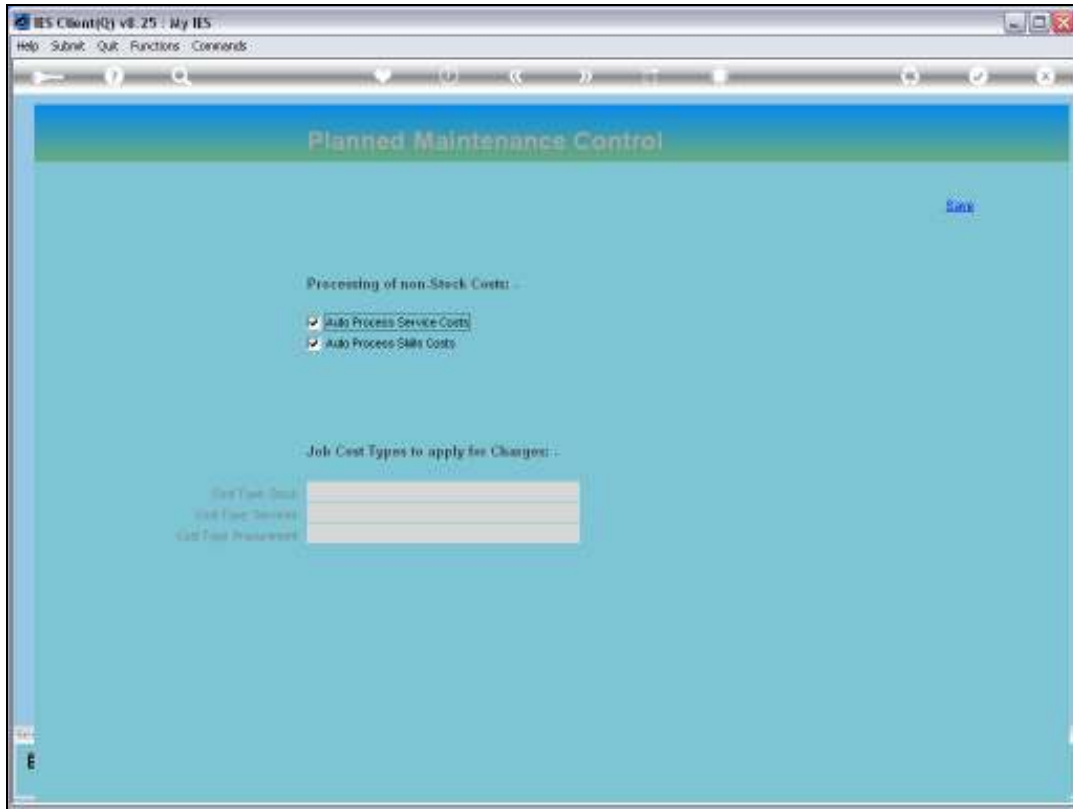
Job Cost Types to apply for Charges: -

Job Type Code	Job Type Description	Cost Type Description

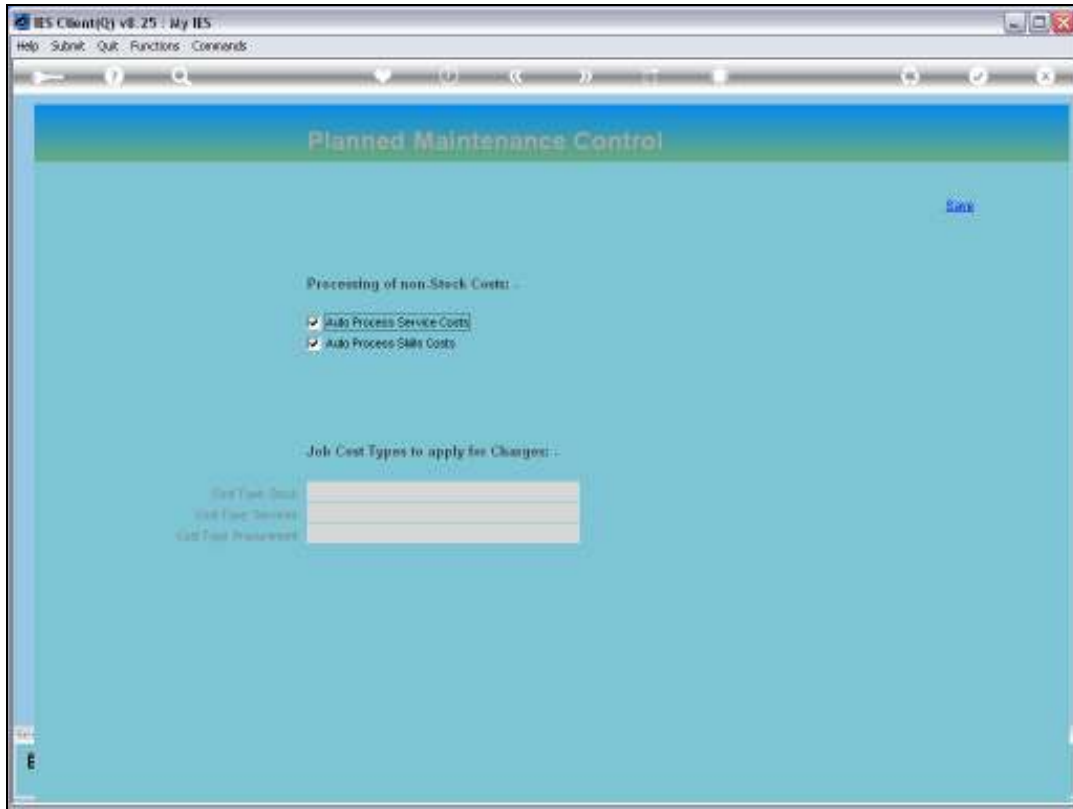
E

Slide 2

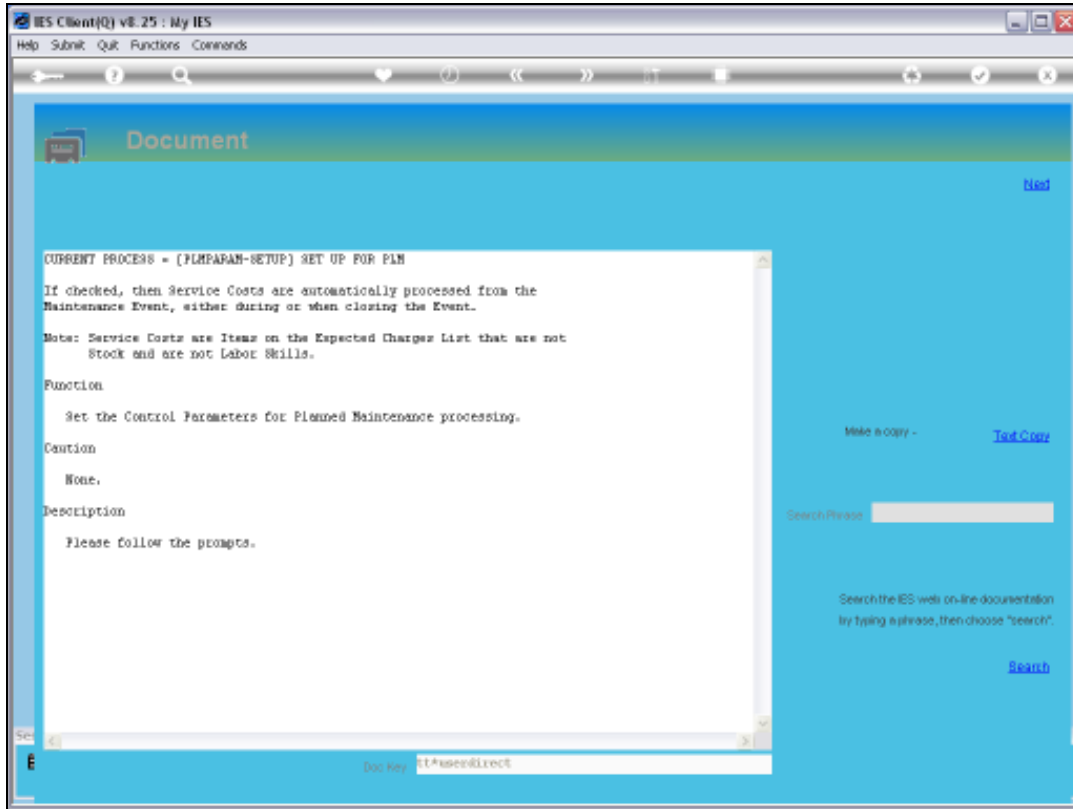
Slide notes: We need to advise the system whether Services Costs should be processed automatically or not.



Slide 3
Slide notes:

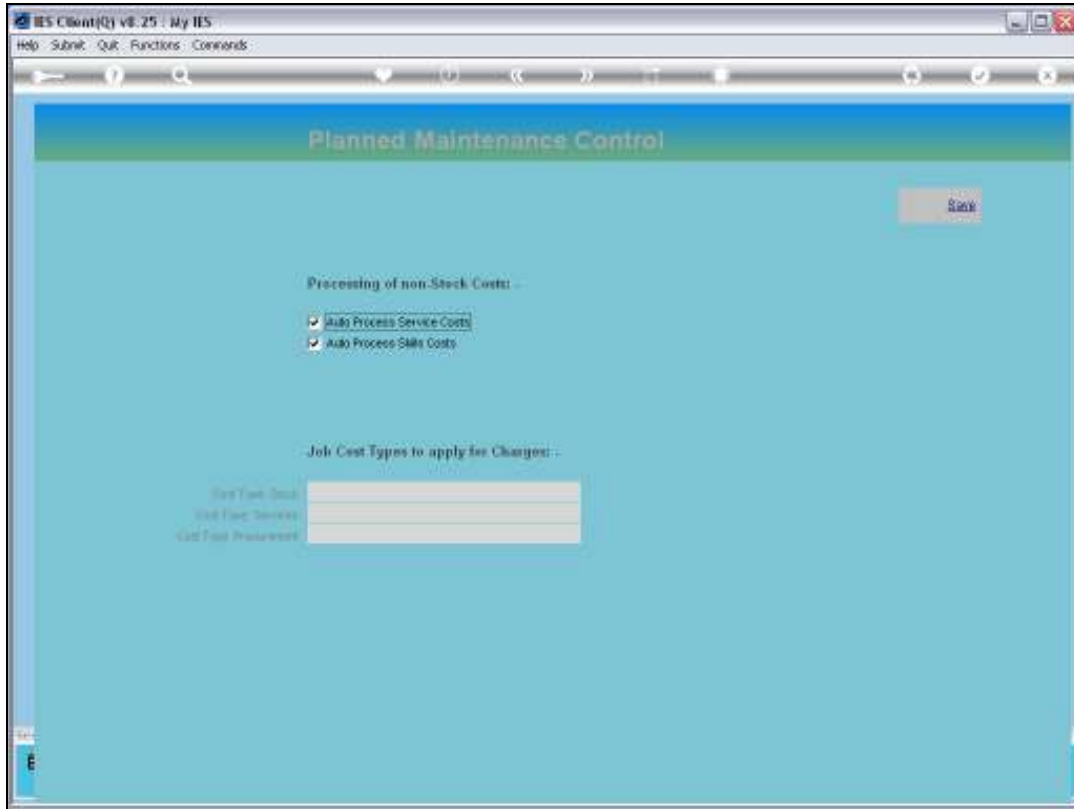


Slide 4
Slide notes:

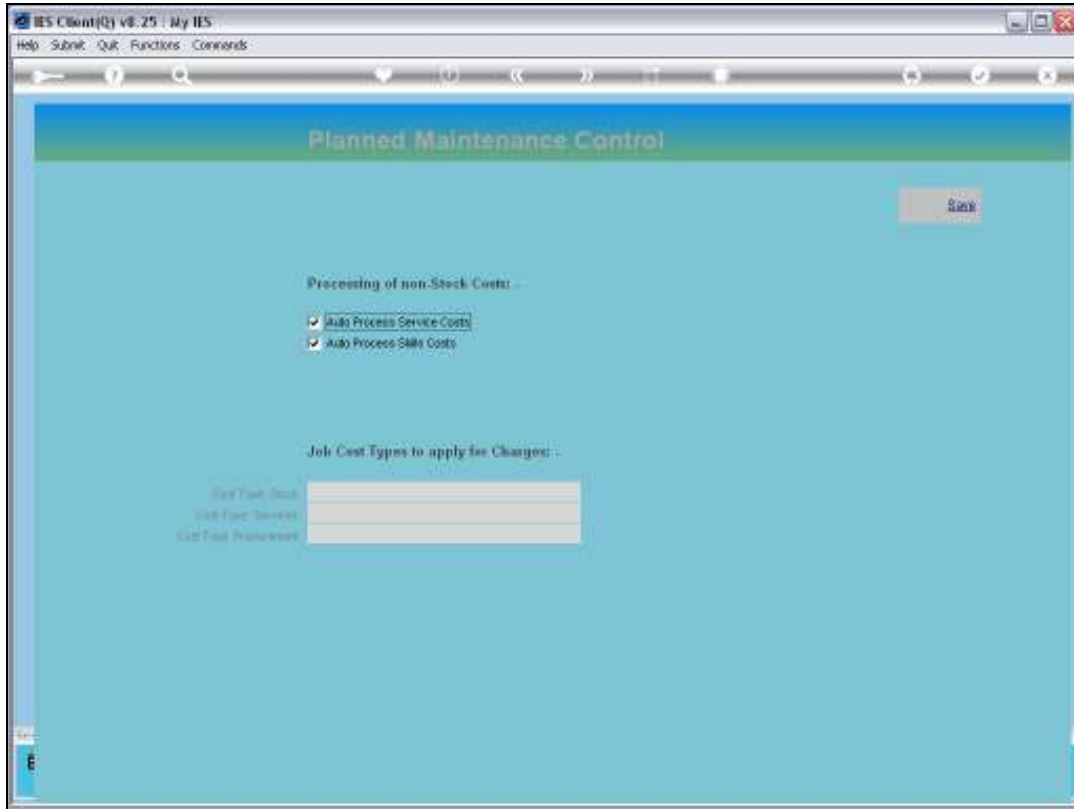


Slide 5

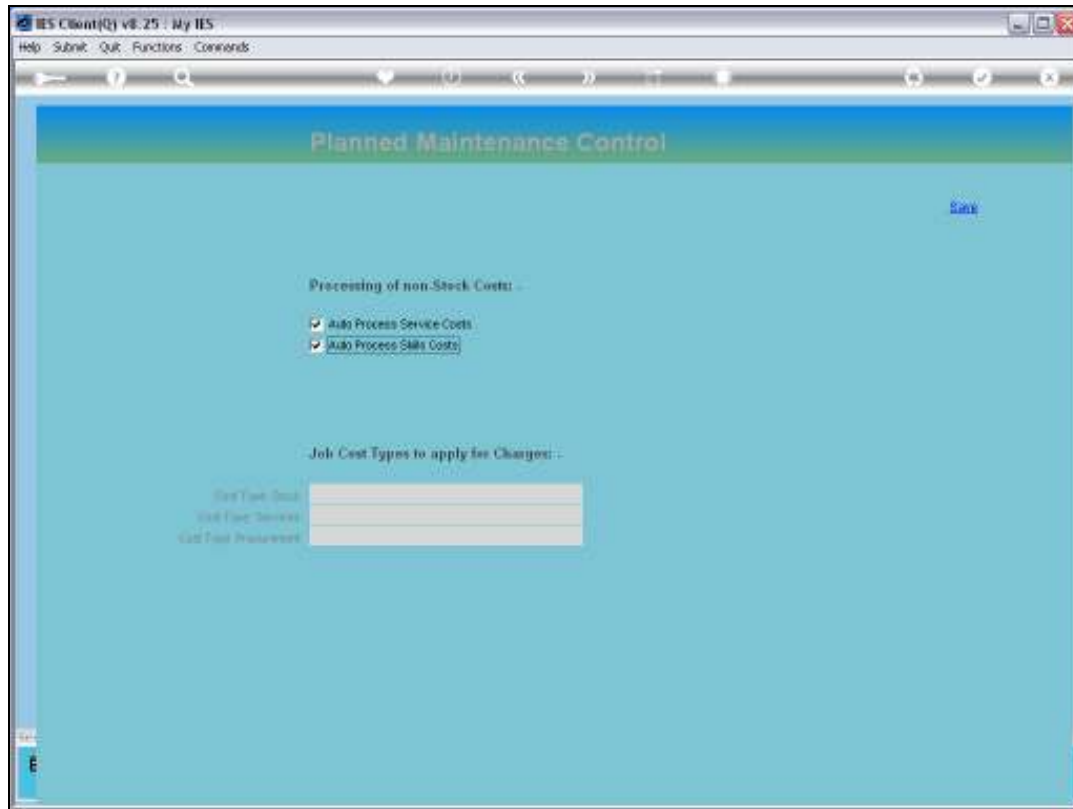
Slide notes: This Item is usually checked for automatic processing, unless you insist on processing Service Costs separately by captured Journal.



Slide 6
Slide notes:

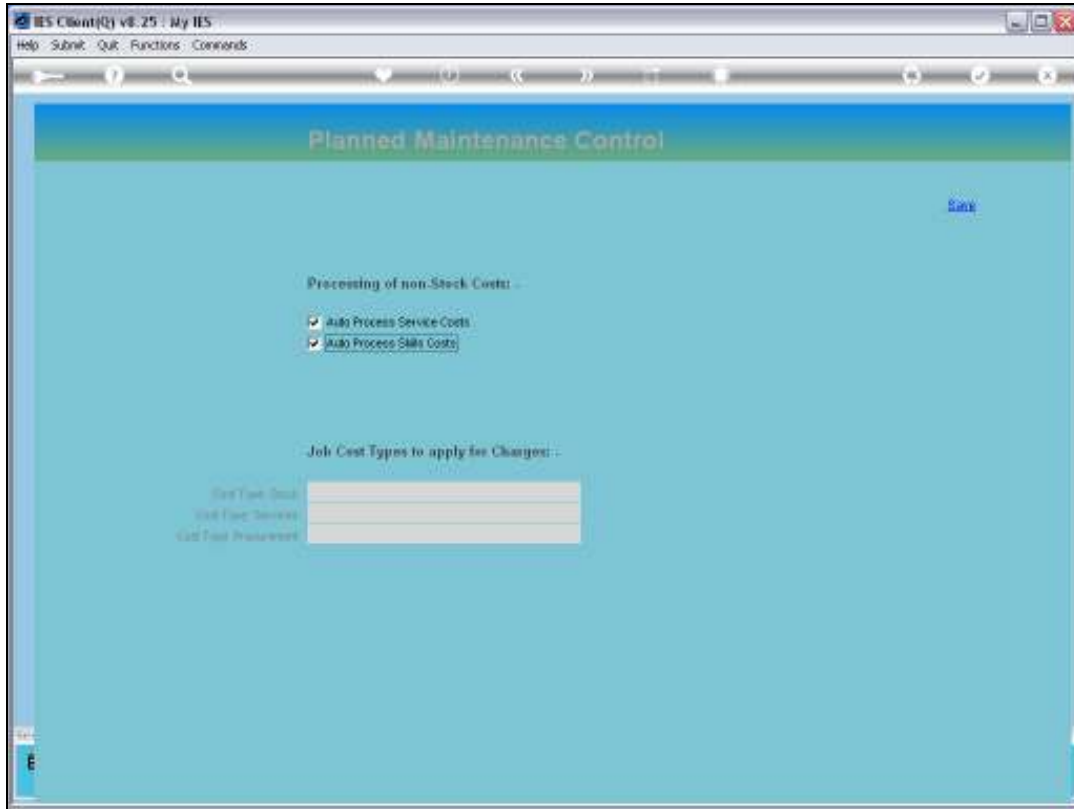


Slide 7
Slide notes:

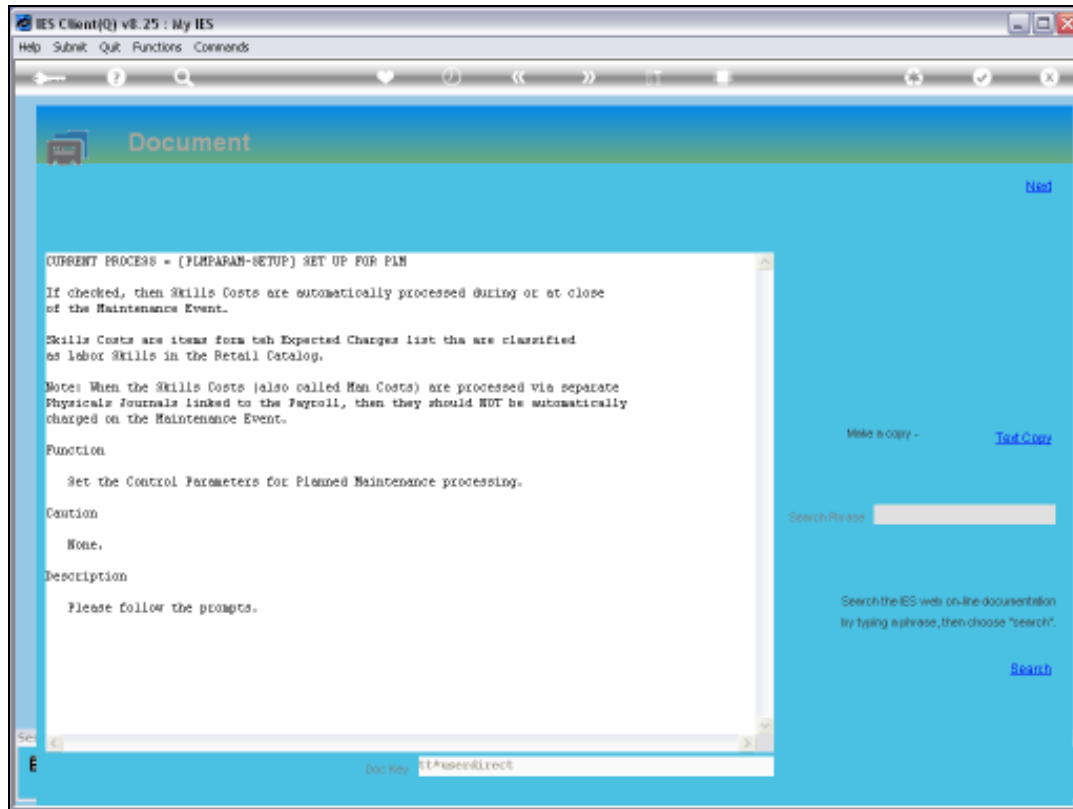


Slide 8

Slide notes: The next parameter is Skills Costs, and whether it should be processed automatically or not.

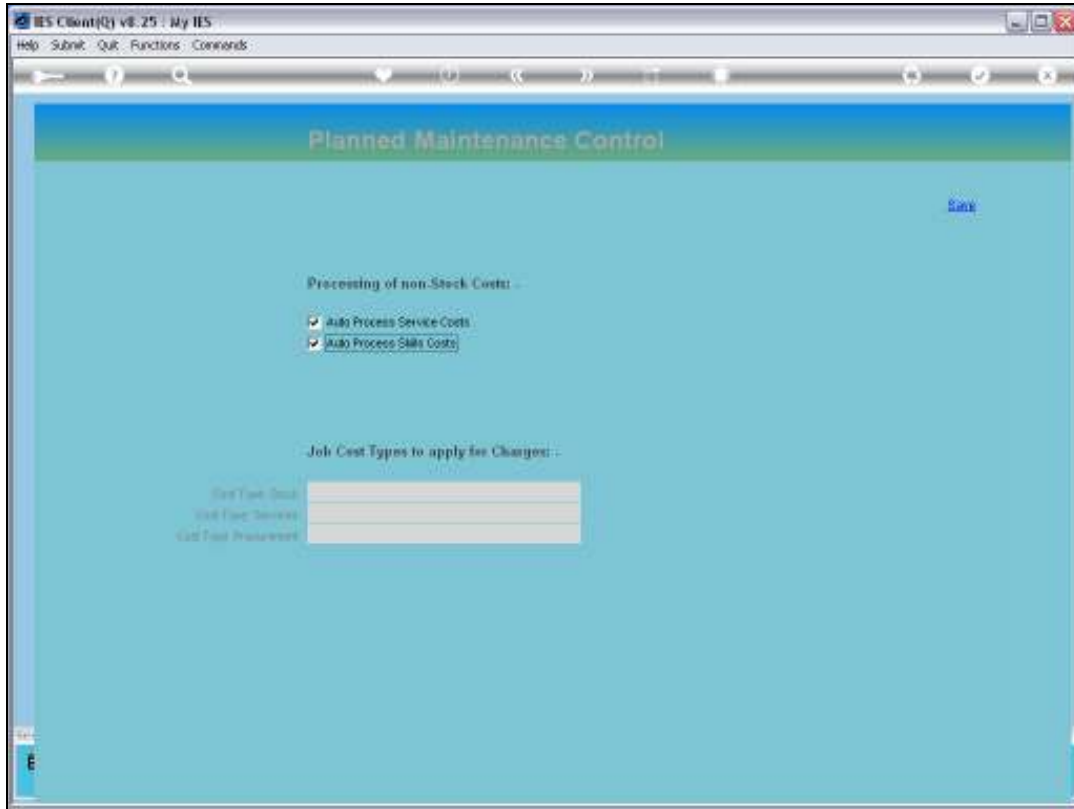


Slide 9
Slide notes:



Slide 10

Slide notes: This one depends very much on the operation of our system. In cases where Man Costs are always captured by the 'Physicals Journals' method for automatic linking to the Payroll, as often used in Agriculture, then we will not check this option. In other cases, it is OK to check the option so that the Man Costs are processed by automatic Journal when the Maintenance Event is complete.



Slide 11

Slide notes:

IES Client(v) v8.25 : My IES

Help Submit Quit Functions Commands

Planned Maintenance Control

Save

Processing of non-Stock Costs: -

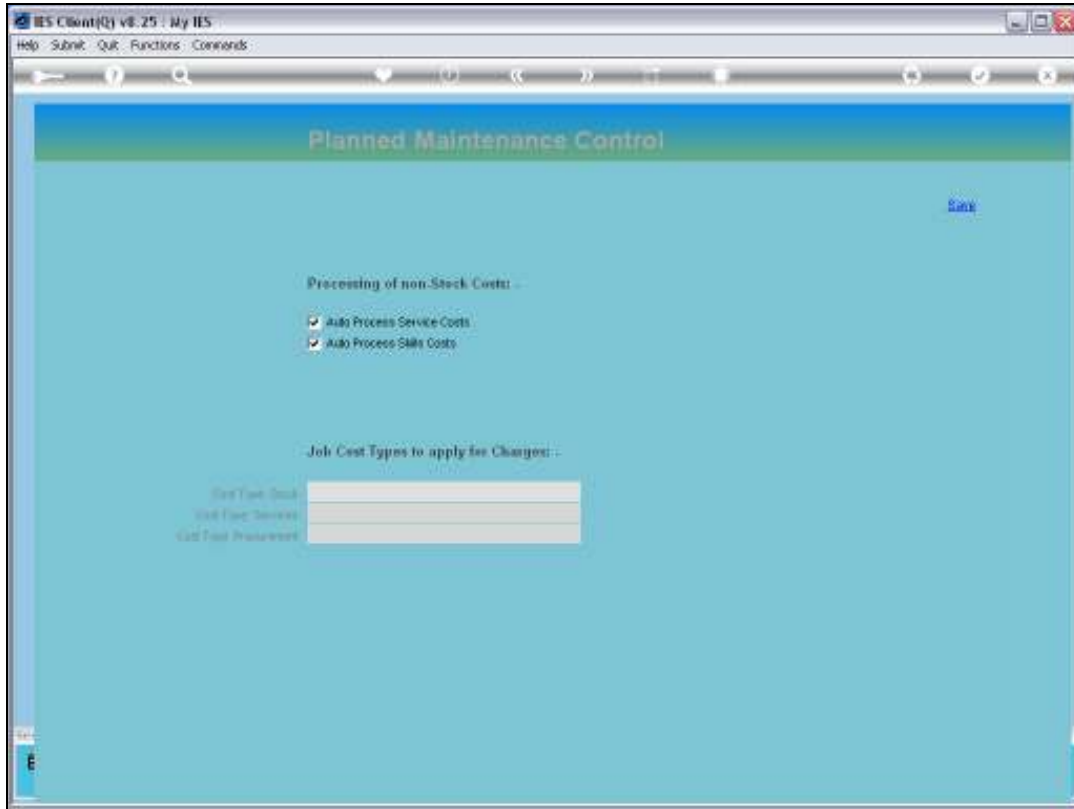
- Auto Process Service Costs
- Auto Process Skills Costs

Job Cost Types to apply for Charges: -

Job Task Code	Job Cost Type	Job Cost Description

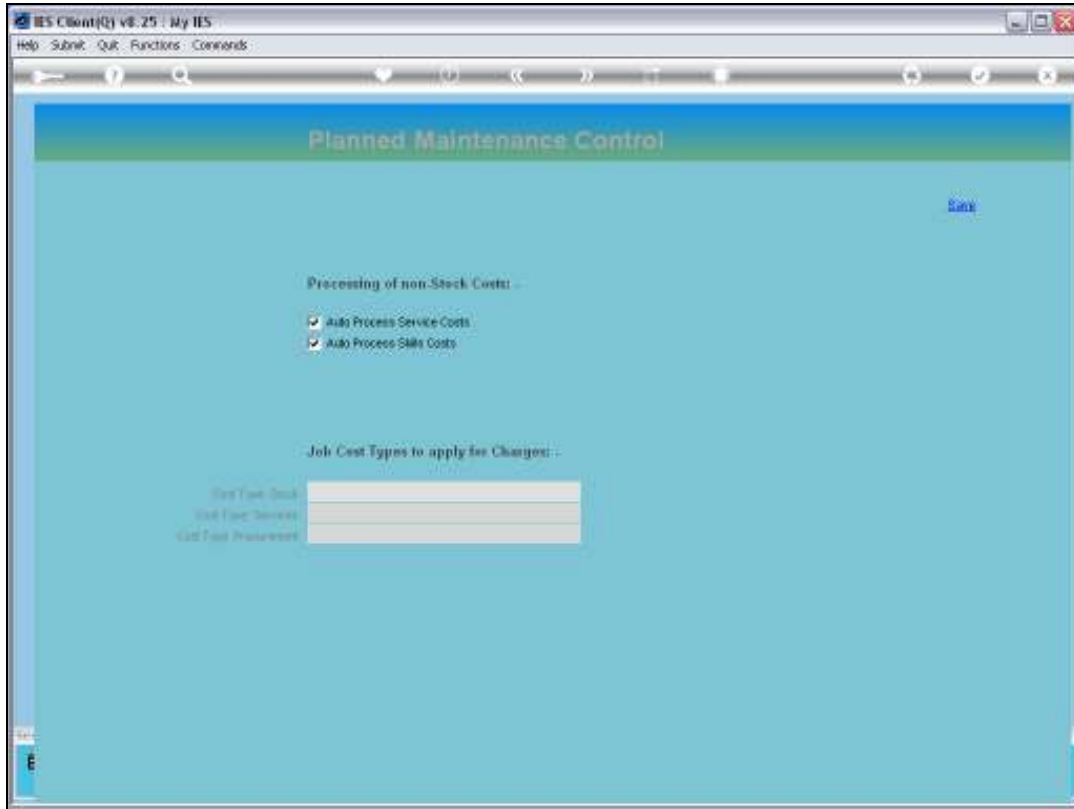
Slide 12

Slide notes: There are 3 primary Categories of Charges for which we need to indicate the standard Job Cost Type to use. The Maintenance Items are all Jobs and charges to Jobs cannot be processed without a Cost Type. These Cost Types may be the same ones that we use for non-maintenance charges, but it is recommended that they are different, i.e. specifically created for Planned Maintenance, so that the charges can easily stand out and be separated from other charges on the Job Accounts.



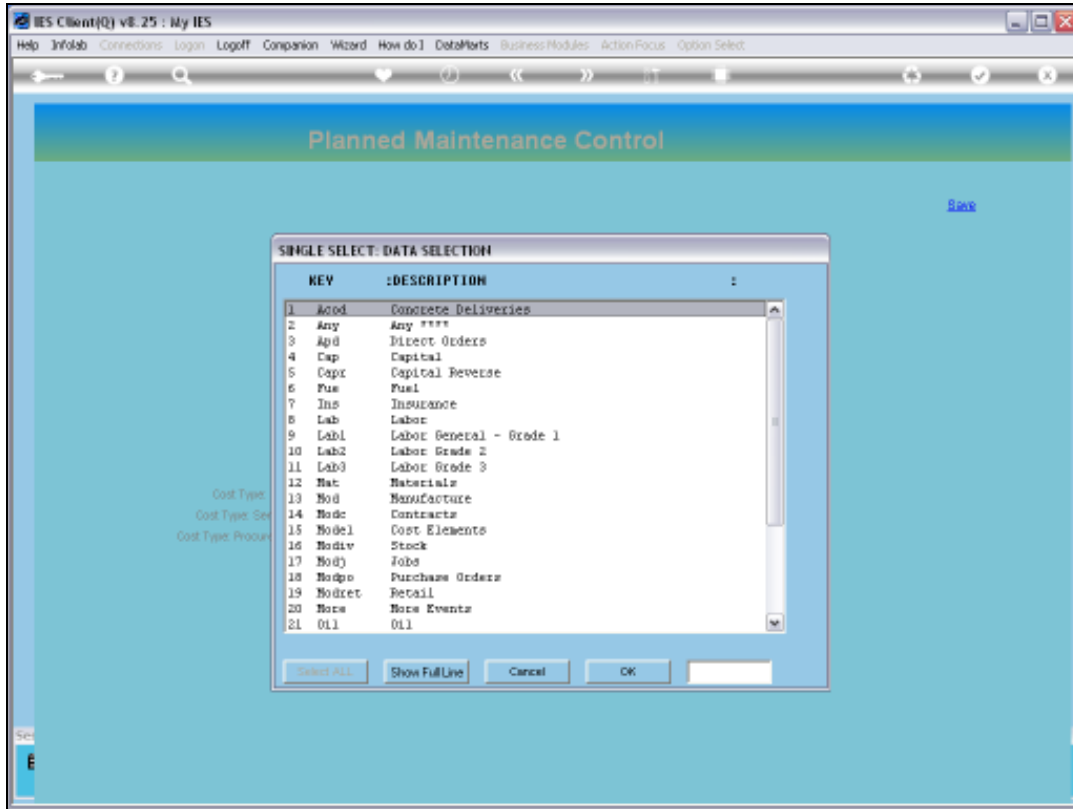
Slide 13

Slide notes:



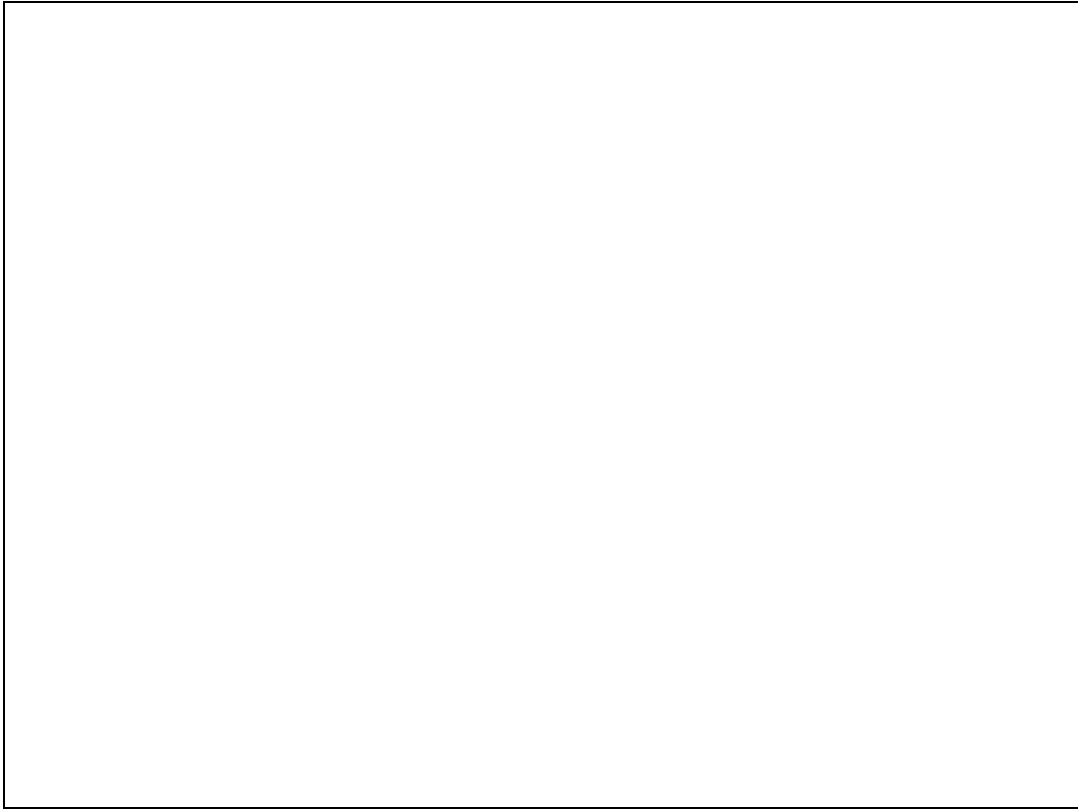
Slide 14

Slide notes:



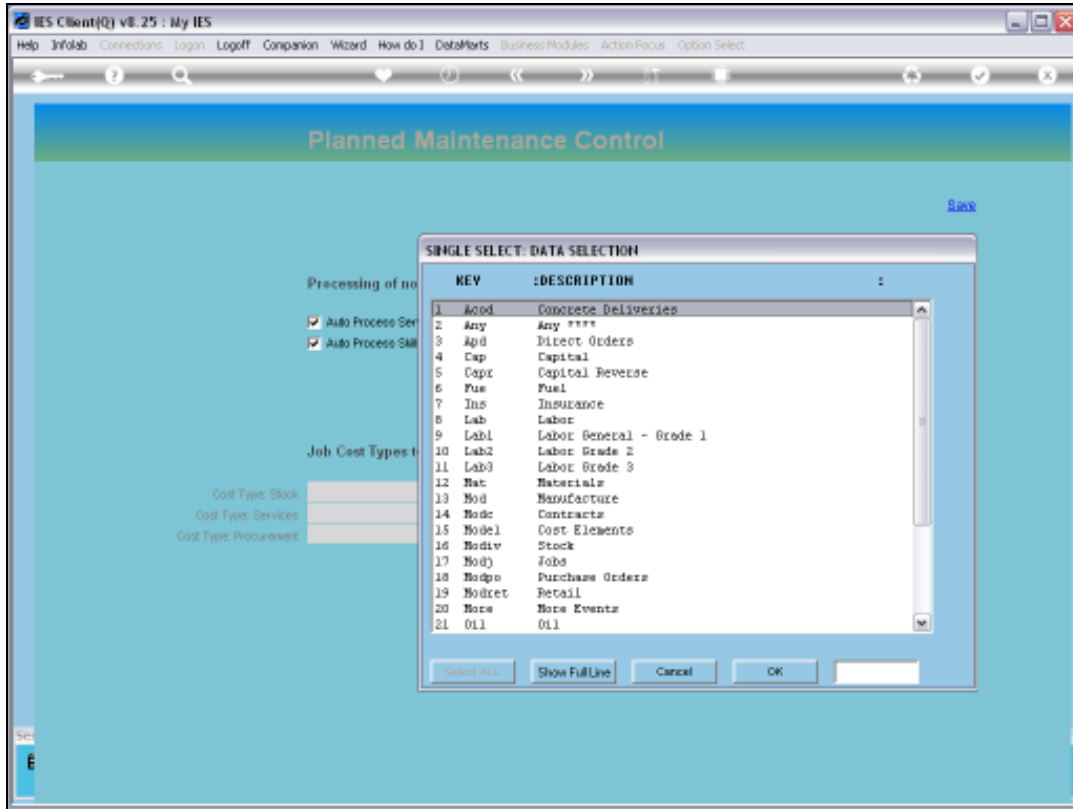
Slide 15

Slide notes:

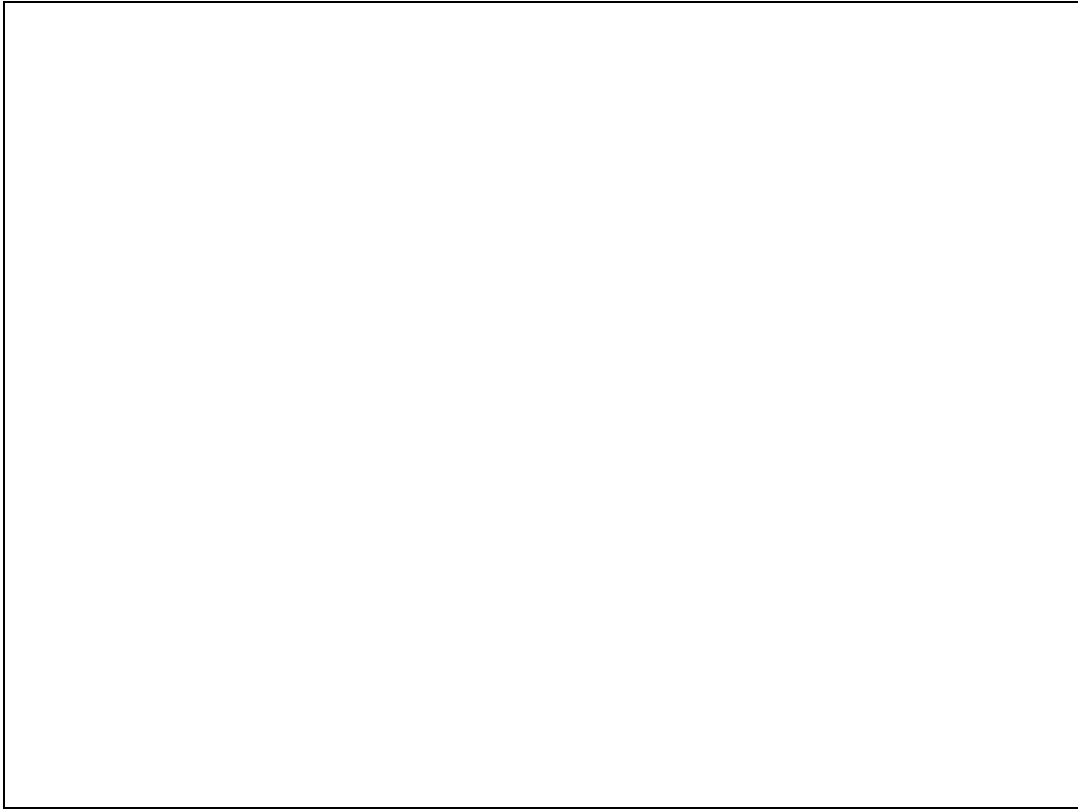


Slide 16

Slide notes:

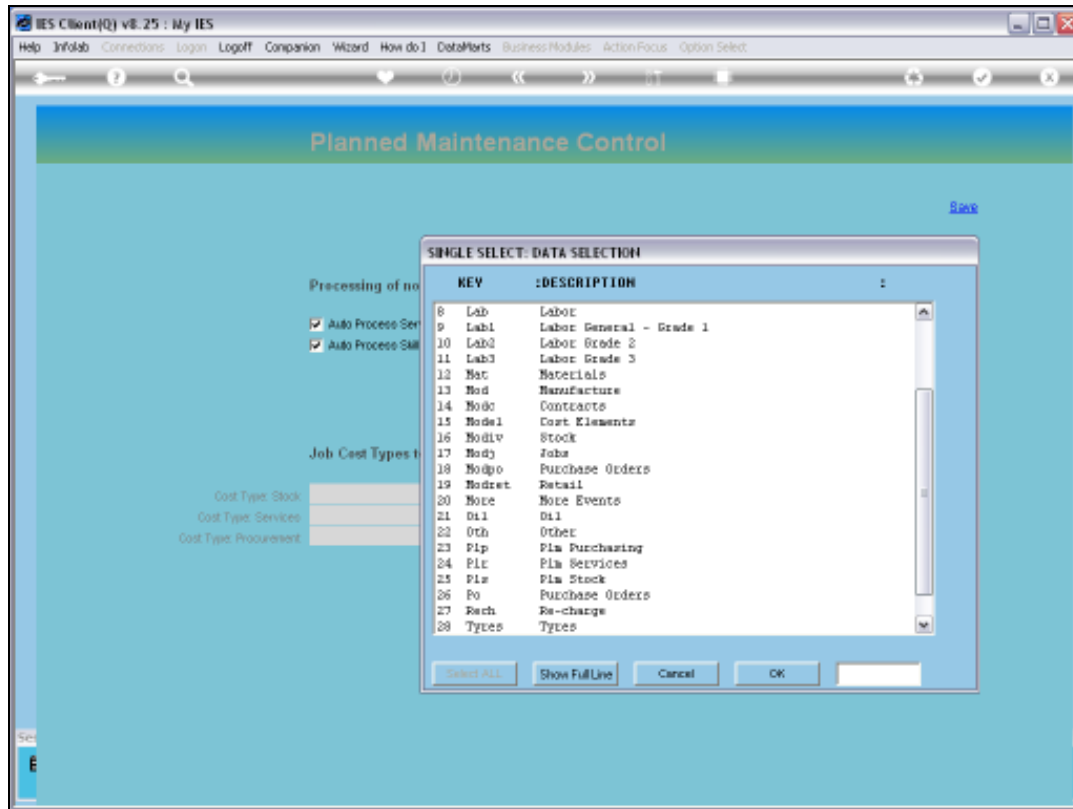


Slide 17
Slide notes:



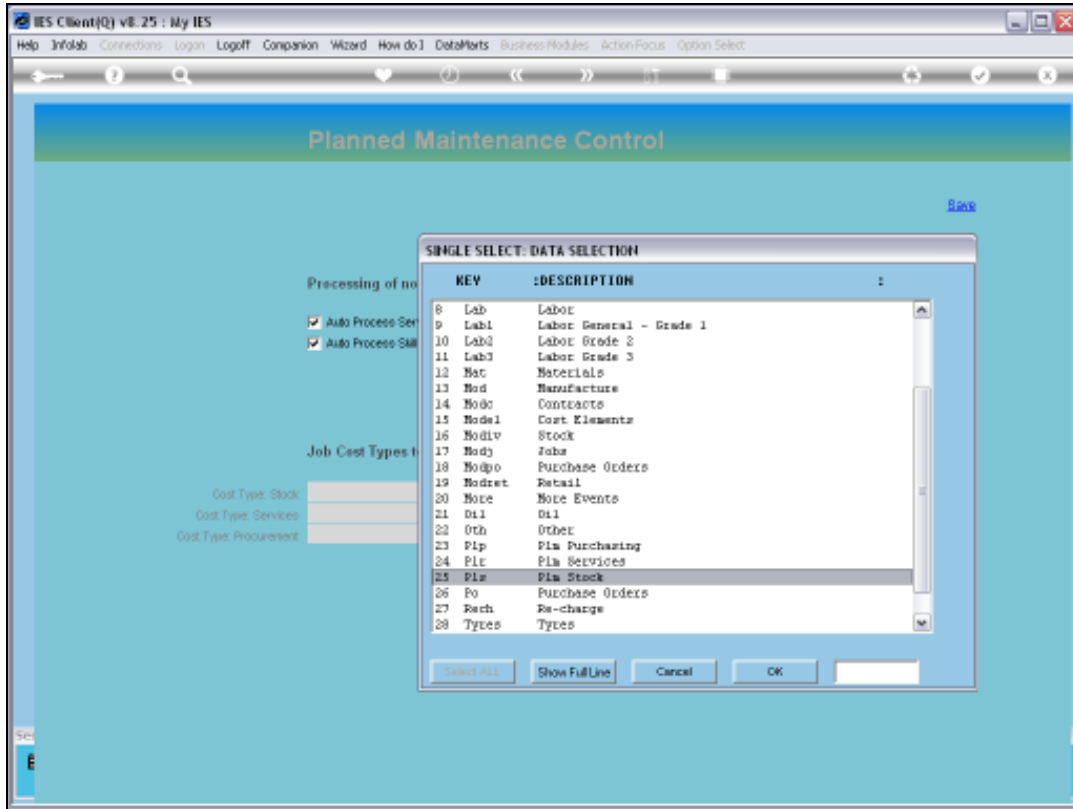
Slide 18

Slide notes:

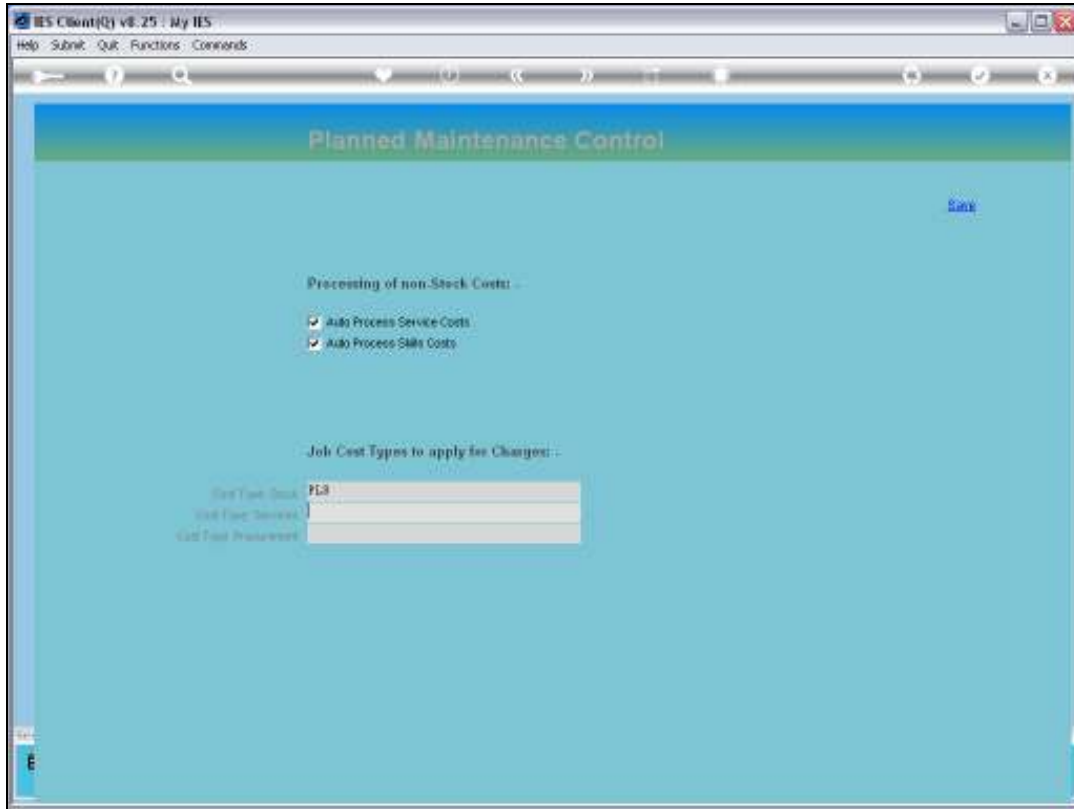


Slide 19

Slide notes: In this example, we already have 3 special Cost Types set up to use with Planned Maintenance, and we can select them from this list. We note that Job Cost Types are set up in the Job Costing module.

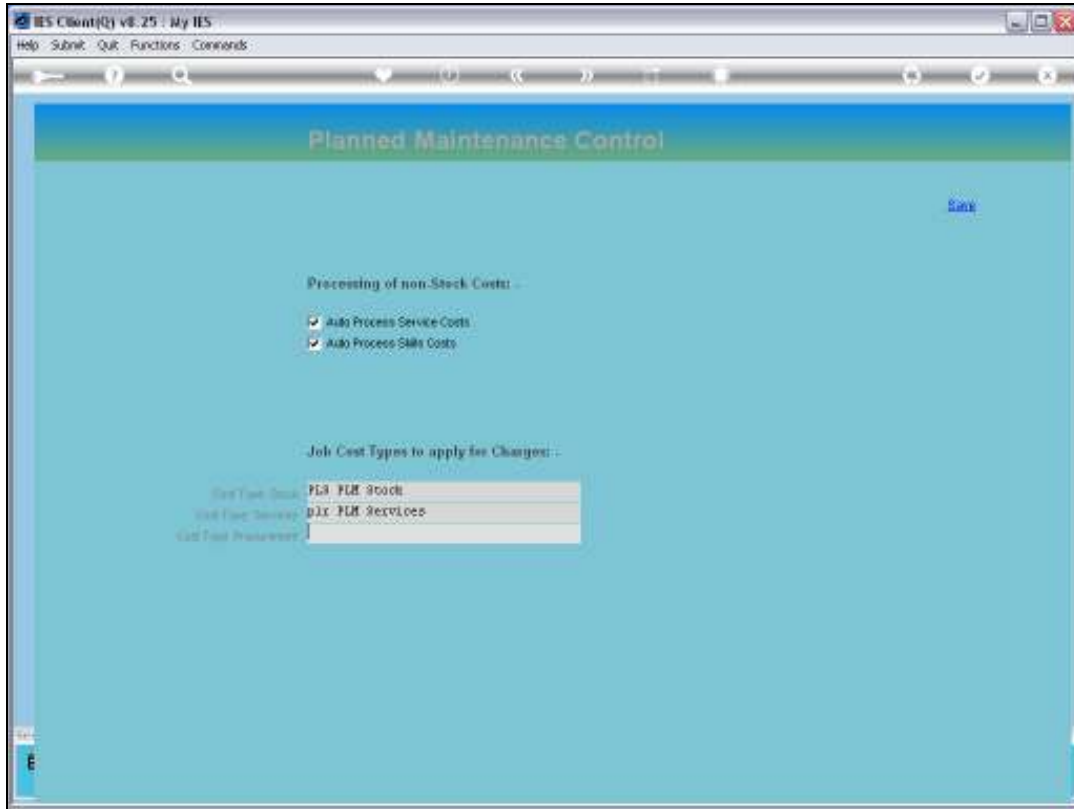


Slide 20
Slide notes:



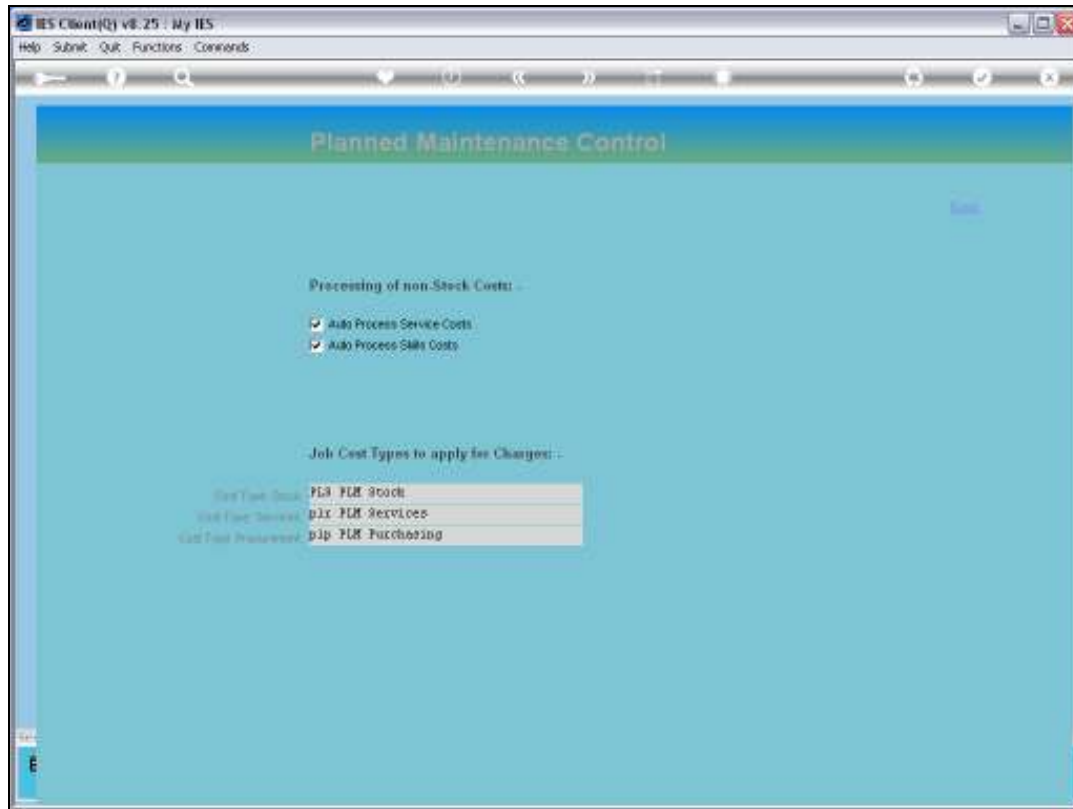
Slide 21

Slide notes:



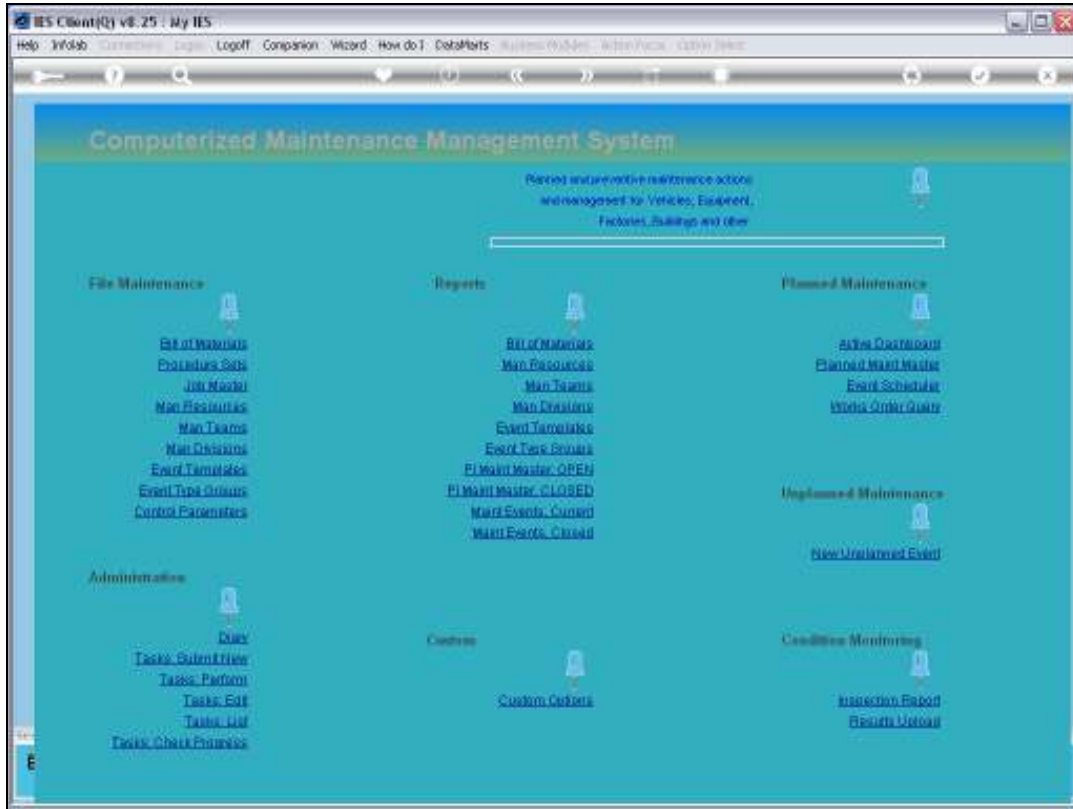
Slide 22

Slide notes:



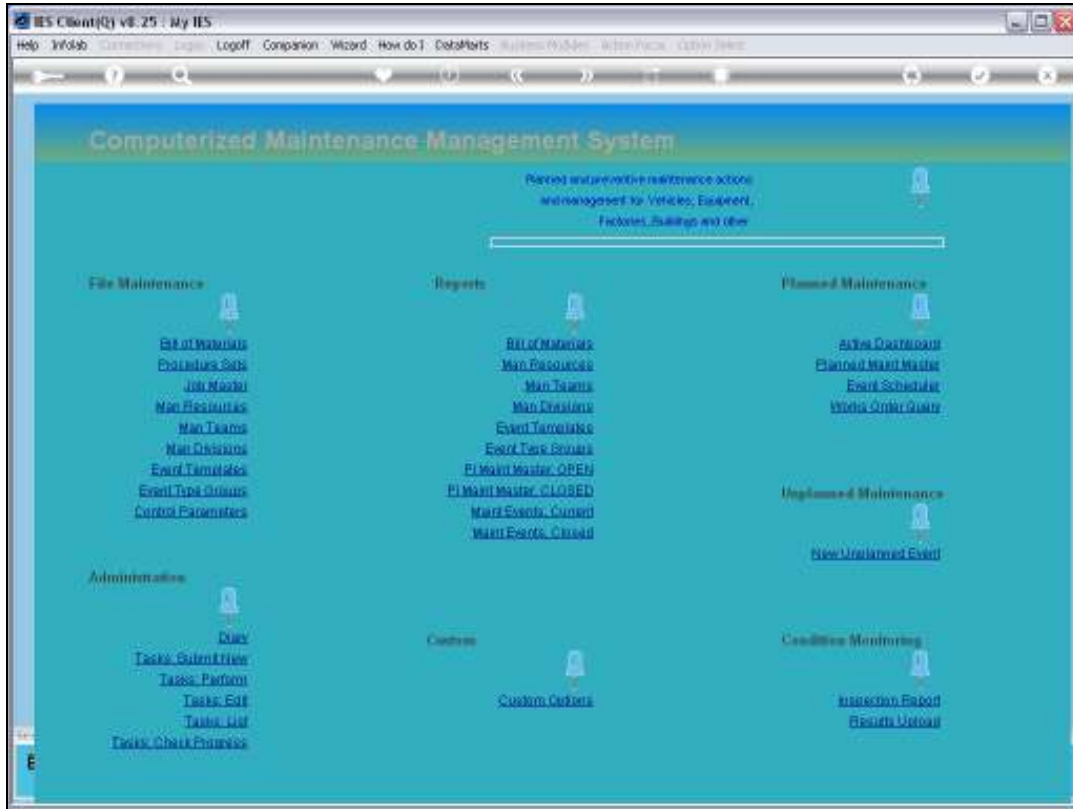
Slide 23

Slide notes: In our example, we use "PLM" to indicate Planned Maintenance and to distinguish it from the other Cost Types used in the Job Costing system.



Slide 24

Slide notes:



Slide 25
Slide notes: