

Maintenance Event Dashboard

Sort By: [Work Order](#) | [Start Date](#)

Actions: [Select Start Dates](#) | [Remove Start Dates](#) | [Remove HR](#)

HR Alerts Reports: [By Work Center](#) | [By Person](#)

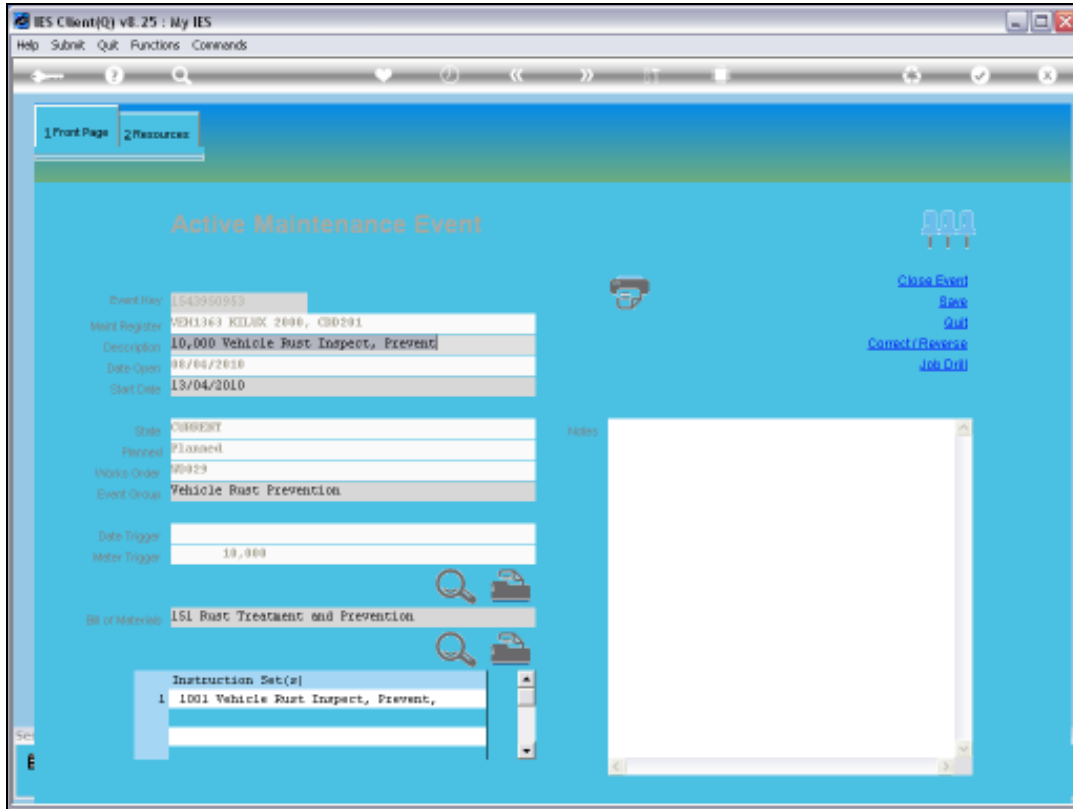
Follow Up: [New Task](#) | [Diary](#)

Active Maintenance Events: [Add](#)

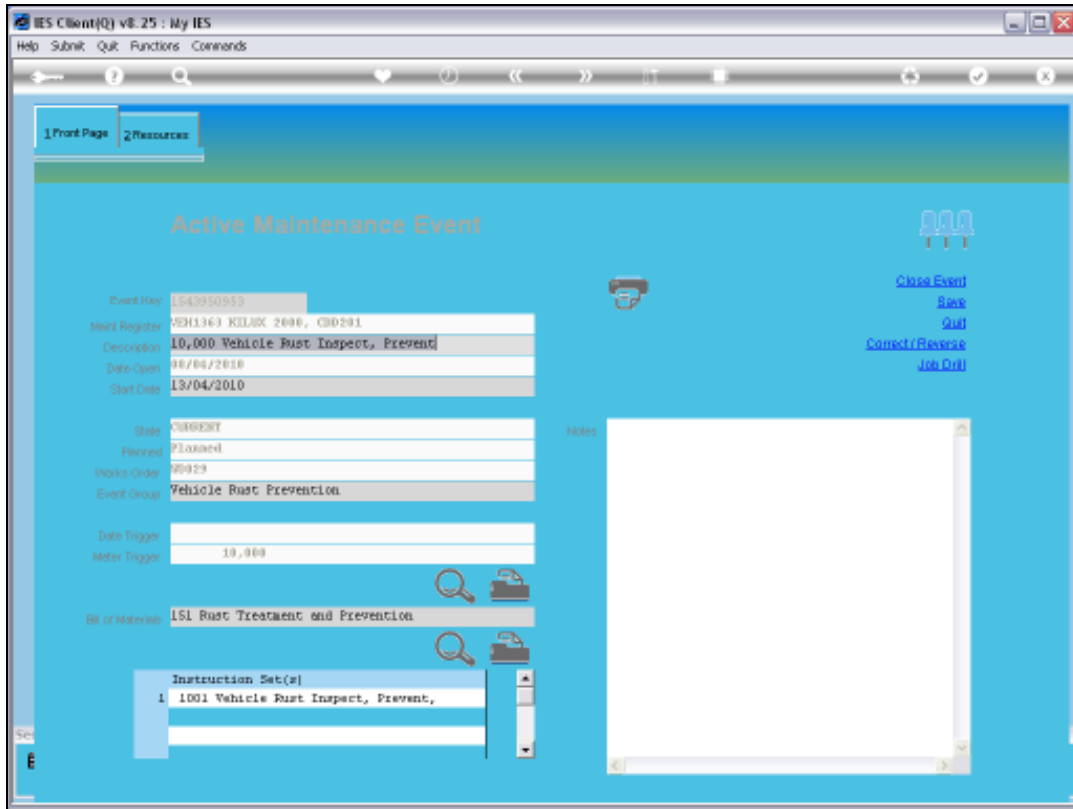
>>> Work Order	Status	Information	Maintenance Event	Job		
1	W0015	Start ??	STOCK GK HP00 P000	40,000 Service Kilux	VEH1351 KILUX 2000, K0K301	
2	W0016	Start ??	STOCK GK HP00 P000	180,000 Service Kilux	VEH1352 KILUX 2000, JHG152	
3	W0017	13/04/10	STOCK GK HP00 P000	50,000 Service Kilux	VEH1353 KILUX 2000, K0K309	
4	W0018	Start ??	STOCK GK HP00 P000	120,000 Service Kilux	VEH1356 KILUX 2000, K0K363	
5	W0020	Start ??	STOCK GK HP00 P000	20,000 Service, Cherry 1400	VEH1903 CHERRY 1400, D60333	
6	W0021	Start ??	STOCK GK HP00 P000	20,000 Vehicle Rust Inspect,	VEH1903 CHERRY 1400, D60333	
7	W0022	13/04/10	STOCK GK HP00 P000	10,000 Vehicle Rust Inspect,	VEH1901 HANDA 1600, AAE367	
8	W0023	Start ??	STOCK GK HP00 P000	10,000 ka Service, Honda 160	VEH1901 HANDA 1600, AAE367	
9	W0024	Start ??	STOCK GK HP00 P000	180,000 Vehicle Rust Inspect	veh1352 KILUX 2000, JHG152	
10	W0025	13/04/10	STOCK GK HP00 P000	Inspect, Lubricate	Eqc002 Conveyor Chain	
11	W0026	Start ??	STOCK GK HP00 P000	Grease	Eqc002 Conveyor Chain	
12	W0027	13/04/10	STOCK GK HP00 P000	Chain Adjust	Eqc002 Conveyor Chain	
13	W0028	Start ??	STOCK GK HP00 P000	10,000 Service Kilux	VEH1363 KILUX 2000, CDD201	
14	W0029	13/04/10	STOCK ??	HP01 P000	10,000 Vehicle Rust Inspect,	VEH1363 KILUX 2000, CDD201
15	W0030	Start ??	STOCK GK HP00 P000	100,000 Service Kilux	veh1367 KILUX 2000, ASD988	
16	W0031	Start ??	STOCK GK HP00 P000	70,000 Vehicle Rust Inspect,	veh1368 KILUX 2000, ASD544	
17	W0032	Start ??	STOCK GK HP00 P000	Grease	Eqc003 Transmission Chain # 3	
18	W0033	Start ??	STOCK GK HP00 P000	Inspect, Lubricate	Eqc003 Transmission Chain # 3	
19	W0034	Start ??	STOCK GK HP00 P000	Service Oil Burners	Eqc001 FACTORY BOILER no 1	
20	W0036	Start ??	STOCK GK HP00 P000	50,000 Vehicle Rust Inspect,	veh1904 HANDA 1600, H2H444	
21	W0037	Start ??	STOCK GK HP00 P001	Renewal of Boiler Tubes	Eqc001 FACTORY BOILER no 1	
22	W0038	Start ??	STOCK GK HP00 P000	Welding Repairs	Eqc001 FACTORY BOILER no 1	

Slide 1

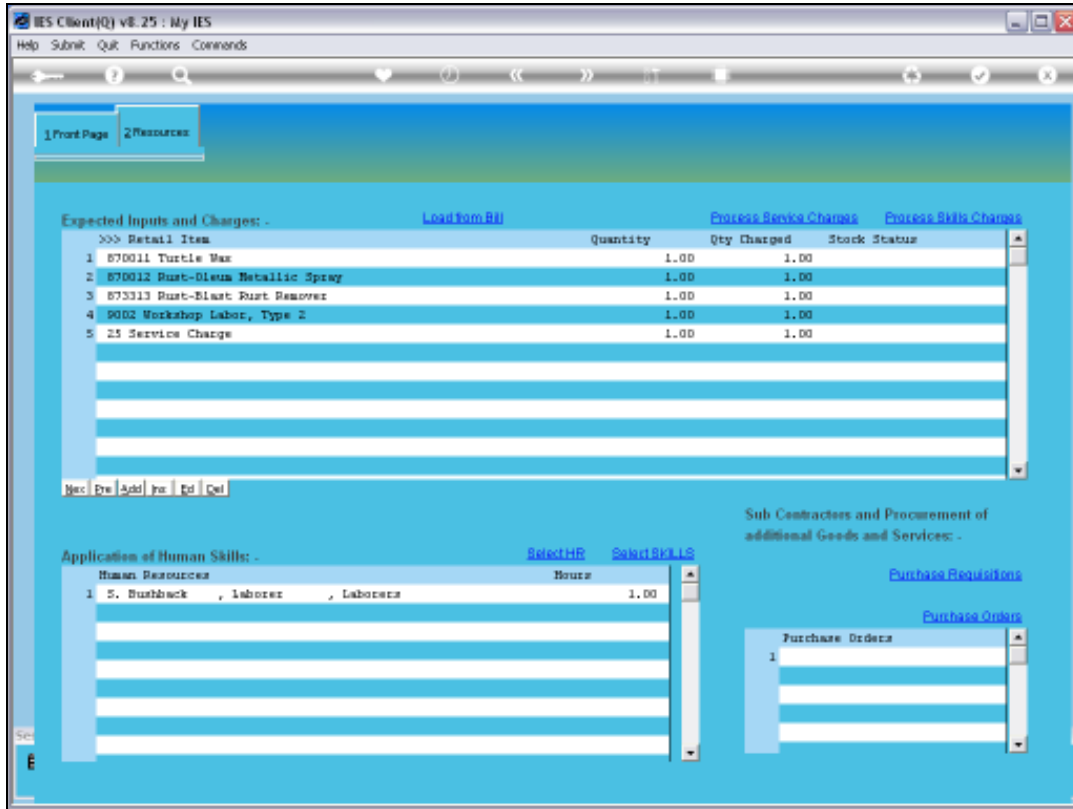
Slide notes: We will now look at how we close a Maintenance Event that is complete.



Slide 2
Slide notes:

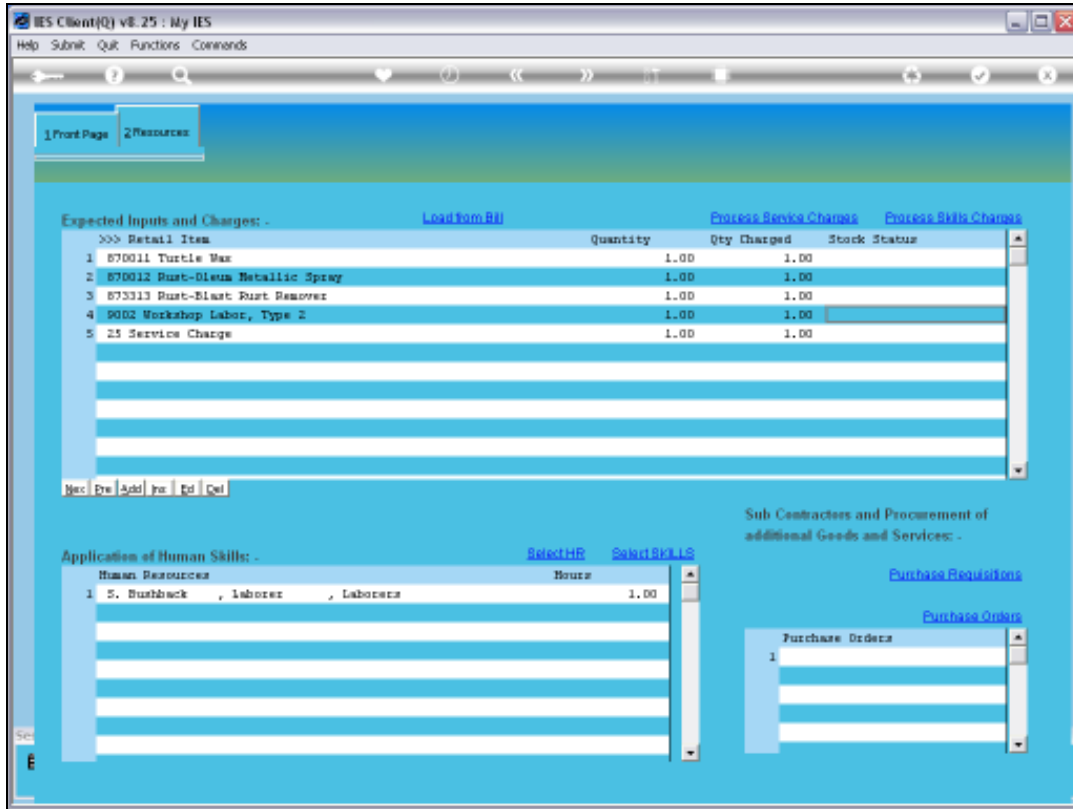


Slide 3
Slide notes:



Slide 4

Slide notes: The Charges for Resources should be complete. If we try to close the Event while some Resources that are listed have not yet been charged, then the system will refuse and insist that those Items be charged first, or removed.



Slide 5
Slide notes:

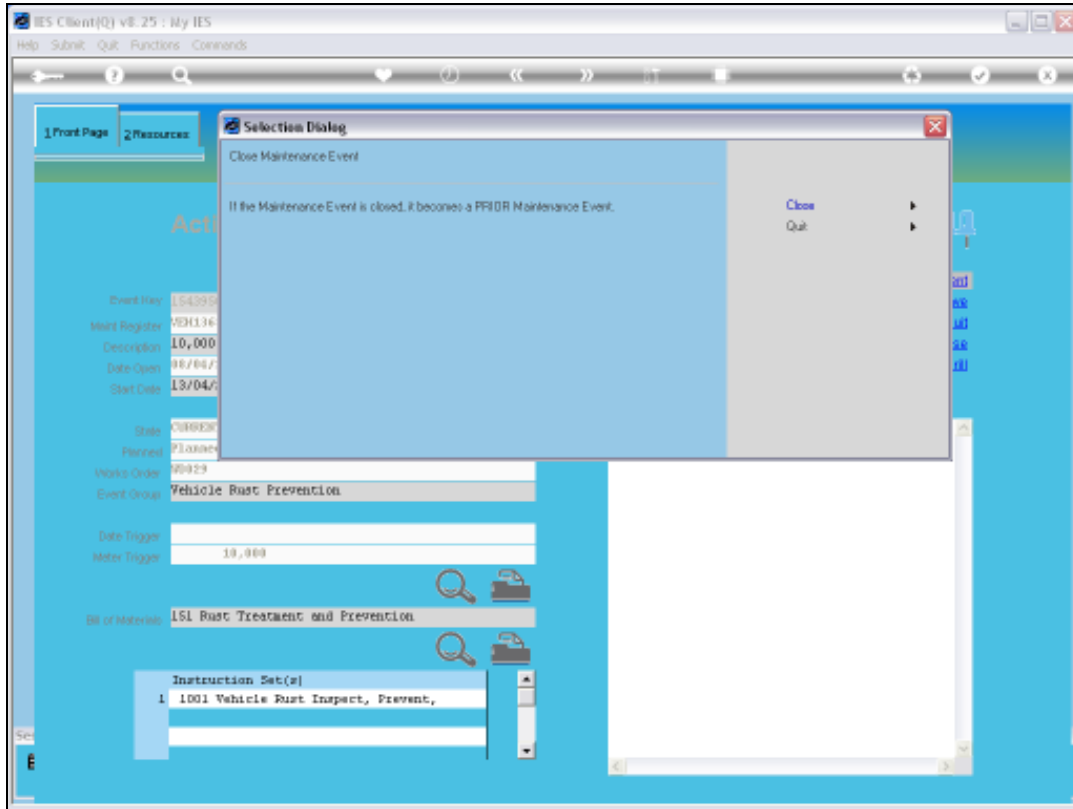
The screenshot displays the IES Client v8.25 interface. The window title is "IES Client(v8.25) : My IES". The menu bar includes "Help", "Submit", "Quit", "Functions", and "Comments". The interface has a blue header with "1 Front Page" and "2 Resources" tabs. The main content area is titled "Active Maintenance Event" and features a form with the following fields:

- Event No: 1542950953
- Plant Register: 2001363 KELARX 2498, CB0291
- Description: 10,000 Vehicle Rust Inspect, Prevent
- Date Open: 18/04/2010
- Start Date: 13/04/2010
- State: CURRENT
- Planned: Planned
- Work Order: 20029
- Event Group: Vehicle Rust Prevention
- Date Trigger: [Empty]
- Water Trigger: 10,000
- Bill of Material: ISI Rust Treatment and Prevention
- Instruction Set(s): 1 1001 Vehicle Rust Inspect, Prevent,

On the right side, there are three user icons and a list of actions: "Close Event", "Risk", "Quit", "Correct/Revers", and "Job Done". A "Notes" field is also present on the right.

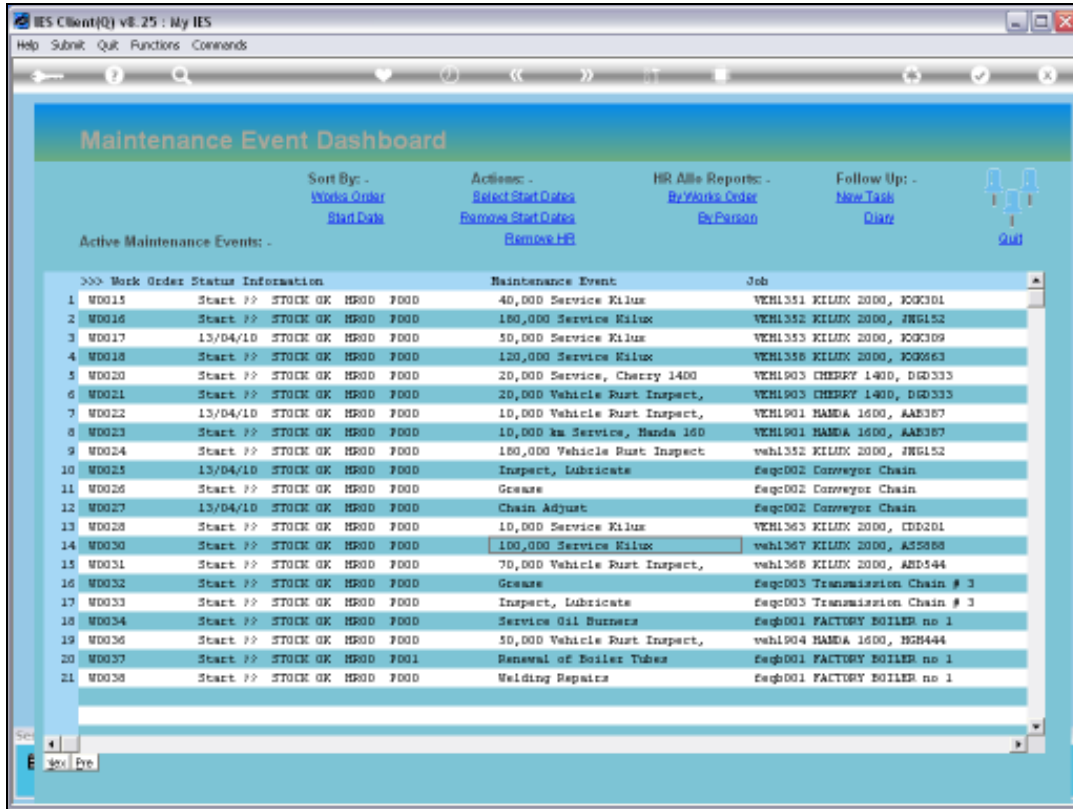
Slide 6

Slide notes: When we are satisfied that all Resources have been charged, we may choose 'Close Event'.



Slide 7

Slide notes: A Confirmation Option pops up.




Slide 8

Slide notes: And when we close the Event, it disappears from the Active Dashboard.

IES Client v8.25: My IES

Help Submit Quit Functions Commands

Maintenance Event Dashboard

Sort By: - [Work Order](#) Actions: - [Select Start Dates](#) HR All Reports: - [By Work Order](#) Follow Up: - [New Task](#)
[Start Date](#) [Remove Start Dates](#) [By Person](#) [Date](#)  [Quit](#)
Active Maintenance Events: - [Remove HR](#)

>>> Work Order Status Information		Maintenance Event	Job
1	W0015 Start ?? STOCK GK HP00 F000	40,000 Service Kilux	VEH1351 KILUX 2000, K0K301
2	W0016 Start ?? STOCK GK HP00 F000	180,000 Service Kilux	VEH1352 KILUX 2000, JRG152
3	W0017 13/04/10 STOCK GK HP00 F000	50,000 Service Kilux	VEH1353 KILUX 2000, K0K309
4	W0018 Start ?? STOCK GK HP00 F000	120,000 Service Kilux	VEH1356 KILUX 2000, K0M663
5	W0020 Start ?? STOCK GK HP00 F000	20,000 Service, Cherry 1400	VEH1903 CHERRY 1400, DGD333
6	W0021 Start ?? STOCK GK HP00 F000	20,000 Vehicle Rust Inspect,	VEH1903 CHERRY 1400, DGD333
7	W0022 13/04/10 STOCK GK HP00 F000	10,000 Vehicle Rust Inspect,	VEH1901 HANDA 1600, AAE387
8	W0023 Start ?? STOCK GK HP00 F000	10,000 km Service, Handa 160	VEH1901 HANDA 1600, AAE387
9	W0024 Start ?? STOCK GK HP00 F000	180,000 Vehicle Rust Inspect	veh1352 KILUX 2000, JRG152
10	W0025 13/04/10 STOCK GK HP00 F000	Inspect, Lubricate	Seq002 Conveyor Chain
11	W0026 Start ?? STOCK GK HP00 F000	Grease	Seq002 Conveyor Chain
12	W0027 13/04/10 STOCK GK HP00 F000	Chain Adjust	Seq002 Conveyor Chain
13	W0028 Start ?? STOCK GK HP00 F000	10,000 Service Kilux	VEH1363 KILUX 2000, DDD201
14	W0030 Start ?? STOCK GK HP00 F000	100,000 Service Kilux	veh1367 KILUX 2000, A35888
15	W0031 Start ?? STOCK GK HP00 F000	70,000 Vehicle Rust Inspect,	veh1368 KILUX 2000, ASD544
16	W0032 Start ?? STOCK GK HP00 F000	Grease	Seq003 Transmission Chain # 3
17	W0033 Start ?? STOCK GK HP00 F000	Inspect, Lubricate	Seq003 Transmission Chain # 3
18	W0034 Start ?? STOCK GK HP00 F000	Service Oil Burners	Seq001 FACTORY BOILER no 1
19	W0036 Start ?? STOCK GK HP00 F000	50,000 Vehicle Rust Inspect,	veh1904 HANDA 1600, H2H444
20	W0037 Start ?? STOCK GK HP00 F001	Renewal of Boiler Tubes	Seq001 FACTORY BOILER no 1
21	W0038 Start ?? STOCK GK HP00 F000	Welding Repairs	Seq001 FACTORY BOILER no 1

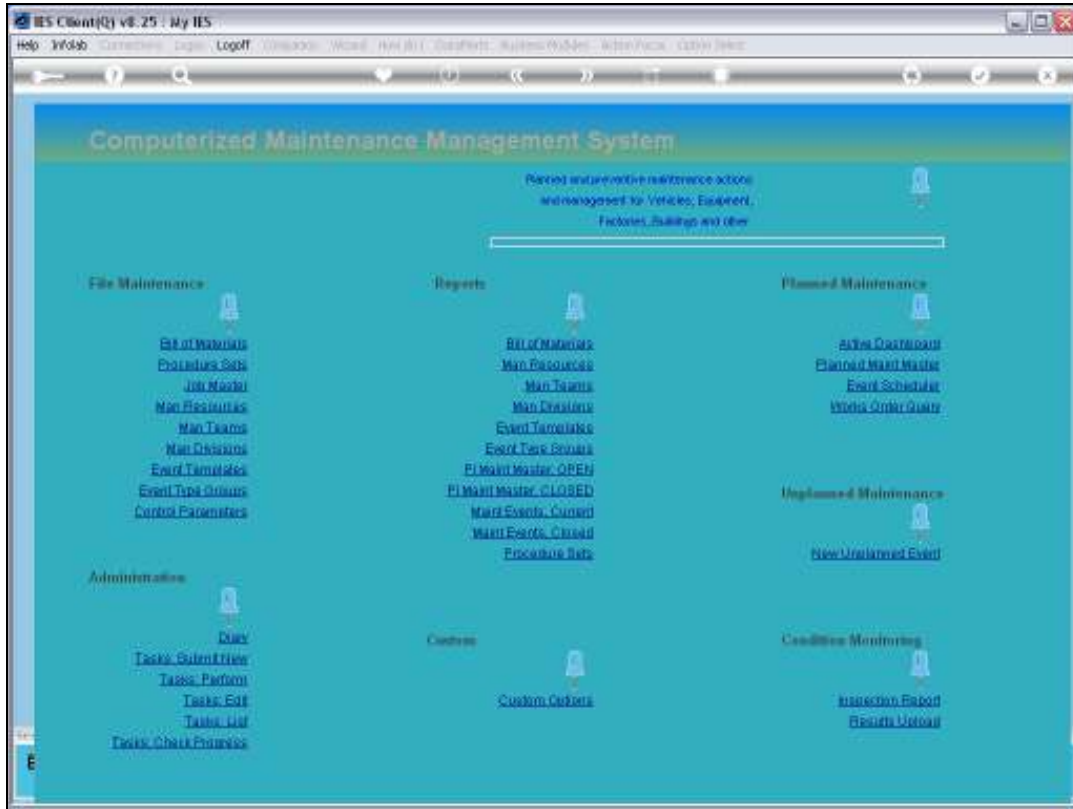
Slide 9
Slide notes:

Maintenance Event Dashboard

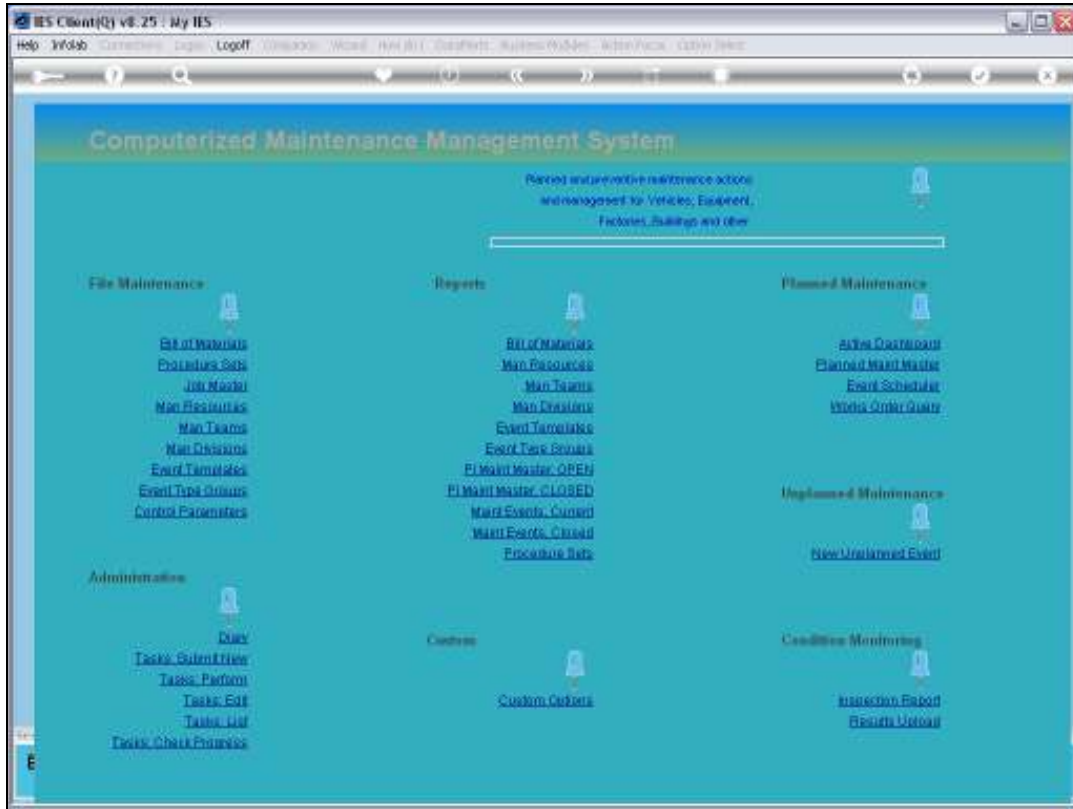
Sort By: - [Work Order](#) Actions: - [Select Start Dates](#) HR All Reports: - [By Work Order](#) Follow Up: - [New Task](#)
[Start Date](#) [Remove Start Dates](#) [By Person](#) [Date](#) [Quit](#)
Active Maintenance Events: - [Remove HR](#)

>>> Work Order Status Information			Maintenance Event	Job
1	W0015	Start ?? STOCK GK HP00 F000	40,000 Service Kilux	VEH1351 KILUX 2000, K0K301
2	W0016	Start ?? STOCK GK HP00 F000	100,000 Service Kilux	VEH1352 KILUX 2000, JRG152
3	W0017	13/04/10 STOCK GK HP00 F000	50,000 Service Kilux	VEH1353 KILUX 2000, K0K309
4	W0018	Start ?? STOCK GK HP00 F000	120,000 Service Kilux	VEH1356 KILUX 2000, K0M663
5	W0020	Start ?? STOCK GK HP00 F000	20,000 Service, Cherry 1400	VEH1903 CHERRY 1400, DGD333
6	W0021	Start ?? STOCK GK HP00 F000	20,000 Vehicle Rust Inspect,	VEH1903 CHERRY 1400, DGD333
7	W0022	13/04/10 STOCK GK HP00 F000	10,000 Vehicle Rust Inspect,	VEH1901 HANDA 1600, AAE387
8	W0023	Start ?? STOCK GK HP00 F000	10,000 km Service, Handa 160	VEH1901 HANDA 1600, AAE387
9	W0024	Start ?? STOCK GK HP00 F000	100,000 Vehicle Rust Inspect	veh1352 KILUX 2000, JRG152
10	W0025	13/04/10 STOCK GK HP00 F000	Inspect, Lubricate	Seq002 Conveyor Chain
11	W0026	Start ?? STOCK GK HP00 F000	Grease	Seq002 Conveyor Chain
12	W0027	13/04/10 STOCK GK HP00 F000	Chain Adjust	Seq002 Conveyor Chain
13	W0028	Start ?? STOCK GK HP00 F000	10,000 Service Kilux	VEH1363 KILUX 2000, DDD201
14	W0030	Start ?? STOCK GK HP00 F000	100,000 Service Kilux	veh1367 KILUX 2000, A35888
15	W0031	Start ?? STOCK GK HP00 F000	70,000 Vehicle Rust Inspect,	veh1368 KILUX 2000, ASD544
16	W0032	Start ?? STOCK GK HP00 F000	Grease	Seq003 Transmission Chain # 3
17	W0033	Start ?? STOCK GK HP00 F000	Inspect, Lubricate	Seq003 Transmission Chain # 3
18	W0034	Start ?? STOCK GK HP00 F000	Service Oil Burners	Seq001 FACTORY BOILER no 1
19	W0036	Start ?? STOCK GK HP00 F000	50,000 Vehicle Rust Inspect,	veh1904 HANDA 1600, H2H444
20	W0037	Start ?? STOCK GK HP00 F001	Renewal of Boiler Tubes	Seq001 FACTORY BOILER no 1
21	W0038	Start ?? STOCK GK HP00 F000	Welding Repairs	Seq001 FACTORY BOILER no 1

Slide 10
Slide notes:



Slide 11
Slide notes:

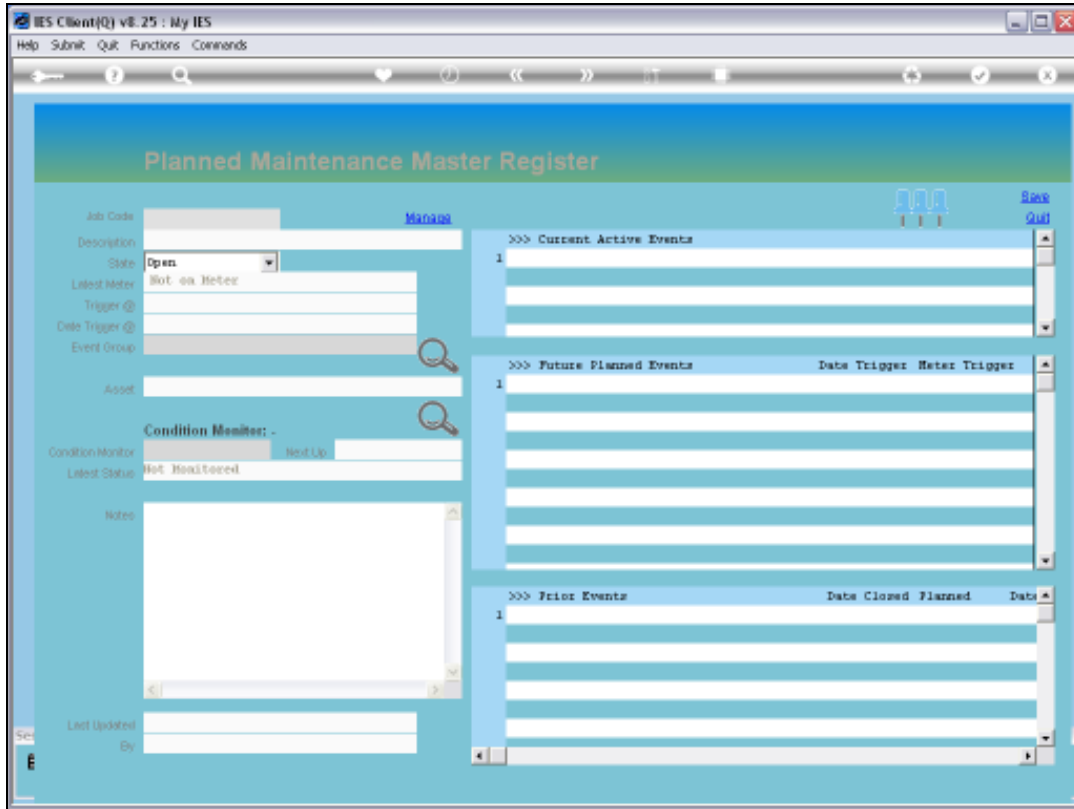


Slide 12

Slide notes: If we should query the Master Maintenance Item now, we will see that the Event has become a Prior Event.

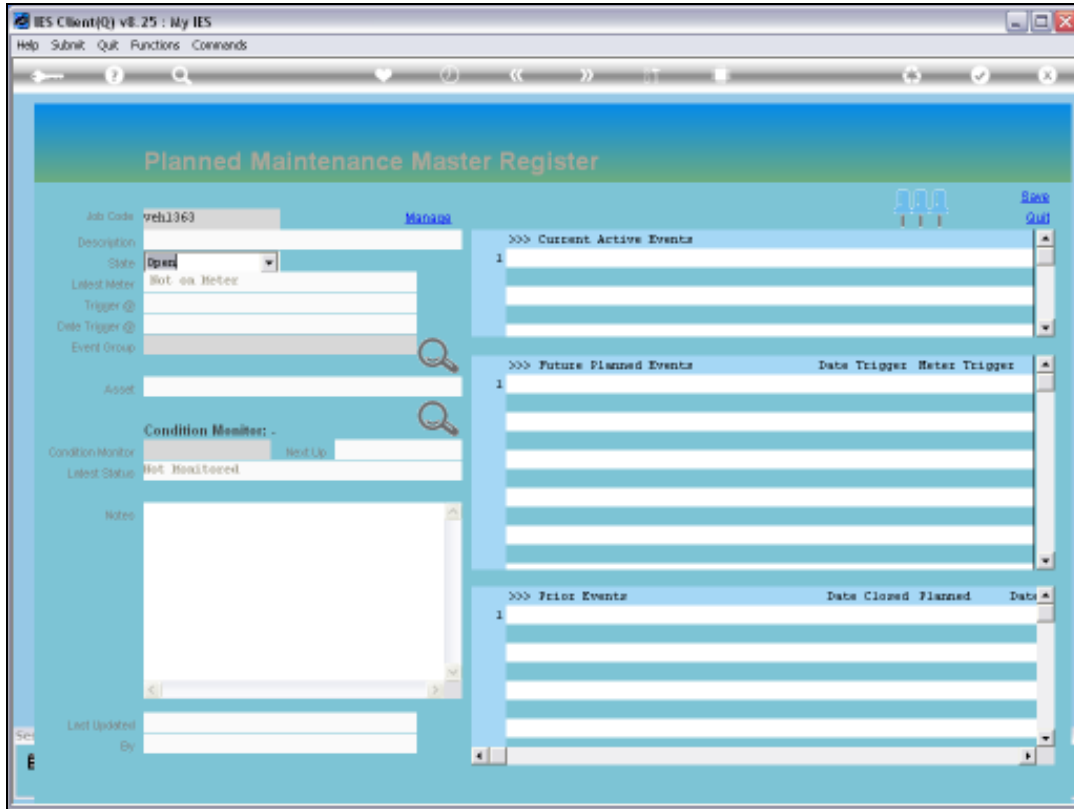


Slide 13
Slide notes:



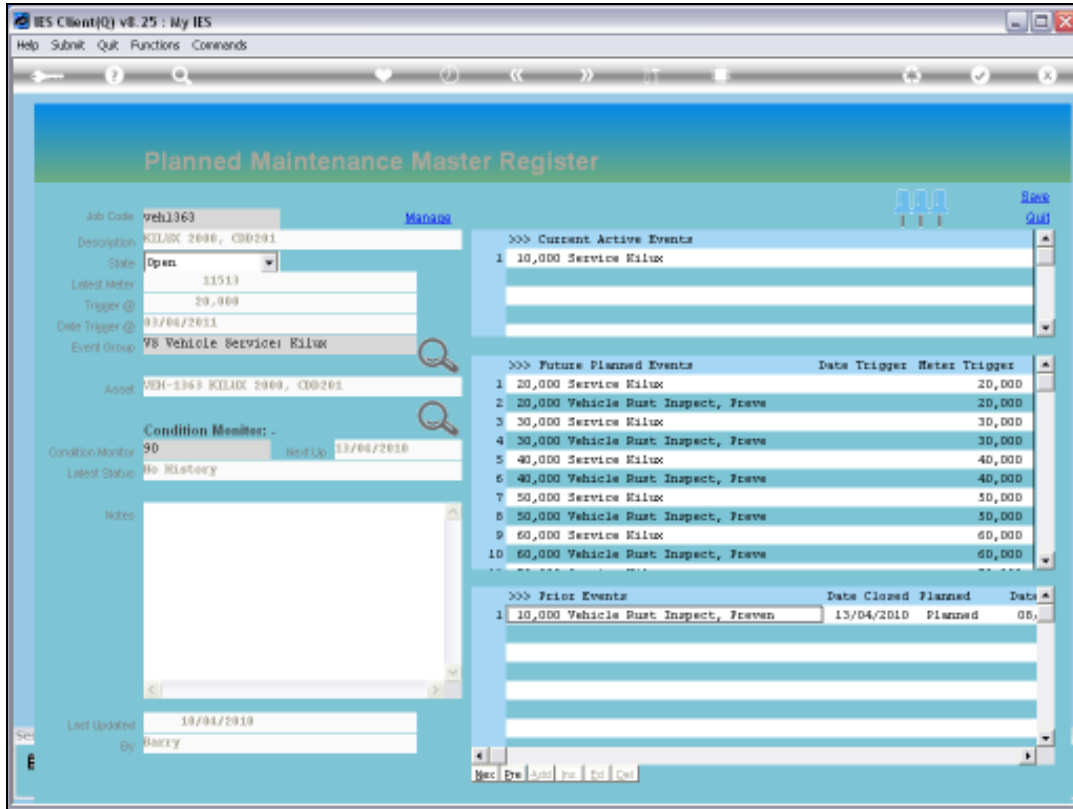
Slide 14

Slide notes:



Slide 15

Slide notes:



Slide 16

Slide notes: Notice the appearance of the Event at the Prior Events group.

Planned Maintenance Master Register

Job Code: **veh1363** [Manage](#)

Description: **KELUX 2000, CD0201**

State: **Open**

Latest Meter: **11513**

Trigger @: **20,000**

Date Trigger @: **03/06/2011**

Event Group: **78 Vehicle Service: Kilux**

Asset: **VEH-1363 KELUX 2000, CD0201**

Condition Monitor: **90** Next Up: **13/06/2010**

Latest Status: **No History**

Notes:

Last Updated: **10/04/2010**

By: **Ricky**

>>> Current Active Events

ID	Description
1	10,000 Service Kilux

>>> Future Planned Events

ID	Description	Date Trigger	Meter	Trigger
1	20,000 Service Kilux		20,000	
2	20,000 Vehicle Rust Inspect, Frave		20,000	
3	30,000 Service Kilux		30,000	
4	30,000 Vehicle Rust Inspect, Frave		30,000	
5	40,000 Service Kilux		40,000	
6	40,000 Vehicle Rust Inspect, Frave		40,000	
7	50,000 Service Kilux		50,000	
8	50,000 Vehicle Rust Inspect, Frave		50,000	
9	60,000 Service Kilux		60,000	
10	60,000 Vehicle Rust Inspect, Frave		60,000	

>>> Prior Events

ID	Description	Date Closed	Planned	Date
1	10,000 Vehicle Rust Inspect, Fraven	13/04/2010	Planned	05,

Slide 17
Slide notes: