

Maintenance Event Dashboard

Sort By: [Work Order](#) | [Start Date](#) | [Start Date](#) | [Remove Start Dates](#) | [Remove HR](#)

Actions: [Select Start Dates](#) | [Remove Start Dates](#) | [Remove HR](#)

HR All Reports: [By Work Center](#) | [By Person](#)

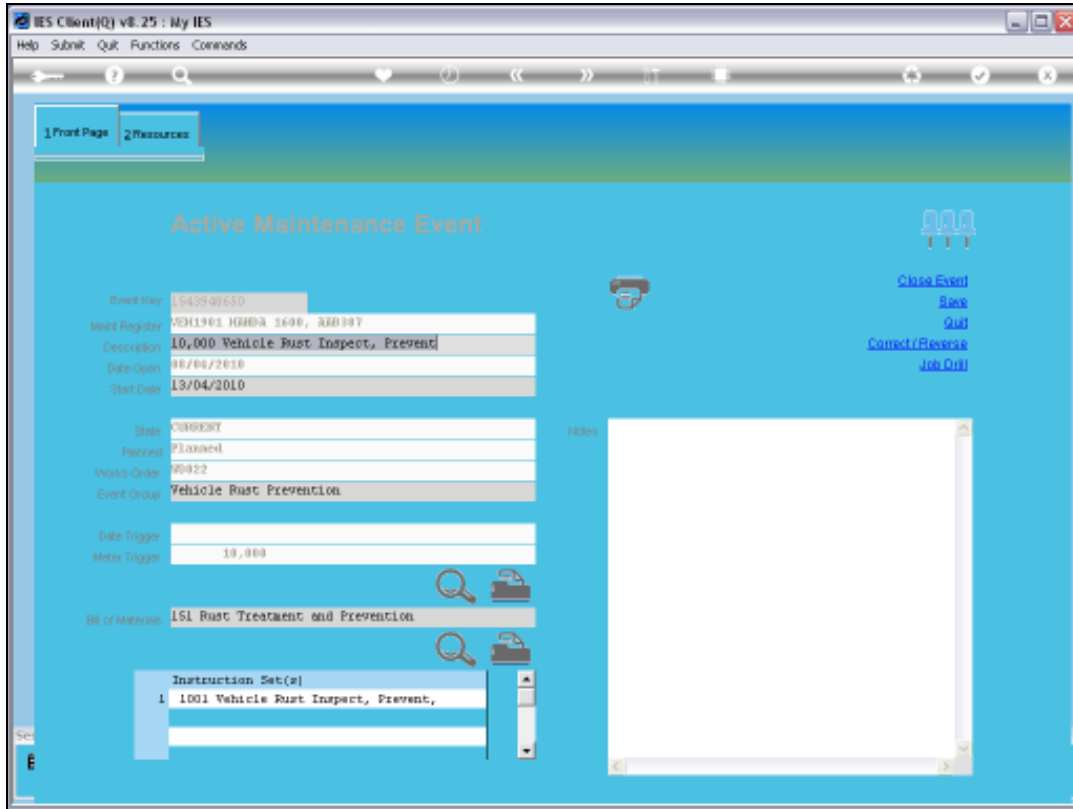
Follow Up: [New Task](#) | [Diary](#)

Active Maintenance Events:

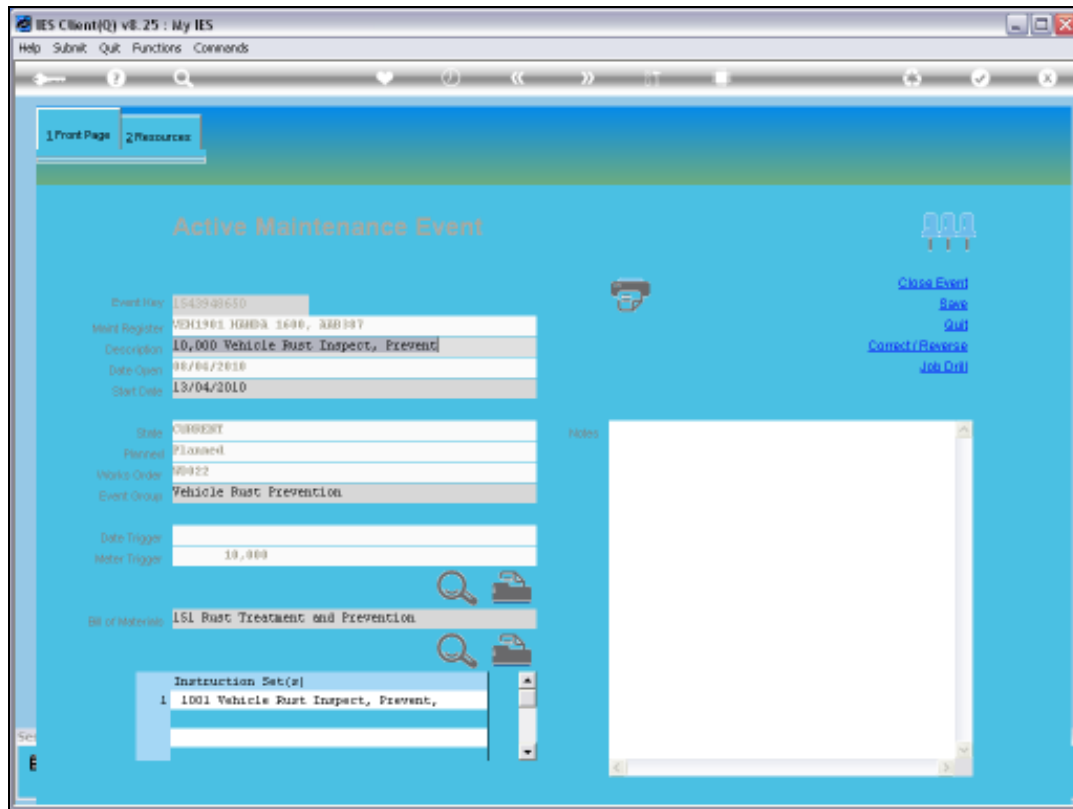
>>> Work Order	Status	Information	Maintenance Event	Job	
1	W0015	Start ??	STOCK GK HP00 P000	40,000 Service Kilux	VEH1351 KILUX 2000, K0K301
2	W0016	Start ??	STOCK GK HP00 P000	180,000 Service Kilux	VEH1352 KILUX 2000, JHG152
3	W0017	13/04/10	STOCK GK HP00 P000	50,000 Service Kilux	VEH1353 KILUX 2000, K0K309
4	W0018	Start ??	STOCK GK HP00 P000	120,000 Service Kilux	VEH1356 KILUX 2000, K0K363
5	W0020	Start ??	STOCK GK HP00 P000	20,000 Service, Cherry 1400	VEH1903 CHERRY 1400, D60333
6	W0021	Start ??	STOCK GK HP00 P000	20,000 Vehicle Rust Inspect,	VEH1903 CHERRY 1400, D60333
7	W0022	13/04/10	STOCK GK HP00 P000	10,000 Vehicle Rust Inspect,	VEH1901 HANDA 1600, AAE367
8	W0023	Start ??	STOCK GK HP00 P000	10,000 ka Service, Honda 160	VEH1901 HANDA 1600, AAE367
9	W0024	Start ??	STOCK GK HP00 P000	180,000 Vehicle Rust Inspect	veh1352 KILUX 2000, JHG152
10	W0025	13/04/10	STOCK GK HP00 P000	Inspect, Lubricate	Eqc002 Conveyor Chain
11	W0026	Start ??	STOCK GK HP00 P000	Grease	Eqc002 Conveyor Chain
12	W0027	13/04/10	STOCK GK HP00 P000	Chain Adjust	Eqc002 Conveyor Chain
13	W0028	Start ??	STOCK GK HP00 P000	10,000 Service Kilux	VEH1363 KILUX 2000, CDD201
14	W0029	Start ??	STOCK ?? HP01 P000	10,000 Vehicle Rust Inspect,	VEH1363 KILUX 2000, CDD201
15	W0030	Start ??	STOCK GK HP00 P000	100,000 Service Kilux	veh1367 KILUX 2000, AS2988
16	W0031	Start ??	STOCK GK HP00 P000	70,000 Vehicle Rust Inspect,	veh1366 KILUX 2000, ASD544
17	W0032	Start ??	STOCK GK HP00 P000	Grease	Eqc003 Transmission Chain # 3
18	W0033	Start ??	STOCK GK HP00 P000	Inspect, Lubricate	Eqc003 Transmission Chain # 3
19	W0034	Start ??	STOCK GK HP00 P000	Service Oil Burners	Eqc001 FACTORY BOILER no 1
20	W0036	Start ??	STOCK GK HP00 P000	50,000 Vehicle Rust Inspect,	veh1904 HANDA 1600, H2H444
21	W0037	Start ??	STOCK GK HP00 P001	Renewal of Boiler Tubes	Eqc001 FACTORY BOILER no 1
22	W0038	Start ??	STOCK GK HP00 P000	Welding Repairs	Eqc001 FACTORY BOILER no 1

Slide 1

Slide notes: While working with an Active Maintenance Event, we have a need to load Resource Items. We will now have a look at how that is done.

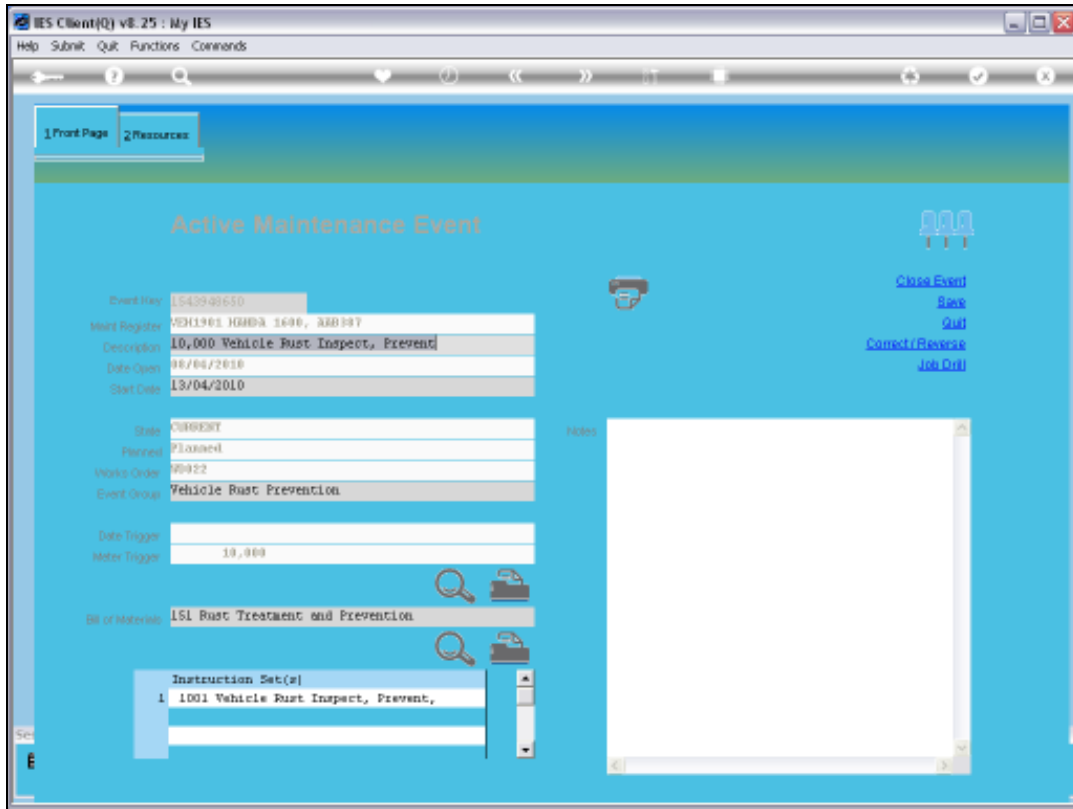


Slide 2
Slide notes:

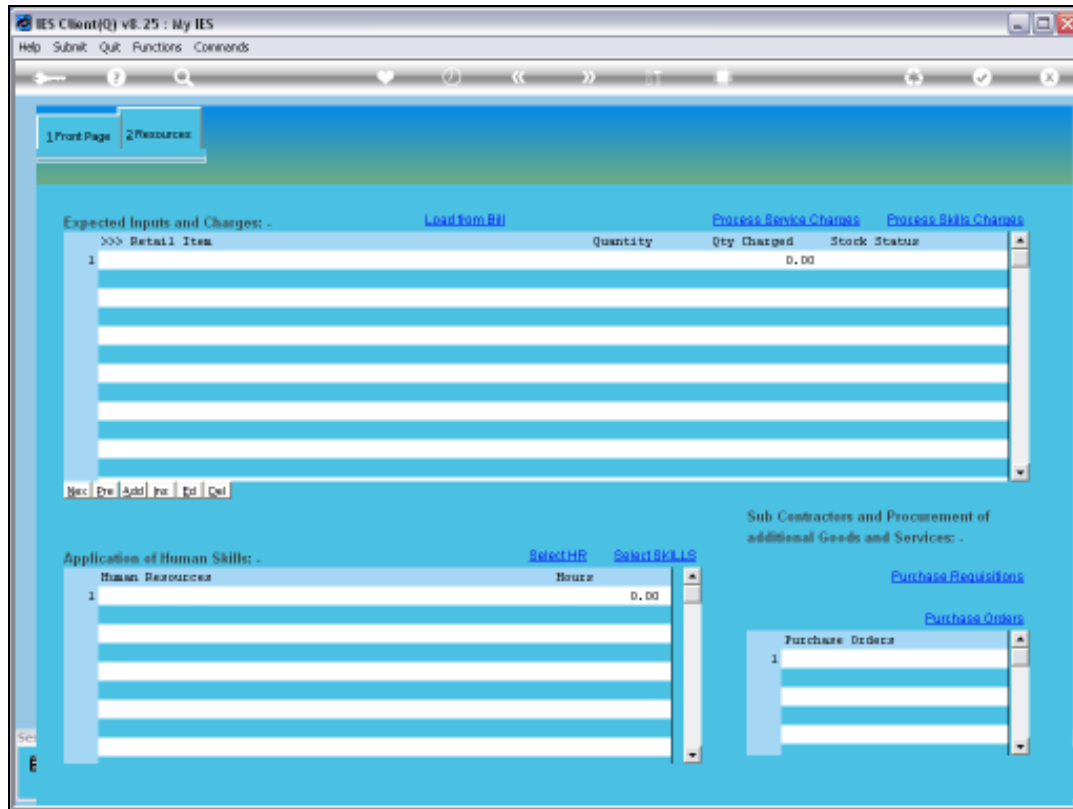


Slide 3

Slide notes: This Event has a Bill of Materials already indicated, but it is never loaded unless we choose to do so.

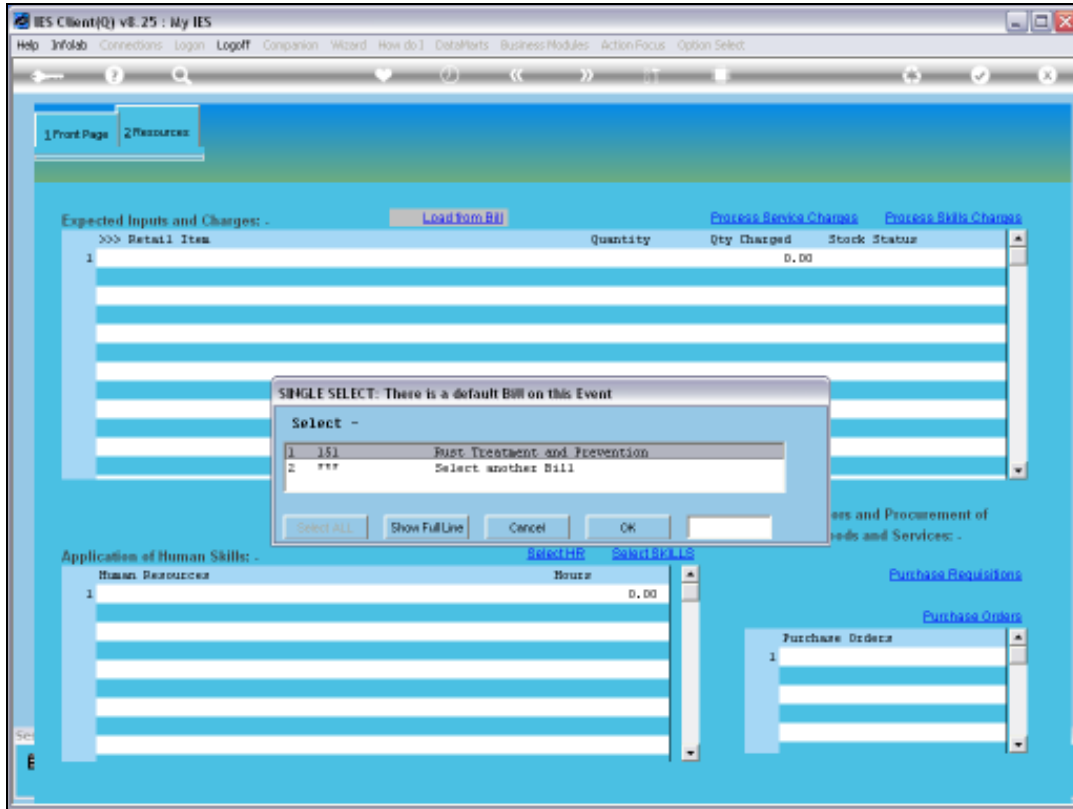


Slide 4
Slide notes:



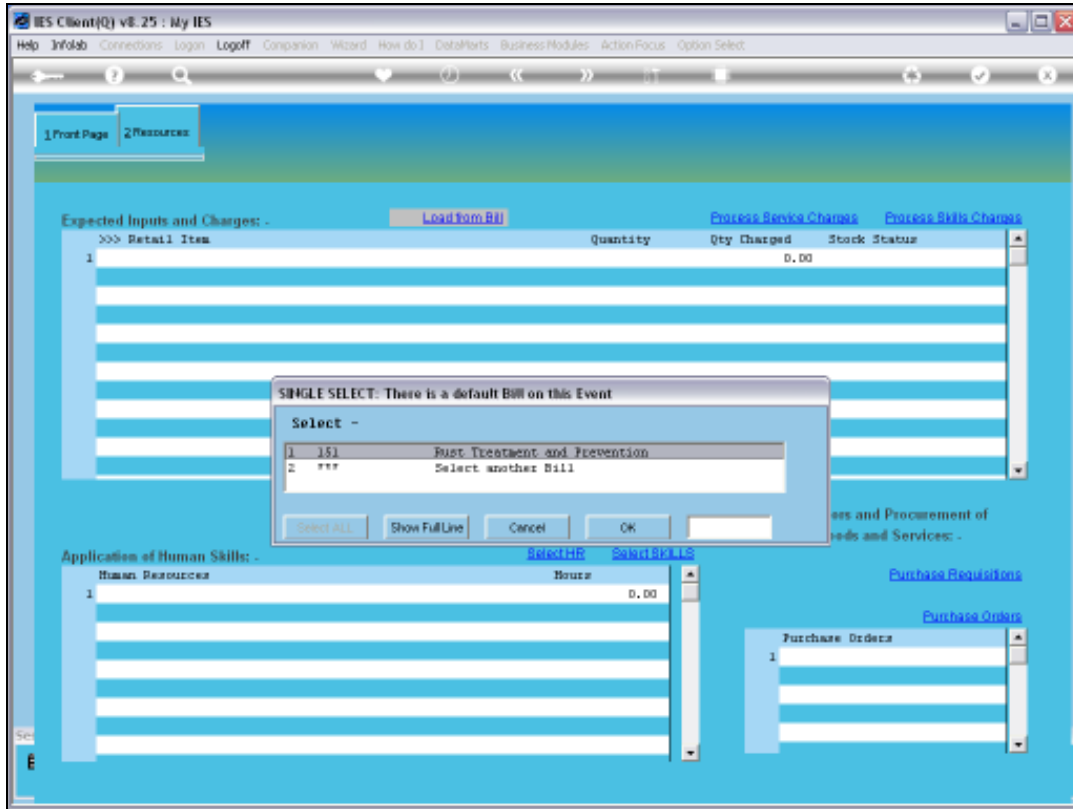
Slide 5

Slide notes: On the Resources tab, we find the area where we load Resource Items that will be utilized by and charged to this Event. We can load from a Bill of Materials.

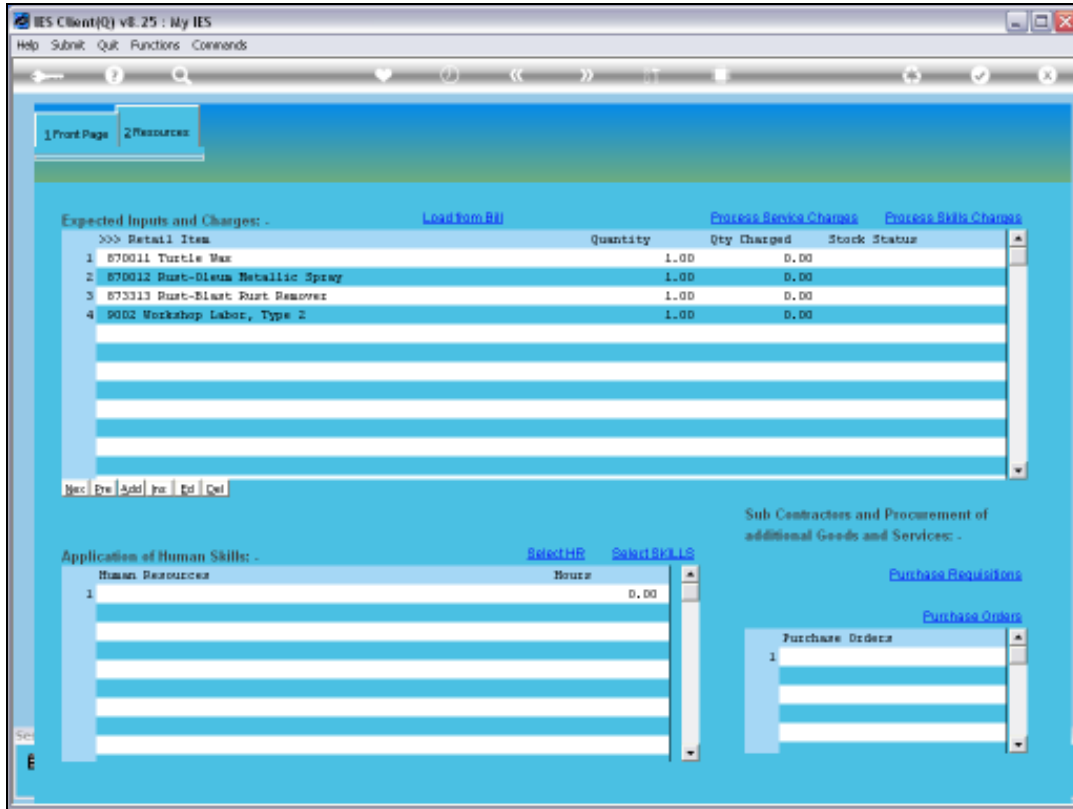


Slide 6

Slide notes: If this Event has a default Bill of Materials indicated, then it is offered. We can choose that Bill, or load from an entirely different Bill of Materials, or both. We will use the default Bill in this case.

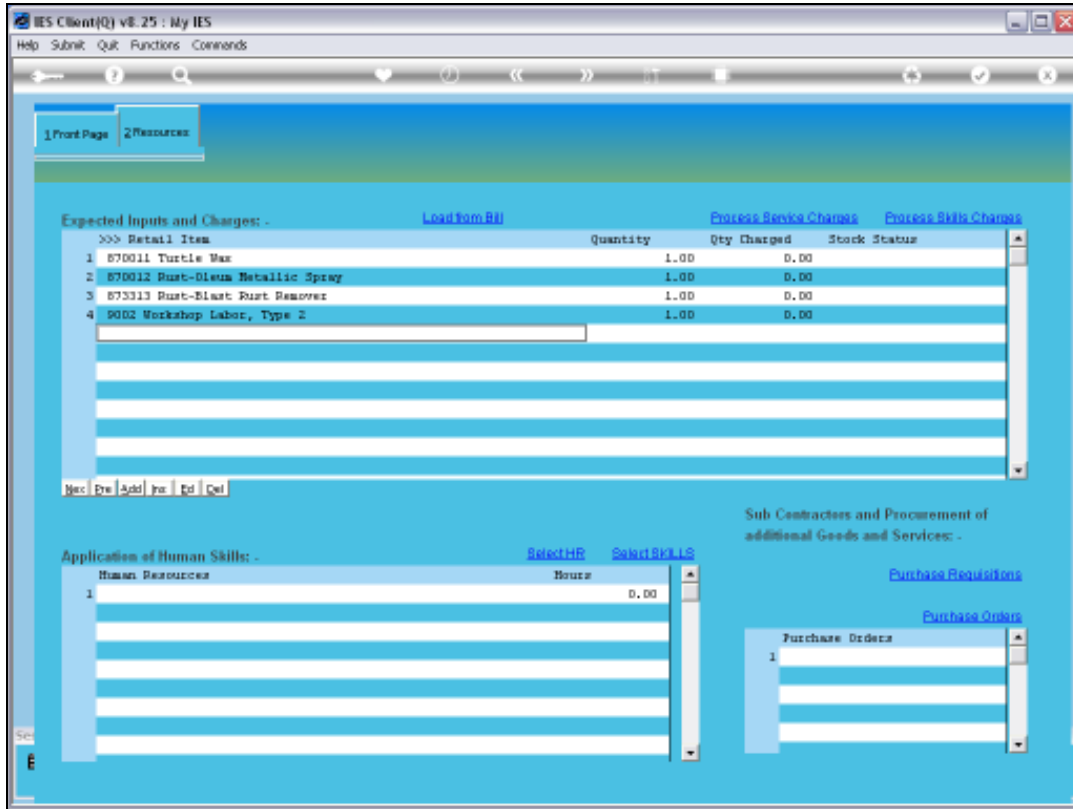


Slide 7
Slide notes:



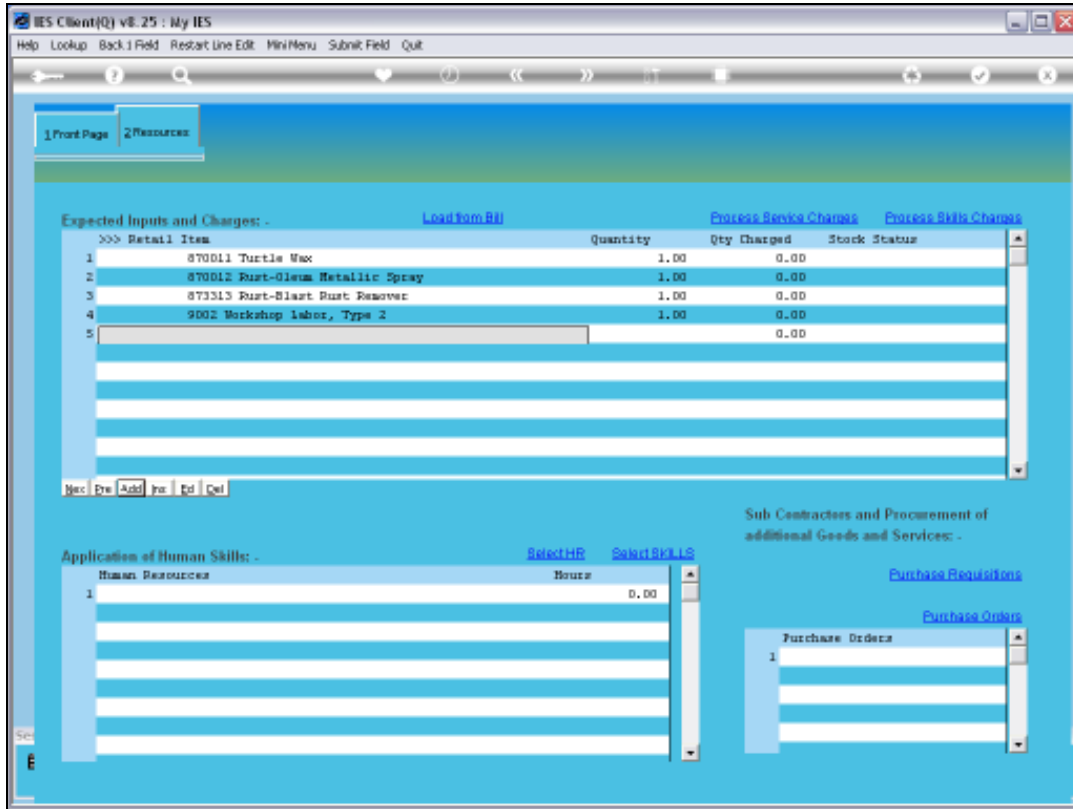
Slide 8

Slide notes: When we select the Bill, the standard list of Items as specified on the Bill Master is loaded for this Event. We can of course make changes, change quantities or even delete some items.

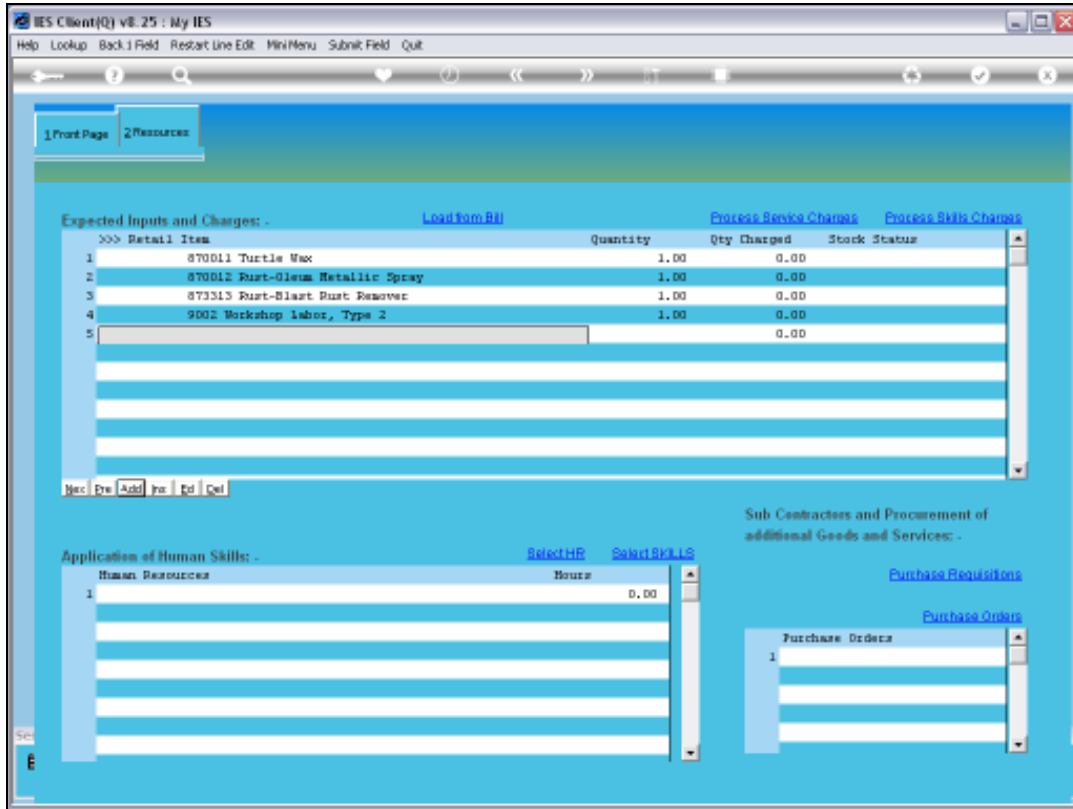


Slide 9

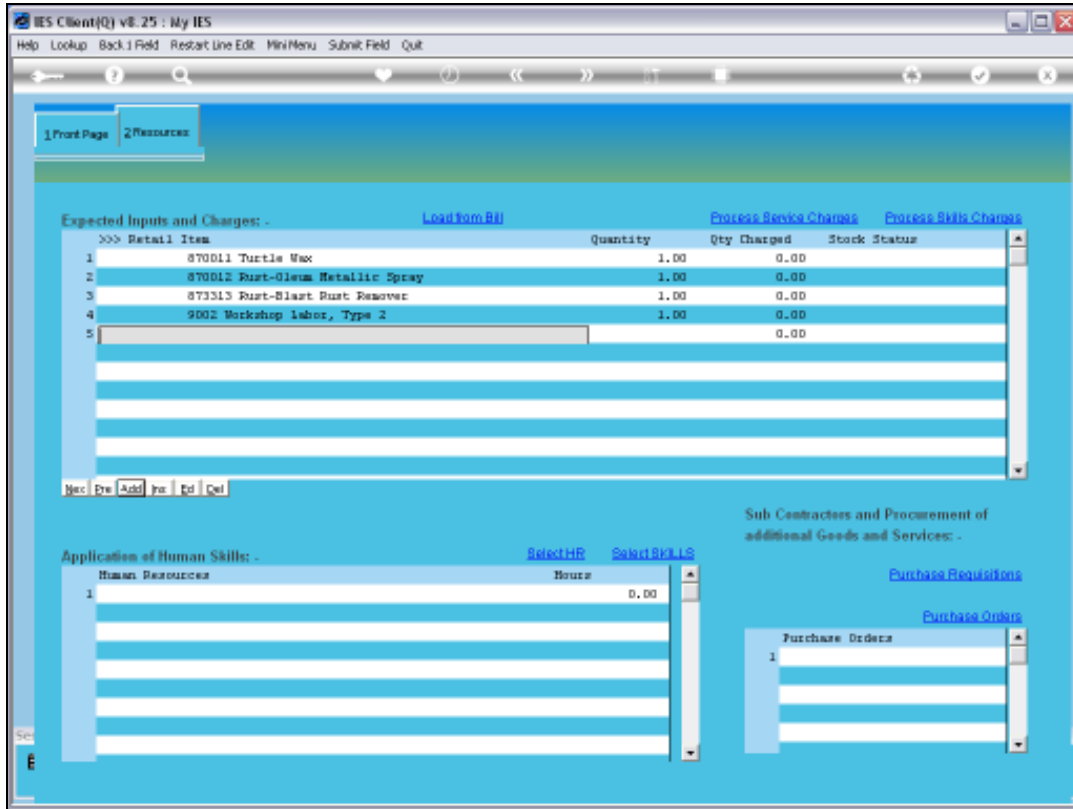
Slide notes: We can also manually add any number of Items from the Catalog, without using a Bill or in addition to 1 or more Bills.



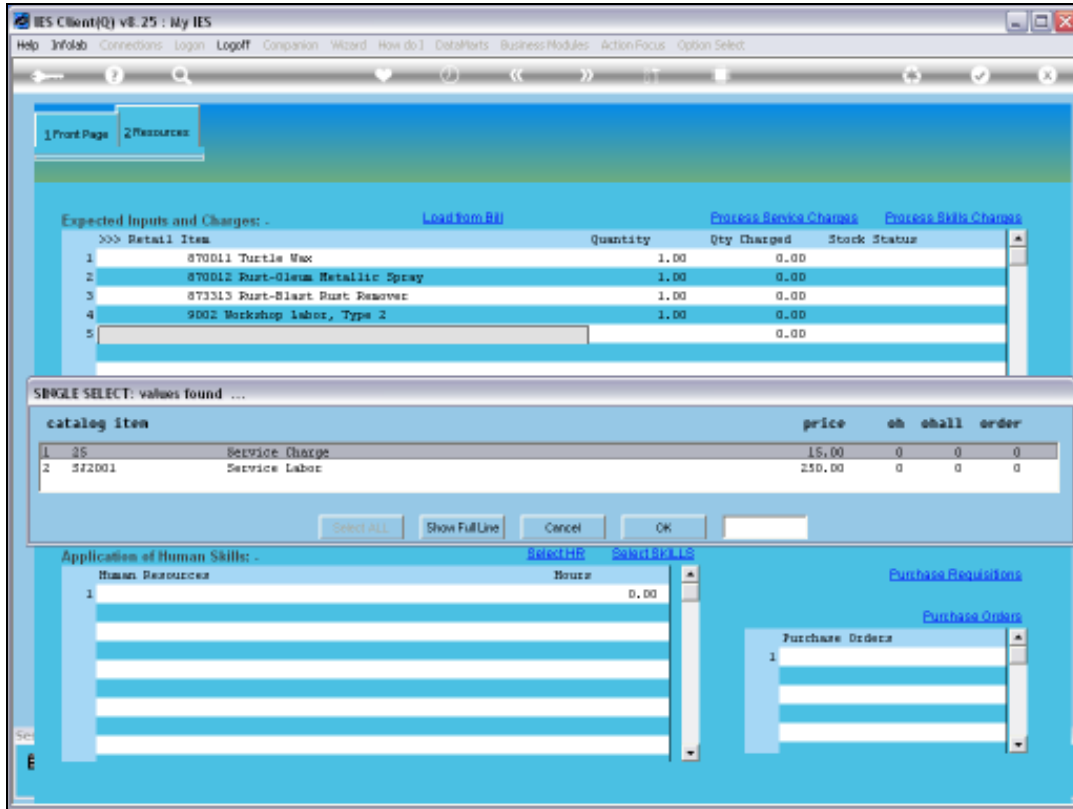
Slide 10
Slide notes:



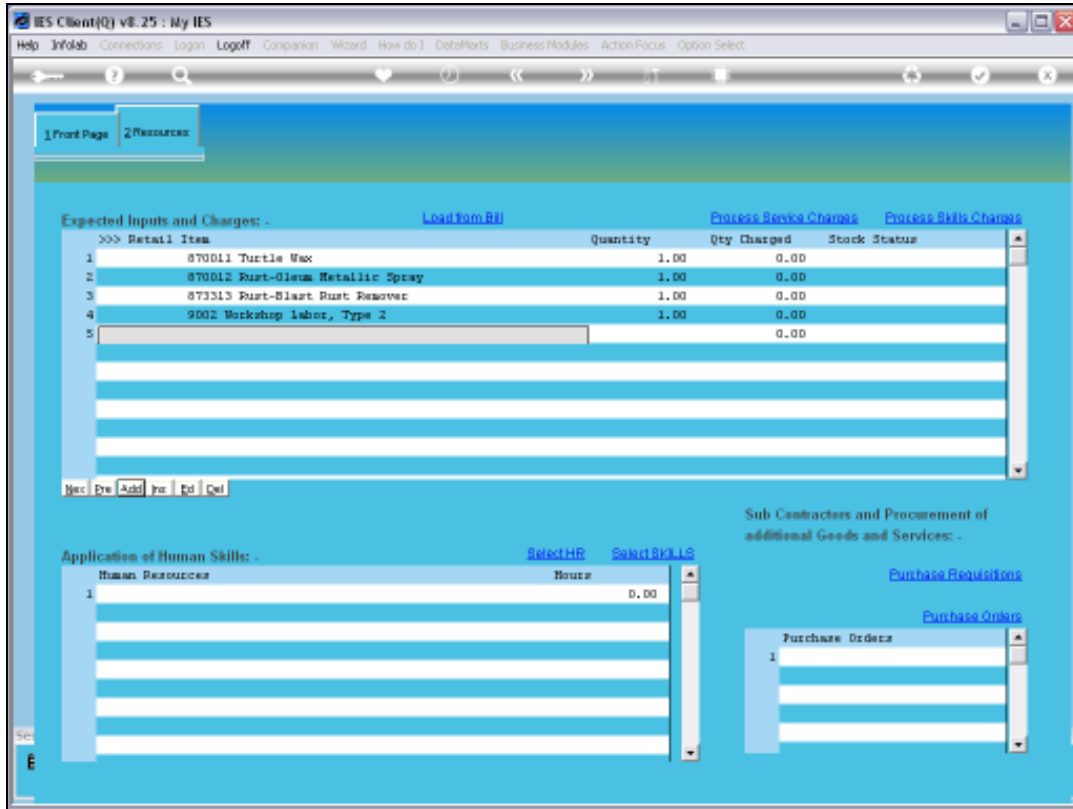
Slide 11
Slide notes:



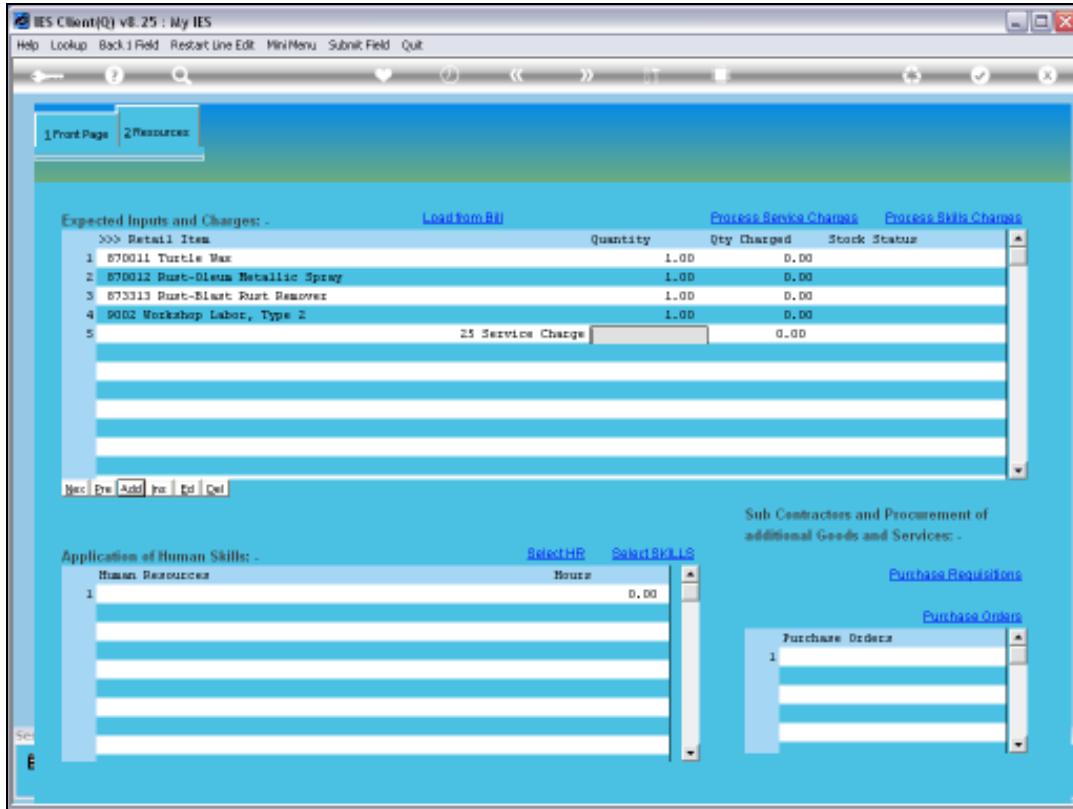
Slide 12
Slide notes:



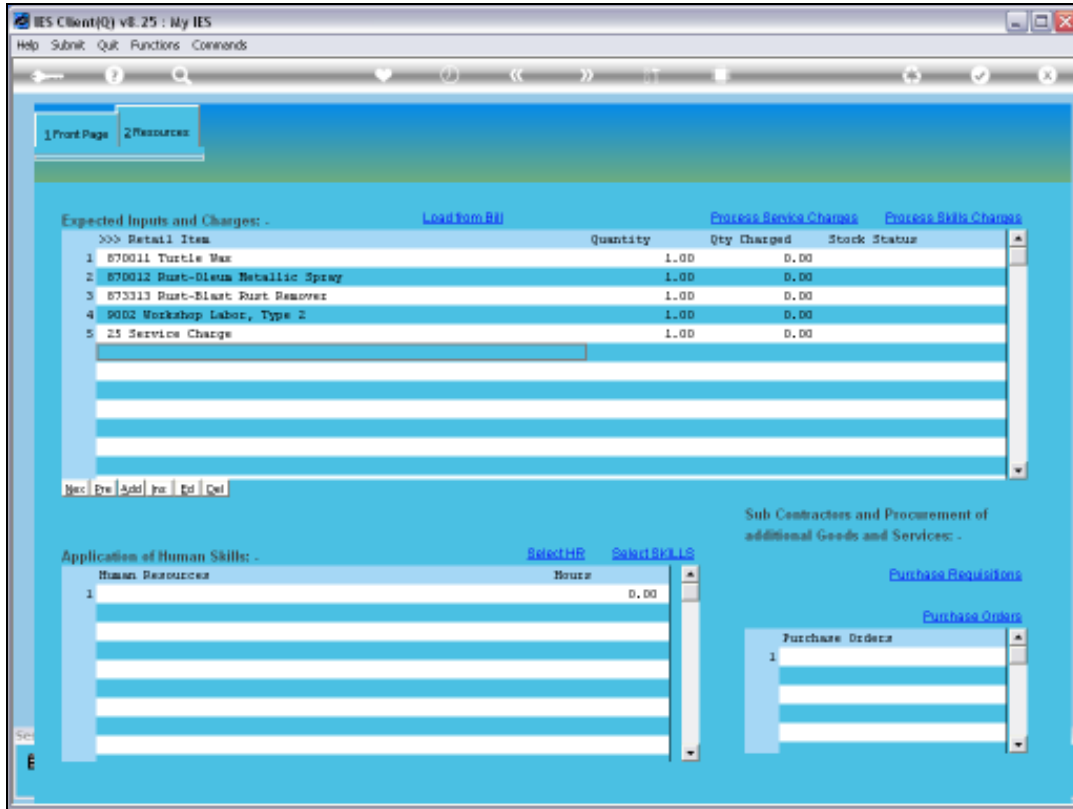
Slide 13
Slide notes:



Slide 14
 Slide notes:



Slide 15
Slide notes:



Slide 16

Slide notes: So it is quite easy to populate all required resources for the Maintenance Event.