

IES Client v8.25 : My IES

Help Submit Quit Functions Commands

1 Front Page 2 Resources

### Active Maintenance Event

Event No: 1042950253

Plant Register: 9811363 KILAK 2000, CBD291

Description: 10,000 Vehicle Rust Inspect, Prevent

Date Open: 06/04/2010

Start Date:

State: CURRENT

Planned: Planned

Work Order: W0023

Event Group: Vehicle Rust Prevention

Date Trigger:

Meter Trigger: 10,000

Bill of Materials: 101 Rust Treatment and Prevention

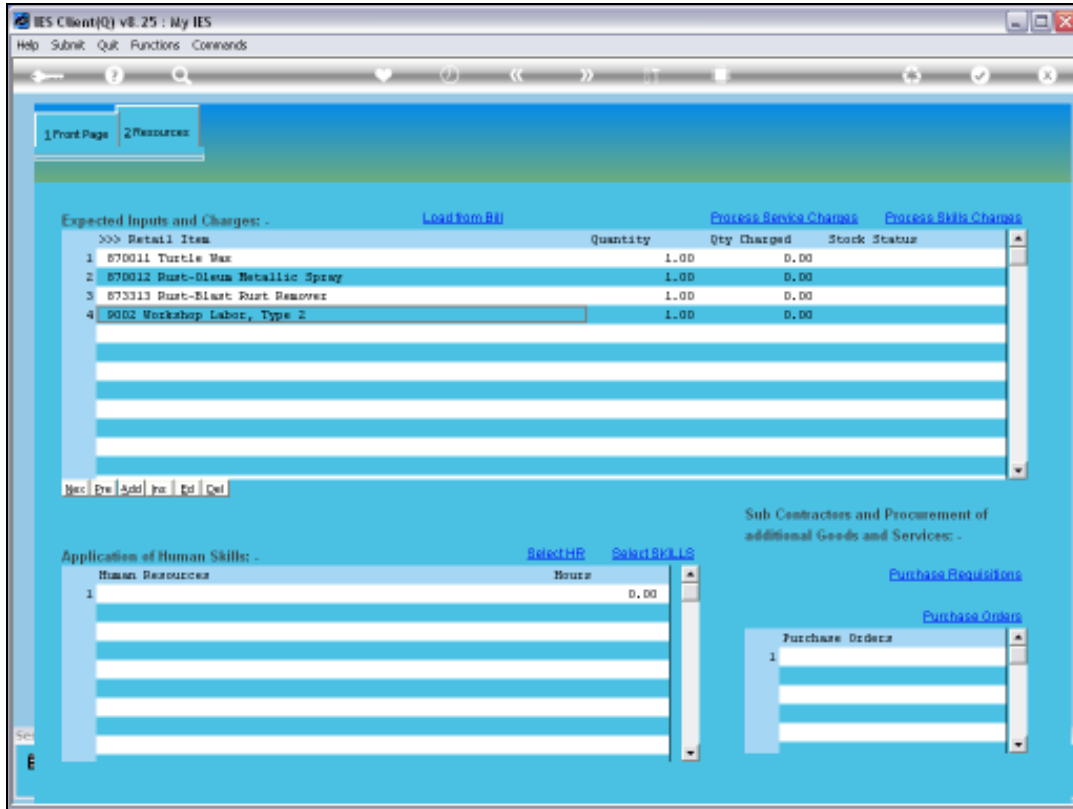
Instruction Set(s):

- 1001 Vehicle Rust Inspect, Prevent,

Buttons: Close Event, Back, Quit, Connect/Reverse, Job Drill

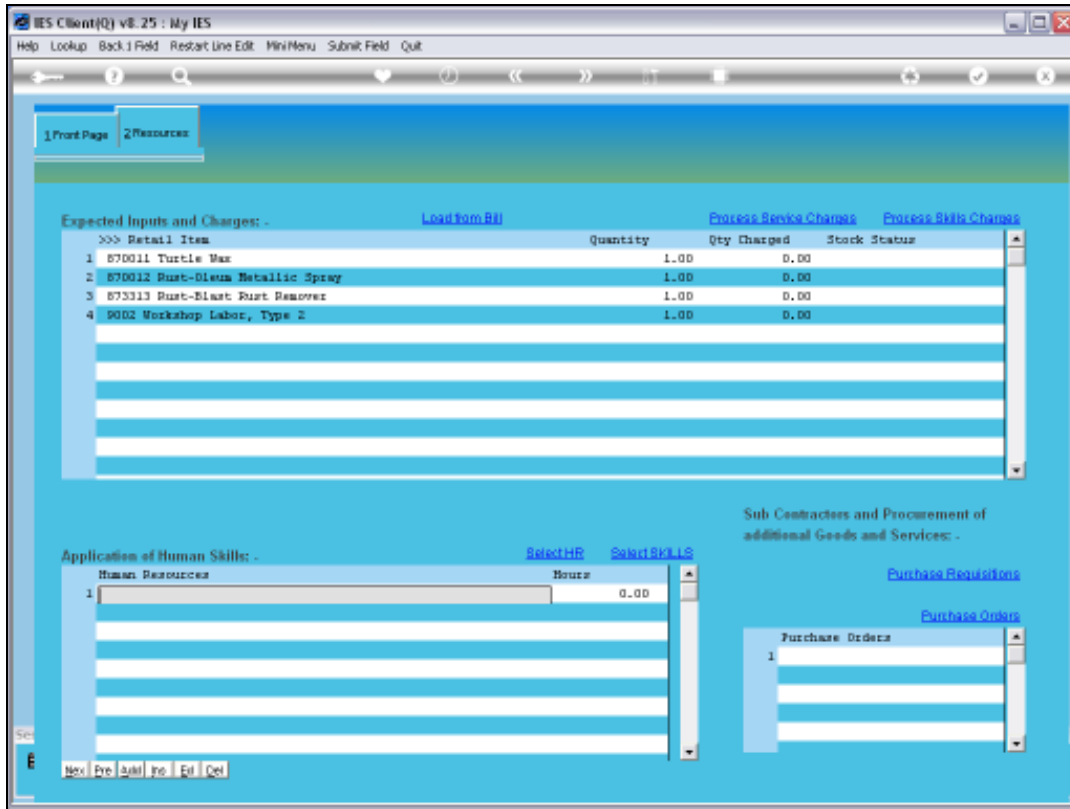
## Slide 1

Slide notes: In this tutorial we look at the available options for assigning Human Resource skills to a Planned Maintenance Event. We choose the RESOURCES tab at the top of the Event screen.

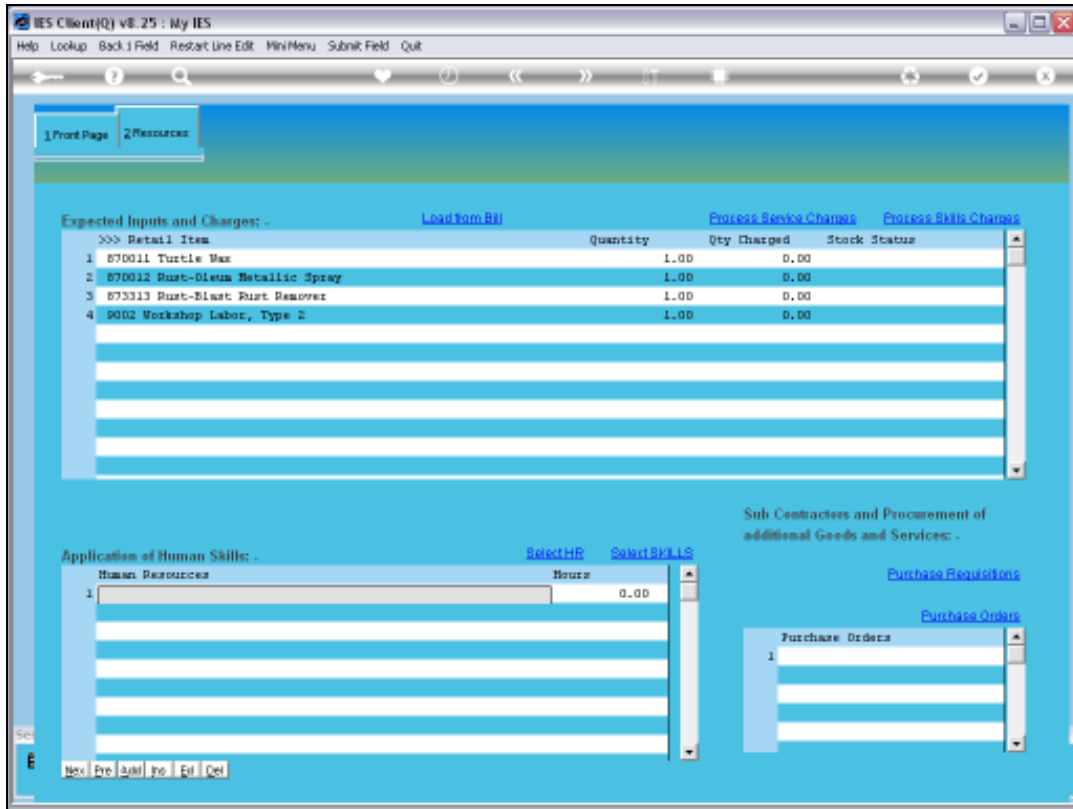


Slide 2

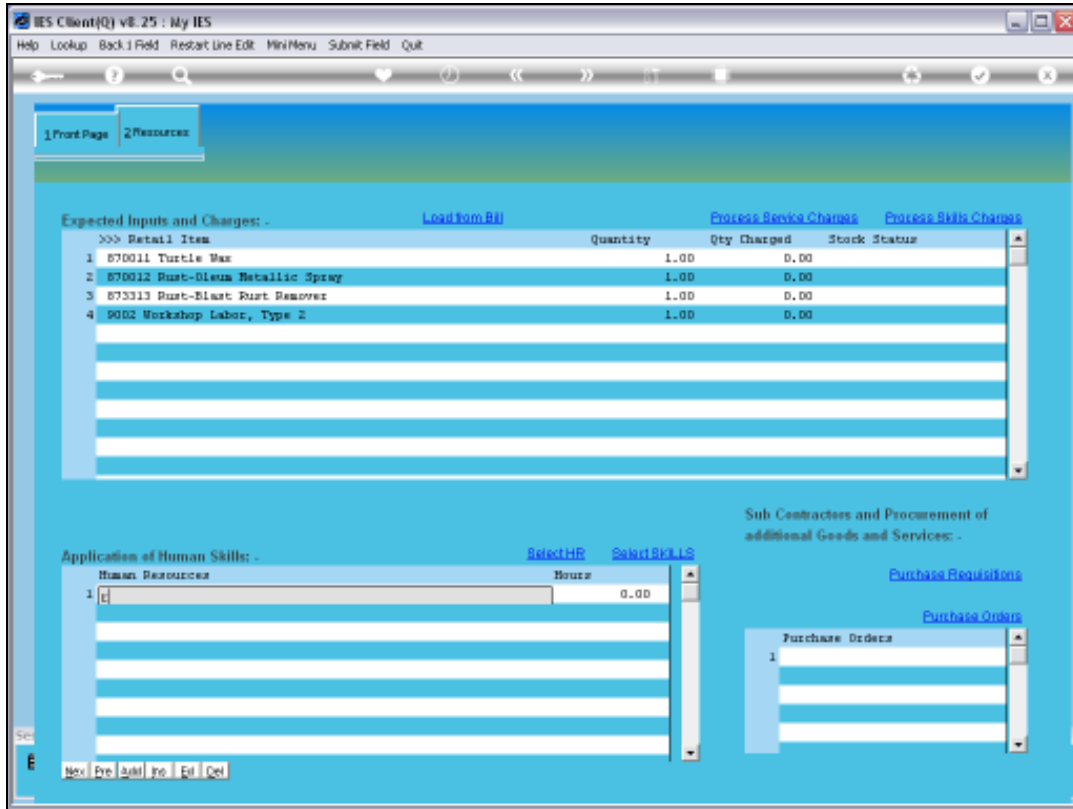
Slide notes: On the Human Resources grid, we can manually add Human Resource persons from the usual lookup methods.



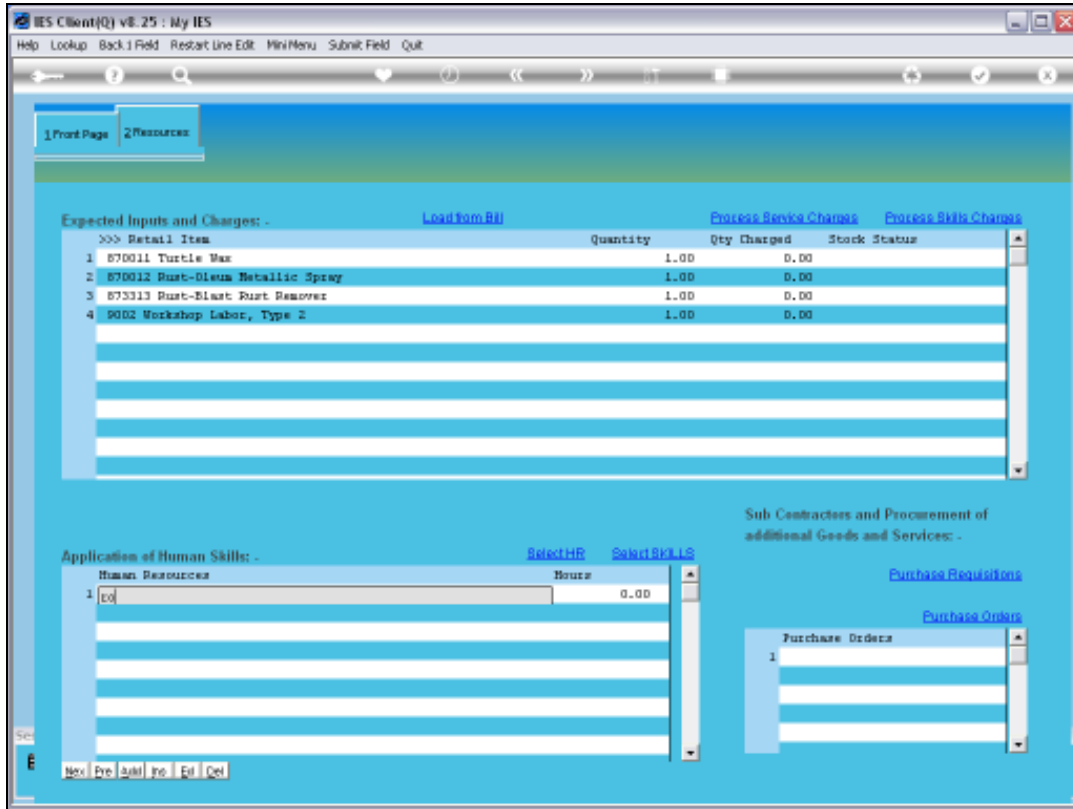
Slide 3  
Slide notes:



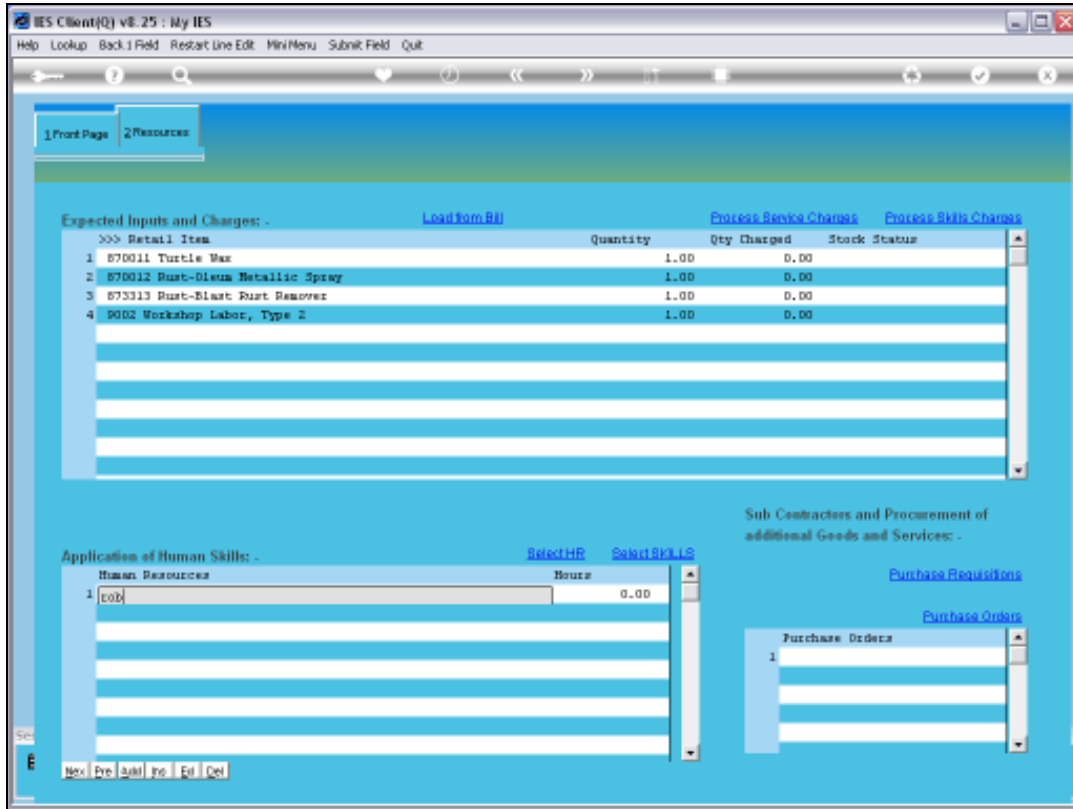
Slide 4  
Slide notes:



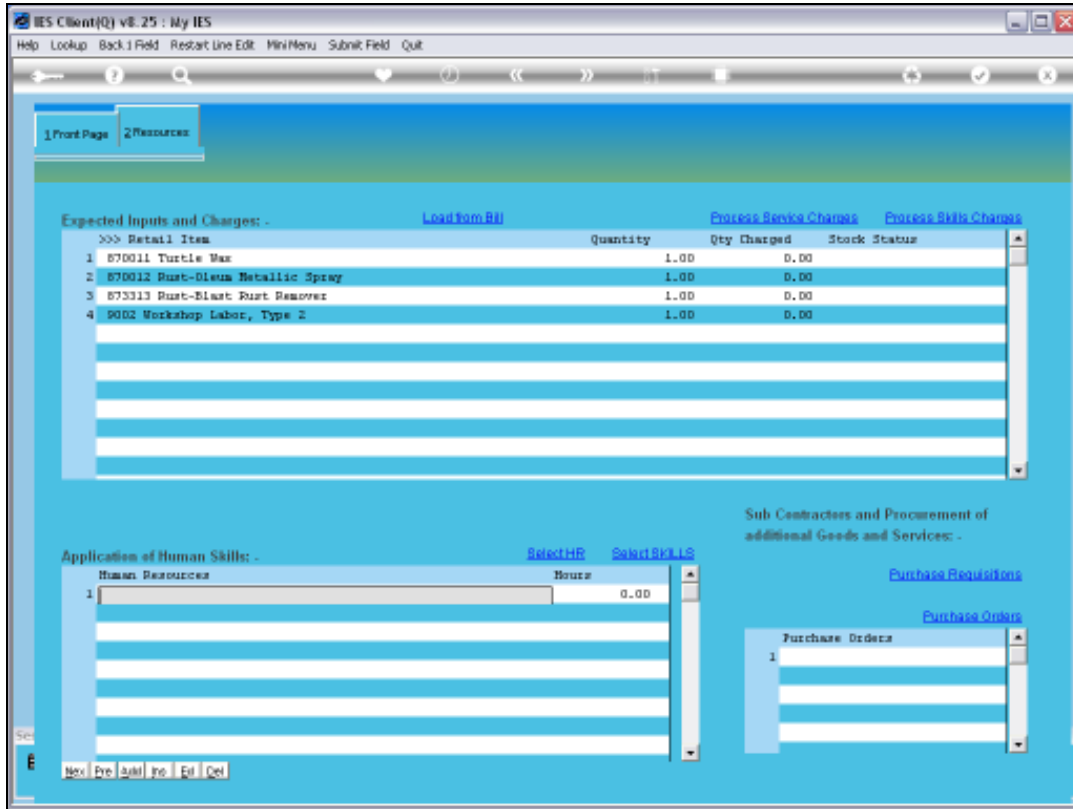
Slide 5  
Slide notes:



Slide 6  
Slide notes:

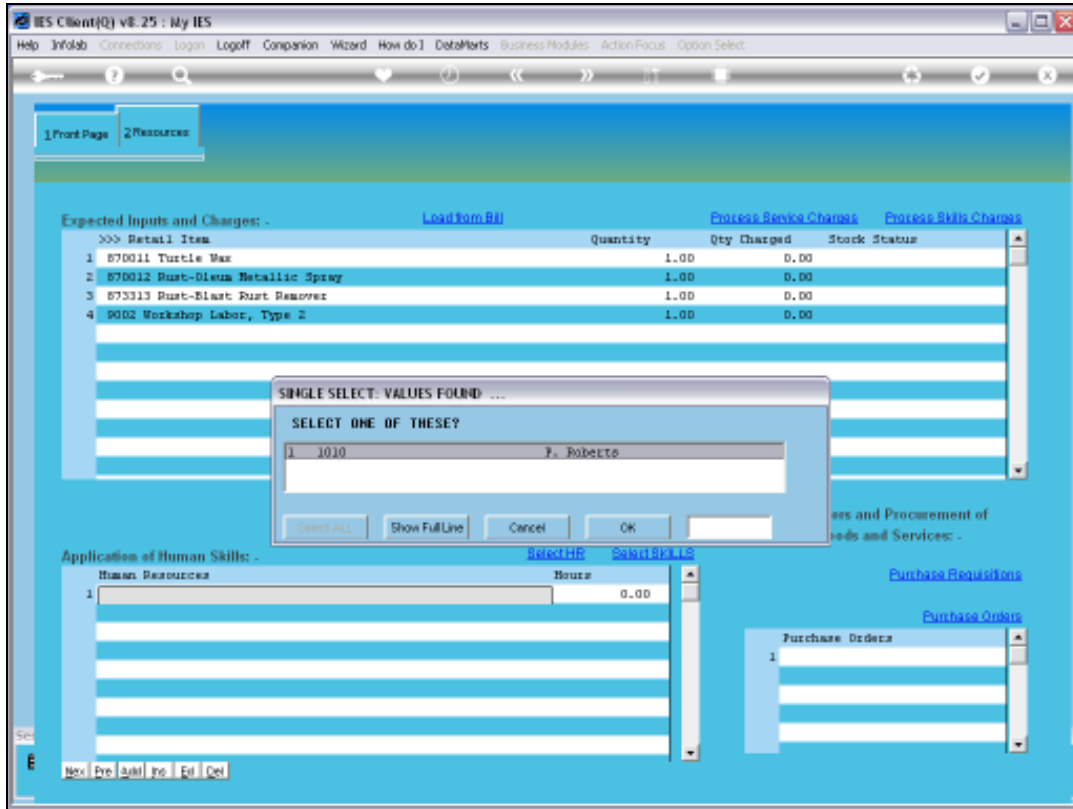


Slide 7  
Slide notes:

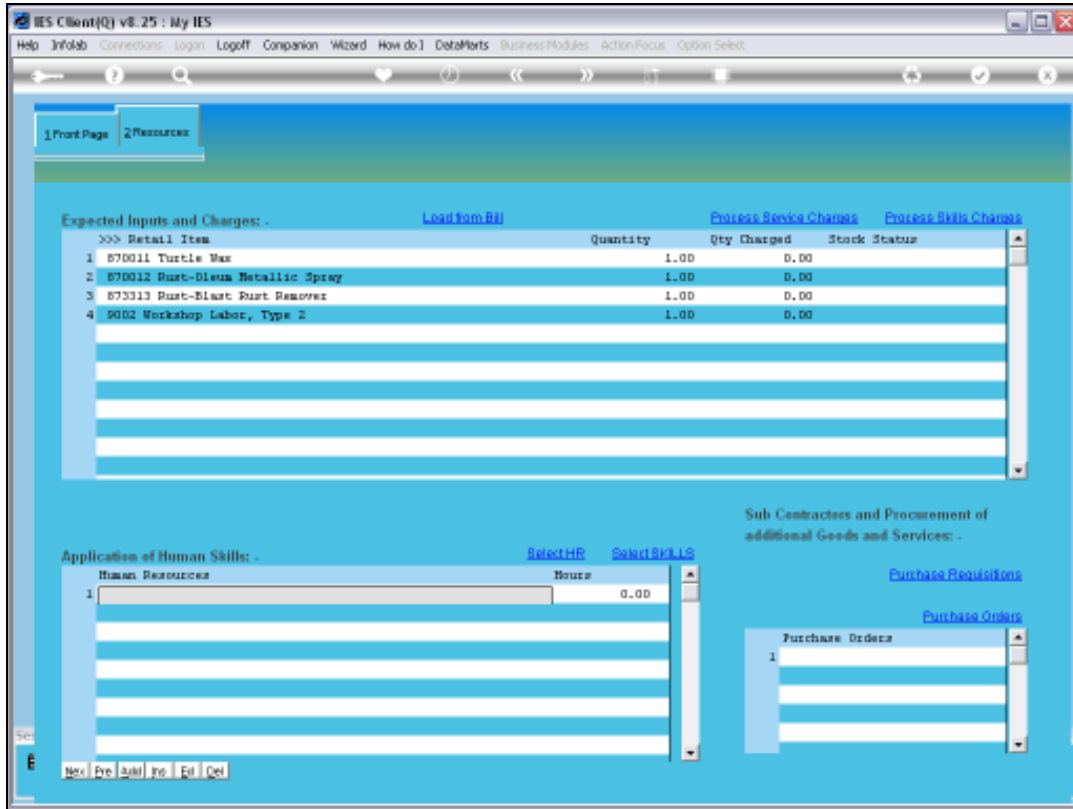


Slide 8  
Slide notes:

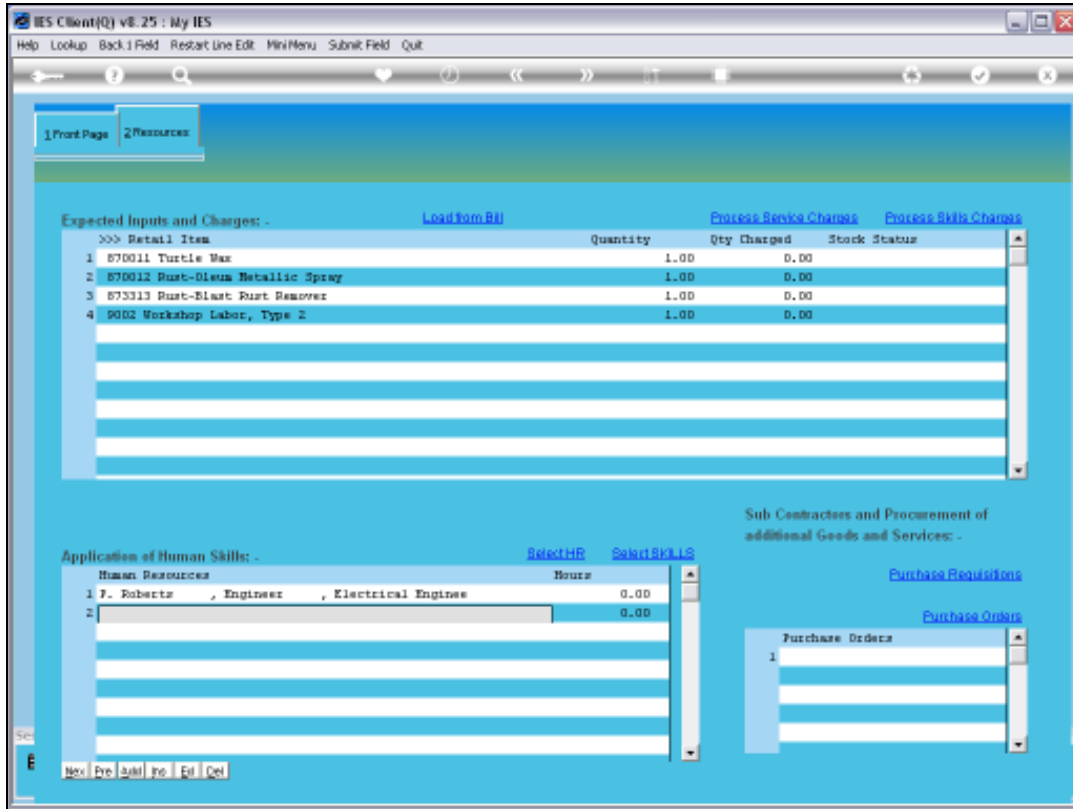




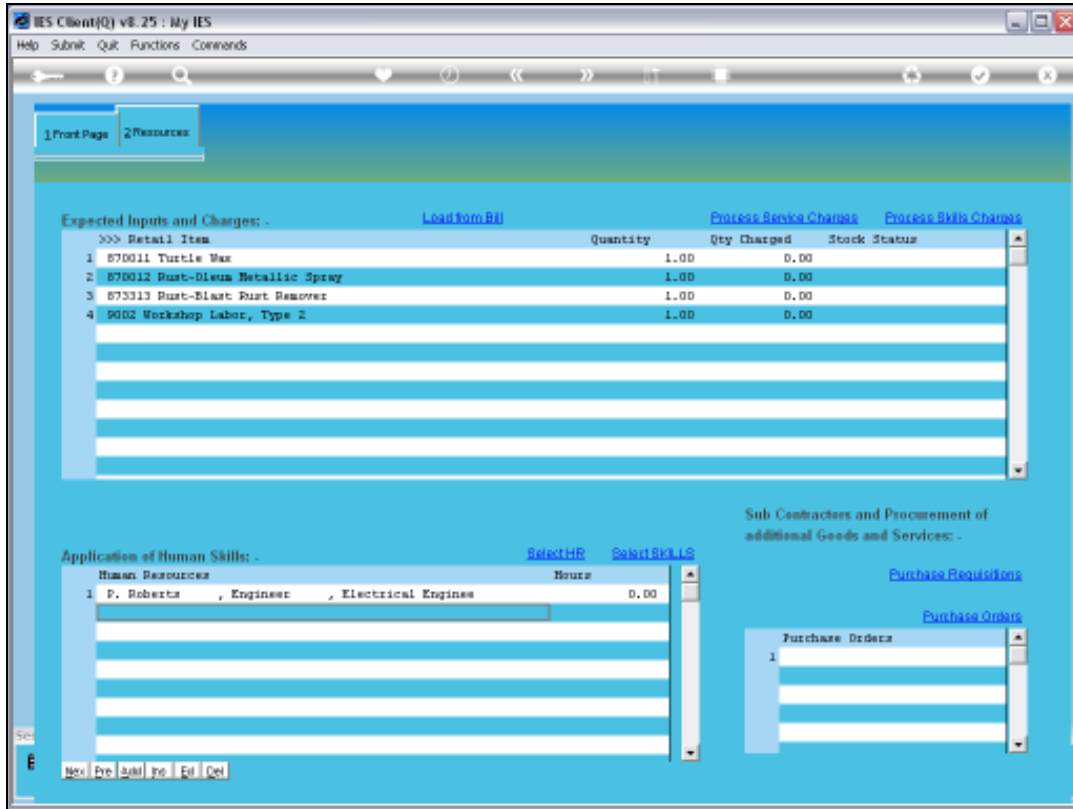
Slide 9  
Slide notes:



Slide 10  
Slide notes:

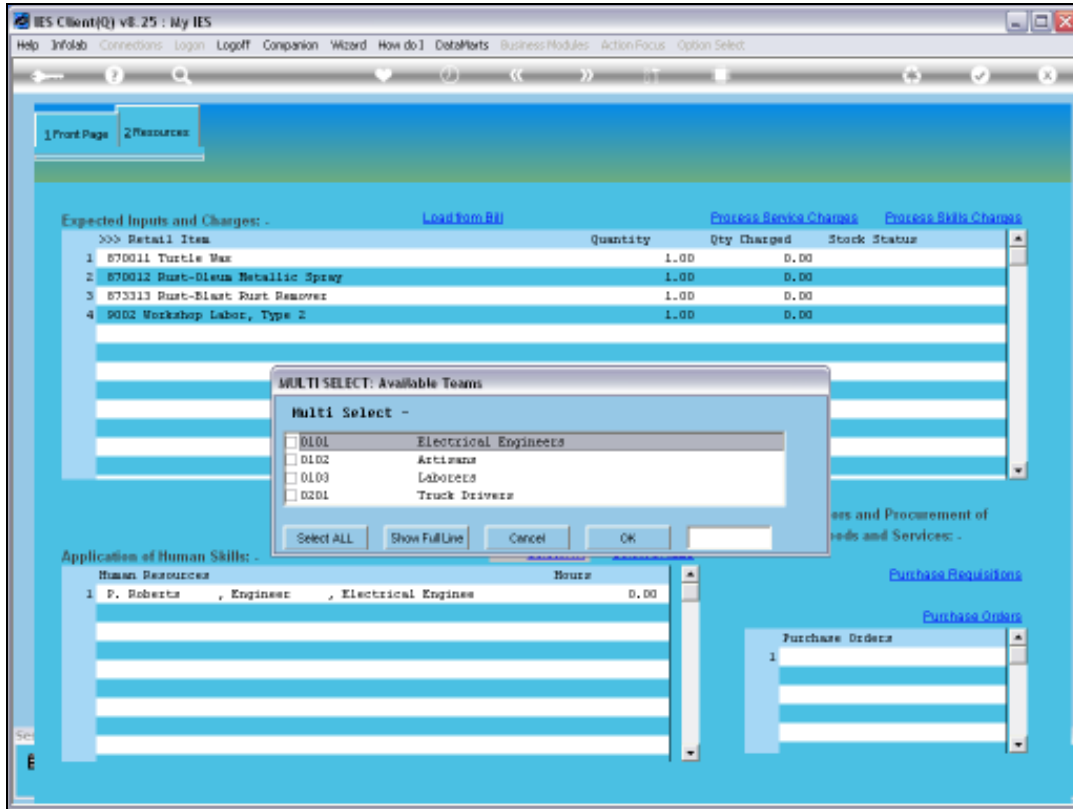


Slide 11  
Slide notes:



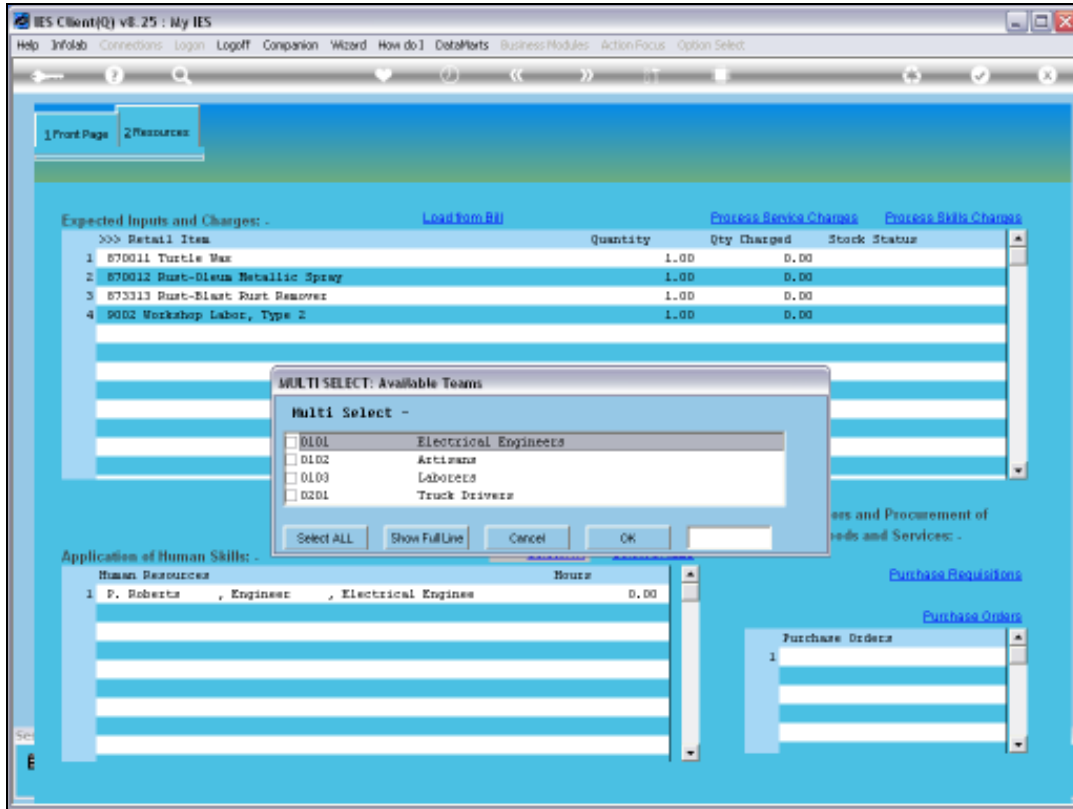
Slide 12

Slide notes: We can also use the 'Select HR' function to select any number of Resource Persons from the available Teams.

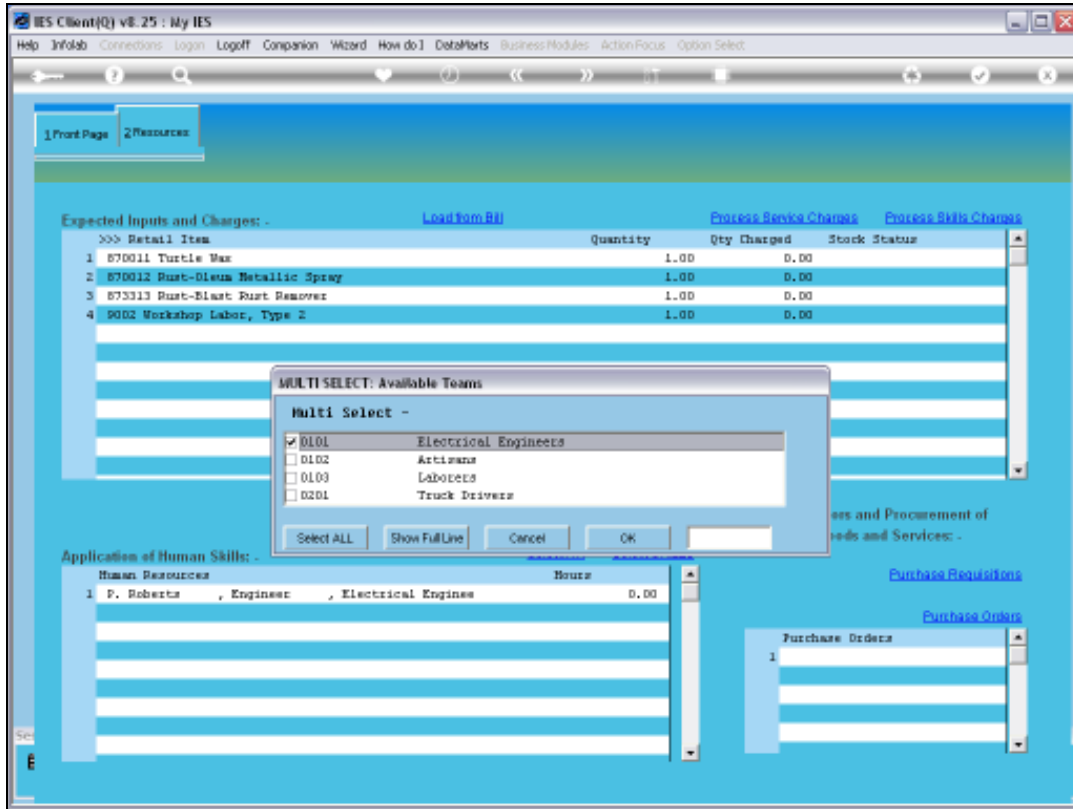


Slide 13

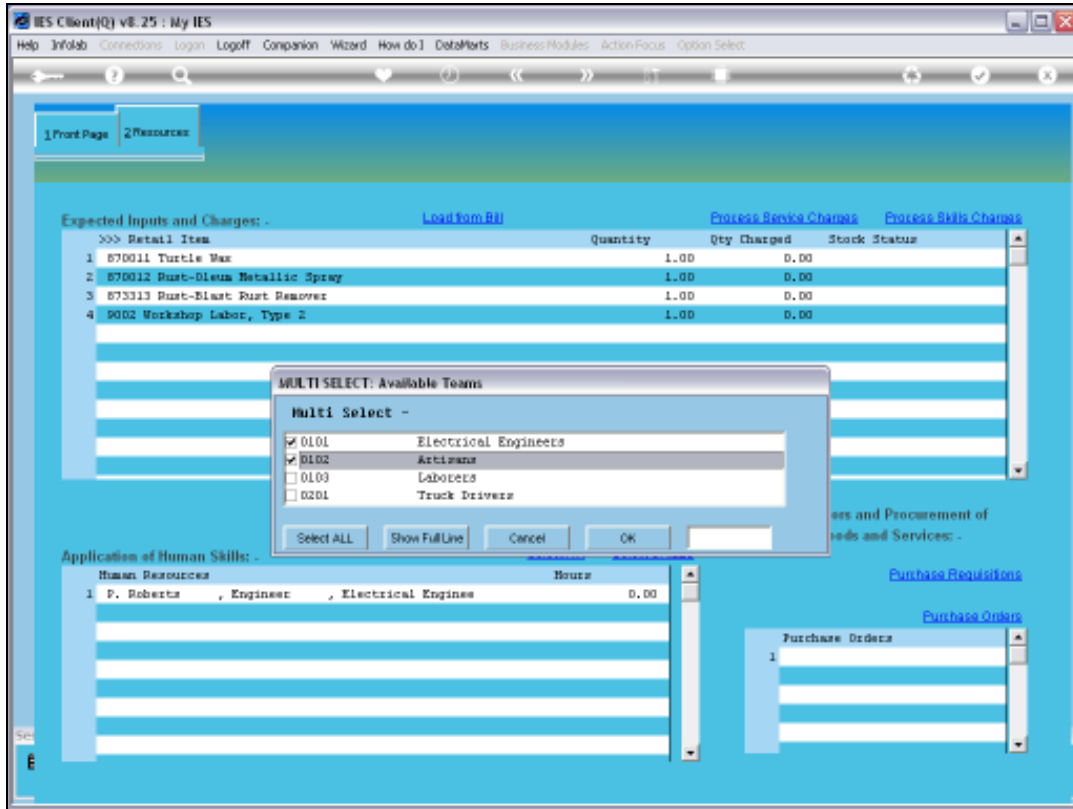
Slide notes: First, we choose which Teams to include in the search for Resources.



Slide 14  
Slide notes:

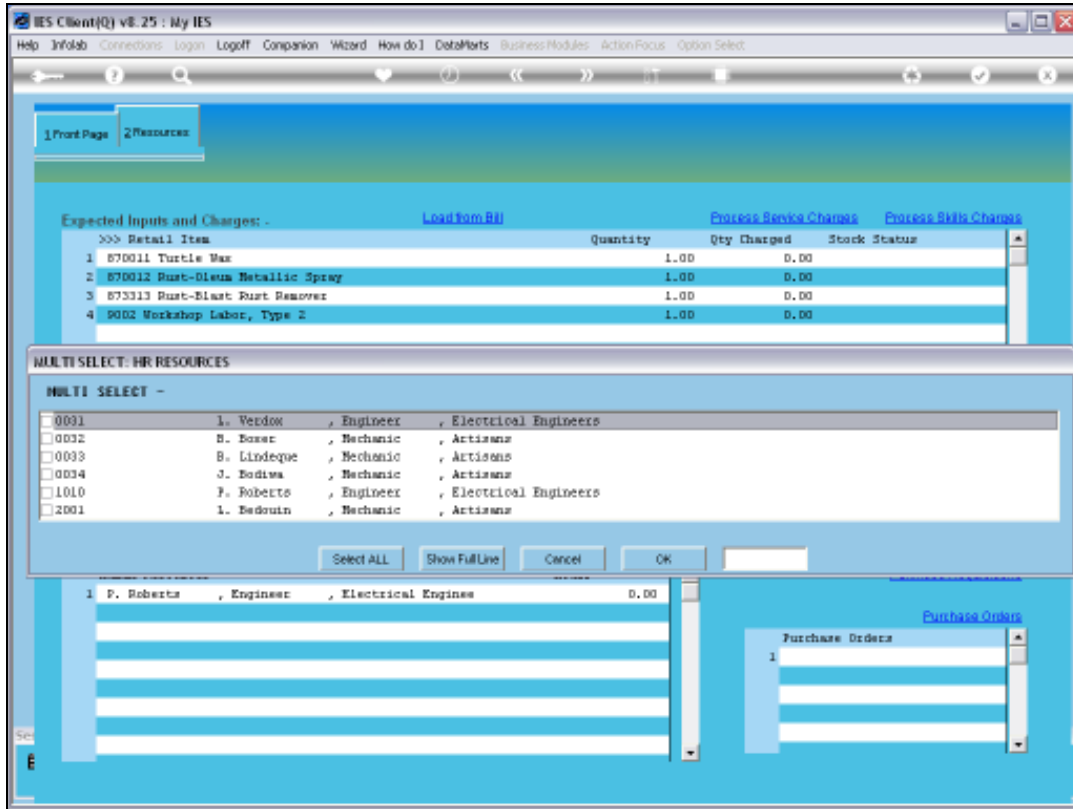


Slide 15  
Slide notes:



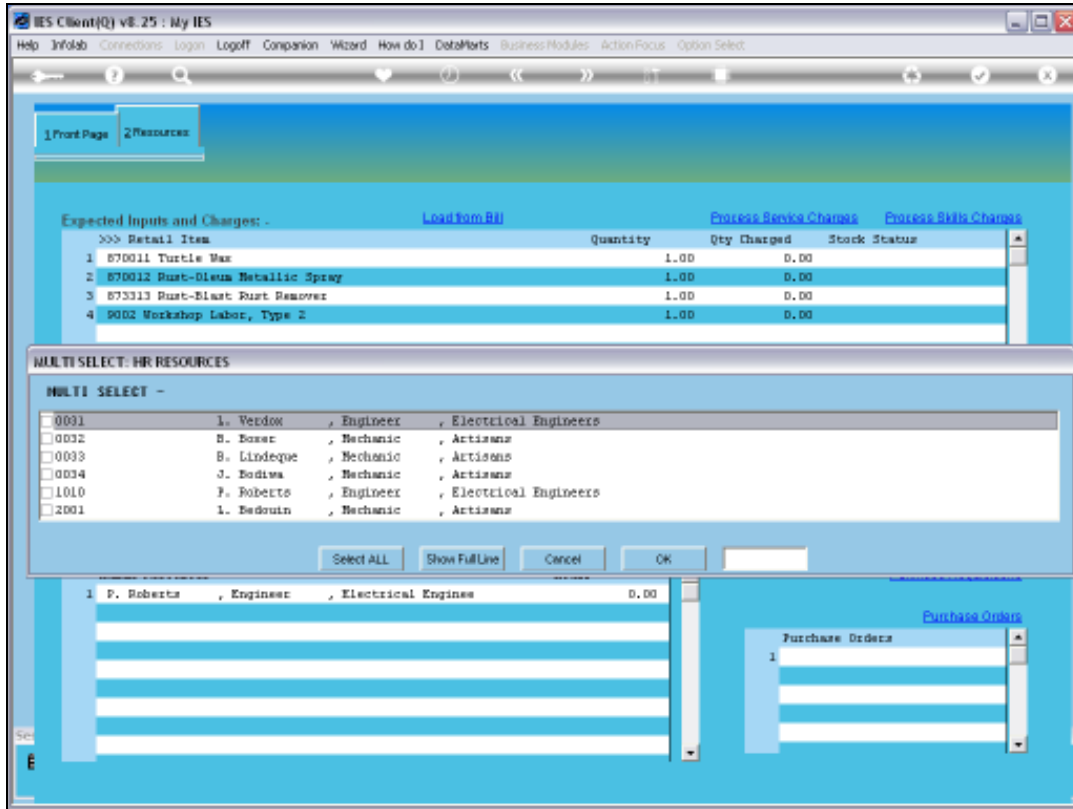
Slide 16  
Slide notes:





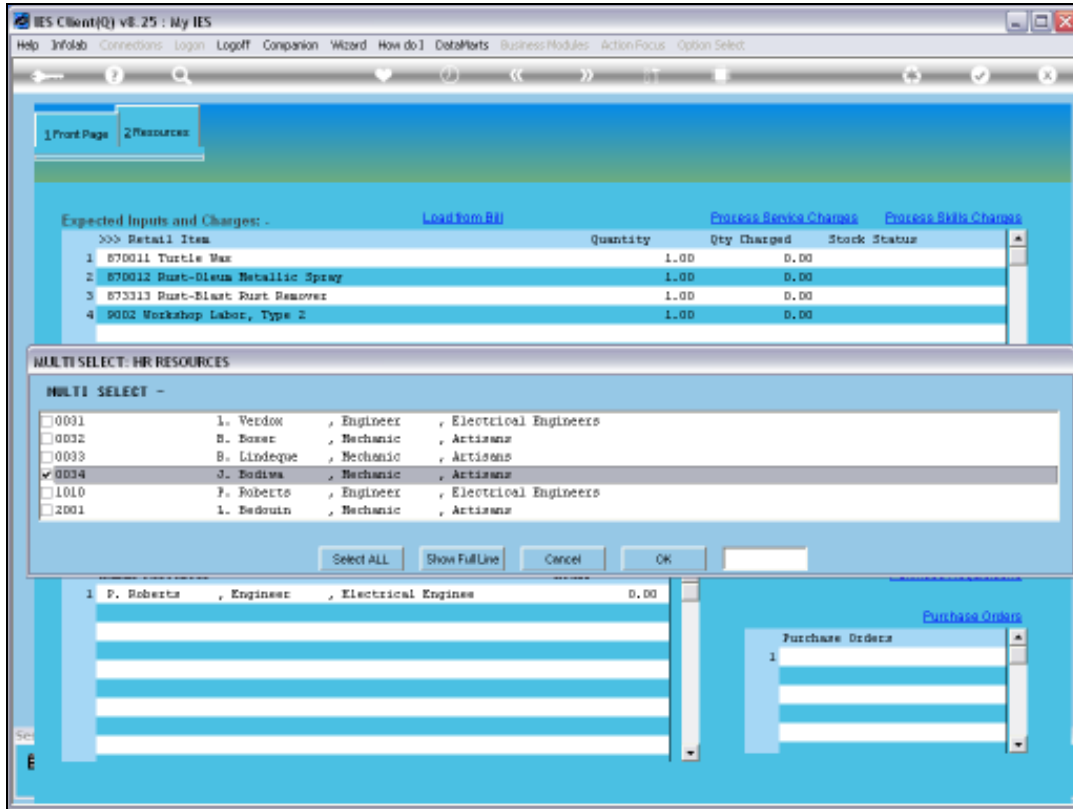
Slide 17

Slide notes: From the selected Teams, the list will be offered inclusive of Resource Persons found on these Teams.

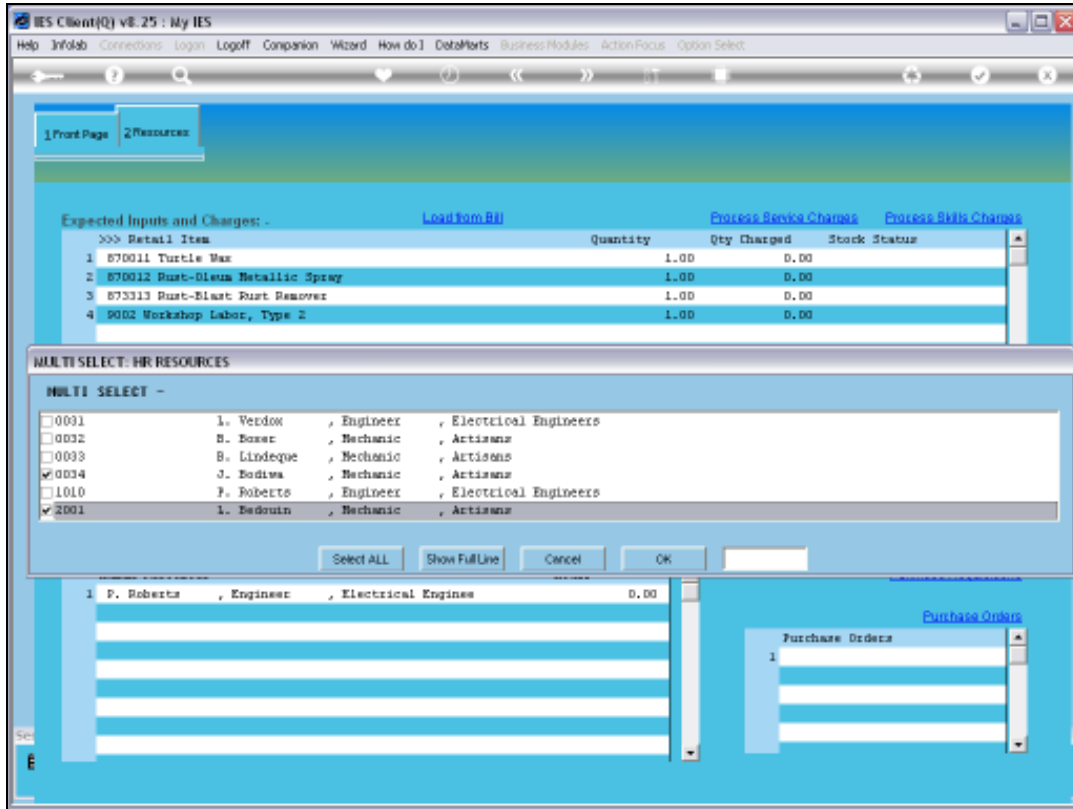


Slide 18

Slide notes:

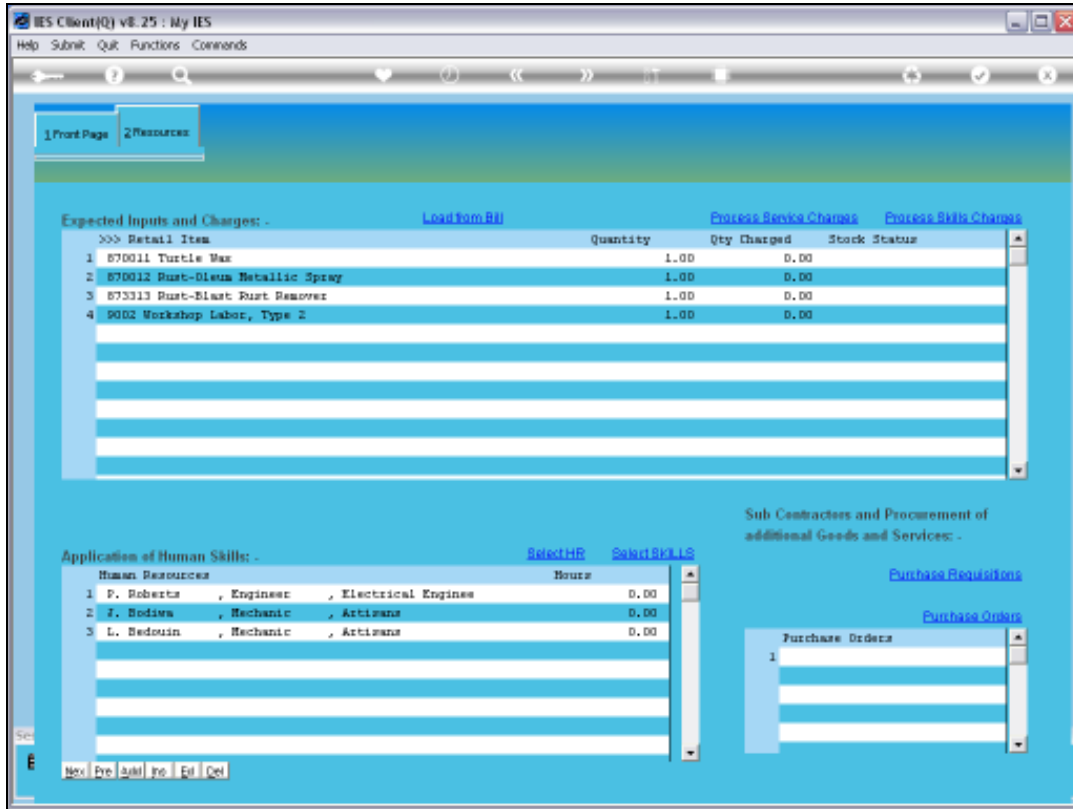


Slide 19  
Slide notes:

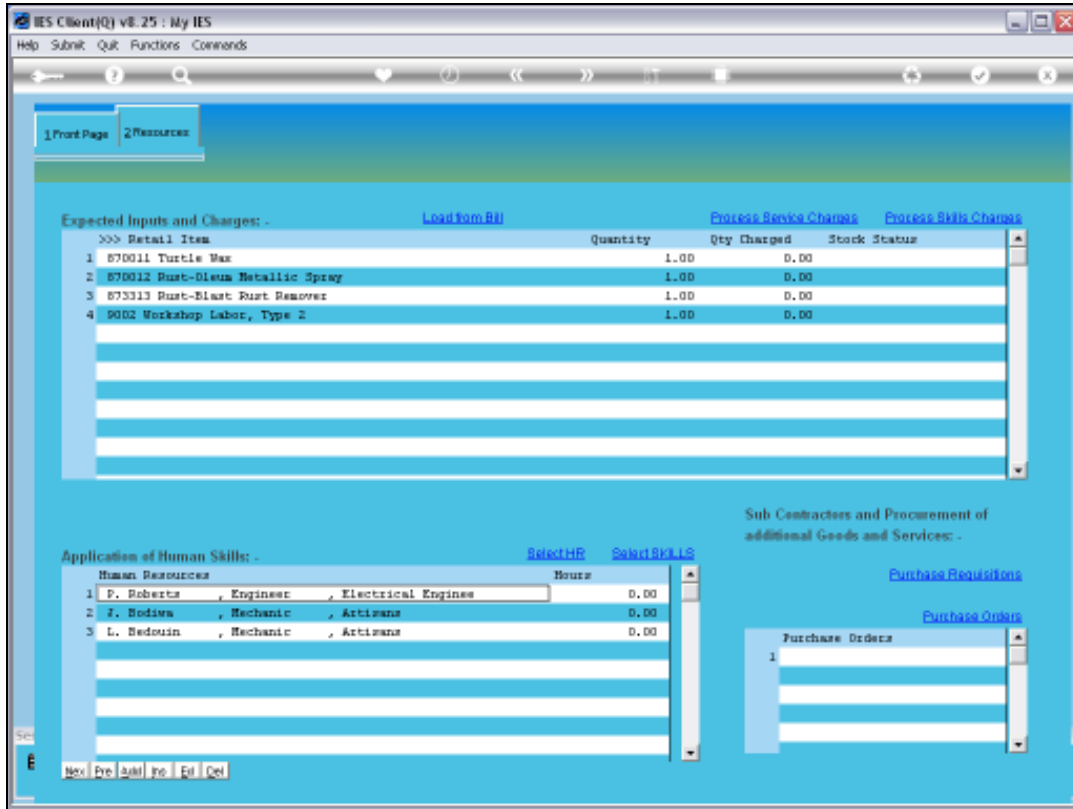


Slide 20

Slide notes: Any selected Members will be included on the Maintenance Event.

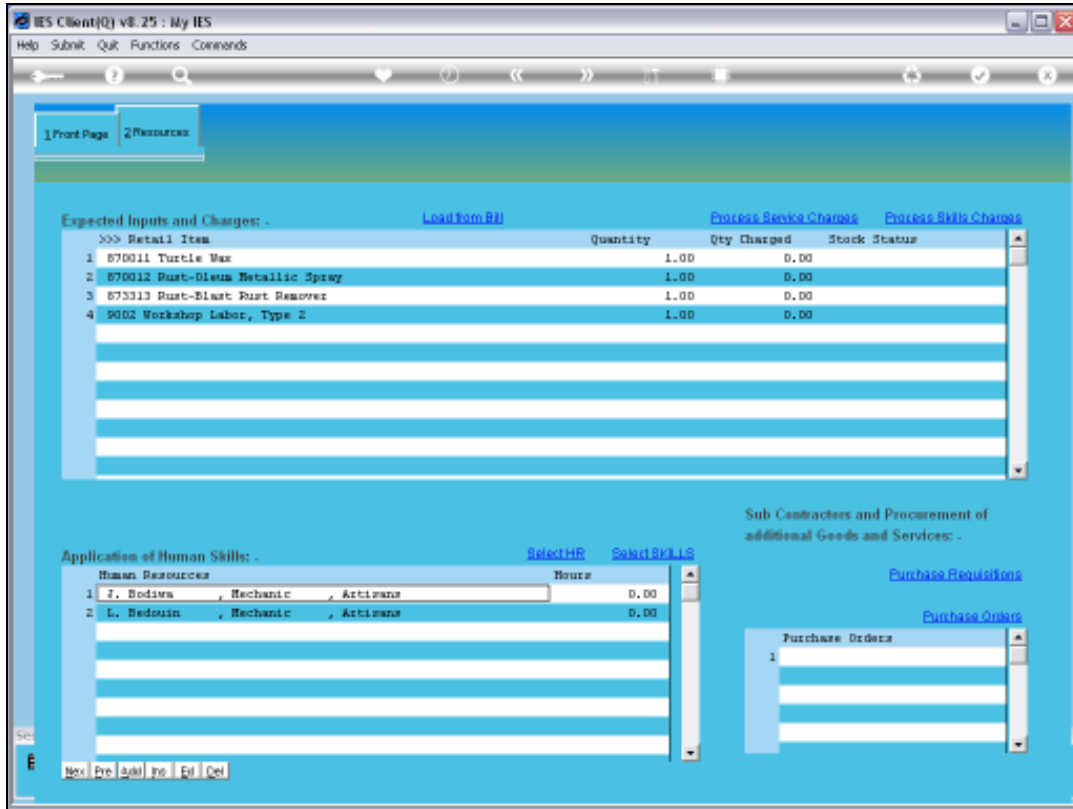


Slide 21  
Slide notes:

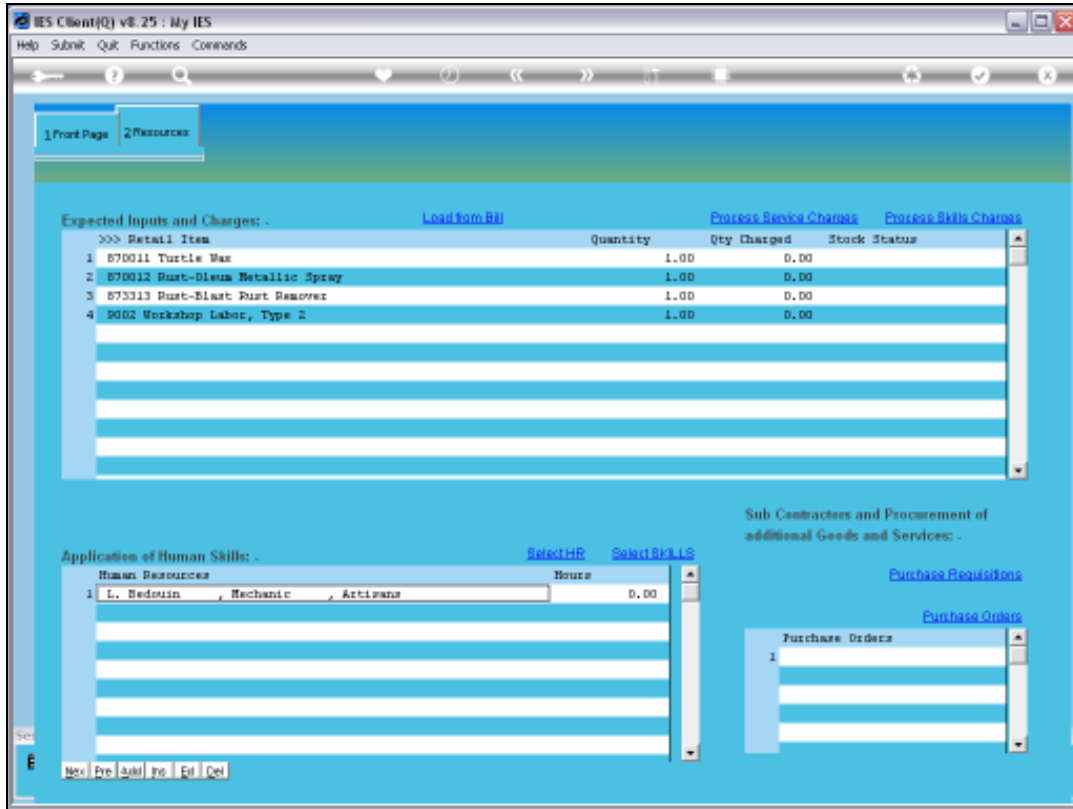


Slide 22

Slide notes: So, we now have a number of resources selected for this Event. Before we look at the Skills Selection option, let's remove the current selection of Resource Persons.



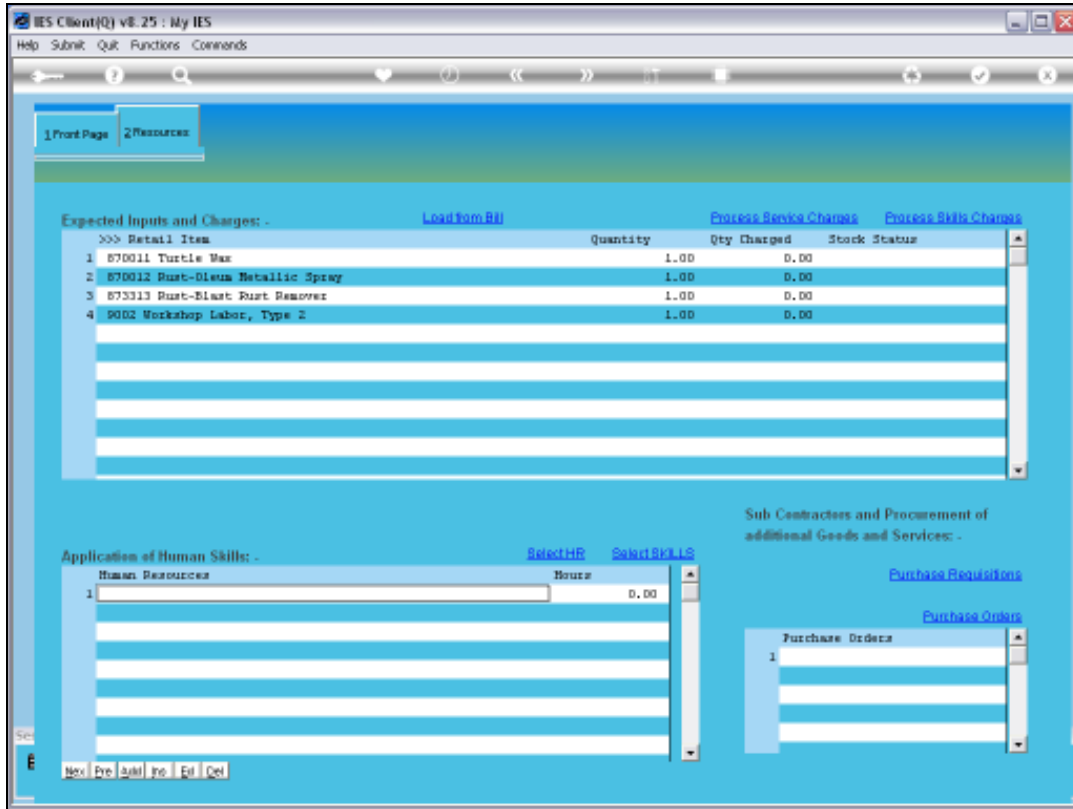
Slide 23  
 Slide notes:



Slide 24

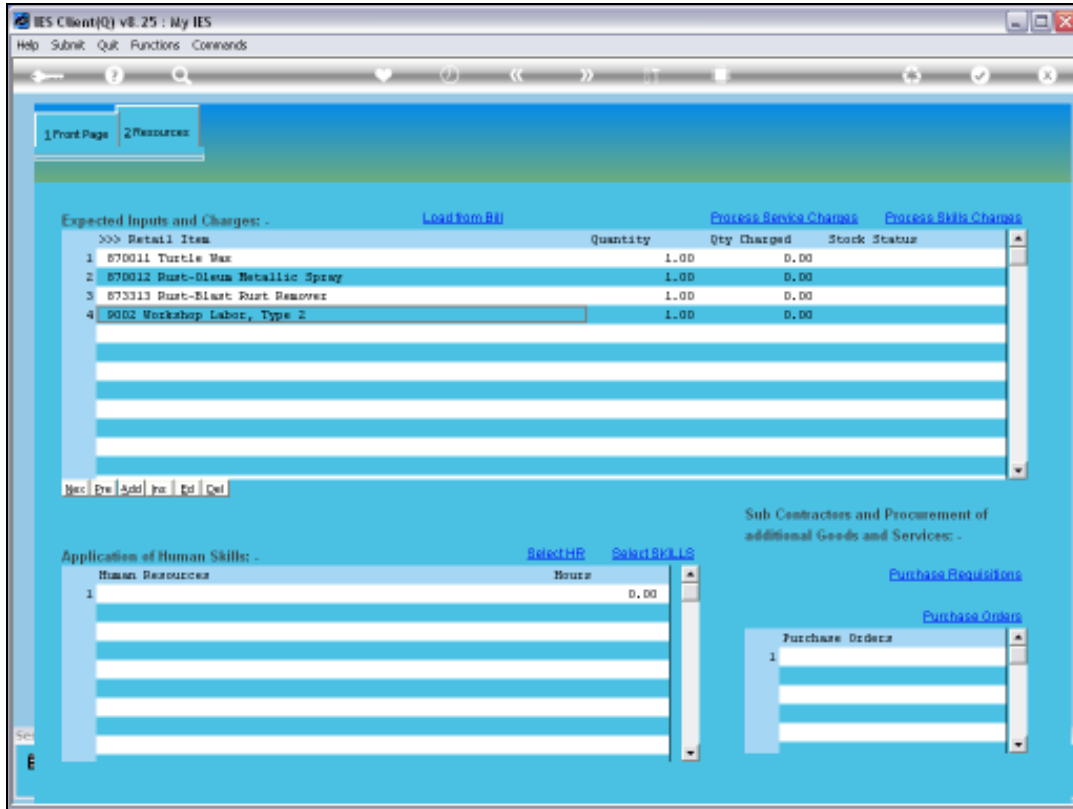
Slide notes:





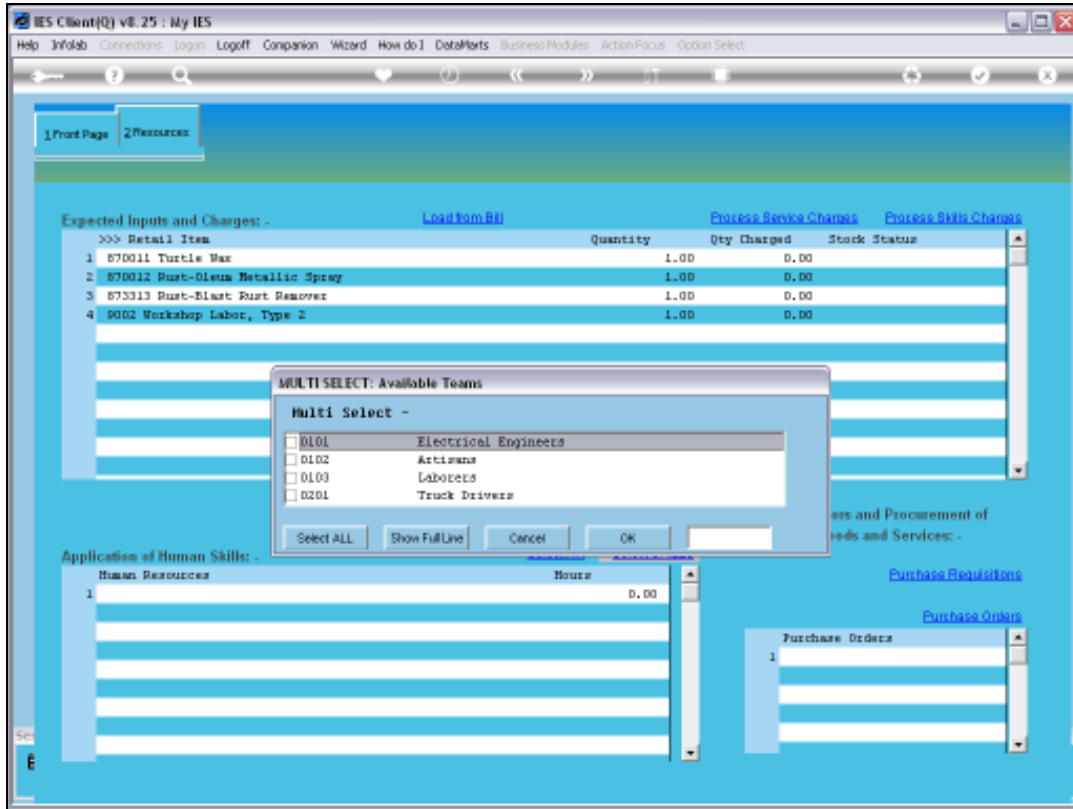
Slide 25

Slide notes: We may note that on our Resource Requirements we have 1 Labor Skills item listed.



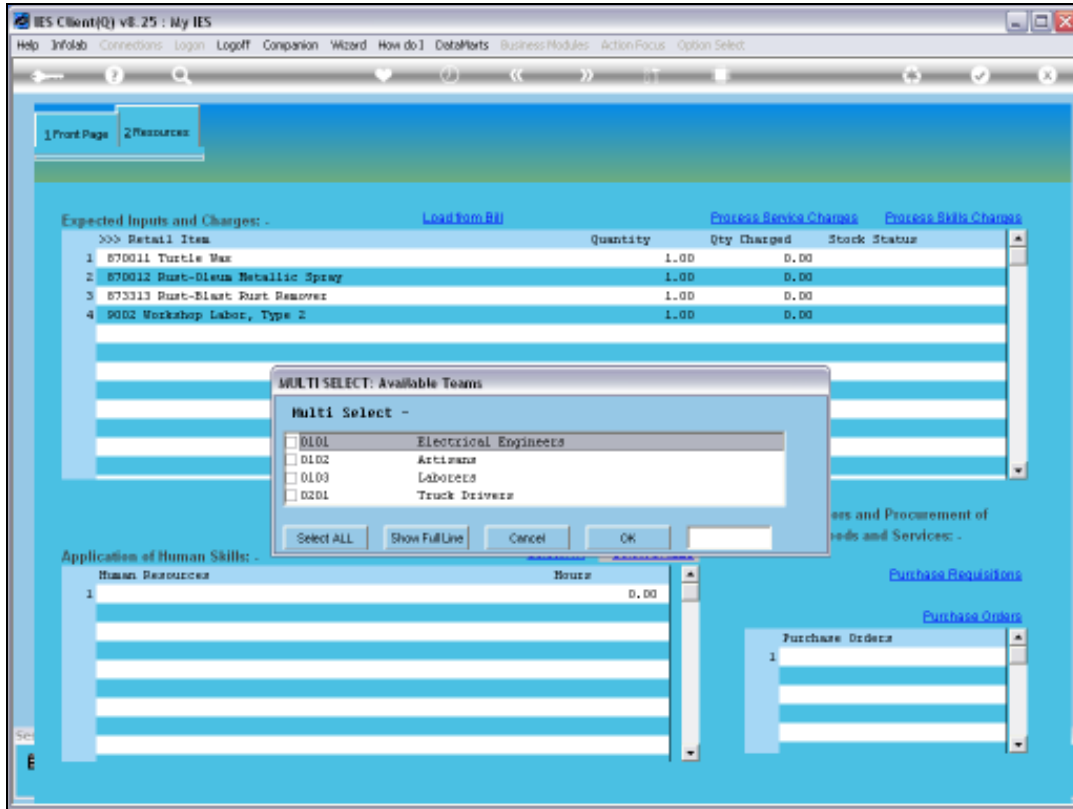
Slide 26

Slide notes: When we use the 'Select Skills' function, the system will check the Resource requirements listed above, and will offer only Skills that match what is needed.

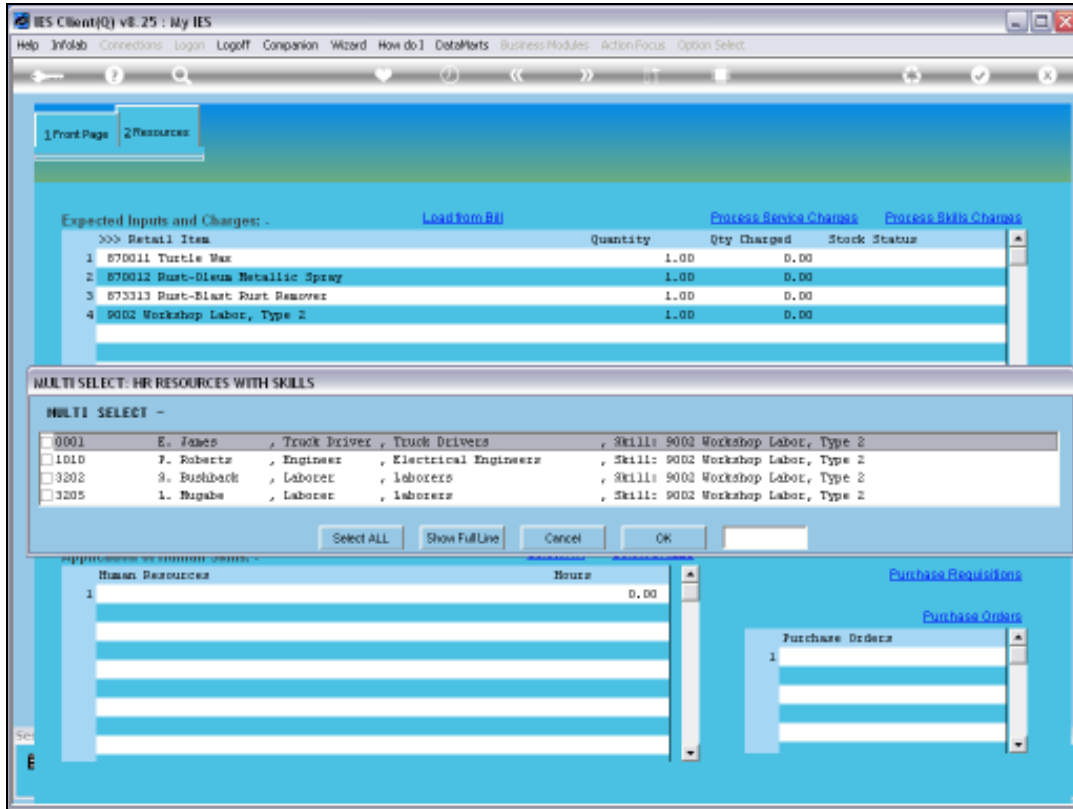


Slide 27

Slide notes: Once again, we can choose which teams may be checked for the required Skills.

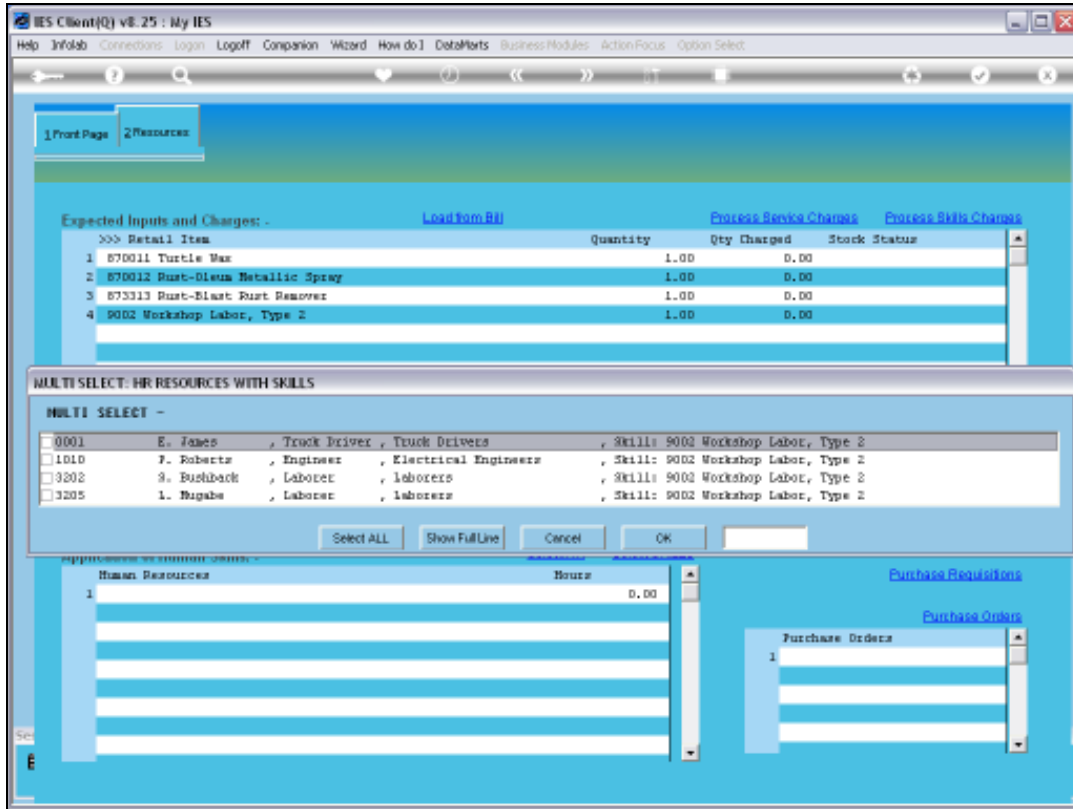


Slide 28  
Slide notes:

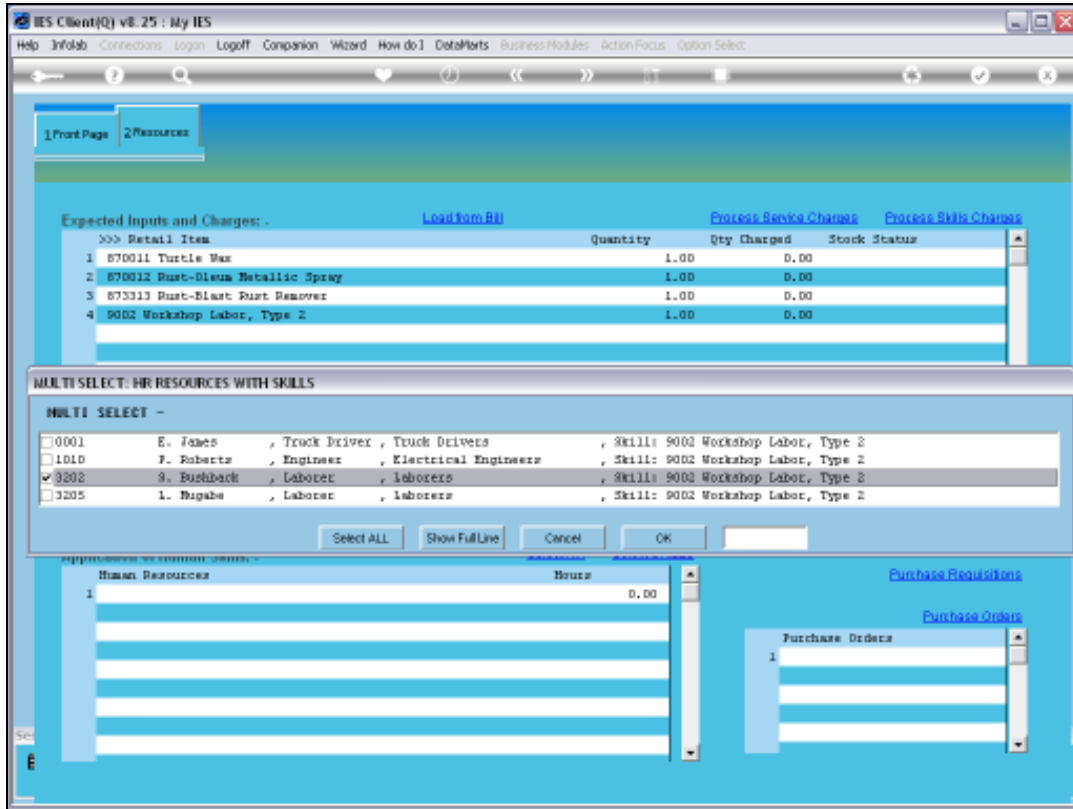


Slide 29

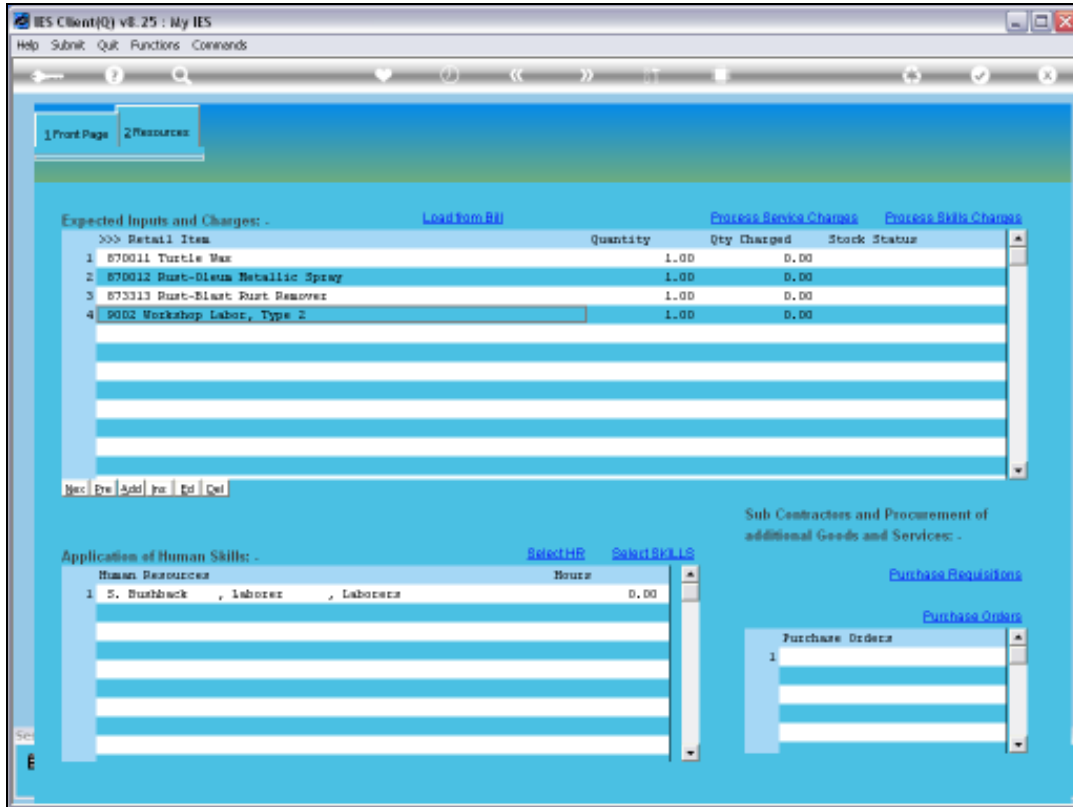
Slide notes: Now all of the options that are offered have a match for the required Skills.



Slide 30  
Slide notes:



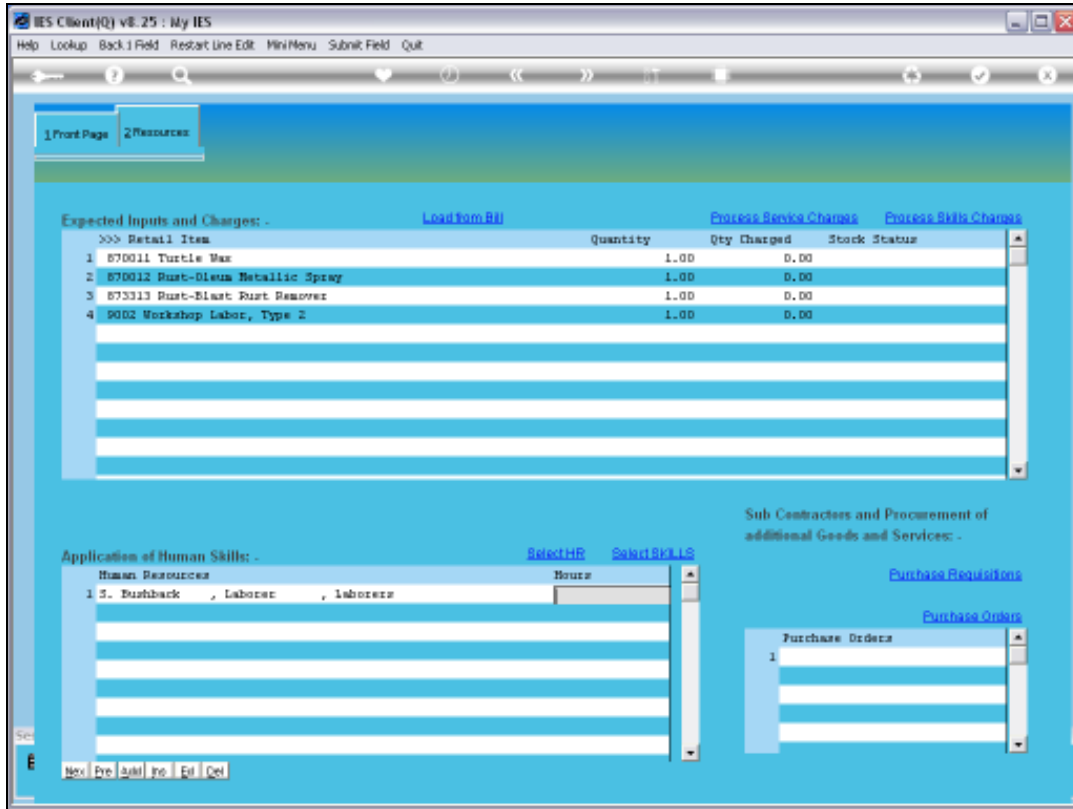
Slide 31  
Slide notes:



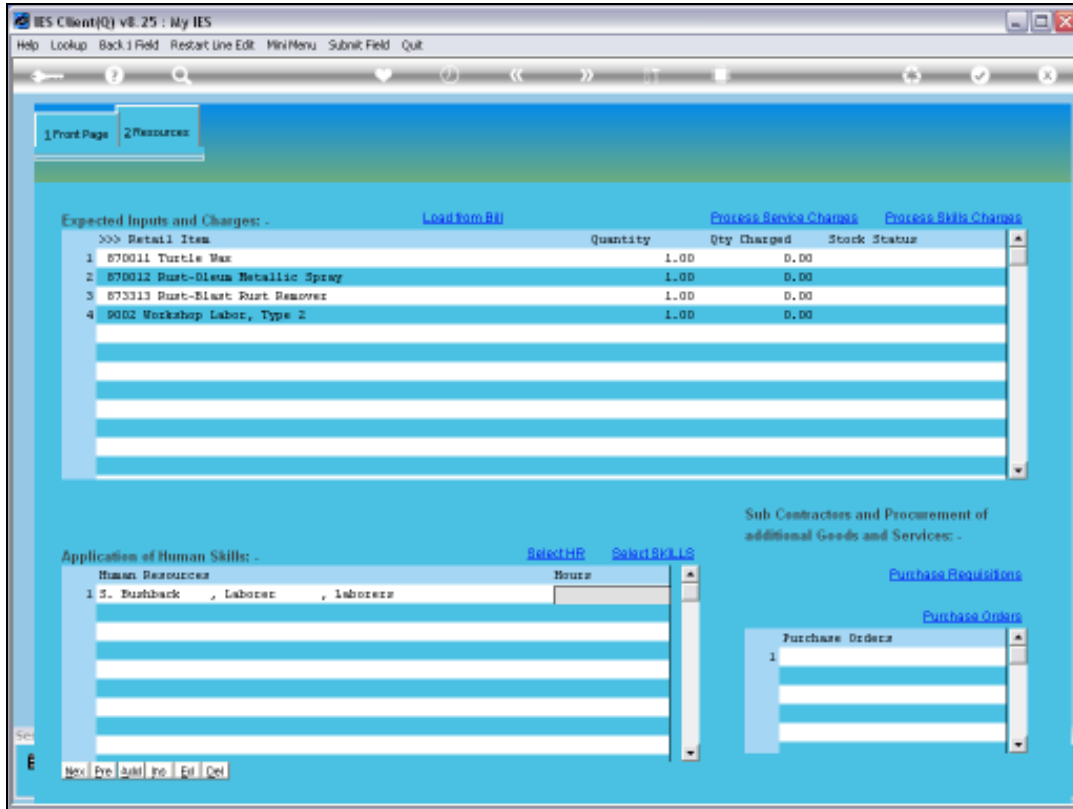
Slide 32

Slide notes: It is optional whether to indicate how many hours to book the Resource Person for. In fact, it is optional whether to indicate Resource Persons at all, but we have now seen the available options for including Resource Persons.

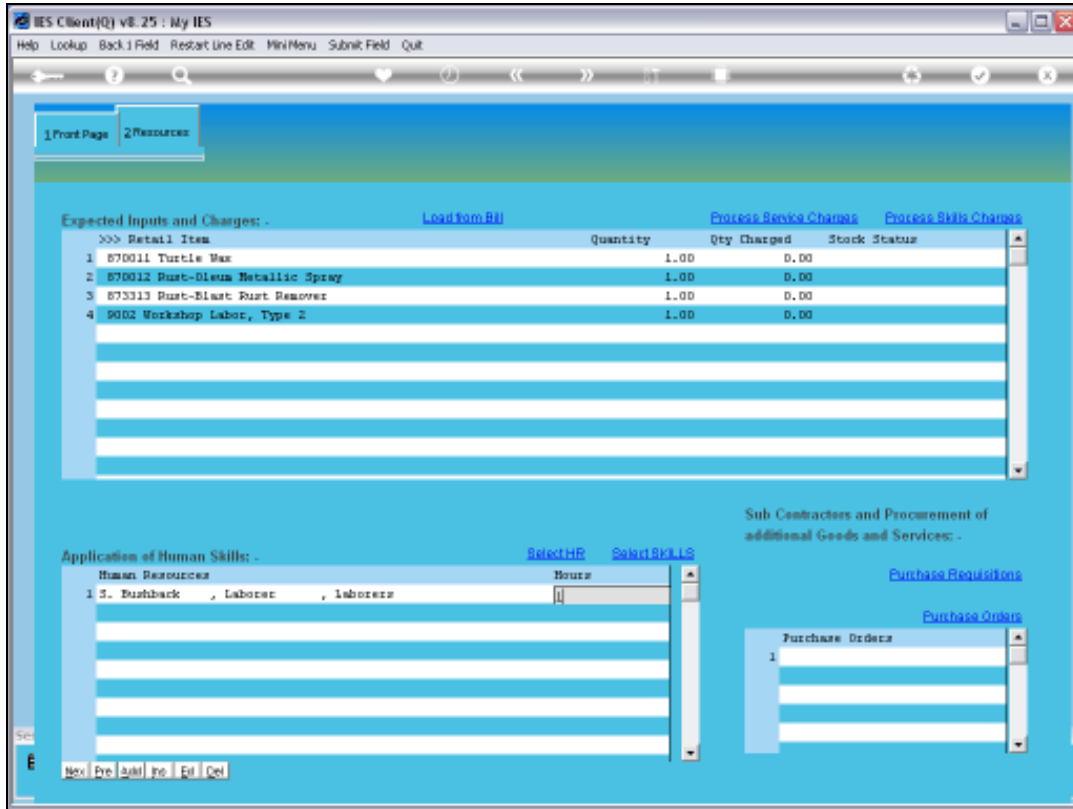




Slide 33  
Slide notes:

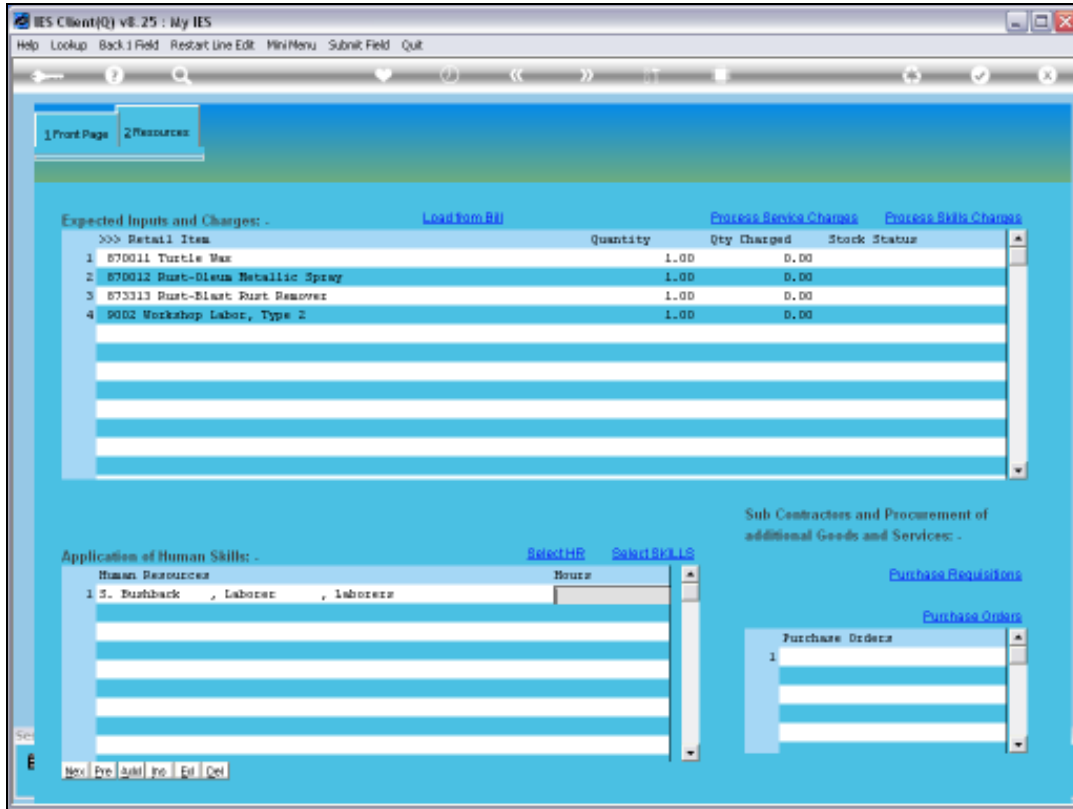


Slide 34  
Slide notes:



Slide 35

Slide notes:



Slide 36

Slide notes:

**Maintenance Event Dashboard**

Sort By: [Work Order](#) | [Start Date](#) | [Remove Start Dates](#)

Actions: [Select Start Dates](#) | [Remove Start Dates](#) | [Remove HR](#)

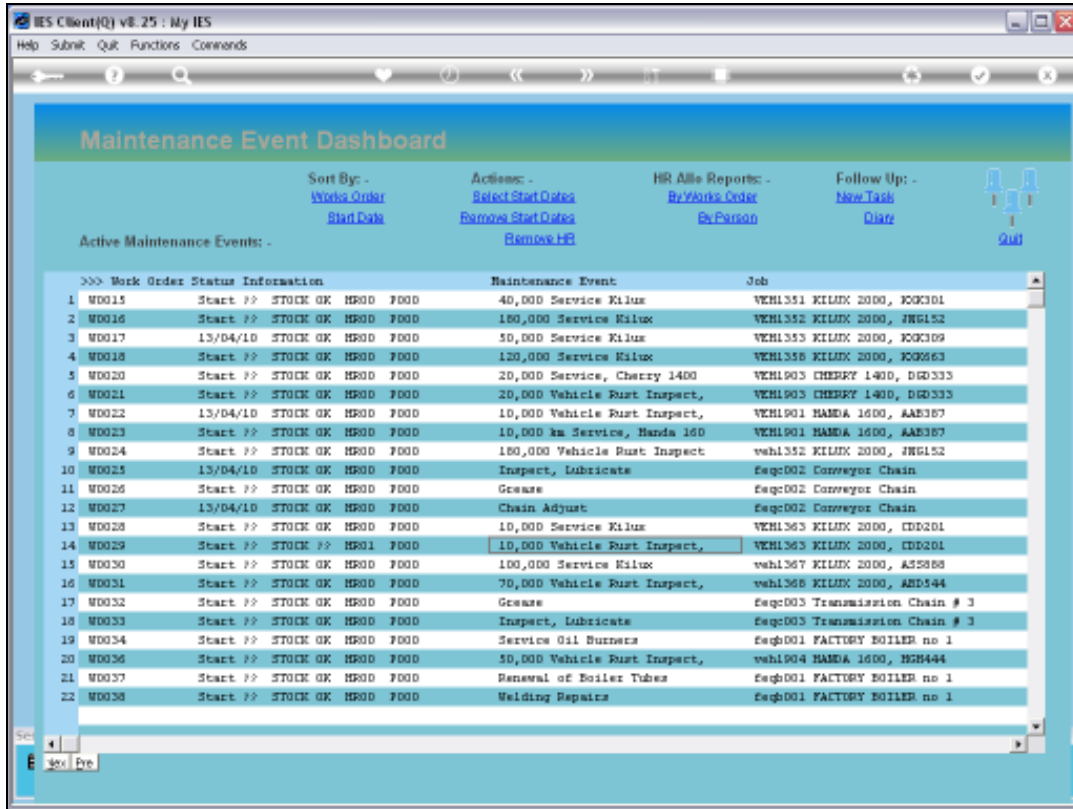
HR All Reports: [By Work Order](#) | [By Person](#)

Follow Up: [New Task](#) | [Diary](#)

Active Maintenance Events: -

Work Order	Status	Info	Maintenance Event	Job
1	Start	W0015	40,000 Service Kilux	VEH1351 KILUX 2000, K0K301
2	Start	W0016	160,000 Service Kilux	VEH1352 KILUX 2000, JRG152
3	Start	W0017	50,000 Service Kilux	VEH1353 KILUX 2000, K0K309
4	Start	W0018	120,000 Service Kilux	VEH1356 KILUX 2000, K0M663
5	Start	W0020	20,000 Service, Cherry 1400	VEH1903 CHERRY 1400, DGD333
6	Start	W0021	20,000 Vehicle Rust Inspect,	VEH1903 CHERRY 1400, DGD333
7	Start	W0022	10,000 Vehicle Rust Inspect,	VEH1901 HANDA 1600, AAE387
8	Start	W0023	10,000 km Service, Handa 160	VEH1901 HANDA 1600, AAE387
9	Start	W0024	160,000 Vehicle Rust Inspect	veh1352 KILUX 2000, JRG152
10	Start	W0025	Inspect, Lubricate	Seq002 Conveyor Chain
11	Start	W0026	Grease	Seq002 Conveyor Chain
12	Start	W0027	Chain Adjust	Seq002 Conveyor Chain
13	Start	W0028	10,000 Service Kilux	VEH1363 KILUX 2000, CDD201
14	Start	W0029	10,000 Vehicle Rust Inspect,	VEH1363 KILUX 2000, CDD201
15	Start	W0030	100,000 Service Kilux	veh1367 KILUX 2000, A35888
16	Start	W0031	70,000 Vehicle Rust Inspect,	veh1368 KILUX 2000, AHD444
17	Start	W0032	Grease	Seq003 Transmission Chain # 3
18	Start	W0033	Inspect, Lubricate	Seq003 Transmission Chain # 3
19	Start	W0034	Service Oil Burners	Seq001 FACTORY BOILER no 1
20	Start	W0036	50,000 Vehicle Rust Inspect,	veh1904 HANDA 1600, H2H444
21	Start	W0037	Renewal of Boiler Tubes	Seq001 FACTORY BOILER no 1
22	Start	W0038	Welding Repairs	Seq001 FACTORY BOILER no 1

Slide 37  
Slide notes:



Slide 38

Slide notes: And we observe that our selection of 1 Resource Person on the event is now shown on the Active Dashboard with the 'HR01' indicator.

Maintenance Event Dashboard

Sort By: - [Work Order](#)  
[Start Date](#)

Actions: - [Select Start Dates](#)  
[Remove Start Dates](#)  
[Remove HR](#)

HR All Reports: - [By Work Order](#)  
[By Person](#)

Follow Up: - [New Task](#)  
[Diary](#)

Active Maintenance Events: - [Quit](#)

Work Order	Status	Work Order Status Information	Maintenance Event	Job
1	Start ??	STOCK GK HP00 F000	40,000 Service Kilux	VEH1351 KILUX 2000, K0K301
2	Start ??	STOCK GK HP00 F000	160,000 Service Kilux	VEH1352 KILUX 2000, JRG152
3	13/04/10	STOCK GK HP00 F000	50,000 Service Kilux	VEH1353 KILUX 2000, K0K309
4	Start ??	STOCK GK HP00 F000	120,000 Service Kilux	VEH1356 KILUX 2000, K0M663
5	Start ??	STOCK GK HP00 F000	20,000 Service, Cherry 1400	VEH1903 CHERRY 1400, DGD333
6	Start ??	STOCK GK HP00 F000	20,000 Vehicle Rust Inspect,	VEH1903 CHERRY 1400, DGD333
7	13/04/10	STOCK GK HP00 F000	10,000 Vehicle Rust Inspect,	VEH1901 HANDA 1600, AAE387
8	Start ??	STOCK GK HP00 F000	10,000 km Service, Handa 160	VEH1901 HANDA 1600, AAE387
9	Start ??	STOCK GK HP00 F000	160,000 Vehicle Rust Inspect	veh1352 KILUX 2000, JRG152
10	13/04/10	STOCK GK HP00 F000	Inspect, Lubricate	Seq002 Conveyor Chain
11	Start ??	STOCK GK HP00 F000	Grease	Seq002 Conveyor Chain
12	13/04/10	STOCK GK HP00 F000	Chain Adjust	Seq002 Conveyor Chain
13	Start ??	STOCK GK HP00 F000	10,000 Service Kilux	VEH1363 KILUX 2000, CDD201
14	Start ??	STOCK ?? HP01 F000	10,000 Vehicle Rust Inspect,	VEH1363 KILUX 2000, CDD201
15	Start ??	STOCK GK HP00 F000	100,000 Service Kilux	veh1367 KILUX 2000, ASS088
16	Start ??	STOCK GK HP00 F000	70,000 Vehicle Rust Inspect,	veh1368 KILUX 2000, ASD444
17	Start ??	STOCK GK HP00 F000	Grease	Seq003 Transmission Chain # 3
18	Start ??	STOCK GK HP00 F000	Inspect, Lubricate	Seq003 Transmission Chain # 3
19	Start ??	STOCK GK HP00 F000	Service Oil Burners	Seq001 FACTORY BOILER no 1
20	Start ??	STOCK GK HP00 F000	50,000 Vehicle Rust Inspect,	veh1904 HANDA 1600, H2H444
21	Start ??	STOCK GK HP00 F000	Renewal of Boiler Tubes	Seq001 FACTORY BOILER no 1
22	Start ??	STOCK GK HP00 F000	Welding Repairs	Seq001 FACTORY BOILER no 1

Slide 39  
Slide notes: