

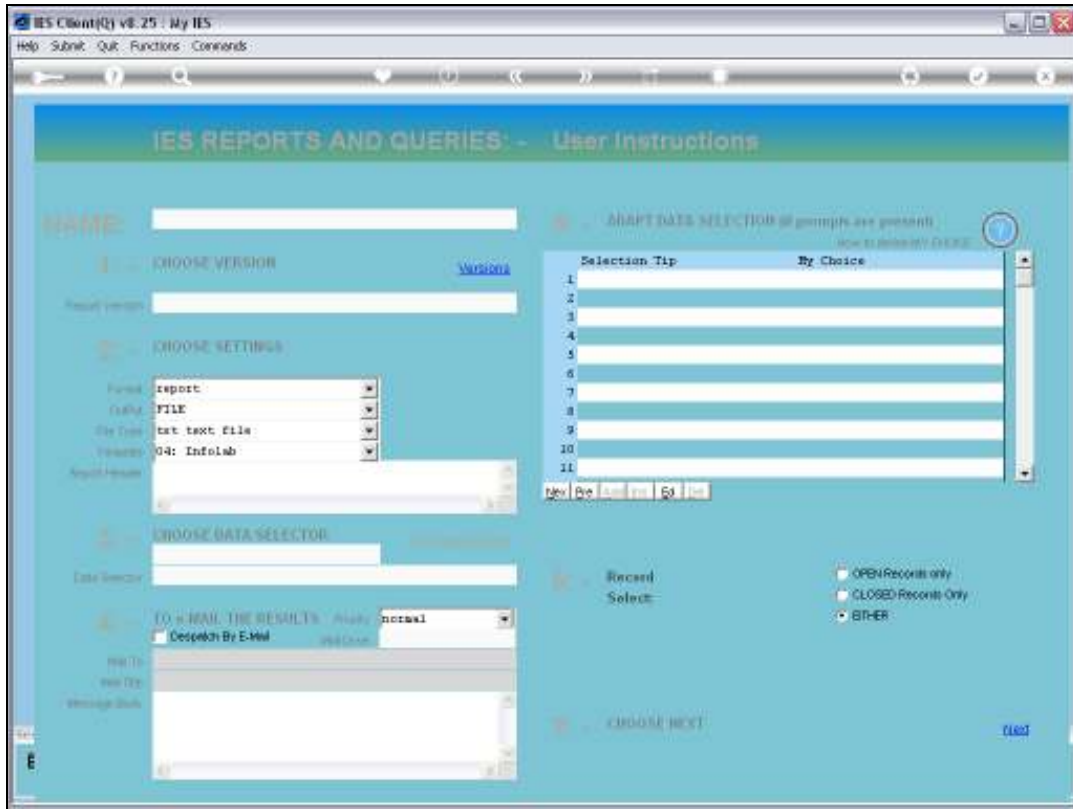
Slide 1

Slide notes: We will now look at the Inspection report that is used for Condition Monitoring.



Slide 2

Slide notes: The Report will lift out all Maintenance Items that are due for Inspection on the Condition Monitoring program.



Slide 3
Slide notes:

```
Q1544531880A.TXT - Notepad
File Edit Format View Help
InfoLab (Prp) Ltd
09:51:20 14 APR 2010 page 1

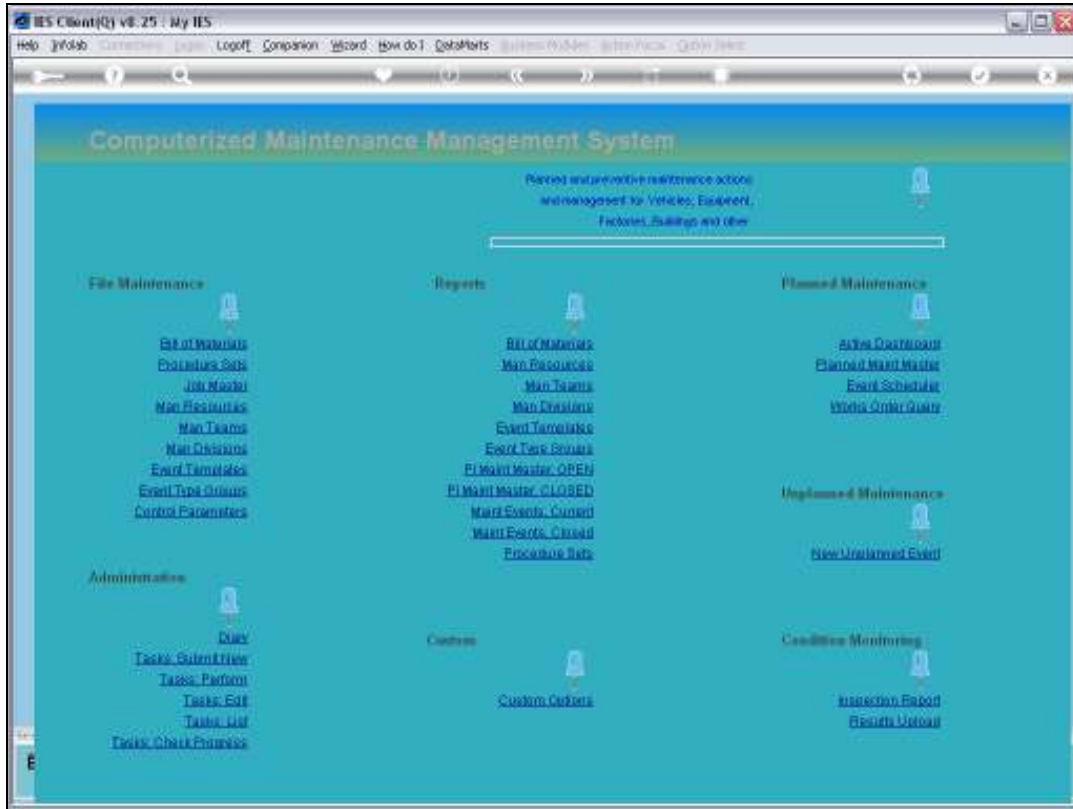
PLM Inspection Report

PLM Mater. Key..... Item Name..... What / Where.....
Isg002 Conveyor Chain Factory, Section E
Isg003 Transmission Chain # 2 Factory, Section E
vsh1252 HILUX 2000, R20209 Section C
vsh1254 HILUX 2000, UY0222 Section D
vsh1256 HILUX 2000, R20662 Section H
vsh1260 HILUX 2000, 2T022 Section C
VER1262 HILUX 2000, C0201 Section C

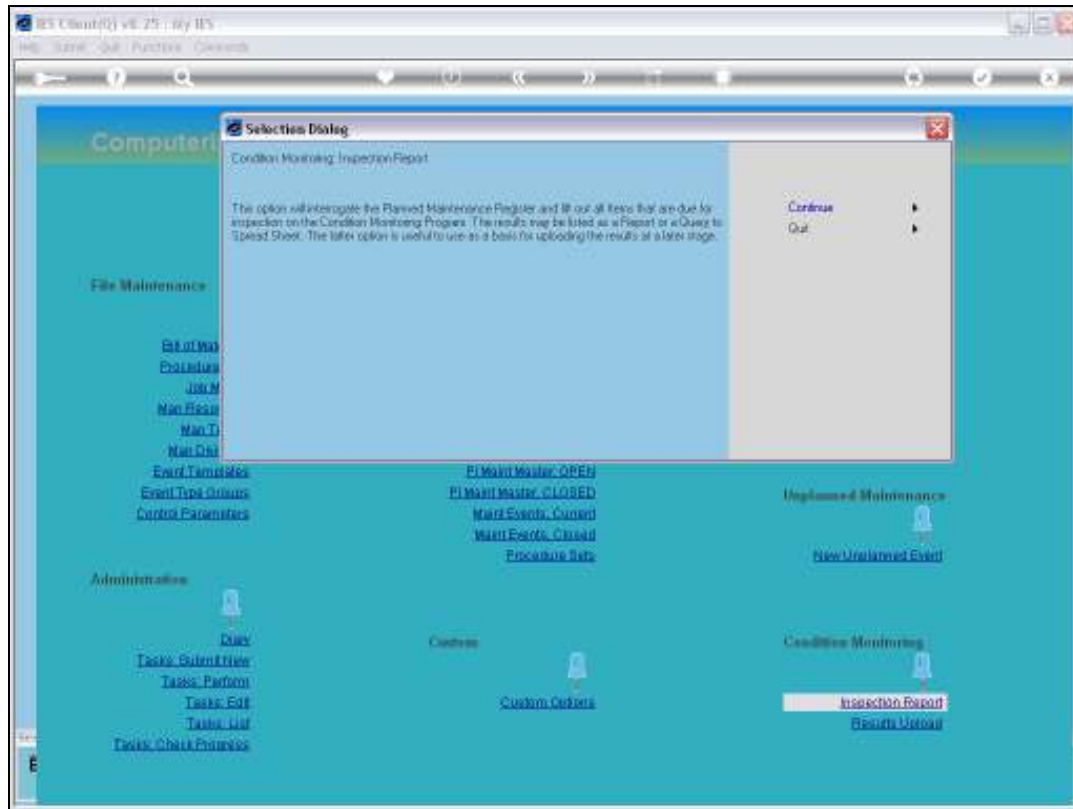
? record(s) listed
```

Slide 4

Slide notes: The output can be produced as a Report, as shown here.



Slide 5
Slide notes:



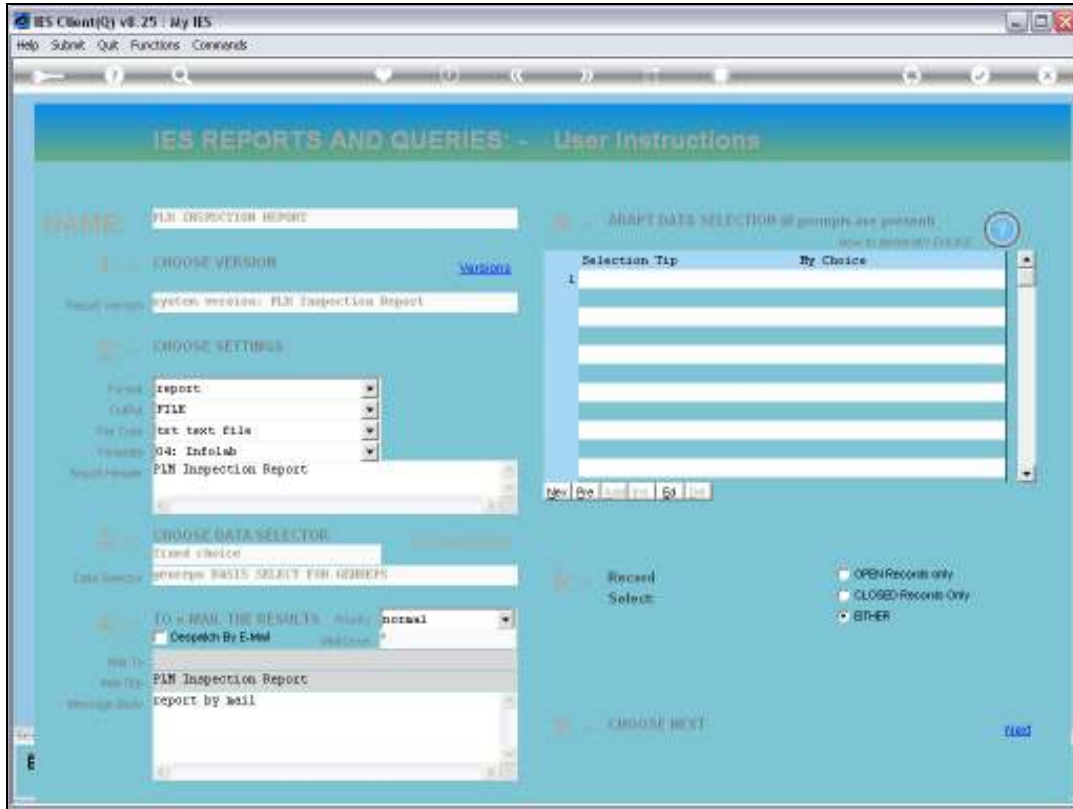
Slide 6

Slide notes: More commonly, the Report is output to Spread Sheet, which can then form the basis of the results to be imported after inspecting the listed Items.



Slide 7

Slide notes:



Slide 8
Slide notes:

IES Client(v) v8.25 : My IES
Help Submit Quit Functions Commands

IES REPORTS AND QUERIES - User Instructions

NAME: PIN INSPECTION REPORT

CHOOSE VERSION [Versions](#)
Current version: PIN Inspection Report

CHOOSE SETTINGS
Format: report
Output: report
File Type: query
Version: 04: Infolab
Report Name: PIN Inspection Report

CHOOSE DATA SELECTOR [Data Selectors](#)
Fixed choice: average BASIS SELECT FOR MEMBERS

TO E-MAIL THE RESULTS [Mail](#) normal
 Despatch By E-Mail
Mail To: PIN Inspection Report
Message Body: report by mail

RECORD SELECT
 OPN/Records only
 CLOSED/Records Only
 BT-ER

CHOOSE NEXT [Next](#)

ADAPT DATA SELECTION (if groups are present)
How to choose? (Click)

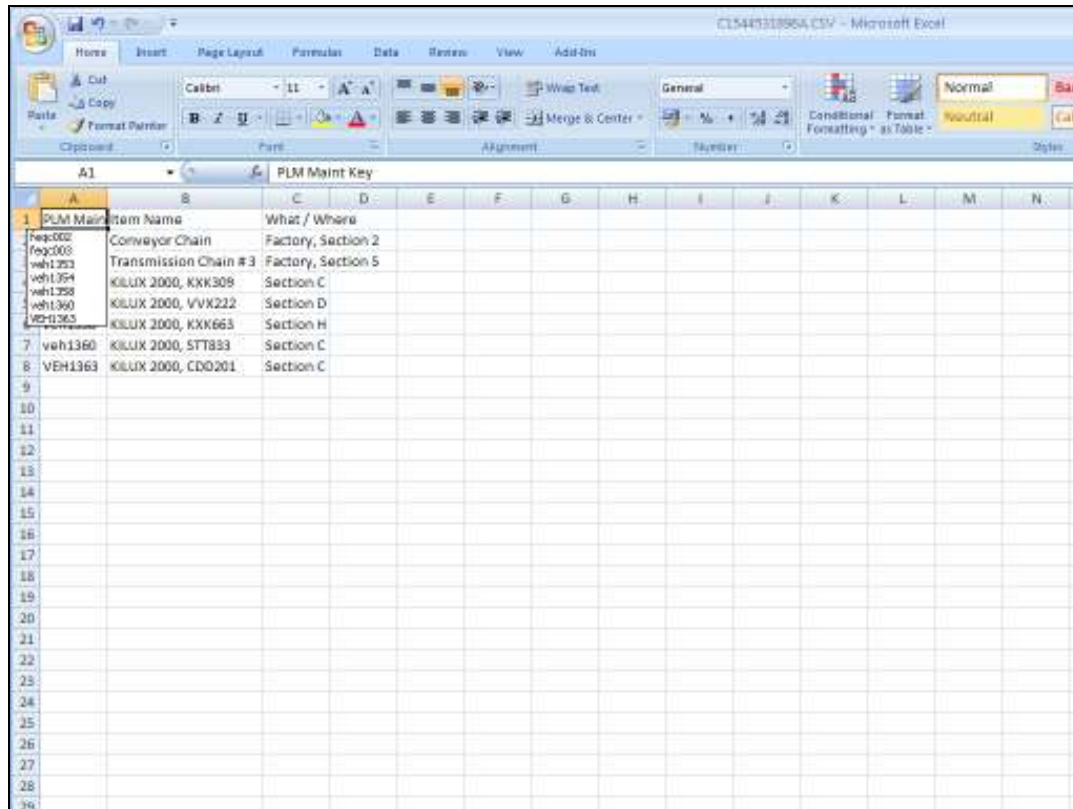
Selection Tip	By Choice
1	

Slide 9

Slide notes: In this case, we change the format to 'query'.



Slide 10
Slide notes:



The screenshot shows a Microsoft Excel spreadsheet with the following data:

	A	B	C	D	E	F	G	H	I	J	K	L	M	N
1	PLM Maint	Item Name	What / Where											
	Reg002	Conveyor Chain	Factory, Section 2											
	Reg003	Transmission Chain # 3	Factory, Section 5											
	veh1354	KILUX 2000, KXX309	Section C											
	veh1358	KILUX 2000, VVX222	Section D											
	veh1360	KILUX 2000, KXX663	Section H											
	VEH1363	KILUX 2000, STT833	Section C											
7	veh1360	KILUX 2000, STT833	Section C											
8	VEH1363	KILUX 2000, CDD201	Section C											
9														
10														
11														
12														
13														
14														
15														
16														
17														
18														
19														
20														
21														
22														
23														
24														
25														
26														
27														
28														
29														

Slide 11

Slide notes: And here we have the Inspection List in a Spread Sheet. In the tutorial where we deal with the results of the Inspection, we will use the same Spread Sheet again to upload the results.