

Slide 1

Slide notes: The Active Dashboard is used while working with Current Maintenance Events. It is used both for planning and for execution of Events.

Maintenance Event Dashboard

Sort By: [Work Order](#) | [Start Date](#) | [Remove Start Dates](#)

Actions: [Select Start Dates](#) | [Remove Start Dates](#) | [Remove HR](#)

HR All Reports: [By Work Order](#) | [By Person](#)

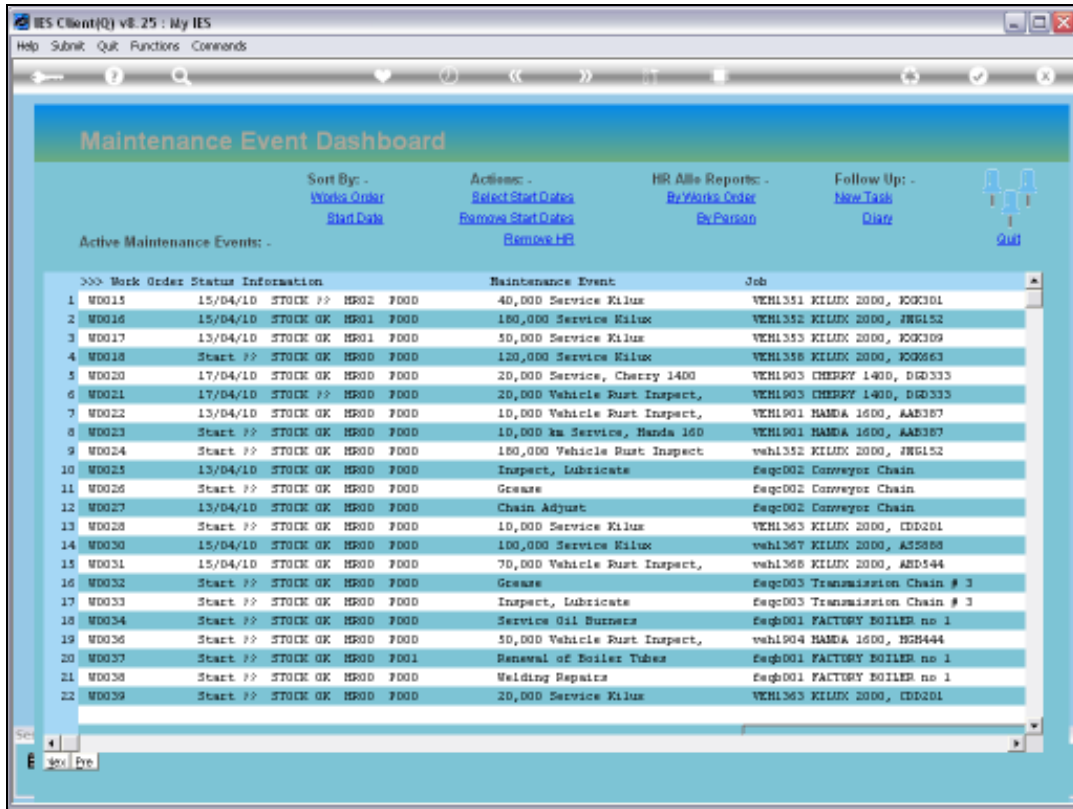
Follow Up: [New Task](#) | [Diary](#)

Active Maintenance Events: -

Work Order	Status	Information	Maintenance Event	Job		
1	MD015	15/04/10 STOCK ??	HR02 F000	40,000 Service Kilux	VEH1351 KILUX 2000, K0K301	
2	MD016	15/04/10 STOCK GK	HR01 F000	160,000 Service Kilux	VEH1352 KILUX 2000, JRG152	
3	MD017	13/04/10 STOCK GK	HR01 F000	50,000 Service Kilux	VEH1353 KILUX 2000, K0K309	
4	MD018	Start ??	STOCK GK	HR00 F000	120,000 Service Kilux	VEH1356 KILUX 2000, K0M663
5	MD020	17/04/10 STOCK GK	HR00 F000	20,000 Service, Cherry 1400	VEH1903 CHERRY 1400, DGD333	
6	MD021	17/04/10 STOCK ??	HR00 F000	20,000 Vehicle Rust Inspect,	VEH1903 CHERRY 1400, DGD333	
7	MD022	13/04/10 STOCK GK	HR00 F000	10,000 Vehicle Rust Inspect,	VEH1901 HANDA 1600, AAE367	
8	MD023	Start ??	STOCK GK	HR00 F000	10,000 km Service, Honda 160	VEH1901 HANDA 1600, AAE367
9	MD024	Start ??	STOCK GK	HR00 F000	160,000 Vehicle Rust Inspect	veh1352 KILUX 2000, JRG152
10	MD025	13/04/10 STOCK GK	HR00 F000	Inspect, Lubricate	Seq:002 Conveyor Chain	
11	MD026	Start ??	STOCK GK	HR00 F000	Grease	Seq:002 Conveyor Chain
12	MD027	13/04/10 STOCK GK	HR00 F000	Chain Adjust	Seq:002 Conveyor Chain	
13	MD028	Start ??	STOCK GK	HR00 F000	10,000 Service Kilux	VEH1363 KILUX 2000, DDD201
14	MD030	15/04/10 STOCK GK	HR00 F000	100,000 Service Kilux	veh1367 KILUX 2000, A35888	
15	MD031	15/04/10 STOCK GK	HR00 F000	70,000 Vehicle Rust Inspect,	veh1368 KILUX 2000, ASD544	
16	MD032	Start ??	STOCK GK	HR00 F000	Grease	Seq:003 Transmission Chain # 3
17	MD033	Start ??	STOCK GK	HR00 F000	Inspect, Lubricate	Seq:003 Transmission Chain # 3
18	MD034	Start ??	STOCK GK	HR00 F000	Service Oil Burners	Seq:001 FACTORY BOILER no 1
19	MD036	Start ??	STOCK GK	HR00 F000	50,000 Vehicle Rust Inspect,	veh1904 HANDA 1600, H2H444
20	MD037	Start ??	STOCK GK	HR00 F001	Renewal of Boiler Tubes	Seq:001 FACTORY BOILER no 1
21	MD038	Start ??	STOCK GK	HR00 F000	Welding Repairs	Seq:001 FACTORY BOILER no 1
22	MD039	Start ??	STOCK GK	HR00 F000	20,000 Service Kilux	VEH1363 KILUX 2000, DDD201

Slide 2

Slide notes: We will now consider the display options and the meanings thereof.



Slide 3

Slide notes: When an Event is triggered to the ACTIVE status and for appearance on the Active Dashboard, then it is automatically assigned a Works Order Number. The Active Events can be sorted and displayed by Works Order Number or by Event Start Date.

Maintenance Event Dashboard

Sort By: [Work Order](#) | [Start Date](#) | [End Date](#)

Actions: [Select Start Dates](#) | [Remove Start Dates](#) | [Remove HR](#)

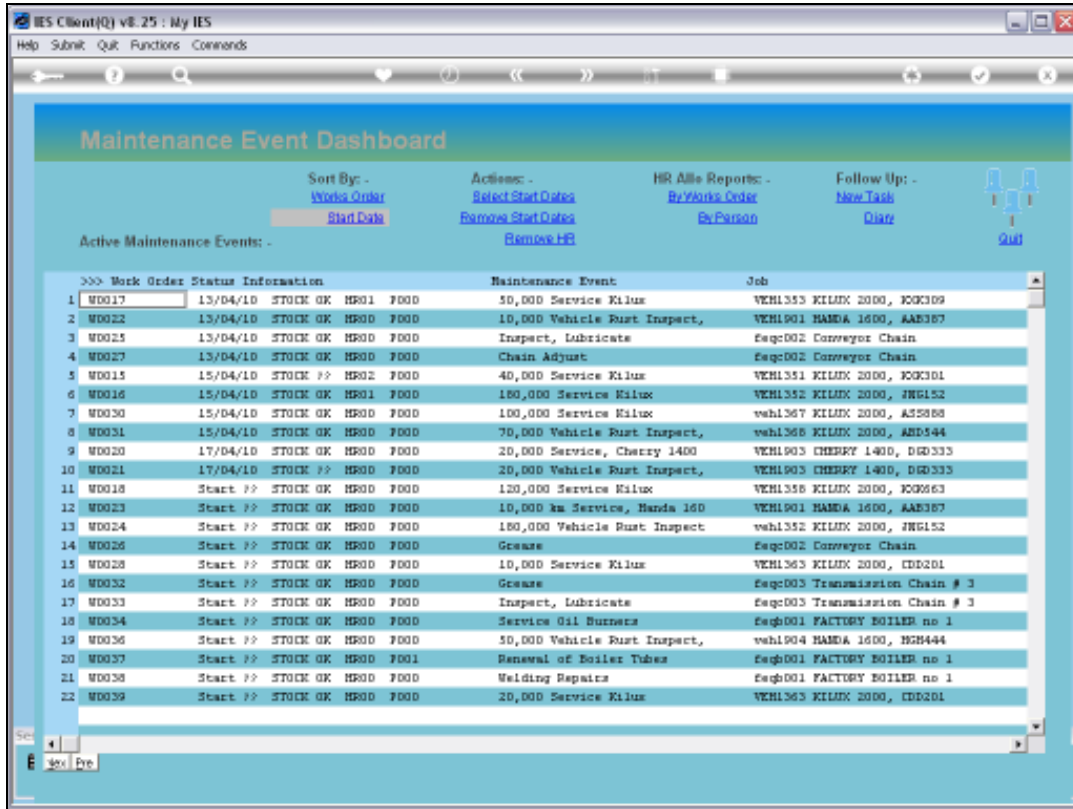
HR All Reports: [By Work Order](#) | [By Person](#)

Follow Up: [New Task](#) | [Diary](#)

Active Maintenance Events: -

Work Order	Status	Information	Maintenance Event	Job	
1 W0015	15/04/10	STOCK ??	HR02 F000	40,000 Service Kilux	VEH1351 KILUX 2000, F00301
2 W0016	15/04/10	STOCK OK	HR01 F000	100,000 Service Kilux	VEH1352 KILUX 2000, JRG152
3 W0017	13/04/10	STOCK OK	HR01 F000	50,000 Service Kilux	VEH1353 KILUX 2000, F00309
4 W0018	Start ??	STOCK OK	HR00 F000	120,000 Service Kilux	VEH1356 KILUX 2000, F00363
5 W0020	17/04/10	STOCK OK	HR00 F000	20,000 Service, Cherry 1400	VEH1903 CHERRY 1400, D00333
6 W0021	17/04/10	STOCK ??	HR00 F000	20,000 Vehicle Rust Inspect.	VEH1903 CHERRY 1400, D00333
7 W0022	13/04/10	STOCK OK	HR00 F000	10,000 Vehicle Rust Inspect.	VEH1901 HANDA 1600, AAE387
8 W0023	Start ??	STOCK OK	HR00 F000	10,000 km Service, Honda 160	VEH1901 HANDA 1600, AAE387
9 W0024	Start ??	STOCK OK	HR00 F000	100,000 Vehicle Rust Inspect	veh1352 KILUX 2000, JRG152
10 W0025	13/04/10	STOCK OK	HR00 F000	Inspect, Lubricate	Eqc002 Conveyor Chain
11 W0026	Start ??	STOCK OK	HR00 F000	Grease	Eqc002 Conveyor Chain
12 W0027	13/04/10	STOCK OK	HR00 F000	Chain Adjust	Eqc002 Conveyor Chain
13 W0028	Start ??	STOCK OK	HR00 F000	10,000 Service Kilux	VEH1363 KILUX 2000, CDD201
14 W0030	15/04/10	STOCK OK	HR00 F000	100,000 Service Kilux	veh1367 KILUX 2000, A32988
15 W0031	15/04/10	STOCK OK	HR00 F000	70,000 Vehicle Rust Inspect.	veh1368 KILUX 2000, AND544
16 W0032	Start ??	STOCK OK	HR00 F000	Grease	Eqc003 Transmission Chain # 3
17 W0033	Start ??	STOCK OK	HR00 F000	Inspect, Lubricate	Eqc003 Transmission Chain # 3
18 W0034	Start ??	STOCK OK	HR00 F000	Service Oil Burners	Eqc001 FACTORY BOILER no 1
19 W0036	Start ??	STOCK OK	HR00 F000	50,000 Vehicle Rust Inspect.	veh1904 HANDA 1600, HGH444
20 W0037	Start ??	STOCK OK	HR00 F001	Renewal of Boiler Tubes	Eqc001 FACTORY BOILER no 1
21 W0038	Start ??	STOCK OK	HR00 F000	Welding Repairs	Eqc001 FACTORY BOILER no 1
22 W0039	Start ??	STOCK OK	HR00 F000	20,000 Service Kilux	VEH1363 KILUX 2000, CDD201

Slide 4
Slide notes:



Slide 5

Slide notes: Once we choose the 'Start Date' sequence, the Events with an assigned Start Date are sorted accordingly, and those without an assigned Start Date drop to the bottom.

Maintenance Event Dashboard

Sort By: - [Work Order](#)
[Start Date](#)

Actions: - [Select Start Dates](#)
[Remove Start Dates](#)
[Remove HR](#)

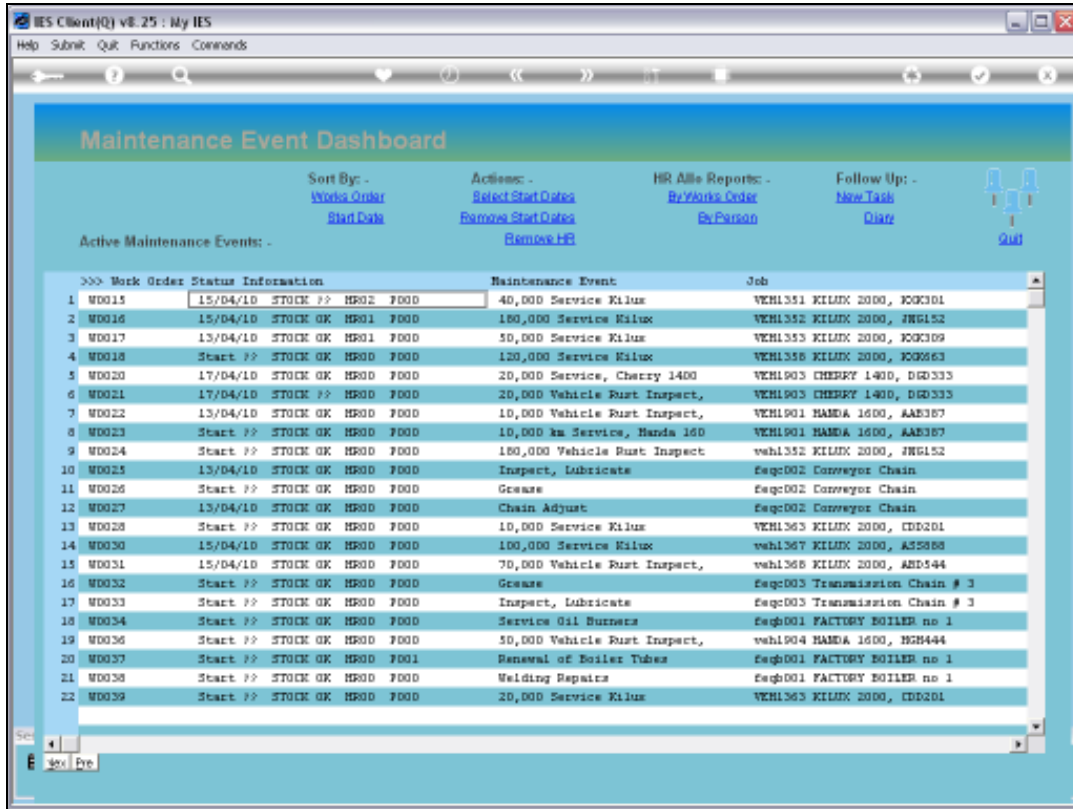
HR All Reports: - [By Work Order](#)
[By Person](#)

Follow Up: - [New Task](#)
[Diary](#)

Active Maintenance Events: - [Quit](#)

Work Order	Status	Information	Maintenance Event	Job
1 W0017	15/04/10	STOCK GK HP01 F000	50,000 Service Kilux	VEH1353 KILUX 2000, K0K309
2 W0022	15/04/10	STOCK GK HP00 F000	10,000 Vehicle Rust Inspect,	VEH1901 HANDA 1600, AAE387
3 W0025	15/04/10	STOCK GK HP00 F000	Inspect, Lubricate	Eqc002 Conveyor Chain
4 W0027	15/04/10	STOCK GK HP00 F000	Chain Adjust	Eqc002 Conveyor Chain
5 W0015	15/04/10	STOCK ?? HP02 F000	40,000 Service Kilux	VEH1351 KILUX 2000, K0K301
6 W0016	15/04/10	STOCK GK HP01 F000	180,000 Service Kilux	VEH1352 KILUX 2000, JRG152
7 W0030	15/04/10	STOCK GK HP00 F000	100,000 Service Kilux	veh1367 KILUX 2000, ASD588
8 W0031	15/04/10	STOCK GK HP00 F000	70,000 Vehicle Rust Inspect,	veh1368 KILUX 2000, ASD544
9 W0020	17/04/10	STOCK GK HP00 F000	20,000 Service, Cherry 1400	VEH1903 CHERRY 1400, DGD333
10 W0021	17/04/10	STOCK ?? HP00 F000	20,000 Vehicle Rust Inspect,	VEH1903 CHERRY 1400, DGD333
11 W0018	Start ??	STOCK GK HP00 F000	120,000 Service Kilux	VEH1358 KILUX 2000, K0K663
12 W0023	Start ??	STOCK GK HP00 F000	10,000 km Service, Handa 160	VEH1901 HANDA 1600, AAE387
13 W0024	Start ??	STOCK GK HP00 F000	180,000 Vehicle Rust Inspect	veh1352 KILUX 2000, JRG152
14 W0026	Start ??	STOCK GK HP00 F000	Gearse	Eqc002 Conveyor Chain
15 W0028	Start ??	STOCK GK HP00 F000	10,000 Service Kilux	VEH1363 KILUX 2000, DDD201
16 W0032	Start ??	STOCK GK HP00 F000	Gearse	Eqc003 Transmission Chain # 3
17 W0033	Start ??	STOCK GK HP00 F000	Inspect, Lubricate	Eqc003 Transmission Chain # 3
18 W0034	Start ??	STOCK GK HP00 F000	Service Oil Burners	Eqc001 FACTORY BOILER no 1
19 W0036	Start ??	STOCK GK HP00 F000	50,000 Vehicle Rust Inspect,	veh1904 HANDA 1600, H2H444
20 W0037	Start ??	STOCK GK HP00 F001	Renewal of Boiler Tubes	Eqc001 FACTORY BOILER no 1
21 W0038	Start ??	STOCK GK HP00 F000	Welding Repairs	Eqc001 FACTORY BOILER no 1
22 W0039	Start ??	STOCK GK HP00 F000	20,000 Service Kilux	VEH1363 KILUX 2000, DDD201

Slide 6
Slide notes:



Slide 7

Slide notes: When we select 'Works Order' sequence, then all Events appear in Works Order sequence, irrespective of Start Date being assigned or not, or what the Start Date may be.

Maintenance Event Dashboard

Sort By: [Work Order](#) | [Start Date](#) | [Remove Start Dates](#)

Actions: [Select Start Dates](#) | [Remove Start Dates](#) | [Remove HR](#)

HR All Reports: [By Work Order](#) | [By Person](#)

Follow Up: [New Task](#) | [Diary](#)

Active Maintenance Events: -

Work Order	Status	Information	Maintenance Event	Job	
1 W0015	15/04/10	STOCK ??	HR02 F000	40,000 Service Kilux	VEH1351 KILUX 2000, K0K301
2 W0016	15/04/10	STOCK GK	HR01 F000	160,000 Service Kilux	VEH1352 KILUX 2000, JRG152
3 W0017	13/04/10	STOCK GK	HR01 F000	50,000 Service Kilux	VEH1353 KILUX 2000, K0K309
4 W0018	Start ??	STOCK GK	HR00 F000	120,000 Service Kilux	VEH1356 KILUX 2000, K0M663
5 W0020	17/04/10	STOCK GK	HR00 F000	20,000 Service, Cherry 1400	VEH1903 CHERRY 1400, DGD333
6 W0021	17/04/10	STOCK ??	HR00 F000	20,000 Vehicle Rust Inspect,	VEH1903 CHERRY 1400, DGD333
7 W0022	13/04/10	STOCK GK	HR00 F000	10,000 Vehicle Rust Inspect,	VEH1901 HANDA 1600, AAE387
8 W0023	Start ??	STOCK GK	HR00 F000	10,000 km Service, Handa 160	VEH1901 HANDA 1600, AAE387
9 W0024	Start ??	STOCK GK	HR00 F000	160,000 Vehicle Rust Inspect	veh1352 KILUX 2000, JRG152
10 W0025	13/04/10	STOCK GK	HR00 F000	Inspect, Lubricate	Seq002 Conveyor Chain
11 W0026	Start ??	STOCK GK	HR00 F000	Grease	Seq002 Conveyor Chain
12 W0027	13/04/10	STOCK GK	HR00 F000	Chain Adjust	Seq002 Conveyor Chain
13 W0028	Start ??	STOCK GK	HR00 F000	10,000 Service Kilux	VEH1363 KILUX 2000, DDD201
14 W0030	15/04/10	STOCK GK	HR00 F000	100,000 Service Kilux	veh1367 KILUX 2000, A35888
15 W0031	15/04/10	STOCK GK	HR00 F000	70,000 Vehicle Rust Inspect,	veh1368 KILUX 2000, ASD444
16 W0032	Start ??	STOCK GK	HR00 F000	Grease	Seq003 Transmission Chain # 3
17 W0033	Start ??	STOCK GK	HR00 F000	Inspect, Lubricate	Seq003 Transmission Chain # 3
18 W0034	Start ??	STOCK GK	HR00 F000	Service Oil Burners	Seq001 FACTORY BOILER no 1
19 W0036	Start ??	STOCK GK	HR00 F000	50,000 Vehicle Rust Inspect,	veh1904 HANDA 1600, H2H444
20 W0037	Start ??	STOCK GK	HR00 F001	Renewal of Boiler Tubes	Seq001 FACTORY BOILER no 1
21 W0038	Start ??	STOCK GK	HR00 F000	Welding Repairs	Seq001 FACTORY BOILER no 1
22 W0039	Start ??	STOCK GK	HR00 F000	20,000 Service Kilux	VEH1363 KILUX 2000, DDD201

Slide 8
Slide notes:

IES Client v8.25 : My IES

Help Submit Quit Functions Commands

Maintenance Event Dashboard

Sort By: - [Work Order](#) [Start Date](#)

Actions: - [Select Start Dates](#) [Remove Start Dates](#) [Remove HR](#)

HR All Reports: - [By Work Order](#) [By Person](#)

Follow Up: - [New Task](#) [Diary](#)

Active Maintenance Events: - [Quit](#)

>>> Work Order	Status	Information	Maintenance Event	Job		
1	W0017	13/04/10	STOCK OK	HR01 F000	50,000 Service Kilux	VEH1353 KILUX 2000, K0K309
2	W0022	13/04/10	STOCK OK	HR00 F000	10,000 Vehicle Rust Inspect,	VEH1901 HANDA 1600, AAE387
3	W0025	13/04/10	STOCK OK	HR00 F000	Inspect, Lubricate	Eqc002 Conveyor Chain
4	W0027	13/04/10	STOCK OK	HR00 F000	Chain Adjust	Eqc002 Conveyor Chain
5	W0015	15/04/10	STOCK ??	HR02 F000	40,000 Service Kilux	VEH1351 KILUX 2000, K0K301
6	W0016	15/04/10	STOCK OK	HR01 F000	180,000 Service Kilux	VEH1352 KILUX 2000, JRG152
7	W0030	15/04/10	STOCK OK	HR00 F000	100,000 Service Kilux	veh1367 KILUX 2000, A25888
8	W0031	15/04/10	STOCK OK	HR00 F000	70,000 Vehicle Rust Inspect,	veh1368 KILUX 2000, A8D544
9	W0020	17/04/10	STOCK OK	HR00 F000	20,000 Service, Cherry 1400	VEH1903 CHERRY 1400, D6D333
10	W0021	17/04/10	STOCK ??	HR00 F000	20,000 Vehicle Rust Inspect,	VEH1903 CHERRY 1400, D6D333
11	W0018	Start ??	STOCK OK	HR00 F000	120,000 Service Kilux	VEH1358 KILUX 2000, K0K663
12	W0023	Start ??	STOCK OK	HR00 F000	10,000 km Service, Handa 160	VEH1901 HANDA 1600, AAE387
13	W0024	Start ??	STOCK OK	HR00 F000	180,000 Vehicle Rust Inspect	veh1352 KILUX 2000, JRG152
14	W0026	Start ??	STOCK OK	HR00 F000	Gearase	Eqc002 Conveyor Chain
15	W0028	Start ??	STOCK OK	HR00 F000	10,000 Service Kilux	VEH1363 KILUX 2000, CDD201
16	W0032	Start ??	STOCK OK	HR00 F000	Gearase	Eqc003 Transmission Chain # 3
17	W0033	Start ??	STOCK OK	HR00 F000	Inspect, Lubricate	Eqc003 Transmission Chain # 3
18	W0034	Start ??	STOCK OK	HR00 F000	Service Oil Burners	Eqc001 FACTORY BOILER no 1
19	W0036	Start ??	STOCK OK	HR00 F000	50,000 Vehicle Rust Inspect,	veh1904 HANDA 1600, H2H444
20	W0037	Start ??	STOCK OK	HR00 F001	Renewal of Boiler Tubes	Eqc001 FACTORY BOILER no 1
21	W0038	Start ??	STOCK OK	HR00 F000	Welding Repairs	Eqc001 FACTORY BOILER no 1
22	W0039	Start ??	STOCK OK	HR00 F000	20,000 Service Kilux	VEH1363 KILUX 2000, CDD201

Slide 9

Slide notes: For each Event, the system indicates critical planning signals. 'STOCK OK' means there is no Stock Requirement, or all Stock Items have been reserved. 'STOCK ??' means there is at least some Stock Item or multiples that are required and that have not been reserved. Of course, if the Resources for an Event have not been loaded, there will not be a Stock Requirement yet, although there may be later.

The screenshot shows a web browser window titled "IES Client v8.25 : My IES". The main content area is a "Maintenance Event Dashboard". At the top, there are navigation links for "Sort By:" (Work Order, Start Date), "Actions:" (Select Start Dates, Remove Start Dates, Remove HE), "HR All Reports:" (By Work Order, By Person), and "Follow Up:" (New Task, Diary). Below these is a section for "Active Maintenance Events:" with a "Quit" button. The main part of the dashboard is a table with three columns: "Work Order Status Information", "Maintenance Event", and "Job". The table contains 22 rows of data, each representing a work order with its start date, status, stock requirements, maintenance event description, and job details.

Work Order	Status	Information	Maintenance Event	Job
1 W0017	15/04/10	STOCK GK HP01 F000	50,000 Service Kilux	VEH1353 KILUX 2000, K0K309
2 W0022	15/04/10	STOCK GK HP00 F000	10,000 Vehicle Rust Inspect,	VEH1901 HANDA 1600, AAE387
3 W0025	15/04/10	STOCK GK HP00 F000	Inspect, Lubricate	Eqc002 Conveyor Chain
4 W0027	15/04/10	STOCK GK HP00 F000	Chain Adjust	Eqc002 Conveyor Chain
5 W0015	15/04/10	STOCK ?? HP02 F000	40,000 Service Kilux	VEH1351 KILUX 2000, K0K301
6 W0016	15/04/10	STOCK GK HP01 F000	180,000 Service Kilux	VEH1352 KILUX 2000, JRG152
7 W0030	15/04/10	STOCK GK HP00 F000	100,000 Service Kilux	veh1367 KILUX 2000, ASD588
8 W0031	15/04/10	STOCK GK HP00 F000	70,000 Vehicle Rust Inspect,	veh1368 KILUX 2000, ASD544
9 W0020	17/04/10	STOCK GK HP00 F000	20,000 Service, Cherry 1400	VEH1903 CHERRY 1400, DGD333
10 W0021	17/04/10	STOCK ?? HP00 F000	20,000 Vehicle Rust Inspect,	VEH1903 CHERRY 1400, DGD333
11 W0018	Start ??	STOCK GK HP00 F000	120,000 Service Kilux	VEH1358 KILUX 2000, K0K663
12 W0023	Start ??	STOCK GK HP00 F000	10,000 km Service, Handa 160	VEH1901 HANDA 1600, AAE387
13 W0024	Start ??	STOCK GK HP00 F000	180,000 Vehicle Rust Inspect	veh1352 KILUX 2000, JRG152
14 W0026	Start ??	STOCK GK HP00 F000	Gearase	Eqc002 Conveyor Chain
15 W0028	Start ??	STOCK GK HP00 F000	10,000 Service Kilux	VEH1363 KILUX 2000, DDD201
16 W0032	Start ??	STOCK GK HP00 F000	Gearase	Eqc003 Transmission Chain # 3
17 W0033	Start ??	STOCK GK HP00 F000	Inspect, Lubricate	Eqc003 Transmission Chain # 3
18 W0034	Start ??	STOCK GK HP00 F000	Service Oil Burners	Eqc001 FACTORY BOILER no 1
19 W0036	Start ??	STOCK GK HP00 F000	50,000 Vehicle Rust Inspect,	veh1904 HANDA 1600, HGH444
20 W0037	Start ??	STOCK GK HP00 F001	Renewal of Boiler Tubes	Eqc001 FACTORY BOILER no 1
21 W0038	Start ??	STOCK GK HP00 F000	Welding Repairs	Eqc001 FACTORY BOILER no 1
22 W0039	Start ??	STOCK GK HP00 F000	20,000 Service Kilux	VEH1363 KILUX 2000, DDD201

Slide 10

Slide notes: Let's look at this example, where we have an indicator that some Stock requirement has not been reserved.

Maintenance Event Dashboard

Sort By: [Work Order](#) | [Start Date](#) | [Remove Start Dates](#) | [Remove HR](#)

Actions: [Select Start Dates](#) | [Remove Start Dates](#) | [Remove HR](#)

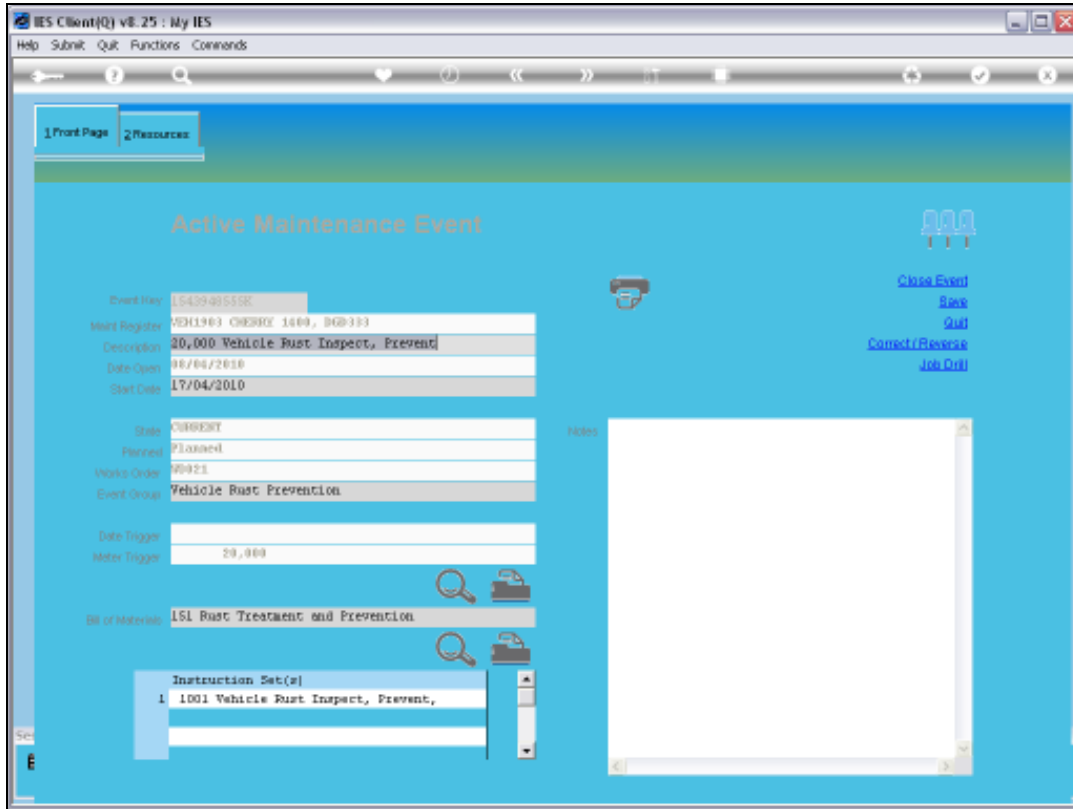
HR All Reports: [By Work Order](#) | [By Person](#)

Follow Up: [New Task](#) | [Diary](#)

Active Maintenance Events: -

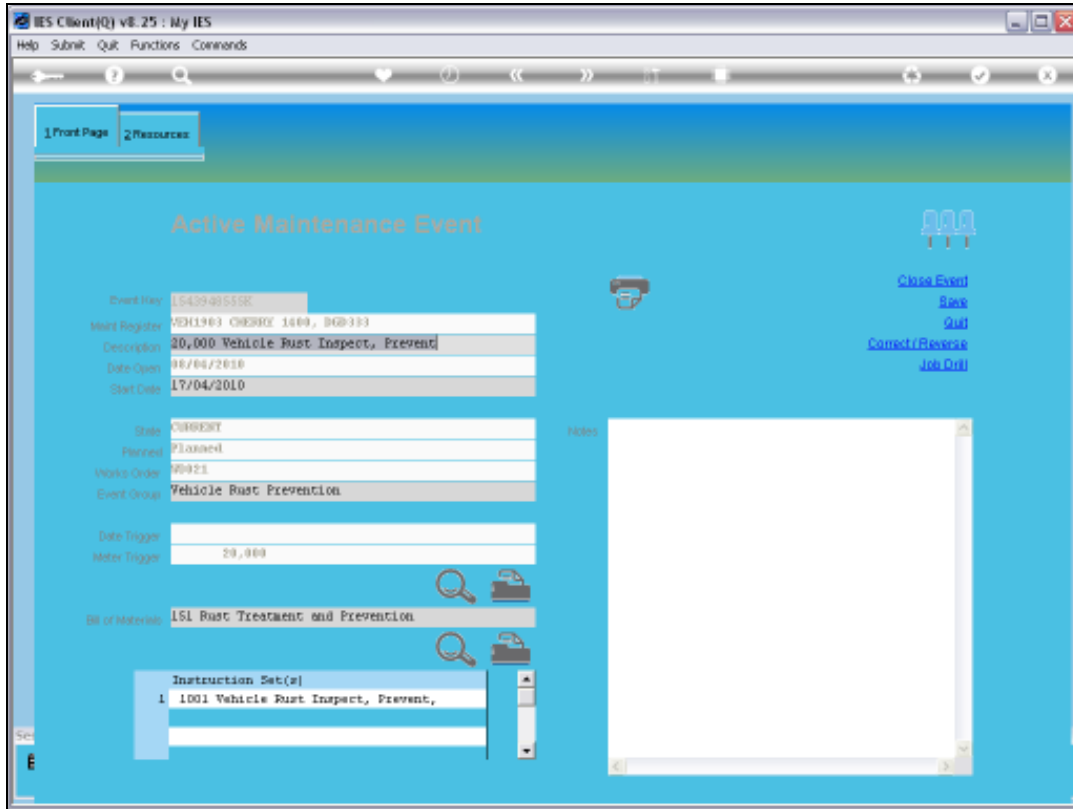
Work Order	Status	Information	Maintenance Event	Job	
1 WD017	15/04/10	STOCK OK	HR01 F000	50,000 Service Kilux	VEH1353 KILUX 2000, K0K309
2 WD022	15/04/10	STOCK OK	HR00 F000	10,000 Vehicle Rust Inspect,	VEH1901 HANDA 1600, AAE387
3 WD025	15/04/10	STOCK OK	HR00 F000	Inspect, Lubricate	Eqc002 Conveyor Chain
4 WD027	15/04/10	STOCK OK	HR00 F000	Chain Adjust	Eqc002 Conveyor Chain
5 WD015	15/04/10	STOCK ??	HR02 F000	40,000 Service Kilux	VEH1351 KILUX 2000, K0K301
6 WD016	15/04/10	STOCK OK	HR01 F000	180,000 Service Kilux	VEH1352 KILUX 2000, JRG152
7 WD030	15/04/10	STOCK OK	HR00 F000	100,000 Service Kilux	veh1367 KILUX 2000, ASD588
8 WD031	15/04/10	STOCK OK	HR00 F000	70,000 Vehicle Rust Inspect,	veh1368 KILUX 2000, ASD544
9 WD020	17/04/10	STOCK OK	HR00 F000	20,000 Service, Cherry 1400	VEH1903 CHERRY 1400, DGD333
10 WD021	17/04/10	STOCK ??	HR00 F000	20,000 Vehicle Rust Inspect,	VEH1903 CHERRY 1400, DGD333
11 WD018	Start ??	STOCK OK	HR00 F000	120,000 Service Kilux	VEH1358 KILUX 2000, K0K663
12 WD023	Start ??	STOCK OK	HR00 F000	10,000 km Service, Handa 160	VEH1901 HANDA 1600, AAE387
13 WD024	Start ??	STOCK OK	HR00 F000	180,000 Vehicle Rust Inspect	veh1352 KILUX 2000, JRG152
14 WD026	Start ??	STOCK OK	HR00 F000	Gearbox	Eqc002 Conveyor Chain
15 WD028	Start ??	STOCK OK	HR00 F000	10,000 Service Kilux	VEH1363 KILUX 2000, DDD201
16 WD032	Start ??	STOCK OK	HR00 F000	Gearbox	Eqc003 Transmission Chain # 3
17 WD033	Start ??	STOCK OK	HR00 F000	Inspect, Lubricate	Eqc003 Transmission Chain # 3
18 WD034	Start ??	STOCK OK	HR00 F000	Service Oil Burners	Eqc001 FACTORY BOILER no 1
19 WD036	Start ??	STOCK OK	HR00 F000	50,000 Vehicle Rust Inspect,	veh1904 HANDA 1600, H2H444
20 WD037	Start ??	STOCK OK	HR00 F001	Renewal of Boiler Tubes	Eqc001 FACTORY BOILER no 1
21 WD038	Start ??	STOCK OK	HR00 F000	Welding Repairs	Eqc001 FACTORY BOILER no 1
22 WD039	Start ??	STOCK OK	HR00 F000	20,000 Service Kilux	VEH1363 KILUX 2000, DDD201

Slide 11
Slide notes:



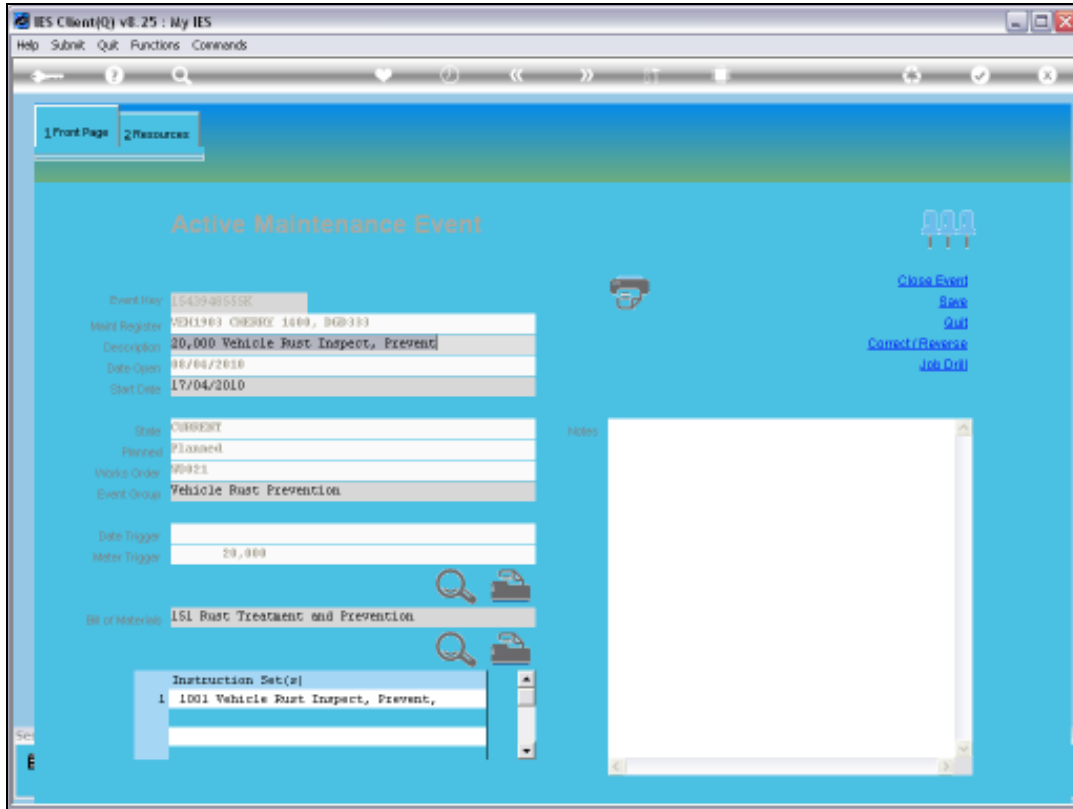
Slide 12

Slide notes:

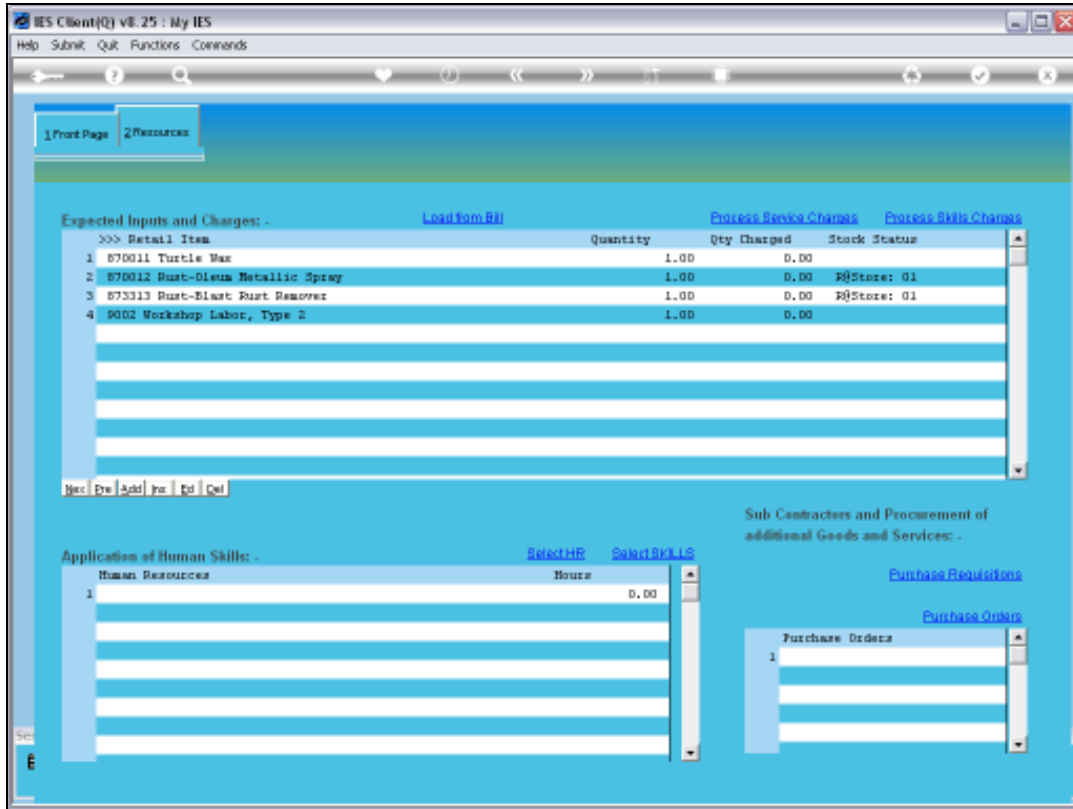


Slide 13

Slide notes:

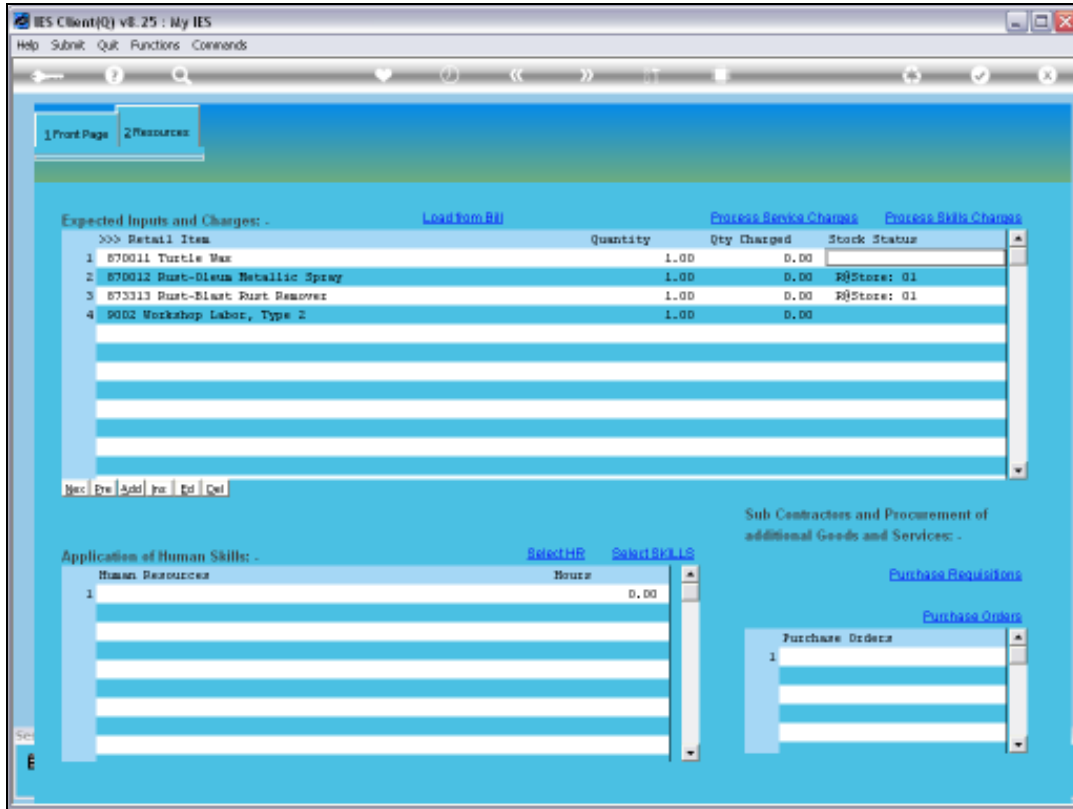


Slide 14
Slide notes:



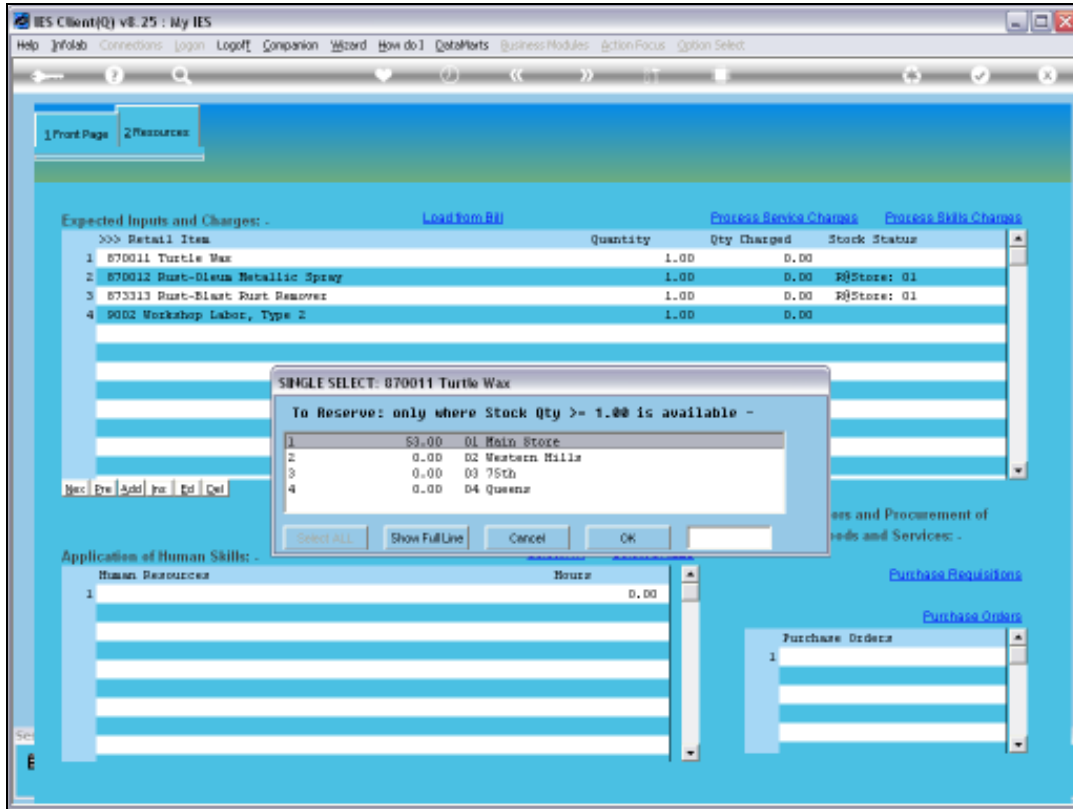
Slide 15

Slide notes: And here we can see the Stock Item that has not been reserved.

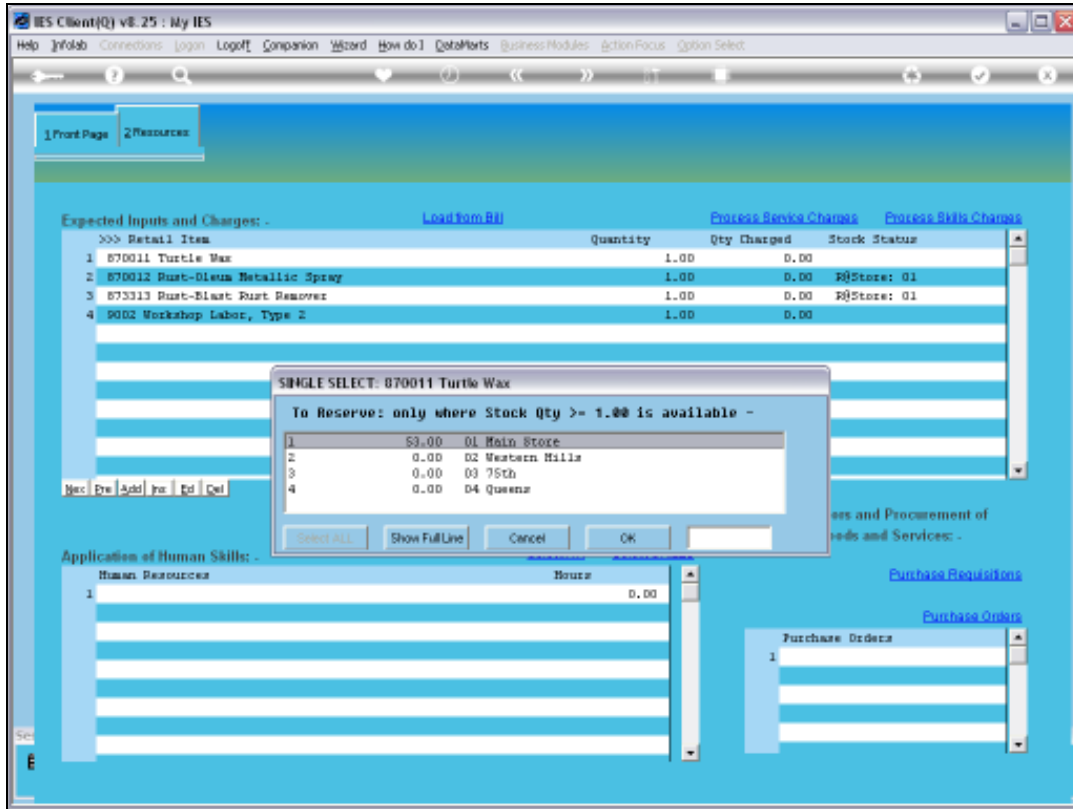


Slide 16

Slide notes:

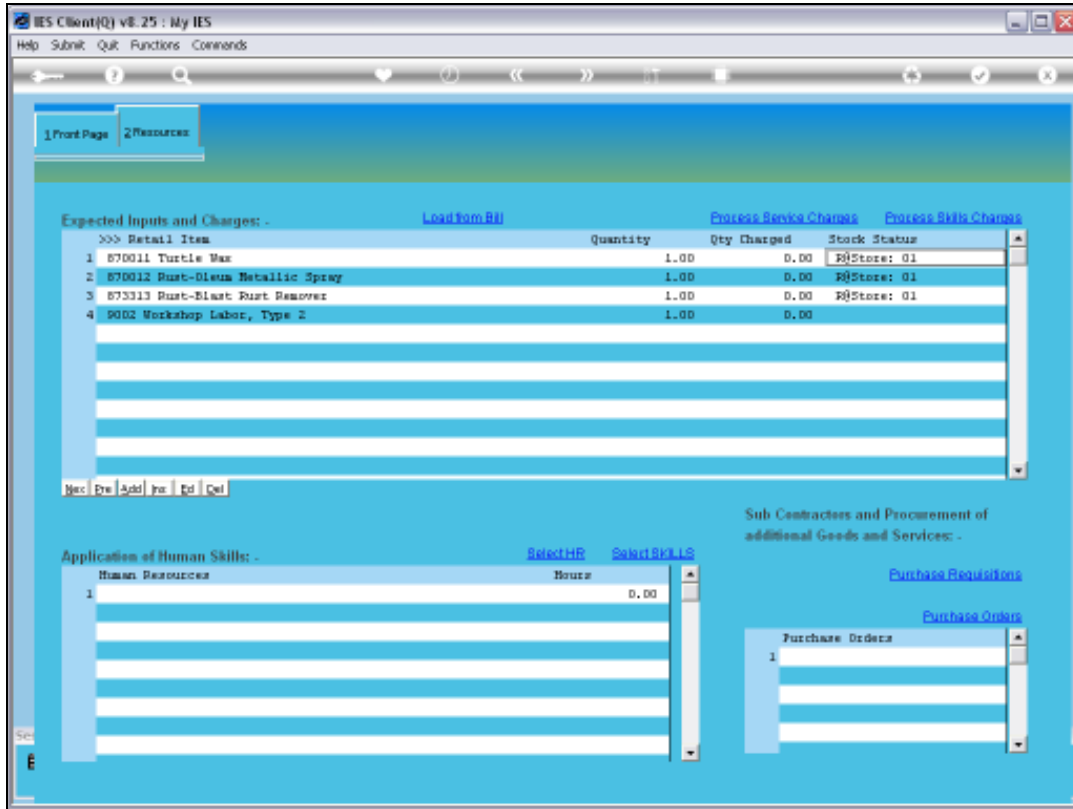


Slide 17
Slide notes:



Slide 18

Slide notes:



Slide 19
Slide notes:

Maintenance Event Dashboard

Sort By: [Work Order](#) | [Start Date](#) | [Remove Start Dates](#) | [Remove HR](#)

Actions: [Select Start Dates](#) | [Remove Start Dates](#) | [Remove HR](#)

HR All Reports: [By Work Order](#) | [By Person](#)

Follow Up: [New Task](#) | [Diary](#)

Active Maintenance Events: -

Work Order	Status	Information	Maintenance Event	Job		
1	MD017	13/04/10	STOCK OK	HR01 F000	50,000 Service Kilux	VEH1353 KILUX 2000, K0K309
2	MD022	13/04/10	STOCK OK	HR00 F000	10,000 Vehicle Rust Inspect,	VEH1901 HANDA 1600, AAE387
3	MD025	13/04/10	STOCK OK	HR00 F000	Inspect, Lubricate	Eqc002 Conveyor Chain
4	MD027	13/04/10	STOCK OK	HR00 F000	Chain Adjust	Eqc002 Conveyor Chain
5	MD015	15/04/10	STOCK ??	HR02 F000	40,000 Service Kilux	VEH1351 KILUX 2000, K0K301
6	MD016	15/04/10	STOCK OK	HR01 F000	180,000 Service Kilux	VEH1352 KILUX 2000, JRG152
7	MD030	15/04/10	STOCK OK	HR00 F000	100,000 Service Kilux	veh1367 KILUX 2000, ASD588
8	MD031	15/04/10	STOCK OK	HR00 F000	70,000 Vehicle Rust Inspect,	veh1368 KILUX 2000, ASD544
9	MD020	17/04/10	STOCK OK	HR00 F000	20,000 Service, Cherry 1400	VEH1903 CHERRY 1400, DGD333
10	MD021	17/04/10	STOCK OK	HR00 F000	20,000 Vehicle Rust Inspect,	VEH1903 CHERRY 1400, DGD333
11	MD018	Start ??	STOCK OK	HR00 F000	120,000 Service Kilux	VEH1358 KILUX 2000, K0K663
12	MD023	Start ??	STOCK OK	HR00 F000	10,000 km Service, Handa 160	VEH1901 HANDA 1600, AAE387
13	MD024	Start ??	STOCK OK	HR00 F000	180,000 Vehicle Rust Inspect	veh1352 KILUX 2000, JRG152
14	MD026	Start ??	STOCK OK	HR00 F000	Gearase	Eqc002 Conveyor Chain
15	MD028	Start ??	STOCK OK	HR00 F000	10,000 Service Kilux	VEH1363 KILUX 2000, DDD201
16	MD032	Start ??	STOCK OK	HR00 F000	Gearase	Eqc003 Transmission Chain # 3
17	MD033	Start ??	STOCK OK	HR00 F000	Inspect, Lubricate	Eqc003 Transmission Chain # 3
18	MD034	Start ??	STOCK OK	HR00 F000	Service Oil Burners	Eqc001 FACTORY BOILER no 1
19	MD036	Start ??	STOCK OK	HR00 F000	50,000 Vehicle Rust Inspect,	veh1904 HANDA 1600, HGH444
20	MD037	Start ??	STOCK OK	HR00 F001	Renewal of Boiler Tubes	Eqc001 FACTORY BOILER no 1
21	MD038	Start ??	STOCK OK	HR00 F000	Welding Repairs	Eqc001 FACTORY BOILER no 1
22	MD039	Start ??	STOCK OK	HR00 F000	20,000 Service Kilux	VEH1363 KILUX 2000, DDD201

Slide 20

Slide notes: We observe that the indicator has changed to 'OK' now. Also, it is not mandatory to reserve Stock, so the indicator is just an indicator, not an inhibitor.

Maintenance Event Dashboard

Sort By: [Work Order](#) | [Start Date](#) | [Remove Start Dates](#) | [Remove HR](#)

Actions: [Select Start Dates](#) | [Remove Start Dates](#) | [Remove HR](#)

HR All Reports: [By Work Order](#) | [By Person](#)

Follow Up: [New Task](#) | [Diary](#)

Active Maintenance Events: -

Work Order	Status	Information	Maintenance Event	Job	
1	W0017	15/04/10	STOCK GK HP01 F000	50,000 Service Kilux	VEH1353 KILUX 2000, K0K309
2	W0022	15/04/10	STOCK GK HP00 F000	10,000 Vehicle Rust Inspect,	VEH1901 HANDA 1600, AAE387
3	W0025	15/04/10	STOCK GK HP00 F000	Inspect, Lubricate	Eqc002 Conveyor Chain
4	W0027	15/04/10	STOCK GK HP00 F000	Chain Adjust	Eqc002 Conveyor Chain
5	W0015	15/04/10	STOCK ?? HP02 F000	40,000 Service Kilux	VEH1351 KILUX 2000, K0K301
6	W0016	15/04/10	STOCK GK HP01 F000	180,000 Service Kilux	VEH1352 KILUX 2000, JRG152
7	W0030	15/04/10	STOCK GK HP00 F000	100,000 Service Kilux	veh1367 KILUX 2000, ASD588
8	W0031	15/04/10	STOCK GK HP00 F000	70,000 Vehicle Rust Inspect,	veh1368 KILUX 2000, ASD544
9	W0020	17/04/10	STOCK GK HP00 F000	20,000 Service, Cherry 1400	VEH1903 CHERRY 1400, DGD333
10	W0021	17/04/10	STOCK GK HP00 F000	20,000 Vehicle Rust Inspect,	VEH1903 CHERRY 1400, DGD333
11	W0018	Start ??	STOCK GK HP00 F000	120,000 Service Kilux	VEH1355 KILUX 2000, K0K663
12	W0023	Start ??	STOCK GK HP00 F000	10,000 km Service, Handa 160	VEH1901 HANDA 1600, AAE387
13	W0024	Start ??	STOCK GK HP00 F000	180,000 Vehicle Rust Inspect	veh1352 KILUX 2000, JRG152
14	W0026	Start ??	STOCK GK HP00 F000	Gearse	Eqc002 Conveyor Chain
15	W0028	Start ??	STOCK GK HP00 F000	10,000 Service Kilux	VEH1363 KILUX 2000, DDD201
16	W0032	Start ??	STOCK GK HP00 F000	Gearse	Eqc003 Transmission Chain # 3
17	W0033	Start ??	STOCK GK HP00 F000	Inspect, Lubricate	Eqc003 Transmission Chain # 3
18	W0034	Start ??	STOCK GK HP00 F000	Service Oil Burners	Eqc001 FACTORY BOILER no 1
19	W0036	Start ??	STOCK GK HP00 F000	50,000 Vehicle Rust Inspect,	veh1904 HANDA 1600, HGH444
20	W0037	Start ??	STOCK GK HP00 F001	Renewal of Boiler Tubes	Eqc001 FACTORY BOILER no 1
21	W0038	Start ??	STOCK GK HP00 F000	Welding Repairs	Eqc001 FACTORY BOILER no 1
22	W0039	Start ??	STOCK GK HP00 F000	20,000 Service Kilux	VEH1363 KILUX 2000, DDD201

Slide 21
Slide notes:

Maintenance Event Dashboard

Sort By: - [Work Order](#)
[Start Date](#)

Actions: - [Select Start Dates](#)
[Remove Start Dates](#)
[Remove HR](#)

HR Alle Reports: - [By Work Order](#)
[By Person](#)

Follow Up: - [New Task](#)
[Diary](#)

Active Maintenance Events: - [Quit](#)

>>> Work Order	Status	Information	Maintenance Event	Job
1	W0017	15/04/10 STOCK GK HP01 F000	50,000 Service Kilux	VEH1353 KILUX 2000, K0K309
2	W0022	15/04/10 STOCK GK HP00 F000	10,000 Vehicle Rust Inspect,	VEH1901 HANDA 1600, AAE387
3	W0025	15/04/10 STOCK GK HP00 F000	Inspect, Lubricate	Eqc002 Conveyor Chain
4	W0027	15/04/10 STOCK GK HP00 F000	Chain Adjust	Eqc002 Conveyor Chain
5	W0015	15/04/10 STOCK ?? HP02 F000	40,000 Service Kilux	VEH1351 KILUX 2000, K0K301
6	W0016	15/04/10 STOCK GK HP01 F000	180,000 Service Kilux	VEH1352 KILUX 2000, JRG152
7	W0030	15/04/10 STOCK GK HP00 F000	100,000 Service Kilux	veh1367 KILUX 2000, ASD588
8	W0031	15/04/10 STOCK GK HP00 F000	70,000 Vehicle Rust Inspect,	veh1368 KILUX 2000, ASD544
9	W0020	17/04/10 STOCK GK HP00 F000	20,000 Service, Cherry 1400	VEH1903 CHERRY 1400, DGD333
10	W0021	17/04/10 STOCK GK HP00 F000	20,000 Vehicle Rust Inspect,	VEH1903 CHERRY 1400, DGD333
11	W0018	Start ?? STOCK GK HP00 F000	120,000 Service Kilux	VEH1355 KILUX 2000, K0K663
12	W0023	Start ?? STOCK GK HP00 F000	10,000 km Service, Handa 160	VEH1901 HANDA 1600, AAE387
13	W0024	Start ?? STOCK GK HP00 F000	180,000 Vehicle Rust Inspect	veh1352 KILUX 2000, JRG152
14	W0026	Start ?? STOCK GK HP00 F000	Gearse	Eqc002 Conveyor Chain
15	W0028	Start ?? STOCK GK HP00 F000	10,000 Service Kilux	VEH1363 KILUX 2000, CDD201
16	W0032	Start ?? STOCK GK HP00 F000	Gearse	Eqc003 Transmission Chain # 3
17	W0033	Start ?? STOCK GK HP00 F000	Inspect, Lubricate	Eqc003 Transmission Chain # 3
18	W0034	Start ?? STOCK GK HP00 F000	Service Oil Burners	Eqc001 FACTORY BOILER no 1
19	W0036	Start ?? STOCK GK HP00 F000	50,000 Vehicle Rust Inspect,	veh1904 HANDA 1600, HGH444
20	W0037	Start ?? STOCK GK HP00 F001	Renewal of Boiler Tubes	Eqc001 FACTORY BOILER no 1
21	W0038	Start ?? STOCK GK HP00 F000	Welding Repairs	Eqc001 FACTORY BOILER no 1
22	W0039	Start ?? STOCK GK HP00 F000	20,000 Service Kilux	VEH1363 KILUX 2000, CDD201

Slide 22

Slide notes: Here we see an example where a Purchase Order is indicated for the Maintenance Event. The 'PO' indicator is always followed by zero or else the number of Purchase Orders present on the Event.

Maintenance Event Dashboard

Sort By: [Work Order](#) | [Start Date](#) | [Remove Start Dates](#) | [Remove HR](#)

Actions: [Select Start Dates](#) | [Remove Start Dates](#) | [Remove HR](#)

HR All Reports: [By Work Order](#) | [By Person](#)

Follow Up: [New Task](#) | [Diary](#)

Active Maintenance Events: -

Work Order	Status	Information	Maintenance Event	Job
1 W0017	15/04/10	STOCK GK HR01 F000	50,000 Service Kilux	VEH1353 KILUX 2000, K0K309
2 W0022	15/04/10	STOCK GK HR00 F000	10,000 Vehicle Rust Inspect,	VEH1901 HANDA 1600, AAE387
3 W0025	15/04/10	STOCK GK HR00 F000	Inspect, Lubricate	Eqc002 Conveyor Chain
4 W0027	15/04/10	STOCK GK HR00 F000	Chain Adjust	Eqc002 Conveyor Chain
5 W0015	15/04/10	STOCK ?? HR02 F000	40,000 Service Kilux	VEH1351 KILUX 2000, K0K301
6 W0016	15/04/10	STOCK GK HR01 F000	180,000 Service Kilux	VEH1352 KILUX 2000, JWG152
7 W0030	15/04/10	STOCK GK HR00 F000	100,000 Service Kilux	veh1367 KILUX 2000, ASD588
8 W0031	15/04/10	STOCK GK HR00 F000	70,000 Vehicle Rust Inspect,	veh1368 KILUX 2000, ASD544
9 W0020	17/04/10	STOCK GK HR00 F000	20,000 Service, Cherry 1400	VEH1903 CHERRY 1400, DGD333
10 W0021	17/04/10	STOCK GK HR00 F000	20,000 Vehicle Rust Inspect,	VEH1903 CHERRY 1400, DGD333
11 W0018	Start ??	STOCK GK HR00 F000	120,000 Service Kilux	VEH1358 KILUX 2000, K0K663
12 W0023	Start ??	STOCK GK HR00 F000	10,000 km Service, Handa 160	VEH1901 HANDA 1600, AAE387
13 W0024	Start ??	STOCK GK HR00 F000	180,000 Vehicle Rust Inspect	veh1352 KILUX 2000, JWG152
14 W0026	Start ??	STOCK GK HR00 F000	Gearase	Eqc002 Conveyor Chain
15 W0028	Start ??	STOCK GK HR00 F000	10,000 Service Kilux	VEH1363 KILUX 2000, DDD201
16 W0032	Start ??	STOCK GK HR00 F000	Gearase	Eqc003 Transmission Chain # 3
17 W0033	Start ??	STOCK GK HR00 F000	Inspect, Lubricate	Eqc003 Transmission Chain # 3
18 W0034	Start ??	STOCK GK HR00 F000	Service Oil Burners	Eqc001 FACTORY BOILER no 1
19 W0036	Start ??	STOCK GK HR00 F000	50,000 Vehicle Rust Inspect,	veh1904 HANDA 1600, H2H444
20 W0037	Start ??	STOCK GK HR00 F001	Renewal of Boiler Tubes	Eqc001 FACTORY BOILER no 1
21 W0038	Start ??	STOCK GK HR00 F000	Welding Repairs	Eqc001 FACTORY BOILER no 1
22 W0039	Start ??	STOCK GK HR00 F000	20,000 Service Kilux	VEH1363 KILUX 2000, DDD201


Slide 23

Slide notes: The 'HR' indicator will always signal how many people have been assigned to the Maintenance Task, if any.

IES Client[Q] v8.25 : My IES

Help Subnit Quit Functions Commands

Maintenance Event Dashboard

Sort By: - [Work Order](#) [Start Date](#) | Actions: - [Select Start Dates](#) [Remove Start Dates](#) [Remove HR](#) | HR All Reports: - [By Work Order](#) [By Person](#) | Follow Up: - [New Task](#) [Diary](#)  [Quit](#)

Active Maintenance Events: -

>>> Work Order	Status	Information	Maintenance Event	Job
1	W0017	13/04/10 STOICE GK HP01 F000	50,000 Service Kilux	VEH1353 KILUX 2000, K0K309
2	W0022	13/04/10 STOICE GK HP00 F000	10,000 Vehicle Rust Inspect,	VEH1901 HANDA 1600, AAE387
3	W0025	13/04/10 STOICE GK HP00 F000	Inspect, Lubricate	Eqc002 Conveyor Chain
4	W0027	13/04/10 STOICE GK HP00 F000	Chain Adjust	Eqc002 Conveyor Chain
5	W0015	15/04/10 STOICE ?? HP02 F000	40,000 Service Kilux	VEH1351 KILUX 2000, K0K301
6	W0016	15/04/10 STOICE GK HP01 F000	180,000 Service Kilux	VEH1352 KILUX 2000, JRG152
7	W0030	15/04/10 STOICE GK HP00 F000	100,000 Service Kilux	veh1367 KILUX 2000, AS2888
8	W0031	15/04/10 STOICE GK HP00 F000	70,000 Vehicle Rust Inspect,	veh1368 KILUX 2000, ASD544
9	W0020	17/04/10 STOICE GK HP00 F000	20,000 Service, Cherry 1400	VEH1903 CHERRY 1400, DGD333
10	W0021	17/04/10 STOICE GK HP00 F000	20,000 Vehicle Rust Inspect,	VEH1903 CHERRY 1400, DGD333
11	W0018	Start ?? STOICE GK HP00 F000	120,000 Service Kilux	VEH1358 KILUX 2000, K0K663
12	W0023	Start ?? STOICE GK HP00 F000	10,000 km Service, Handa 160	VEH1901 HANDA 1600, AAE387
13	W0024	Start ?? STOICE GK HP00 F000	180,000 Vehicle Rust Inspect	veh1352 KILUX 2000, JRG152
14	W0026	Start ?? STOICE GK HP00 F000	Gearse	Eqc002 Conveyor Chain
15	W0028	Start ?? STOICE GK HP00 F000	10,000 Service Kilux	VEH1363 KILUX 2000, CDD201
16	W0032	Start ?? STOICE GK HP00 F000	Gearse	Eqc003 Transmission Chain # 3
17	W0033	Start ?? STOICE GK HP00 F000	Inspect, Lubricate	Eqc003 Transmission Chain # 3
18	W0034	Start ?? STOICE GK HP00 F000	Service Oil Burners	Eqc001 FACTORY BOILER no 1
19	W0036	Start ?? STOICE GK HP00 F000	50,000 Vehicle Rust Inspect,	veh1904 HANDA 1600, H2H444
20	W0037	Start ?? STOICE GK HP00 F001	Renewal of Boiler Tubes	Eqc001 FACTORY BOILER no 1
21	W0038	Start ?? STOICE GK HP00 F000	Welding Repairs	Eqc001 FACTORY BOILER no 1
22	W0039	Start ?? STOICE GK HP00 F000	20,000 Service Kilux	VEH1363 KILUX 2000, CDD201

Slide 24
Slide notes:

Maintenance Event Dashboard

Sort By: [Work Order](#) | [Start Date](#) | [Remove Start Dates](#) | [Remove HR](#)

Actions: [Select Start Dates](#) | [Remove Start Dates](#) | [Remove HR](#)

HR All Reports: [By Work Order](#) | [By Person](#)

Follow Up: [New Task](#) | [Diary](#)

Active Maintenance Events: -

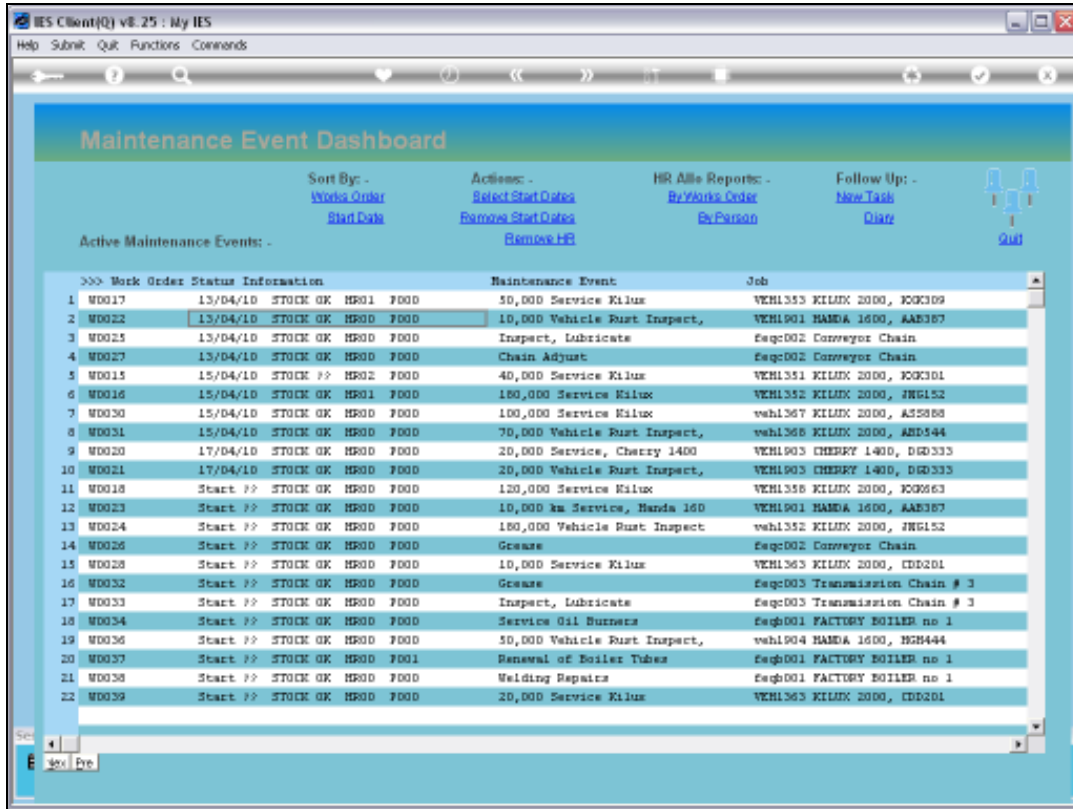
Work Order	Start Date	Status	Category	Priority	Maintenance Event	Job	
1 W0017	13/04/10	STOCK	GK	HR01	F000	50,000 Service Kilux	VEH1353 KILUX 2000, K0K309
2 W0022	13/04/10	STOCK	GK	HR00	F000	10,000 Vehicle Rust Inspect,	VEH1901 HANDA 1600, AAE387
3 W0025	13/04/10	STOCK	GK	HR00	F000	Inspect, Lubricate	Eqc002 Conveyor Chain
4 W0027	13/04/10	STOCK	GK	HR00	F000	Chain Adjust	Eqc002 Conveyor Chain
5 W0015	15/04/10	STOCK	??	HR02	F000	40,000 Service Kilux	VEH1351 KILUX 2000, K0K301
6 W0016	15/04/10	STOCK	GK	HR01	F000	180,000 Service Kilux	VEH1352 KILUX 2000, JRG152
7 W0030	15/04/10	STOCK	GK	HR00	F000	100,000 Service Kilux	veh1367 KILUX 2000, A25888
8 W0031	15/04/10	STOCK	GK	HR00	F000	70,000 Vehicle Rust Inspect,	veh1368 KILUX 2000, A8D544
9 W0020	17/04/10	STOCK	GK	HR00	F000	20,000 Service, Cherry 1400	VEH1903 CHERRY 1400, DGD333
10 W0021	17/04/10	STOCK	GK	HR00	F000	20,000 Vehicle Rust Inspect,	VEH1903 CHERRY 1400, DGD333
11 W0018	Start ??	STOCK	GK	HR00	F000	120,000 Service Kilux	VEH1358 KILUX 2000, K0K663
12 W0023	Start ??	STOCK	GK	HR00	F000	10,000 km Service, Handa 160	VEH1901 HANDA 1600, AAE387
13 W0024	Start ??	STOCK	GK	HR00	F000	180,000 Vehicle Rust Inspect	veh1352 KILUX 2000, JRG152
14 W0026	Start ??	STOCK	GK	HR00	F000	Gearse	Eqc002 Conveyor Chain
15 W0028	Start ??	STOCK	GK	HR00	F000	10,000 Service Kilux	VEH1363 KILUX 2000, CDD201
16 W0032	Start ??	STOCK	GK	HR00	F000	Gearse	Eqc003 Transmission Chain # 3
17 W0033	Start ??	STOCK	GK	HR00	F000	Inspect, Lubricate	Eqc003 Transmission Chain # 3
18 W0034	Start ??	STOCK	GK	HR00	F000	Service Oil Burners	Eqc001 FACTORY BOILER no 1
19 W0036	Start ??	STOCK	GK	HR00	F000	50,000 Vehicle Rust Inspect,	veh1904 HANDA 1600, H2H444
20 W0037	Start ??	STOCK	GK	HR00	F001	Renewal of Boiler Tubes	Eqc001 FACTORY BOILER no 1
21 W0038	Start ??	STOCK	GK	HR00	F000	Welding Repairs	Eqc001 FACTORY BOILER no 1
22 W0039	Start ??	STOCK	GK	HR00	F000	20,000 Service Kilux	VEH1363 KILUX 2000, CDD201

Slide 25
Slide notes:

The screenshot shows the 'Maintenance Event Dashboard' in the IES Client v8.25 application. The dashboard includes navigation options like 'Sort By: Work Order', 'Actions: Select Start Dates', 'HR All Reports: By Work Order', and 'Follow Up: New Task'. Below these are links for 'Start Date', 'Remove Start Dates', 'By Person', 'New Task', and 'Diary'. A 'Quit' button is also visible. The main section is titled 'Active Maintenance Events: -' and contains a table with columns for 'Work Order', 'Status', 'Information', 'Maintenance Event', and 'Job'. The table lists 22 work orders with their respective dates, statuses, and descriptions of maintenance tasks such as 'Service Kilux', 'Vehicle Rust Inspect', and 'Chain Adjust'.

Work Order	Status	Information	Maintenance Event	Job
1 W0017	15/04/10	STOCK GK HP01 F000	50,000 Service Kilux	VEH1353 KILUX 2000, K0K309
2 W0022	15/04/10	STOCK GK HP00 F000	10,000 Vehicle Rust Inspect,	VEH1901 HANDA 1600, AAE387
3 W0025	15/04/10	STOCK GK HP00 F000	Inspect, Lubricate	Eqc002 Conveyor Chain
4 W0027	15/04/10	STOCK GK HP00 F000	Chain Adjust	Eqc002 Conveyor Chain
5 W0015	15/04/10	STOCK ?? HP02 F000	40,000 Service Kilux	VEH1351 KILUX 2000, K0K301
6 W0016	15/04/10	STOCK GK HP01 F000	180,000 Service Kilux	VEH1352 KILUX 2000, JRG152
7 W0030	15/04/10	STOCK GK HP00 F000	100,000 Service Kilux	veh1367 KILUX 2000, ASD588
8 W0031	15/04/10	STOCK GK HP00 F000	70,000 Vehicle Rust Inspect,	veh1368 KILUX 2000, ASD544
9 W0020	17/04/10	STOCK GK HP00 F000	20,000 Service, Cherry 1400	VEH1903 CHERRY 1400, DGD333
10 W0021	17/04/10	STOCK GK HP00 F000	20,000 Vehicle Rust Inspect,	VEH1903 CHERRY 1400, DGD333
11 W0018	Start ??	STOCK GK HP00 F000	120,000 Service Kilux	VEH1355 KILUX 2000, K0K663
12 W0023	Start ??	STOCK GK HP00 F000	10,000 km Service, Handa 160	VEH1901 HANDA 1600, AAE387
13 W0024	Start ??	STOCK GK HP00 F000	180,000 Vehicle Rust Inspect	veh1352 KILUX 2000, JRG152
14 W0026	Start ??	STOCK GK HP00 F000	Gearase	Eqc002 Conveyor Chain
15 W0028	Start ??	STOCK GK HP00 F000	10,000 Service Kilux	VEH1363 KILUX 2000, CDD201
16 W0032	Start ??	STOCK GK HP00 F000	Gearase	Eqc003 Transmission Chain # 3
17 W0033	Start ??	STOCK GK HP00 F000	Inspect, Lubricate	Eqc003 Transmission Chain # 3
18 W0034	Start ??	STOCK GK HP00 F000	Service Oil Burners	Eqc001 FACTORY BOILER no 1
19 W0036	Start ??	STOCK GK HP00 F000	50,000 Vehicle Rust Inspect,	veh1904 HANDA 1600, H2H444
20 W0037	Start ??	STOCK GK HP00 F001	Renewal of Boiler Tubes	Eqc001 FACTORY BOILER no 1
21 W0038	Start ??	STOCK GK HP00 F000	Welding Repairs	Eqc001 FACTORY BOILER no 1
22 W0039	Start ??	STOCK GK HP00 F000	20,000 Service Kilux	VEH1363 KILUX 2000, CDD201

Slide 26
Slide notes:



Slide 27

Slide notes: So those are the critical display options and indicators on the Active Dashboard.